

尺寸：42.5X42CM  
正面

v.06

14+

## VIDEO STREAMING DRONE

SHARPER IMAGE™

## VIDEO STREAMING DRONE

SHARPER IMAGE™

## VIDEO STREAMING DRONE

SHARPER IMAGE™

### GETTING TO KNOW YOUR DRONE

PLEASE READ ALL WARNINGS AND INSTRUCTIONS PRIOR TO USE. KEEP THIS DOCUMENT AS IT CONTAINS IMPORTANT INFORMATION ABOUT YOUR DRONE.



#### INTRODUCTION

Congratulations on your purchase of the Streaming 2.4 GHz Video Drone. Get ready to soar to new heights. Master the art of drone flying with remote control maneuverability. This lightweight drone will provide hours of fun.

#### SPECIFICATIONS

Drone Battery: 3.7V 650 mAh Li-po  
Remote Controller Battery: 6 x 1.5V AAA  
Charging Time: Approximately 100 minutes  
Maximum Recommended Altitude 120 ft.

#### TABLE OF CONTENTS

#### General Warnings

#### Contents and Remote Battery Installation

#### Charging Battery and Replacing Propellers

#### Remote Overview

#### Operating Drone

#### Modes

#### Tips and FCC Warning

Page 1

Page 2

Page 3

Page 4

Page 5

Page 6

Page 7

#### QUESTIONS OR CONCERNS?

PLEASE GIVE US A CALL...WE'RE HERE TO HELP

### CUSTOMER SUPPORT

(800) 374-2744

Before calling please locate the 10-digit code printed on the back of your remote



## VIDEO STREAMING DRONE

SHARPER IMAGE™

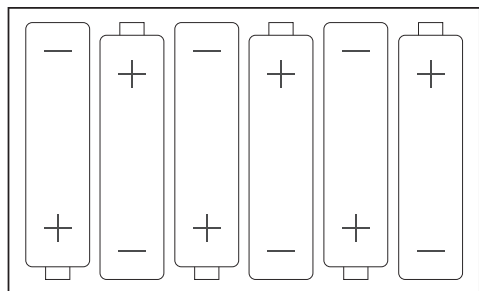
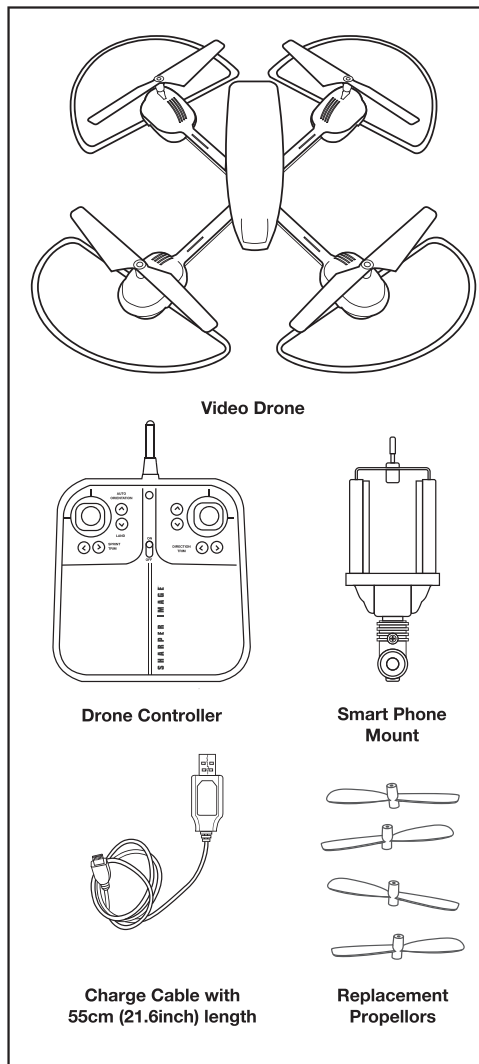
## VIDEO STREAMING DRONE

SHARPER IMAGE™

## VIDEO STREAMING DRONE

SHARPER IMAGE™

#### CONTENTS



#### REMOTE BATTERY INFORMATION

- Using a Phillips-head screwdriver, remove the screw by turning it counterclockwise and remove the battery cover.
- Install 6 "AA" batteries as shown in diagram shown above.
- Replace the battery cover and screw by turning it clockwise.

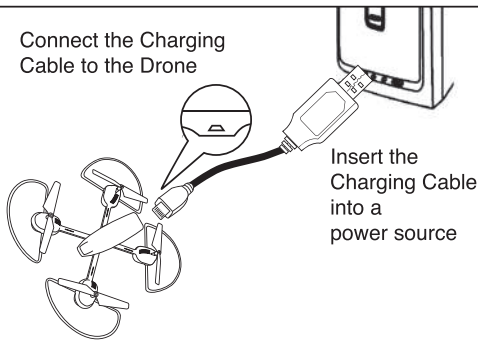
#### CHARGING BATTERY

Note: The Battery Charge Cable will light up when it is charging the battery and turn off when the battery is fully charged. Charge time is approximately 100 minutes.

Turn off the drone before charging.

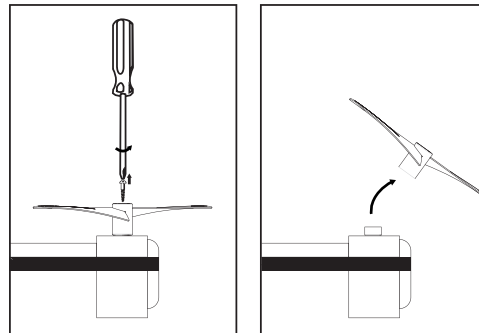
Connect the Battery Charge Cable to the charging port on the Drone.

Connect connector to power source.



#### Replacing Propellers

- Follow diagram.
- Remove screw from top of Propeller.
- Remove broken Propeller and replace with new Propeller.
- Make sure you installed the correct blade. Each blade has a number written on it. Match the blades with the corresponding number on the drone.
- Insert screw into top of Propeller.



#### DRONE APP

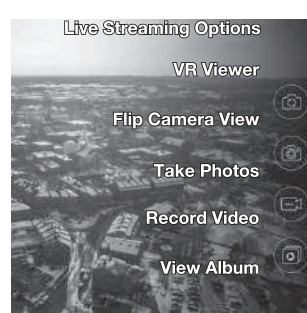
Go to your app store on your smart phone and download the "360 MachFlight" application.



**Pairing Drone - First Time**  
1. Press the connect to Wi-Fi button.  
2. Follow the on screen instructions.



**After Connecting Drone**  
1. Press the Stream Button to begin streaming.  
2. Press the Album Button to review pictures and videos.



Page 3

尺寸：42.5X42CM  
背面

## VIDEO STREAMING DRONE

SHARPER IMAGE™

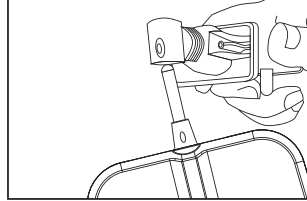
## VIDEO STREAMING DRONE

SHARPER IMAGE™

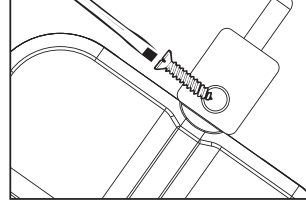
## VIDEO STREAMING DRONE

SHARPER IMAGE™

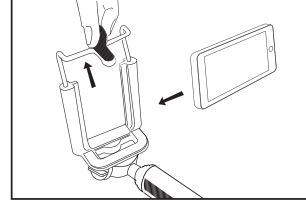
#### INSTALLING PHONE HOLDER



Insert enters through hole at the base of the Smart Phone Mount.



Align hole on Mount with hole in antenna. Insert screw to secure Mount to remote.



Carefully slide phone into Mount by pulling up on top of Mount. Adjust angle accordingly.

#### OPERATING DRONE

##### Step 1 - Pre Flight Checklist

- Read all warnings and instructions.
- Install remote batteries, page 2.
- Make sure that drone and remote are powered off.
- Install drone holder.
- Charge batteries, page 3.

##### Step 2 - Choosing a location

- Drone is designed to be flown indoors and outdoors.
- Always make sure you have enough space to fly drone.
- Always follow warnings, page 1.

##### Step 3 - Starting Drone

- Making sure your remote is off, slide drone switch to ON. Drone lights will begin to flicker.
- Place drone on a flat even surface with clearance according to diagram (Fig 1).
- Turn remote on. Make sure the left stick (throttle) is in a neutral position (stick is centered).
- Push the stick up and then down.
- A single tone indicates that the drone is paired. Drone lights will flicker rapidly then turn on permanently once paired.
- If pairing is unsuccessful, repeat steps 3-4.

##### Step 4 - Lift Off

Press the TAKE OFF/LAND button on the front of the drone to lift off. Drone will elevate off the ground and level off into a hover. You can compensate for some of the drones drifting by using the Multi Directional Button or by following Step 5.

##### Step 5 - Drone Begins to Drift

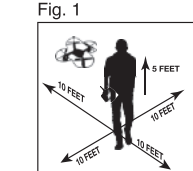
- Follow this step if your drone begins to drift while take off or during flight.
- Drone drifts backwards: Press the forward Direction Trim Button.
  - Drone drifts forwards: Press the Backwards Direction Trim Button.
  - Drone drifts left: Press the Right Direction Trim Button.
  - Drone drifts right: Press the Left Direction Trim Button.
  - Drone spins clockwise (viewing drone from top): Press the Right Spin Trim Button.
  - Drone spins counter-clockwise (viewing drone from top): Press the Left Spin Trim Button.

##### Step 6 - Operating Drone in Flight

- The drones range is approximately 250 feet or 120 feet of altitude:
- Read and be aware of all warnings found on Page 1.
  - Maintain your desired elevation by using the Throttle.
  - Push the Throttle joystick to right or left to spin the drone.
  - Use the right joystick to move forward backwards, and side to side.
  - Review step 5 if your drone begins to drift.
  - Drone will begin to blink when drone is paired to remote and battery is low.

##### Step 7 - Landing Drone

- There are two ways to land the drone:
- Slowly and carefully press the left stick (FLIGHT AND ROTATE) down until drone lands.
  - Or press TAKE OFF/LAND button to trigger auto landing. If the drone begins to drift, you can still control the drone's direction using the Navigation stick (right stick).



Page 5

#### MODES

##### Auto Orientation Button

- Auto Orientation default setting is off. To enter this mode press Auto Orientation button. Remote will beep twice.
- After drone is successfully paired, the 2 white LED lights toward orientation will be the original forward orientation, when drone is in auto orientation mode, the drone will orient to the user (remote), no matter what direction the drone is facing. Pushing the right stick up will send the drone away from the user, pushing it to the right will move the drone right, etc.
- Remote will beep every 6 seconds to indicate the drone is in Auto Orientation mode.
- To exit mode, press the Auto Orientation button. Remote will sound 1 long beep indicating that it has exited Auto Orientation mode.

Note: Auto Orientation mode is oriented to the user when pairing. If the remote is moved after pairing Auto Orientation, please follow directions above to reset Auto Orientation.

##### Camera - taking pictures and creating videos

- Taking a picture- press camera icon on app once to take a picture.
- Creating video- press video icon on app once to take a video. Press the video icon on app again to stop recording.

### CUSTOMER SUPPORT

(800) 374-2744

#### TIPS

- Do not crash drone into sand or dirt. Drone gears may become clogged.
- When first learning to fly, practice lifting off and hovering.
- Stay several feet from walls and buildings.
- Always press throttle all the way down after crashing or when something gets stuck in propellers.
- Never fly drones above or near people, sudden changes in wind or other conditions could lead to unexpected crashes.
- Always use caution when flying drone vehicles, obey relevant laws, respect the privacy and property rights of others.
- The drone shall never be modified or used for anything except its intended purpose.

**WARNING:** Changes or modifications to this unit not expressly approved by the party responsible for compliance could void the user's authority to operate the equipment.

#### TROUBLESHOOTING:

- When remote switch is turned on, the remote light does not illuminate:
- Check that batteries in the remote are installed correctly OR
  - Replace with new batteries.

During drone flight, the remote LED is flashing:

- Remote batteries are low, replace them with new batteries.

Drone and remote properly pair, but the drone will not lift off:

- Drone battery needs charging. Use the USB Charge Cable to connect the drone to power source.

After trimming the drone, the drone flight is very unstable and cannot fly properly:

- One or more blades are most likely damaged.
- Turn off the drone and remote.
- Replace with the proper number replacement blade and try flying again.

After impact, the drone is unstable:

- Put the left remote control lever to the left bottom and put the right remote control lever to the right bottom at the same time. This will reset the gyroscope (Fig. 1).
- If the above does not resolve the issue, reboot the drone and controller and pair again.

Remote Controller and Drone can not be paired:

- Check Point: Remote Controller must be closed to Drone, not exceed 12 feet.

Note: If there are 2 sets of Drones within 12 feet for Pairing, you must pair one successfully before pairing the second set.

This device complies with Part 15 of the FCC Rules. Operation is subject to the following two conditions: (1) this device may not cause harmful interference, and (2) this device must accept any interference received, including interference that may cause undesired operation.

NOTE: This equipment has been tested and found to comply with the limits for a Class B digital device, pursuant to Part 15 of the FCC Rules. These limits are designed to provide reasonable protection against harmful interference in a residential installation. This equipment generates, uses and can radiate radio frequency energy and, if not installed and used in accordance with the instructions, may cause harmful interference to radio communications. However there is no guarantee that interference will not occur in a particular installation.

If the equipment does cause harmful interference to radio or television reception, which can be determined by turning the equipment off and on the user is encouraged to try to correct the interference by one or more of the following measures:

- Reorient or relocate the receiving antenna.
- Increase the separation between the equipment and receiver.
- Connect the equipment into an outlet on a circuit different from that to which the receiver is connected.
- Consult the dealer or an experienced radio/TV technician for help.

Warning: Changes or modifications to this unit not expressly approved by the party responsible for compliance could void the user's authority to operate the equipment.

FCC RF Radiation Exposure Statement Caution: To maintain compliance with the FCC's RF exposure guidelines, place the drone at least 20cm from nearby persons.

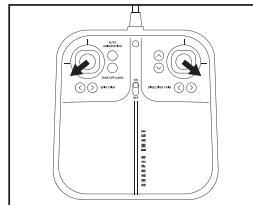
Sharper Image® name and logos are registered trademarks. Distributed by and © 2017 MerchSource, LLC, Irvine, CA 92618. All rights reserved.

The artwork and design of this package are protected by US copyright law and may not be reproduced, distributed, displayed, published or used for any purpose without prior written permission. Altering, removing or producing any of the trademark or copyright notices on this package is not permitted.

China Patent No. ZL20173007296.4  
US Patent No. D945,445  
Printed in China

Page 6

(Fig. 1)



Page 7