

INSTRUCTION MANUAL



READ THIS MANUAL BEFORE PLAYING WITH YOUR REMOTE-CONTROL.

TRANSMITTER



CONTROLLER INSTRUCTION:

- A. DIRECTION CONTROL
- B. WALKIE TALKIE
- C. SOUND EFFECTS
- D. TONE EFFECTS
- E. DEMO
- F. SOUND EFFECTS PLAY
- G. PROGRAMMING MODE
- H. SPY MODE
- I. ON/OFF SWITCH

FUNCTION DESCRIPTION

- A. DIRECTION CONTROL**
Move forward / backward / left / right
- B. WALKIE TALKIE**
Speaking to the microphone after pressing, it can transmit sound to the robot in real time.
- C. SOUND EFFECTS**
Toggle switch of three sounds effects (Cheer /Ghost/Fart),press button F to play the sound.
- D. TONE EFFECTS**
Toggle switch of high-middle-low tone,press button B to speak in different tone.
- E. DEMO**
When pressed, the robot automatically demonstrates

F. SOUND EFFECTS PLAY

When pressed, the robot will play the sound selected by toggle switch C.

G. PROGRAMMING MODE

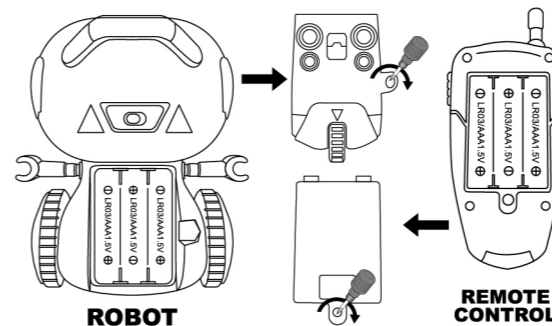
1. Press button G to enter programming mode (robot eyes flashing, and making "beep-beep" sounds).
2. Press the direction buttons in programming mode to arrange actions.
3. After pressing button G again, the robot will automatically demonstrate according to the programmed actions.

H. SPY MODE

Hold button H to hear the sounds from the robot's location.

I. ON/OFF SWITCH

INSTALLATION METHOD OF BATTERY



Open the battery cover and load three batteries of 3 AAA into the remote control and the robot

MAINTENANCE

- 1.The quadcopter shall be cleaned regularly with clean soft cloth.
- 2.Avoid strong sunshine and heat.
- 3.Keep away from water.
- 4.Regular check is suggested and damaged parts shall be replaced in time.

APPEND MANUAL

Produce name: ROBOTIC TOYS
Model: 1903
Manufacturer: GUANGDONG HENGDI TECHNOLOGY CORP., LTD.
Address: THE WEST OF NINGCHUAN ROAD AND THE SOUTH OF HUANCUI ROAD, CHENGHAI ZONE, SHANTOU CITY, GUANGDONG, CHINA

NOTE: This equipment has been tested and found to comply with the limits for a Class B digital device, pursuant to part 15 of the FCC Rules. These limits are designed to provide reasonable protection against harmful interference in a residential installation. This equipment generates, uses and can radiate radio frequency energy and, if not installed and used in accordance with the instructions, may cause harmful interference to radio communications. However, there is no guarantee that interference will not occur in a particular installation. If this equipment does cause harmful interference to radio or television reception, which can be determined by turning the equipment off and on, the user is encouraged to try to correct the interference by one or more of the following measures: —Reorient or relocate the receiving antenna. —Increase the separation between the equipment and receiver. —Connect the equipment into an outlet on a circuit different from that to which the receiver is connected. —Consult the dealer or an experienced radio/TV technician for help.

This device complies with part 15 of the FCC Rules. Operation is subject to the following two conditions: (1) This device may not cause harmful interference, and (2) this device must accept any interference received, including interference that may cause undesired operation. Any changes or modifications not expressly approved by the party responsible for compliance could void the user's authority to operate the equipment.