

True Wireless Bluetooth Earphones  
with Power Bank



**SKY PLUS**  
www.skyplus.com

**Dear Customer:**

Thank you for purchasing our Bluetooth earphone SKY PLUS. Before using this device, please read the user manual carefully in order to operate it normally.

**• Safety instructions**

The use at high volume for an extended period of time may damage your hearing. Don't let children play with the device. (Small parts may cause choking hazard). Do not introduce or immerse them in water or expose them to direct sources of water or any other liquid. The Power Bank must not be used in humidity environments or introduced into water under any circumstances.

Don't clean the earphones with strong chemicals, cleaner, detergent etc. Please don't use the earphones in dusty and dirty place; it may damage the removable parts and electronic components. Don't place the earphones in high temp places, high temperature will shorten the device usage life, damage battery and the plastic case. Don't store the earphone in low temp place, when earphone temp arise to normal temp, humidity will be present into the inner parts of the earphone and it will damage the internal components. Disassemble and modify the earphone is not allowed and will void the warranty.

If it's not used for a long time, before using it, please charge

the earphone.

**• Bluetooth wireless technology**

With the Bluetooth wireless technology you can create connections between compatible devices. The distance between them should not be more than 10 meters (about 33 feet). The connection may be interfered with walls, electronic device or other.

**• General Instructions**

You have in your hands a bluetooth true wireless earphones set. Thanks to its technology, one of the earphones will connect with your smartphone and will be also connected wirelessly with the second earphone.

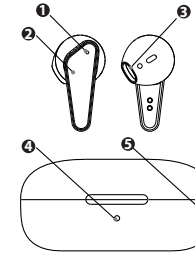
**• Bluetooth Pairing in True Wireless mode**

The first time you use the device, you need to pair it with your smartphone and also pair each earphone to the other one.

This procedure should be repeated any time you want to connect the earphones to a new device.

To turn on the earphones, simply remove them from the Power Bank. They will automatically turn on, pair with each other, and be ready to be found from your smartphone with the bluetooth connection.

The earphones will blink blue, and then connect to each



**Product Overview**

1. LED indicators
2. Multifunction buttons
3. Speaker
4. LED indicators
5. Type-C port

other. There is a earpiece will flash blue and red and you will hear the word Pairing mode.

From your smartphone, look in the list of Bluetooth devices for "SKY PLUS" and connect. When the earphones are paired with your mobile, they will flash red.

**• Power ON/OFF the Bluetooth earphones**

(when your smartphone has already been synchronized)

Power On: remove the earphones from the Power Bank, and they will automatically connect to each other, and connect to your smartphone. You will hear the word TWS Connected.

Power Off: to turn off the earphones insert them into the

Power Bank. They will automatically turn off and start charging your battery. The red light will turn on in both.

**• Accept or reject incoming calls with Bluetooth earphones**

We can receive calls while using the earphones. If we are listening to music and someone calls us, the music will stop, and we will hear the ring tone.

To accept the call, press the MF button once on any of the earphones. You can talk regularly, using the built-in microphone in the earphones. To end the call press the button 1 of any of the earphones.

When there is an incoming call, the earphone will issue a sound, keep pressing the MF button for 2 times to reject the call, or use the mobile phone to reject the call.

**• Playing Music**

To start playback, press the button once. If you press again, you will leave the music in Pause.

You can move to the next song by pressing the right ear button 2 times. We can go back to the beginning of the current song or move to the previous song, making 2 clicks on the left earphones.

**• Voice assistant**

The earphones have the Voice Assistant function. You

can activate it by pressing the multifunction button for 3 times. You will hear a short sound, and then you will hear Voice Dial, after which you can give the order you want to the microphone of your earphones. By activating the Voice Assistant, you can give orders to your smartphone, manage music, request information, etc ... Check the websites of Google and Apple for more information.

This function is only available on compatible Android smartphones, and on Apple devices with the Siri service available. Sonun is not responsible for possible problems with the use of this third-party service.

**• Turning the earphones on and off manually**

You can turn the earphones on and off manually, without inserting or removing them from the Power Bank.

To turn them on, press both buttons for 3 seconds. You will hear Power On. The LED light will flash in blue. You must remove the fingers from the buttons now. The earphones will pair with each other automatically, and synchronize with your smartphone, if you already connected them at any moment.

To turn them off, press the button for 5 seconds on one of the earphones and both earphones will turn off. You will hear Power Off.

**• IMPORTANT NOTICE: Keep the Power Bank with Energy**

It is important that the Power Bank maintain battery charge in order to properly dispose the Auto Power and Auto Power off functions when removing or inserting the earphones in the Power Bank. These functions require the Power Bank to have a battery available to keep them in Stand By mode. In case the Power Bank does not have a battery, when you insert the earphones in the Power Bank they will not turn off automatically and we will have to turn them off and turn them on manually.

**• Recharge the earphones battery**

Your earphones each have a rechargeable battery.

When the earphones battery runs out, or when you stop using them, you can place them in the included Power Bank, to recharge the batteries again.

When you place the earphones in the Power Bank, they will start charging automatically. The LED light on each earphones will turn on red when charging

When fully charged, the LED light on the earphones will turn blue, and then turn off. When the earphones are charging, the blue LED of the Power Bank will remain fixed in blue. When the light goes out the earphones will be charged

**• Recharge the Power Bank battery**

The Power Bank has a built-in battery, which will allow you to charge your earphones in addition to saving them. However, you must also recharge the Power Bank. We recommend keeping it charged whenever possible, in order to use the Auto Power and Auto Power off functions of the earphones.

To do this, use the supplied USB cable, connecting it to the micro USB port, and the other end to your car's cigarette lighter.

The LED light on charging station will be red.

**FCC WARNING**

This device complies with part 15 of the FCC Rules. Operation is subject to the following two conditions: (1) this device may not cause harmful interference, and (2) this device must accept any interference received, including interference that may cause undesired operation.

Any changes or modifications not expressly approved by the party responsible for compliance could void the user's authority to operate the equipment. NOTE: This equipment has been tested and found to comply with the limits for a Class B digital device, pursuant to Part 15 of the FCC Rules. These limits are designed to provide reasonable protection against harmful interference in a residential installation. This equipment generates, uses and can radiate radio frequency energy and, if not installed and used in accordance with the instructions, may cause harmful interference to radio communications. However, there is no guarantee that interference will not occur in a particular installation. If this equipment does cause harmful interference to radio or television reception, which can be determined by turning the equipment off and on, the user is encouraged to try to correct the interference by one or more of the following measures:

- Reorient or relocate the receiving antenna.
- Increase the separation between the equipment and receiver.
- Connect the equipment into an outlet on a circuit different from that to which the receiver is connected.
- Consult the dealer or an experienced radio/TV technician for help. The device has been evaluated to meet general RF exposure statement.

The device can be used in portable exposure condition without restriction