

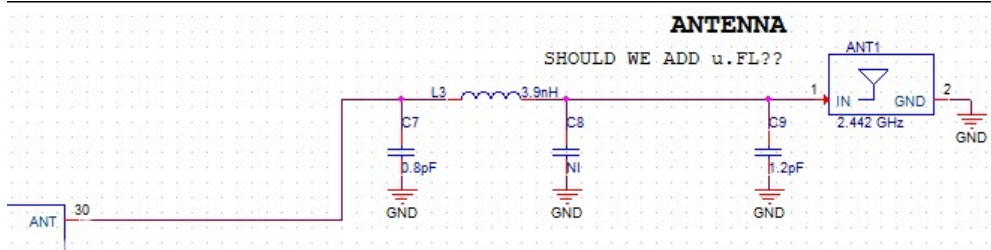
February 5, 2021

RE: Class 2 Permissive Change
FCC ID: 2AWYY-BETA

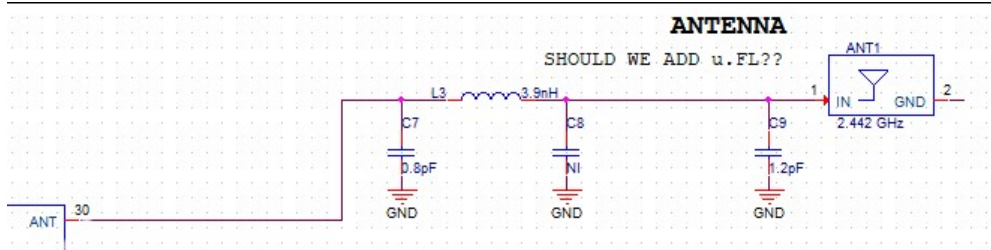
To Whom It May Concern,

Sana Health, Inc. would like to request a Class 2 permissive change for our Beta product. Due to an error, the non-feed end of the chip antenna was grounded, contrary to the specifications of the chip antenna vendor. The new revision of the board corrects that error. No other changes were made to the device design or software.

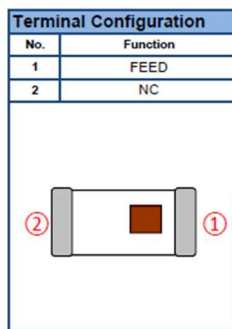
In the current version, the schematic for the antenna signal path is:



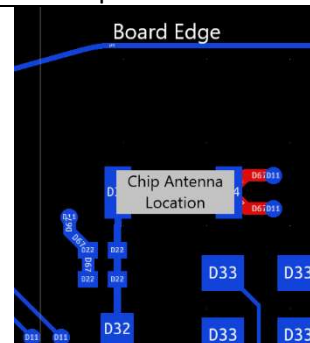
In the new revision, the GND connection to ANT1 was removed per the vendor's specification.



Vendor's specification for the 2450AT18B100 chip antenna.



The layout change involved deleting the two traces in red on the bottom side of the board. The round pads to the right of the chip antenna are tied to ground.



Sincerely,
Sam Pai
Dir of Electrical Engineering