

Skyworth

Antenna specification

HK100

**WIFI: 2400MHZ-2500MHZ**

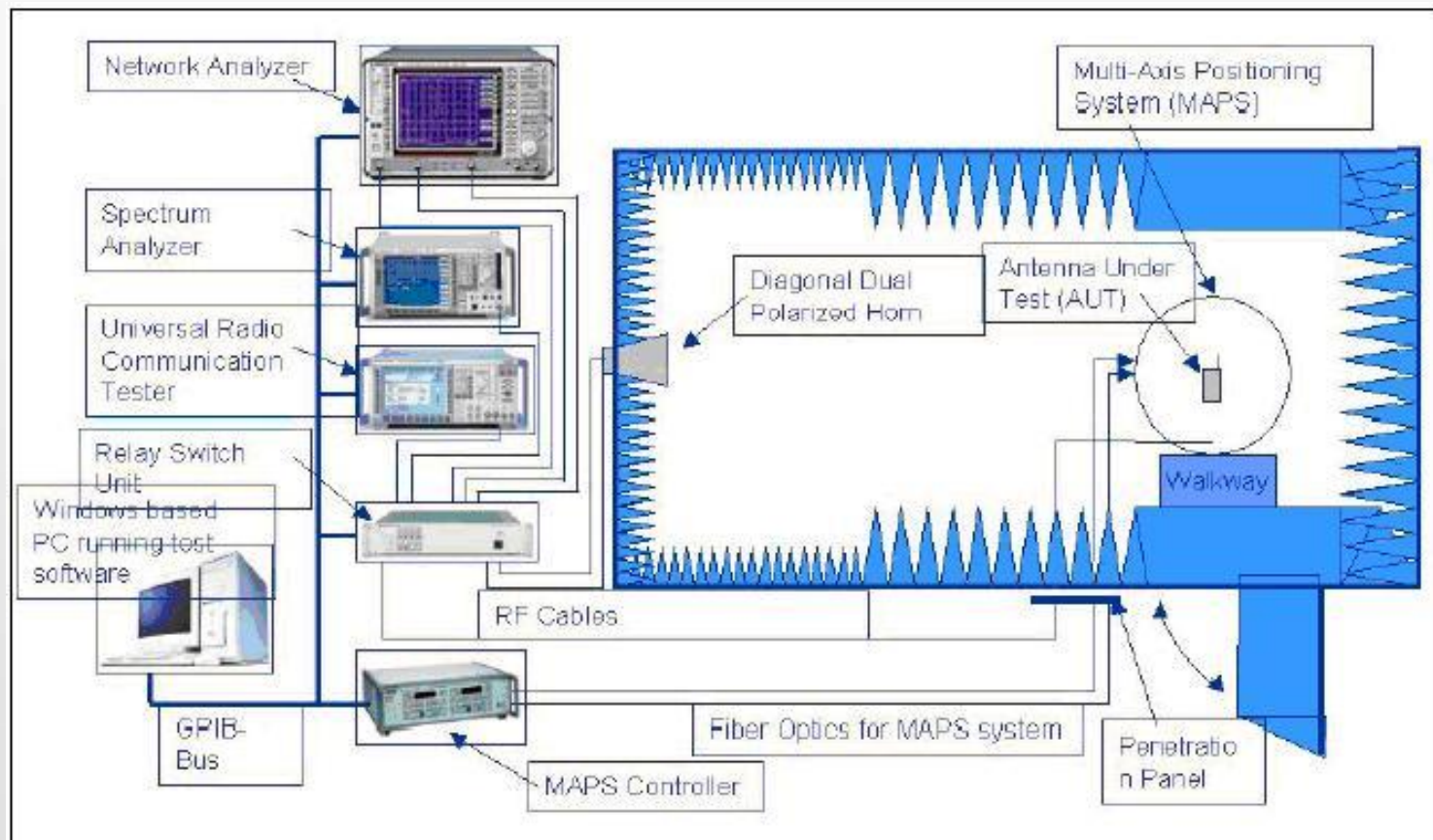
**5180MHZ-5825MHZ**

Topocom —The test report

[www.topolink.com.cn](http://www.topolink.com.cn)

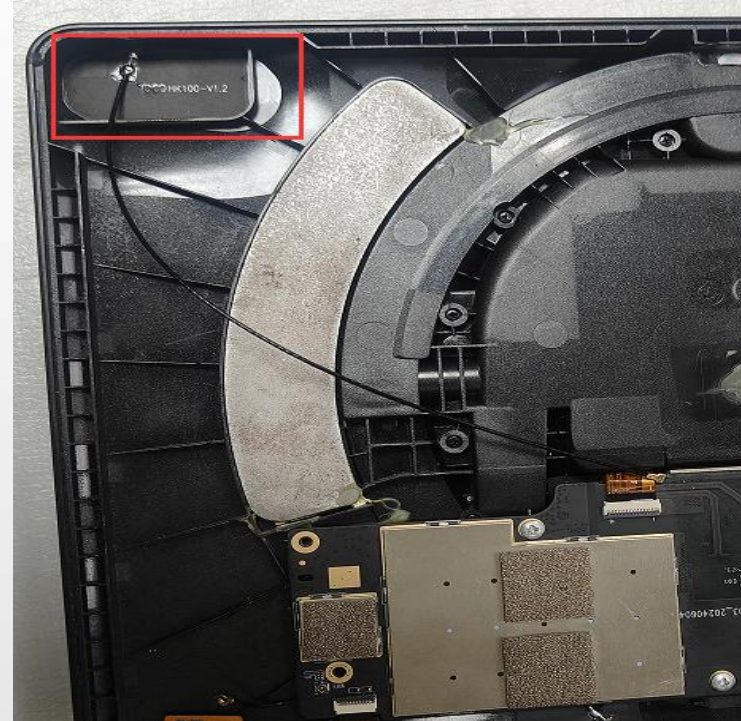
**2024-08-15**

- 一、 Test environment: CTIA 743 anechoic room, 8960/5515C, the EUT is placed away from the standard Horn antenna at 4 meters turntable



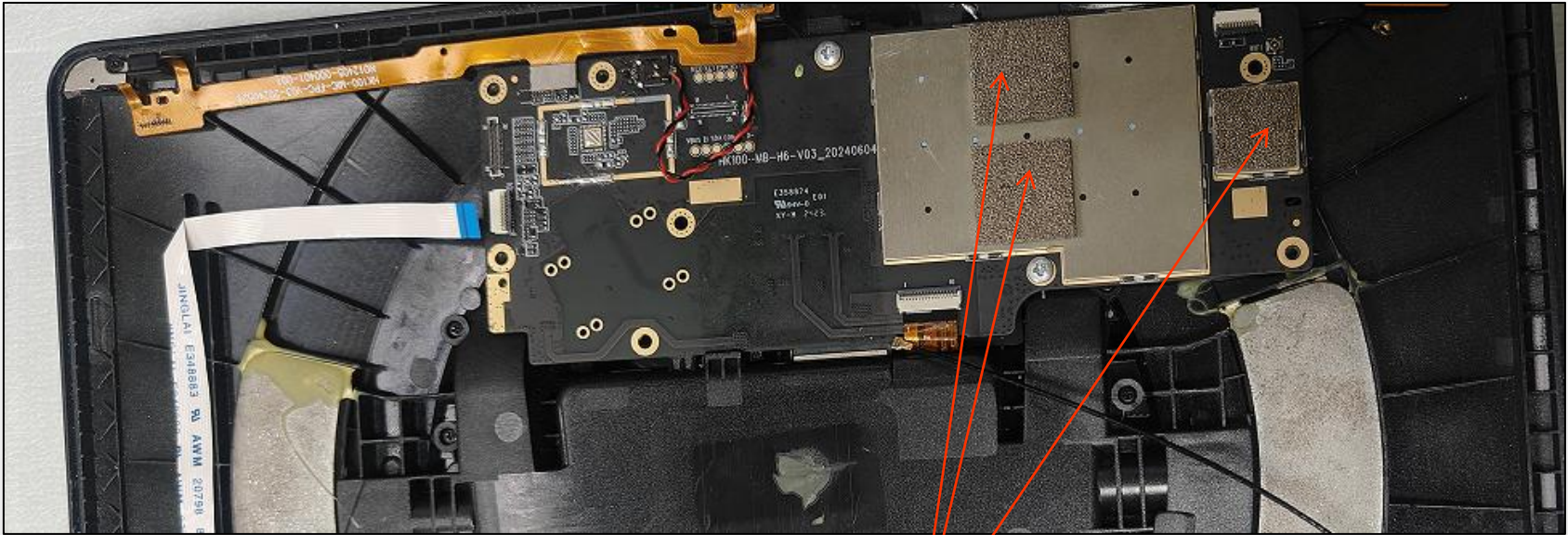
# topolink

## 二、 Antenna position:



# topolink

## 三、Environmental treatment :

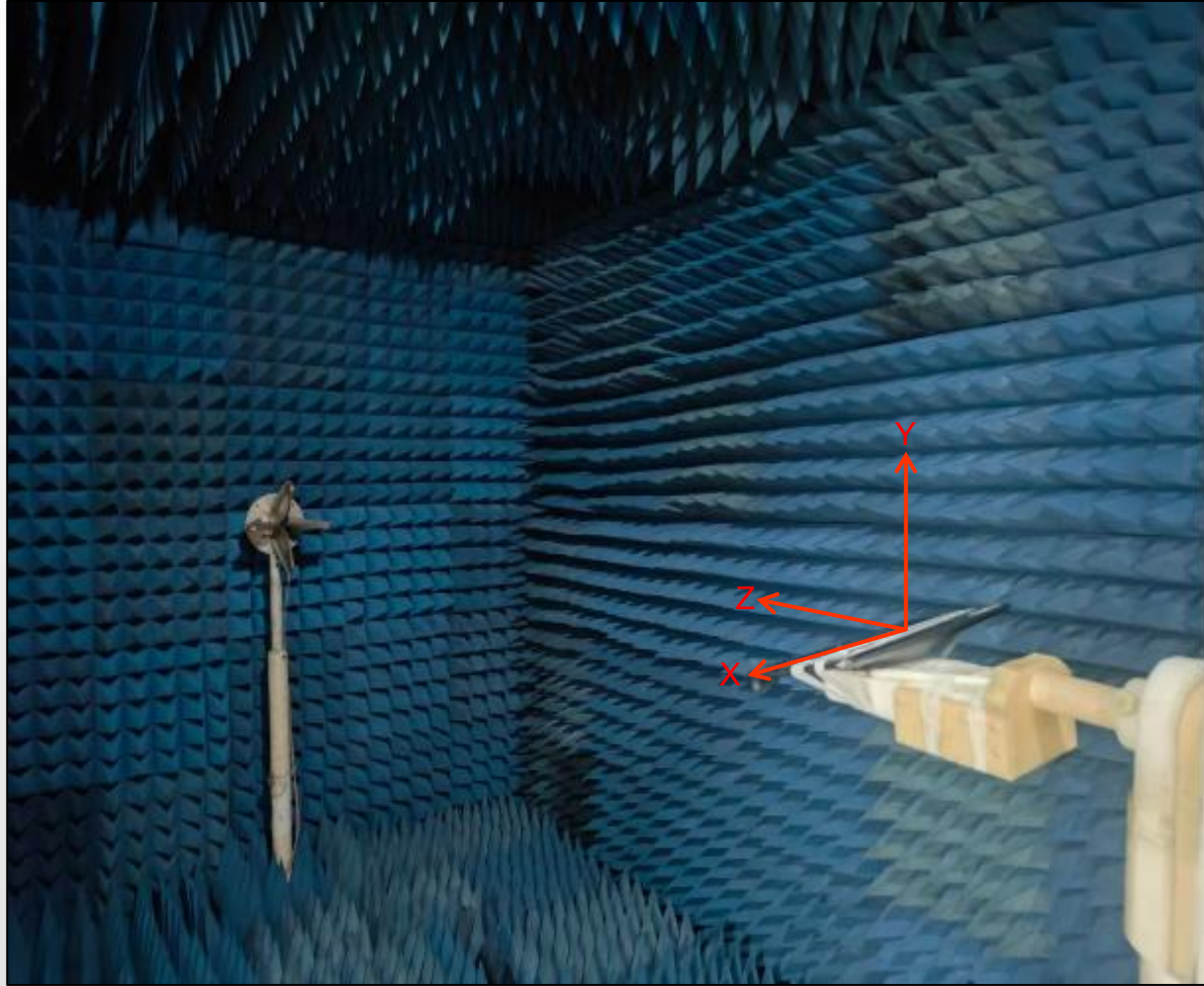


These 3 places are covered with conductive velvet to ground the screen



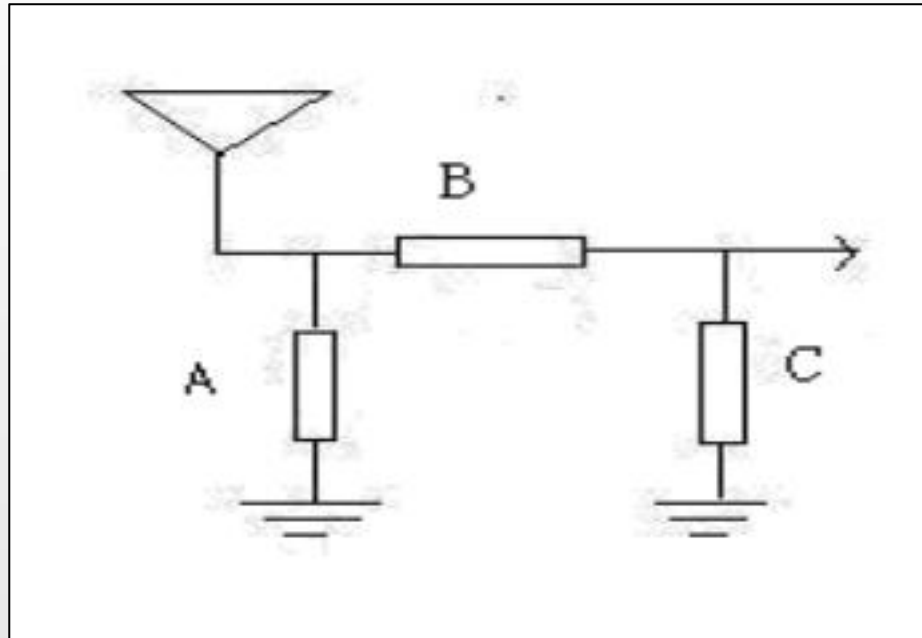
# topolink

四、Test photo:

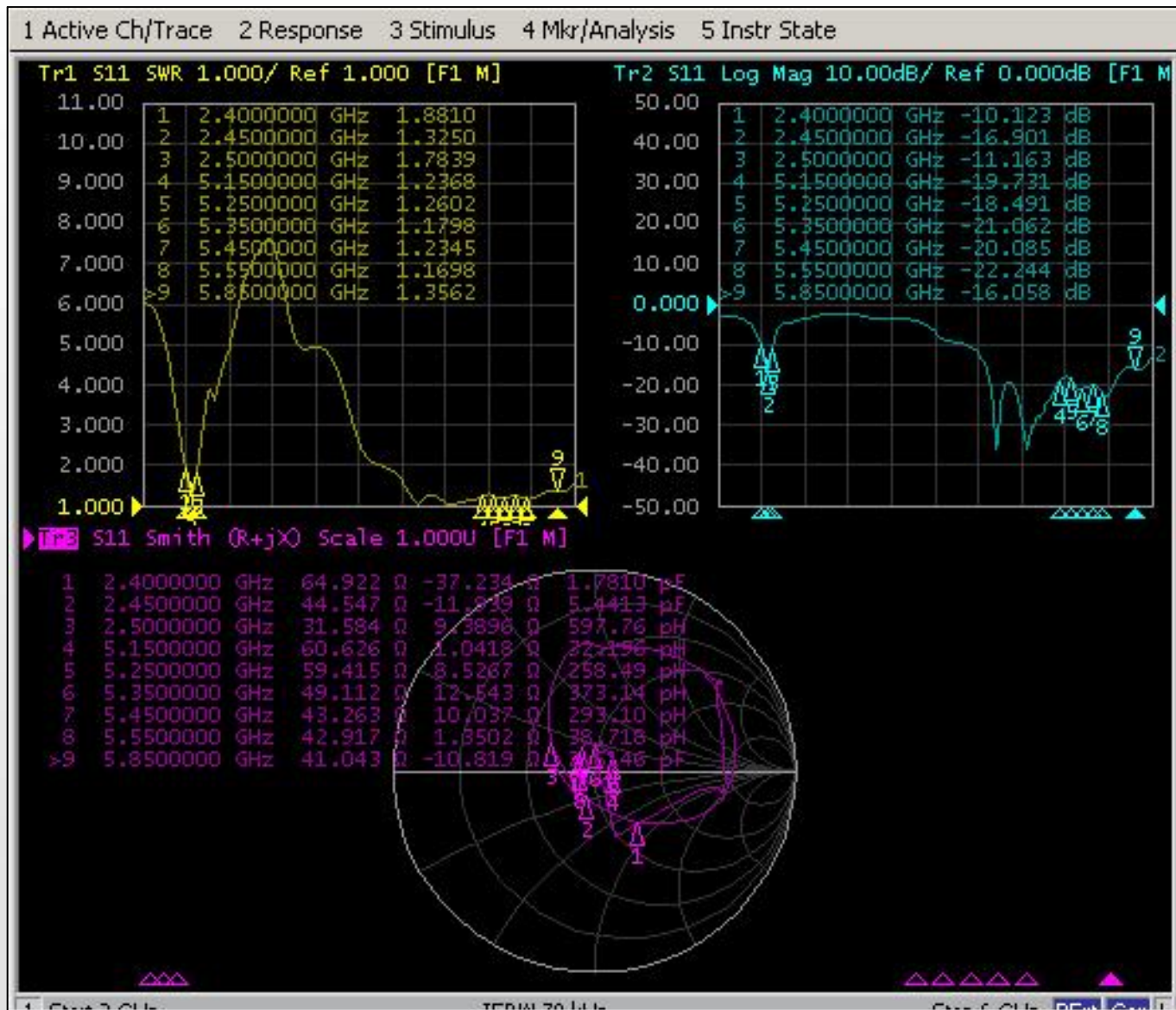


# topolink

## 五、 Matching circuit.



## 六、S11, ReturnLoss, Smith:



# topolink

## 七、Antenna Efficiency Gain:

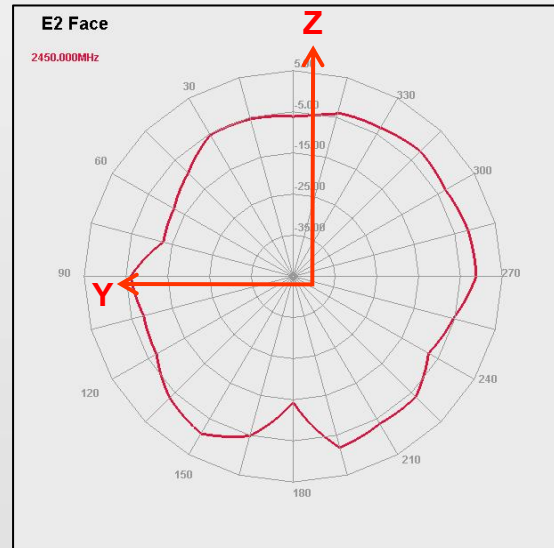
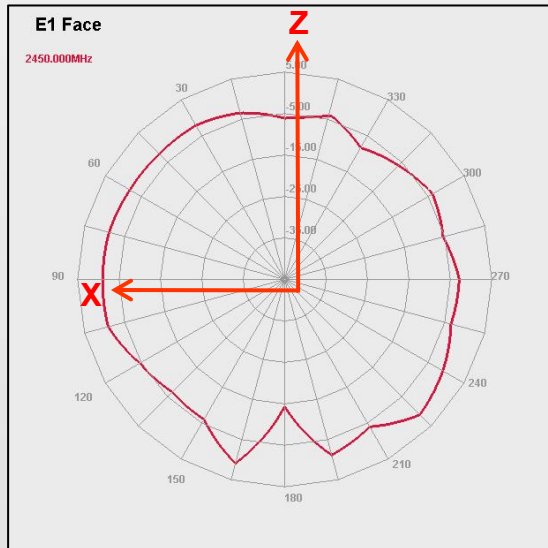
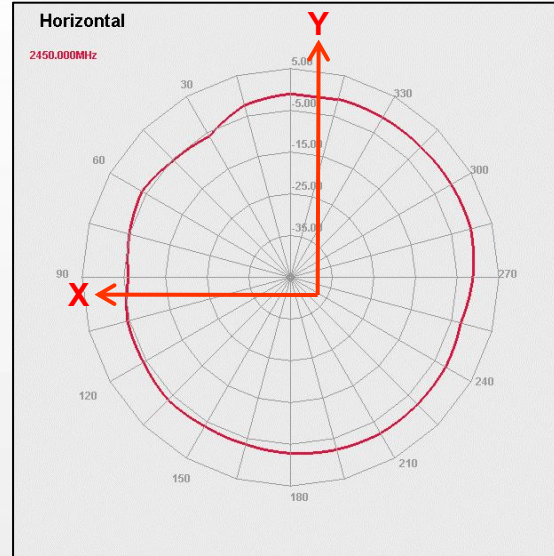
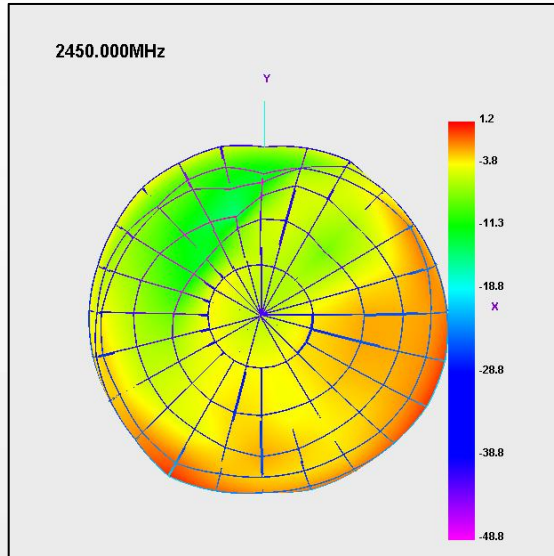
Freq (MHz)	Effi (%)	Gain (dBi)
2400	48.31	1.1
2405	49.71	1.13
2410	49.87	1.14
2415	50.87	1.38
2420	52.38	1.51
2425	50.01	1.51
2430	50.03	1.54
2435	51.35	1.86
2440	51.79	1.62
2445	53.04	1.47
2450	52.05	1.21
2455	51.31	1.13
2460	52.06	1.25
2465	52.5	1.29
2470	52.25	1.39
2475	53.24	1.51
2480	53.9	1.58
2485	54.89	1.68
2490	51.13	1.84
2495	51.29	1.82
2500	51.25	1.79

Freq (MHz)	Effi (%)	Gain (dBi)
5150	53.3	2.25
5178	51.98	2.16
5206	50.41	1.87
5234	53.7	2.16
5262	56.6	2.37
5290	55.37	2.17
5318	53.5	1.97
5346	59.85	2.49
5374	59.29	2.35
5402	56.44	2.16
5430	56.19	2.34
5458	53.16	2.29
5486	56.03	2.83
5514	56.01	2.47
5542	55.06	2.57
5570	54.13	2.44
5598	53.49	1.99
5626	52.71	1.47
5654	52.55	1.48
5682	50.29	1.36
5710	50.68	1.7
5738	52.4	2.07
5766	51.04	2.4
5794	52.4	2.72
5822	55.07	3.14
5850	50.79	2.78



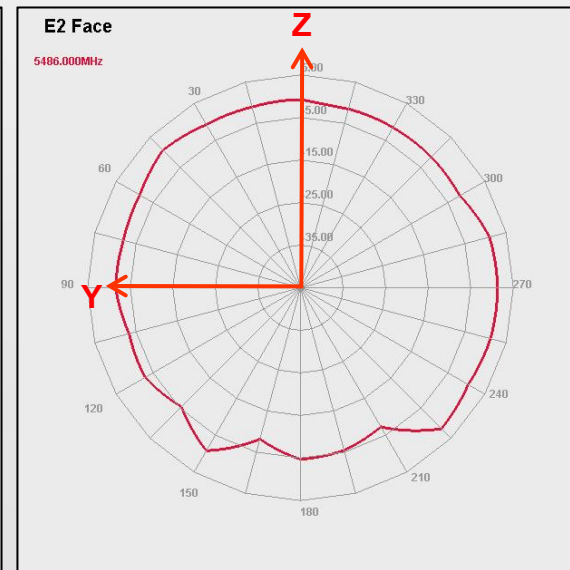
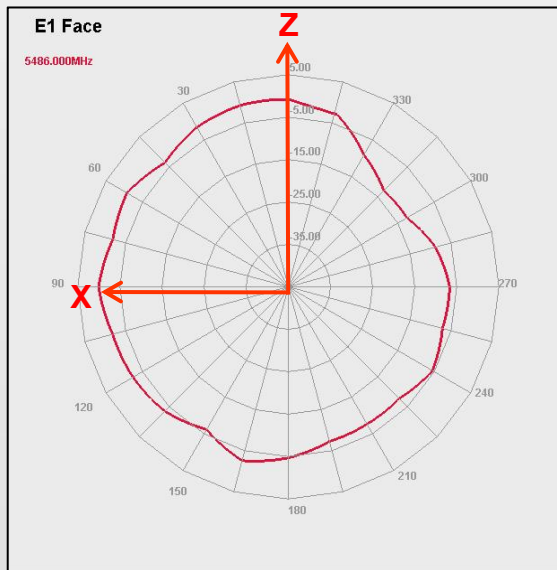
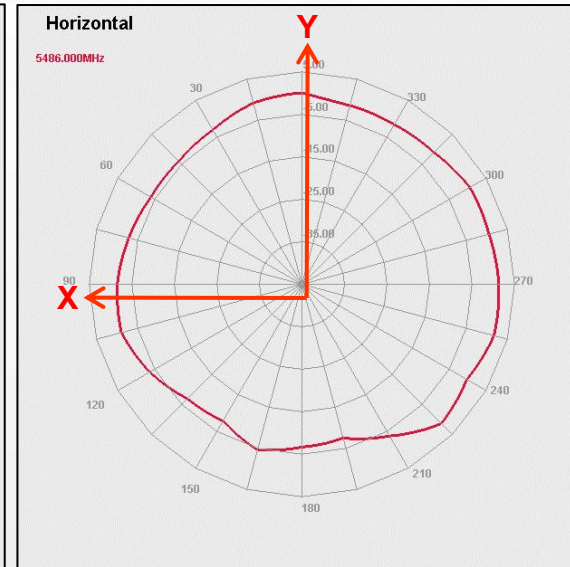
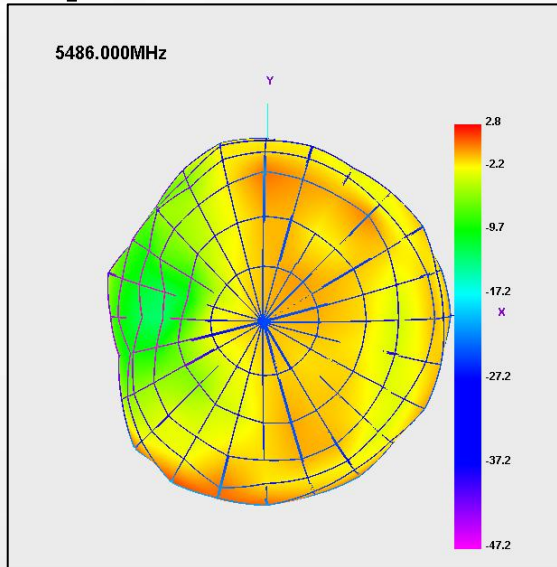
# topolink

## 八、2.4GWIFI Antenna pattern:



# topolink

## 九、5GWIFI Antenna pattern



# topolink

## 十、WIFI active data:

WIFI2.4G b模				
Test		WIFI		
Result		1	6	11
TRP (dBm)	11MBps	14.76	14.23	14.38
Test		WIFI		
TIS (dBm)	11MBps	-84.42	-82.87	-83.83

WIFI5G a模					
Test		WIFI			
Result		36	64	149	165
TRP (dBm)	54MBps	11.56	11.42	11.89	11.42
Test		WIFI			
TIS (dBm)	54MBps	-72.22	-72.56	-72.57	-71.46