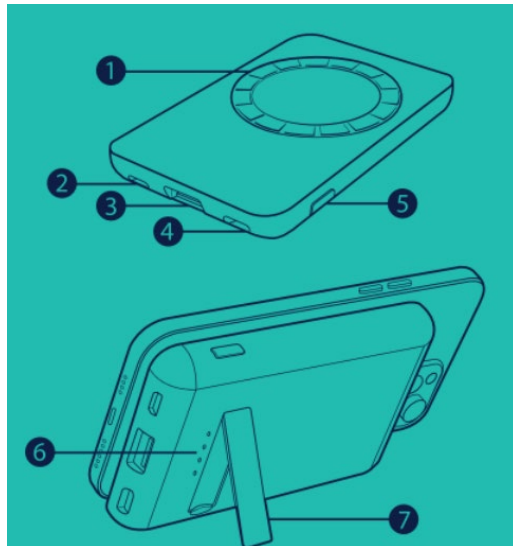


Manual



Specification:

- Coils: 1pc
- Capacity: 5000mAh (18.5Wh)
- USB-A Output: DC5V/2.4A
- Type-C Input&Output: DC5V/2.4A
- Micro Input: DC5V/2A
- Materiel: RABS
- Size: 107*65*17mm

Accessory:

- Manual
- 30CM Type-C Charging Cable
- Magnet ring

Product overview:

1. Wireless Charge Surface
2. Type-C port
3. USB-A port
4. Micro-USB port
5. ON/OFF Button
6. LED Indicator
7. Support stand

To charge the power bank:

- Connect the wireless power bank with micro USB or Type C cable to the power adapter(not included) for charging the wireless power bank.
- Battery status indicator light(7.) in green when wireless charging output.

Charging mobile phones and other electronic devices:

- **Wired charging:** Connect to USB cable to your mobile phone/device using the appropriate connector. connect the other end of the USB cable to the out port of the wireless power bank. Your mobile phone/device should display the status of charging.
- **Wireless charging:** Click (one time) the power button to turn on the wireless function, then the battery status indicator light will lights up and place your mobile phone/device on the magnet wireless charging area, wireless charging output LED light in green is charging successfully.

Security and Precaution:

- Some smartphone cases may block the wireless charging.
- Do not place other materials, like metal objects, magnets, and magnetic stripe cards, between the mobile device and the wireless charger pad.
- When the mobile device is not placed on the charging area accurately, your mobile device may not charge properly.
- Please do not expose this device to moisture or heat sources.
- Please stop to use it immediately if battery is bulge,leaking or smell.
- Please don't charge with wireless charging for mobile when recharge this product.
- Wired and wireless charging can't use at the same time.
- This product is not a toy, not suitable for children under the age of 7.

FCC Caution:

This device complies with part 15 of the FCC Rules. Operation is subject to the following two conditions: (1) This device may not cause harmful interference, and (2) this device must accept any interference received, including interference that may cause undesired operation.

Any Changes or modifications not expressly approved by the party responsible for compliance could void the user's authority to operate the equipment.

Note: This equipment has been tested and found to comply with the limits for a Class B digital device, pursuant to part 15 of the FCC Rules. These limits are designed to provide reasonable protection against harmful interference in a residential installation. This equipment generates uses and can radiate radio frequency energy and, if not installed and used in accordance with the instructions, may cause harmful interference to radio communications. However, there is no guarantee that interference will not occur in a particular installation. If this equipment does cause harmful interference to radio or television reception, which can be determined by turning the equipment off and on, the user is encouraged to try to correct the interference by one or more of the following measures:

- Reorient or relocate the receiving antenna.
- Increase the separation between the equipment and receiver.
- Connect the equipment into an outlet on a circuit different from that to which the receiver is connected.
- Consult the dealer or an experienced radio/TV technician for help.

The device has been evaluated to meet general RF exposure requirement. The device can be used in portable exposure condition without restriction.