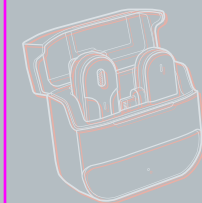


FRONT

LATEUR WIRELESS MICROPHONE



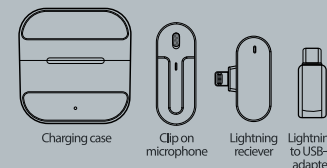
Origaudio

MANUAL

INTRODUCTION

The Lateur wireless microphone provides professional level audio output without having to plug and play into an APP. It is the perfect accessory for: live webcasting, voice recording, video teaching and much more.

Included in this package are the microphone charging case, clip on microphone transmitter, receiver with lightning connector, and lightning to USB-C adapter.



Charging case
Clip on microphone
Lightning receiver
Lightning to USB-C adapter

FEATURES

Frequency.....2.4GHz wireless
Microphone Battery.....3.7V/70 mAh
Case Battery.....3.7V/300 mAh
Charging Voltage.....DC5V (USB C)
Dimensions.....2.3 x 2.5 x 1
Weight.....0.11 lbs

INCLUDED IN BOX

- (1) Charging box*1
- (2) Microphone transmitter*1
- (3) Lightning Receiver*1
- (4) Lightning to USB-C adapter*1
- (5) Type-C charging cable*1
- (6) User manual*1

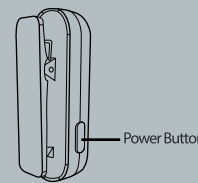
HOW TO USE

Step 1: Connect the Lightning connector of the receiver to your mobile phone.

If needed, connect the lightning to USB-C adapter onto the connector and then plug in to your phone.

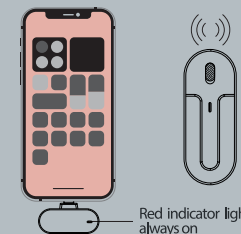


Step 2: Press the power button on the clip on microphone and the light will turn green. The microphone should now be powered on.



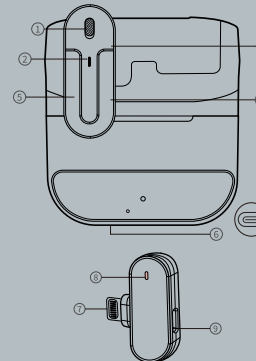
Power Button

Step 3: The red light on the receiver will always be on. You can now use the microphone by opening APPs such as camera, live video, voice recorder, etc.



Red indicator light always on

BACK



FUNCTIONS

- ① Wind proof mesh
- ② Microphone indicator light
- ③ Wireless microphone type-c charging port
- ④ Microphone clip
- ⑤ Power switch
- ⑥ Charging box type-c charging port
- ⑦ Wireless receiver lightning connector
- ⑧ Receiver indicator light
- ⑨ Receiver charging port

*The microphone is equipped with a built-in battery, which can be used only after being charged. The power for the receiver is supplied by the phone it is plugged in to. (⑨) Type-c port is only used for phone charging)

MICROPHONE

FUNCTION	HOW TO USE
Power on	Press and hold the start button for 2 seconds, the green light will turn on
Shut down	Press and hold the start button for 3 seconds, the green light will turn off and the device is now powered off
Pairing search	Slow flashing green light
Clear a previous pairing	Press the start button 4 consecutive times, and the green light will flash quickly
Successful connection	The green light will stay illuminated
Charging	The red light will stay illuminated
Fully charged	Red light will turn off
Low battery	Blue light will flash slowly
Automatic Power off	No connection for 3 minutes, will result in automatic shutdown

LIGHTNING RECEIVER

FUNCTION	HOW TO USE
Power on	Plug into mobile phone and power on, the red will turn on
Shut down	Unplug from the phone and power receiver off
Successful connection	The red light will be illuminated
Pairing search	Slow flashing red light
Remove phone from automatic pairing	Double click the reset button until the red light flashes quickly

FCC ID: 2AWVU-LATEUR
 Responsible Party: Foflyfour group LLC
 Company name: Foflyfour group LLC
 Address: 1770 S. 5350 W Ste 100 Salt Lake City, Utah 84104, United States
 Tel: 801-727-1400
 E-mail: origaudio.help@hpgbrands.com

ADDITIONAL INSTRUCTIONS

If your phone needs to be charged during use of the wireless clip on microphone, you can still charge your phone directly by connecting a charging cable to the wireless adapter.

Note: This is only applicable to devices with a lightning charger.



This device complies with part 15 of the FCC Rules. Operation is subject to the following two conditions: (1) This device may not cause harmful interference, and (2) this device must accept any interference received, including interference that may cause undesired operation.

FCC Caution: Any changes or modifications not expressly approved by the party responsible for compliance could void the user's authority to operate the equipment.

NOTE: This equipment has been tested and found to comply with the limits for a Class B digital device, pursuant to part 15 of the FCC Rules. These limits are designed to provide reasonable protection against harmful interference in a residential installation. This equipment generates, uses and can radiate radio frequency energy and, if not installed and used in accordance with the instructions, may cause harmful interference to radio communications. However, there is no guarantee that interference will not occur in a particular installation. If this equipment does cause harmful interference to radio or television reception, which can be determined by turning the equipment off and on, the user is encouraged to try to correct the interference by one or more of the following measures:

- Reorient or relocate the receiving antenna.
- Increase the separation between the equipment and receiver.
- Connect the equipment into an outlet on a circuit different from that to which the receiver is connected.
- Consult the dealer or an experienced radio/TV technician for help.