

PG11(Wireless USB Adapter)

Installation Guide



This device complies with part 15 of the FCC Rules.

Operation is subject to the following conditions:

- (1) This device may not cause harmful interference, and
- (2) this device must accept any interference received including interference that may cause undesired operation.

USB Adapter (Realtek) Installation Guide

This manual is divided into three parts: Windows XP, Windows 7 / 8 / 8.1 /10, and Mac

1 .Windows XP

Please do the following steps to set up the software on your computer:

Step 1. Once the wireless USB adapter has been plugged in to a USB port, the following message will appear on screen. Click “Cancel”. (See picture below please) (If it does not pop-up, skip this step)



Step 2. Please insert the disc into your CD-ROM drive. The disc should auto start, displaying the following window. If it does not start due to the system settings, open My Computer, find the Setup.exe file in the folder “windows” in your CD-ROM directory.

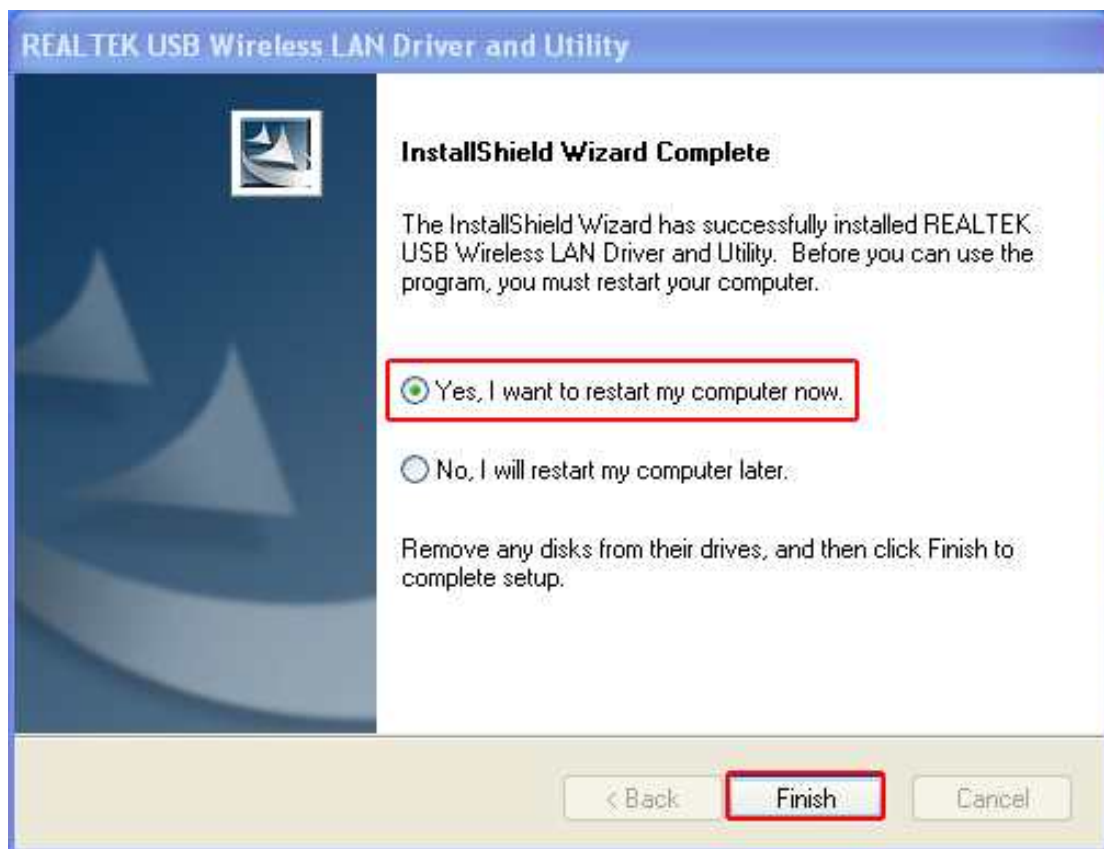
If you do not have a CD-ROM Drive, you can download at www.szedup.com

Devices with Removable Storage





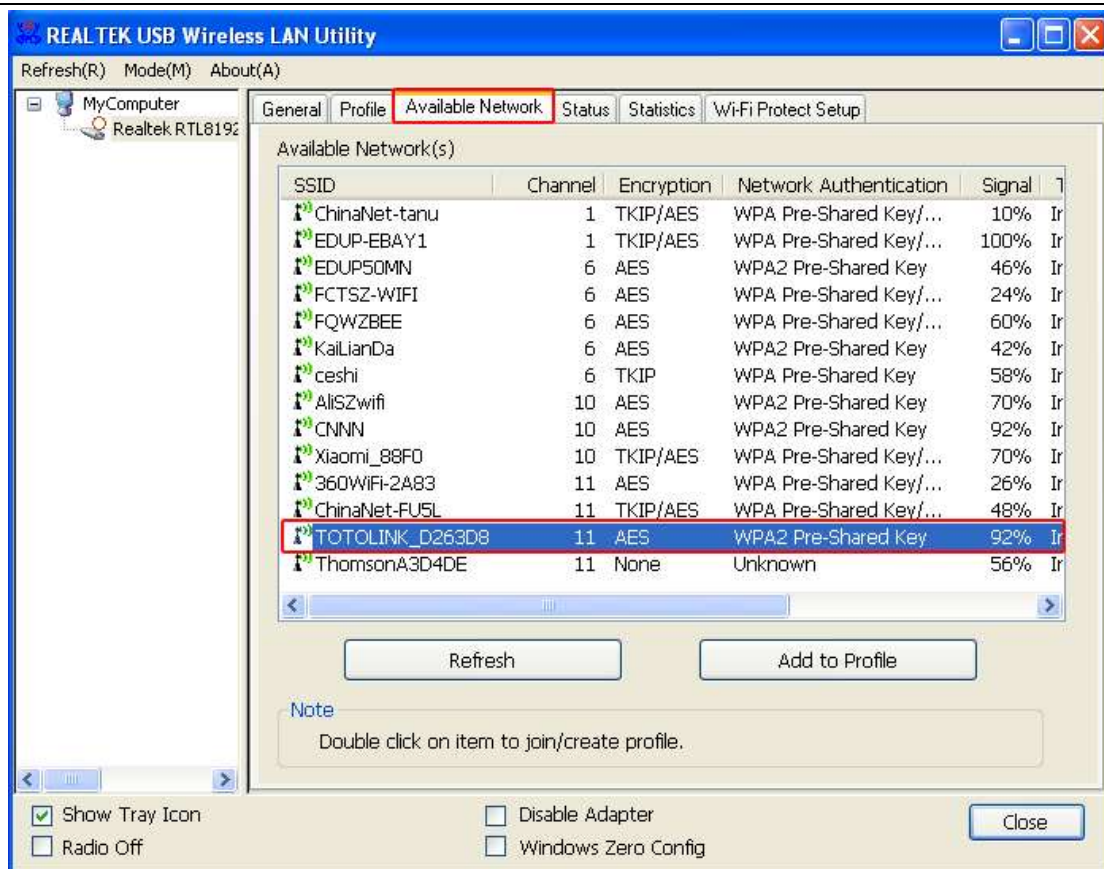
Step 3. Double click the “Setup.exe” file and the software will initialize. Then please choose “I accept the terms of the license agreement” and click “Next”.

Step 4. Continue the installation wizard and finish it. You will have to restart your computer for the driver to work.

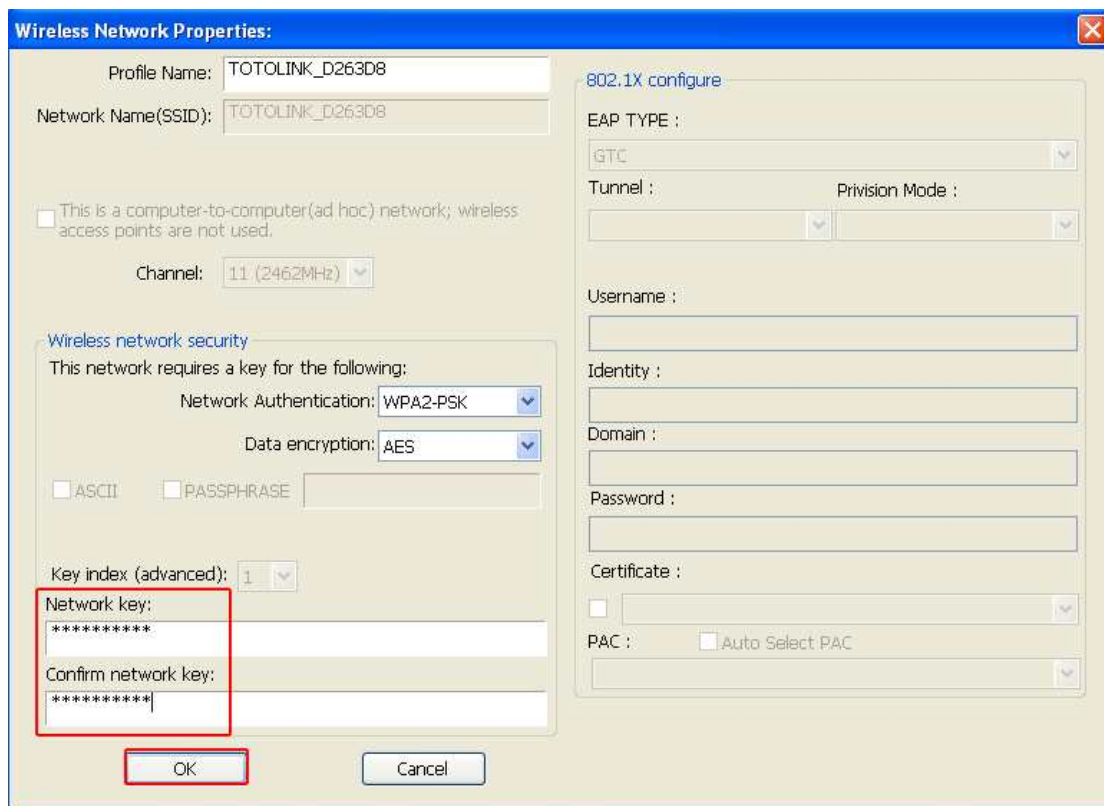


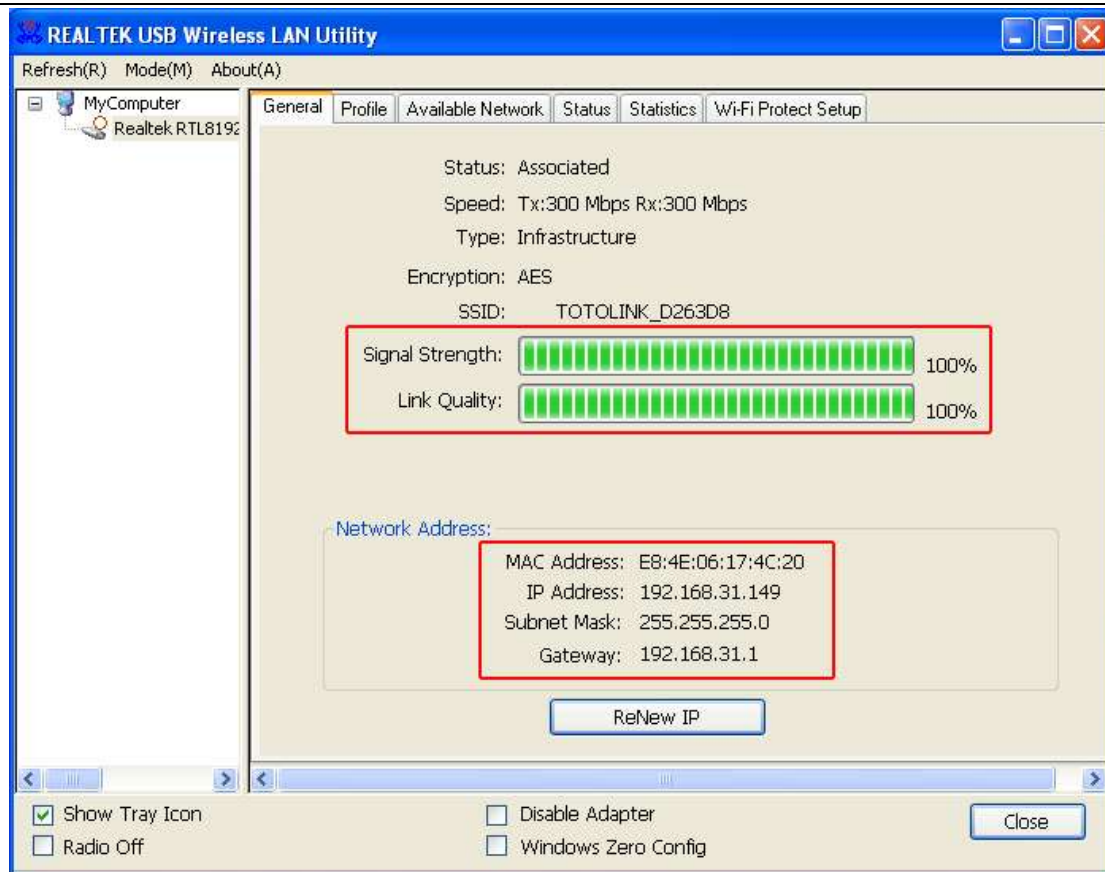
Step 5:

Click the icon  in the Windows system tray, which is located in the bottom-right corner of your computer screen or double click , and select "View Available Wireless Networks" to launch the utility. Find your network in the list of available networks. See image below.



Double click on your network and type in your Network Key (the WiFi security password you chose while setting up your network or the internet provider gave you). You will have to confirm your Network Key.





Now you will have access to the internet.

2. Windows 7 / 8 / 8.1 / 10

This example uses Windows 7, but if you have Win 8 or 10, the steps are the same.

Step 1. Once the wireless USB adapter is plugged into a USB port, insert the CD and locate Setup.exe in the folder “windows” in the disc directory. (If you do not have a CD-ROM slot in your computer, please download the driver from netdynwifi.com)




Step 2. Double click on the Setup.exe file, then continue the installation wizard.

Step 3. You will have to restart your computer for the installation to finish. Click “Yes, I want to restart my computer now.” to finish the installation. You may choose to restart it later if you do not wish to restart the computer immediately, but you will not be able to use the adapter without restarting.

Step 4:

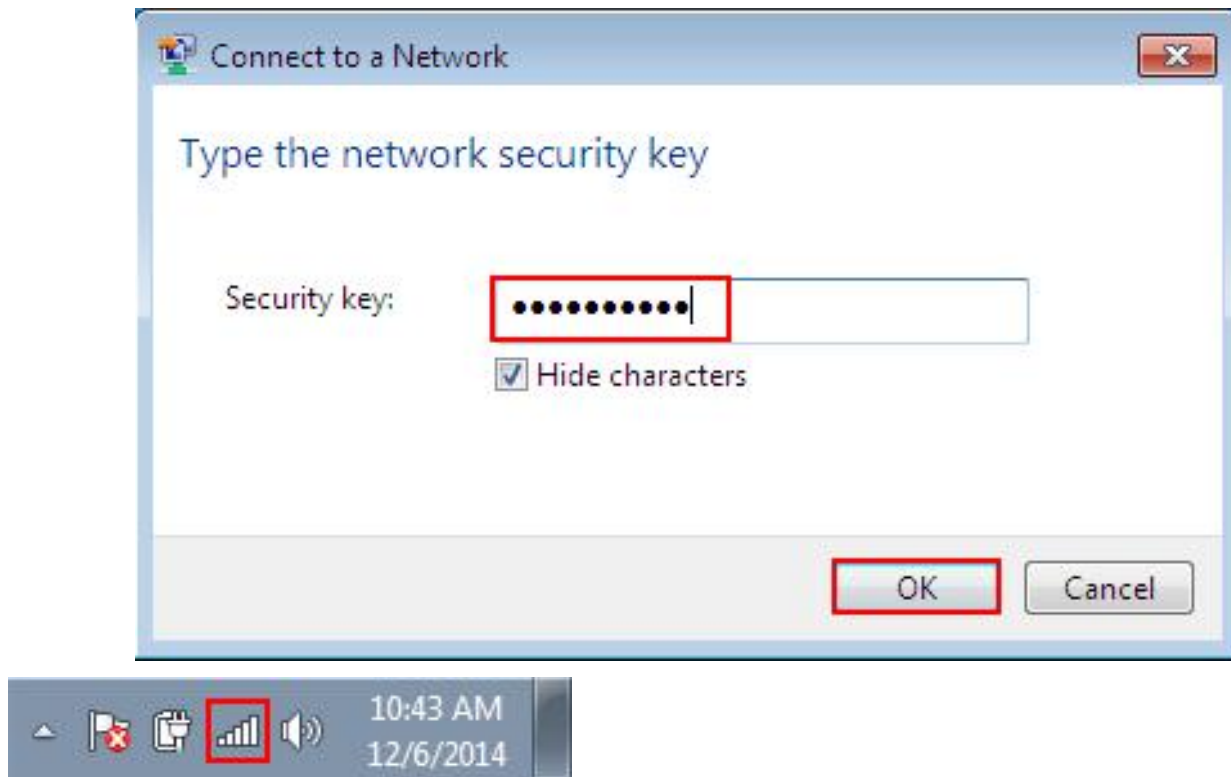
There are two ways to access your network:

Using the Windows Utility:

Step 4a. Click on the Icon  in the Windows system tray, which is located in the bottom-right corner of your computer screen and then double click the SSID you preferred (or click “connect” button)



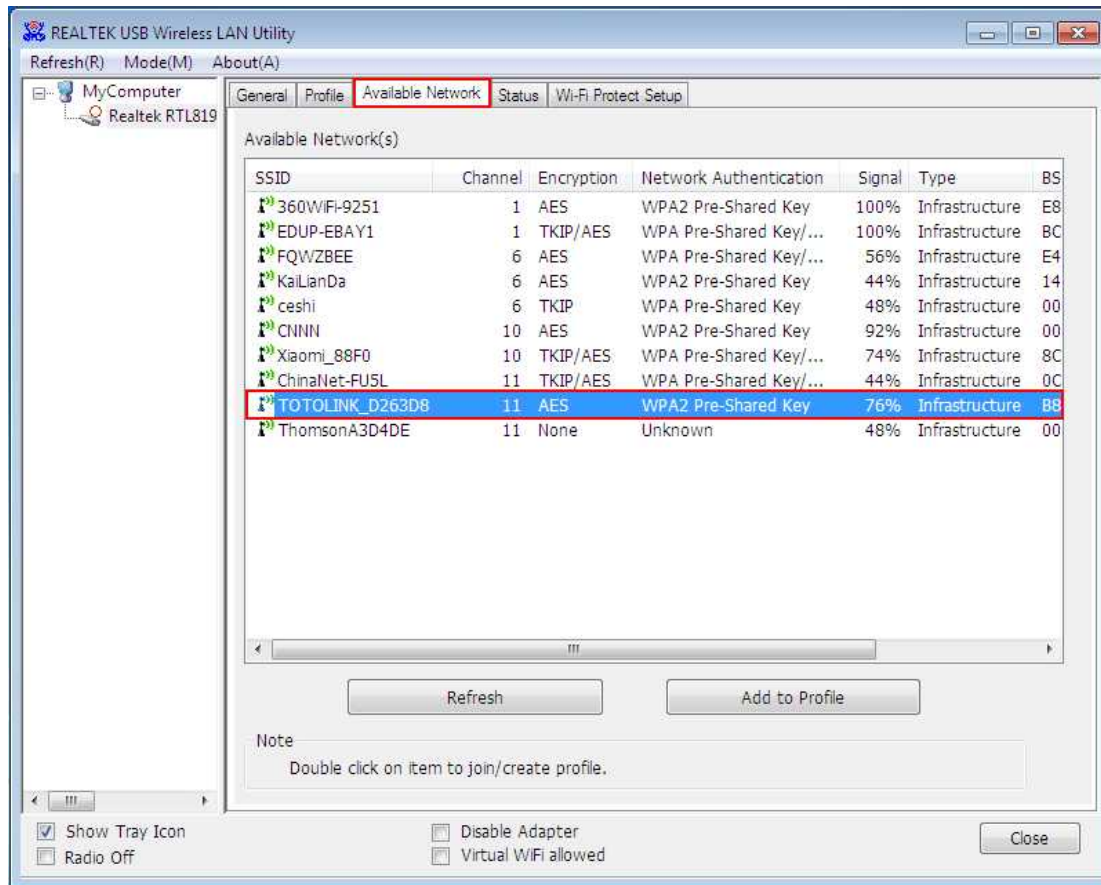
Open the wireless networking page and enter the security key. Click the “OK” button. Then you should have internet access when you open a internet window with any browser.



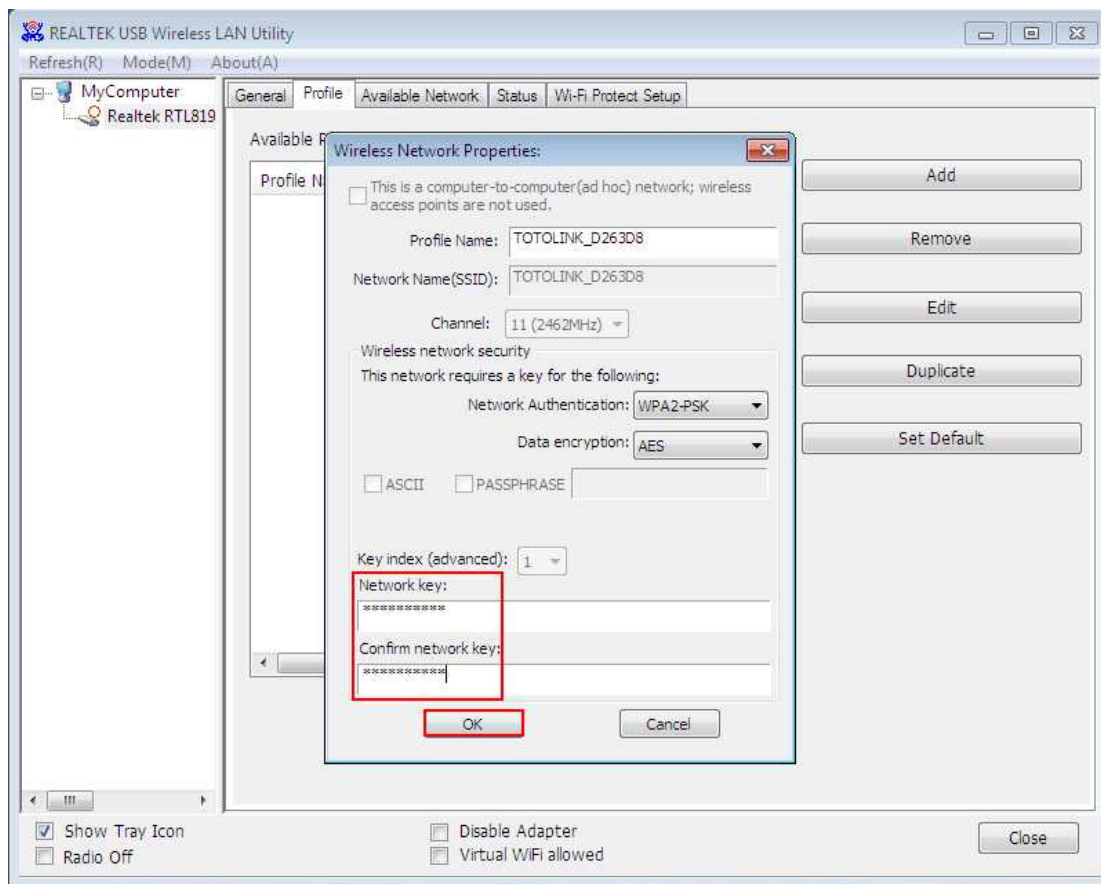
Suing the Realtek Utility:



Step 4b. Double click the icon in the Windows system tray, which is located in the bottom-right hand corner of your computer screen, and click on the “Available Networks” button Choose wireless signal (See figure 2) and double click.




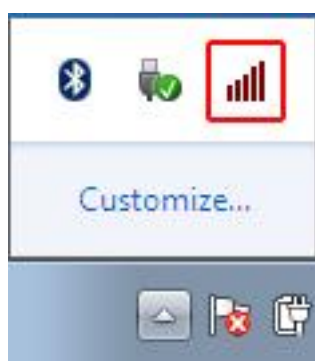
Double Click on your network name and enter your wireless password under Network Key and Confirm Network Key.



Now you will have access to the internet.



Note: If there is no  icon, please find it by clicking the small triangle at the bottom right of the screen. It has been hidden as following the picture shows:



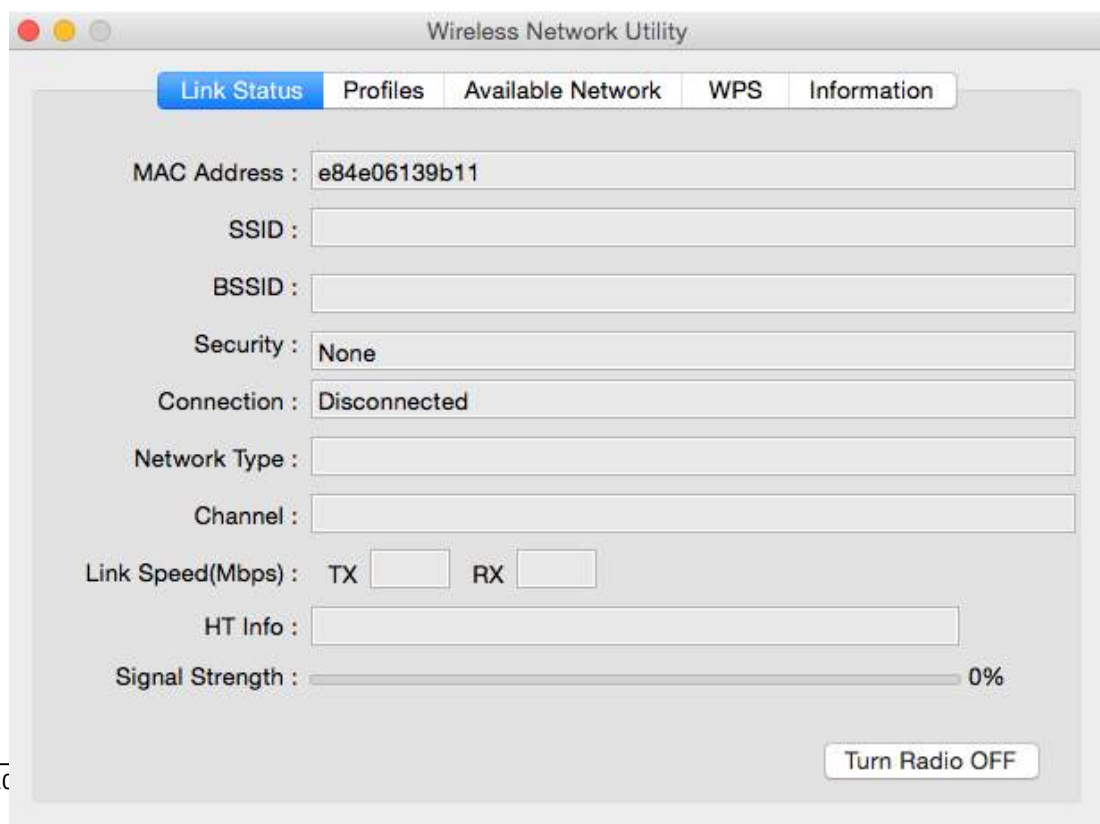
3. MAC OSX

Step 1. Unzip the Driver for MAC OS, and then open the file “Installer.pkg”.

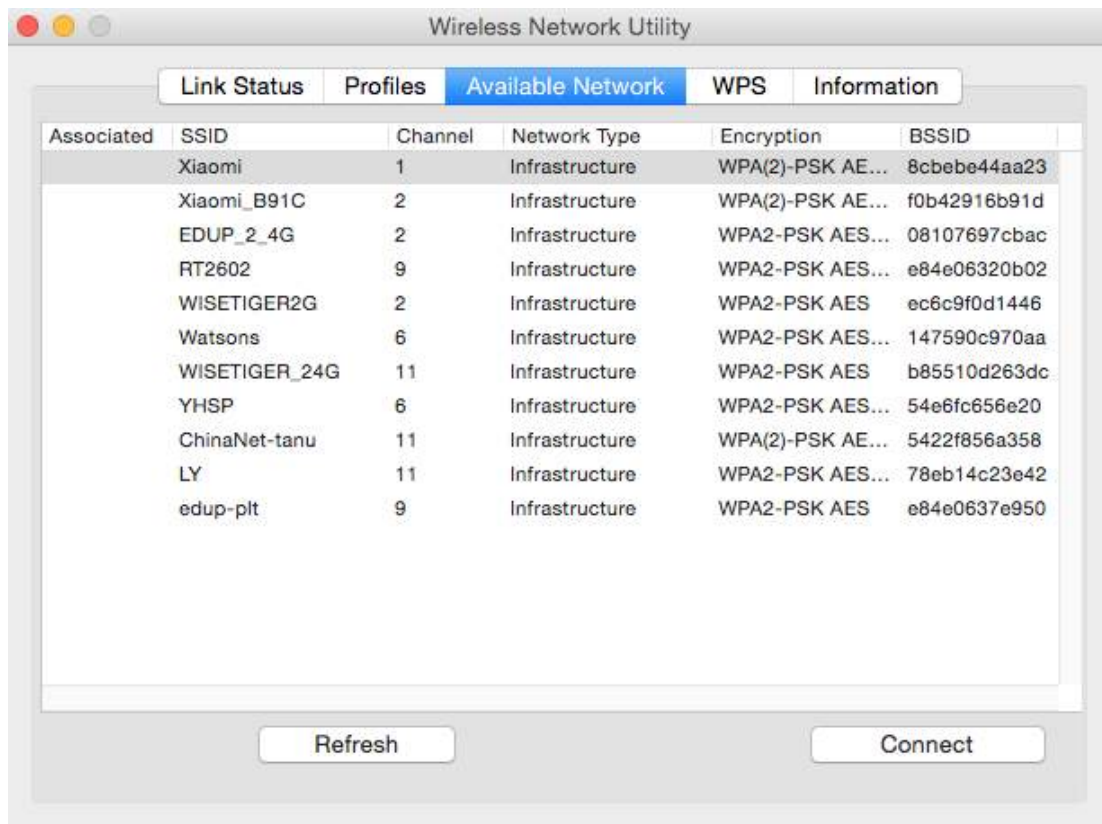


Step 2. After you install the driver, you’ll have to restart your computer.

Step 3. Open your Finder, and then click on “Applications”, find the “Wireless Network Utility” file, and click to open it.



Step. 4 Click the “Available Network”, and then choose your WiFi network, and click “Connect”, type your password and you can get access to the Internet.



Wireless Network Security Properties

Profile Name : RT2602

SSID : RT2602

Wireless Network Security Properties

Network Authentication : WPA2_PSK

Data Encryption : AES

☐ ASCII

Key index (advanced) : 1

Network key :

Confirm network key :

Cancel OK

Wireless Network Utility

Link Status Profiles Available Network WPS Information

MAC Address : e84e06139b11

SSID : RT2602

BSSID : e84e06320b02

Security : WPA2-PSK AES

Connection : Connected

Network Type : Infrastructure

Channel : 9

Link Speed(Mbps) : TX 300 RX 300

HT Info : BW:40MHz MCS:15

Signal Strength : 100%

Turn Radio OFF

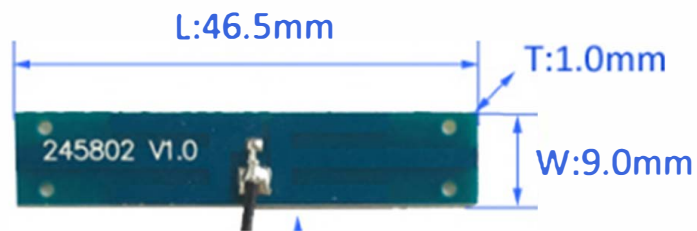
Products using PG11 can only use the antenna below.

Antenna Type	Model Name	Connector	Gain	Manufacture
Dual-band IPEX Antenna	Xls-857	IPEX/MMCX/MHF4 etc	≤ 5 dBi	Shenzhen XinLi Sheng
Dipole Antenna	WiFi antenna	SMA	≤ 4 dBi(2.4 GHz) / ≤ 7 dBi(5 GHz)	-

ANTENNA SPECIFICATION

Dual-band IPEX Antenna	
ITEM No.	XIs-857
Frequency range	2400-2500MHz / 5150-5850MHz
Gain	5dBi
VSWR	≤2.0
Polarization	Vertical
Input Impedance	50 Ohm
Size	L:46.5mm x W:9.0mm x T:1.0mm
Cable type	1.13
Connector	IPEX/MMCX/MHF4 etc
Operation Temperature	- 30 °c ~ + 65°c
Manufacture	Shenzhen XinLi Sheng

Antenna Photo & Length (mm)



XinLishen

Cable:1.13
100mm length
or customized



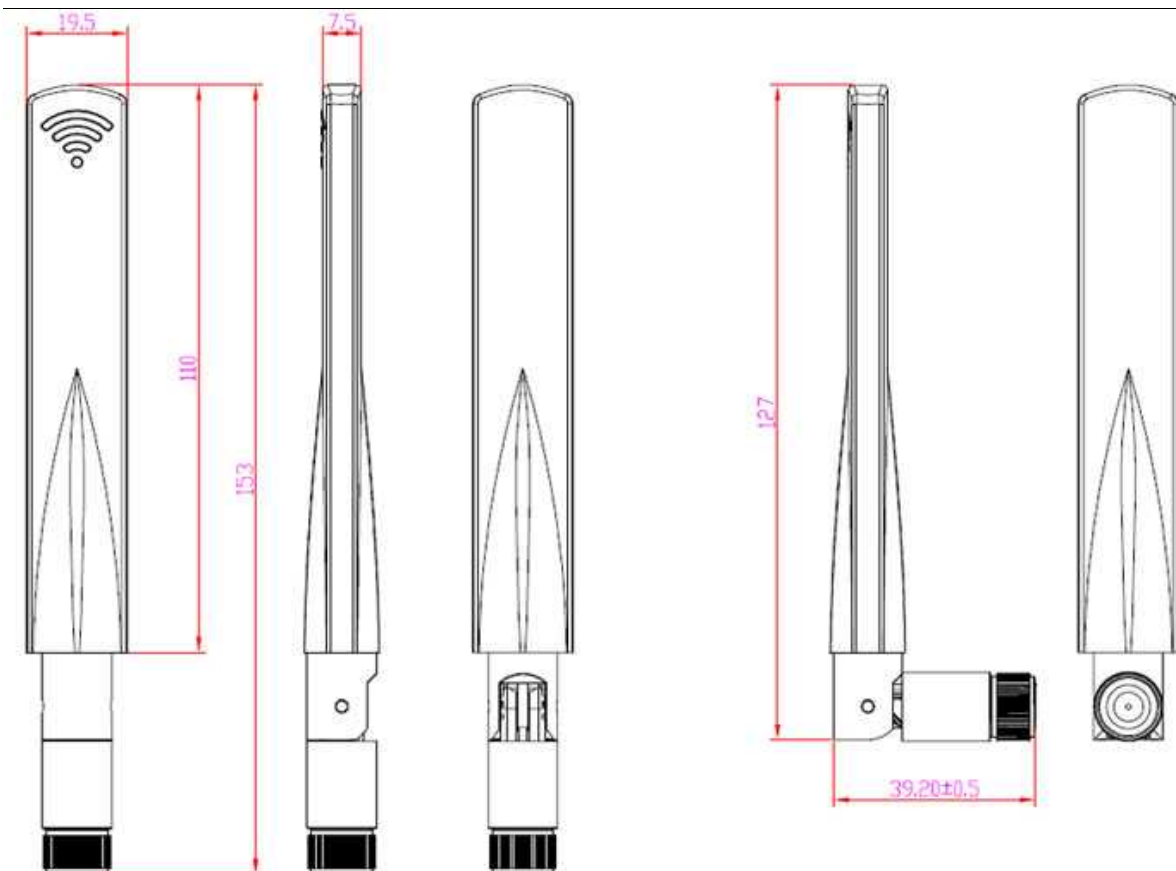
Ipex connector

Electrical

Frequency Range	2.4~2.5GHz / 5.15~5.85GHz
Gain	4dBi (2.4GHz) / 7dBi(5GHz)
VSWR	<2.0
Polarization	Linear. Vertical
Max power rating	5W
Impedance	50Ω

Mechanical Specifications

Connector Type	SMA
Coaxial Cable Type	RG-178
Radiator Material	PCB
Working Temperature	-25℃~+75℃
Humidity	90% @ 25℃
Dimensions	19.5*153mm



#APPENDIX 1

FCC Statement

Federal Communication Commission Interference Statement

This equipment has been tested and found to comply with the limits for a Class B digital device, pursuant to Part 15 of the FCC Rules. These limits are designed to provide reasonable protection against harmful interference in a residential installation. This equipment generates, uses and can radiate radio frequency energy and, if not installed and used in accordance with the instructions, may cause harmful interference to radio communications. However, there is no guarantee that interference will not occur in a particular installation. If this equipment does cause harmful interference to radio or television reception, which can be determined by turning the equipment off and on, the user is encouraged to try to correct the interference by one of the following measures:

- Reorient or relocate the receiving antenna.
- Increase the separation between the equipment and receiver.
- Connect the equipment into an outlet on a circuit different from that to which the receiver is connected.
- Consult the dealer or an experienced radio/TV technician for help.

FCC Caution: Any changes or modifications not expressly approved by the party responsible for compliance could void the user's authority to operate this equipment.

This device complies with Part 15 of the FCC Rules. Operation is subject to the following two conditions: (1) This device may not cause harmful interference, and (2) this device must accept any interference received, including interference that may cause undesired operation.

For product available in the USA/Canada market, only channel 1~11 can be operated. Selection of other channels is not possible.

IMPORTANT NOTE:

FCC Radiation Exposure Statement:

This equipment complies with FCC radiation exposure limits set forth for an uncontrolled environment.

This equipment should be installed and operated with minimum distance 20cm between the radiator & your body.

This device and its antenna(s) must not be co-located or operation in conjunction with any other antenna or transmitter.

This module is intended for OEM integrator. The OEM integrator is still responsible for the FCC compliance requirement of the end product, which integrates this module.



20cm minimum distance has to be able to be maintained between the antenna and the users for the host this module is integrated into. Under such configuration, the FCC radiation exposure limits set forth for an population/uncontrolled environment can be satisfied.

USERS MANUAL OF THE END PRODUCT:

The end user has to be informed that the FCC radio-frequency exposure guidelines for an uncontrolled environment can be satisfied. The end user has to also be informed that any changes or modifications not expressly approved by the manufacturer could void the user's authority to operate this equipment. If the size of the end product is smaller than 8x10cm, then additional FCC part 15.19 statement is required to be available in the users manual: This device complies with Part 15 of FCC rules. Operation is subject to the following two conditions: (1) this device may not cause harmful interference and (2) this device must accept any interference received, including interference that may cause undesired operation.

LABEL OF THE END PRODUCT:

The final end product must be labeled in a visible area with the following " Contains FCC ID: 2AWVMPG11". If the size of the end product is larger than 8x10cm, then the following FCC part 15.19 statement has to also be available on the label: This device complies with Part 15 of FCC rules. Operation is subject to the following two conditions: (1) this device may not cause harmful interference and (2) this device must accept any interference received, including interference that may cause undesired operation.

That module is limited to installation in mobile or fixed applications, according to Part 2.1091(b).

That separate approval is required for all other operating configurations, including portable configurations with respect to Part 2.1093 and different antenna configurations.

This module is intended for OEM integrator. The OEM integrator is still responsible for the FCC compliance requirement of the end product, which integrates this module.

Additional Test, Part 15 subpart B disclaimer

The final host / module combination need to be evaluated against the FCC part 15B criteria for unintentional radiators in order to be properly authorized for operation as a Part 15 digital device.

The host integrator installing this module into their product must ensure that the final composite product complies with the FCC requirements by a technical assessment or evaluation to the FCC rules, including the transmitter operation and should refer to guidance in KDB 996369

The OEM integrator has to be aware not to provide information to the end user regarding how to install or remove this RF module in the user's manual of the end product which integrates this module.

The OEM integrator is responsible for additional system-level EMI/EMC and Product Safety testing and certification that applies in the U.S. and other countries to the host system containing the Module. This includes, but is not limited to, Federal Communications Commission ("FCC") Part 15 Class B Digital Emissions, China CCC, Taiwan BSMI, Korea KC, ETSI EN 301 489-1 and others.

These system-level EMC tests are to be done with the Module installed and included in the scope of the submission.

Some of the countries for which modular certifications are provided require additional submissions, authorizations or import permission by the system-vendor or importer. The integrator is responsible for these additional actions.



PIXXGEN Corporation

5F, SMARTBAY, 123, Beolmal-ro, Dongan-gu

Anyang-si Gyeonggi-do, 431-804 Korea

Tel: +82-70-4846-8888 FAX: +82-2-6455-2905

Web: <http://www.pixxgen.com>