

Portable Body Composition Scanner

The portable body composition scanner uses the Bio-electronics Impedance Analysis (BIA), which measures and analyzes bioelectrical resistance values.

You can check the analyzed body composition through the Kuvings Health Friend Smart Juicer app linked with the body composition scanner.

Periodically measure body composition and get information to manage body composition through the app. This product used by connecting to the Bluetooth of a mobile device(Smartphone iPhone 5S iOS 9.0 or later / Adroid OS 4.3.3 or later).

Package contents

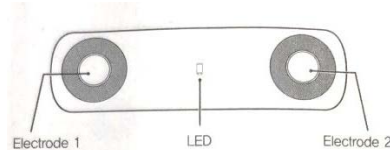


< Device >

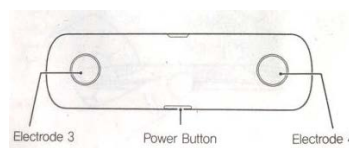
< User Manual >

< battery >

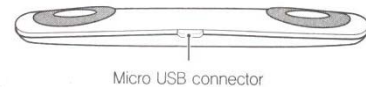
Device Description



< Front >



< Bottom >



< Micro USB Connector >

How to Use

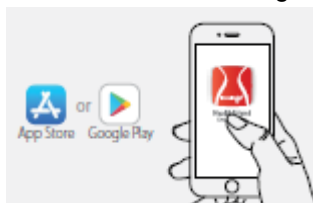
APP

You can download the Kuvings Healthfriend Smart Juicer app from Google Play or Apple App Store.

* Smartphone iPhone 5S_iOS 9.0 or later version / Android_OS 4.3.3. or later version

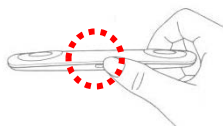
1. Before Using Body Composition Scanner

1) Please download Kuvings Healthfriend Smart Juicer app from the App Store or Google Play.



2) Once installed, run the app, create your user profile.

3) Press the power button on the side of device and check for LED illumination. And sync the product and your smart phone.

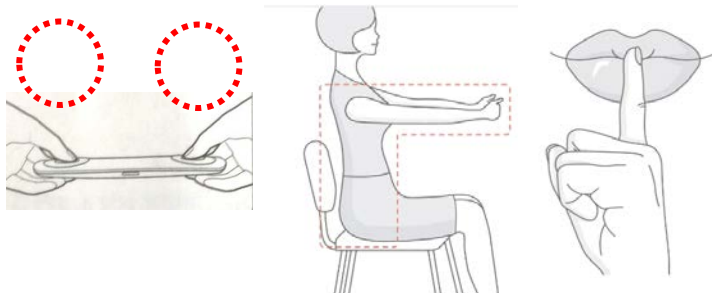


4) Connect the app with your phone.

2. How to measure body composition

1) Make sure your phone and the app are connected.

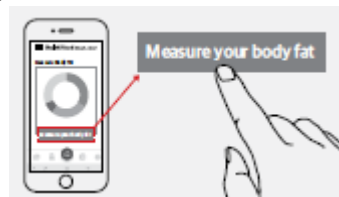
2) Extend your arms to hold four electrodes correctly with your thumb and index fingers.



3) Please don't move or speak while measuring.

※ Keep your arms straight and do not talk or move during the measurement.

4) Push the 'Measure' button from the Menu.



5) Once the measurement is complete, check the result from the App.

Tips for accurate Measurement

1. Please stand up for about five to ten minutes, and then sit for the measurement.
2. In order to avoid errors caused by food, measure while fasting before a meal or two hours after a meal.
3. Please don't move or speak while measuring.
4. As water metabolism in body works by hour, make sure to measure at the same time of day at room temperature (20~25°C).
5. In order to avoid errors caused by water content in body, please measure after at least two hours since waking up.
6. Please measure after discharging feces and urine.
7. Do not measure after a sweaty workout, dynamic activity, or sauna.

Notes on use

1. Consult with an expert first if you consider a diet/exercise program for the purpose of weight loss.
2. Do not use the measuring instrument near a device that generates and uses strong electromagnetic waves such as microwave oven. It may occur a measurement error.
3. Please be careful of any foreign substance on the electrodes of the measuring instrument. If there is any foreign substance on the device, remove it with a soft cloth, or with a minimum amount of water, cleaner and spray if required, before using.
4. Please do not take measurement while pregnant or suspected to be pregnant or during menstruation.
5. This product may affect pacemaker, ECG-related medical appliances, artificial heart, heart-lung

machine and other medical devices. Thus, do not use this product if you are using one of those devices.

6. Do not use the instrument for the elderly or the physically and mentally weak.

7. Do not use the measurement instrument for purposes other than the specified.

How to Manage the Instrument

Please make sure the electrodes of the instrument are not stained with foreign substance.

(If there is any foreign substance on the device, remove it with a dry cloth before using.)

SPECIFICATIONS

Product : Portable Body Composition Scanner

Model : KBA-200

Size : 126X47X39 mm

Power Voltage : CR1620 Coin Cell Battery(DC+3.0V)

Transmission : Bluetooth 4.0(2,402MHz ~ 2,480MHz)

Weight : 61 g

Product Package : Device, Lithium Battery

Manufacturer : NUC Electronics Co., Ltd.

Origin : Made in Korea

FCC Information

This device complies with part 15 of the FCC Rules. Operation is subject to the following two conditions :

- (1) This Device may not cause harmful interference, and
- (2) This device must accept any interference received, including interference that may cause undesired operation.

Note: This equipment has been tested and found to comply with the limits for CLASS B digital device, pursuant to Part 15 of FCC Rules. These limits are designed to provide reasonable protection against harmful interference when the equipment is operated in a commercial environment. This equipment generates, uses and can radiate radio frequency energy and, if not installed and used in accordance with the instructions, may cause harmful interference to radio communications. However, there is no guarantee that interference will not occur in a particular installation. If this equipment does cause harmful interference to radio or television reception, which can be determined by turning the equipment off and on, the user is encouraged to try to correct the interference by one or more of the following measures:

- 1.1. Reorient or relocate the receiving antenna.
- 1.2. Increase the separation between the equipment and receiver.
- 1.3. Connect the equipment into an outlet on a circuit different from that to which the receiver is connected.
- 1.4. Consult the dealer or experienced radio/TV technician for help.

WARNING

Changes or modifications not expressly approved by the manufacturer could void the user's authority to operate the equipment.

"CAUTION : Exposure to Radio Frequency Radiation.

Antenna shall be mounted in such a manner to minimize the potential for human contact during normal operation. The antenna should not be contacted during operation to avoid the possibility of exceeding the FCC radio frequency exposure limit.

"ATTENTION: L'exposition aux rayonnements à fréquence radioélectrique.

Antenne doit être montée de telle manière à minimiser le risque de contact humain pendant l'utilisation normale. L'antenne ne doit pas être contactée pendant le fonctionnement pour éviter la possibilité de dépasser la limite de l'exposition aux fréquences radio de la FCC.

IC Information

This device complies with Industry Canada license-exempt RSS standard(s).
Operation in subject to The following two conditions: (1) this device may not cause interference, and (2) this device must accept any interference, including interference that may cause undesired operation of the device.

Le présent appareil est conforme aux CNR d'Industrie Canada applicables aux appareils radio exempts de licence. L'exploitation est autorisée aux deux conditions suivantes:

- 1) l'appareil ne doit pas produire de brouillage;
- 2) l'appareil doit accepter tout brouillage radioélectrique subi, même si le brouillage est susceptible d'en compromettre le fonctionnement.

FCC ID: 2AWUK-KBA-200IF

IC: 26374-KBA200IF