

CONQUEST S12 Pro

www.conquest.net

Button Description



- | | |
|---|--|
| 1. Fn key (SOS button /PoC Walkie Talkie button) | 11.ON/OFF |
| 2.PTT Walkie Talkie Key | 12.Selectable button |
| 3.Front Camera | ① Short press to take photo |
| 4.Interphone antenna interface | ② long press to turn On/Off the flashlight |
| 5.Return button | 13.Fingerprint recognition |
| 6.Home key | 14.SIM Card cover Screw |
| 7.Type C USB Interface | 15.NFC button |
| 8.Menu button | 16.Charge Contact |
| 9.Volume + key | 17.Flash Light |
| 10.Volume - key | 18.Rear Camera |

Dual SIM Dual Standby Single -Pass Description

"dual card dual standby single pass" design, two cards inserted in the phone cannot be used Voice and data services simultaneously.

When one of the cards is talking, The other card can not answer the call, If someone dials another card at this time, you may hear "The number you dialed is out of service, please redial later." "Sorry! The subscriber you dialed can not be connected for the moment, please redial later." or other voice prompts

When one of the cards is using data service, the other card had no data service act to use.

The above situation is the single-pass feature of the mobile phone, which can significantly reduce the power consumption and improve the standby time between, and the operator network status has nothing to do.

Suggest that you consult the local operator, open "missed call reminder", "call reminder" "secretary services" and other services to avoid missing calls in the above scenario without reminding problem.

ACCESSORIES IN PACKAGE

S12 Pro phone	1
Adapter	1
USB cable	1
Instruction manual	1
Warranty card	1
Magneto-Absorption charge cable	1
Intercom antenna	1
Battery	1
Type-C to 3.5 headphone adapter.....	1

Safety instructions

please read the instruction carefully before using the mobile phone to ensure you can use your phone safely and correctly.

1. Daily use

- ⊗Do not cover objects or apply film on the light sensor to affect the mobile phone normal use. If you are using a screen protector,do not wrap the light sensor Parts, it is recommended that you use a special screen protector with an opening for the light sensor.
- ⊗Please Use original or manufacturer-approved accessories. Unauthorized product alteration or repair their own may cause, you are unable to use this product and void the warranty.
- ⊗Do not keep the magnetic stripe card with phone for a long time, otherwise the magnetic stripe may be demagnetized.
- ⊗Do not expose your phone to strong sunlight as it may cause excessive heat damage.
- ⊗Do not connect with other unsuitable equipment.
- ⊗Do not disassemble the phone.
- ⊗Do not put your phone in high temperature or throw it into fire to avoid explosion.

2.Traffic safety

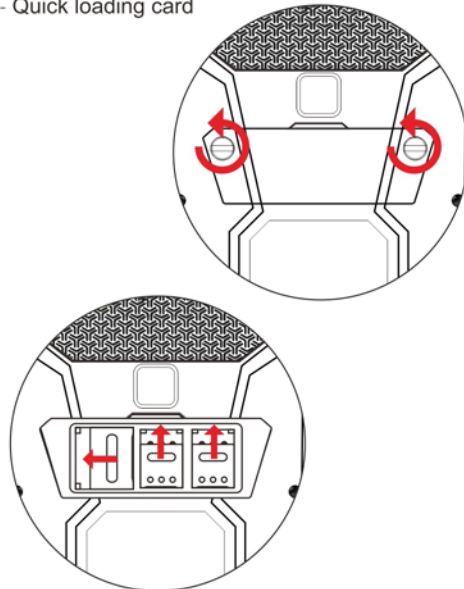
- ⊗Please do not use mobile phones while driving, follow relevant traffic regulations.
- ⊗Do not place your phone over the airbag of a car or Covered area.
- ⊗Please do not use mobile phones on the airplane. If necessary,tum off the phone.observe the relevant regulations of the airline, in areas and times where mobile phone use is prohibited.

3.Medical equipment

- ⊗Radio waves from mobile phones may affect some medical devices, such as the heart ,Pacemakers, cochlear implants, hearing aids, etc. Mobile phones and these medical devices should be kept more than 20 cm safe distance. If something abnormal happens, consult with the manufacturer, Restrictions on the use of mobile phones.

USE MACHINE TIPS

--- Quick loading card

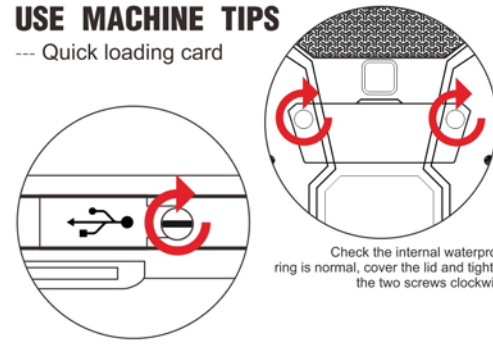


Like the picture show:

- 1.loosen the screw counterclockwise to open the back cover.
- 2.The two slots on the right side are SIM cards. When the machine is shut down, pull up the slot cover. Open the cap, put the SIM card in the right position, back the cap, pull the cap down and lock it.The clamp cap can complete the clamping.
- 3.The left card is SD card, which can support 2TB GB storage card.

USE MACHINE TIPS

--- Quick loading card



Tighten the USB charging port and tighten the screws clockwise

Check the internal waterproof ring is normal, cover the lid and tighten the two screws clockwise

WARNING

1. Please make sure the USB Jack/earphone Jack cover is well plugged in and SIM cards/SD card cover is screwed tightly before making waterproof testing.
2. The waterproof function may be affected after the drop devastatingly.
3. Prominent atmospheric pressure changing may cause the receiver/speaker/microphone unworking or noising, open the USB jack/earphone jack cover can restore the functions immediately.
4. Submerge the phone may affect the receiver/speaker/ microphone, swing the phone to dry the receiver/speaker/ microphone will recover the functions.

EASY TROUBLESHOOTING

PROBLEM	SOLUTION
Bubble after the horn / handset / Abnormal microphone	Throw the phone thrown, the trumpet membrane water thrown out until the water completely dry to return to normal; or use the hair dryer to the horn and the handset at the hair, you can quickly make the water dry, you can restore the normal volume.
Phone crashes / no response Unable to recharge / Quick restart	In the right side of the phone there is a quick reboot button labeled "RESET", in case of abnormal cell phone use, you can try to press this button to power off, and then re-press the power button.
Magnetic / can not charge Normal charge	Check the magnetism and the contact position of the charger if there is oxidation, if there is dirt and oxidation, available cotton swab alcohol wipe the seat and the contact location, wipe it clean.
Abnormal power consumption	If you find power consumption anomalies, please check whether long time open GPS positioning, Bluetooth, software intercom, hardware intercom and other high power software, press the [HOME] key to enter the background, close some running programs.
Do not know the card	In the off state, insert the phone card, the boot that can be used normally. If the card is switched on, please turn off the flight mode, or restart the phone. If you do not recognize it properly, try swabbing the card's chip with a cotton swab soaked in alcohol.
Mobile network can not be normal Internet	Please open Settings - Traffic Usage - Mobile Data Network opens. Or slide the screen into the shortcut menu, click the signal icon in the upper right corner of the mobile data network switch to open, you can access the Internet.
Phone settings or features Abnormal use	Please open the settings - Backup and Reset - to restore the factory settings. To be fully tested whether the boot back to normal, such as the normal use, please contact the sales commissioner for processing. (Restoring the factory will result in the phone to clear all the data, please use this function after the safety backup)

CONQUEST



FCC RF Exposure Information and Statement

This device meets the government's requirements for exposure to radio waves. The guidelines are based on standards that were developed by independent scientific organizations through periodic and thorough evaluation of scientific studies. The standards include a substantial safety margin designed to assure the safety of all persons regardless of age or health. The SAR limit of USA (FCC) is 1.6 W/kg averaged. Device types: TD-LTE Smart Phone (FCC ID: 2AWTK-S12PRO) has also been tested against this SAR limit. SAR information on this and other pad can be viewed on - line at <http://www.fcc.gov/oet/ea/fccid/>. Please use the device FCC ID number for search. This device was tested simulation typical 10mm to body. To maintain compliance with FCC RF exposure requirements, use accessories should maintain a separation distance between the user's bodies mentioned above, the use of holsters and similar accessories should not contain metallic components in its assembly, the use of accessories that do not satisfy these requirements may not comply with FCC RF exposure requirements, and should be avoided.

FCC Warning

This device complies with Part 15 of the FCC Rules. Operation is subject to the following two conditions:

(1) This device may not cause harmful interference, and (2) This device must accept any interference received, including interference that may cause undesired operation.

NOTE 1: This equipment has been tested and found to comply with the limits for a Class B digital device, pursuant to part 15 of the FCC Rules. These limits are designed to provide reasonable protection against harmful interference in a residential installation. This equipment generates, uses and can radiate radio frequency energy and, if not installed and used in accordance with the instructions, may cause harmful interference to radio communications. However, there is no guarantee that interference will not occur in a particular installation. If this equipment does cause harmful interference to radio or television reception, which can be determined by turning the equipment off and on, the user is encouraged to try to correct the interference by one or more of the following measures:

- Reorient or relocate the receiving antenna.
- Increase the separation between the equipment and receiver.
- Connect the equipment into an outlet on a circuit different from that to which the receiver is connected.
- Consult the dealer or an experienced radio/TV technician for help.

NOTE 2: Any changes or modifications to this unit not expressly approved by the party responsible for compliance could void the user's authority to operate the equipment.