

# 深圳市安威无线科技有限公司

ANWEI communication Equipment Co.,Ltd

## 规格书

APPROVAL SHEET

客户 Customer	征服	规格型号 Specs	F5
安威料号 Part Number		频段 Frequency Band	2G:2/3/5/8 3G:1/2/4/5/8/BC0/BC1 4G:B1/2/3/4/5/7/8/12/13/17/18/19/20/25/26/ 28/38/40/41/66
颜色 Color	Black	版本 Edition	REV:A
销售 Salesperson	Mr.Lin	设计 Design	Lei Yao Bo
结构 Structure	QIN YUN LIN	确认 Confirm	
日期 Date	2023/4/6	签字日期 Signing Date	

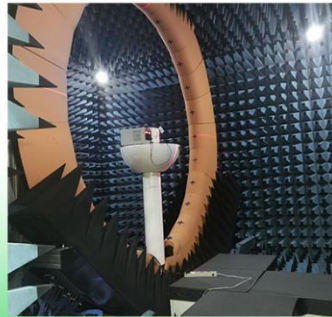
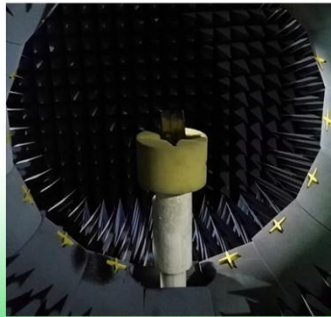
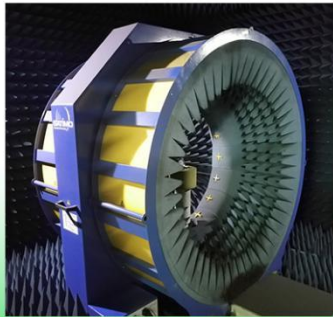
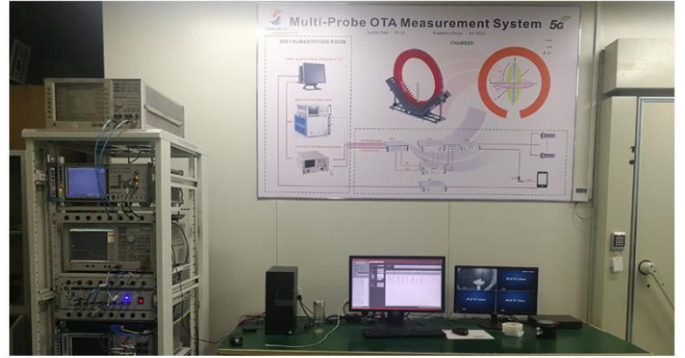
公司地址：深圳市龙华区大浪街道颐丰华工业园 5 栋 2 楼

携手共进 共创未来

Join hands to create the future

● 项目开发环境

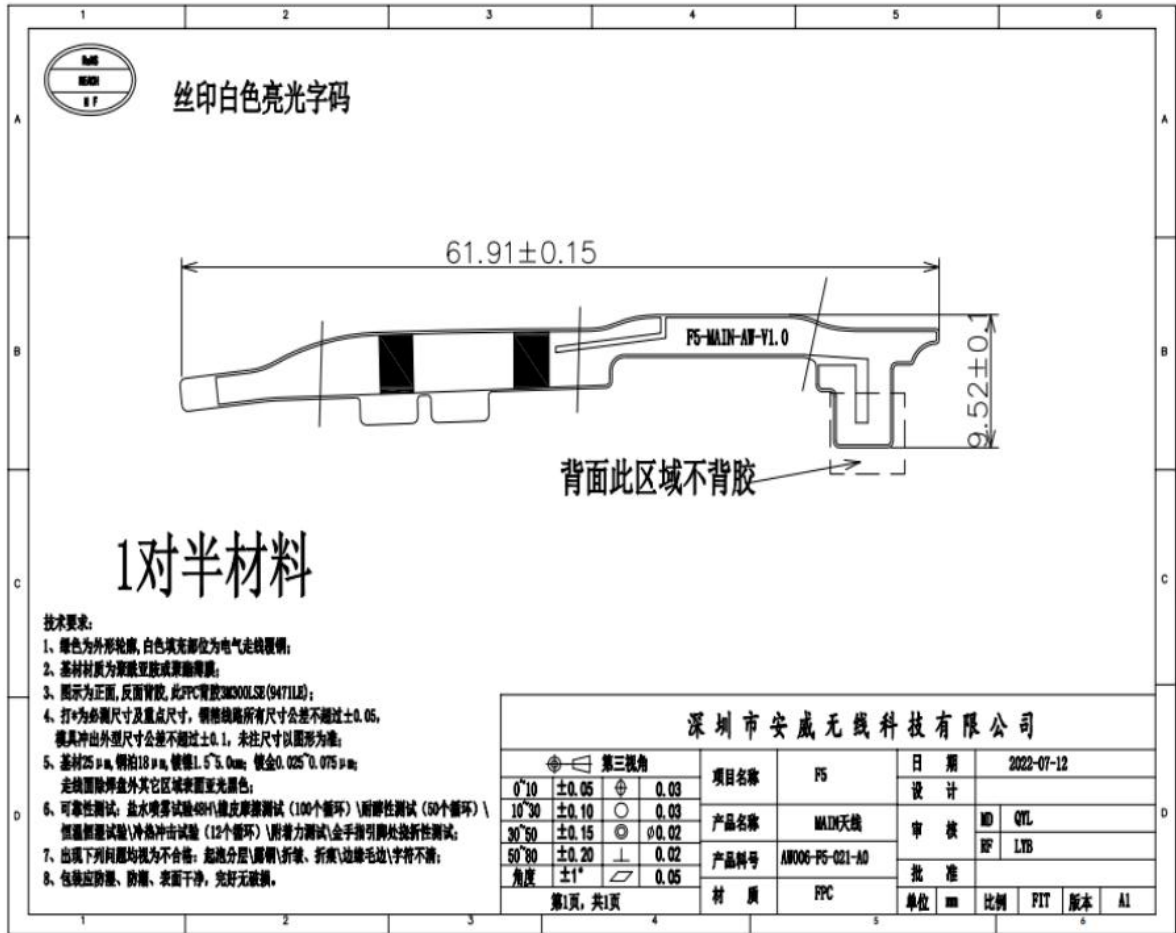
Project development environment



安威无线一直都是您值得信赖且优秀的合作伙伴，我们为您提供全方位一站式的产品以及技术服务！

“质量第一，服务至上”是安威一直以来的发展宗旨

### 主集天线 ((MIMO antenna 0))



工作频段(Working frequency band): 700MHZ~2690MHZ GSM850/900/1800/1900

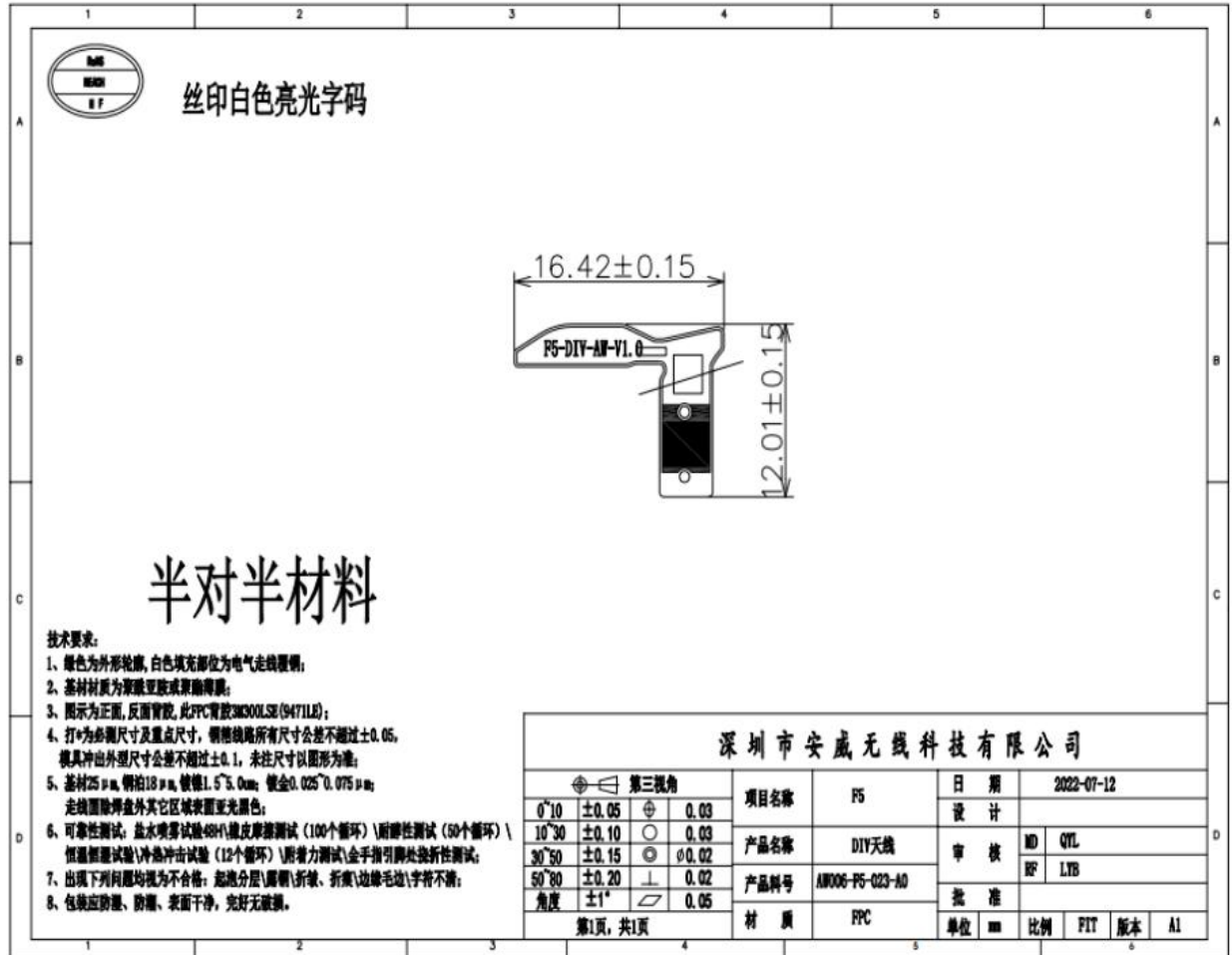
WCDMA 1/2/4/5/8 BC0/BC1

FDD1/2/3/4/5/7/8/12/13/17/18/19/20/25/26/28A/B/66 TDD38/40/41

## 分集天线(MIMO antenna 1)

工作频段(Working frequency band): 1700MHZ~2700MHZ

DCS1800/1900 W1/2/4 LTE 1/2/3/4/7/25/38/40/41/66

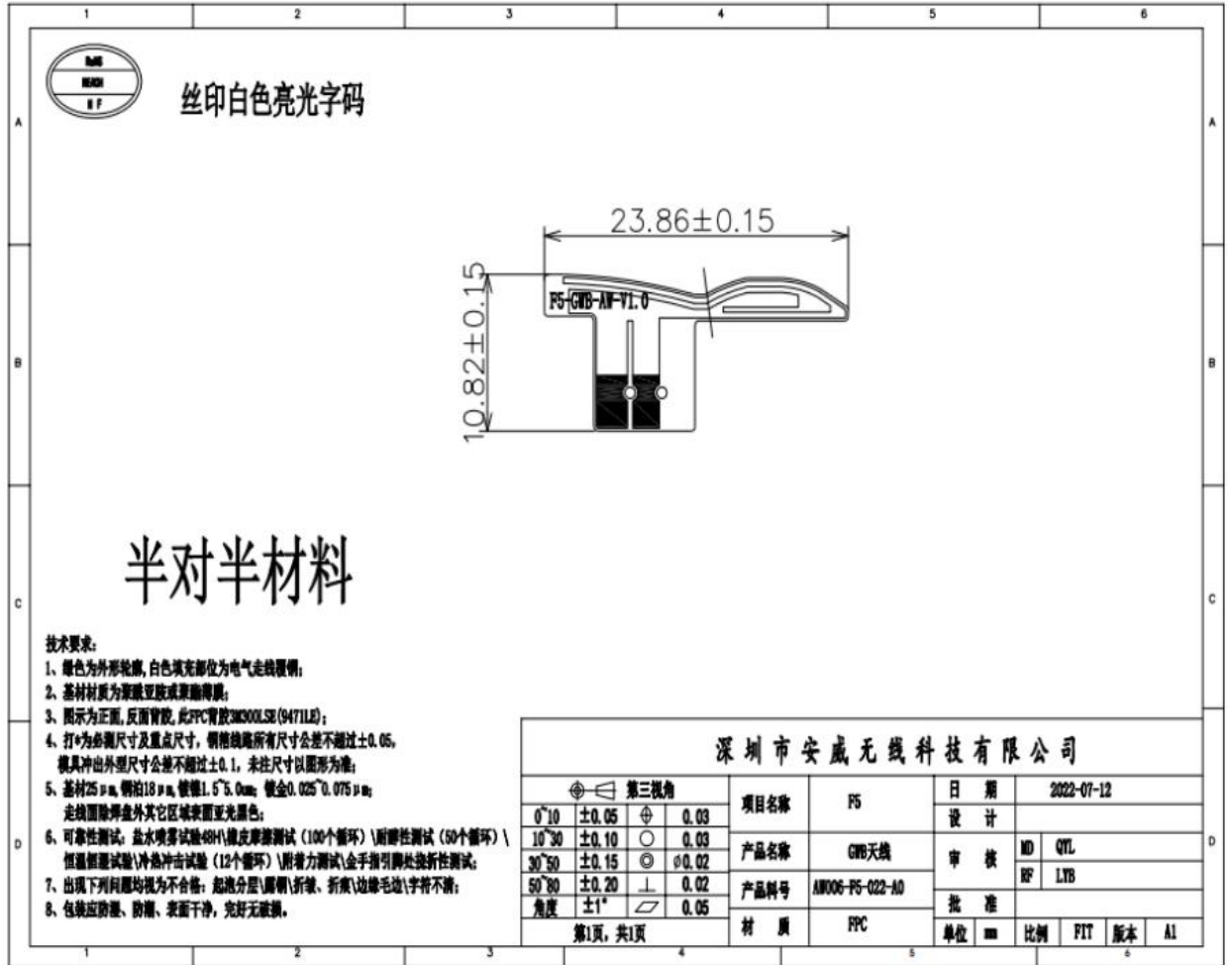


### BWG 天线 (BWG antenna)

GPS 天线工作频段 (Working frequency band of GPS antenna) : 1559MHZ~1616MHZ

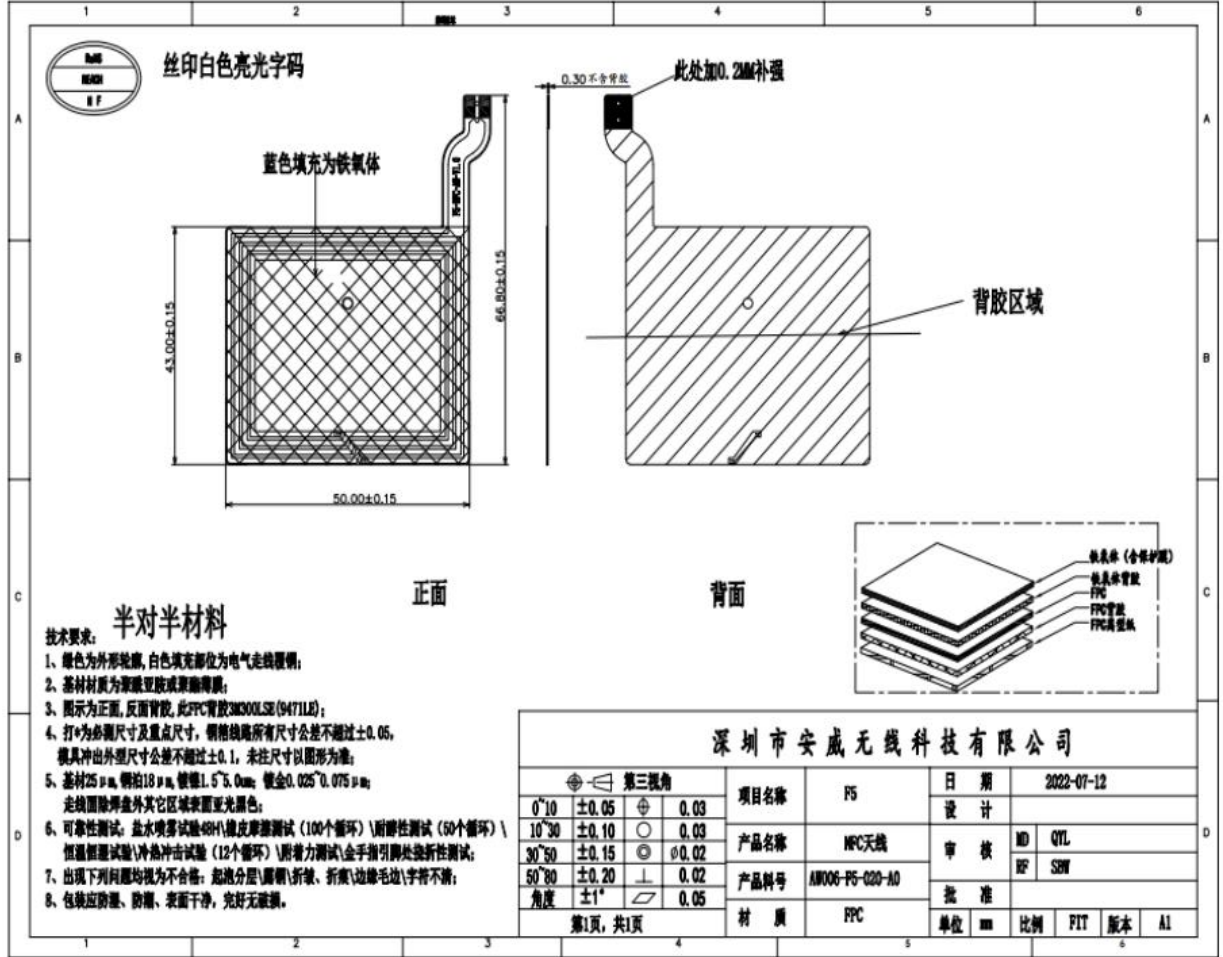
5GWIFI 工作频段 (Working frequency band of 5GWIFI antenna) : 5150MHZ~5850MH

**2.4GWIFI 天线 (2.4GWIFI antenna)** (Working frequency band of 5GWIFI antenna) : 2400MHZ~2500MH



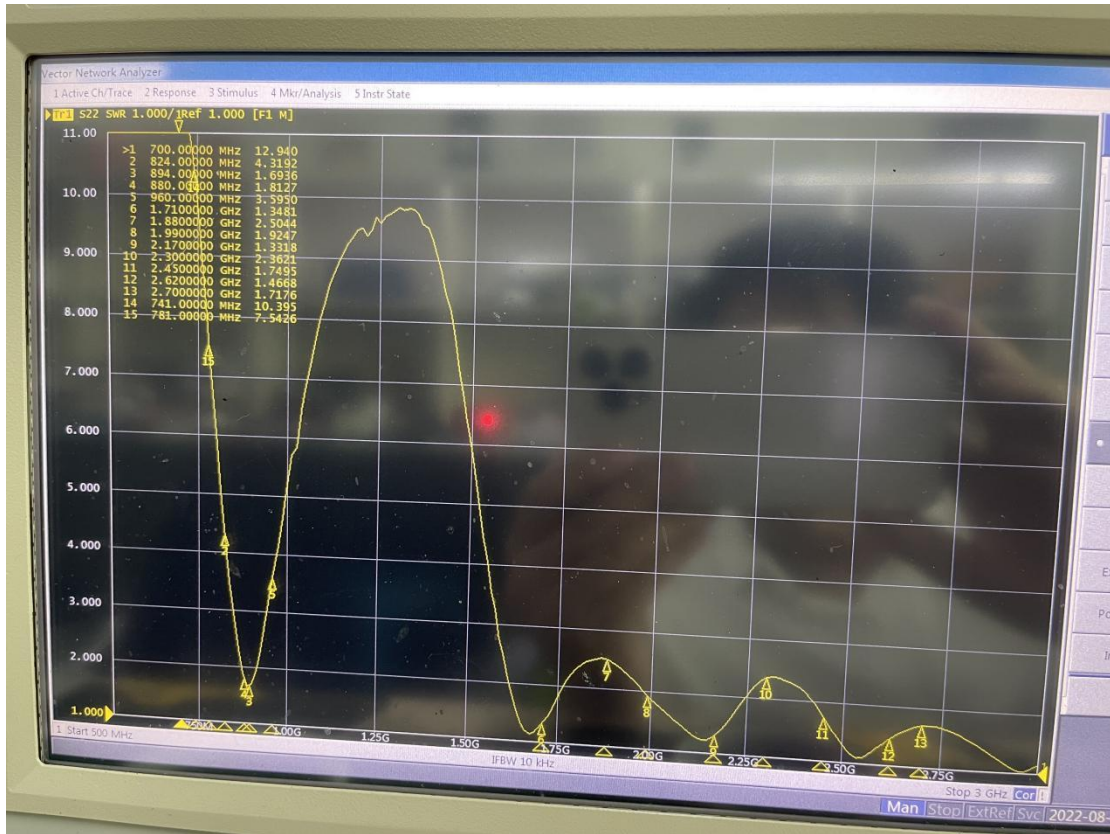
### NFC( antenna 1)

工作频段(Working frequency band): 13.56MHZ

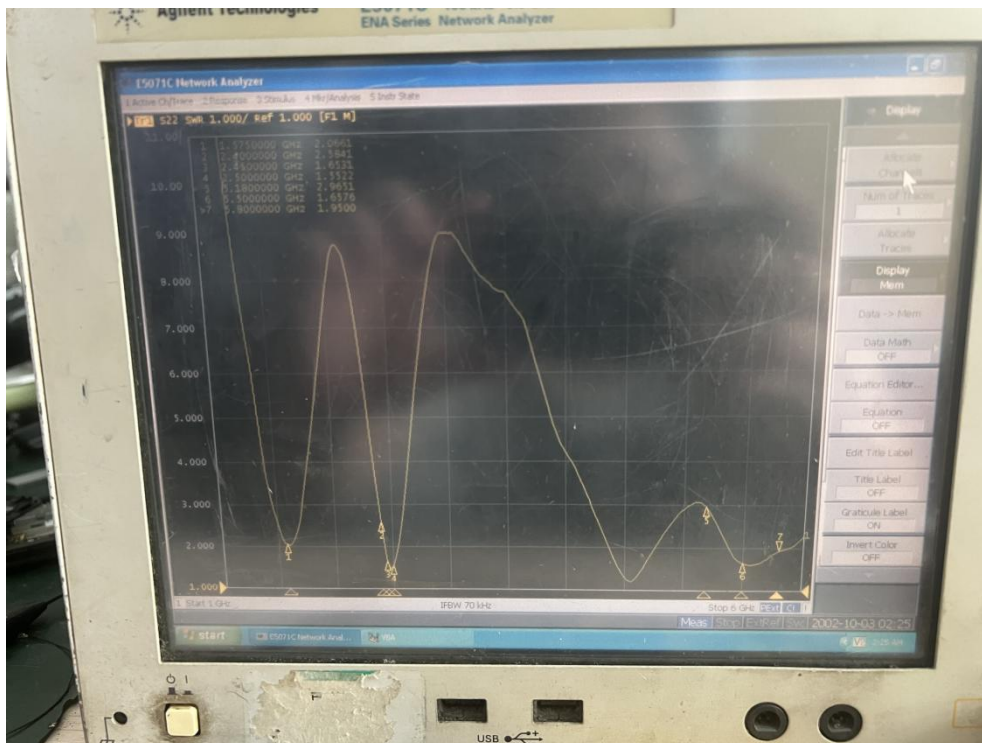




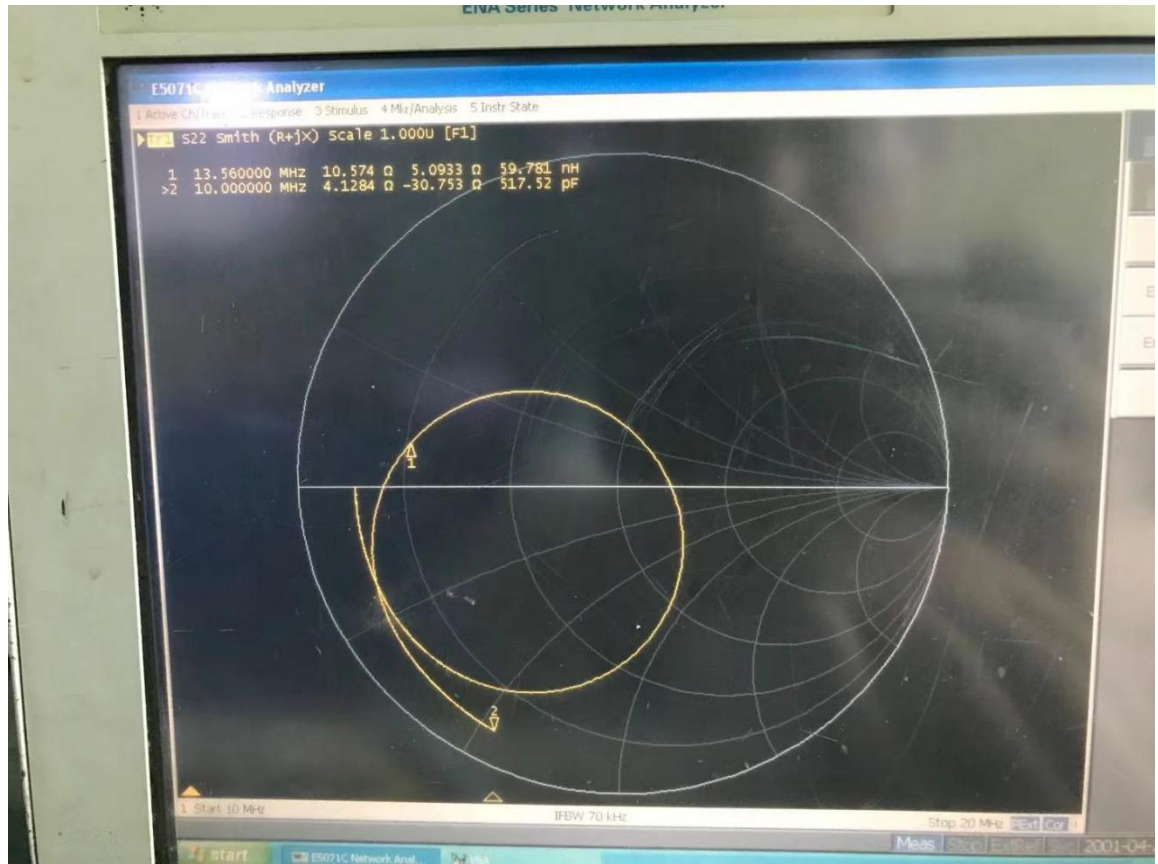
主天线驻波：（Main antenna VSWR）



BWG 驻波：（BWG antenna VSWR）



NFC antenna VSWR





**ANWEI ANT TRP&TIS parameter Summary of F5**

	Channel	TRP (dBm)	TIS (dBm)		Channel	TRP (dBm)	TIS (dBm)		Channel	TRP (dBm)	TIS (dBm)
FDD B1	18050	18.08		FDD B13	23230	16.11	-89.3	FDD B28B	27410	15.26	
	18300	18.94							27510	15.01	
	18550	18.48	-90.7						27600	15.14	-89.5
FDD B2	18650	17.9		FDD B17	23790	16.13		FDD B66	132022	15.23	
	18900	17.7							132322	15.38	
	19150	18.62	-92.3						132622	15.44	
FDD B3	19250	15.49		FDD B18	23900	15.09		TDD (B38)	37850	18.41	
	19575	16.18							38000	18.47	
	19900	17.29	-88.0						38150	18.65	-89.3
FDD B4	20000	15.31		FDD B19	24050	15.62		TDD (B40)	38750	17.66	
	20175	15.34	-91.3						39150	17.34	
	20350	15.23							39550	17.74	-89.29
FDD B5	20450	15.78		FDD B20	24100	15.72	-90.6	TDD (B41)	40340		
	20525	16.5							40620	18.32	-89.7
	20600	17.04	-90.2						41140		
FDD B7	20800	17.46		FDD B25	24200	17.21		CDMA BC0	1013	15.71	
	21100	17.91							384	16.13	
	21400	18.4	-91.4						777	16.6	-98.2
FDD B8	21500	16.46		FDD B26	26090	17.43		CDMA BC1	777	18.8	
	21625	16.66							25	19.19	
	21750	16.89	-88.6						600	19.45	-105.6
FDD B12	23060	15.35		FDD B28A	26640	19.64	-92.2				
	23095	15.12									
	23130	15.39	-90.0								
					26740	15.1					
					26865	15.6					
					26990	16.77	-90.2				
					27260	16.32					
					27370	15.44					
					27469	15.09	-89.3				

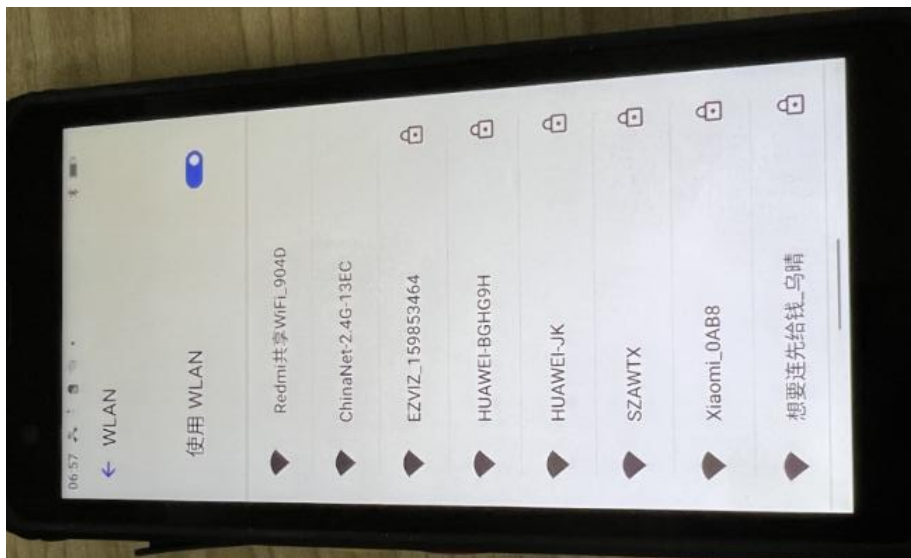
	Channel	TRP (dBm)	TIS (dBm)		Channel	TRP (dBm)	TIS (dBm)		Channel	TRP (dBm)	TIS (dBm)	
WCDMA B1	10562	19.59		GSM 850	128	25.66						
	10700	18.23				190	25.73					
	10838	17.86	-105.5			251	26.12		-102.0			
WCDMA B2	9262	17.48		GSM 900	1	26.38						
	9400	18.24				62	25.96					
	9538	19.57	-106.71			124	25.92		-102.3			
WCDMA B4	1312	15.4		DCS1800	512	22.01						
	1413	15.14				698	22.76					
	1513	15.39	-104.19			885	23.2		-104.52			
WCDMA B5	4132	15.98		PCS 1900	512	23.88						
	4183	16.55				661	24.91					
	4233	16.96	-102.57			810	25.71		-104.85			
WCDMA B8	2712	16.04										
	2787	16.3										
	2863	16.09	-101.8									
WCDMA B6	4162	16.2										
	4175	16.5										
	4188	16.4	-104.4									

### GPS 测试(GPS Test)



基本稳定 2 颗 40 以上

### WIFI Test



## 天线增益(Antenna gain)

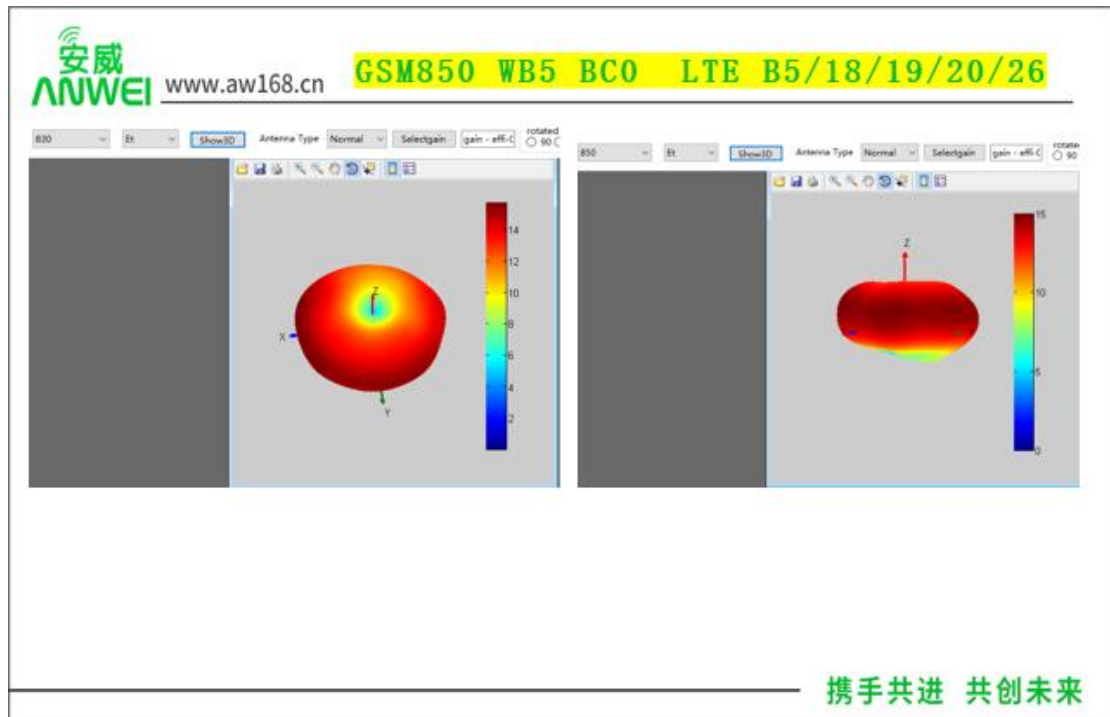
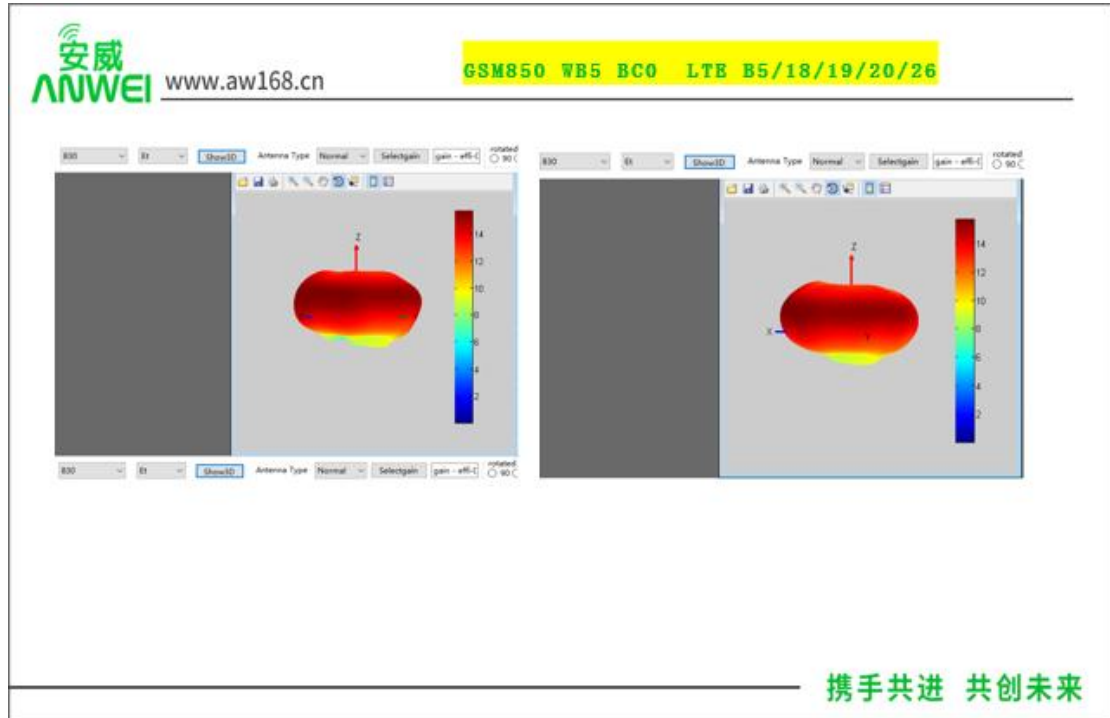
Standard	Band	Frequency	Gain(dbi)
TDD_LTE	TDD_B38	2580	1.38
TDD_LTE	TDD_B40	2310	1.31
TDD_LTE	TDD_B41	2593	1.42
FDD_LTE	FDD_B1	1925	0.8
FDD_LTE	FDD_B2	1855	0.76
FDD_LTE	FDD_B3	1715	0.37
FDD_LTE	FDD_B4	1715	0.38
FDD_LTE	FDD_B5	829	-1.36
FDD_LTE	FDD_B7	2505	1.37
FDD_LTE	FDD_B8	885	-0.86
FDD_LTE	FDD_B12	707	-1.74
FDD_LTE	FDD_B13	782	-1.68
FDD_LTE	FDD_B17	709	-1.74
FDD_LTE	FDD_B18	822	-1.35
FDD_LTE	FDD_B19	835	-1.28
FDD_LTE	FDD_B20	837	-1.19
FDD_LTE	FDD_B25	837	0.4
FDD_LTE	FDD_B26	837	-1.18
FDD_LTE	FDD_B28	708	-1.73
FDD_LTE	FDD_B28	723	-1.70
FDD_LTE	FDD_B66	1715	0.38
BC0		833	-1.36
BC1		1880	0.55
WCDMA	WCDMA_B1	1922.4	0.79
WCDMA	WCDMA_B2	1852.4	0.54
WCDMA	WCDMA_B4	1715	0.38
WCDMA	WCDMA_B5	826.4	-1.36
WCDMA	WCDMA_B8	882.4	-0.85

GSM	GSM850	824.2	-1.36
GSM	GSM900	890.2	-0.85
GSM	PCS1900	1850.2	0.54
GSM	DCS1800	1710.2	0.37
2.4GWIFI		2412	1.89
5GWIFI		5825	0.54
GPS		1575	1.68
BT		2400	1.89

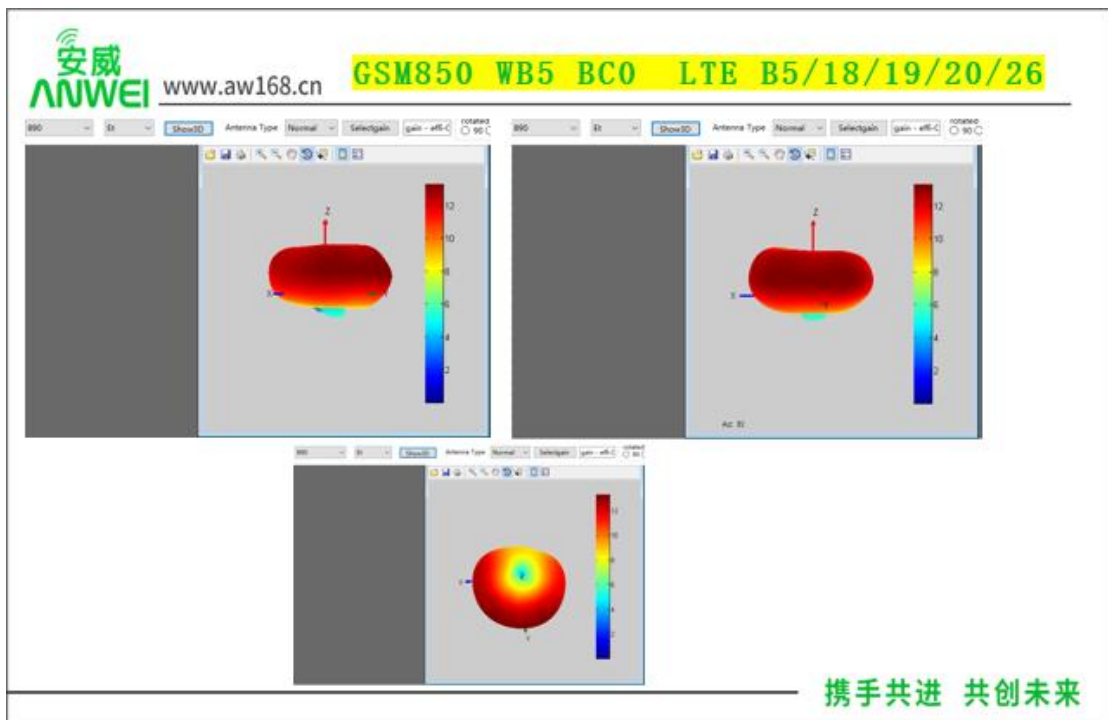
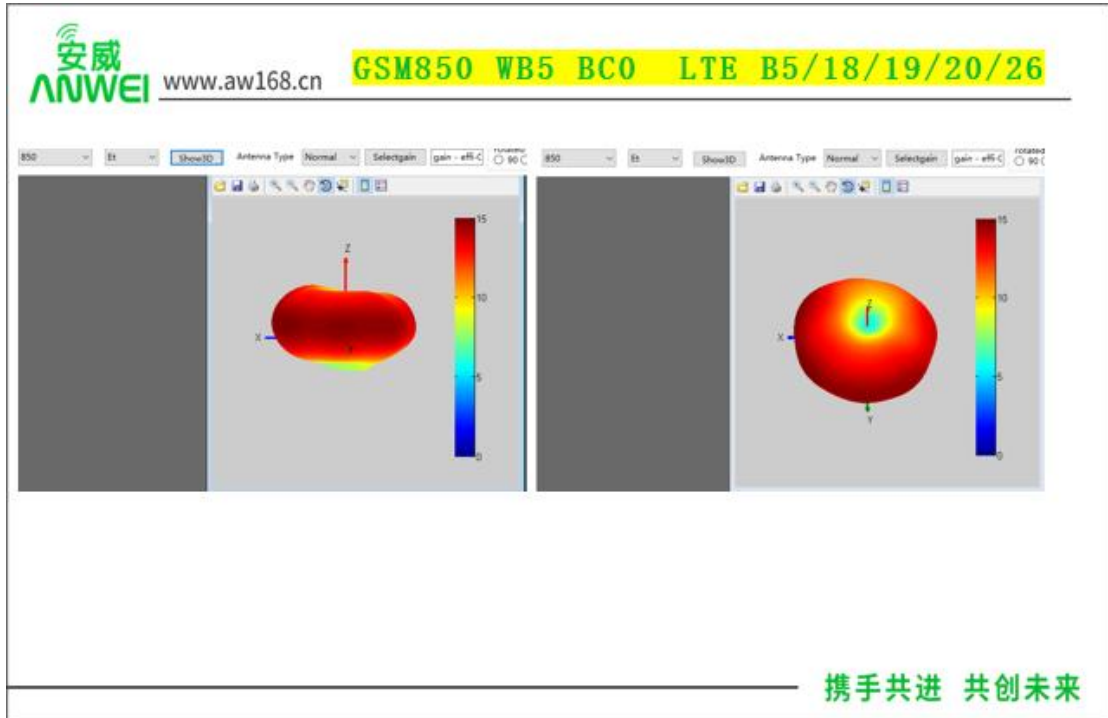
环境处理方式(Environmental treatment)

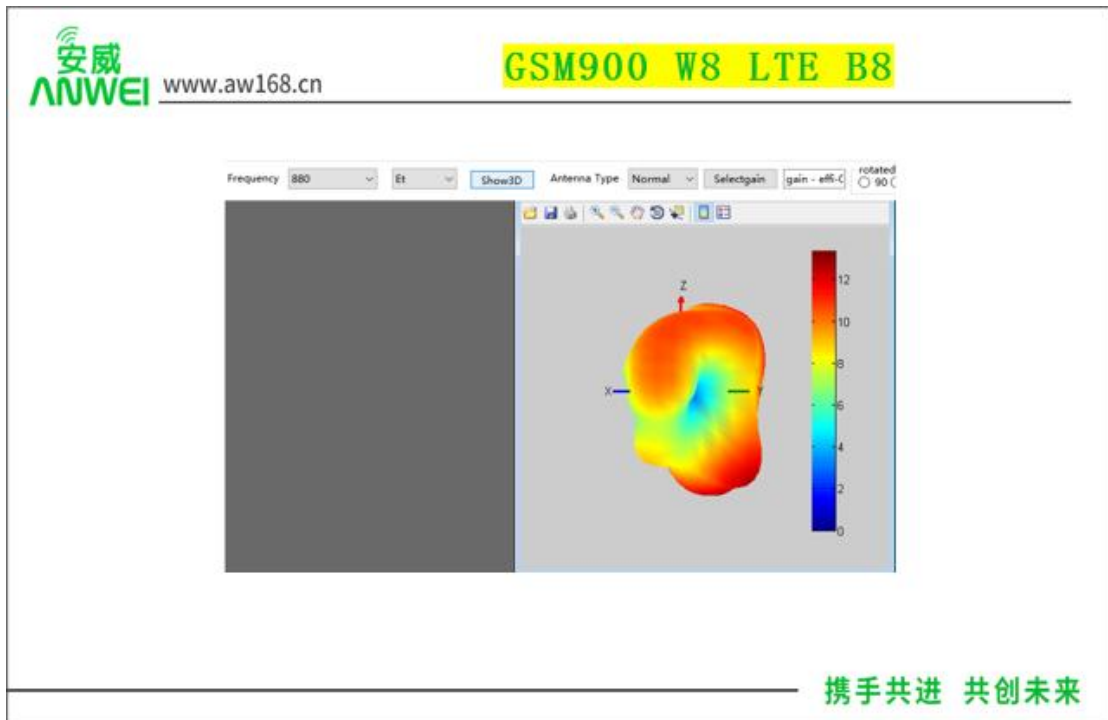
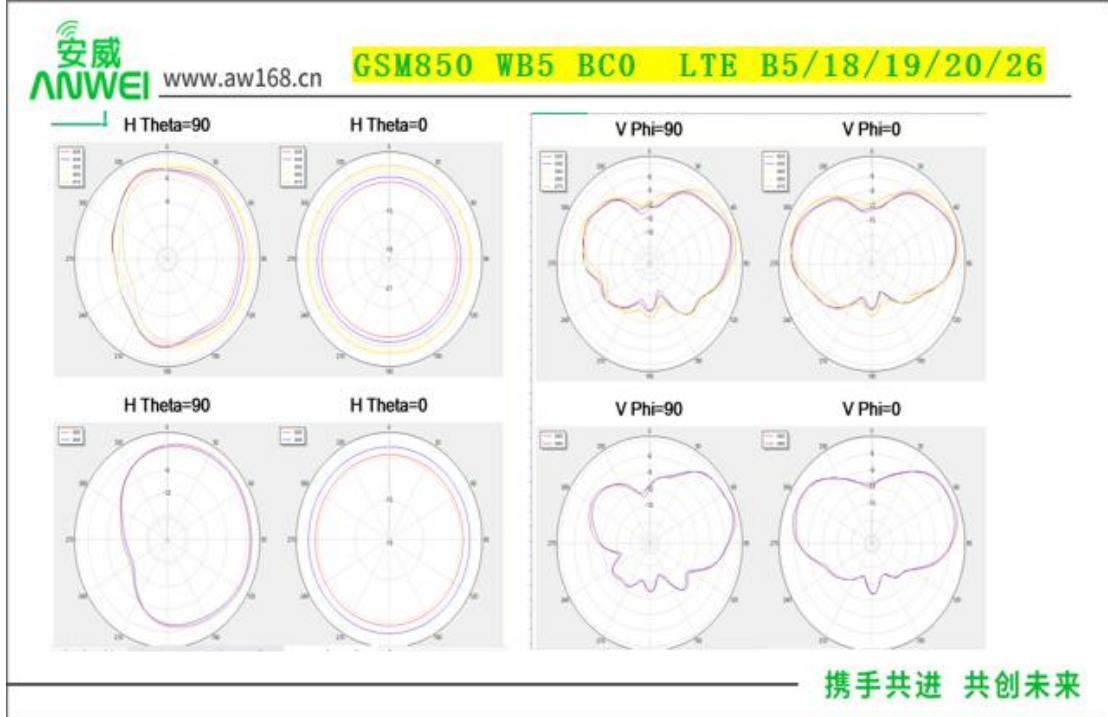
Customer installation  
environment

# 苹果图与方向图：（Apple charts and directional charts）

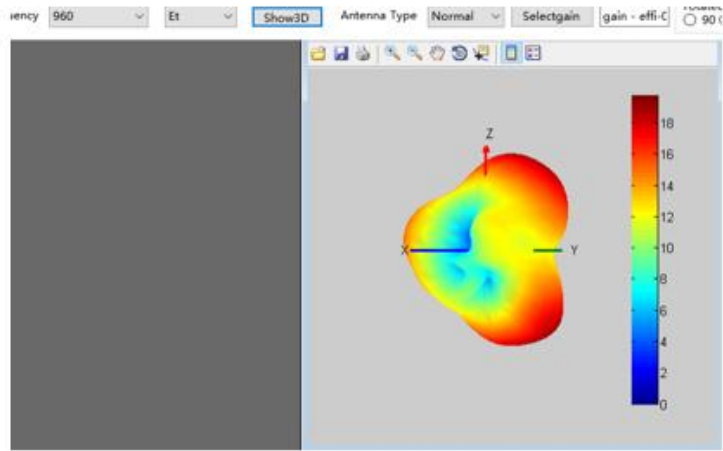






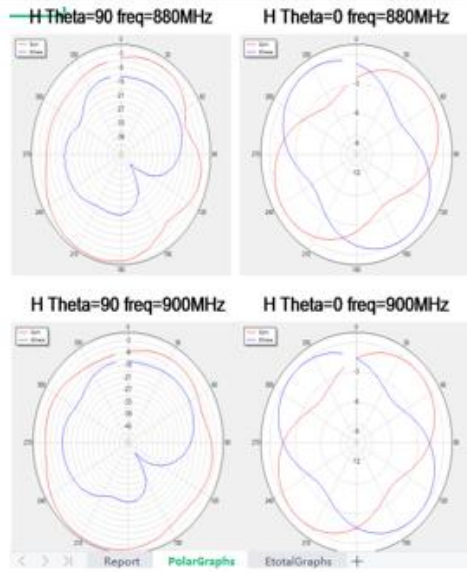


GSM900 W8 LTE B8

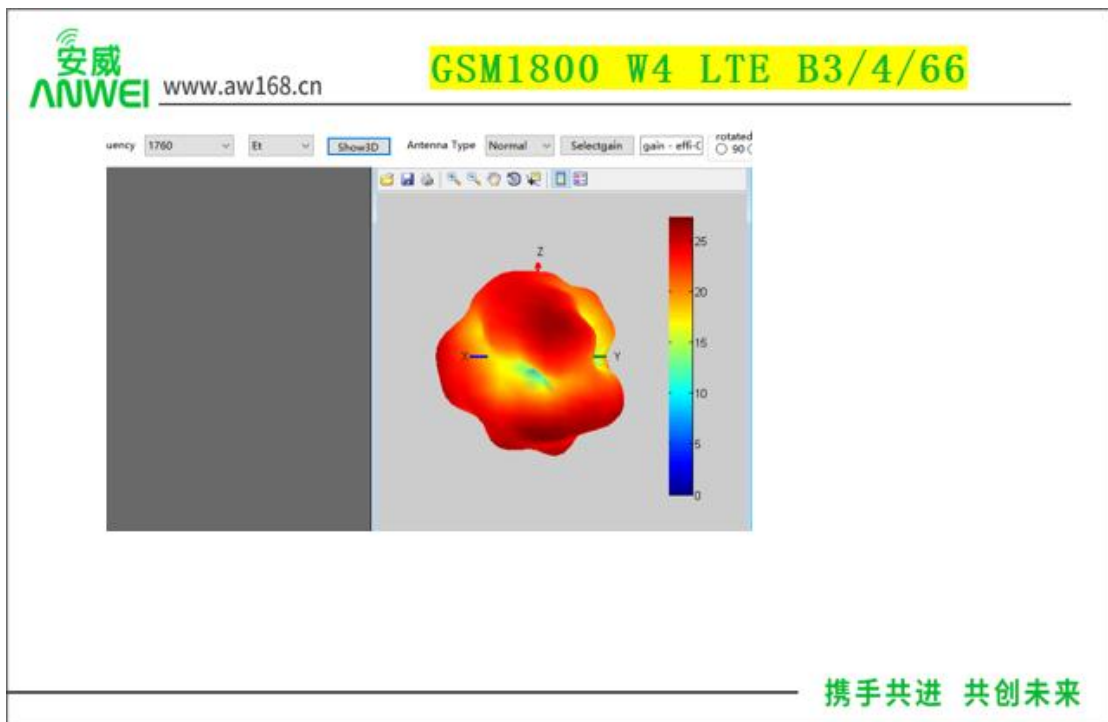
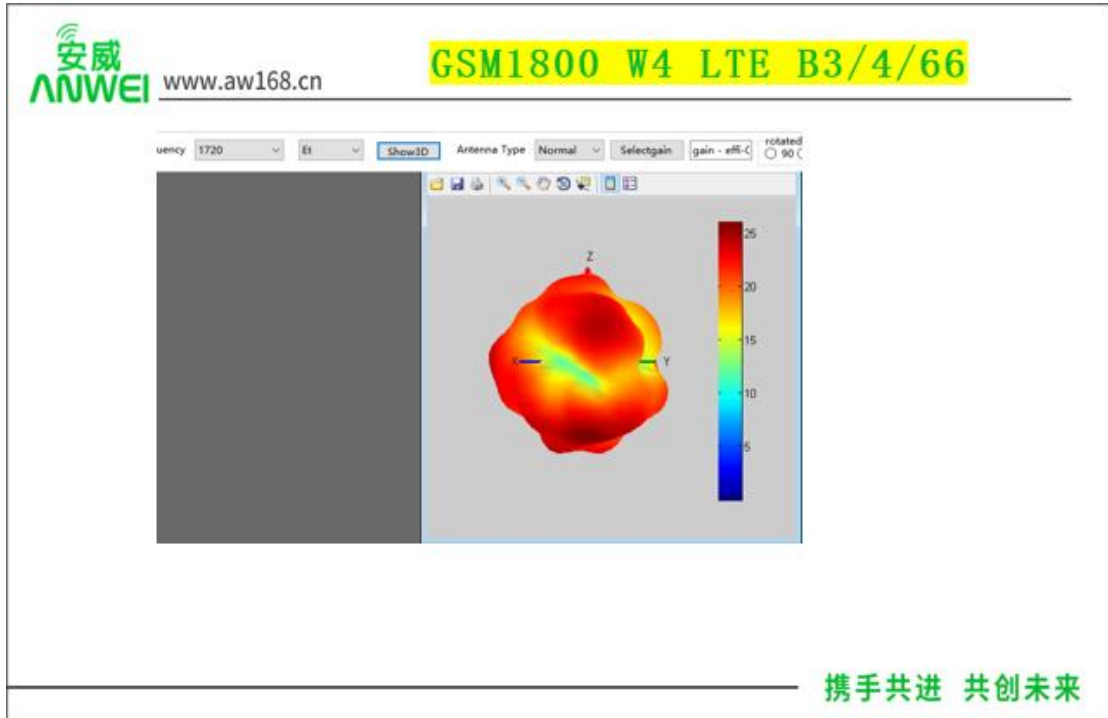


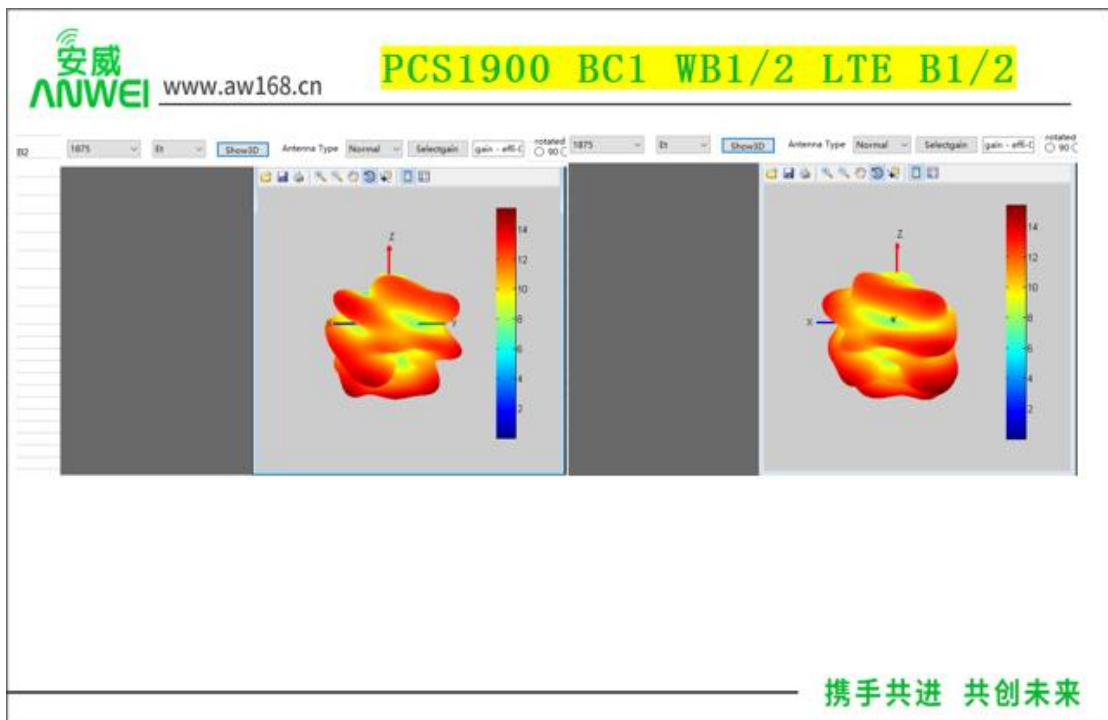
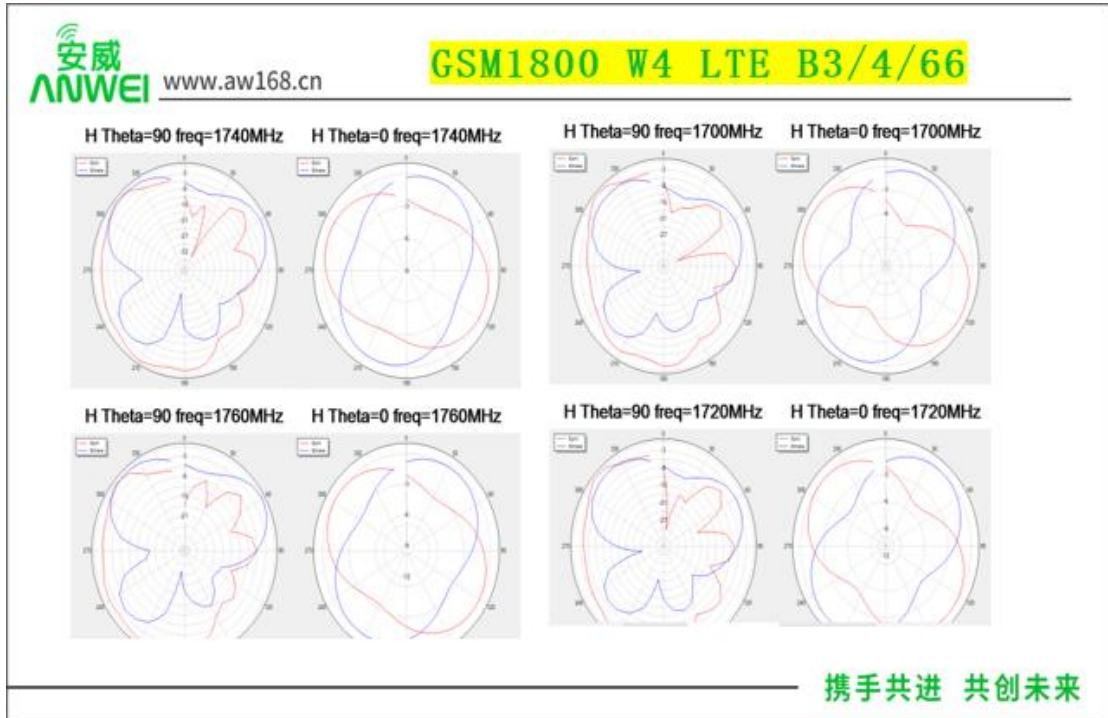
携手共进 共创未来

GSM900 W8 LTE B8

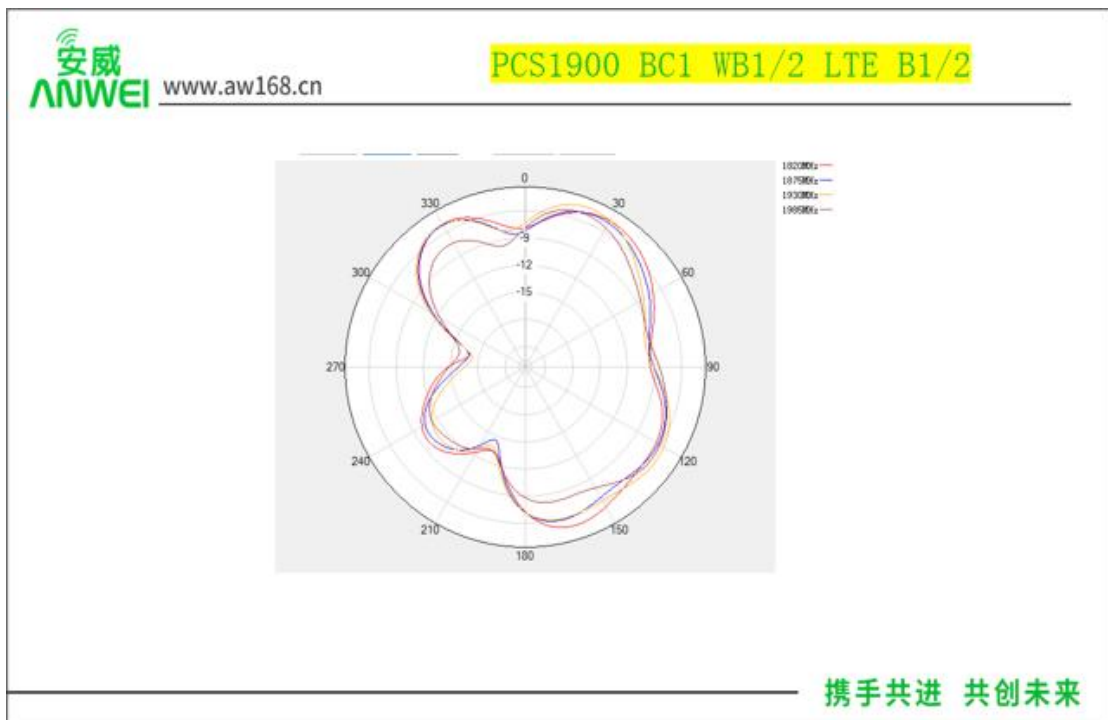
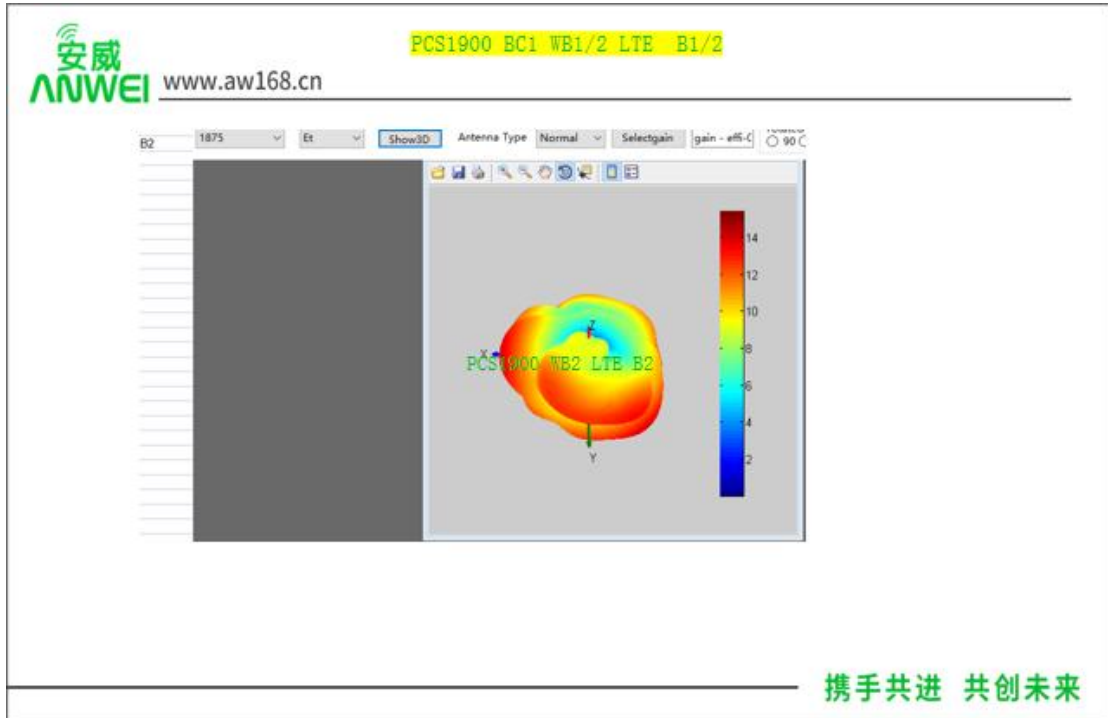


携手共进 共创未来

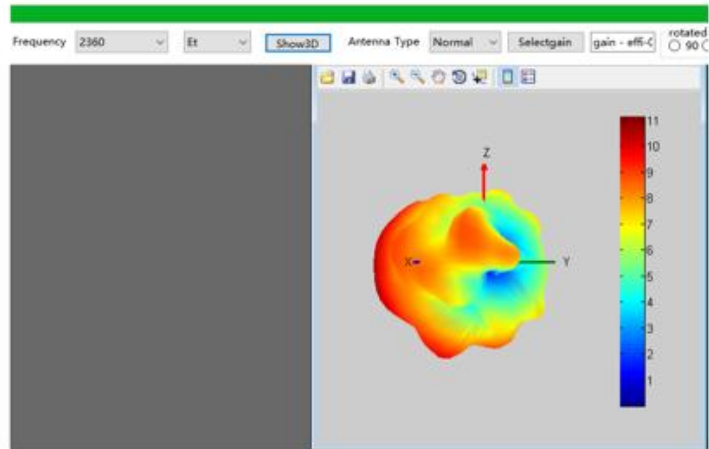






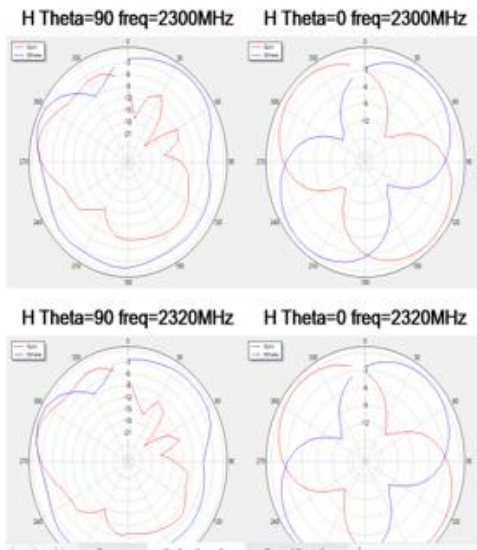


LTE B40

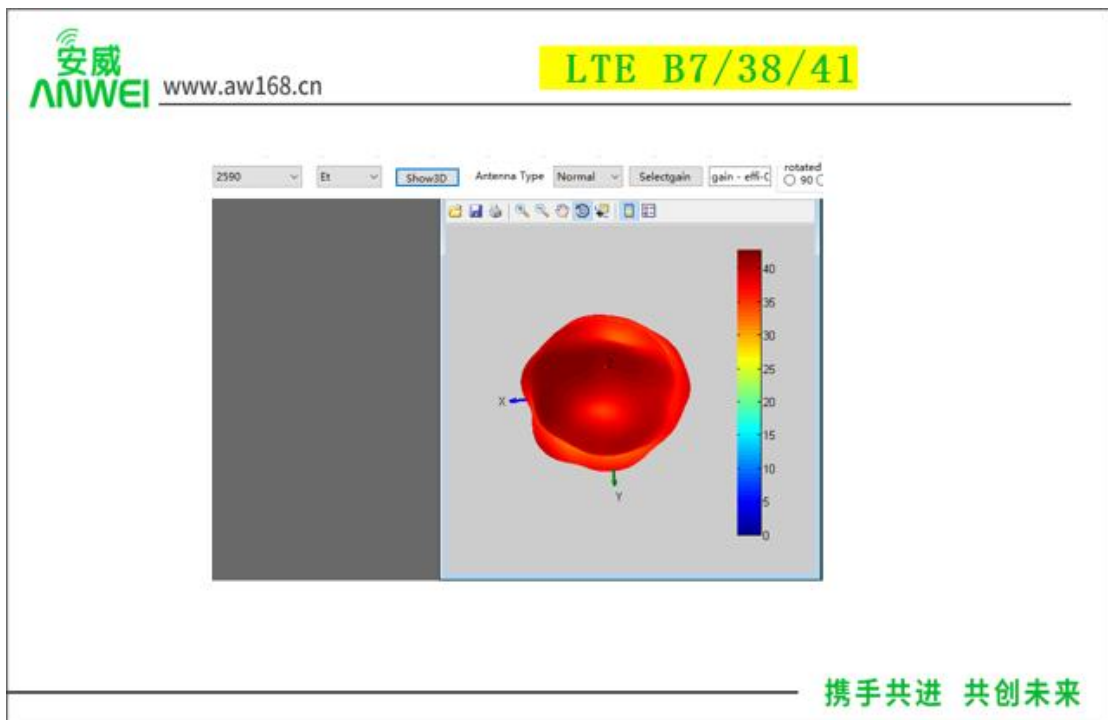
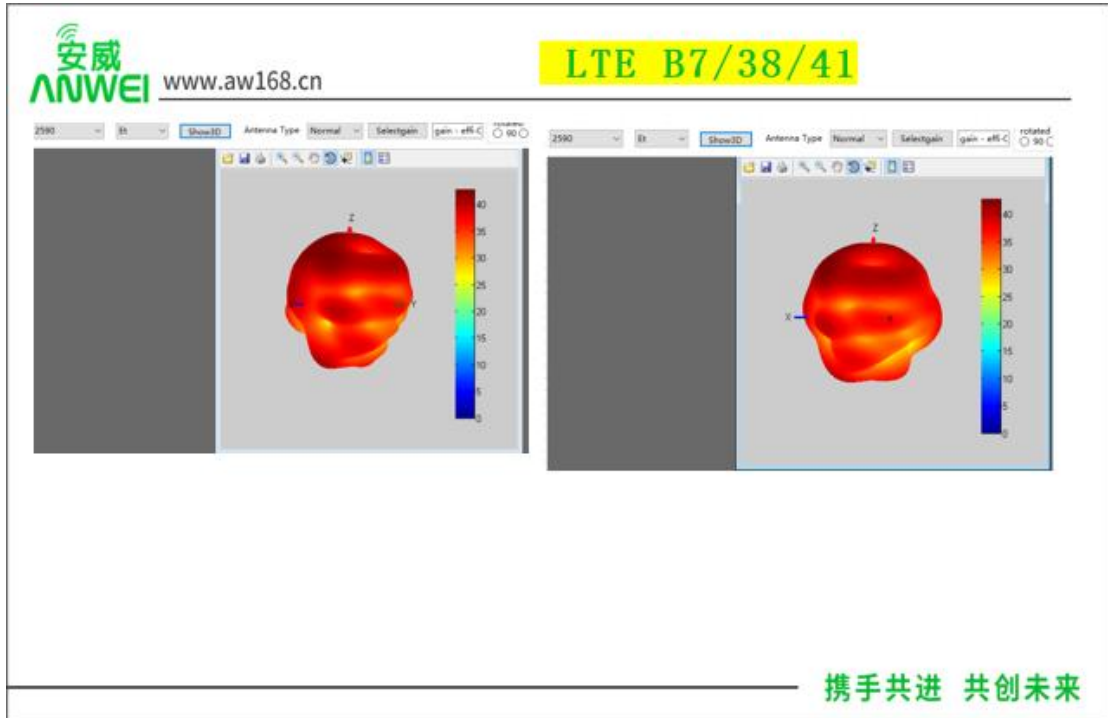


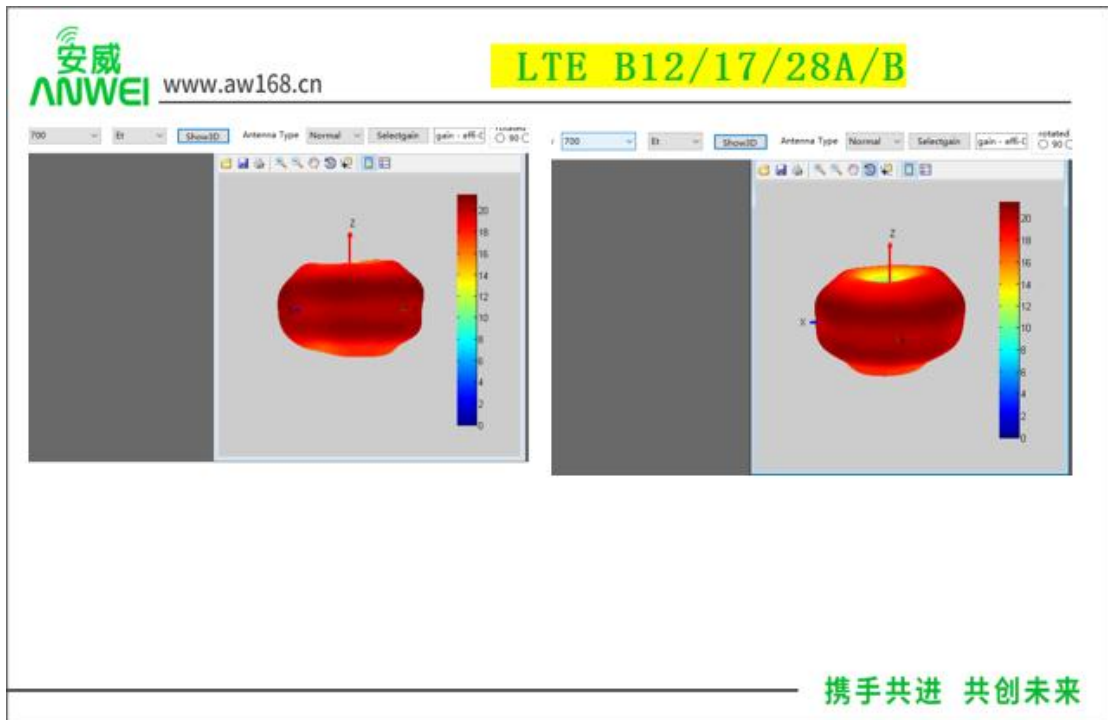
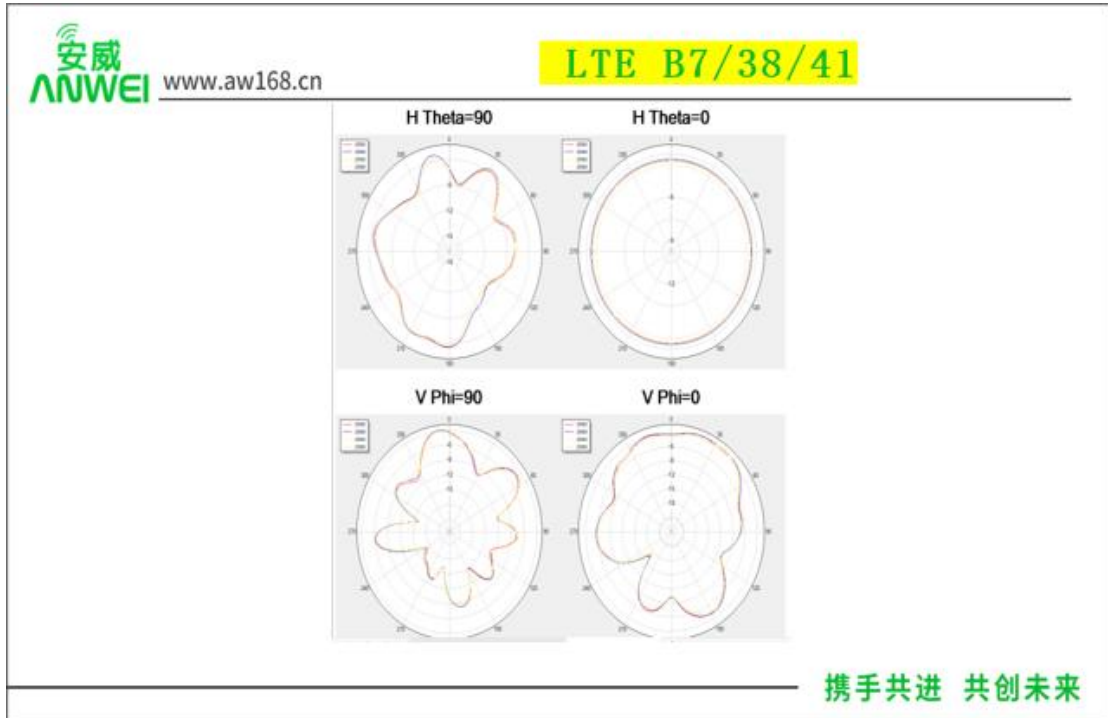
携手共进 共创未来

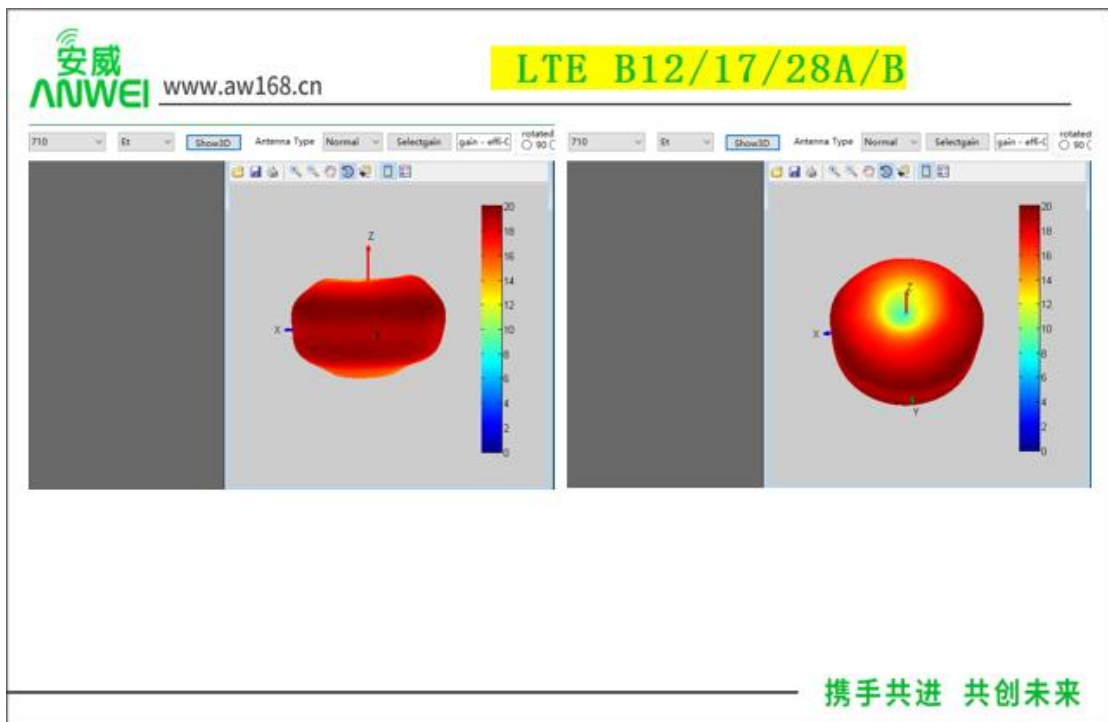
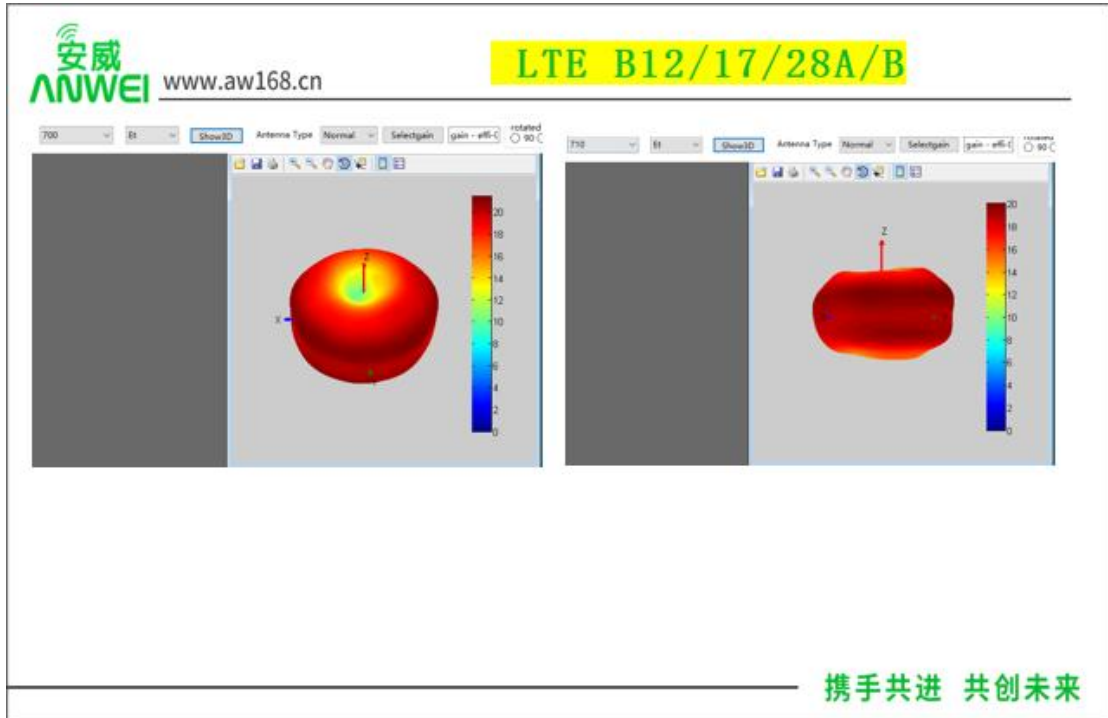
LTE B40



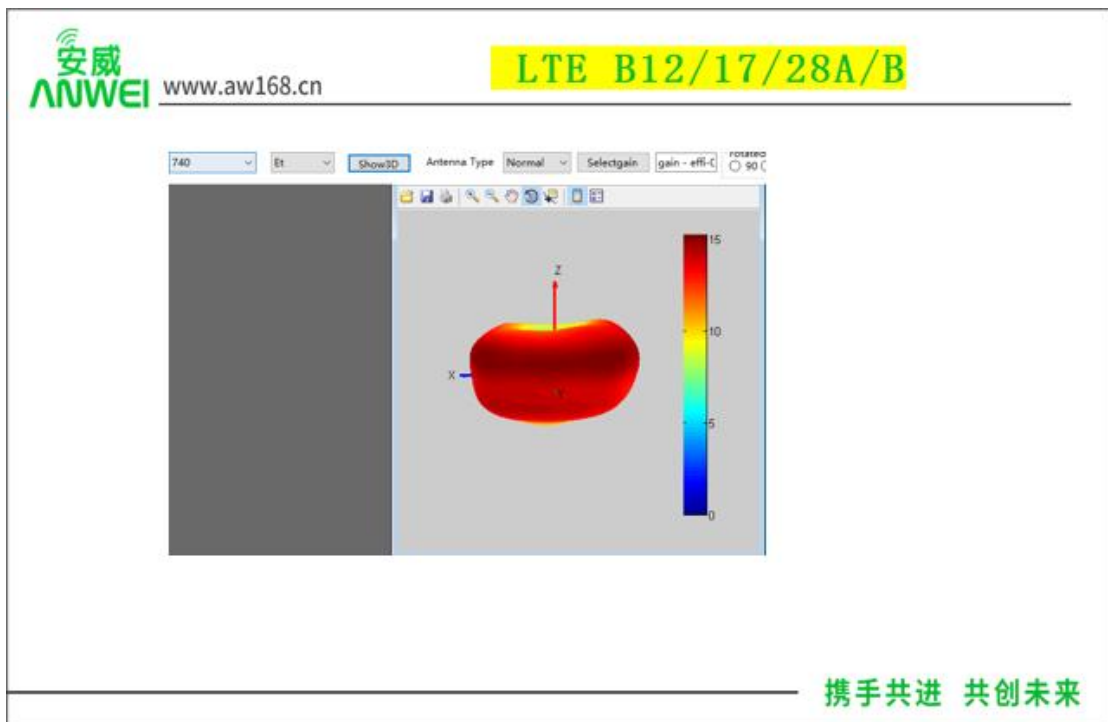
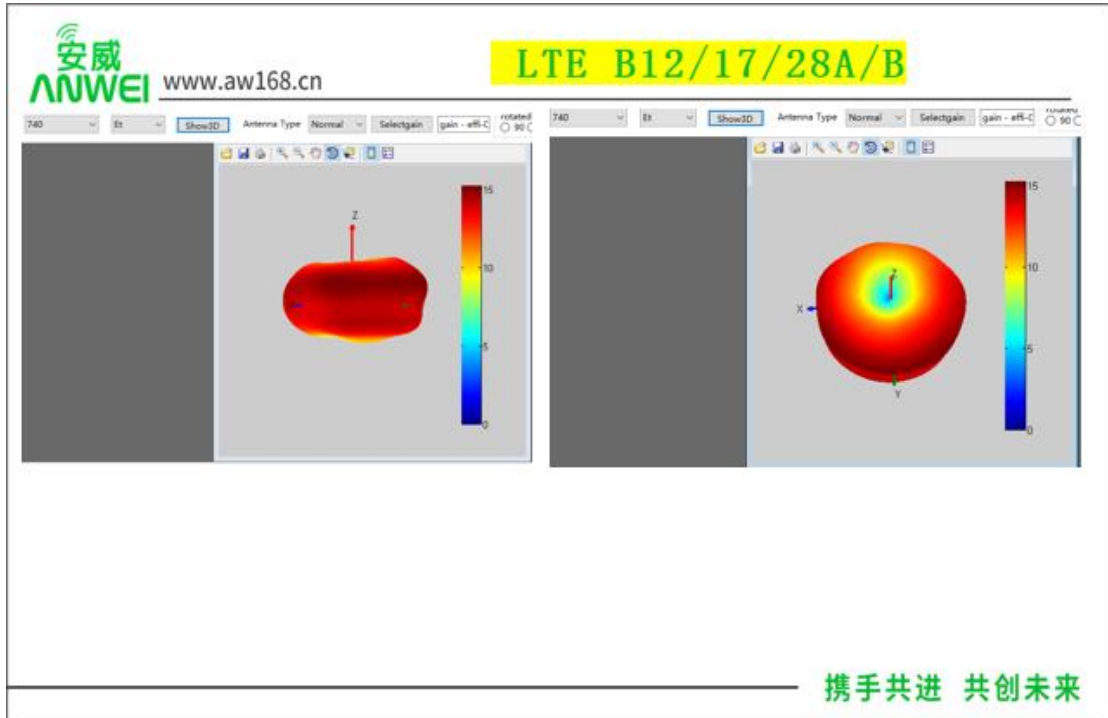
携手共进 共创未来

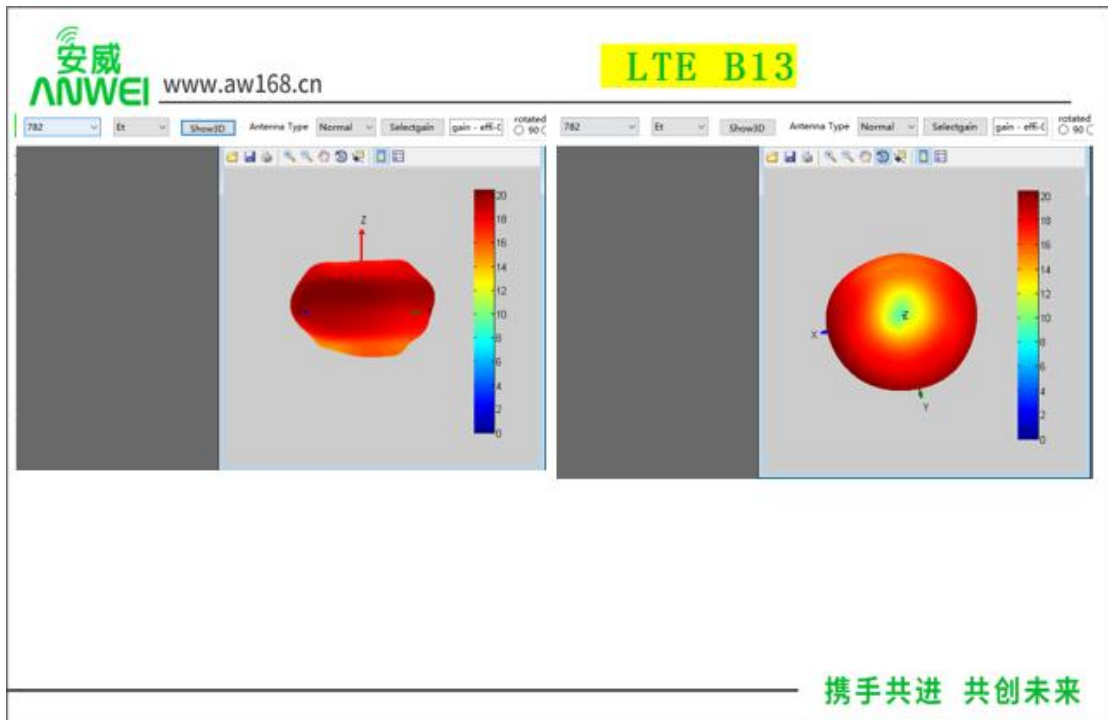
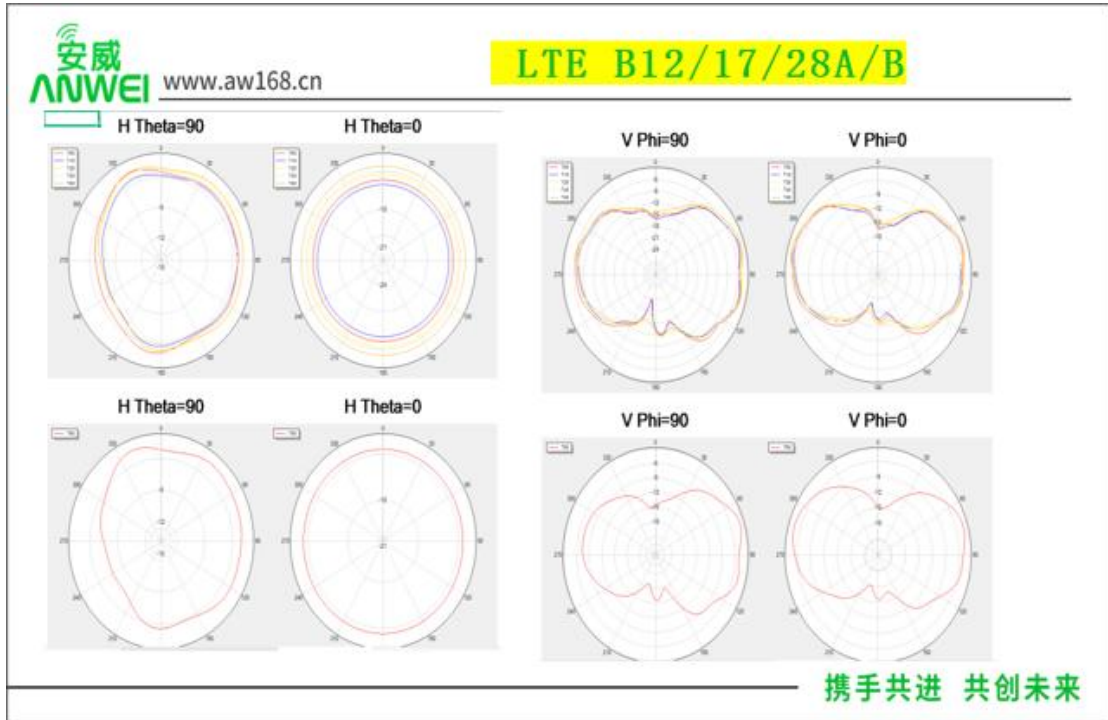




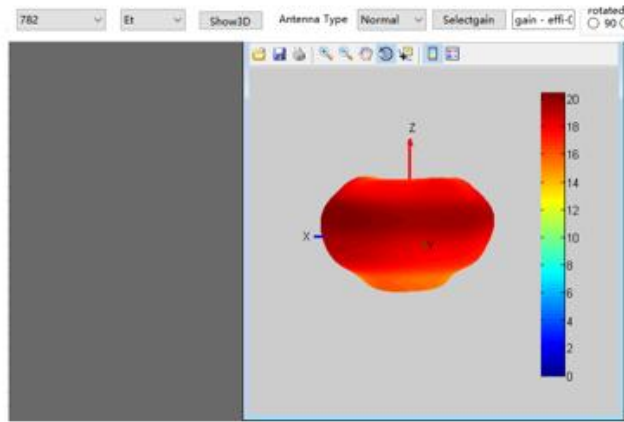






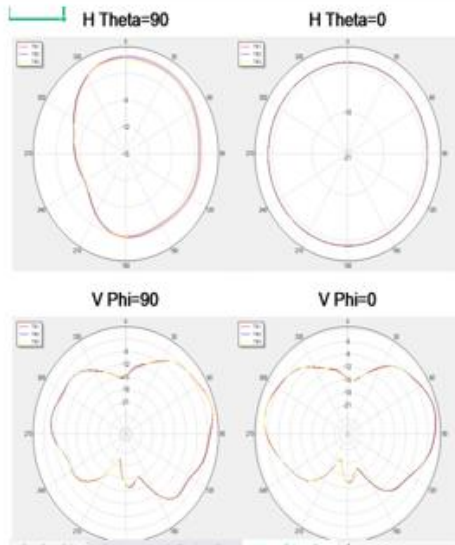


LTE B13

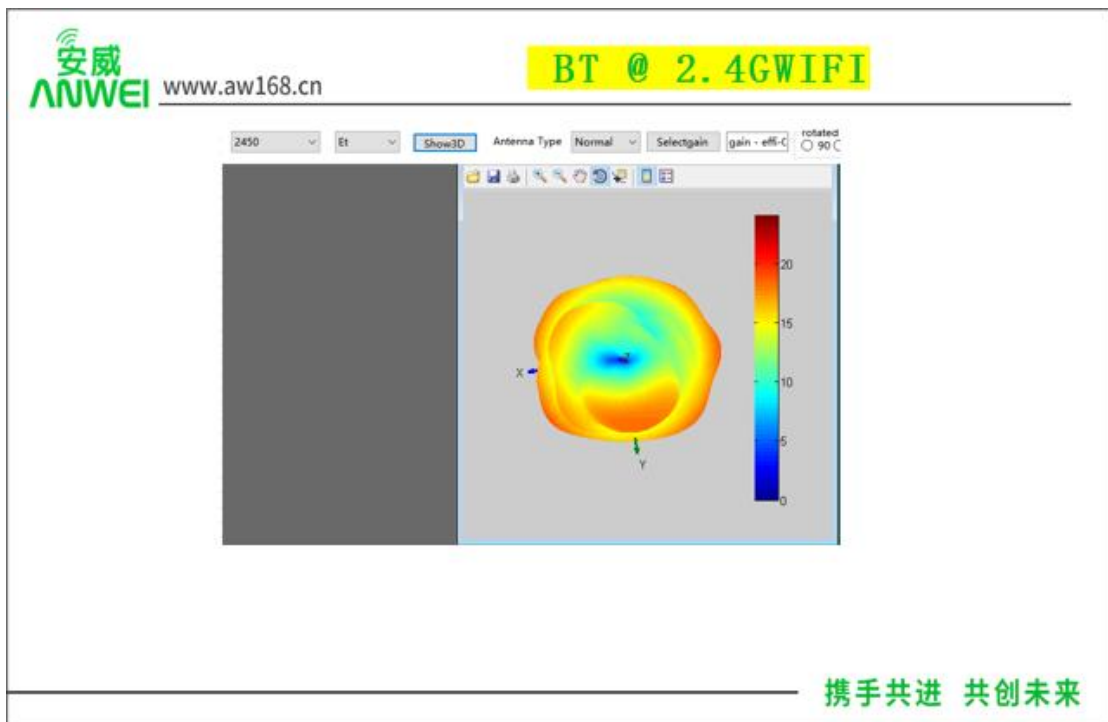
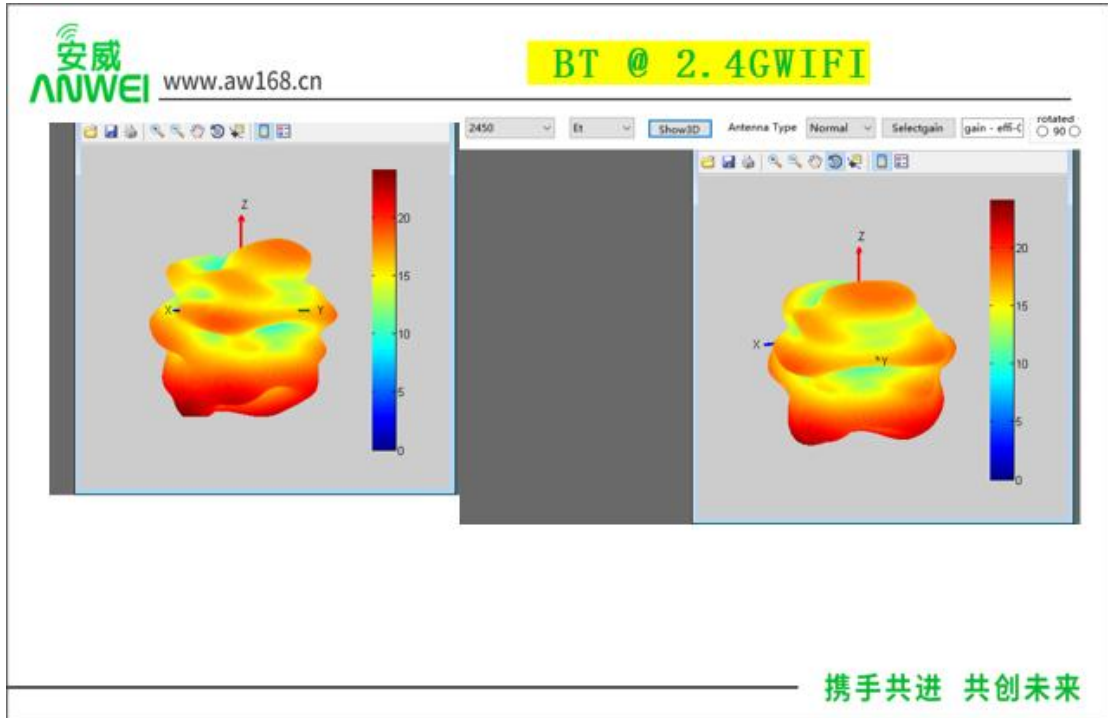


携手共进 共创未来

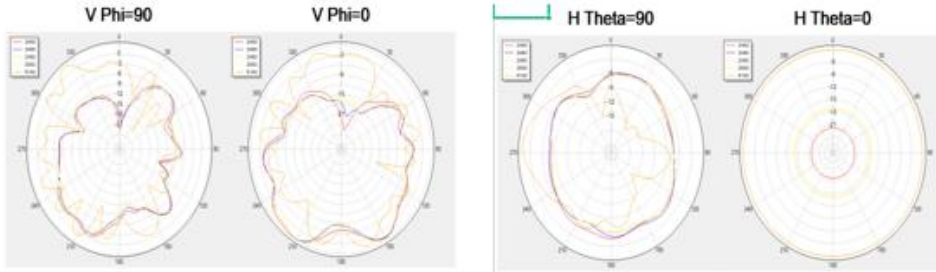
LTE B13



携手共进 共创未来

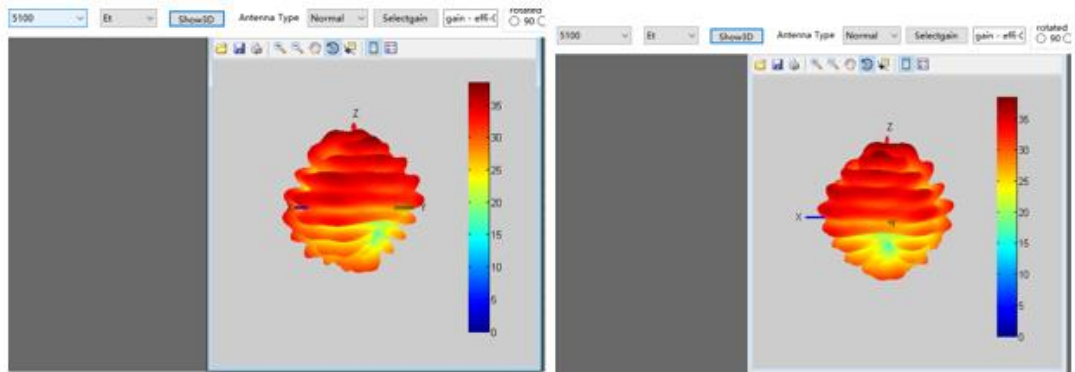


BT @ 2.4GWIFI



携手共进 共创未来

5GWIFI



携手共进 共创未来



