

Internal Photos of the EUT

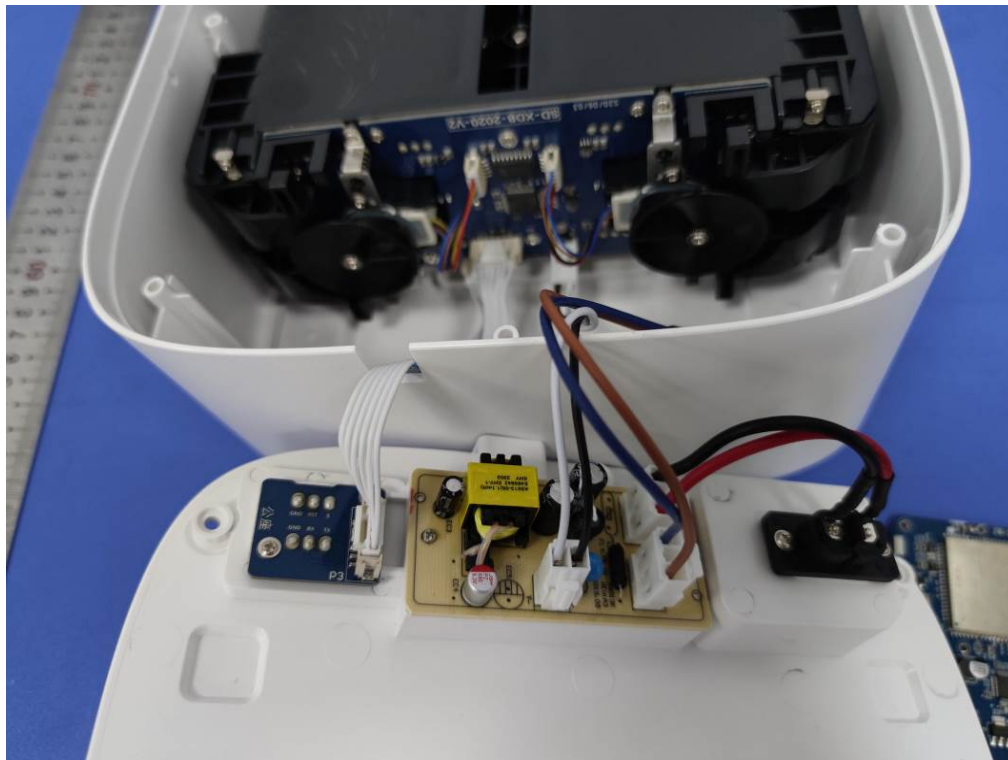


Fig.1

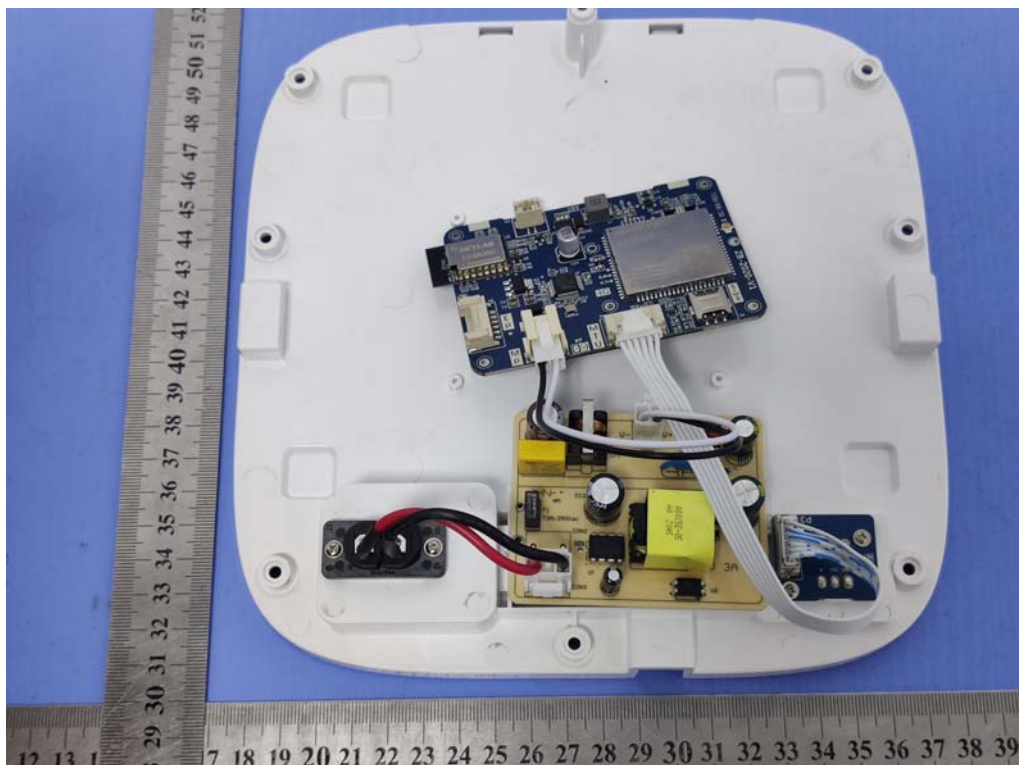


Fig.2



Fig.3

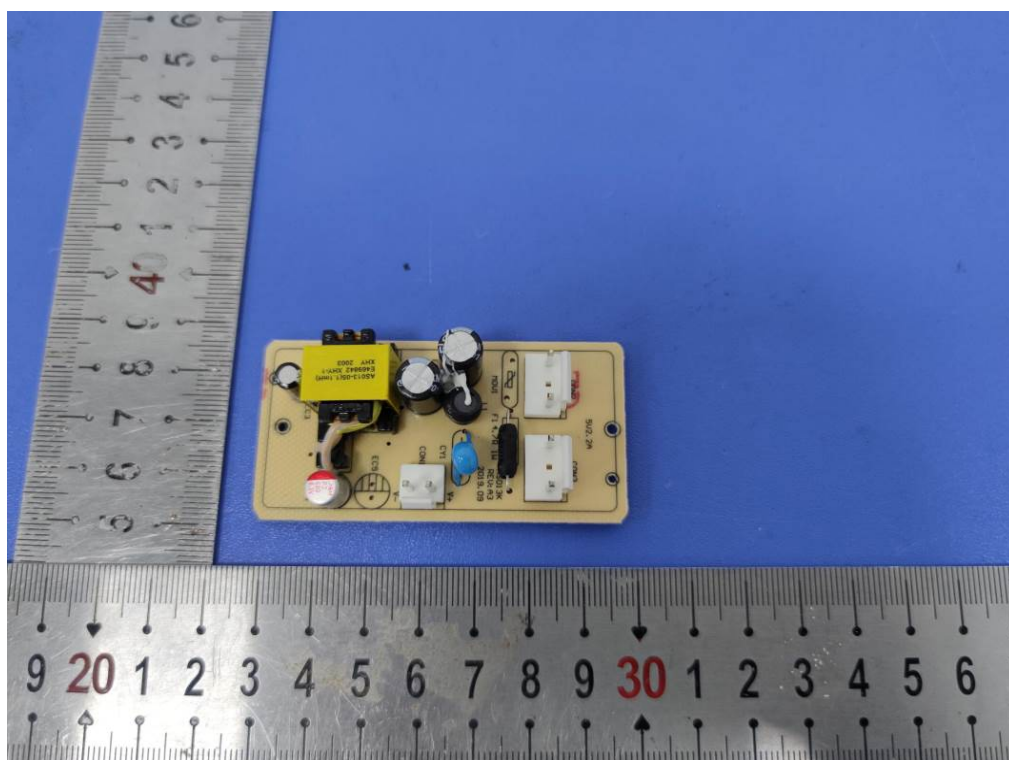


Fig.4

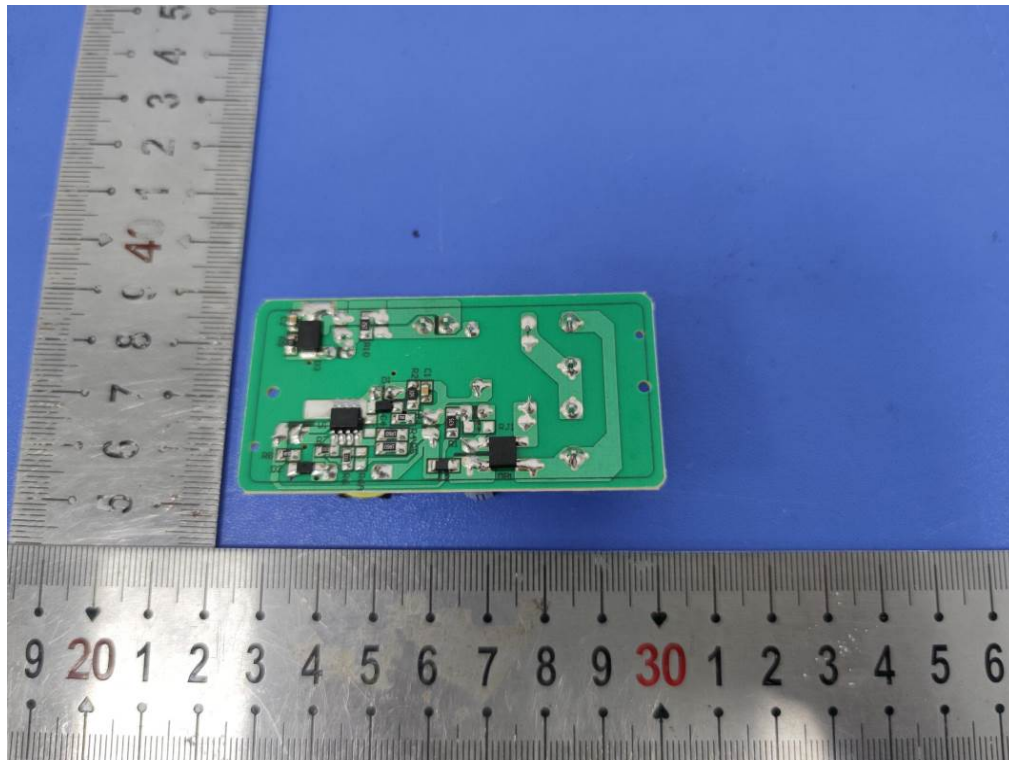


Fig.5

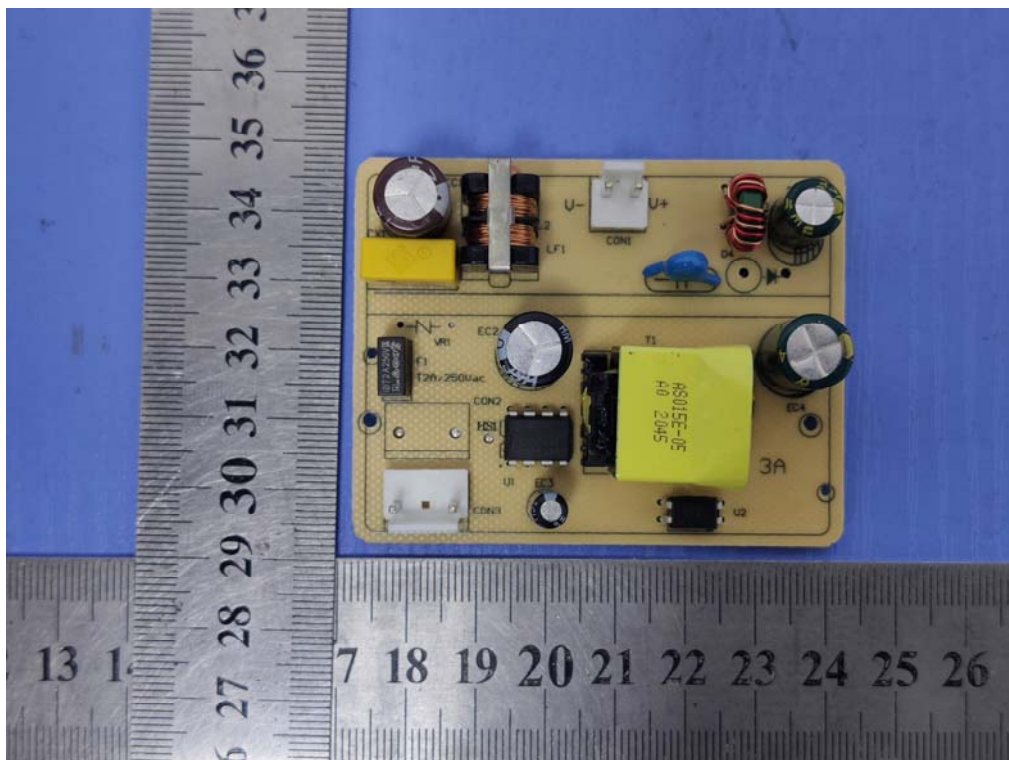


Fig.6

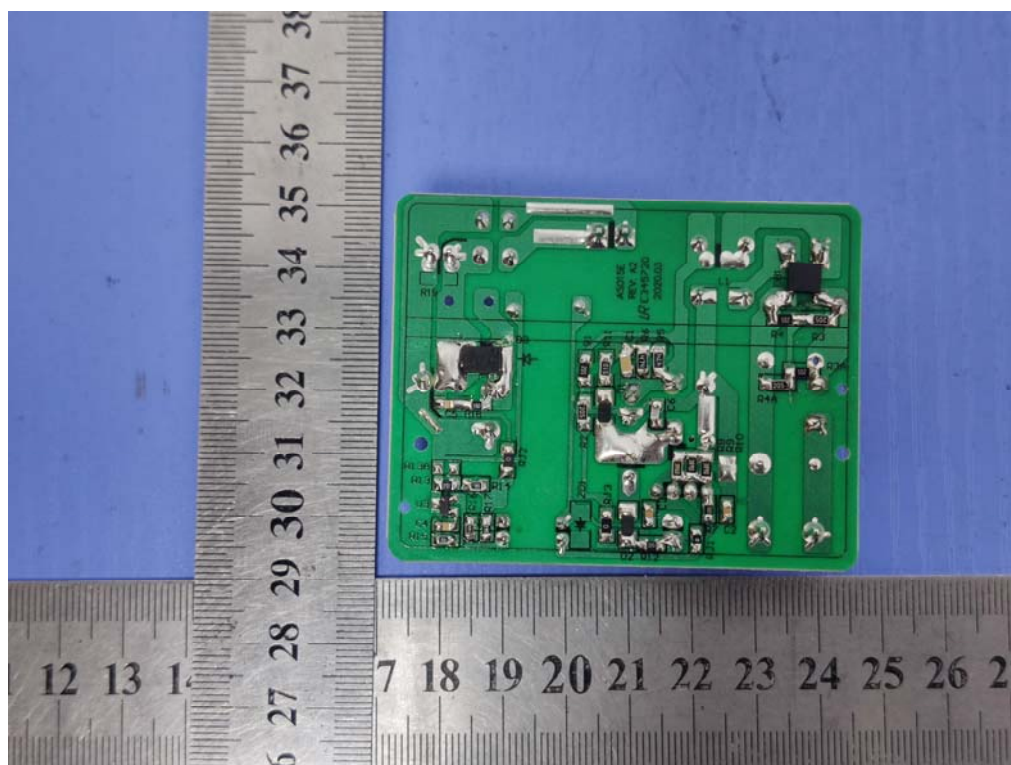


Fig.7

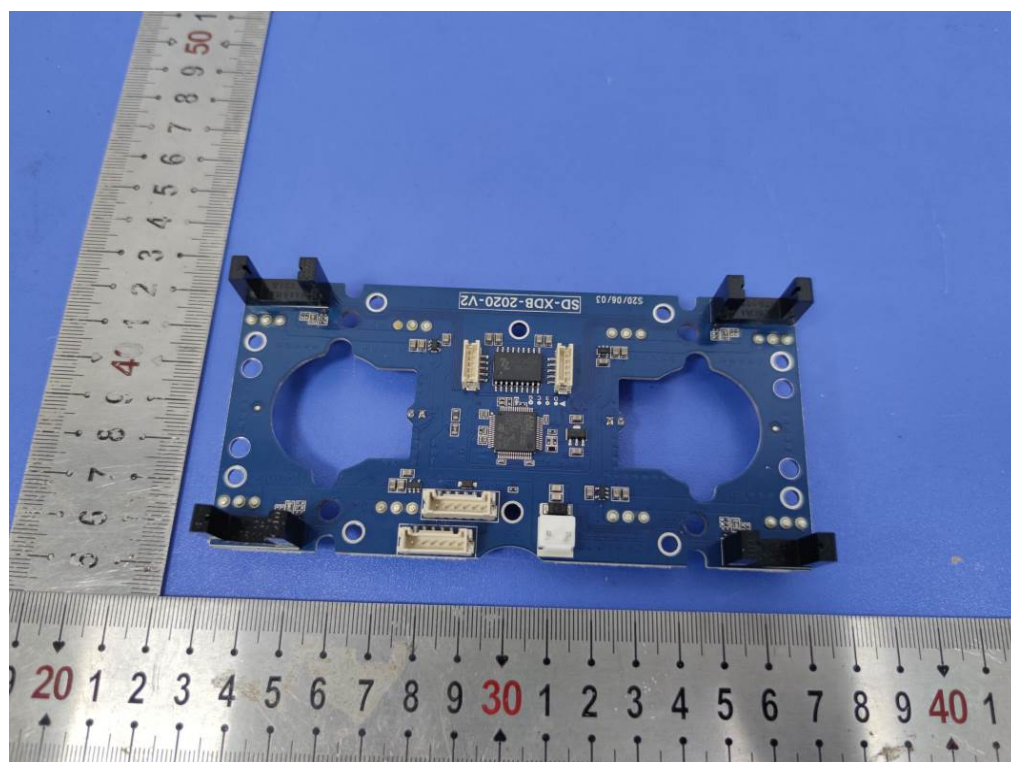


Fig.8

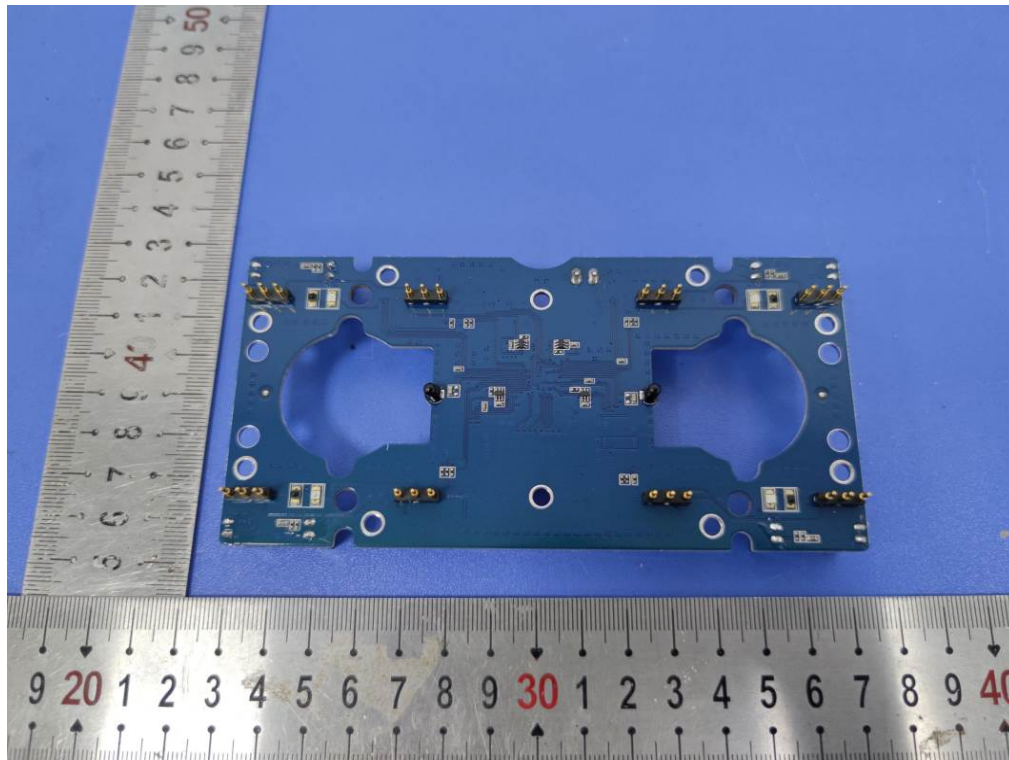


Fig.9

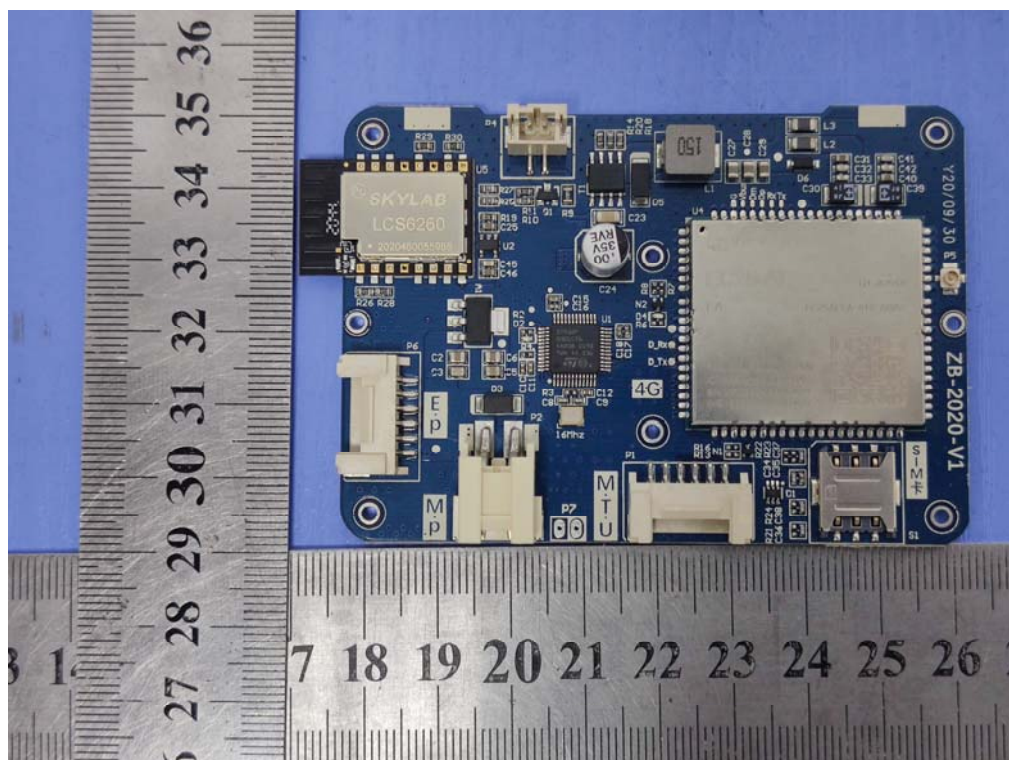


Fig.10

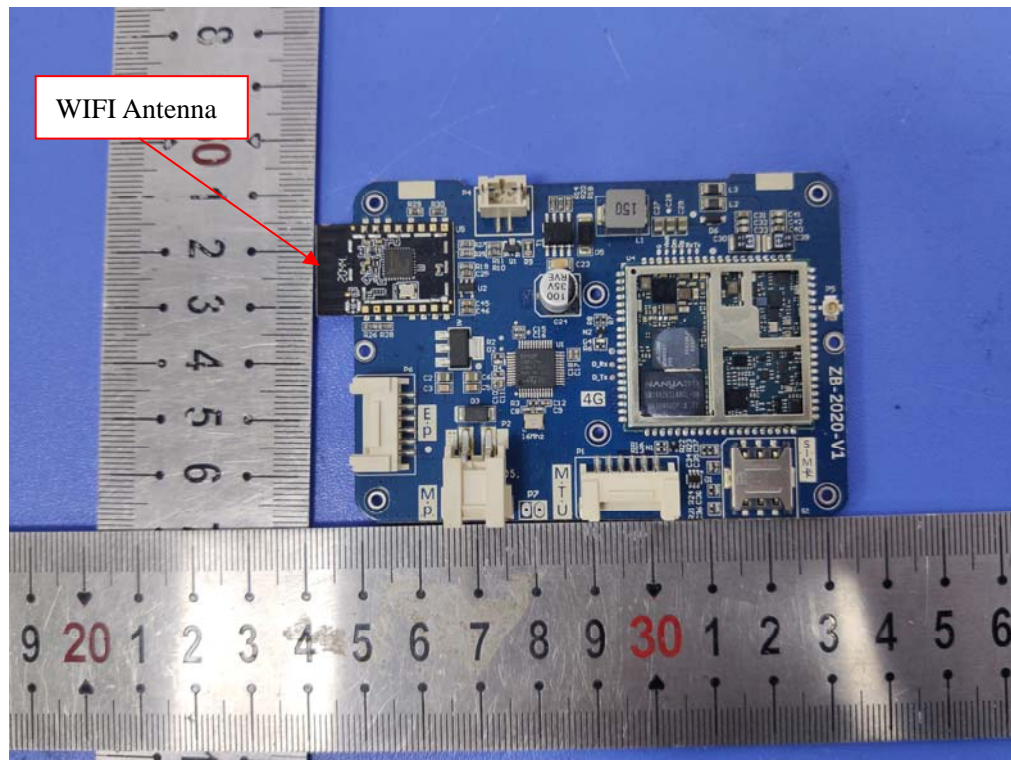


Fig.11

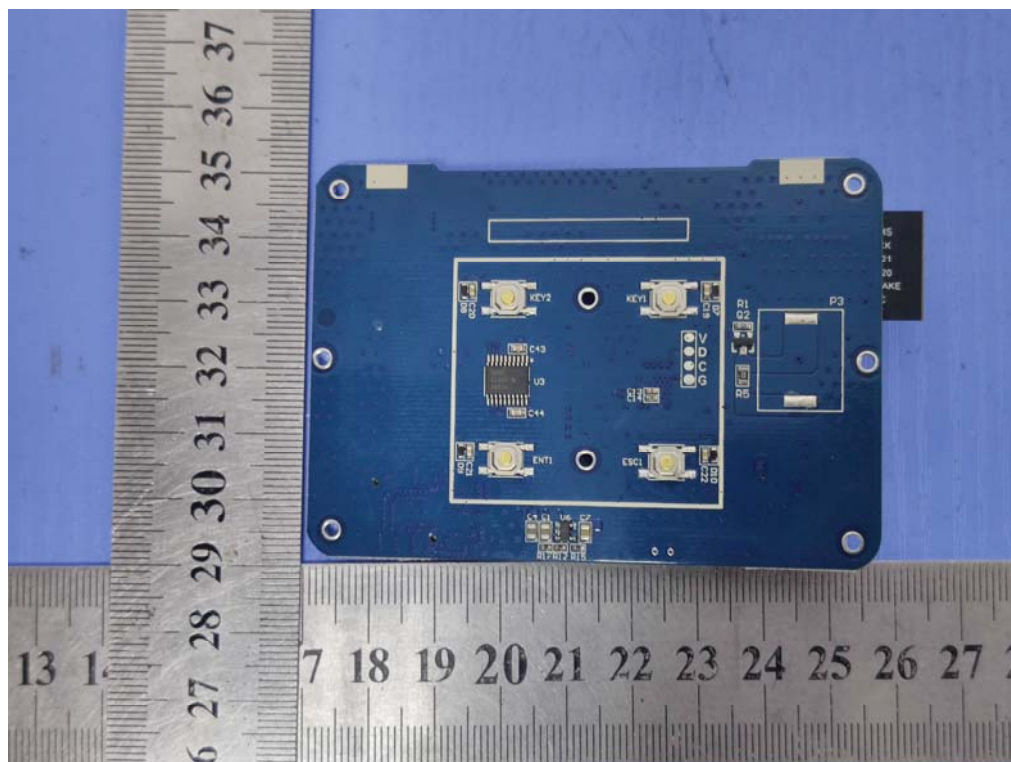


Fig.12

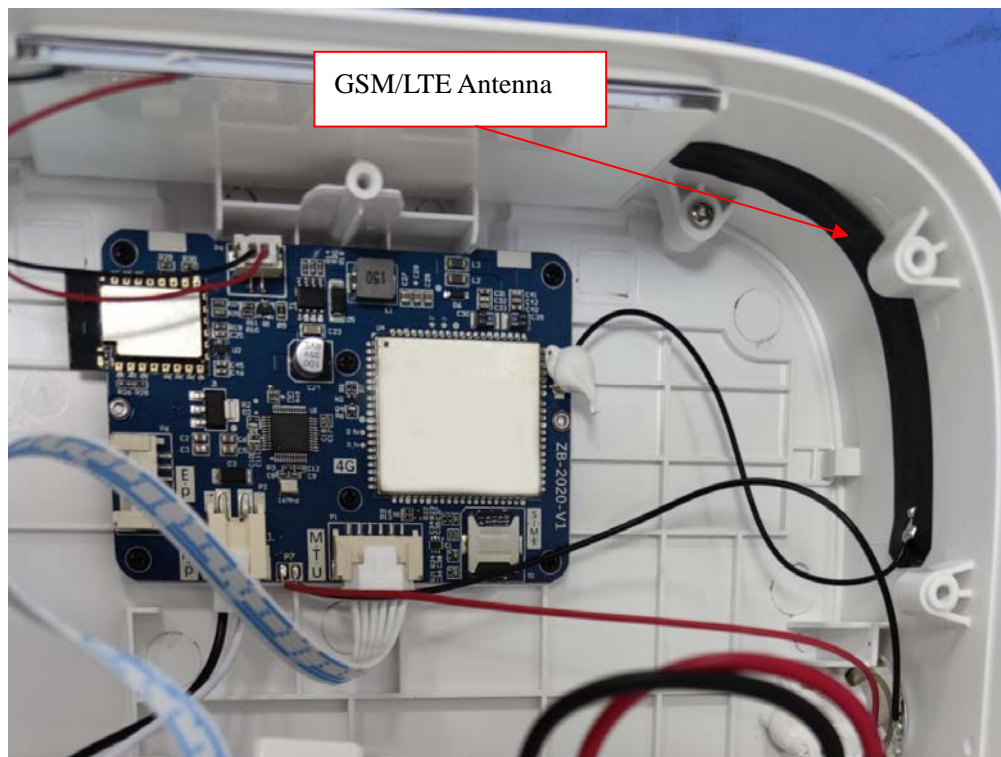


Fig.13

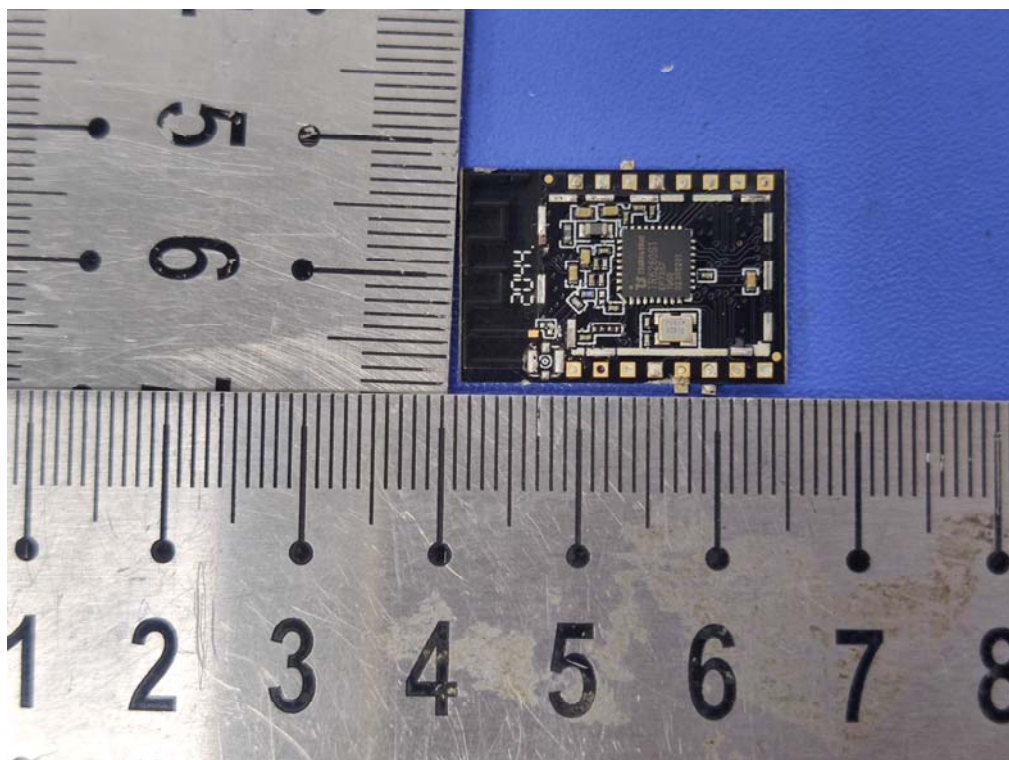


Fig.14

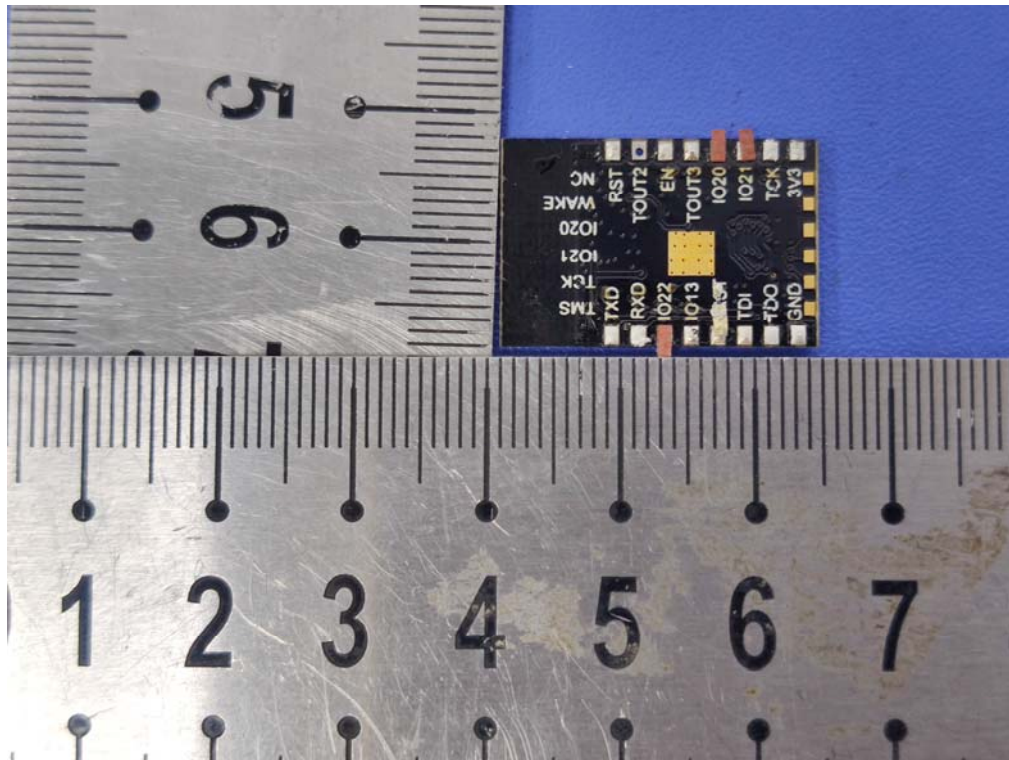


Fig.15

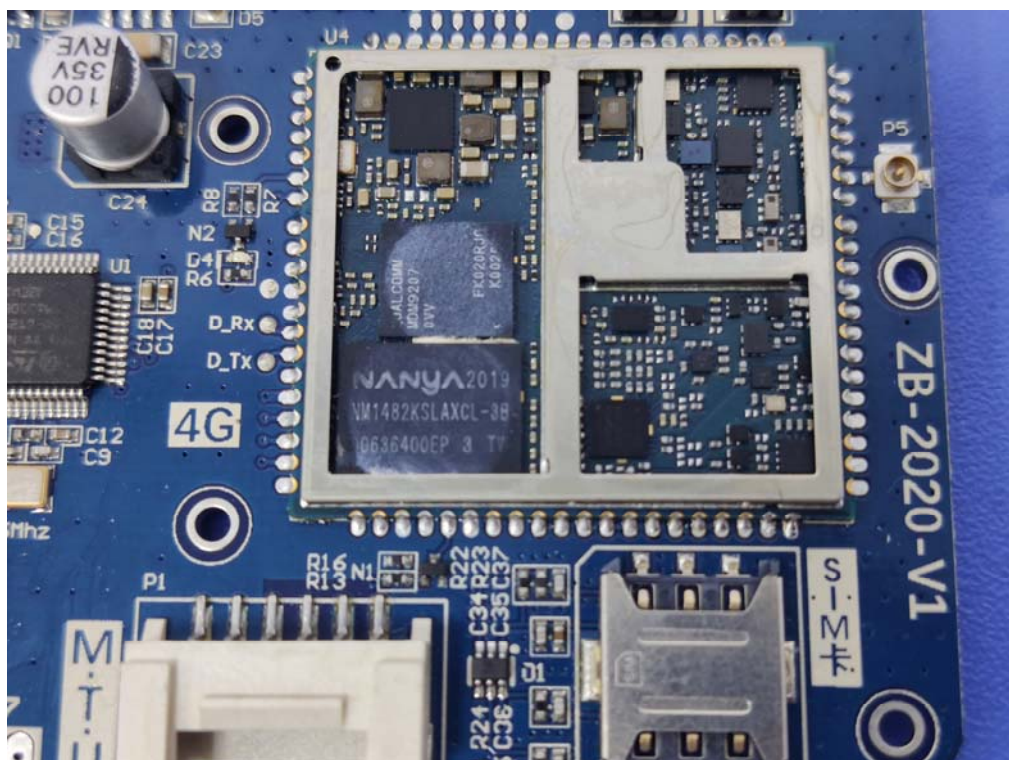


Fig.16



Fig.16

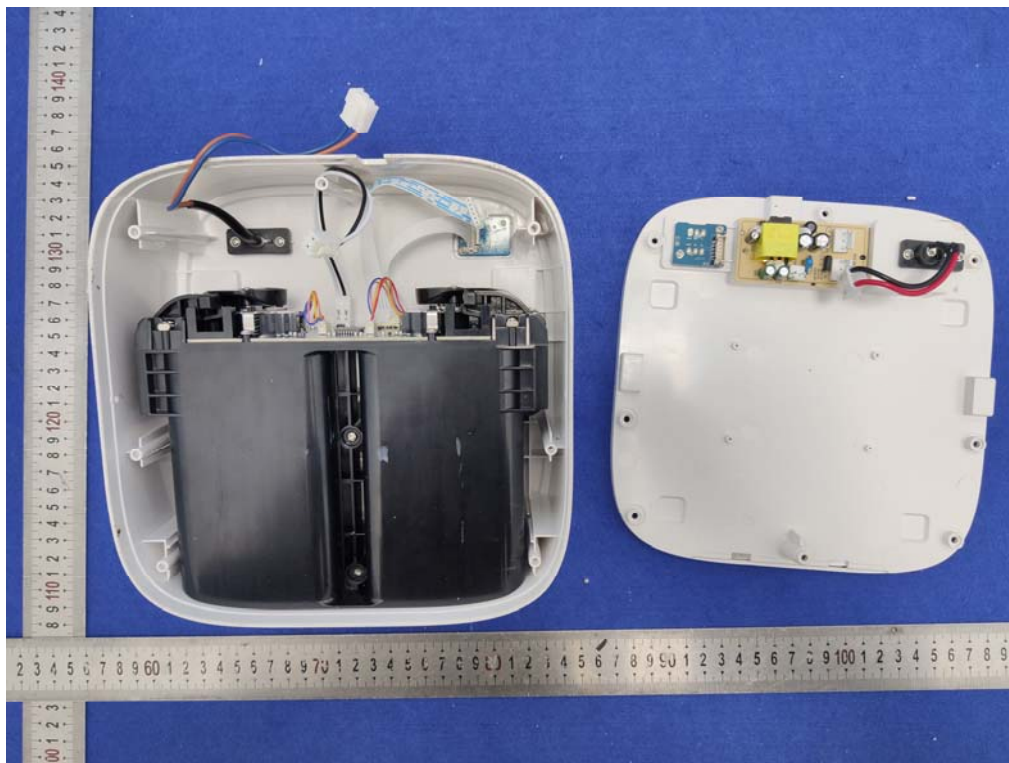


Fig.17

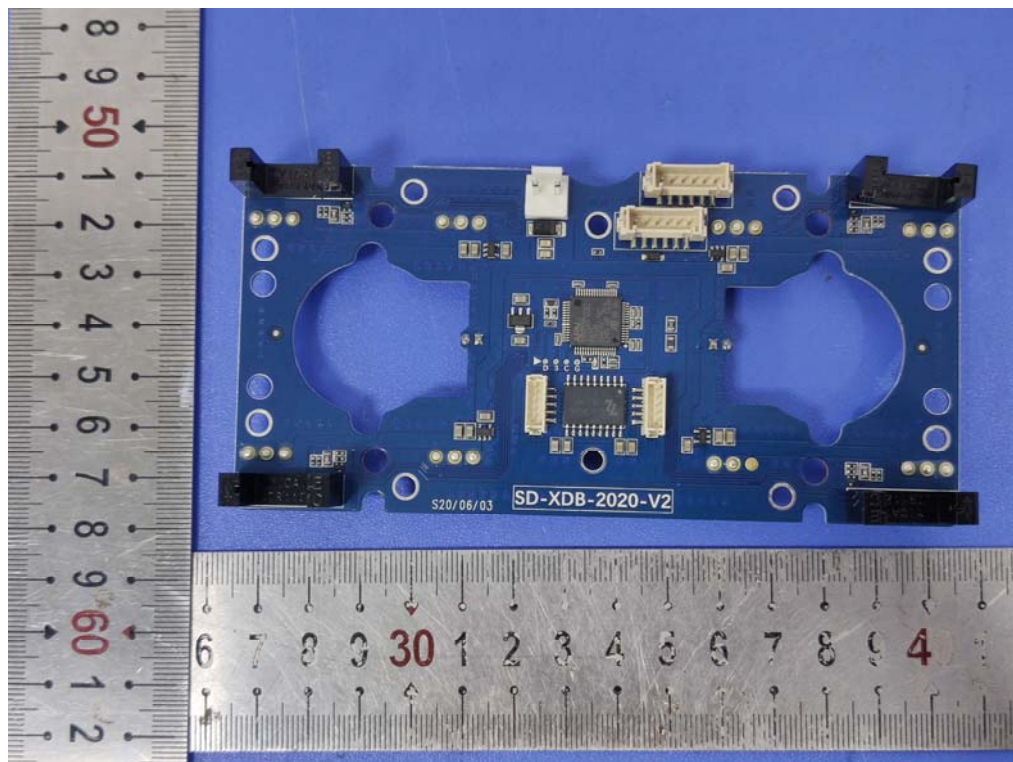


Fig.18

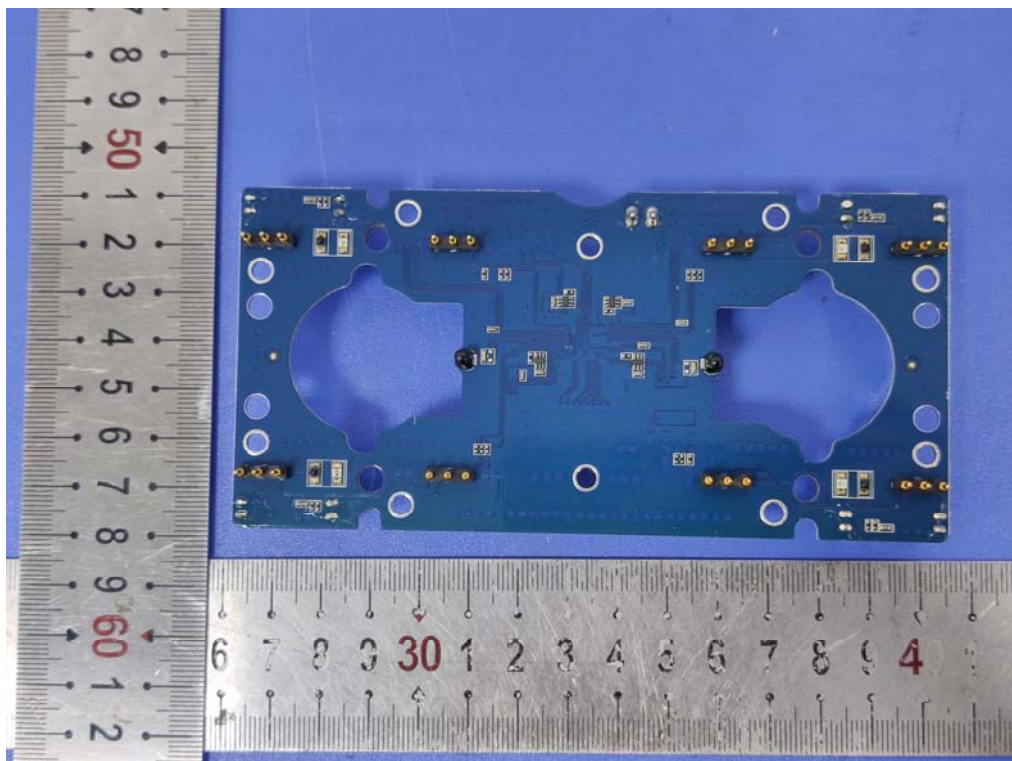


Fig.19

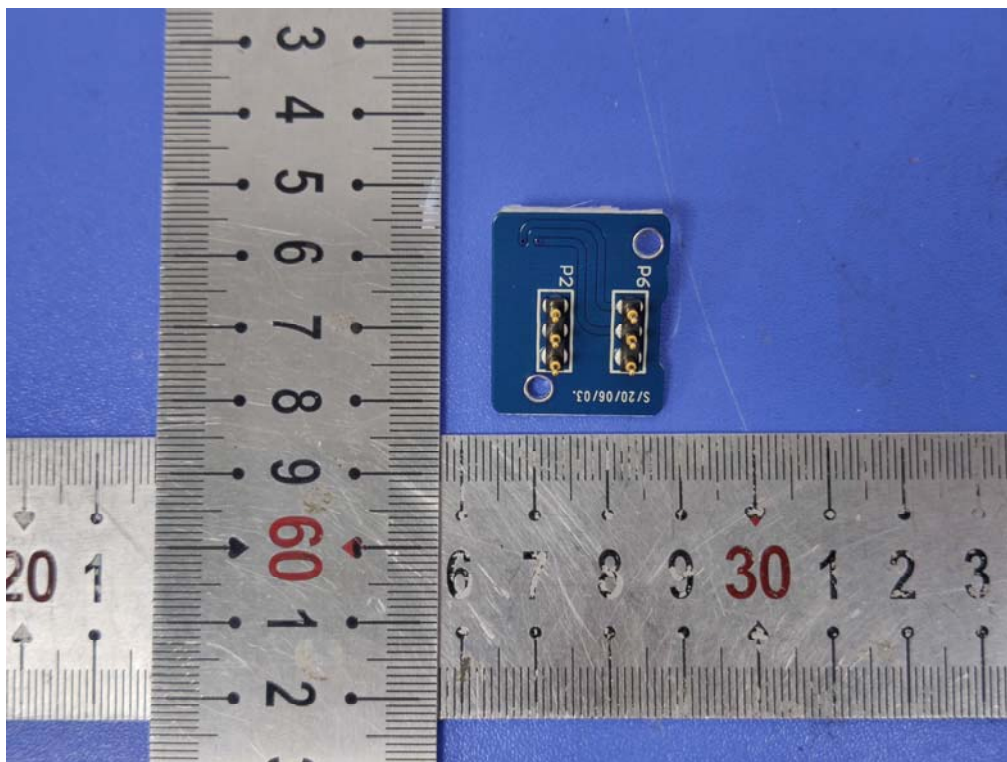


Fig.20

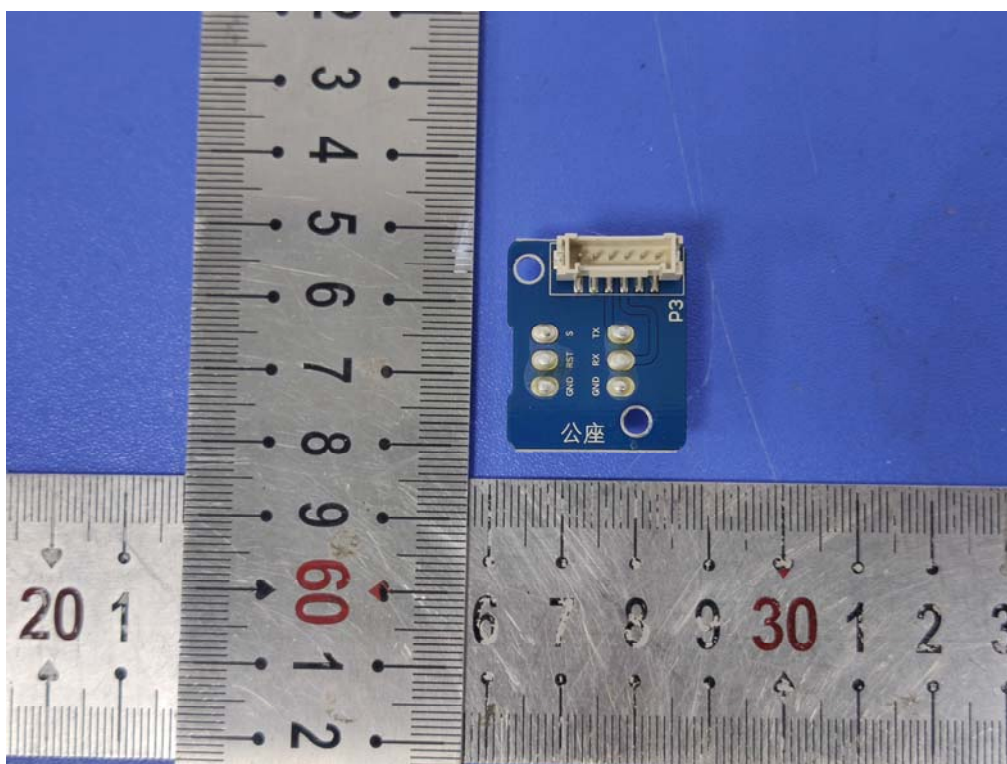


Fig.21

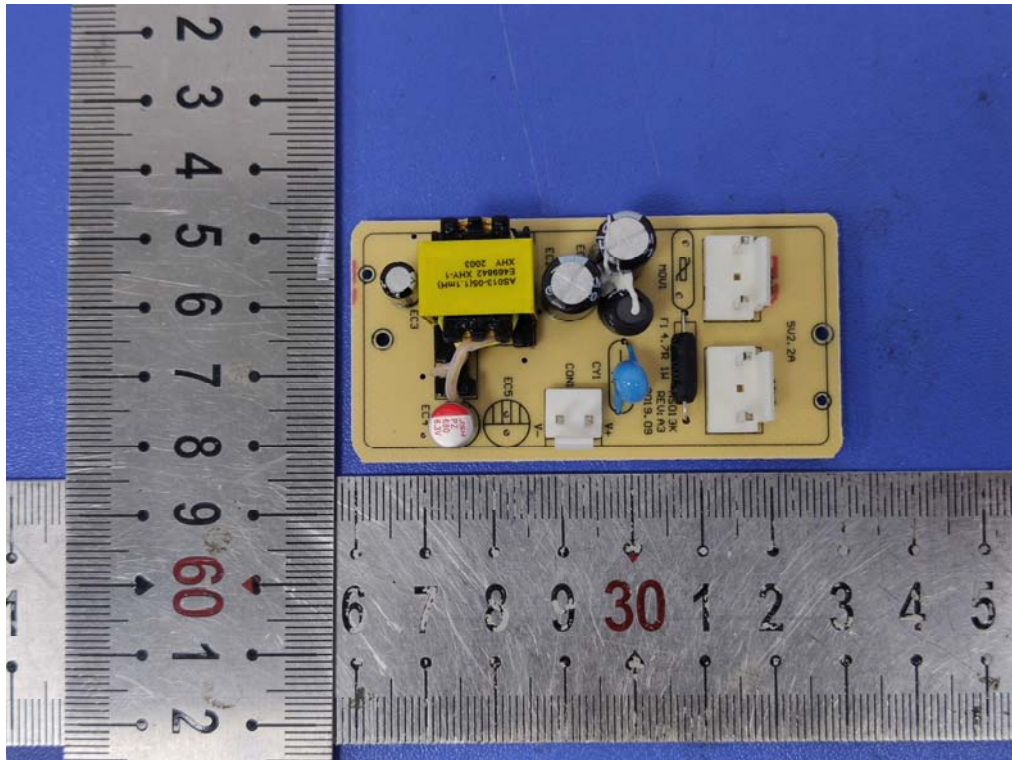


Fig.20

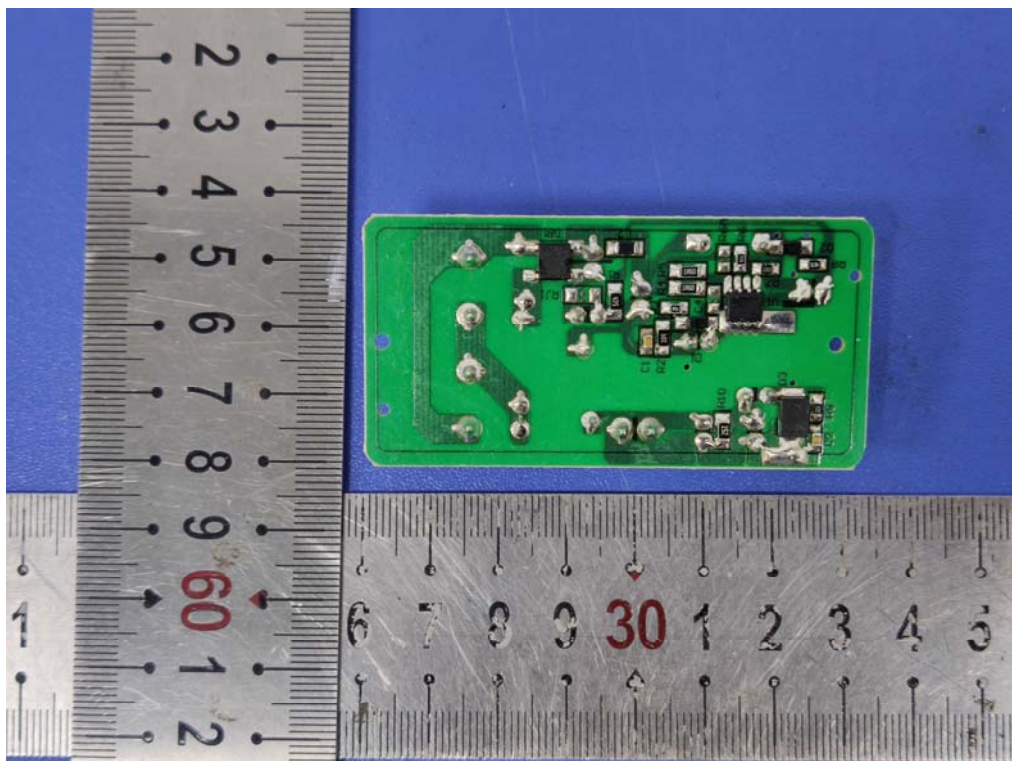


Fig.21

The difference between "4 mobile power loads" and "32 mobile power loads" is only the number of charging bins, and the internal structure of the charging bins is exactly the same.