



**COWABUNGA SKATE RC™**  
RAPH

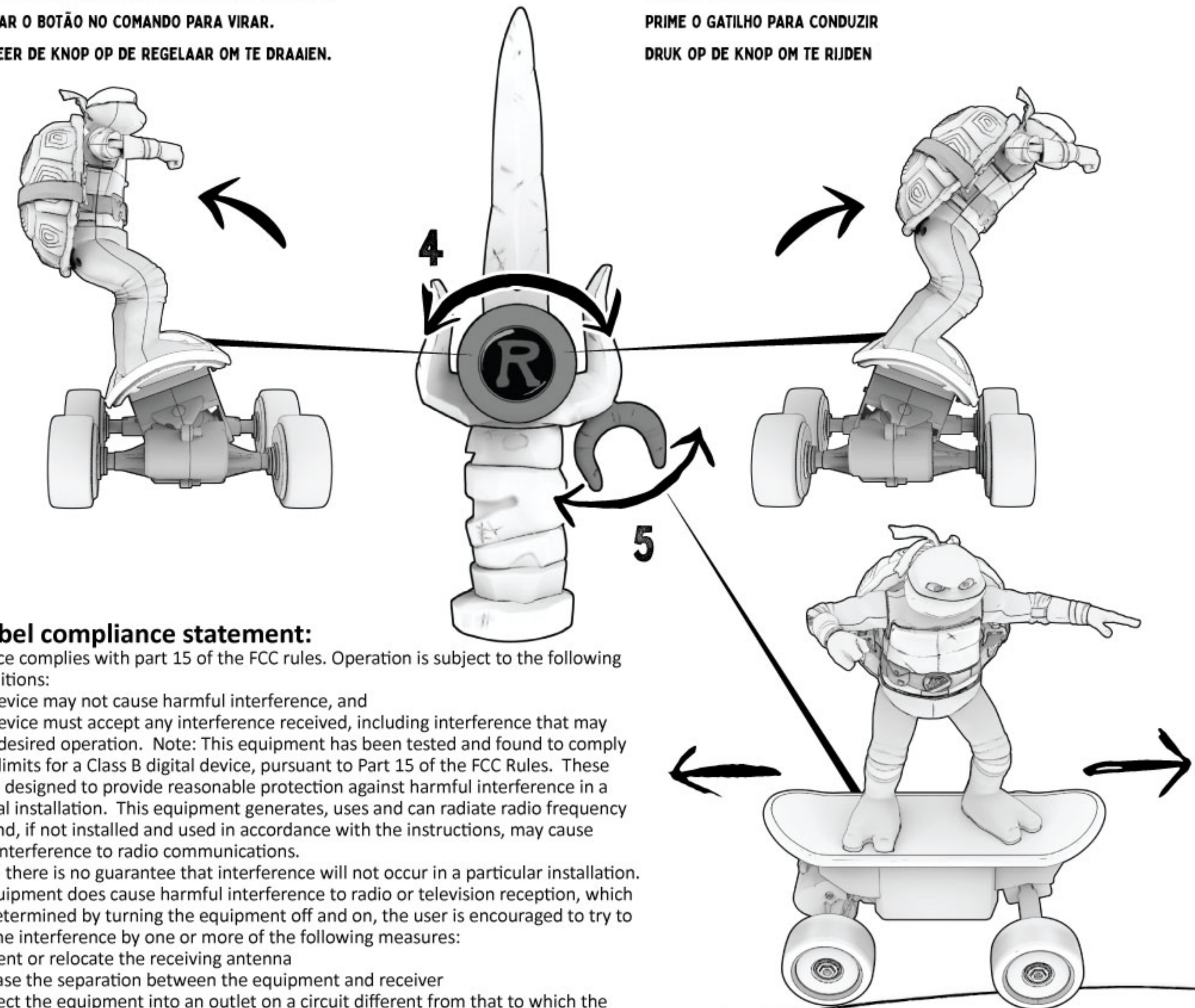
**CONTENTS** **CONTENU** **CONTENIDO** **INHOUD**  
**CONTENUTO** **CONTEÚDOS** **INHALT**



**REMOTE FUNCTIONS** **FONCTIONS DE LA TÉLÉCOMMANDE** **FUNCIÓNES DEL MANDO**  
**AFSTANDSBEDIENINGSFUNCTIES** **FUNZIONI DEL RADIOCOMANDO**  
**FUNÇÕES DO CONTROLE REMOTO** **FERNSTEUERUNG**

**4 ROTATE KNOB ON CONTROLLER TO TURN.**  
TOURNEZ LE BOUTON DU CONTRÔLEUR POUR FAIRE TOURNER.  
ROTE EL BOTÓN DEL MANDO PARA GIRAR.  
DREHEN SIE DEN KNOPF AM CONTROLLER, UM UMZUDREHEN.  
RUOTA LA MANOPOLA SUL CONTROLLER PER GIRARE.  
RODAR O BOTÃO NO COMANDO PARA VIRAR.  
ROTEER DE KNOP OP DE REGELAAR OM TE DRAAIEN.

**5 PUSH/PULL TRIGGER TO DRIVE**  
POUSSEZ/TIREZ SUR LA GÂCHETTE POUR CONDUIRE  
PRESIONE/EMPUJE EL GATILLO PARA CONDUCIR  
AUSLÖSER DRÜCKEN, UM ZU FAHREN  
PREMI IL GRILLETTO PER GUIDARE  
PRIME O GATILHO PARA CONDUZIR  
DRUK OP DE KNOP OM TE RIJDEN



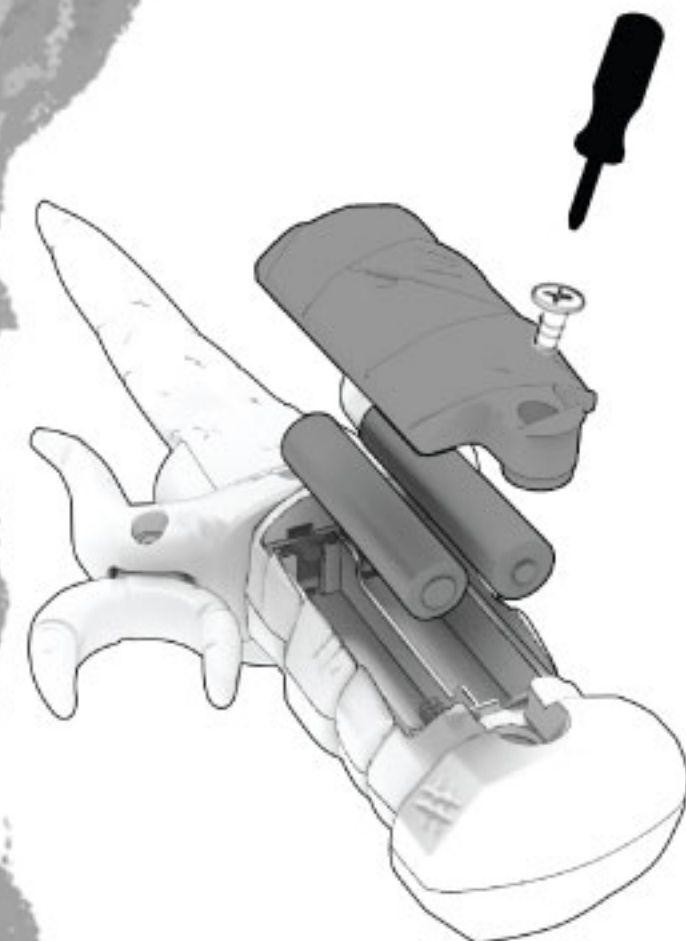
**POWER** **ALIMENTATION** **ALIMENTACIÓN** **LEISTUNG** **ENERGIA**  
**ALIMENTAÇÃO ELÉTRICA** **STROOM**

**1 BATTERIES AAA: 2 (NOT INCLUDED)**  
PILES : 2x AAA (NON FOURNIES)  
BATERÍAS: 2 TIPO AAA (NO INCLUIDAS)  
BATTERIJEN: 2x AAA (NIET INBEGREPEN)  
PILE: 2 AAA (NON INCLUSE)  
PILHAS: 2 AAA (NÃO INCLUSAS)  
BATTERIEN: 2 AAA (NICHT ENTHALTEN)

**2 CHARGING INDICATOR**  
CHARGING: RED  
CHARGED: GREEN  
PAIRING: CONTROLLER BLINKING  
**INDICATEUR LED**  
EN CHARGE: ROUGE  
COMPLÈTEMENT CHARGÉ: VERT  
APPARIEMENT: CONTRÔLEUR DE CLIGNOTANT

**LED-ANZEIGE**  
LÄDT: ROT  
VOLLSTÄNDIG GELADEN: GRÜN  
VERBINDUNG: BLINKENDER CONTROLLER  
**INDICATORE LED**  
RICARICA: ROSSO  
RICARICA COMPLETA: VERDE  
ABBINAMENTO: LAMPEGGIAMENTO DEL CONTROLLER  
**INDICADOR LED**  
A CARGAR: VERMELHO  
CARGA A 100%: VERDE  
A EMPARELHAR: CONTROLADOR A PISCAR  
**LED-LAMPJE**  
CHARGING: ROOD  
BATTERIJFOUT: GROEN  
KOPPELEN: CONTROLLER KNIPPERT

**NOTE: ALWAYS TURN OFF WHEN NOT IN USE**  
**REMARQUE: ÉTEIGNEZ TOUJOURS L'APPAREIL LORSQU'IL N'EST PAS UTILISÉ**  
**NOTA: APAGAR SIEMPRE QUE NO SE ESTÉ USANDO**  
**HINWEIS: BEI NICHTGEBRAUCH IMMER AUSSCHALTEN**  
**NOTA: SPENGERE SEMPRE QUANDO NON IN USO**  
**NOTA: DESLIGAR SEMPRE QUANDO NÃO ESTIVER A SER UTILIZADO**  
**OPMERKING: SCHAKEL ALTIJD UIT ALS NIET IN GEBRUIK**



Can be charged through either the USB-C or Micro USB ports. Includes only Micro USB charging cable.  
Peut être chargé à l'aide soit des ports USB-C ou des ports Micro USB. Comprend uniquement un câble de chargement Micro USB.  
Puede cargarse tanto con un puerto USB-C o uno de Micro USB. Incluye únicamente un cable de carga Micro USB.  
Kann entweder über USB-C oder über Micro-USB aufgeladen werden. Enthält nur ein Micro-USB-Ladekabel.  
Può essere ricaricato tramite le porte USB-C o Micro USB. Include solo cavo di ricarica Micro USB.  
Pode ser carregado através de portas USB-C ou Micro USB. Inclui apenas o cabo de carregamento para Micro USB.  
Kan zowel via de USB-C- als Micro USB-poorten worden opgeladen. Bevat alleen een micro-USB-oplaadkabel.

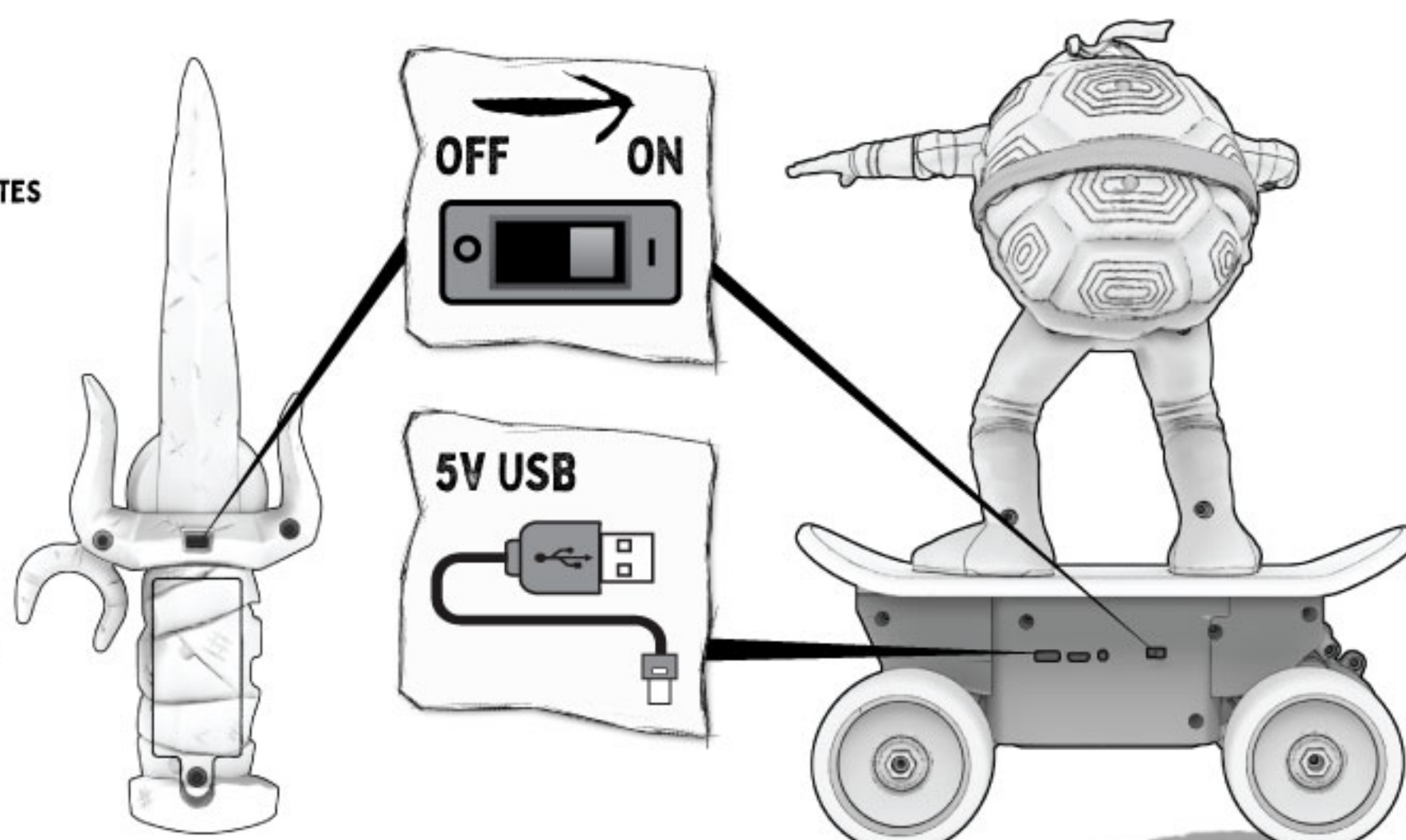
**FCC label compliance statement:**  
This device complies with part 15 of the FCC rules. Operation is subject to the following two conditions:

1. This device may not cause harmful interference, and
  2. This device must accept any interference received, including interference that may cause undesired operation. Note: This equipment has been tested and found to comply with the limits for a Class B digital device, pursuant to Part 15 of the FCC Rules. These limits are designed to provide reasonable protection against harmful interference in a residential installation. This equipment generates, uses and can radiate radio frequency energy and, if not installed and used in accordance with the instructions, may cause harmful interference to radio communications. However, there is no guarantee that interference will not occur in a particular installation. If this equipment does cause harmful interference to radio or television reception, which can be determined by turning the equipment off and on, the user is encouraged to try to correct the interference by one or more of the following measures:
    - Reorient or relocate the receiving antenna
    - Increase the separation between the equipment and receiver
    - Connect the equipment into an outlet on a circuit different from that to which the receiver is connected
    - Consult the dealer or an experienced radio/TV technician for help
- Warning:** Changes or modifications to this unit not expressly approved by the party responsible for compliance could void the user's authority to operate the equipment.

We reserve the right to improve/amend specifications and colors without notice.  
Nous nous réservons le droit d'améliorer ou de modifier les caractéristiques et les couleurs sans avertissement.  
Nos reservamos el derecho a mejorar/corregir especificaciones y colores sin previo aviso.  
Wir behalten uns das recht vor, spezifikationen und farben ohne vorankündigung zu verbessern/zu ändern.  
Ci riserviamo il diritto di migliorare/rivedere specifiche e colori senza preavviso.  
Reservamos o direito de melhorar ou alterar especificações e cores sem aviso prévio.  
We behouden ons het recht voor om specificaties en kleuren zonder voorafgaande kennisgeving te verbeteren/wijzigen.

\* All instruction sheets must be retained since it contains important information.  
\* Toutes les fiches d'instructions contiennent des informations importantes et doivent donc être conservées.\* Debe conservar todas las hojas de instrucciones porque contienen información importante.\* Alle Anleitungen müssen aufbewahrt werden, da sie wichtige Informationen enthalten.\* Alle instructiebladen moeten worden bewaard, omdat ze belangrijke informatie bevatten.\* Tutte le istruzioni vanno conservate, in quanto contengono informazioni importanti.\* Todos os manuais de instruções devem ser preservados, pois contém informações importantes.

**3 TURN ON REMOTE AND SKATEBOARD**  
ALLUMER LA TÉLÉCOMMANDE ET FAIRE DE LA PLANCHE À ROULETTES  
ENCIENDA EL CONTROL REMOTO Y EL MONOPATÍN  
FERNBEDIENUNG UND SKATEBOARD EINSCHALTEN  
ACCENDI IL TELECOMANDO E LO SKATEBOARD  
LIGA O COMANDO E O SKATEBOARD  
AFSTANDSBEDIENING EN SKATEBOARD INSCHAKELEN



FCC ID : 2AWSR-F71039A / FCC ID : 2AWSR-F71039B  
PMN : 71039

© 2023 VIACOM.

5+

**nickelodeon™** MOVIES

**TEENAGEMUTANTNINJATURTLISMOVIE.COM**

© 2023 Paramount Pictures. All Rights Reserved. TEENAGE MUTANT NINJA TURTLES and all related titles, logos and characters are trademarks of Viacom International Inc.

© 2023 Paramount Pictures. Tous droits réservés. Teenage Mutant Ninja Turtles et tous les autres titres, logos et personnages qui y sont associés sont des marques de commerce de Viacom International Inc.

© 2023 Paramount Pictures. Todos los derechos reservados. Teenage Mutant Ninja Turtles y todos los títulos, logotipos y personajes del mismo género son marcas de Viacom International Inc.

© 2023 Paramount Pictures. Alle rechten voorbehouden. Teenage Mutant Ninja Turtles en alle titels, logo's en figuren die daarmee verband houden, zijn handelsmerken van Viacom International Inc.

© 2023 Paramount Pictures. Tutti i diritti sono riservati. Teenage Mutant Ninja Turtles e tutti i relativi titoli, loghi e personaggi sono marchi della Viacom International Inc.

© 2023 Paramount Pictures. Todos os direitos reservados. Teenage Mutant Ninja Turtles e todos os títulos, logotipos e personagens relacionados são marcas de Viacom International Inc.

© 2023 Paramount Pictures. Alle Rechte vorbehalten. Teenage Mutant Ninja Turtles Titel, Logos und Figuren sind Warenzeichen von Viacom International Inc.

**FUNRISE™**  
FUNRISE.COM