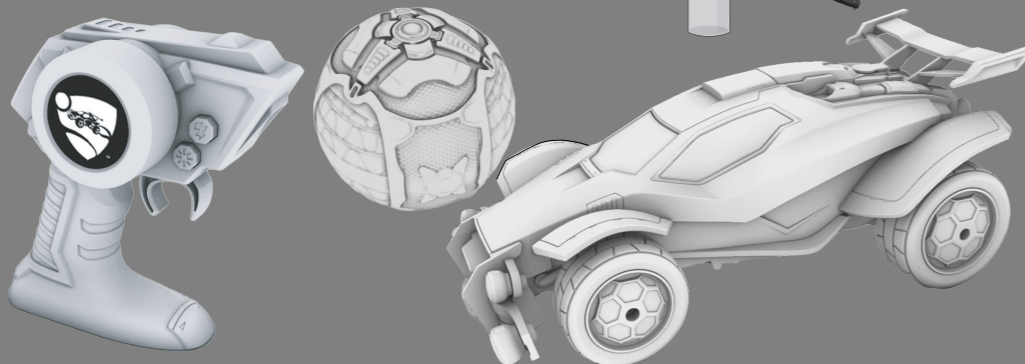


# ROCKET LEAGUE®

## OCTANE ZSR SMOKE RC™

• VEHICLE FUNCTIONS • FONCTIONS DU VÉHICULE • FUNCIONES DEL VEHÍCULO  
• VOERTUIGFUNCTIES • FUNZIONI DEL VEICOLO  
• FUNÇÕES DO VEÍCULO • FAHRZEUGFUNKTIONEN

• CONTENTS • CONTENU • CONTENIDO  
• INHOUD • CONTENUTO • CONTEÚDOS  
• INHALT



• Steering trim  
• Direction  
• Tapicería del volante  
• Stuurinrichting  
• Sterzo regolabile  
• Ajuste de Direção  
• Lenkhilfe

• ON • ALLUMÉ  
• ENCENDIDO • AN

• OFF • ÉTEINT  
• APAGADO • AUS

• TRY ME  
• ESSAYEZ-MOI !  
• ¡PRUEBAME!  
• PROBEER HET!  
• PROVAMI!  
• EXPERIMENTE!  
• PROBIER MICH AUS!

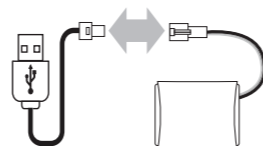
• REMOTE FUNCTIONS • FONCTIONS DE LA TÉLÉCOMMANDE • FUNCIONES DEL MANDO  
• AFSTANDSBEDIENINGSFUNCTIES • FUNZIONI DEL RADIOCOMANDO • FUNÇÕES DO CONTROLE REMOTO • FERNSTEUERUNG

• ON-OFF  
• ALLUMÉ-ÉTEINT  
• ENCENDIDO-APAGADO  
• AN-AUS

• Press for smoke • Appuyer pour créer de la fumée • Pulsa para producir humo • Druk voor rook • Premere per emettere fumo • Pressione para gerar fumaça • Für rauch drücken

• Light and sounds • lumière et sons • luz y sonidos • licht en geluiden • Licht und Geräusche • luz e sons • luce e suoni

• BATTERY INSTALLATION • INSTALLATION DE LA BATTERIE • INSTALACIÓN DE LA BATERÍA • INSTALLEREN VAN BATTERIJEN • INSTALLARE LA BATTERIA • INSTALAÇÃO DA BATERIA • EINSETZEN DER BATTERIEN



**CHARGING INDICATOR**  
Power On: Solid Indicator light  
Charging: The light color change  
Fully charged: Solid green light  
Battery error: RED light Strobe

**INDICATEUR DE CHARGEMENT**  
En marche : lumière de l'indicateur puissante  
En charge : la lumière change de couleur  
Complètement chargé : lumière verte puissante  
Erreur de batterie : Lumière rouge stroboscopique

**INDICADORES DE CARGA**  
Encendido: El indicador se enciende  
Cargando: El color de la luz cambia  
Carga completada: Indicador con luz verde  
Error con la batería: luz roja que parpadea

**LADEINDIKATOR**  
Eingeschaltet: Dauerlicht  
Lädt: Die Farbe des Lichts ändert sich  
Vollständig geladen: Grünes Dauerlicht  
Batteriefehler: ROTES Blitzlicht

**INDICATORE DI RICARICA**

Accensione: Spia fissa  
Ricarica: Il colore della spia luminosa cambia  
Ricarica completa: Spia verde fissa  
Errore batteria: Luce rossa lampeggiante

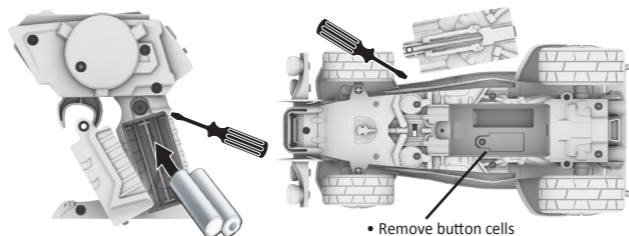
**INDICADOR DE CARREGAMENTO**

Ligado: Luz indicadora constante  
Carregando: A luz muda de cor Luz vermelha  
Bateria Completa: Luz verde constante  
Erro na bateria: Luz vermelha a piscar em padrão

**OPLAADINDICATOR**

Ingeschakeld: Het lampje brandt  
Aan het laden: Het lampje  
Volledig opgeladen: Het lampje brandt groen  
Batterijfout: flitsend rood licht

- Batteries AAA: 2 (not included)
- Piles : 2x AAA (non fournies)
- Baterías: 2 TIPO AAA (no incluidas)
- Batterijen: 2 x AAA (niet inbegrepen)
- Pile: 2 AAA (non include)
- Pilhas: 2 AAA (não incluídas)
- Batterien: 2 AAA (nicht enthalten)



- Remove button cells
- Supprimer les piles bouton
- Eliminar pilas de botón
- Knopfzellen entfernen
- Rimuovere le celle a bottone
- Verwijder knoopcellen
- Remover células de botão

### FCC label compliance statement:

This device complies with part 15 of the FCC rules. Operation is subject to the following two conditions:

1. This device may not cause harmful interference, and
2. This device must accept any interference received, including interference that may cause undesired operation. Note: This equipment has been tested and found to comply with the limits for a Class B digital device, pursuant to Part 15 of the FCC Rules. These limits are designed to provide reasonable protection against harmful interference in a residential installation. This equipment generates, uses and can radiate radio frequency energy and, if not installed and used in accordance with the instructions, may cause harmful interference to radio communications.

However, there is no guarantee that interference will not occur in a particular installation. If this equipment does cause harmful interference to radio or television reception, which can be determined by turning the equipment off and on, the user is encouraged to try to correct the interference by one or more of the following measures:

- Reorient or relocate the receiving antenna
- Increase the separation between the equipment and receiver
- Connect the equipment into an outlet on a circuit different from that to which the receiver is connected
- Consult the dealer or an experienced radio/TV technician for help

**Warning:** Changes or modifications to this unit not expressly approved by the party responsible for compliance could void the user's authority to operate the equipment.

DO NOT RETURN TO STORE  
FOR SUPPORT/CUSTOMER SERVICE PLEASE  
CONTACT CUSTOMERSERVICE@FUNRISE.COM

\* All instruction sheets must be retained since it contains important information.  
\* Toutes les fiches d'instructions contiennent des informations importantes et doivent donc être conservées.  
\* Debe conservarse todas las hojas de instrucciones porque contienen información importante.  
\* Alle Anleitungen müssen aufbewahrt werden, da sie wichtige Informationen enthalten.  
\* Alle instructiebladen moeten worden bewaard, omdat ze belangrijke informatie bevatten.  
\* Tutte le istruzioni vanno conservate, in quanto contengono informazioni importanti.  
\* Todos os manuais de instruções devem ser preservados, pois contêm informações importantes.

