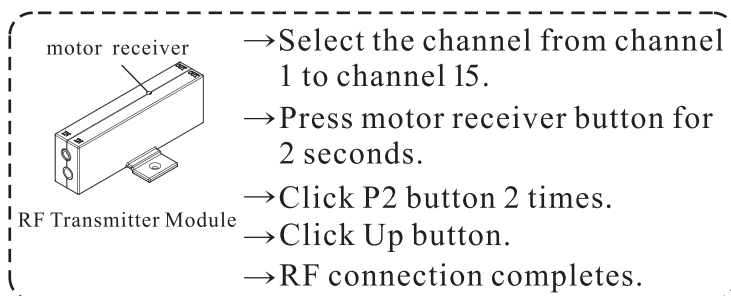
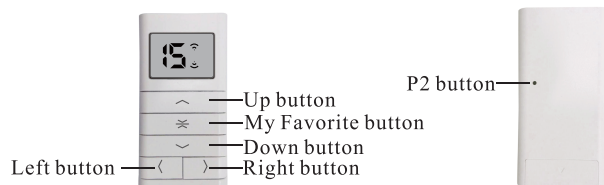


Instruction



How to program motorized shade :

* Remote Frequency Connection :



- Select the channel from channel 1 to channel 15.
- Press motor receiver button for 2 seconds.
- Click P2 button 2 times.
- Click Up button.
- RF connection completes.

* Set Upper Limit :



- Press Up to move the shade to upper limit.
- Press Up & My Favorite at the same time for 5 seconds.
- B - - -
- Setting upper limit complete.

* Set Bottom Limit :



- Press Bottom to move the shade to bottom limit.
- Press Bottom & My Favorite at the same time for 5 seconds.
- B - - -
- Setting bottom limit complete.

* Set My Favorite Position:



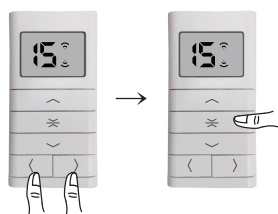
- Operate the shade to your favorite position.
- First press My Favorite for 5 seconds. B -
- Second press My Favorite again at 3 seconds interval.
- B - - -
- Setting My Favorite OK.

* Set Clear :



- Press 3 Buttons at the same time.
- Long B ~
- Setting OK.

* How to set the channel number :



- Press and hold the left button + right button at the same time, the "□" appears.
- Wait until "15" appears, then release the button.
- Press the left or right button.
- Select the desired number of channels.
- Press and hold the favorite (middle) key ("0" will appear first).
- Release the button when the channel number appears again.
- Setting completed.

- Before setting the shades , shades can only operate by pressing the button.
- Before setting the shades , My Favorite-Button can only stop.
- After setting the shades , press Up or Bottom button for 1.5 seconds , the shades will operate without finger pressing the button.
- After setting the shades , press My Favorite button for 1 second , the shades will operate to the favorite position.
- After setting the shades , press any button to stop.
- Reverse motor: Click Up button → Click My Favorite button → Press motor receiver for 5 seconds → Motor jugs twice within 2 seconds.
- Clear the frequency setting: Click P2 button → Click My Favorite button → Click P2 button.
- Add a remote control: Click P2 button 2 times → Add a remote control, press P2 button on the new remote which to add.
- Remove a remote control: Click P2 button 2 times → Remove a remote control, press P2 button on the remote which to remove.

FCC Statement

Any Changes or modifications not expressly approved by the party responsible for compliance could void the user's authority to operate the equipment.

This device complies with part 15 of the FCC Rules. Operation is subject to the following two conditions:

- (1) This device may not cause harmful interference, and
- (2) This device must accept any interference received, including interference that may cause undesired operation.