

Contents of this manual without the permission of the company shall not be free to change and replication, we reserve the right to change the product, if user needs the product further information can contact directly with the supplier.

3.6 Label model switching (black mark / label model)

This product is compatible with black mark mode and label mode, if you need to set the black mark mode, load the black mark paper and press down the FEED button for 5s, then the printer can automatically learn the black mark paper (the side with black mark facedown), otherwise switch the label mode, put the label paper and press down the FEED button for 5s to release that can automatically learn the label paper.

4. Communication connection

4.1 Wireless connection (Bluetooth)

This series of printers is equipped with a stable wireless connection mode, (SPP / BLE). Bluetooth SPP can support communication printing with mobile terminals installing Android operating system, and Bluetooth BLE can support communication printing with mobile terminals installing Apple iOS operating system.

Bluetooth connection method: After the printer is turned on, search the printer with Android and other Bluetooth communication devices, select the corresponding printer, enter the password (factory default: 0000) for connection, and it can be used normally after successful connection.

Description: The interface is optional, please refer to the actual product purchased

4.2 Wired connection (USB or serial interface)

Use the data cables packed with the printer to connect the printer to the PC, and then install the printer driver. The printer driver can be gotten from the attached CD or requested from suppliers or our customer service personnel.

Description: The interface is optional, please refer to the actual product purchased.

5. Accessories

Printer	1 pc
USB cable	1 pc
Power adapter	1 pc
Power cord	1 pc
User's manual	1 pc

Description: The specific product accessories may differ from this list. Please take the actual product purchased as. If you have any questions, please consult your supplier timely.

Appendix: Function description of the signal indicator

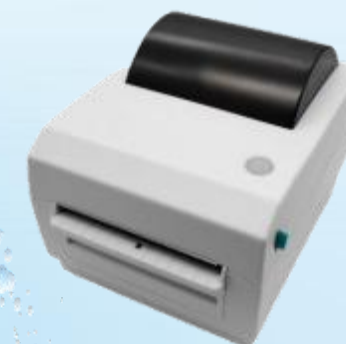
This printer has 2 indicators to remind the user of the status of the printer. Details are as follows:

operate	Printer status	Blue indicator	Red indicator
Power on	ON	Flash(with bluetooth) ON(without bluetooth)	OFF
Power off	OFF	OFF	OFF
/	Error	OFF	ON
Connect to Bluetooth	Bluetooth connected	ON	OFF
	Bluetooth disconnected	Flash	OFF

Buzzer instructions and troubleshooting

Buzzer	State description	Solutions
Beep 3 sounds	Out of paper	Load paper correctly
Beep 5 sounds	The print head is overheated	Wait for the printer to cool down and continue working
Beep 6 sounds	Cover opened	Close the cover correctly
Beep 8 sounds	Label calibration anomaly	Open the top cover, load the paper then close the cover, automatically learn the label paper

Thermal Label Printer User's Manual



Attentions:

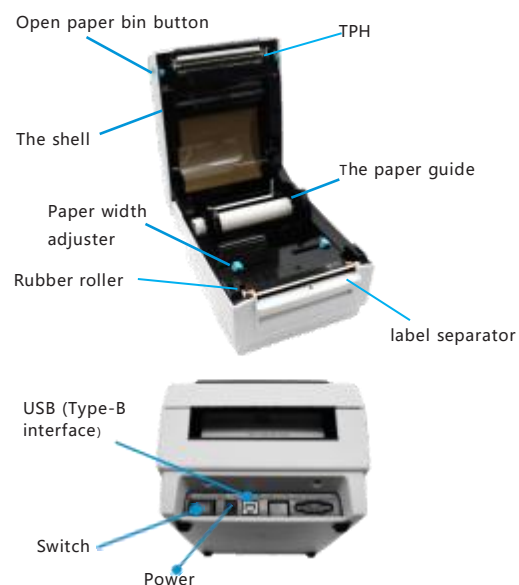
- 1.The printer shall be placed on a flat and stable platform to avoid damage caused by accidental fall.
- 2.The high environment temperature (>45°C) or the low temperature(<5°C) will reduce the print quality.
- 3.The high humidity (>85%RH) or the low humidity (<20%RH) will reduce the print quality.
- 4.Don't open the cover of paper bin in printing process.
- 5.Using low quality or storage too long time print paper will reduce the print quality, even damage the printer.
6. If there is dirt at the print head, need to use a soft cotton or cotton swab to dip alcohol and wipe it clean to prevent the print head from being worn.
7. Don't touch the print head and retainer directly in order to avoid damaging the print head because of static electricity. Don't scratch or touch the print head with a hardened object to avoid damaging the print head.
- 8.Please try to use up the battery before charging, which can effectively protect the battery life.
- 9.In the course of any accident, please disconnect the printer power supply, and remove the printer battery immediately.
- 10.If user disassemble the printer, the company has the right to refuse warranty on the product.

▲The printer uses a thermistor to detect the temperature of the print head. If the print head overheat, the circuit will cut off the print head and stop printing. The print head is protected by overheating at 80°C.

Storage Precautions:

1. If the printer is not used for a longer time, disconnect the power to the printer power adapter.
2. Ordinary thermal printing paper storage time is short. If you want to print documents that need preservation for a long time, please choose long-term thermal printing paper.
3. Heat-sensitive printing paper should not be stored in a place with high temperature, high humidity, or direct sunlight. If it has been unsealed, please put it in a place to avoid light.

1. Product introduction



2. Functions and features

Items		Parameter
Print parameters	Print method	Thermal dot line printing
	Resolution	203DPI, 8dots/mm
	Print width	108mm (864dots)
	Print speed	150mm/s
Communication	Wired	Standard USB, Type-B interface
	Wireless	Bluetooth (optional), SPP (Android), BLE (Apple iOS)
Storage	/	JPL / TSC / TSPL / EPL / CPCL / ESC Compatible instruction Set
	RAM FLASH	512KB FLASH: 16MB, NV bitmap FLASH: 64KB
Characters	Chinese	GB18030
	Characters and figures	ASCII
	User defined	Support
Tables	Language (Code page)	Support simplified & traditional Chinese, English and other 45 kinds of international character sets.
	/	Support dots printing with different densities Support raster bitmap print Support to download the bitmap print, the maximum size of each bitmap is not more than 64K, the total size of the download bitmap is 64K.
Barcode	1 D	UPC-A, UPC-E, EAN-8, EAN13, CODE39, ITF, CODEBAR, CODE128, CODE93
	2 D	QR Code
Detection	Sensor	Paper out, Cover open, label gap detection
Indicators	LED	Power indicator, Bluetooth indicator, error indicator
	Type	Standard thermal label paper
Printing Paper	Width	108mm
	Thickness	0.056~0.15mm (thermal label paper)
	External diameter	Maximum 100mm
	Paper loading	Easy to load paper structure
Physical characteristics	Paper tore	manual
	Operating environment	Temperature: -10°C ~ 50°C, Humidity: 25% ~ 80%RH
	Storage environment	Temperature: -40°C ~ 70°C, humidity: <93%RH (40°C)
	Size	226.66mm *178.6mm *160.76mm (Length* Wide*High)
Reliability	Weight	1.2Kg (Printer-only)
	TPH life	50Km
Software	Motor life	360,000 hours
	Drivers	Windows (WIN 10/WIN 8/WIN 7//Vista /XP /2000)
	APP	UBUNTU 12.04 32/64 UBUNTU 14.04 32/64 Easy Label, Printer setting tools, etc

3. Basic operation

3.1 Power on

Connect the power cord and power adapter of the printer, press down the power switch, then the printer power on. At this time, the power indicator is on, and the buzzer prompts a beep.

3.2 Power off

When the printer on, press down the switch that can make printer off. At this time, all the indicators off, and the printer off and stops working.

3.3 Automatic label learning

In power on and cover open status, load down the thermal label roll, close the cover, then the printer will automatically learn to detect the label gap.

3.4 Print self-test page

After the user gets the printer, the printer can be self-test to detect the current settings and working status. When the printer is power off and the print paper is loaded correctly, press down the "Power on/off" button and "Feed" button simultaneously, after hearing a beep sound, release the two buttons, the printer will print a self-test page. The self-test page contains information about the current status of the printer, settings and printing examples, such as the Bluetooth PIN, Bluetooth BDA, printing language, program version, font, etc.

3.5 Feeding paper (Manual feed)

In the normal working status, press the "Feed" button, the printer will feed paper.



Loading direction of paper roll

FCC Caution.

This device complies with part 15 of the FCC Rules. Operation is subject to the following two conditions: (1) This device may not cause harmful interference, and (2) this device must accept any interference received, including interference that may cause undesired operation.

Any Changes or modifications not expressly approved by the party responsible for compliance could void the user's authority to operate the equipment.

Note: This equipment has been tested and found to comply with the limits for a Class B digital device, pursuant to part 15 of the FCC Rules. These limits are designed to provide reasonable protection against harmful interference in a residential installation. This equipment generates uses and can radiate radio frequency energy and, if not installed and used in accordance with the instructions, may cause harmful interference to radio communications. However, there is no guarantee that interference will not occur in a particular installation. If this equipment does cause harmful interference to radio or television reception, which can be determined by turning the equipment off and on, the user is encouraged to try to correct the interference by one or more of the following measures:

- Reorient or relocate the receiving antenna.
- Increase the separation between the equipment and receiver.
- Connect the equipment into an outlet on a circuit different from that to which the receiver is connected.
- Consult the dealer or an experienced radio/TV technician for help.

***RF warning for Mobile device:**

This equipment complies with FCC radiation exposure limits set forth for an uncontrolled environment. This equipment should be installed and operated with minimum distance 20cm between the radiator & your body.