

Specification for

Bluetooth module

Version

V1.1 | July 2020



1overview

Introduction

BT11 - V1.1 (503) is a small bluetooth module based on TC35661SBG - 503. It can be easily integrated into the motherboard CB821, with functions of bluetooth communication. At the same time can connect a AnZhuoDuan equipment or IOS devices. Support bluetooth 2.0 and bluetooth 4.0 protocol, embedded within the PCB antenna port. The module is easy to use simple, function stability.

Main Parameter:

Voltage is 1.8V or 3.3V

Support bluetooth 2.0 protocol and Bluetooth 4.0 protocol

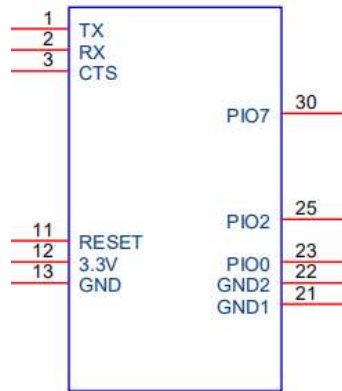
Operation Frequency:2402-2480MHz

Maximum Peak Output Power:-12.11dBm

packaging

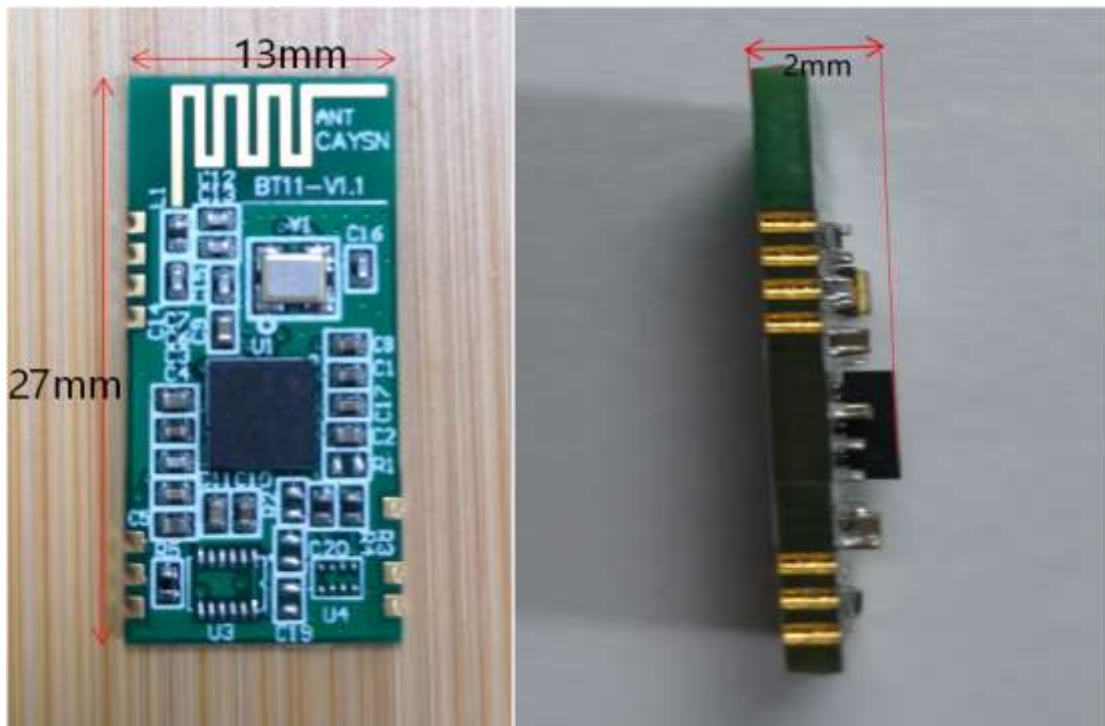


Pin Definitions:



Pin number	Signal name	Direction
1	TX	output
2	RX	input
3	CTS	Flow Control
11	RESET	Reset
12	3.3V	Power
13	GND	GND Ground
21	GND1	GND Ground
22	GND2	GND Ground
23	PIO0	NULL
25	PIO2	NULL
30	PIO7	NULL

Dimensions



FCC Warning:

FCC Statement:

Any Changes or modifications not expressly approved by the party responsible for compliance could void the user's authority to operate the equipment.

This device complies with part 15 of the FCC Rules. Operation is subject to the following two conditions:

- (1) This device may not cause harmful interference, and
- (2) This device must accept any interference received, including interference that may cause undesired operation.

FCC Radiation Exposure Statement:

This equipment complies with FCC radiation exposure limits set forth for an uncontrolled environment. This equipment should be installed and operated with minimum distance 20cm between the radiator& your body.

Note: This equipment has been tested and found to comply with the limits for a Class B digital device, pursuant to part 15 of the FCC Rules. These limits are designed to provide reasonable protection against harmful interference in a residential installation. This equipment generates, uses and can radiate radio frequency energy and, if not installed and used in accordance with the instructions, may cause harmful interference to radio communications. However, there is no guarantee that interference will not occur in a particular installation. If this equipment does cause harmful interference to radio or television reception, which can be determined by turning the equipment off and on, the user is encouraged to try to correct the interference by one or more of the following measures:

- Reorient or relocate the receiving antenna.
- Increase the separation between the equipment and receiver.
- Connect the equipment into an outlet on a circuit different from that to which the receiver is connected.
- Consult the dealer or an experienced radio/TV technician for help.

The host product should have the proper label and to identify the host module within the product. Module when installed on the host product certification label should always be clearly.

INTEGRATION INSTRUCTIONS

1. This module has been tested and found to comply with the FCC Part15.247 for Modular Approval.
2. This Modular Approval is limited to OEM installation for mobile and fixed applications only. The antenna installation and operating configurations of this transmitter, including any applicable source-based time- averaging duty factor, antenna gain and cable loss must satisfy MPE categorical Exclusion Requirements of 2.1091. This modular should be installed and operated with minimum distance 20 cm between the radiator& your body.
3. The maximum antenna gain is 0dBi.For situations where the host manufacturer is responsible for an external connector, the integration instructions shall inform the installer that a unique antenna connector must be used on the Part 15 authorized transmitters used in the host product.
4. When the module is installed in the host device, the FCC ID label must be visible through a window on the final device or it must be visible when an access panel, door or cover is easily removed. If not, a second label must be placed on the outside of the final device that contains the following text: —Contains FCC ID: 2AWQ6BT11
5. The Xiamen Apt Electronic Tech. Co., Ltd uses various test mode programs for test set up which operate separate from production firmware. Host integrators should contact Xiamen Apt Electronic Tech. Co., Ltd for assistance with test modes needed for module/host compliance test requirements.
6. The Xiamen Apt Electronic Tech. Co., Ltd Bluetooth module is FCC authorized for the FCC Part15.247 listed on the grant, and that the host product manufacturer is responsible for compliance to any other FCC rules that apply to the host not covered by the Bluetooth module grant of certification. If the grantee markets their product as being Part 15 Subpart B compliant, then the grantee shall provide a notice stating that the final host product still requires Part 15 Subpart B compliance testing with the Bluetooth module installed.
- 7.The module is limited to use in the host.the host FCC ID is 2AWQ6CB821,product name is thermal printer,main model is CB821-USEB.
the limited module manufacturer reviews detailed test data or host designs prior to giving the host manufacturer approval.