

"High Frequency Ceramic Solutions"

2450 MHz Antenna

P/N 2450AT43B100

NEW with Ground Clearance Requirements Minimized

Detail Specification: 04/26/06

Page 1 of 4

General Specifications

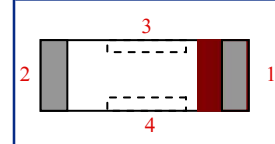
Model	2450AT43B100
Frequency Range	2400 - 2500 Mhz
Peak Gain	1 dBi typ. (XZ-V)
Average Gain	-0.5 dBi typ. (XZ-V)
Return Loss	9.5 dB min.

Input Power	3W max.
Impedance	50 Ω
Operating Temperature	-40 to +85°C
Reel Quantity	1,000

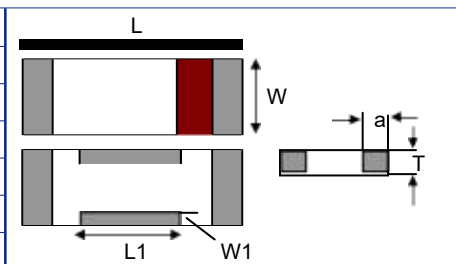
P/N	Packaging Style	Bulk	Suffix = S	Eg. 2450AT43B100S
		T & R	Suffix = E	Eg. 2450AT43B100E
Suffix	Termination Style	100% Tin	Suffix = None	Eg. 2450AT43B100(E or S)
		Tin / Lead	Please consult Factory	

Terminal Configuration

No.	Function
1	Feed Point
2	* Anchoring Pin
3	* Anchoring Pin
4	* Anchoring Pin



Mechanical Dimensions

	In	mm	
L	0.276 ± 0.008	7.00 ± 0.20	
W	0.079 ± 0.008	2.00 ± 0.20	
L1	0.102 ± 0.008	2.60 ± 0.20	
W1	0.020 ± 0.008	0.50 ± 0.20	
T	0.079 +.004/-0.008	2.00 +0.1/-0.2	
a	0.020 ± 0.012	0.50 ± 0.30	

Johanson Technology, Inc. reserves the right to make design changes without notice.
All sales are subject to Johanson Technology, Inc. terms and conditions.



www.johansontechnology.com

931 Via Alondra • Camarillo, CA 93012 • TEL 805.389.1166 FAX 805.389.1821

2003 Johanson Technology, Inc. All Rights Reserved

"High Frequency Ceramic Solutions"

2450 MHz Antenna

Detail Specification: 04/26/06

P/N 2450AT43B100

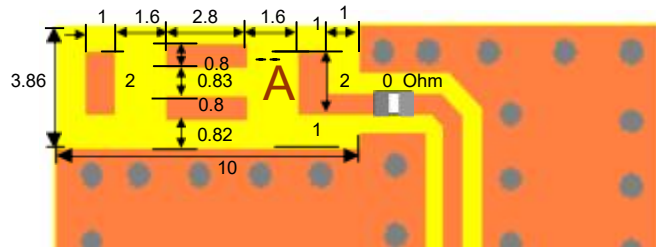
Page 2 of 4

Mounting Considerations

Mount these devices with brown mark facing up. Units: mm

Line width should be designed to provide 50Ω impedance matching characteristics.

* Note: Pins 3 & 4, although "NC", must be soldered to its PCB pads for proper electrical operation

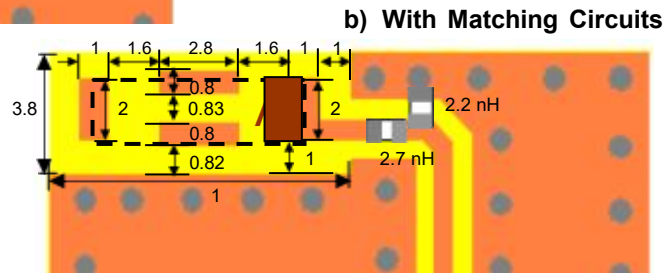


a) Without Matching Circuits

Matching Component JTI P/Ns:

L-14C2N7JV4

L-14C2N2JV4



b) With Matching Circuits

"High Frequency Ceramic Solutions"

2450 MHz Antenna

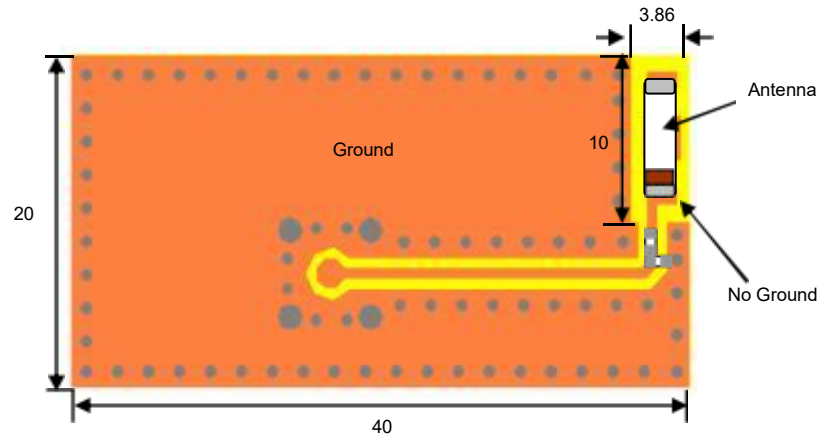
Detail Specification: 04/26/06

P/N 2450AT43B100

Page 3 of 4

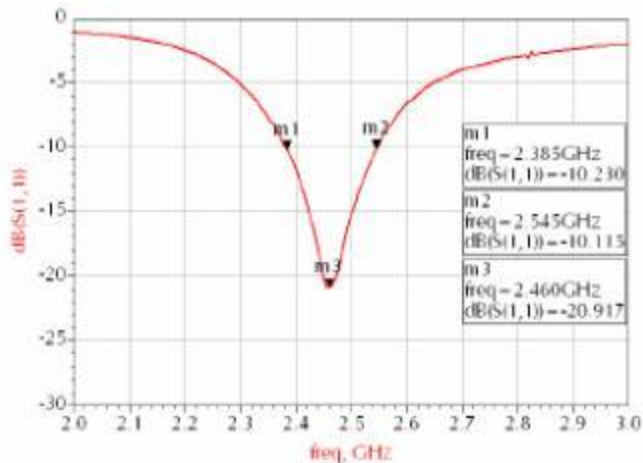
Typical Electrical Characteristics (T=25°C)

Test Board:



Return Loss

a) With Matching Circuit



	2400MHz	2450MHz	2500MHz
Gain(dBi)	0.88	1.00	0.97

Johanson Technology, Inc. reserves the right to make design changes without notice.

All sales are subject to Johanson Technology, Inc. terms and conditions.



www.johansontechnology.com

931 Via Alondra • Camarillo, CA 93012 • TEL 805.389.1166 FAX 805.389.1821

2003 Johanson Technology, Inc. All Rights Reserved

"High Frequency Ceramic Solutions"

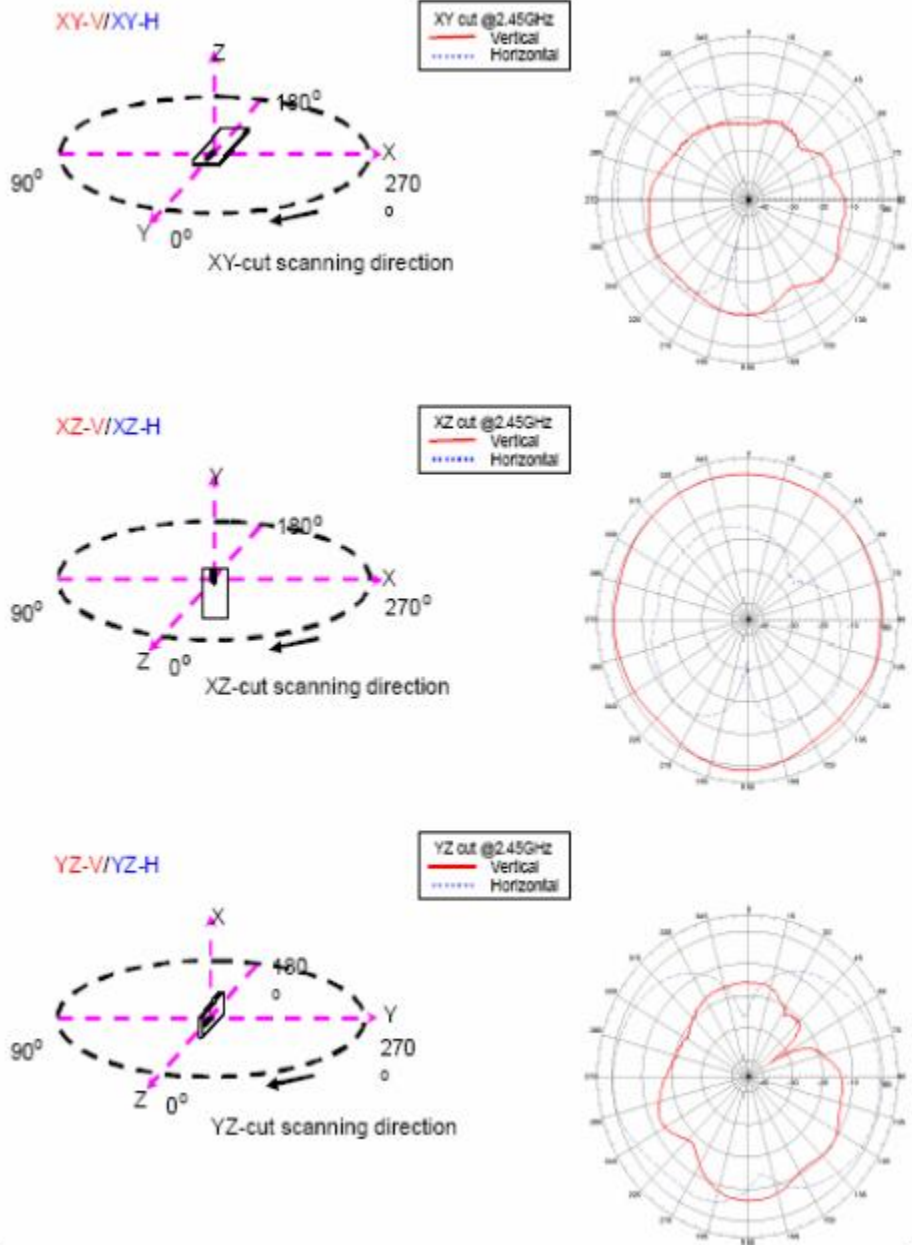
2450 MHz Antenna

Detail Specification: 04/26/06

P/N 2450AT43B100

Page 4 of 4

Typical Radiation Patterns



Johanson Technology, Inc. reserves the right to make design changes without notice.

All sales are subject to Johanson Technology, Inc. terms and conditions.



www.johansontechnology.com

931 Via Alondra • Camarillo, CA 93012 • TEL 805.389.1166 FAX 805.389.1821

2003 Johanson Technology, Inc. All Rights Reserved