



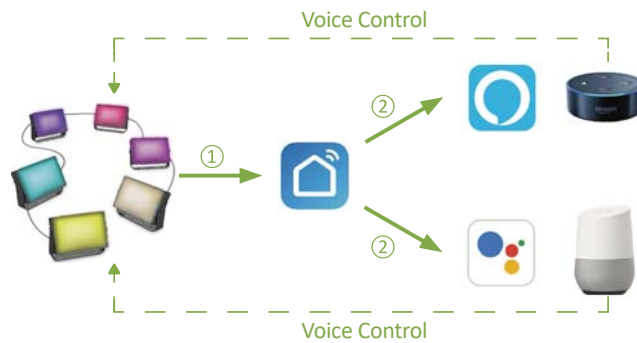
Usteller

Smart LED Flood Light User Guide

Manual Version: UT88875-RGBW / V1.0

Smart LED Flood Light User Guide

Before installation, let's know how the whole thing works.



- Step One: Install the smart flood light.
- Step Two: Fundamental set-up-Connect smart LED flood light to Smart Life App.
- Step Three & Four: Optional set-up - Connect Smart Life App to Amazon Alexa or Google Assistant.

After completing Step Two, you can remote control the light on Smart Life App. After completing Step Three and Four, you can voice control the light with Alexa or Google Assistant. This manual consists of Four parts.

- Part One - How to install the light ? 2 - 7
- Part Two - How to pair the light to Smart Life app? 8 - 13
- Part Three - How to control the light with Amazon Alexa? 14 - 16
- Part Four - How to control the light with Google Assistant? 17 - 18

Part One - How to insall the light?

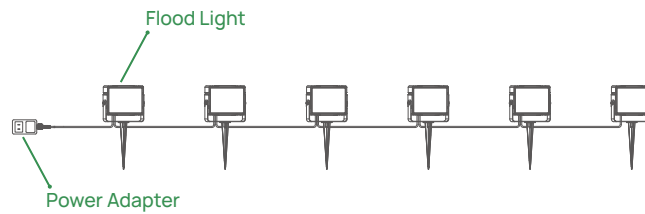
Warning

- (1) Please check if the light and the parts are intact before installation.
- (2) Make sure to cut off power before installation.
- (3) Please do not place this light in corrosive conditions.
- (4) If there is any damage to the cord, please cut off the power and stop using it immediately.
- (5) Please do not retrofit the light within the warranty period.
- (6) To ensure the light works properly, please use the voltage indicated on the packing.






1. Parameters

Model	UT88875
Total Wattage	40W
Max Luminous Flux	4000lm
Input Voltage	AC120V
Color	RGB, Warm White
Color Temperature	2700K
Frequency	50/60Hz
Waterproof Rating	Flood Lights IP66 Power Adapter IP44
Bean Angle	120°
Working temperature	-20~40°C

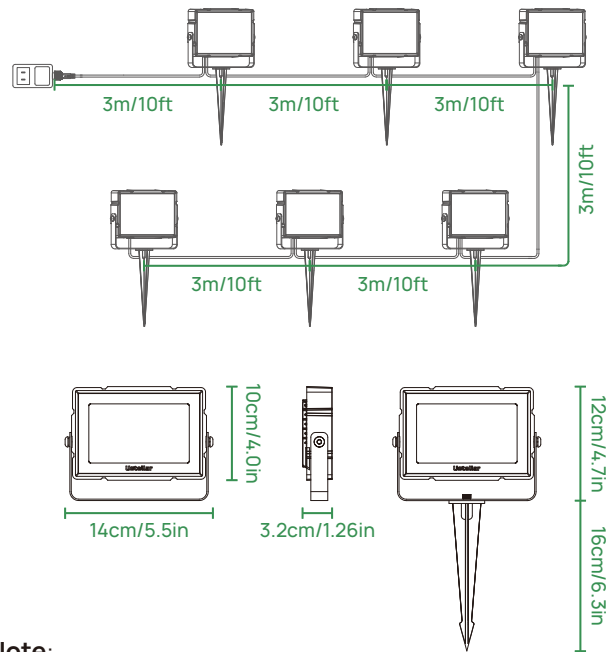
2. Components



Package Includes:

Flood Lights	x 6	
Power Adapter	x 1	
Ground Sticks	x 6	
Screws	x 7	
L Shaped Hex Key Wrench	x 1	
User Manual	x 1	

3. Dimension



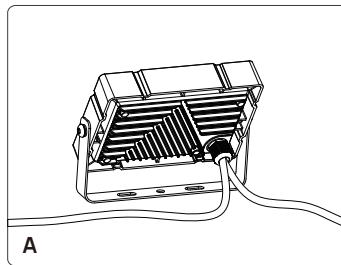
Note:

1. The flood lights and cables can not be extended, Do not cut the cable.
2. Use this product with the provided power adapter only.
3. The power adapter is IP44 grade waterproof, which can not be directly used outdoor. Please connect to a indoor socket, or use a waterproof box.
4. The flood lights are IP66 grade waterproof, which can be used outdoor. But do not immerse the lights in water.

4. Installation

Scenario 1:

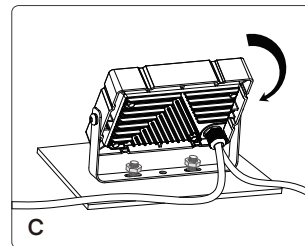
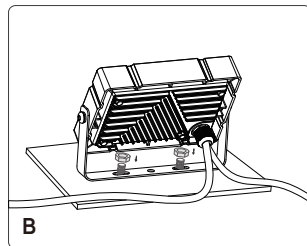
Step A: According to the spacing of two screw bits on the bracket, drill two holes on the mounting panel.



Note: Maximum mounting height is over 5m.

Step B: Aim the bracket at the holes and fix it with two bolts (not included).

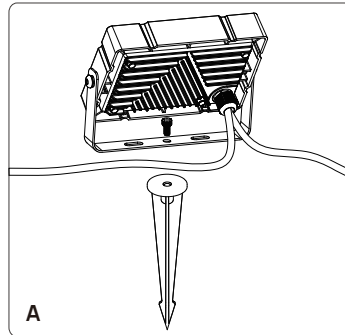
Step C: Adjust the lighting direction up or down as per your need and plug in to power the light on.



English

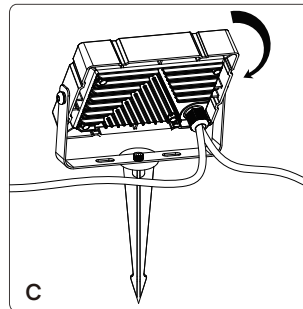
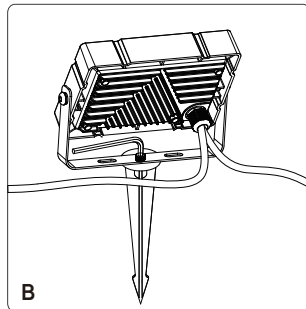
Scenario 2:

Step A: Attach the ground stick to the Flood light, with the screw provided in the package.



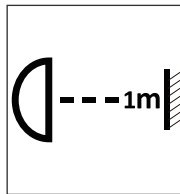
Step B: Tighten the screw with the Hex Key Wrench.

Step C: Adjust the lighting direction up or down as per your need and plug in to power the light on.



Note:

01



01 Make sure that the distance between the light and the object being lit is more than 1 meter, so as to avoid high temperature caused by short distance.

The light source of this luminaire is not replaceable.

Limitation of Indoor and Outdoor Use

- (1) This light is waterproof and damp proof. It is protected against the rain, but it cannot be immersed in water.
- (2) The mounting position of this light should be able to bear at least 10 times as heavy as the light.
- (3) This light should be used in condition that is good for heat dissipation. Its working temperature should be less than 45°C Too high the working temperature will cause serious lumen depression and affect lifespan of the light.

FCC ID: 2AWONUT88875

This device complies with part 15 of the FCC rules. Operation is subject to the following two conditions: (1) this device may not cause harmful interference, and (2) this device must accept any interference received, including interference that may cause undesired operation.

This equipment complies with FCC radiation exposure limits set forth for an uncontrolled environment. This equipment should be installed and operated with minimum distance of 20 cm between the radiator and your body. This transmitter must not be co-located or operating in conjunction with any other antenna or transmitter.

English

Part Two - How to pair the light to Smart Life app?



Before starting the pairing, please make sure to turn on the Bluetooth and WiFi on your phone.

The smart light only supports 2.4GHz WiFi network, not 5.0GHz. Please make sure the working network is 2.4GHz, and your phone is connected to it. If your WiFi router supports both 2.4GHz and 5.0GHz, please separate the two frequency bands in the router settings, and select the 2.4GHz for connection.

The WiFi signal receiving module is built in the first flood light head (the one close to the power adapter). The maximum wireless connection distance is up to 65ft/20m.

Step A : Smart Life app installation

Please choose either way below to download and install the app.

(1) As per your phone system, choose the QR code to scan.



iOS



Android

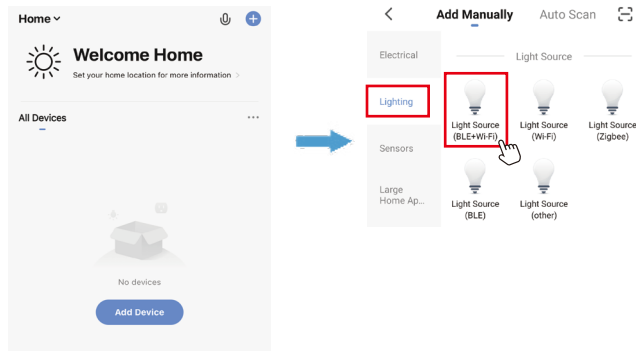
(2) Search keyword 'Smart Life' in Apple Store or Google Play.

Step B: Create an account on Smart Life and login.

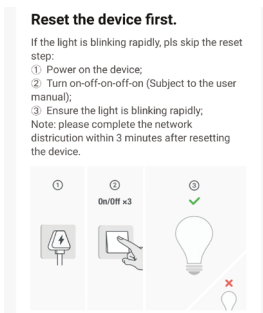
Note: Please keep your account and password in mind for Alexa or Google Assistant App pairing later.

Step C : Add the light to Smart Life App

1. Tap '+' button on top right corner to add devices. Tap 'Lighting', then choose 'PIR Light (BLE+Wi-Fi)' to add the lights.

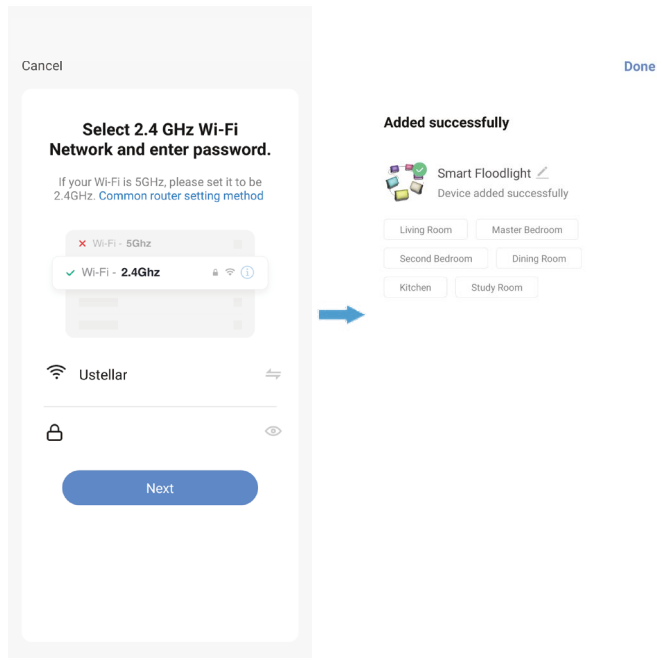


2. Power on the light with your own switch. Repeatedly turn on-off-on-off-on switch (3 times) to activate the light into rapid blinking status (about 0.5s per blink). Please make sure to keep an interval over 2 seconds between each turn-on and turn-off. Then click the 'Next' button on this page. Find the lighting devices and click '+'.
Reset the device first.



English

3. Choose your WiFi network, enter your password, and tap the 'Next' button. Then give a name to the light and tap the 'Done' button.



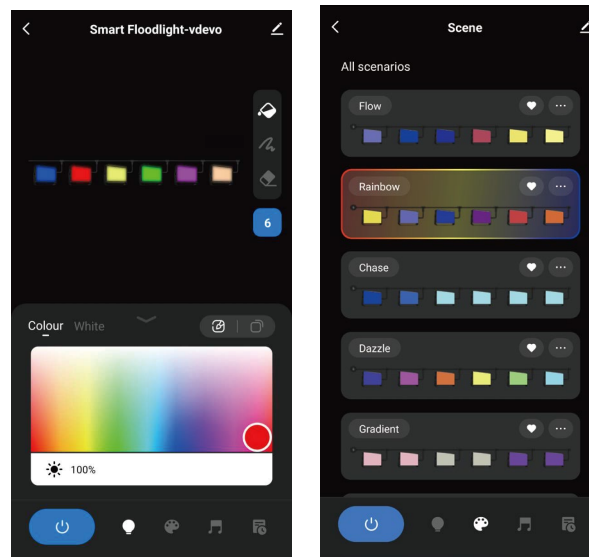
English

Step D : Give a name to the light.

- A simple name is recommended for easier voice recognition with Alexa or Google Assistant.
- The name given to the light will be the same for voice control on Alexa or Google Assistant.

Step E : Control the lights.

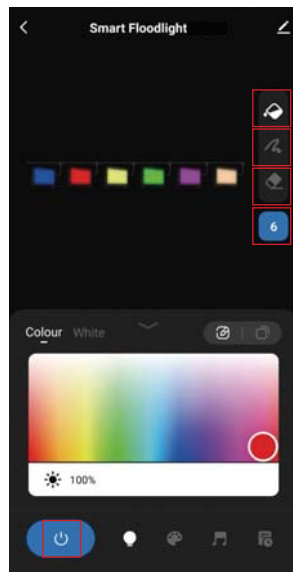
The named light will be shown on the app homepage. Now you can control the light (turn on/off, change colors, adjust brightness ect) with Smart Life on the setting page.



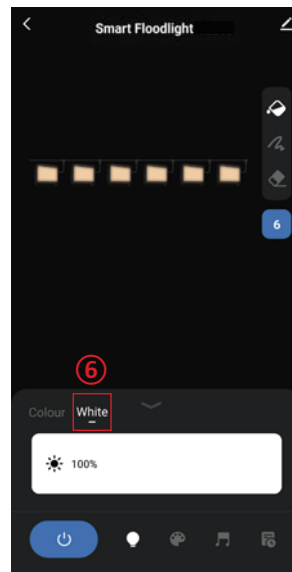
English

Tips:

- ① This button sets the number of flood lights, please click and set to '6'.
- ② Click the '🔄' button, and select the color in the color plate, the color of all the flood lights will be changed at the same time.
- ③ Click the '🔍' button, select the color in the color plate, and select the flood light you want, the color will be changed separately.
- ④ Click the '📺' button, and select the flood light, the flood light will be turn off separately.
- ⑤ Click the '🔌' button, all the flood lights will be turn on/off at the same time.
- ⑥ Click the 'White' tab, you can set the flood lights to warm white and adjust the brightness.



②
③
④
①



⑥

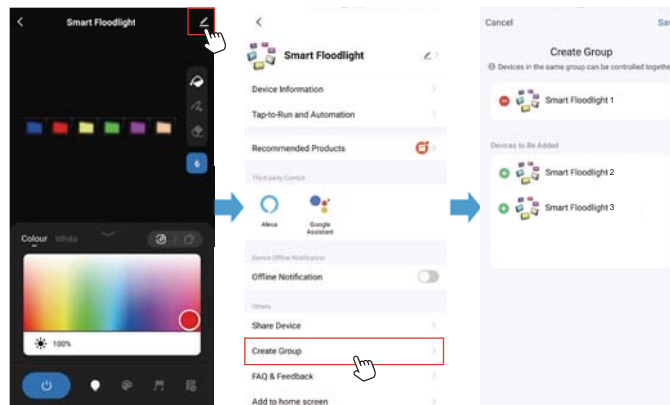
⑤

How to group the lights?

Make sure all the lights have been paired to "smart life" app, then group the lights by following these steps.

1. Choose any light on the app, click the edit button on the top right corner, then click "Create Group" .
2. Choose the lights you want to group from the device list and rename the group.

Now you can control the lights and sync with the music, the colors will be synchronized in the group.

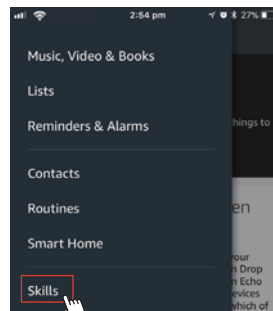
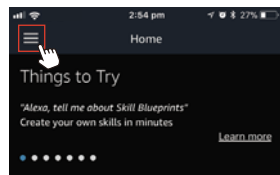


Part Three – How to control the light with Amazon Alexa?



Please make sure that your Alexa app is connected to Echo, and both work well under your WiFi network.

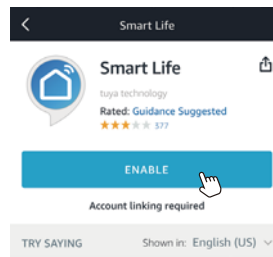
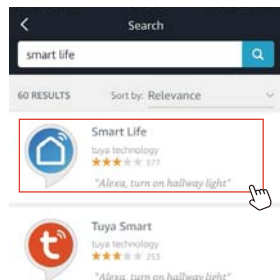
Step A: Log in your Alexa App, tap top left corner, and tap 'Skills'.



Your Alexa settings have been updated

Household Drop In was enabled from one of your Echo devices or from the Alexa app. The opt-in Drop In feature lets you automatically connect to an Echo device for a voice or a video chat. Your Echo devices with a screen and the Alexa app will indicate which of

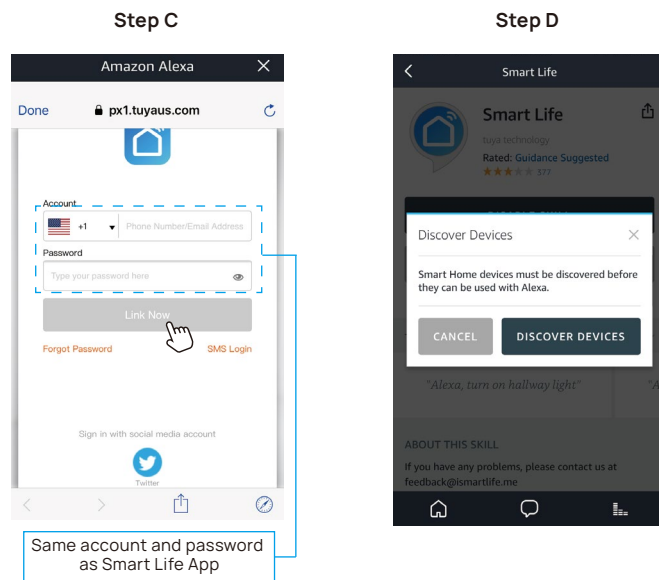
Step B: Type 'Smart Life', find 'Smart Life' from the search result and tap it to enable the skill.



English

Step C: Enter your Smart Life App account and password. Tap 'Link Now', then tap 'Authorize' on the next page to bind Smart Life account to Alexa.

Step D: When your Smart Life account is bound to Alexa, tap 'DISCOVER DEVICES' to detect the light.

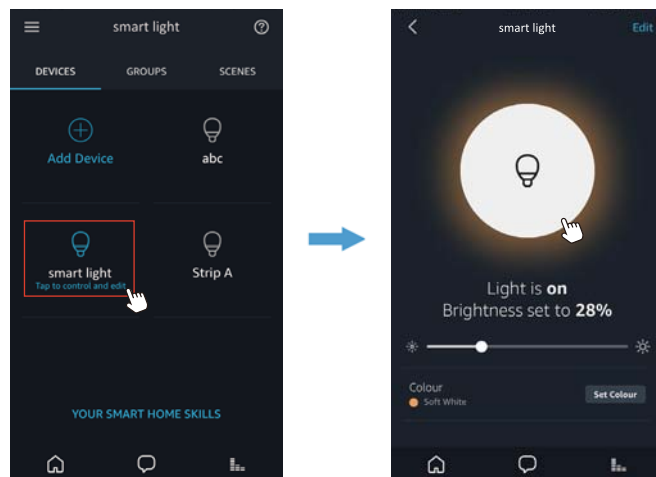


Step E: When the named light is paired to Alexa from Smart Life, it will show on the device page (see the 'smart light' example).

English

Step F: Now you can control the light with Alexa App on the setting page. To turn on or off the light, simply tap the bulb icon.

Step G: You can also voice control the light with Alexa by giving these commands: "Alexa, turn on 'device name'", "Alexa, set 'device name' to 'color'", "Alexa, set 'device name' to 'number'". Device name is the one you give to the light. The light is named 'smart light' in this user guide. For example, "Alexa, turn on 'smart light'", "Alexa, set 'smart light' to 'blue'" etc.



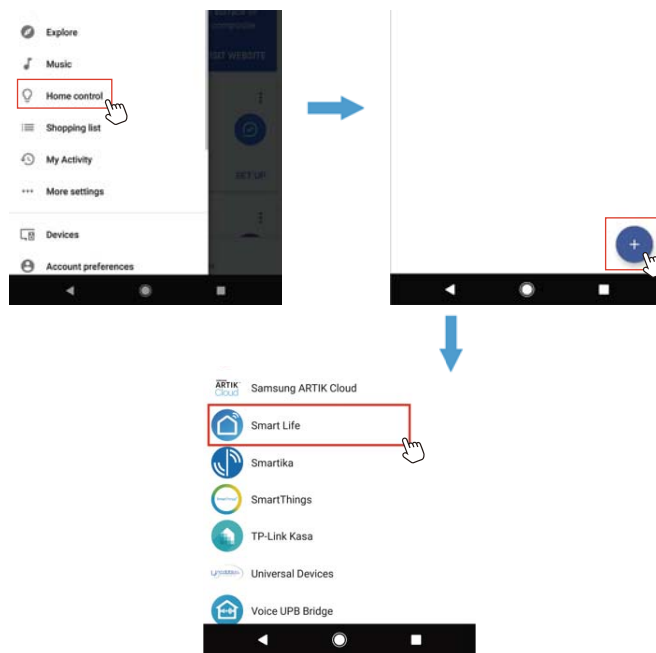
Note: To control the light with Google Assistant, please continue to read Part Four.

Part Four – How to control the light with Google Assistant?

Step A: Login Google Assistant App, tap 'Home Control' on the left side bar page.

Step B: Tap '+' button on the bottom right to enter next page.

Step C: Find 'Smart Life' from side bar list.



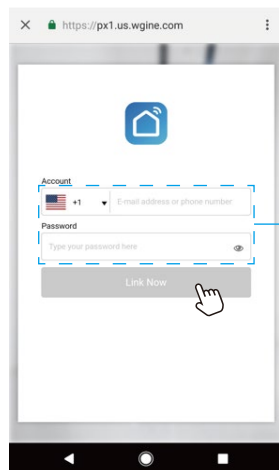
English

Step D: Enter your Smart Life App account and password to bind Smart Life account to Google Assistant.

Step E: You will find the named light shows on the Home Control page. Now you can control the light on Google Assistant App, or voice control it by giving these commands: "ok Google, turn on 'device name'", "ok Google, set 'device name' 'to color'", "ok Google, set 'device name' to 'number'".

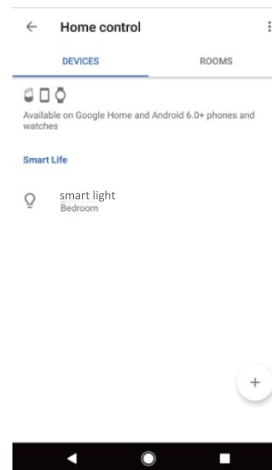
Device name is the one you give to the light. The light is named 'smart light' in this user guide. For example, "ok Google, turn on 'smart light'", "ok Google, set 'smart light' to 'blue'" etc.

Step D



Same account and password
as Smart Life App

Step E



English

Any changes or modifications not expressly approved by the party responsible for compliance could void the user's authority to operate the equipment. This equipment has been tested and found to comply with the limits for a Class B digital device, pursuant to part 15 of the FCC Rules. These limits are designed to provide reasonable protection against harmful interference in a residential installation. This equipment generates, uses and can radiate radio frequency energy and, if not installed and used in accordance with the instructions, may cause harmful interference to radio communications. However, there is no guarantee that interference will not occur in a particular installation. If this equipment does cause harmful interference to radio or television reception, which can be determined by turning the equipment off and on, the user is encouraged to try to correct the interference by one or more of the following measures:

- Reorient or relocate the receiving antenna.
- Increase the separation between the equipment and receiver.
- Connect the equipment into an outlet on a circuit different from that to which the receiver is connected.
- Consult the dealer or an experienced radio/TV technician for help.

Contact Us

Have some issue? No worries! Please reach us via these channels.
Our customer services team is more than happy to help.

 www.ustellar.com

 support@ustellar.com

Manufacturer: Shenzhen Ustellar Technology Ltd.
(shen zhen shi you shi tuo ke ji you xian gong si)
Address: Rm.C306, 3/F,C Bldg., Youth Entrepreneur Hub, Jianshe East Road, Qinghua Community, Longhua ,Shenzhen,China



Ustellar

E-manual



Step 1: Scan the QR code

Step 2: Click E-manual PDF file

Step 3: Read file online or download

 Go paper-free, make life easier, and do something good for the environment.



MADE IN CHINA

