

The background features decorative curved lines in green and grey. A thick grey curve starts from the top left and curves downwards towards the right. A thinner green curve follows a similar path below the grey one. Another thick grey curve starts from the bottom right and curves upwards towards the left. A thinner green curve follows a similar path above the grey one.

novostella

## Smart LED Flood Light User Guide

## Contact Us

Have some issue? No worries! Please reach us via these channels.  
Our customer services team is more than happy to help.



***support@novostella.net***



***www.novostella.net***



We are social. Get connected!



@Novostella\_US



@novostella\_official



@novostella\_official



fb.com/novostella.fans



@Novostella\_official

Thank you for ordering from Novostella. Set-up is easy and takes only a few minutes by following the instructions.

## Part One

How to install the light? .....1-5

## Part Two

How to pair the light to Smart Life app? .....6-9

## Part Three

How to connect the lights to Internet, and control with Amazon Alexa and Google Assistant? .....10-18

# Part One - How to install the light?

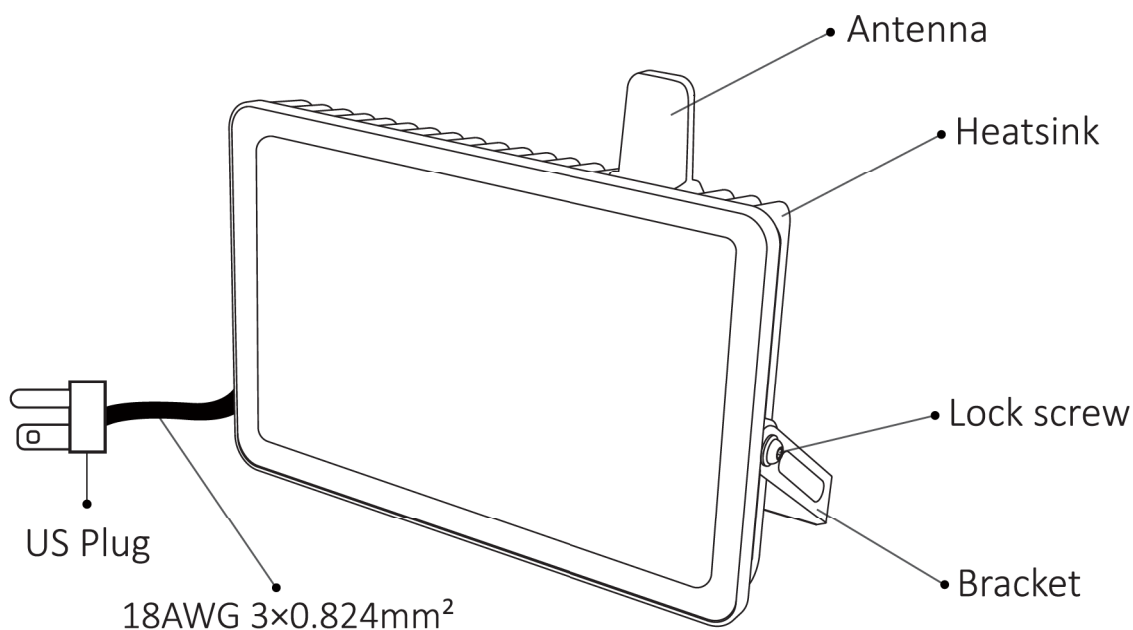
## Warning

- (1) Please check if the light and the parts are intact before installation.
- (2) Make sure to cut off power before installation.
- (3) Please do not place this light in corrosive conditions.
- (4) If there is any damage to the cord, please cut off the power and stop using it immediately.
- (5) Please do not retrofit the light within the warranty period.
- (6) To ensure the light works properly, please use the voltage indicated on the packing.

## 1. Parameters

Model	NTF91	NTF92
Wattage	60W	100W
Input Voltage	US: 100-120V AC	
Color	US: RGB, Cool White, Warm White	
Frequency	50/60Hz	
Waterproof Rating	IP66	
Beam Angle	120°	
Working temperature	-20~40°C	

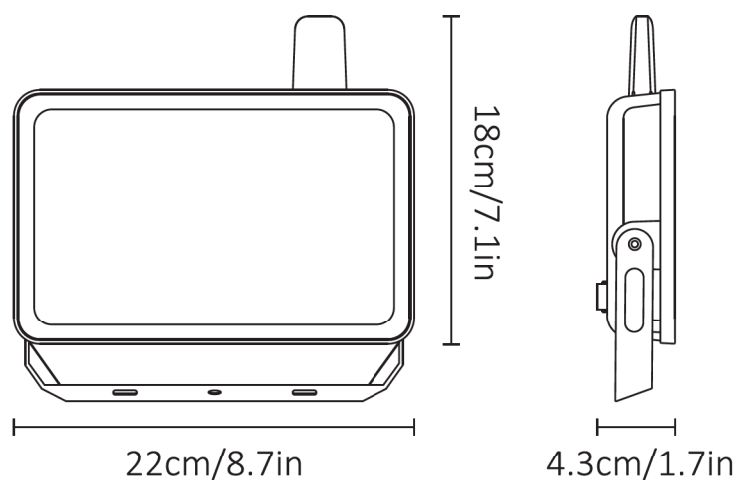
## 2. Components



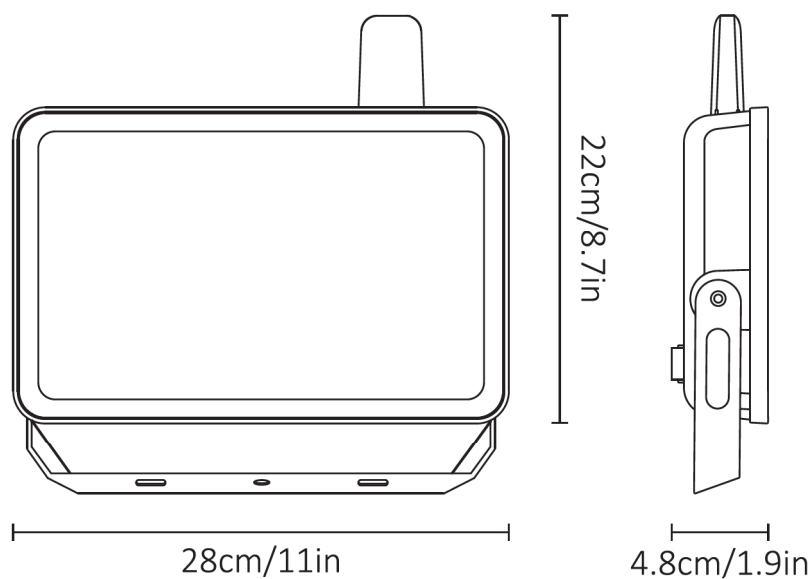
Note: Cord - type Y attachment.

For type Y attachment: If the external flexible cable or cord of this luminaire is damaged, it shall be exclusively replaced by the manufacturer or his service agent or a similar qualified person in order to avoid a hazard.

## 3. Dimension



NTF91  
Weight: 1.87lb/0.85kg  
Max Projected Area: 50m<sup>2</sup>



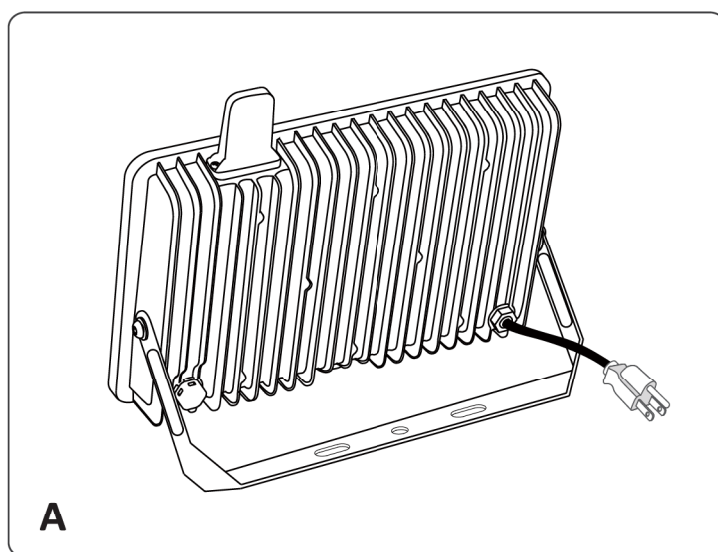
NTF92

Weight: 2.91lb/1.32kg

Max Projected Area: 80m²

## 4. Installation

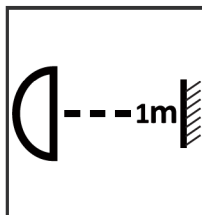
**Step A:** According to the spacing of two screw bits on the bracket, drill two holes on the mounting panel.



Note: Maximum mounting height is over 5m.

**Note:**

01



01 Make sure that the distance between the light and the object being lit is more than 1 meter, so as to avoid high temperature caused by short distance.

**FCC ID: 2AWONNTF92**

Federal Communication Commission(FCC)Statement for Users Warning:  
Changes or modifications not expressly approved by the party responsible for compliance could void the user's authority to operate the equipment.

This device complies with part 15 of the FCC Rules.

Operation is subject to the following two conditions:

- (1) This device may not cause harmful interference, and
- (2) this device must accept any interference received, including interference that may cause undesired operation.

This equipment complies with FCC radiation exposure limits set forth for an uncontrolled environment.

NOTE: This equipment has been tested and found to comply with the limits for a Class B digital device, pursuant to part 15 of the FCC Rules. These limits are designed to provide reasonable protection against harmful interference in a residential installation. This equipment generates, uses and can radiate radio frequency energy and, if not installed and used in accordance with the instructions, may cause harmful interference to radio communications.

However, there is no guarantee that interference will not occur in a particular installation. If this equipment does cause harmful interference to radio or television reception, which can be determined by turning the equipment off and on, the user is encouraged to try to correct the interference by one or more of the following measures:

- Reorient or relocate the receiving antenna.
- Increase the separation between the equipment and receiver.
- Connect the equipment into an outlet on a circuit different from that to which the receiver is connected.
- Consult the dealer or an experienced radio/TV technician for help.

## Part Two - How to pair the light to Smart Life app?



Before starting the pairing, please make sure to turn on the Bluetooth on your phone, and connect to the Internet.

### Step A: Smart Life app installation

Please choose either way below to download and install the app.

(1) As per your phone system, choose the QR code to scan.



iOS



Android

(2) Search keyword 'Smart Life' in Apple Store or Google Play.

### Step B: Create an account on Smart Life and login.

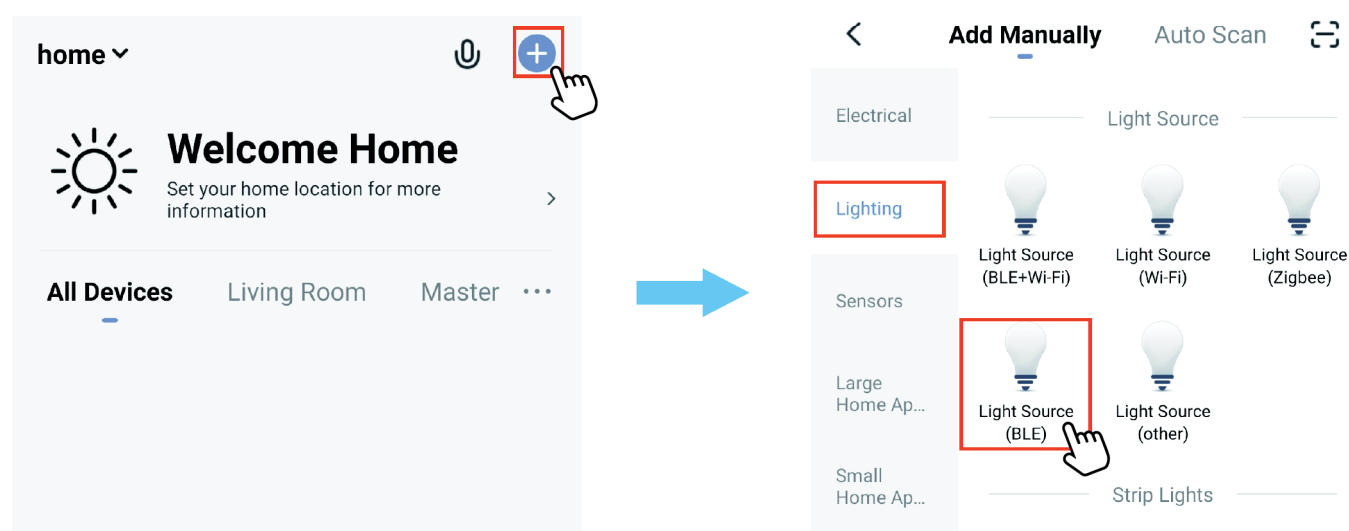
Note: Please keep your account and password in mind for Alexa or Google Assistant APP pairing later.

#### RF Exposure Information

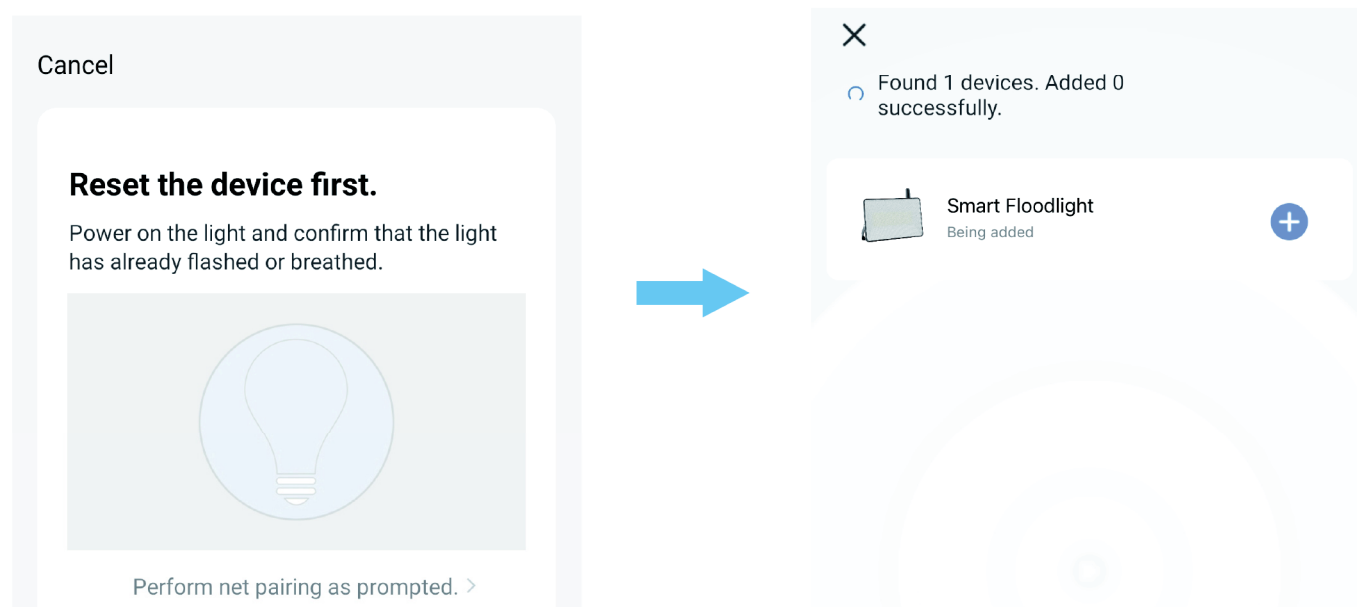
This equipment complies with FCC radiation exposure limits set forth for an uncontrolled environment. This equipment should be installed and operated with minimum distance 20cm between the radiator and your body.

**Step C : Add the light to Smart Life App**

1. Tap '+' button on top right corner to add devices. Tap 'Lighting', then choose 'Light Source (BLE)' to add the lights.



2. Power on the light with your own switch. Repeatedly turn on-off-on-off-on-off-on switch to activate the light into rapid blinking status (about 0.5s per blink). Please make sure to keep an interval over 2 seconds between each turn-on and turn-off. Then click the 'Next' button on this page. Find the lighting devices and click '+'.>

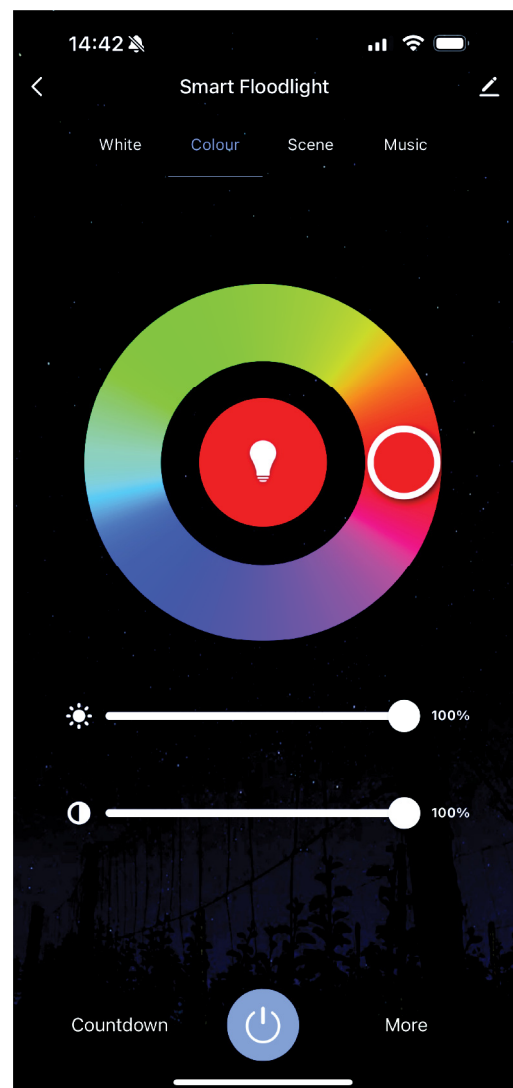
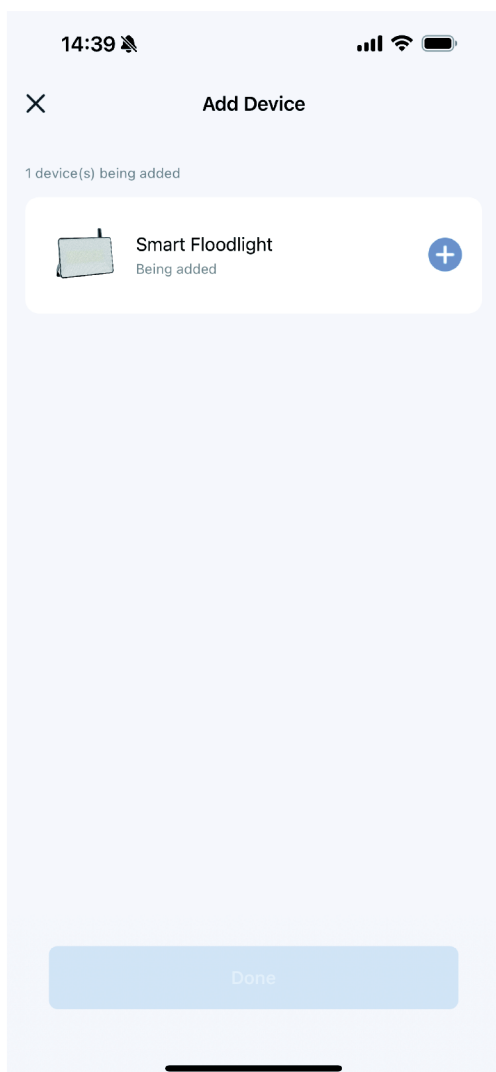




3. Give a name to the light.

Note: A simple name is recommended.

4. The named light will be shown on the app homepage. Now you can control the light (turn on/off, change colors, adjust brightness ect.) with Smart Life on the setting page. Turn on or off the light by tapping the bulb icon.

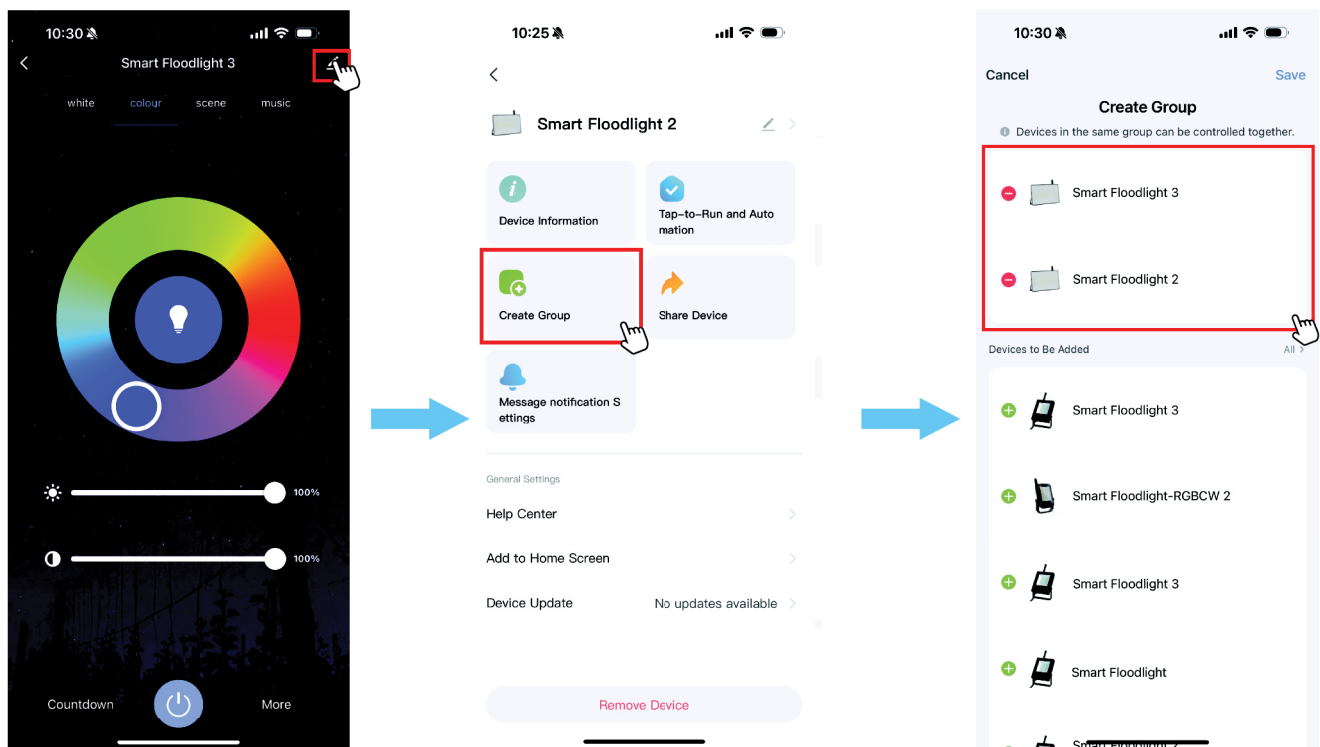


## How to group the lights?

Make sure all the lights have been paired to “Smart Life” app, then group the lights by following these steps.

1. Choose any light on the app, click the edit button on the top right corner, then click “Create Group” .
2. Choose the lights you want to group from the device list and rename the group.

Now you can control the lights and sync with the music, the colors will be synchronized in the group.



## Part Three – How to connect the lights to Internet, and control with Amazon Alexa and Google Assistant?

If you want to connect the lights to Internet, and control with Amazon Alexa and Google Assistant, you can easily expand the smart flood lights with our Hub accessory (sold separately).

Please click below link to purchase the Hub accessory from our shop:

<https://www.amazon.com/dp/B08WXBLN3G>

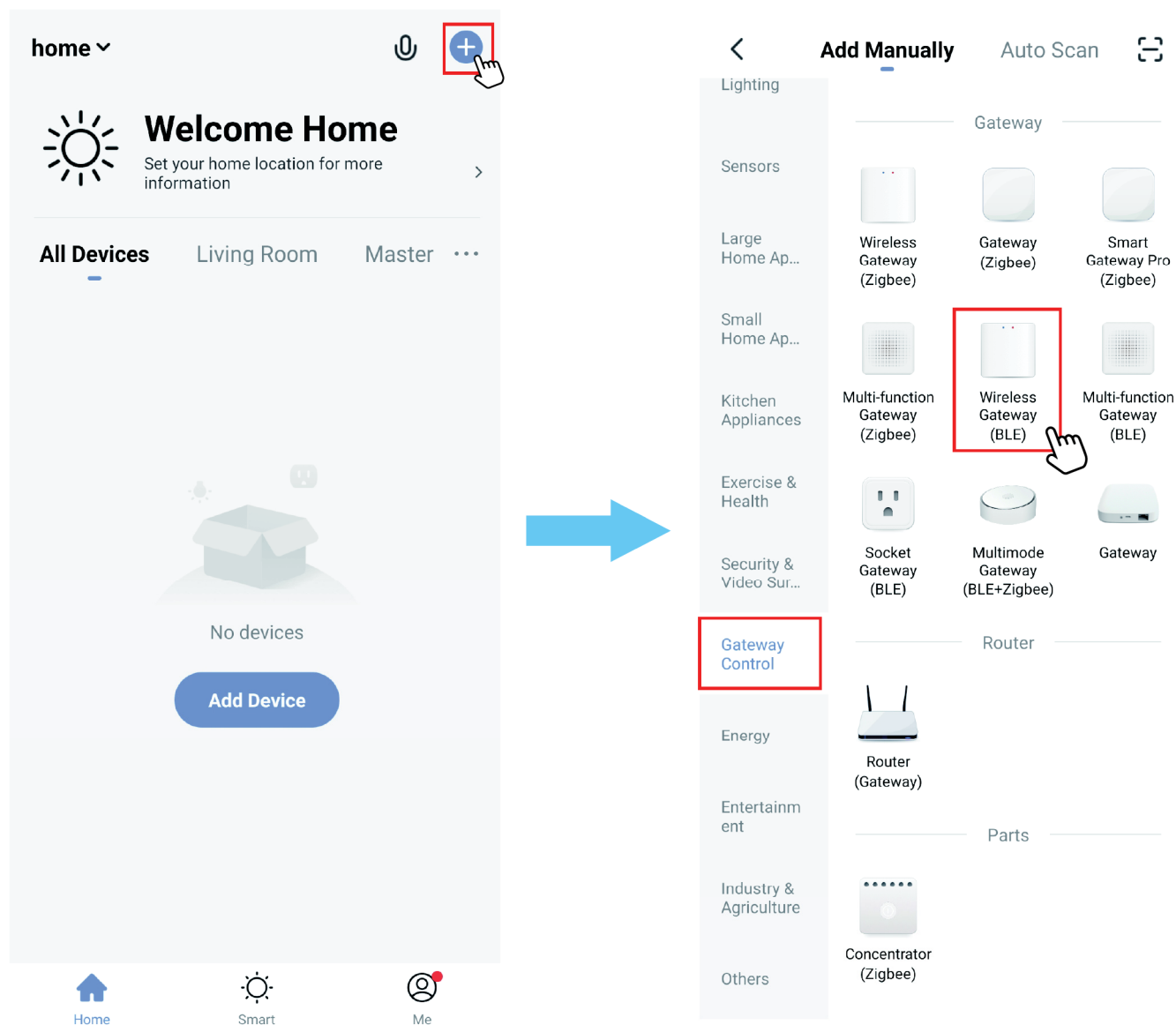
After you get the Hub accessory, please follow below steps to setup:

**Step A:** WiFi connection, pair the Hub to Smart Life App.

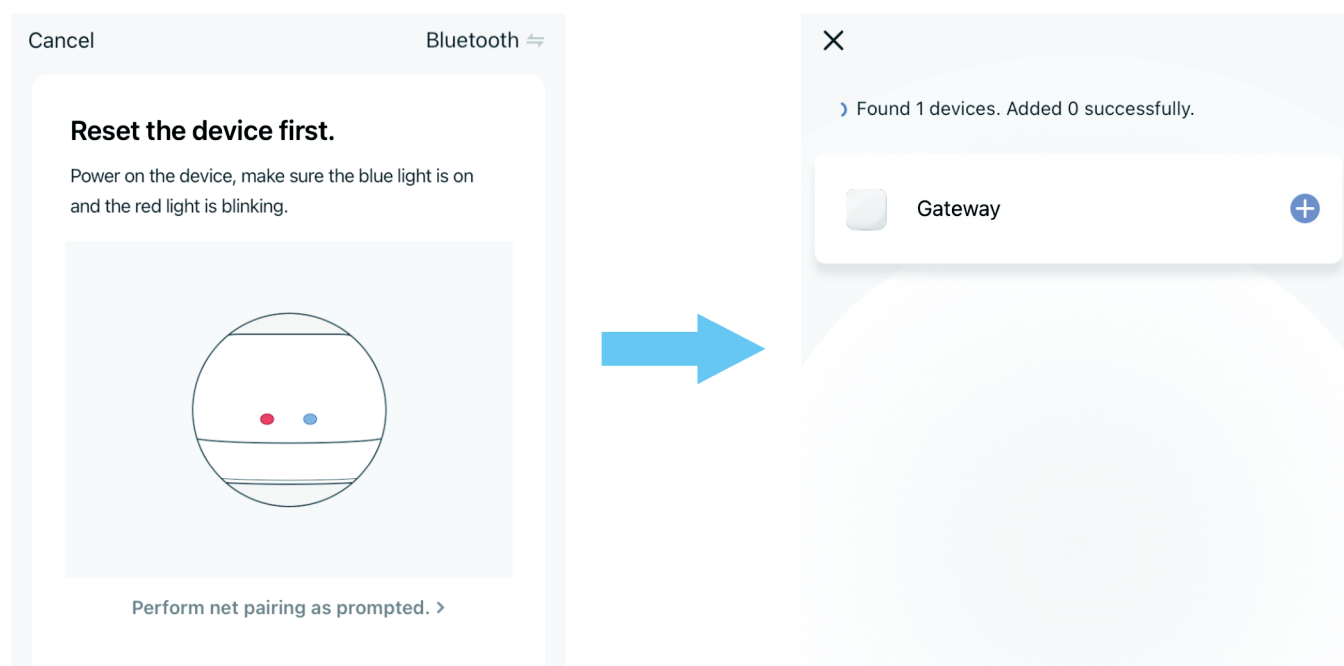
Please turn on the WiFi on your phone. The hub only supports 2.4GHz WiFi network, not 5.0GHz. Please make sure your working network is 2.4GHz and your router has disabled the MAC filter.

**\*\*** It is strongly recommended to place the hub to somewhere that is between the lighting devices and the router, and make sure it responds well to the WiFi signal.

1. Tap '+' button on top right corner to add device. Tap 'Gateway Control', then choose 'Wireless Gateway (BLE)' to add the hub.



2. Plug the hub into a socket. Long press the power button on the hub till the indicator lights rapidly blink, tap the 'Next' button, then click '+' button to add the hub.

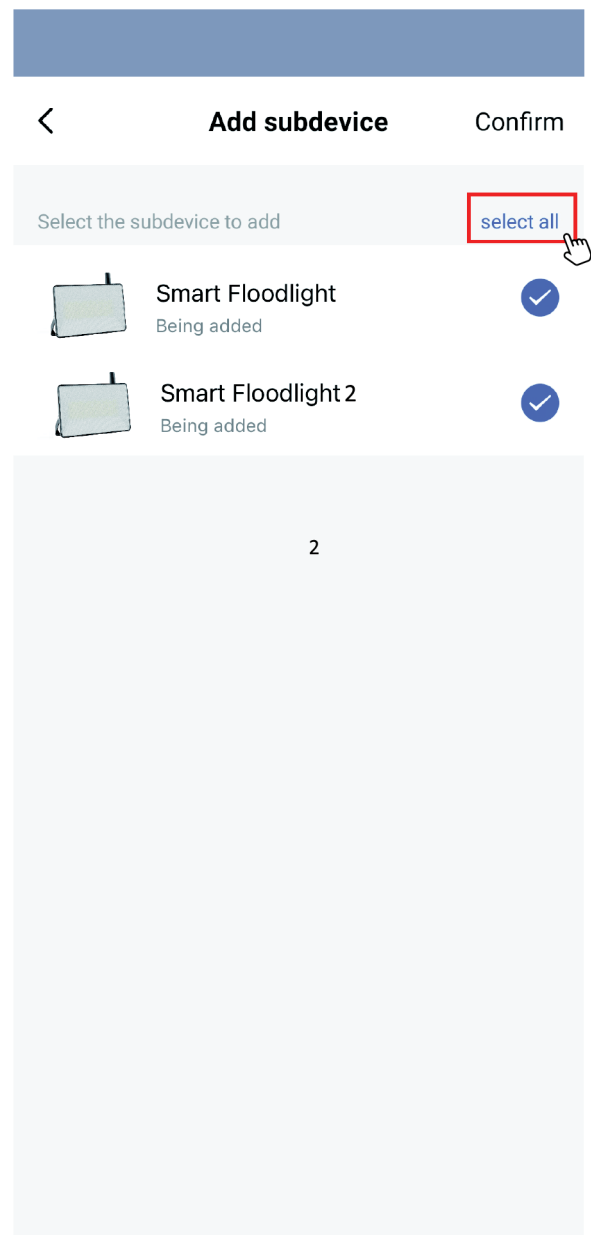
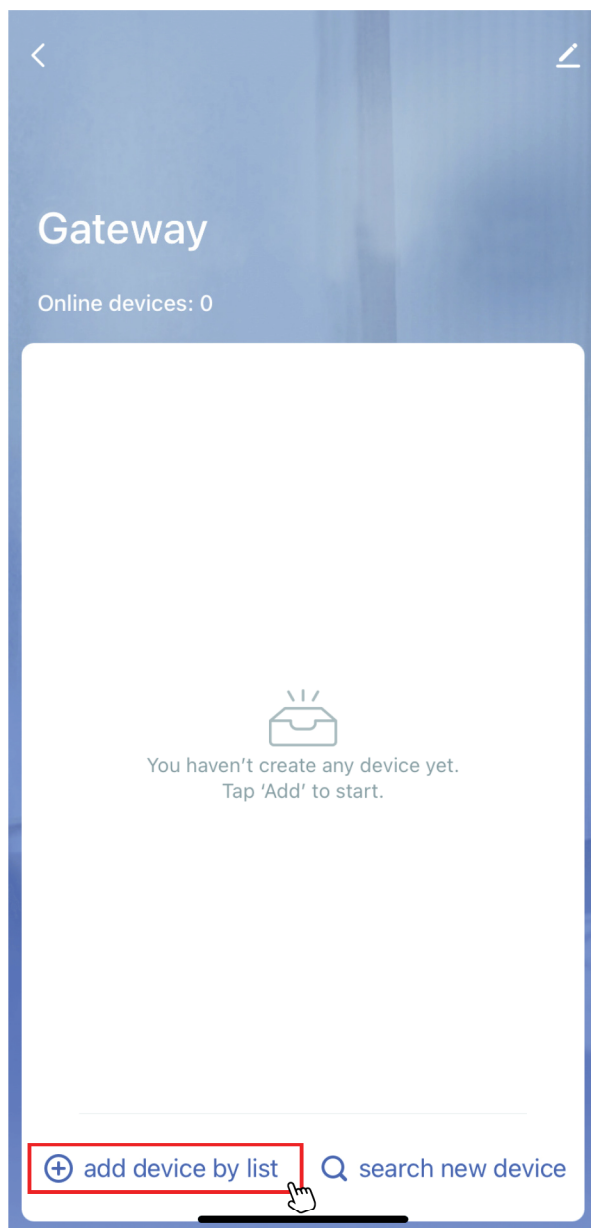


3. Choose your WiFi network, enter your password, and tap the 'Next' button. Give a name to the hub and tap the 'Done' button.



## Step B : Add the lights to the Hub.

Please make sure all the lights have been paired to 'Smart Life' App first. Choose the hub on the app, click the 'add device by list' button, select all the lights, and click the 'Confirm' button.

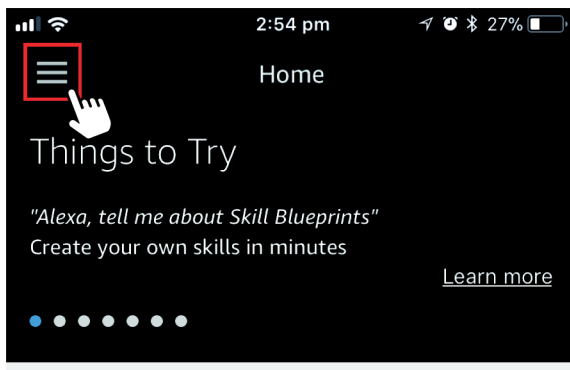


## How to control the light with Amazon Alexa?



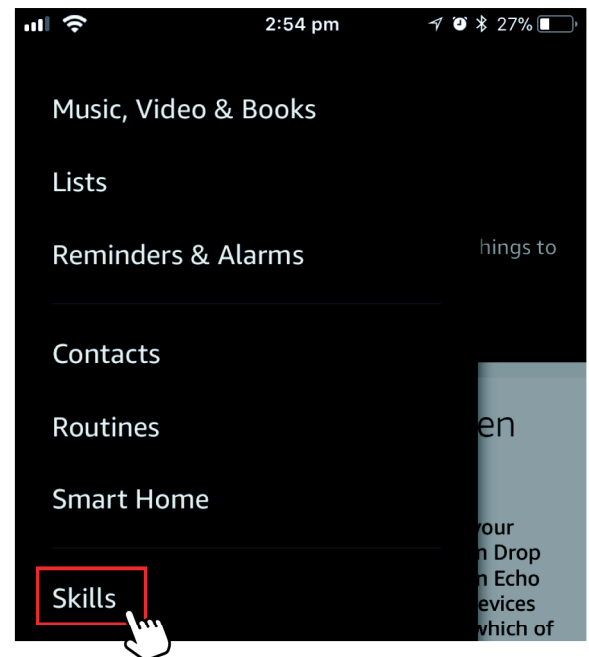
Please make sure that your Alexa app is connected to Echo, and both work well under your WiFi network.

**Step A :** Log in your Alexa App, tap top left corner, and tap 'Skills'.

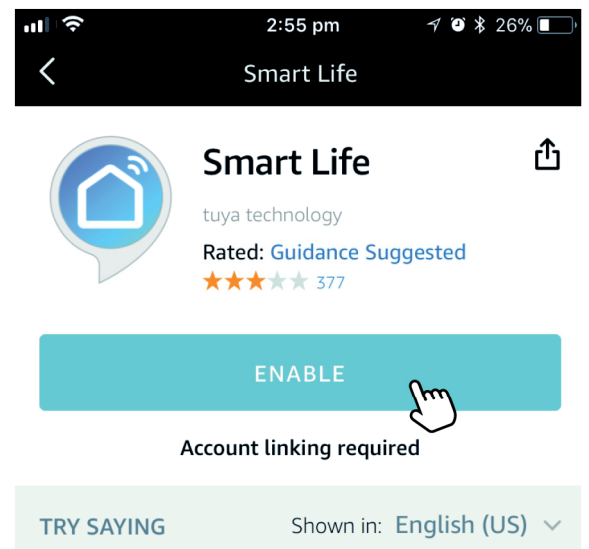
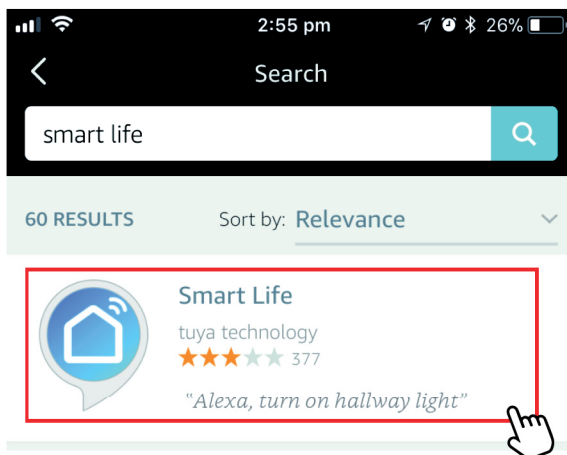


Your Alexa settings have been updated

Household Drop In was enabled from one of your Echo devices or from the Alexa app. The opt-in Drop In feature lets you automatically connect to an Echo device for a voice or a video chat. Your Echo devices with a screen and the Alexa app will indicate which of



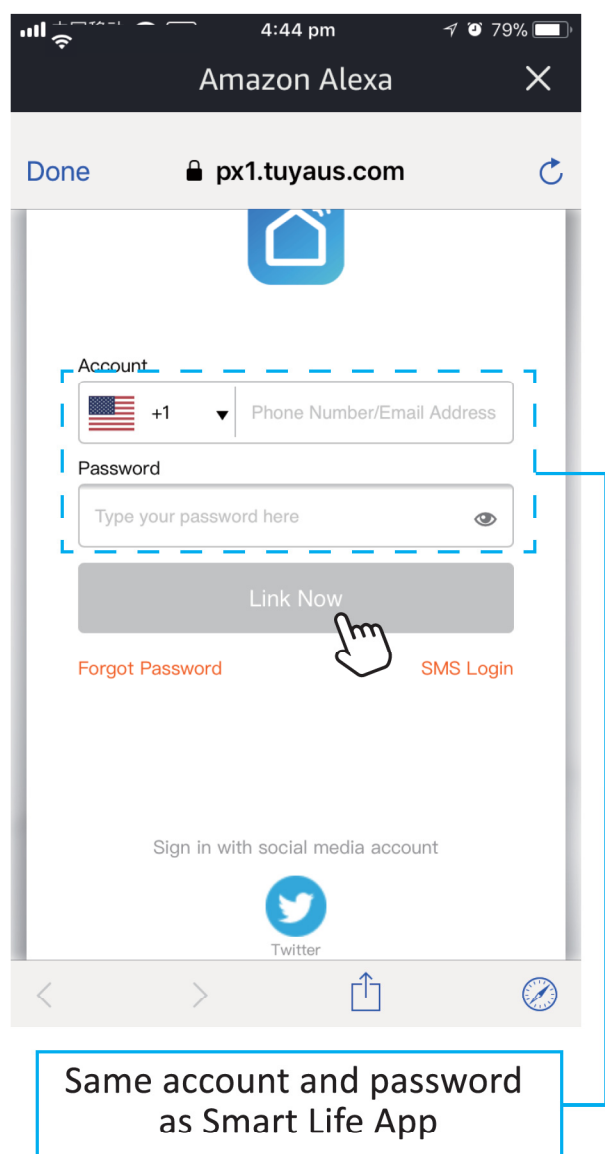
**Step B :** Type 'Smart Life', find 'Smart Life' from the search result and tap it to enable the skill.



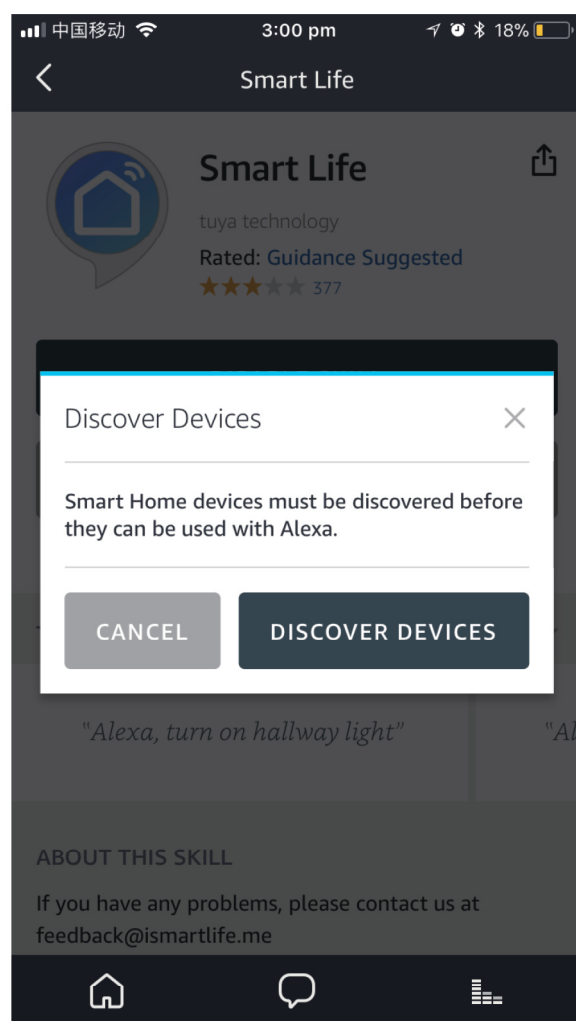
**Step C :** Enter your Smart Life App account and password. Tap 'Link Now', then tap 'Authorize' on the next page to bind Smart Life account to Alexa.

**Step D :** When your Smart Life account is bound to Alexa, tap 'DISCOVER DEVICES' to detect the light.

### Step C



### Step D

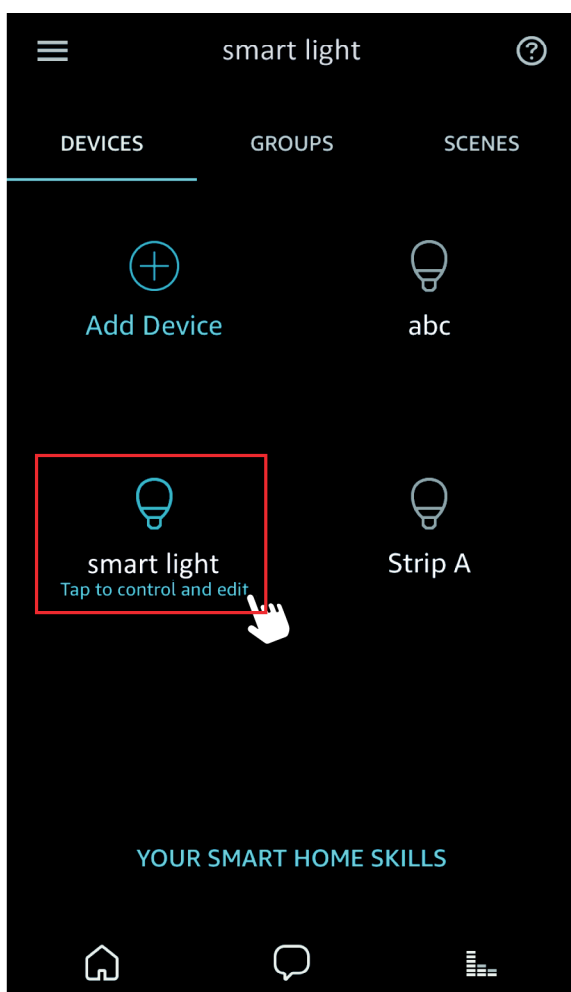


**Step E :** When the named light is paired to Alexa from Smart Life, it will show on the device page (see the 'smart light' example ).



**Step F :** Now you can control the light with Alexa App on the setting page. To turn on or off the light, simply tap the bulb icon.

**Step G :** You can also voice control the light with Alexa by giving these commands: “Alexa, turn on ‘device name’ ”, “Alexa, set ‘device name’ to ‘color’ ”, “Alexa, set ‘device name’ to ‘number’ ”. Device name is the one you give to the light. The light is named ‘smart light’ in this user guide. For example, “Alexa, turn on ‘smart light’ ”, “Alexa, set ‘smart light’ to ‘blue’ ” etc.



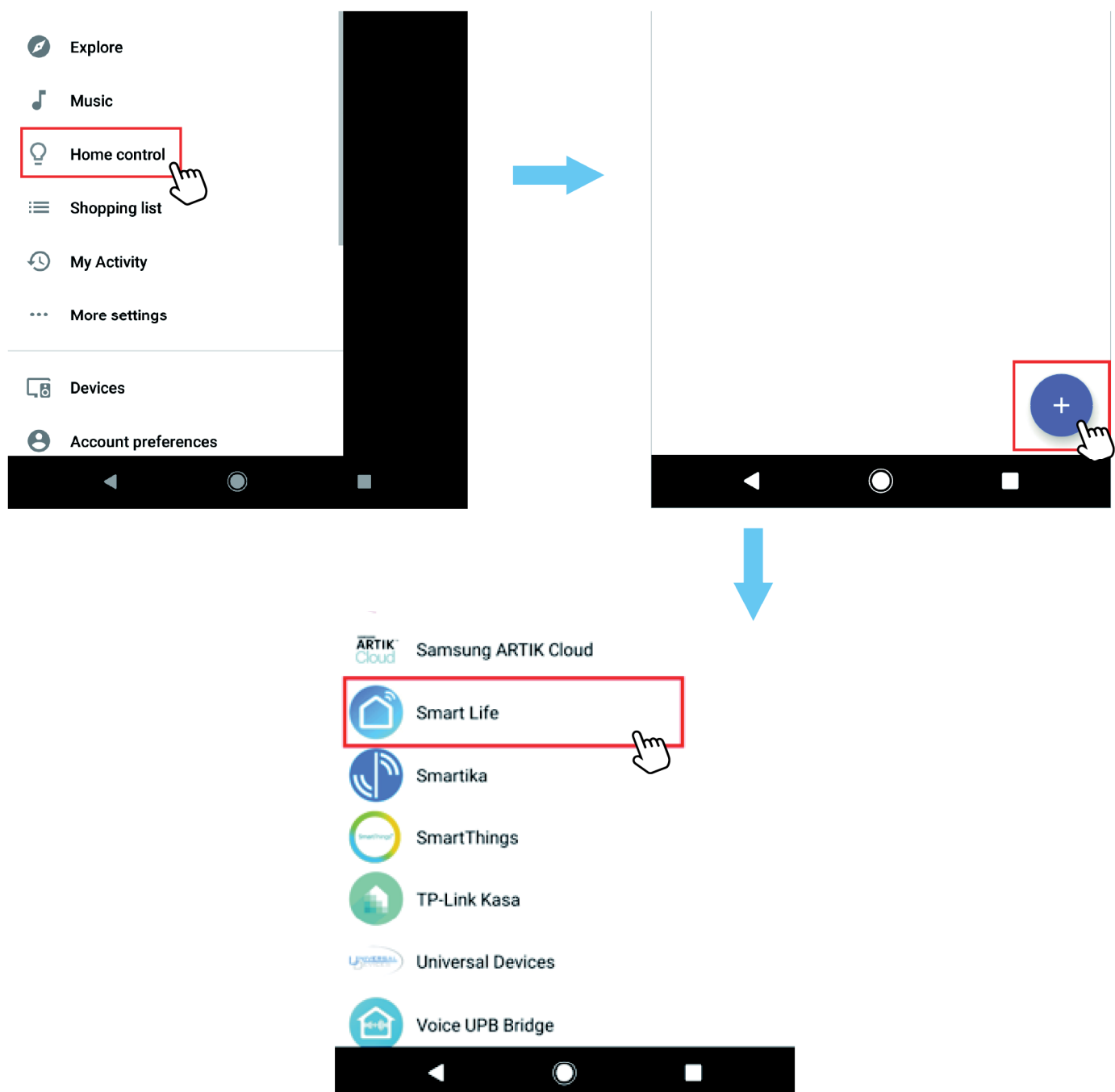


## How to control the light with Google Assistant?

**Step A :** Login Google Assistant App, tap 'Home Control' on the left side bar page.

**Step B :** Tap '+' button on the bottom right to enter next page.

**Step C :** Find 'Smart Life' from side bar list.



**Step D :** Enter your Smart Life App account and password to bind Smart Life account to Google Assistant.

**Step E :** You will find the named light shows on the Home Control page. Now you can control the light on Google Assistant App, or voice control it by giving these commands: “ok Google, turn on ‘device name’ ”, “ok Google, set ‘device name’ to ‘color’ ”, “ok Google, set ‘device name’ to ‘number’ ”.

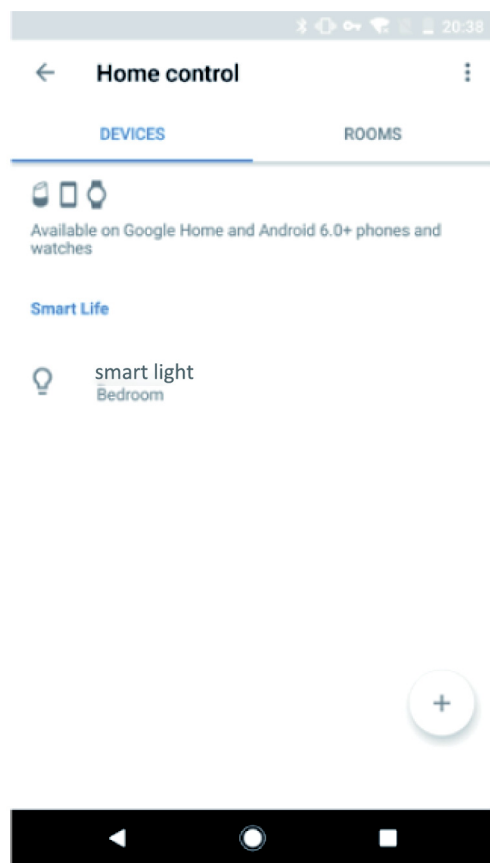
Device name is the one you give to the light. The light is named ‘smart light’ in this user guide. For example, “ok Google, turn on ‘smart light’ ”, “ok Google, set ‘smart light’ to ‘blue’ ” etc.

### Step D



Same account and password  
as Smart Life App

### Step E



Wireless Control Specification:  
Wireless Frequency Range: 2.4-2.4835 GHz  
Wireless Communications Protocol: BLE 5.0  
Wireless Conducted Power: 7 dBm

# novostella



Go paper-free, make life easier, and do something good for the environment.

□ FC IP66 (----1m|

MADE IN CHINA