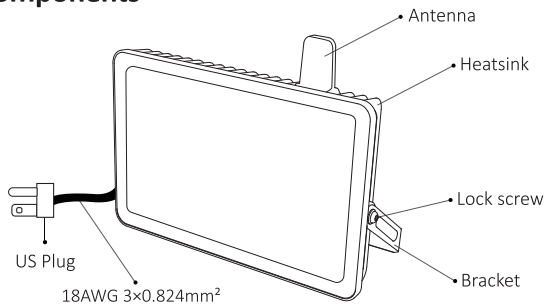


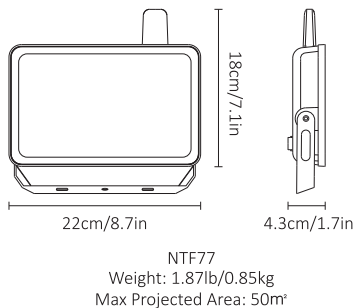
## 2. Components



Note: Cord - type Y attachment.

For type Y attachment: If the external flexible cable or cord of this luminaire is damaged, it shall be exclusively replaced by the manufacturer or his service agent or a similar qualified person in order to avoid a hazard.

## 3. Dimension

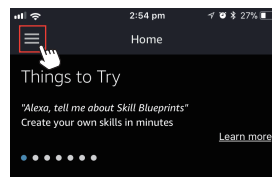


## Part Three – How to control the light with Amazon Alexa?



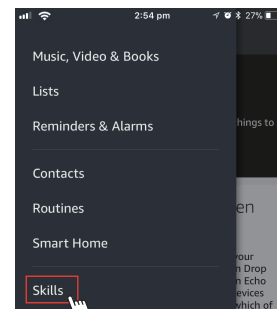
Please make sure that your Alexa app is connected to Echo, and both work well under your WiFi network.

**Step A :** Log in your Alexa App, tap top left corner, and tap 'Skills'.

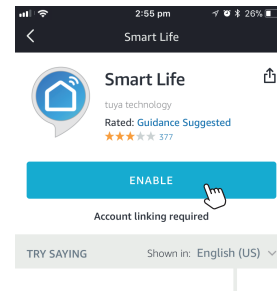
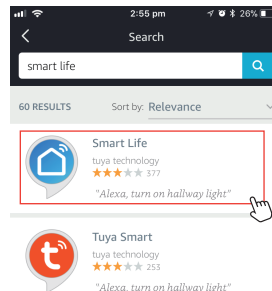


Your Alexa settings have been updated

Household Drop In was enabled from one of your Echo devices or from the Alexa app. The opt-in Drop In feature lets you automatically connect to an Echo device for a voice or a video chat. Your Echo devices with a screen and the Alexa app will indicate which of



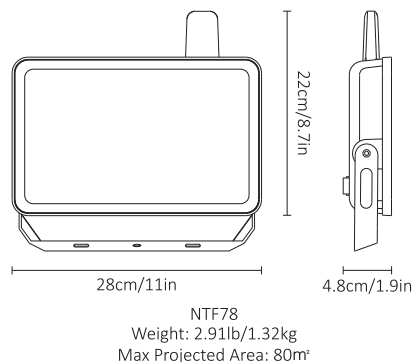
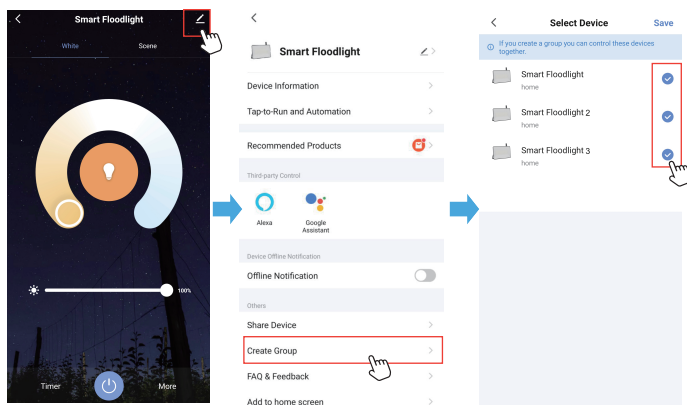
**Step B :** Type 'Smart Life', find 'Smart Life' from the search result and tap it to enable the skill.



## How to group the downlights?

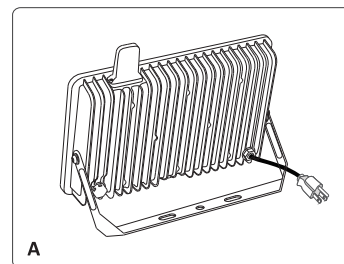
Make sure all the lights have been paired to “smart life” app, then group the lights by following these steps.

1. Choose any light on the app, click the edit button on the top right corner, then click “Create Group”.
2. Choose the lights you want to group from the device list and rename the group.



## 4. Installation

**Step A:** According to the spacing of two screw bits on the bracket, drill two holes on the mounting panel.



Note: Maximum mounting height is over 5m.