

novostella

E-manual



Step 1: Scan the QR code

Step 2: Click E-manual PDF file

Step 3: Read file online or download



Go paper-free, make life easier, and do something good for the environment.

IP66  

MADE IN CHINA

novostella

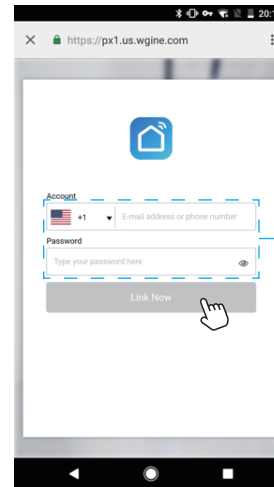
Smart LED Flood Light User Guide

Step D : Enter your Smart Life App account and password to bind Smart Life account to Google Assistant.

Step E : You will find the named light shows on the Home Control page. Now you can control the light on Google Assistant App, or voice control it by giving these commands: "ok Google, turn on 'device name' ", "ok Google, set 'device name' to 'color' ", "ok Google, set 'device name' to 'number' ".

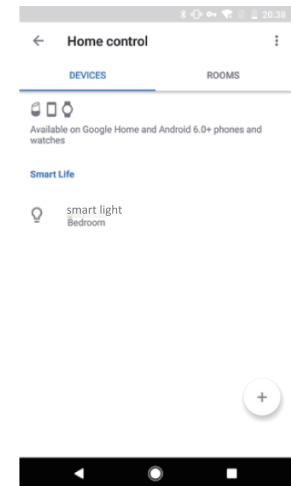
Device name is the one you give to the light. The light is named 'smart light' in this user guide. For example, "ok Google, turn on 'smart light' ", "ok Google, set 'smart light' to 'blue' " etc.

Step D



Same account and password
as Smart Life App

Step E



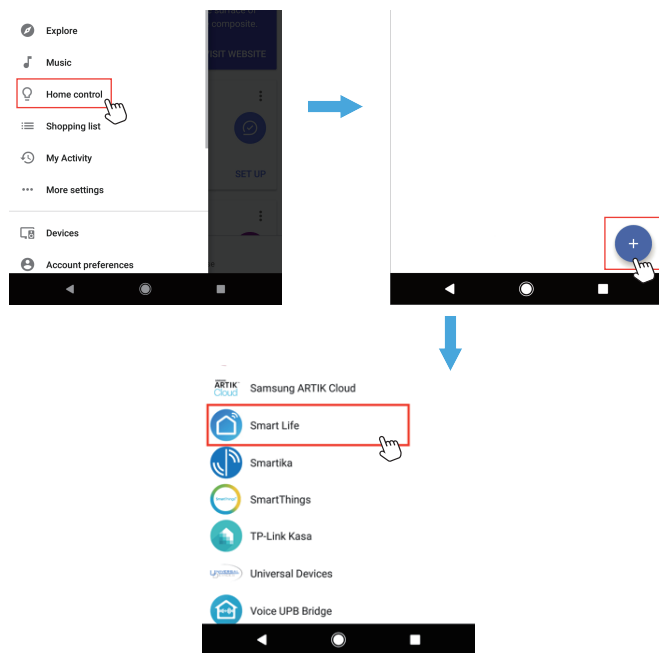
Part Four – How to control the light with Google Assistant?



Step A : Login Google Assistant App, tap 'Home Control' on the left side bar page.

Step B : Tap '+' button on the bottom right to enter next page.

Step C : Find 'Smart Life' from side bar list.



Contact Us

Have some issue? No worries! Please reach us via these channels.
Our customer services team is more than happy to help.



support@novostella.net



www.novostella.net

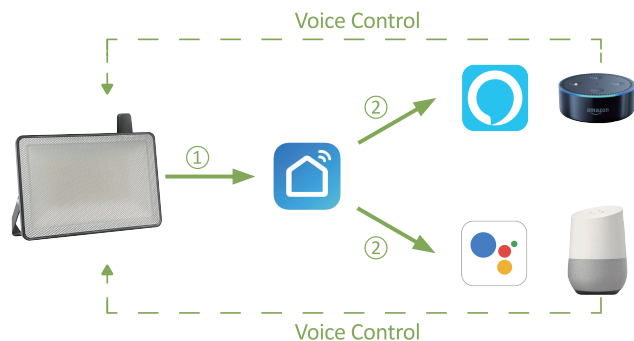
We are social. Get connected!

@Novostella_US @novostella_lighting @novostella_official

fb.com/novostella.fans @Novostella_official

Smart LED Flood Light User Guide

Before installation, let's know how the whole thing works.



Step One: Install the smart flood light.

Step Two: Fundamental set-up - Connect smart LED flood light to Smart Life App.

Step Three & Four: Optional set-up - Connect Smart Life App to Amazon Alexa or Google Assistant.

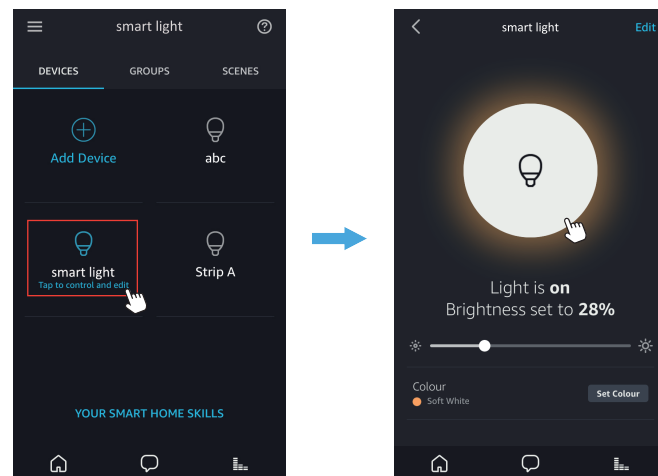
After completing Step Two, you can remote control the light on Smart Life App.

After completing Step Three and Four, you can voice control the light with Alexa or Google Assistant. This manual consists of Four parts.

Part One - How to install the light ?	3 - 7
Part Two - How to pair the light to Smart Life app?	8 - 12
Part Three - How to control the light with Amazon Alexa?	13 - 15
Part Four- How to control the light with Google Assistant?	16 - 17

Step F : Now you can control the light with Alexa App on the setting page. To turn on or off the light, simply tap the bulb icon.

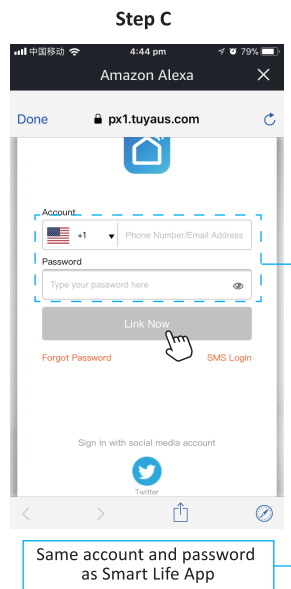
Step G : You can also voice control the light with Alexa by giving these commands: "Alexa, turn on 'device name' ", "Alexa, set 'device name' to 'color' ", "Alexa, set 'device name' to 'number' ". Device name is the one you give to the light. The light is named 'smart light' in this user guide. For example, "Alexa, turn on 'smart light' ", "Alexa, set 'smart light' to 'blue' " etc.



Note: To control the light with Google Assistant, please continue to read Part Four.

Step C : Enter your Smart Life App account and password. Tap 'Link Now', then tap 'Authorize' on the next page to bind Smart Life account to Alexa.

Step D : When your Smart Life account is bound to Alexa, tap 'DISCOVER DEVICES' to detect the light.



Part One - How to install the light?

⚠ Warning

- (1) Please check if the light and the parts are intact before installation.
- (2) Make sure to cut off power before installation.
- (3) Please do not place this light in corrosive conditions.
- (4) If there is any damage to the cord, please cut off the power and stop using it immediately.
- (5) Please do not retrofit the light within the warranty period.
- (6) To ensure the light works properly, please use the voltage indicated on the packing.

1. Parameters

Model	NTF77	NTF78
Wattage	60W	100W
Max Luminous Flux	5500lm	9000lm
Input Voltage	AC120V	
Color Temperature	Warm White, Cool White 2700K-6500K dimmable	
Frequency	50/60Hz	
Waterproof Rating	IP66	
Beam Angle	120°	
Working temperature	-20~40°C	