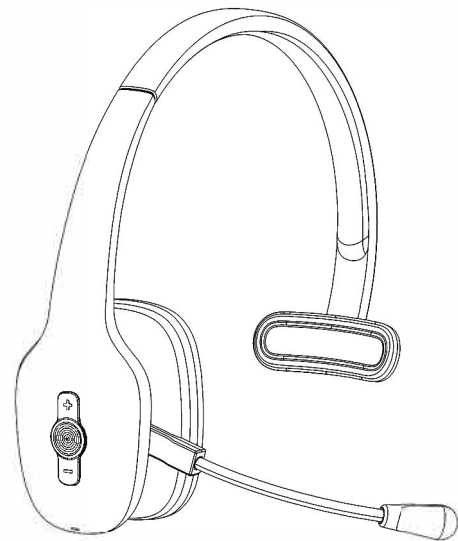


WIRELESS HEADSET H1 USER MANUAL

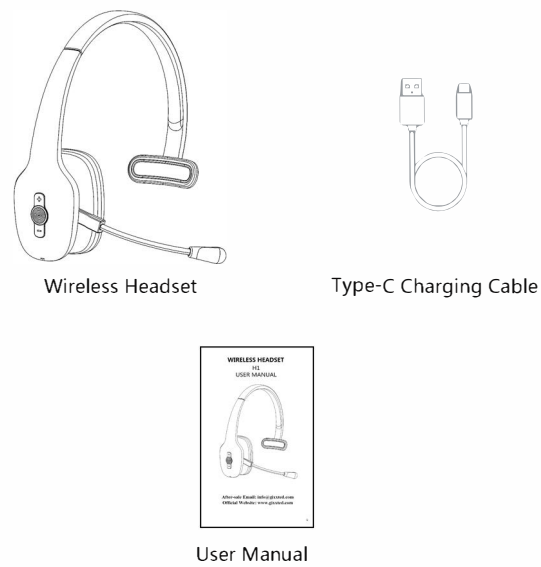


After-sale Email: info@gixted.com
Official Website: www.gixted.com

Contents :

1. What's in the Box.....	3
2. Product Overview.....	4
3. Basic Operation.....	5
4. LED Indicator.....	6
5. Basic Specifications.....	6
6. Wearing on the Left or Right.....	7
7. Super Easy Pairing.....	7
8. Super Easy Pairing.....	8
9. Super Easy Pairing.....	9
10. Pairing with 2 Devices Simultaneously.....	10
11. Charging.....	10

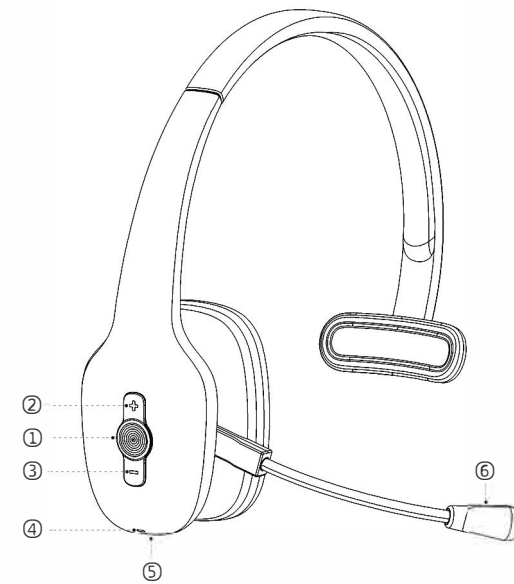
What's in the Box



Package Contents:

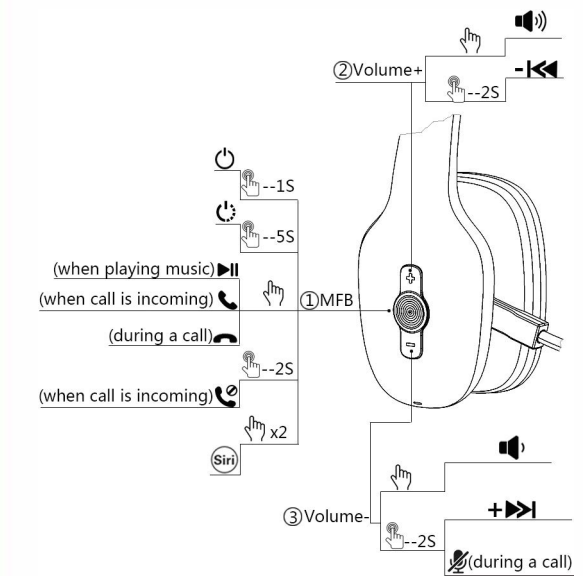
- A. Wireless Headset × 1
- B. Type-C Charging Cable × 1
- C. User Manual × 1

Product Overview



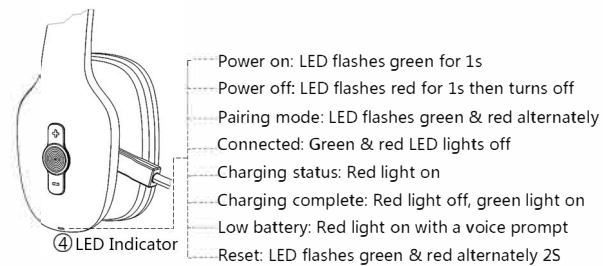
- ① Multi-Function Button
- ② Volume+/Previous Track
- ③ Volume-/Next Track
- ④ LED Indicator
- ⑤ Charging Port
- ⑥ Microphone

Basic Operation



- ⏻ : Power on
- 🔌 : Power off
- ▶⏸ : Play/Pause
- ☎ : Answer/End a call
- 📞 : Hang up a call
- 📞 : Reject a call
- 🔊 : Volume up
- 🔊 : Volume down
- ⏮ : Previous track
- ⏭ : Next track
- 👆 : Long press
- 🔇 : Mute on/off
- 👆 : Single click
- 🗣️ : Siri

LED Indicator



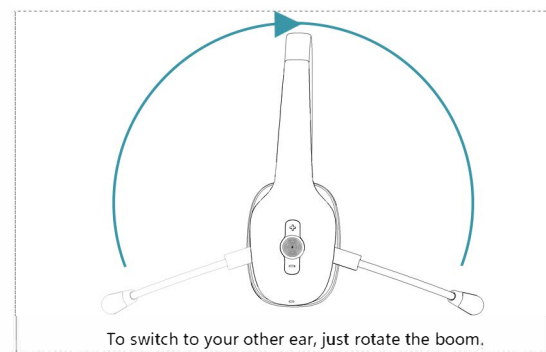
Basic Specifications

Operating Range	Up to 33 ft/10 m (Obstacle-free Environment)
Supporting Protocols	A2DP/HFP/HSP/AVRCP
Charging Time	2-3 hours
Talk Time	30 hours
Music Time	40 hours
Standby Time	90 days
Battery Capacity	400mAh
Operating Temperature	-10 --- 50°C
LED Indicator	Blue/Reen LED light
Net Weight	110g

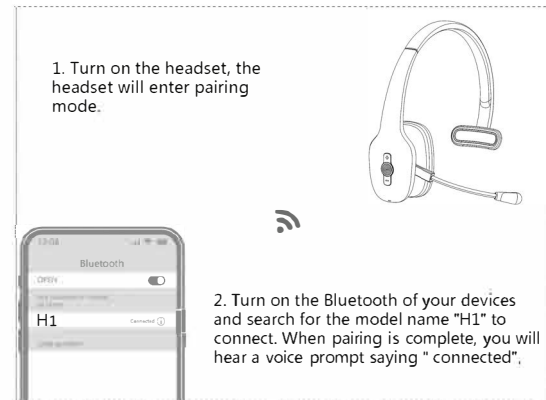
Voice Prompts

- When the headset is turned on, there will be a voice prompt: "Power on".
- When the headset is turned off, there will be a voice prompt: "Power off".
- After being connected successfully, there will be a voice prompt: "connected".
- When disconnected, there will be a voice prompt: "disconnected".

Wearing on the Left or Right



Super Easy Pairing

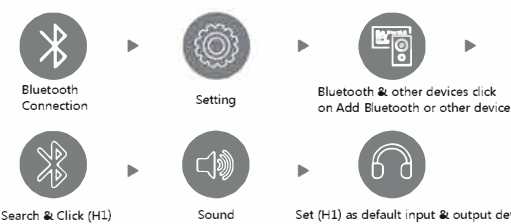


Super Easy Pairing

B. How to pair with a computer

B-1. How to pair?
The headset can pair with the computer without using the dongle (not included in the package).

- If your computer doesn't have Bluetooth, first download a universal driver software according to the model of your computer on browser or contact your computer manufacturer. When Bluetooth is installed successfully, you will have a little gray Bluetooth icon in the bottom right corner of your computer.
- Turn on your computer's Bluetooth.
- Start with the headset off. Press and hold the MFB button of H1 for 2 seconds, it will turn on and enter pairing mode automatically with red and blue lights flash alternately. Keep the H1 close to the computer so it will be discovered by the computer. You will hear the voice guidance say "Pairing".
- On your PC, select Start > Settings > Bluetooth & other devices > Add Bluetooth or other device > Bluetooth > Click on the model number [H1] of your device. A window will pop up indicating the Bluetooth connection is complete. You will hear "Your headset is connected" at the same time.
- Right-click the Speakers icon at the bottom right, then click Open Sound settings. Select [H1] as your default output device (Speaker). Select [H1] as your default input device (Microphone). Make sure that H1 has been selected as both default output and default input device. Then close Settings.



Super Easy Pairing

B. How to pair with a computer

B-2. The microphone and the speaker of the headset may be disabled or not set as the default device on your computer.

To avoid the problem of having no sound when pairing the headset with your computer:

- Make sure the headset is pairing with the computer successfully.
- Please check the sound settings of your PC to make sure sound is played via the correct output and input after the headset is connected with your computer.

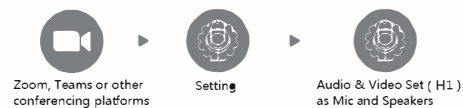
Please follow the steps below to set:

- Right-click the Speakers icon at the bottom right, then click Open Sound settings.
- Select [H1] as your default output device (Speaker).
- Select [H1] as your default input device (Microphone).
- Make sure that H1 has been selected as both default output and default input device. Then close Settings.

B-3. Zoom & Other meeting Apps settings

To avoid the problem of one side can not hear the voice from the other side when having calls via Zoom, Teams or other conferencing platforms when using it with a computer:

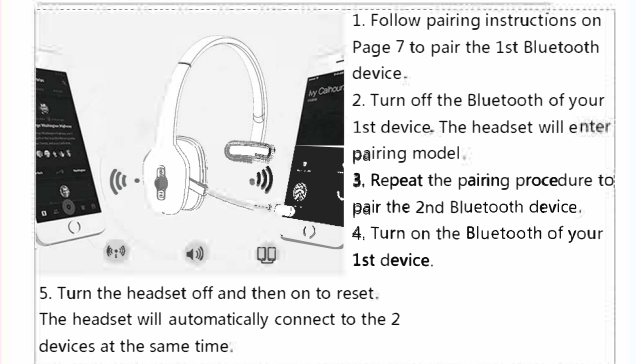
- Make sure the headset is pairing with the computer successfully.
- Make sure that [H1] has been selected as both default output and default input device on the sound settings of your PC.
- Please check the sound settings of the platforms you are using, make sure the mic and the speaker are both set to H1 & the microphone of these conferencing platforms is not muted.



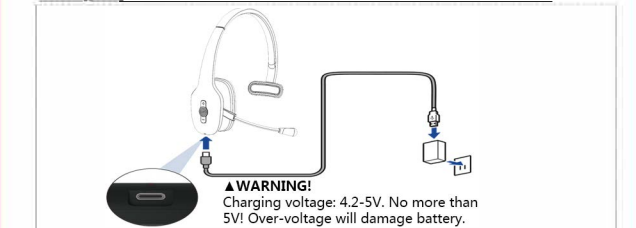
C. Reconnect

The headphone has matching records. Hold the MFB button of H1 for 2 seconds to power on, H1 will automatically enter pairing mode with red and blue lights flash alternately and will search and reconnect the last paired device automatically, other devices need to be connected manually.

Pairing with 2 Devices Simultaneously



Charging



NOTE

If you connected the headset unsuccessfully or your device can't find [H1], please reset the headset:
With the charging cable plugged in, press and hold the MFB button for 5 seconds. The LED will alternately flashes green & red 2S. Reset is completed.

WARRANTY

If you encounter any problems in the use of the product, please feel free to contact us, our professional customer service team will provide you with high-quality solutions.
Email: info@gixted.com
Facebook: [@gixted](https://www.facebook.com/gixted)

尺寸 : 85*135mm
材质 : 105g铜版纸
折叠方式 : 风琴折页

FCC Statement

This device complies with part 15 of the FCC rules. Operation is subject to the following two conditions: (1) this device may not cause harmful interference, and (2) this device must accept any interference received, including interference that may cause undesired operation.

Changes or modifications not expressly approved by the party responsible for compliance could void the user's authority to operate the equipment.

NOTE: This equipment has been tested and found to comply with the limits for a Class B digital device, pursuant to part 15 of the FCC Rules. These limits are designed to provide reasonable protection against harmful interference in a residential installation. This equipment generates uses and can radiate radio frequency energy and, if not installed and used in accordance with the instructions, may cause harmful interference to radio communications. However, there is no guarantee that interference will not occur in a particular installation. If this equipment does cause harmful interference to radio or television reception, which can be determined by turning the equipment off and on, the user is encouraged to try to correct the interference by one or more of the following measures:

- Reorient or relocate the receiving antenna.
- Increase the separation between the equipment and receiver.
- Connect the equipment into an outlet on a circuit different from that to which the receiver is connected.
- Consult the dealer or an experienced radio/TV technician for help.

The device has been evaluated to meet general RF exposure requirement. The device can be used in portable exposure condition without restriction.