

## BUSINESS BLUETOOTH HEADSET



### Features

- Built-in intelligent voice prompts
- Built-in high definition microphone, advanced 4X noise cancelling technology.
- Ergonomics, lightweight design. 180 degree rotatable apply to both left and right ears.
- Separate power mute and volume buttons allow easy access and control.
- Pair easily with any two Bluetooth devices at one time.
- Compatible with all Bluetooth-enabled devices and high-fidelity stereo music player.

### Product Specifications

- Headset battery capacity: 55mAh
- Talk time: 12hours
- Music play time: 10 hours
- Headset charging time: about 1.5 hours
- Charging case battery capacity:500mAh
- iPhone battery indication
- Standby time: 240 hours
- Bluetooth Version: V5.1
- Operating Range: up to 33 feet (accessibility, empty place)
- Support HFP, HSP, A2DP and AVRCP profiles
- Working environment:-10~50 °C

### How to Wear?



### How to Wear?



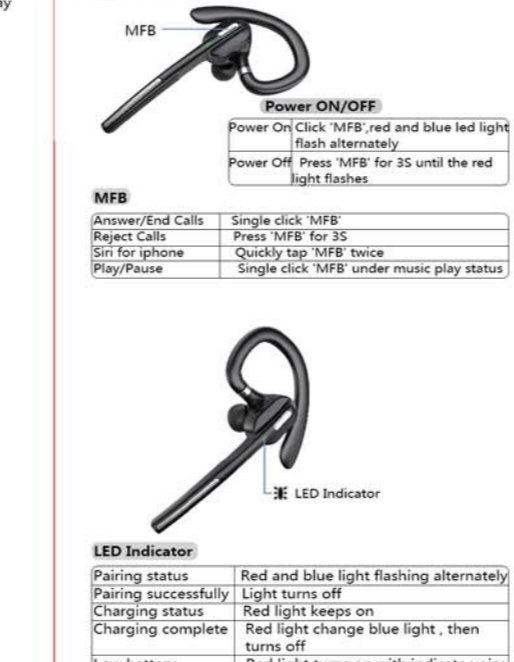
### Package List



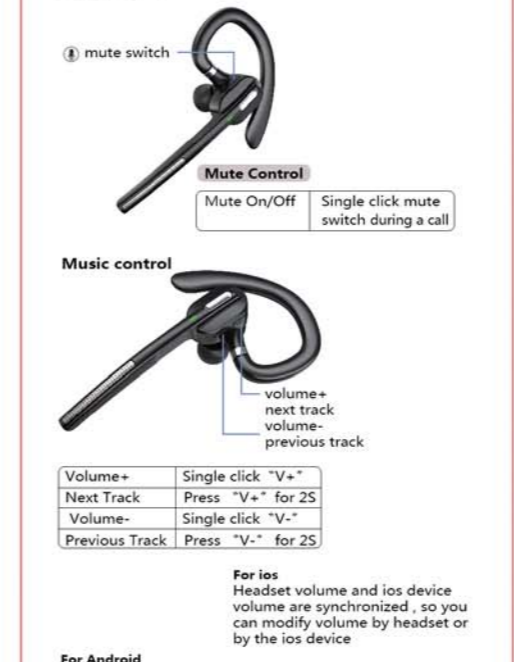
### Function Description



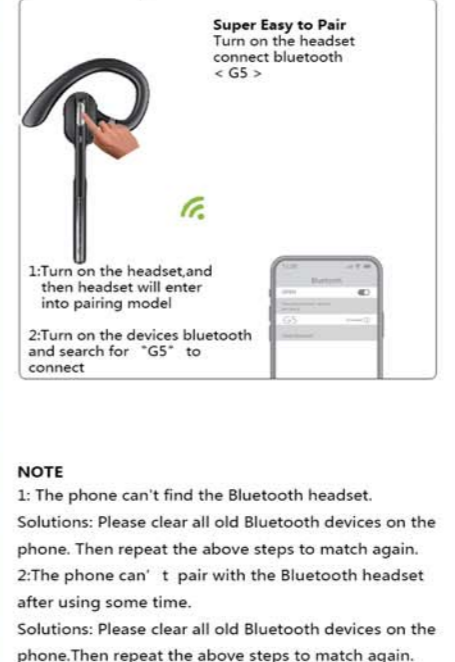
### Key Functions



### Key Functions



### Headset Pairing



### Pair with 2 Device Simultaneously



### How to charge?



### How to charge the headset?



This device complies with part 15 of the FCC Rules. Operation is subject to the following two conditions: (1) this device may not cause harmful interference, and (2) this device must accept any interference received, including interference that may cause undesired operation.

Any changes or modifications not expressly approved by the party responsible for compliance could void the user's authority to operate the equipment.

NOTE: This equipment has been tested and found to comply with the limits for a Class B digital device, pursuant to Part 15 of the FCC Rules. These limits are designed to provide reasonable protection against harmful interference in a residential installation. This equipment generates, uses and can radiate radio frequency energy and, if not installed and used in accordance with the instructions, may cause harmful interference to radio communications.

However, there is no guarantee that interference will not occur in a particular installation.

If this equipment does cause harmful interference to radio or television reception, which can be determined by turning the equipment off and on, the user is encouraged to try to correct the interference by one or more of the following measures:

- Reorient or relocate the receiving antenna.
- Increase the separation between the equipment and receiver.
- Connect the equipment into an outlet on a circuit different from that to which the receiver is connected.
- Consult the dealer or an experienced radio/TV technician for help.

The device has been evaluated to meet general RF exposure requirement. The device can be used in portable exposure condition without restriction