

BUSINESS WIRELESS HEADSET

Crystal Clear Sound



G3
User Manual

Report No: DL-2020124987C
Report No: LCS190802068AS

Function Description



key Functions

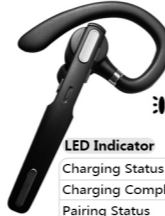


MFB	
Turn ON	Press "MFB" for 2S until the blue and red light flash alternately.
Turn off	Press "MFB" for 3S until the red light flashes.
Answer Call	Single click "MFB"
Reject Call	Press "MFB" for 3S.
Redial Last Call	Quickly tap the "MFB" twice
Play/Pause	Press the "MFB" under music play status.



Mute Switch	
Siri for iPhone	Click mute switch in standby model
Mute/Unmute	Click mute switch in call

key Functions



LED Indicator	
Charging Status	Red light keeps flashing
Charging Complete	Red light turns Off
Pairing Status	Red and green light flashing alternately
Low Battery	Red light turns On with indicate Voice

Music Control



Volume+	Single click "V+"
Next Track	Press "V+" for 2S
Volume-	Single click "V-"
Previous Track	Press "V-" for 2S

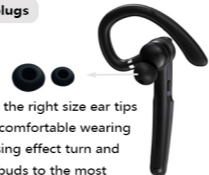
For Android
Headset volume and android phone volume are Not synchronized. Even if headset volume full blast, you can increase volume on android phone

For ios
Headset volume and ios device volume are synchronized , so you can modify volume by headset or by the ios device

Comfortable Wear



Replaceable Earplugs



Please choose the right size ear tips to ensure the comfortable wearing and perfect using effect turn and adjust the earbuds to the most comfortable wearing position

Features

- Built-in intelligent voice prompts
- Built-in high definition microphone, advanced 4X noise cancelling technology.
- Ergonomics, lightweight design. 180 degree rotatable apply to both left and right ears.
- Separate power mute and volume buttons allow easy access and control.
- Pair easily with any two Bluetooth devices at one time.
- Compatible with all Bluetooth-enabled devices and high-fidelity stereo music player.

Strong Battery



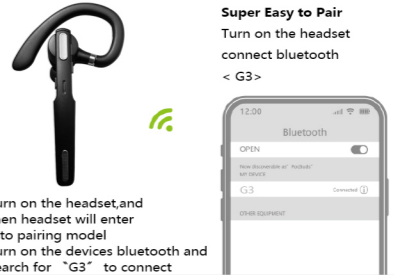
Product Specifications

- Headset battery capacity: 110mAh
- Talk time: 10hours
- Music play time: 8 hours
- Headset charging time: about 1.5 hours
- iPhone battery indication
- Standby time: 180 hours
- Bluetooth Version: V5.0
- Operating Range: up to 33 feet (accessibility, empty place)
- Support HFP, HSP, A2DP and AVRCP profiles
- Working environment: -10~50°C

Voice Prompts

- When the headset is on, there will be the automatic voice prompt: power on
- When the headset is off, there will be the automatic voice prompt: power off
- When being connected successfully, there will be automatic voice prompt: your headset is connected
- When being disconnected, there will be automatic voice prompt: your headset is disconnected

Headset Pairing



Pair with 2 Device Simultaneously



- Turn off the headset. then turn on the headset again. the headset will automaticall connect the second bluetooth device. then click connect on the first bluetooth device, now the headset pair with 2 device simultaneously

How to Charge?



NOTE

When the headset is used for a period of time, if the headset can not be connected to the device, please restore the factory settings.

WAY:When the headset is charging, press the MFB button for 5 - 6 seconds, and the blue light flash once, then the headset restores to the factory setting.

Warranty

We provide 30 days no reason to return worry-free 12-month guarantee and friendly customer service . If for any reason you're not completely satisfied, please contact us, our excellent service will bring you a smile.

This device complies with part 15 of the FCC Rules. Operation is subject to the following two conditions: (1) this device may not cause harmful interference, and (2) this device must accept any interference received, including interference that may cause undesired operation.

Any changes or modifications not expressly approved by the party responsible for compliance could void the user's authority to operate the equipment.

NOTE: This equipment has been tested and found to comply with the limits for a Class B digital device, pursuant to Part 15 of the FCC Rules. These limits are designed to provide reasonable protection against harmful interference in a residential installation. This equipment generates, uses and can radiate radio frequency energy and, if not installed and used in accordance with the instructions, may cause harmful interference to radio communications.

However, there is no guarantee that interference will not occur in a particular installation.

If this equipment does cause harmful interference to radio or television reception, which can be determined by turning the equipment off and on, the user is encouraged to try to correct the interference by one or more of the following measures:

- Reorient or relocate the receiving antenna.
- Increase the separation between the equipment and receiver.
- Connect the equipment into an outlet on a circuit different from that to which the receiver is connected.
- Consult the dealer or an experienced radio/TV technician for help.

The device has been evaluated to meet general RF exposure requirement. The device can be used in portable exposure condition without restriction