

User Manual

Contents

Parts Of The Camera.....	4
Power Supply.....	4
Inserting Storage Media.....	5
Basic Operation	6
Take Photos,Record Video,Playback.....	13
Aligning the camera	14
Using the wall bracket.....	15
Remote Control by Mobile App/ Wi-Fi Connecting.....	17
Connect of Camera and Pad/Smartphone via WiFi....	17
Connecting To TV.....	22
Download Files To The Computer.....	23

Introduction

Congratulations on the purchase of your new device. You have selected a high-quality product. The operating instruction is one constituent of this product. It contains important information about safety, use and disposal.

Before using the product, familiarise yourself with all operating and safety instructions. Use this product only as described and only for the specified areas of application.

Copyright

This documentation is subject to copyright protection. Any copying or reproduction, including extracts thereof, and the reproduction of images (even in a modified state), is only permitted with the written authorisation of the manufacturer.

Intended Use

This device is intended only for recording digital photos and videos, particularly for observing wildlife. It is not intended for any other use or for uses extending beyond those stated. This device is not intended for use in commercial or industrial environments.

The manufacturer accepts no responsibility for damage caused by failure to observe these instructions,

improper use, incompetent repairs, making unauthorised modifications or for using unapproved replacement parts. The operator alone bears liability. When the equipment will be placed in the outdoor filming, rapid changes in the weather could lead to error record.

Safety

Please read below safety precautions carefully before using the camera.

- Do not try to disassemble the product case. Only authorized technician can repair the product.
- The camera will be hot after using for too long time. This is normal.
- Please use the accessory provided by our factory.



IMPORTANT

This device complies with Part 15 of the FCC Rules.

Operation is subject to the following two conditions:

- (1) This device may not cause harmful interference, and
- (2) This device must accept any interference received, including interference that may cause undesired operation

➤ **Parts Of The Camera**

1. Display Screen

2. Up/Video Button

3. Shot Button

4. Right Button

5. OK Button

6. Speaker

7. Menu Button

8. Left Button

9. Playback Button

10. Down/Photo Button

11. Micro SD Card Slot

12. AV Jack

13. USB Jack

14. OFF-TEST-ON Mode

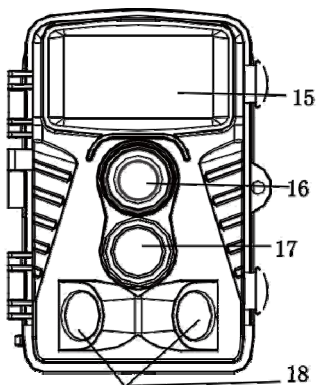
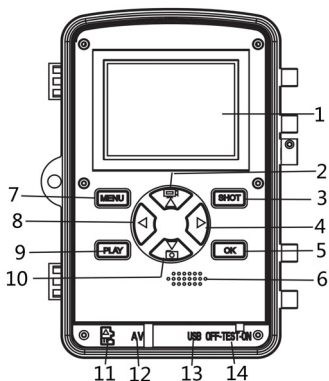
Button

15. Infrared LEDs

16. Lens

17. Front Motion Sensor

18. Side Motion Sensor



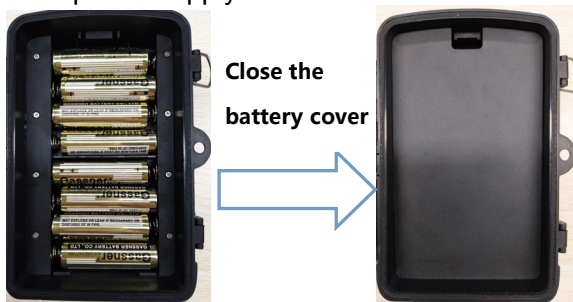
➤ **Power Supply**

Please install batteries before using the camera.

◆ Open the camera case and remove the battery cover.

Install 8 pieces of 1.5V AA batteries. Please make sure the electrode is correct.

◆ If the camera is in low power, please connect the camera to a power adapter(not provide) for power supply (The specification of the adapter is DC6.0V/2A). Locate the rubber seal on the bottom of the camera and open it. Connect one end of the power adapter to the hunting machine, and the other end to the power source for power supply.



➤ **Inserting Storage Media**

Please prepare a Micro SD card and insert it into the camera for saving more files. Before recording, please format the memory card first.

◆ Support Micro SD card, up to 256GB. Suggest to use at least class 6 or above high speed card.

◆ To avoid malfunction, the memory card should be far away water, strong vibration, dust, hot source and direct sunlight.

- ◆ Do not insert the memory card forcibly. Please refer to the marking on the camera.
- ◆ For the first time use, please wait for the memory card temperature reach the ambient temperature. The camera will be short-circuit influenced by environment temperature and humidity. Please notice protection for the camera when using it outdoor.
- ◆ If the capacity of memory card is full, the camera will stop recording automatically and the LEDs will go out.
- ◆ Press the edge of the card gently to pop-up the TF card.

➤ **Basic Operation**

Turn On And Off The Camera

Switch the Mode Button to “Test/On” to turn on the camera.

Switch the Mode Button to “Off” to turn off the camera.

System Setup

Switch Mode Button to “Test”, then you can set the system parameters.

1. Press Video/Photo button to switch between the two modes.
2. Press Menu button to open the setup menu.
3. Press Up/Down button to scan all menu. Then press OK button to enter the options interface.

4. Press Up/Down button to scan all options. And press OK button to confirm options.

5. Press Menu button again to turn back to last menu or exit the setup menu.

Setup menu and functions are as below:

Mode

Set the working mode. In photo mode, the camera just take pictures. In Video mode, the camera just record video. In photo&video mode, the camera will take a photo first, then start to record video.

Options : 【Photo】 / 【Video】 / 【Photo&Video】 .

Photo Resolution

Set the still image resolution.

Options :【20MP(5200x3900P)】/【16MP(4608x3456P)】
/ 【12MP(4000x3000P)】 / 【8MP(3264x2448P)】 /
【5MP(2592x1944P)】 / 【3MP(2048x1536P)】 /
【1MP(1280x960P)】 .

Photo Series

Set the photo number of continuous shooting. In photo mode, the camera will take photos continuously.

Options : 【1 photo】 / 【2 photos in series】 / 【3 photos in series】 / 【10 photos in series】 .

Video Resolution

Set the video resolution. The bigger the resolution is ,the longer the video time can be stored.

Options : 【3840x2160P】 / 【2688x1520P 20fps】 /
【1920x1080P】 / 【1280x720P】 / 【1280x720P 60fps】
/【848x480P】/【720x480P】/【640x480P】/【320x240P】.

TL Video Resolution

Set the resolution of time lapse video .

Options:【5200x3900P】/【4608x3456P】/【4416x3312P】
/ 【4000x3000P】 / 【3648x2736P】 / 【3264x2448P】 /
【3072x2304P】 / 【2592x1944P】 / 【2048x1536P】 .

Video Length

Set the duration of recording a video clip. The shortest time is 3 seconds and the longest time is 10 minutes.

Options : 3 seconds~10 minutes.

Audio Recording

Open this function,the camera will record audio when recording video.Options : 【On】 / 【Off】 .

Shot Lag

Set the time of delay shooting when the camera detects the motion. Within the selected time, the camera will not record any image or video. It can avoid

to store too much same events and save more capacity.

Options : 5 seconds~60 minutes.

Side Motion Sensors

Open/close the side motion sensors.

Options: **【On】** / **【Off】** .

Sensitivity Motion Sensors

Set the sensitivity of the sensors. Environmental impact is small indoors, you can choose “Low”. In outdoor, choose “Middle”in normal condition. Choose “High”if the environment impact is huge outdoors. The temperature can also influence the sensor sensitivity. “High Sensitivity”applies to mild environment. ”Low Sensitivity ”applies to cold environment.

Options : **【Low】** / **【Middle】** / **【High】** .

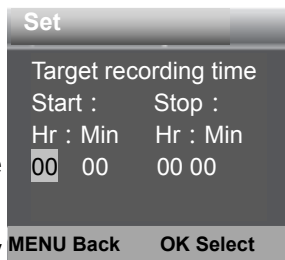
Target Recording Time

Set the target recording time.

As shown in below picture, you can set the start and stop time.

The camera will work just in the stated time slot. In other time, the camera will keep in standby

state.Options : **【On】** / **【Off】** .



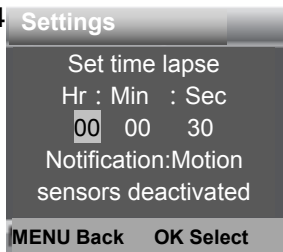
Time Lapse

In Time lapse menu, there are three options as below.

[Normal]: The camera will take pictures automatically as per set time interval. For example, set the interval time to 1 hour, the camera will take a photo each hour. If you want to observe that a plant blooms, the camera will take 24 photos in 24 hours to record the whole process of blooming.

[TL Video]: You can set the interval time. The time range is from 1 second to 24 hours. For example, set the interval to 1 hour, the camera will take a photo each hour. If the camera works for 24 hours, there will be 24 photos. These photos will be converted into a video.

[Off]: Close the time lapse function.



Language

Set the language display on screen.

Options : **[English]** / **[German]** / **[Danish]** / **[Finnish]** / **[Swedish]** / **[Spanish]** / **[French]** / **[Italian]** / **[Dutch]** / **[Portuguese]** / **[Simplified Chinese]** / **[Traditional Chinese]** / **[Japanese]** .

Endless Capture

Set the camera to record video in loop.

Options : 【On】 / 【Off】 .

Time & Date

Set the date and time of camera.

The date format: dd/mm/yyyy,

yyyy/mm/dd,mm/dd/yyyy.

The time format: 24h , 12h.

Press Left/Right button to choose the item.Press Up/Down button to adjust the value. And press OK button to confirm.

Options : 【Set time&date】 / 【Time format】 / 【Date format】 .

Photo Stamp

Stamp the date&time on the photos or not.

Options : 【Time&date】 / 【Date】 / 【Off】 .

Password Protection

Set the power-on password of the camera. The password is four digits, each digit ranges from 0 to 9 or A to Z.

If you forget the password, please reset the camera.

Then all parameters will reset to the factory settings.

Options : 【On】 / 【Off】 .

WIFI SSID

Set and change the WIFI name.

WIFI Password

Set and change the WIFI password.

Beep Sound

Open/close the button sound.

Options : **【On】 / 【Off】** .

Format Memory Card

Formatting the memory card will delete all data permanently. Before using a new memory card or a card that has been used in another device previously ,please format the memory card.

Options : **【Yes】 / 【No】** .

Serial NO.

Set the unique serial number for the camera. The number is four digits , each digit ranges from 0 to 9 or A to Z. Options : **【On】 / 【Off】** .

Reset Settings

Restore the camera to factory default settings including password,serial number and so on.

Options : **【Yes】 / 【No】** .

Version

Look up the Firmware information of the camera.

➤ **Take Photos,Record Video,Playback**

Switch the Mode Button to “Test”. In this mode,you can take photos, record video and playback files manually.

◆ **Take Photos** : Press Photo button to switch to photo mode. Press Shot button to take a picture.

◆ **Record Video** : Press Video button to switch to video mode.Press Shot button to start to record a video clip. Press Shot button again to stop recording.

◆ **Playback** : Press Playback button to enter the playback interface. Press Up/Down button to scan photos or video. When playback video, press OK button to play the video. Press OK button again to have a pause. Press Menu button to stop playback. Press Playback button again to exit the playback mode.

Playback Menu :

1) **Delete current file** : Delete the current photo or video. Options : **【Cancel】 / 【Delete】** .

2) **Delete all files** : Delete all photo and video files in the memory card. Options : **【Cancel】 / 【Delete】** .

3) **Activate slide show** : Playback the photos in slide way. Each photo display 3 seconds. Press OK button to stop playing.

4) **Write protect** : Lock the file. It can avoid accident deletion. Options : **【Write-protect current file】 /**

【Write-protect all files】/【Unlock current file】/【Unlock all files】 .

Aligning the camera

In test mode you can adjust the optimum exposure angle and the range of the motion sensors. During alignment, consider whether the use of the side motion sensors may be useful for attaining the desired observation results. You can activate/deactivate the side motion sensors using the above-described menu. Please adjust the camera as follows:

1. Fasten the camera to a tree or similar object at a height of 1–2 meters and align the camera in the desired direction. Then move slowly from one side of the target area to the other side. While doing this, monitor the motion display.
2. If this lights turn green, you are detected by one of the activated side motion sensors . If lights turn red, you are detected by the front motion sensor . By this way, you can align the camera to the best angle and distance.

Working Mode

Switch the Mode Button to “On”. After turn on the camera, the screen will display 15 seconds countdown. Then the LEDs and screen will go out. The camera

begins to operate independently and enter standby mode.

If the wild animals enter the detection range of the motion sensors , the camera will be activated and detect the motion trail.

If the wild animals continue to move to the detection zone of the sensor, the camera will take photos or record video automatically.

When the wild animals leave the detection zone of the sensors , the camera will be deactivated and turn back to standby mode.

➤ **Using the wall bracket**

You can mount the camera permanently on a wall or tree using the supplied wall bracket. Before mounting the wall bracket you should ensure that all existing screws are tight. The best installation height distance from the ground about 1 meter.

Components

1. Tripod screw
2. Lock nut
3. Pivot bolts
4. Drill holes
5. Hexagonal screw
6. Wall plugs
7. Screws



Mounting the wall bracket

Required tools

- Drill
- 6 mm masonry/concrete drill bit
- Phillips head screwdriver

CAUTION

- ▶ Ensure that there are no electric lines, water or heating pipes installed at the proposed drilling location.
- ▶ The supplied wall plugs are only suitable for mounting on concrete and stone. Before starting the installation, please check your installation location carefully for its suitability for the plugs.

The assembly material used must be suitable for the respective location. If in doubt, consult a professional.

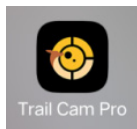
Install Steps

- ◆ Mark the drill holes by holding the foot of the wall bracket at the desired mounting location and marking the hole positions.
- ◆ Use a drill with a 6 mm drill bit to drill the required holes and insert the plugs and insert the wall plugs flush with the wall.
- ◆ Screw the wall bracket to the wall using the supplied screws .
- ◆ Mount the camera on the tripod screw and screw the camera a little way on (about three turns).

- ◆ Turn the camera in the desired direction and lock it with the lock nut .
- ◆ To move the camera into its final position, undo the two pivot bolts a little, position the camera and fix the position by tightening the two pivot bolts .

➤ **Remote Control by Mobile App/ Wi-Fi Connecting**

This camera can be remotely operated almost full functions via a Pad and Smartphone. Before perform remote control of this camera, an APP named “Trail Cam Pro” should be downloaded from “Apple App Store” or from “Google Play Store” and installed to your Pad and/or Smartphone.

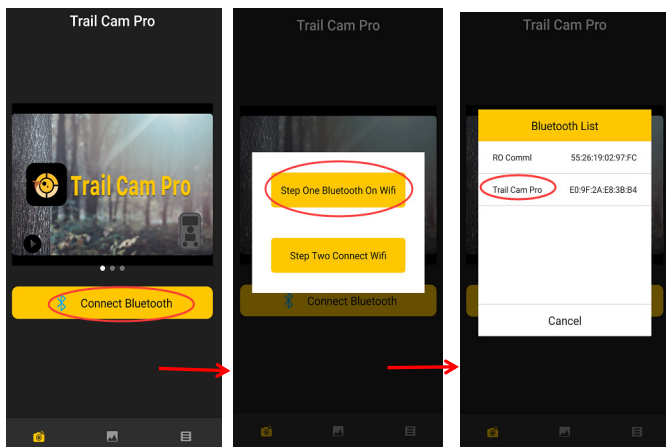


➤ **Connect of Camera and Pad/Smartphone via WiFi**

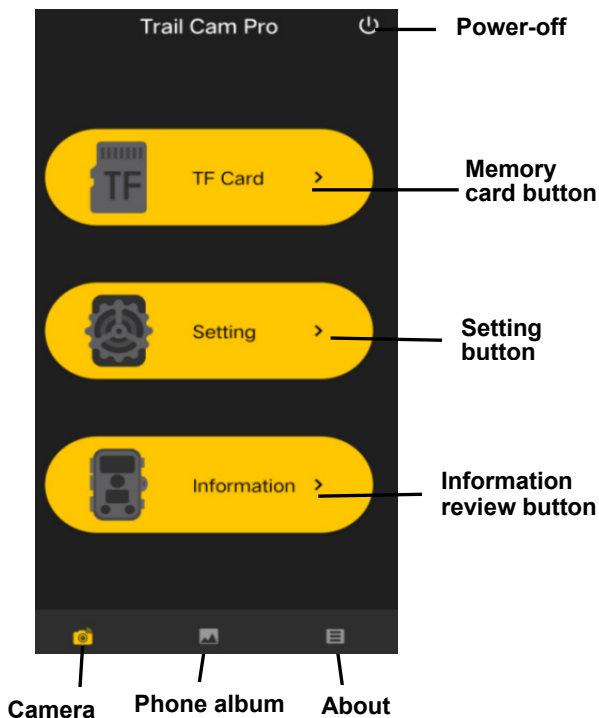
1. Download and install the "Trail Cam Pro" APP on the mobile phone in the app store and turn on the Bluetooth and WIFI functions on the mobile phone.
2. Switch the camera button from "OFF" to "ON".
3. After the 15 seconds countdown finishing, the camera enter sleep working mode.(if the camera is already under working mode, can ignore step 2 and step 3.)

4. Open the "Trail Cam Pro" APP and click the "Connect Bluetooth" button on the APP a new interface will pop up, please click "Step One Bluetooth On Wifi" will jump to the Bluetooth list, find the Bluetooth hotspot of **Trail Cam Pro** and click to select.

There will be a prompt "Send Bluetooth command to turn on WIFI..." "WIFI is turned on, please connect" and the phone WIFI option will automatically pop up. Find the WIFI hotspot with the name "Trail Cam Pro*****" (if you could not see this hotspot) , Need to wait or refresh), then enter the initial password "12345678" to enter the WIFI connection;



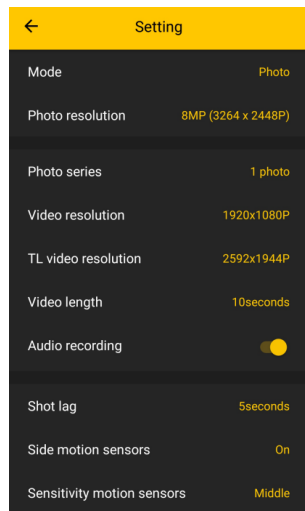
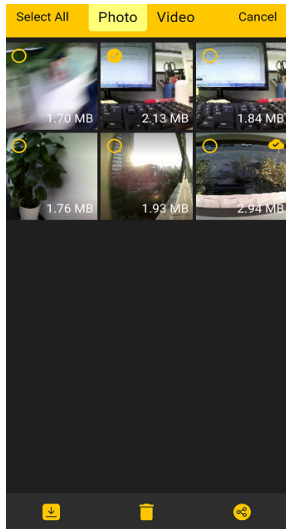
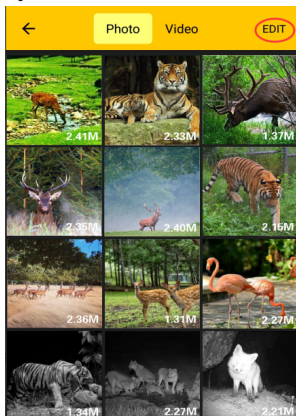
5. After WIFI connection is successful, turn back to APP interface, user can do functional operation in the APP.



◆ Memory card button

Click memory card button, user will see below interface shown the photo and video files stored in the TF card. Click the icon EDIT on the top right corner, then can choose the picture or video to download or delete the

files, you also can select all.

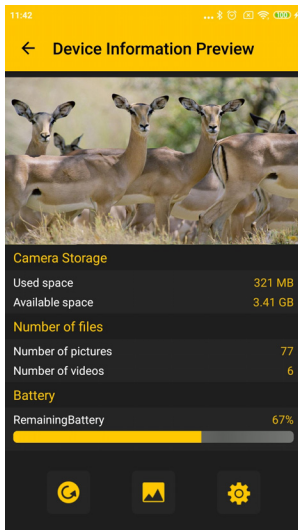


◆ Setting button

Click Setting button, user will see below interface shown the setup menu list of camera. Can set the parameters of camera on APP.

◆ Information review button

Click information review button, user will see below interface shown the information of camera storage, number of files and battery. User also can see a current image viewed by camera. Click the refresh icon, can refresh image and store the current image in the phone album.



◆ Phone album

User can review the photo and video files downloaded in the pad or smartphone album. Can zoom in image, playback, choose, delete and share files.

6. After setting finished in APP, turn back to the APP main interface. Click the power-off icon on the top right corner or exit the APP. The camera will enter sleep working mode.

Tips:

1. When connecting to WIFI, if the distance between

the phone and the camera is closer, the WIFI signal will be stronger, the stability will be better, and the download speed will be faster;

2. After the operation of the APP, it is suggested to click the Power- off button in the upper right corner to shut down the APP. The camera will enter the sleep-hunting mode to save battery power;

3. When the product enters WIFI mode, if the mobile phone fails to connect WIFI after 3 minutes, the product will automatically enter sleep-hunting mode;

4. When WIFI connection is successful. If there is no information interaction between the camera and the mobile phone, the camera will automatically disconnect after 3 minutes and enter the sleep-hunting mode.

➤ **Connecting To TV**

The camera can transfer the video signal to an external monitor or a television. Please follow below instructions to operate.

1. Connect the camera to the TV via provided AV cable.

2. Turn on the TV and set it to AV mode.

3. Turn on the camera, switch the Mode Button to“Test”.

4. Once connection is successful, the camera will enter playback mode and the screen turn black. The image will show on the TV.

➤ **Download Files To The Computer**

There are two ways to download files from the memory card to a computer:

- ❖ By inserting the memory card into a card reader
- ❖ By connecting the camera to a computer using the supplied USB cable.

Using a Card Reader

1. Pop-up the memory card from the camera and insert it into a card reader. Then connect the card reader to a computer.
2. Open [My Computer] or [Windows Explorer] and double-click the removable disk icon that represents the memory card.
3. Copy image or video files from the memory card to your computer.

Connecting the Camcorder to a PC by the USB Cable

1. Connect the camera to the computer via USB cable. Turn on the camera, the screen will display "MSDC".

2. Open [My Computer] or [Windows Explorer].
A "Removable Disk" appears in the drive list.
Double-click the "Removable Disk" icon to view its contents. All files are stored in the folder named "DCIM".
3. Copy the photos or files to your computer.

FCC WARNING

This device complies with part 15 of the FCC Rules. Operation is subject to the following two conditions: (1) this device may not cause harmful interference, and (2) this device must accept any interference received, including interference that may cause undesired operation.

Any changes or modifications not expressly approved by the party responsible for compliance could void the user's authority to operate the equipment.

NOTE: This equipment has been tested and found to comply with the limits for a Class B digital device, pursuant to Part 15 of the FCC Rules. These limits are designed to provide reasonable protection against harmful interference in a residential installation. This equipment generates, uses and can radiate radio frequency energy and, if not installed and used in accordance with the instructions, may cause harmful interference to radio communications.

However, there is no guarantee that interference will not occur in a particular installation.

If this equipment does cause harmful interference to radio or television reception, which can be determined by turning the equipment off and on, the user is encouraged to try to correct the interference by one or more of the following measures:

- Reorient or relocate the receiving antenna.
- Increase the separation between the equipment and receiver.
- Connect the equipment into an outlet on a circuit different from that to which the receiver is connected.
- Consult the dealer or an experienced radio/TV technician for help.

To maintain compliance with FCC's RF Exposure guidelines, This equipment should be installed and operated with minimum distance between 20cm the radiator your body: Use only the supplied antenna.