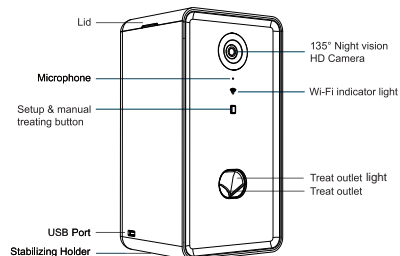
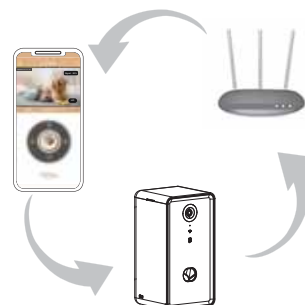


## USER INSTRUCTION MANUAL



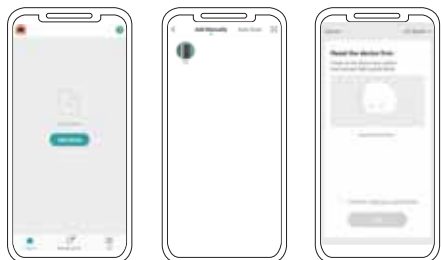
**SET Button:** Short press to treat manually, hold for 8 seconds to reset connection, light will start to blink, ready to connect Wi-Fi indicator light; Flashing green means connecting, Solid green means connection successful.



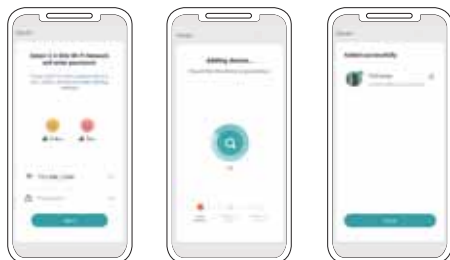
**Connection method:** The best using range is the smart product close to WIFI launcher within 10 meters



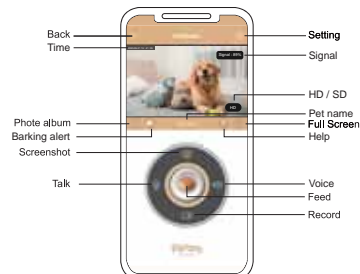
Please download and install "Faroro" APP on Google Play or App Store. Open "Faroro" APP, register your account and log in.



"Add Device", choose "Pet", confirm indicator rapidly blink and click "Next".



Select WIFI, enter password, click Next, waiting for "Adding device".



Treater app surface

### Product parameters

Product name: Intelligent Dog Camera Treater  
 Product size: 132\*130\*256mm  
 Net weight : 1.1kg  
 Barn reserves: 0.5L  
 Product materials: ABS  
 Camera: 135° HD night vision and wide angle camera  
 WIFI: 2.4G Only  
 APP installation requirement : Android 5.0 / IOS 7.0 or above  
 Power adapter: Input: AC100-240V, 50/60Hz, 0.4A  
 Output: DC 5.0V, 1000mA

### Technical specifications of the intelligent dog camera treater

Function/Item	Functional	Trouble Descriptions	
Intelligent Dog camera Treater	Set button	1. Quick press (shorter than 1s) to manually pop treat.	
		2. Under the configuration mode, the green lamp is flickering slowly (0.5s dark and 0.5s light).	
		3. Under the configuration mode, in case there's no food in the grain bucket, quick press (shorter than 1s) and the red and green lamps shall flicker alternately.	
		4. Under the configuration mode or the network is connected, long press this button for more than 8s, reset the treater.	
Red and green indicator lamp	Red lamp	Slow flickering	Configurable status
	Green lamp	Quick flickering	Connections to the network
	OFF	Normally ON	The network is connected
	Slow flickering	Normally ON	No food in the grain bucket, or the food is blocked
Treat outlet light	OFF	ON	Not feeding / Feeding

### CAUTION :

- Do not pull the power cord out directly when plugging in or unplugging the adapter.
- Do not put any foreign objects in the device.
- Do not disassemble this product by yourself.
- Keep out of reach of children.
- Do not use the adapter if the power cord is damaged or not working properly.
- Indoor use only.
- Dry food only for treat container. Suggested snack size is between 5-15 mm.
- This product contains electric components. It is NOT waterproof. DO NOT place the device in wet areas.
- This product does not apply to any use other than accompanying the purchaser's own pet.
- Warning: Check surrounding areas on "Faroro" app camera before dispensing treats to avoid dispensing towards human or pet's eyes.
- Warning: Pet treats are not to be consumed by children, please use caution and supervision when dispensing around children.
- Warning: Stop using the device and contact the customer service if there is a sign of malfunction such as abnormal odor, smoke, or heat.

### FAQs:

#### 1. Why is the treat not coming out when pressing the treat button from the App?

**Answer:**

- The treat container is out of treats please fill with treats.
- If the treat container is not empty, please check if the food outlet is blocked or damaged. Clean the food outlet with caution, if necessary.
- The network connection is delayed or interrupted. Please check your network connection and press the treat button again.

#### 2. The video does not play smoothly? What should I do?

**Answer:**

Please check your network connection and play the video again.

#### 3. Unable to login the existing account, what should I do?

**Answer:**

- Check if your network is connected appropriately.
- If necessary, delete the App, re-download the App, and try again.

This device complies with Part 15 of the FCC Rules. Operation is subject to the following two conditions: (1) this device may not cause harmful interference, and (2) this device must accept any interference received, including interference that may cause undesired operation

NOTE: This equipment has been tested and found to comply with the limits for a Class B digital device, pursuant to Part 15 of the FCC Rules. These limits are designed to provide reasonable protection against harmful interference in a residential installation. This equipment generates, uses and can radiate radio frequency energy and, if not installed and used in accordance with the instructions, may cause harmful interference to radio communications. However, there is no guarantee that interference will not occur in a particular installation. If this equipment does cause harmful interference to radio or television reception, which can be determined by turning the equipment off and on, the user is encouraged to try to correct the interference by one or more of the following measures:

- Reorient or relocate the receiving antenna.
- Increase the separation between the equipment and receiver.
- Connect the equipment into an outlet on a circuit different from that to which the receiver is connected.
- Consult the dealer or an experienced radio/TV technician for help.

Warning: changes or modifications not expressly approved by the party responsible for compliance could void the user's authority to operate the equipment

Radiation exposure statement: this equipment complies with FCC radiation exposure limits set forth for an uncontrolled environment. This equipment should be installed and operated and operated with minimum distance 20cm between the radiator and your body