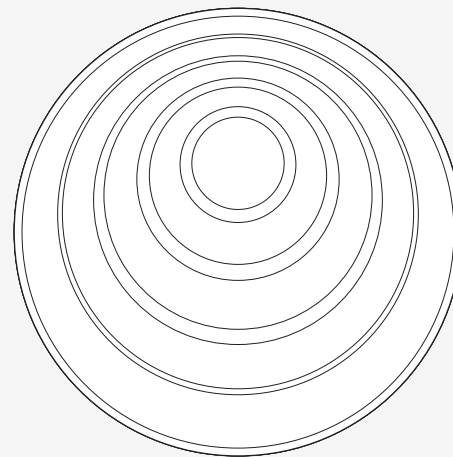


Quick start guide



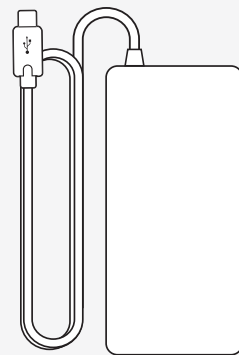
What's included



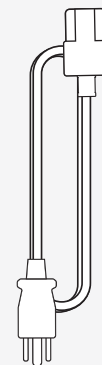
E1 device



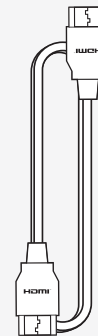
Remote



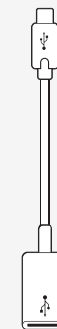
USB-C
power supply



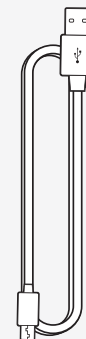
Power cable



HDMI cable

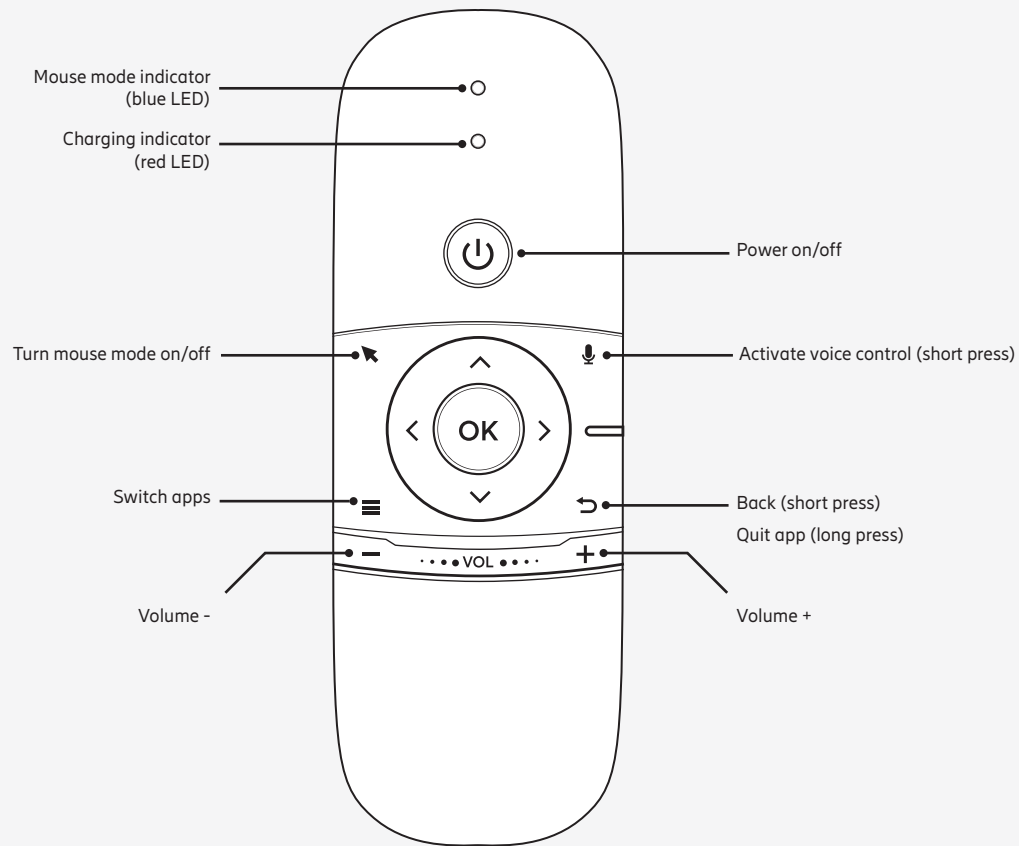


USB-C to
USB-A adapter

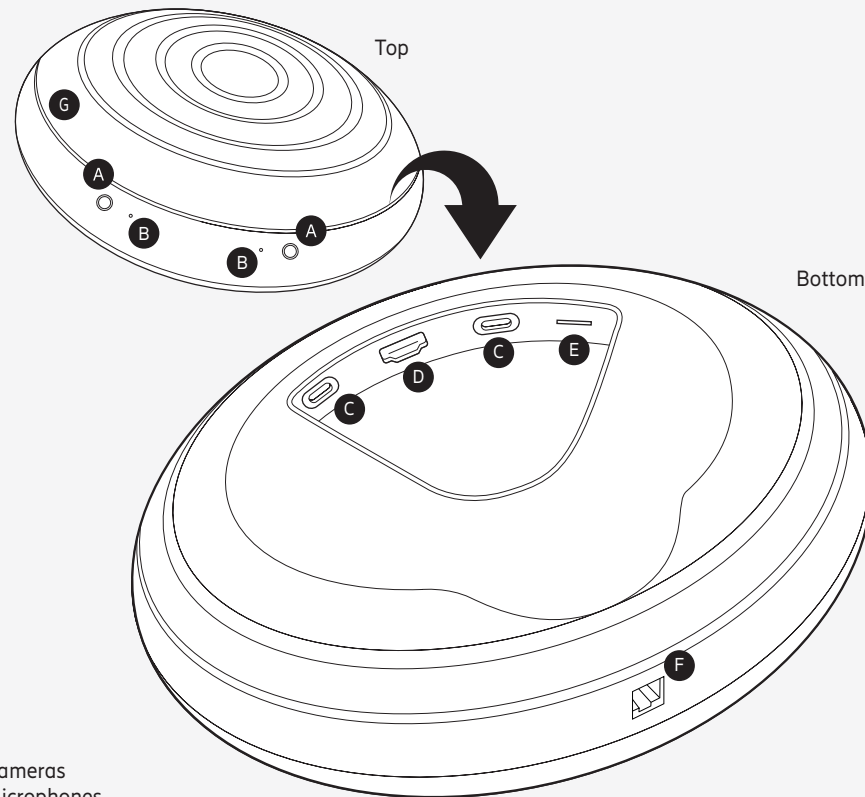


Micro-USB
cable

Remote

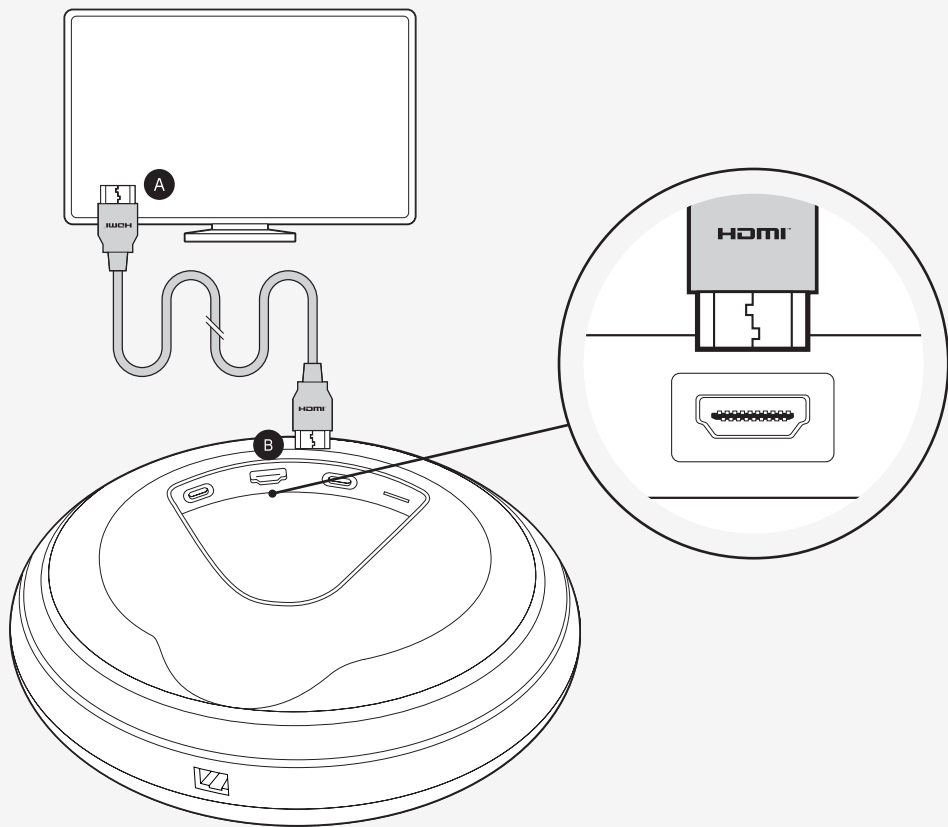


1 Turn upside down



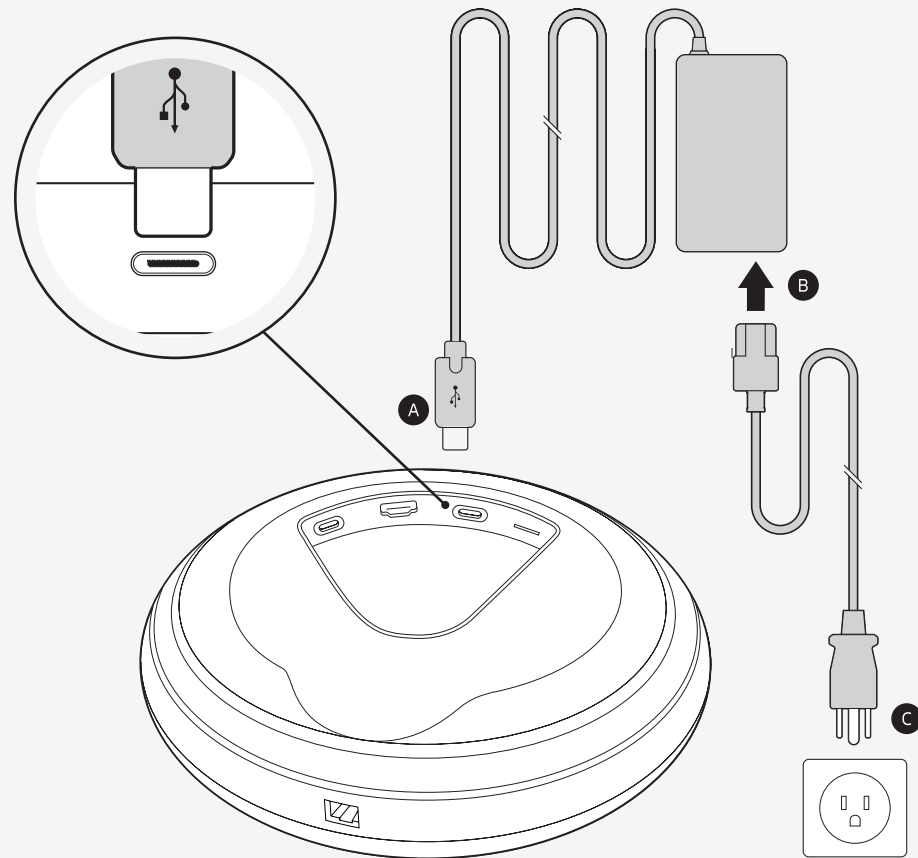
- A Cameras
- B Microphones
- C USB-C ports
- D HDMI port
- E MicroSD slot
- F Ethernet port(s) (if you have a router model it has two Ethernet ports)
- G Activity Status Display

2 Connect the E1 device to your TV



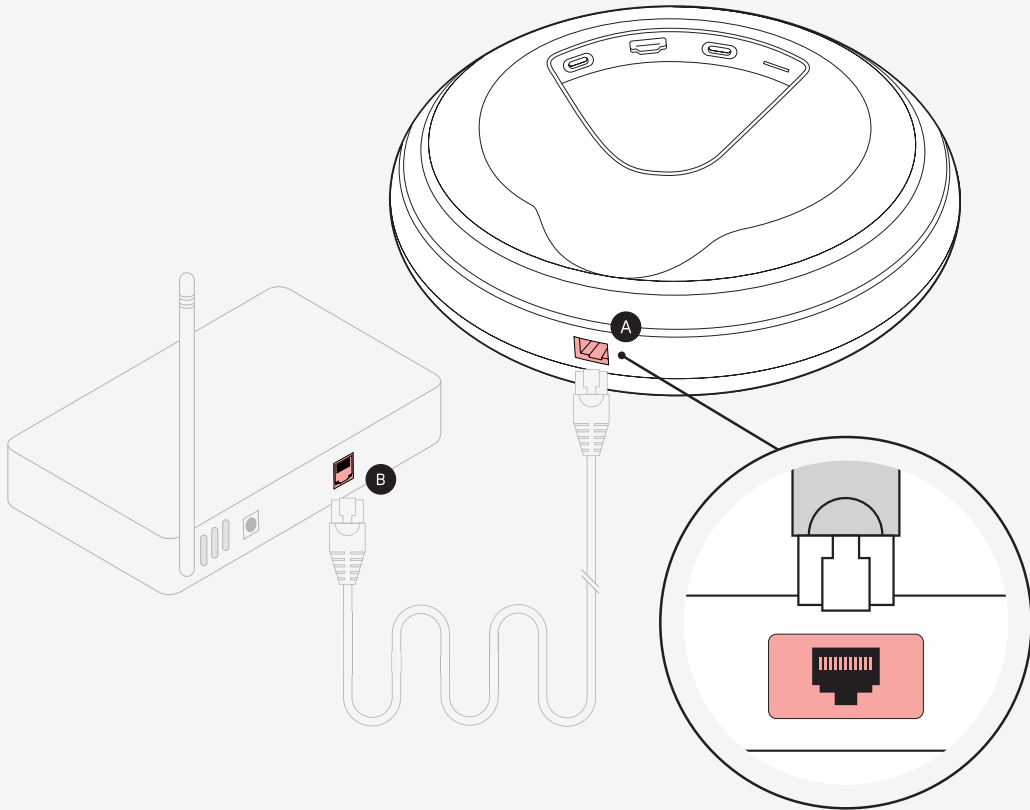
- A Plug an HDMI cable into your TV
- B Plug the other end of the cable into the HDMI port on the bottom of the E1 device

3 Connect the power supply



- A Connect power supply cable to USB-C port
- B Connect power cable to power supply
- C Plug into wall outlet

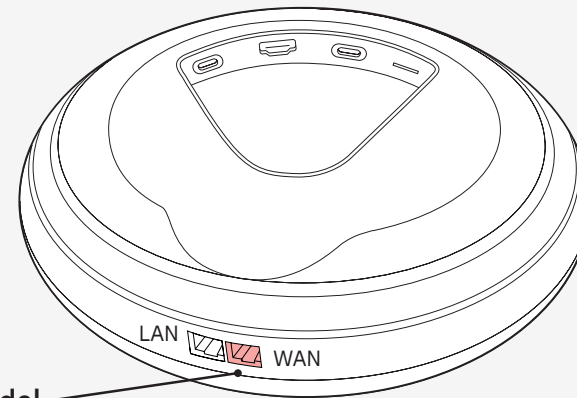
*** Connect via Ethernet**
(optional)



- A Plug an Ethernet cable into the E1 device
- B Plug the other end of the cable into your modem

If you would rather connect via Wi-Fi, you may do so using the on-screen setup once the E1 device is connected to your TV.

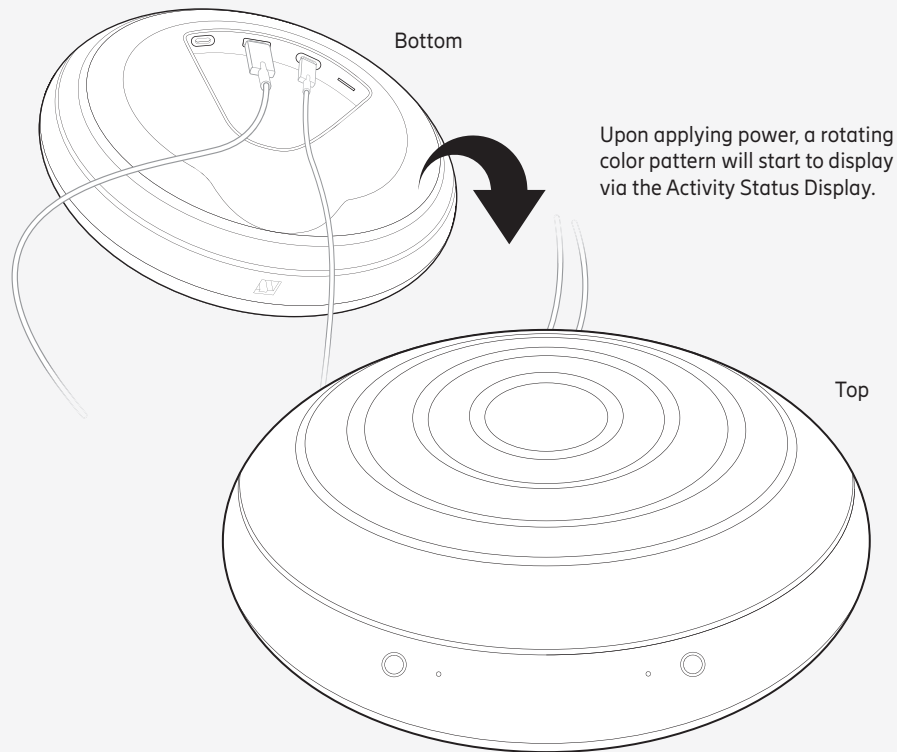
*** Use as a wireless access point**
(optional - router model only)



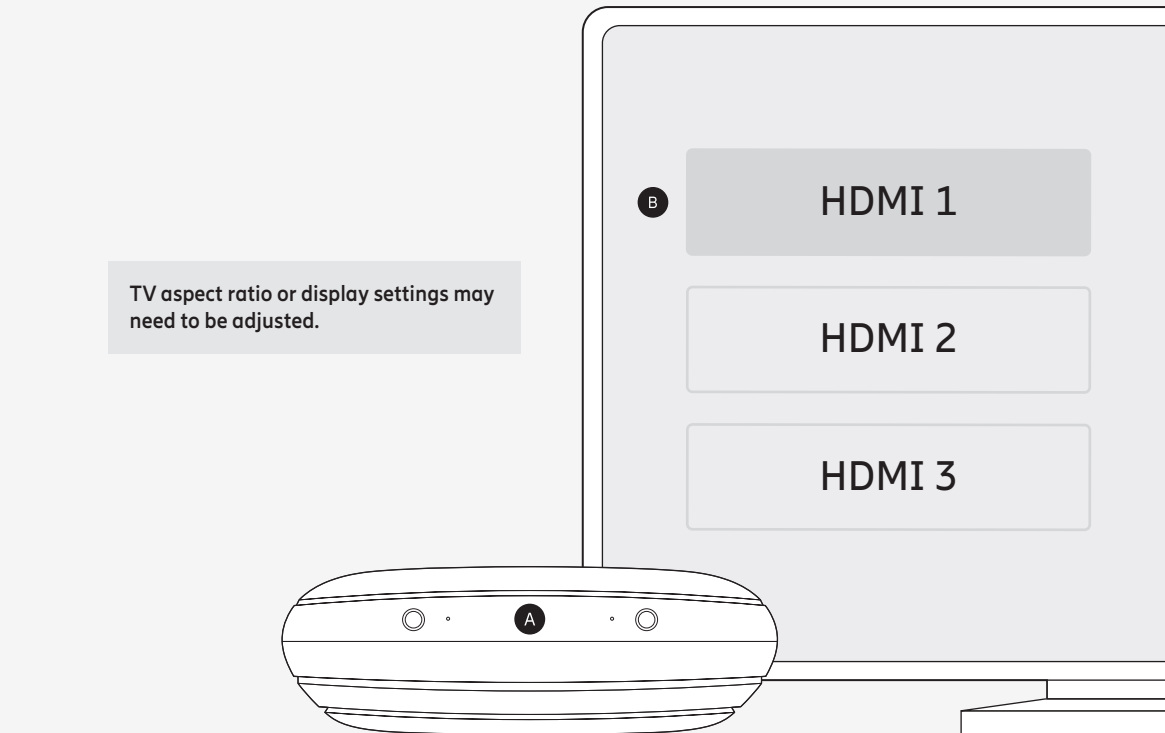
Router model

If you have a router model, you may use it as a wireless access point to connect other Wi-Fi devices. Refer to the router setup guide for more information.

4 Turn right side up



5 Placement



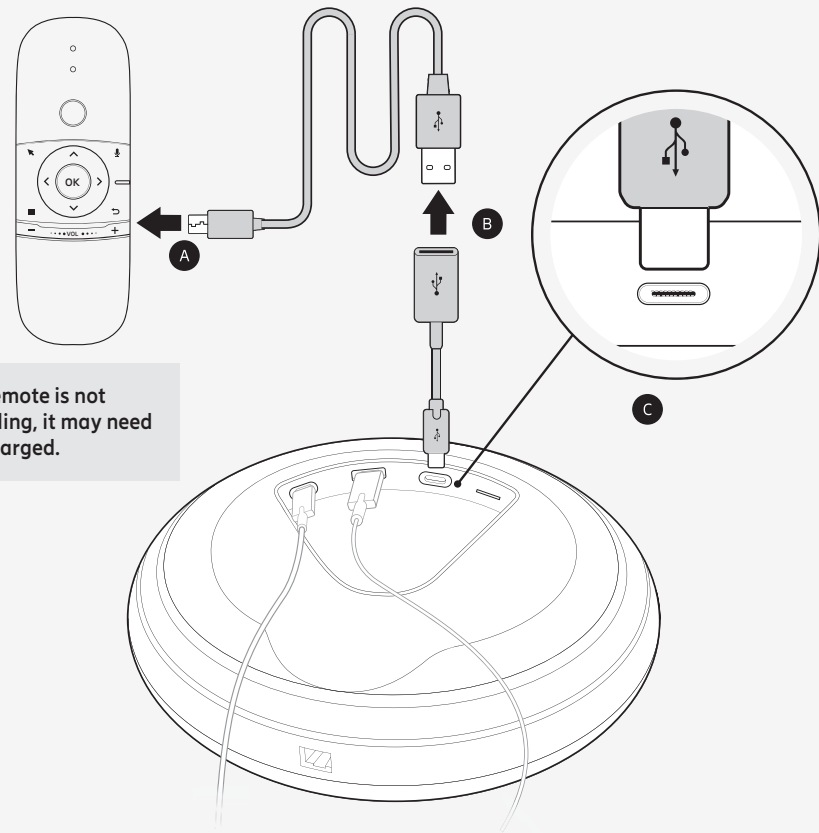
- A Position the E1 device right side up with cameras facing forward, and ensure the cameras have an unobstructed view of the room
- B Power on your TV, then select the HDMI input connected to the E1 device

✓ Success

Setup screen should appear on your TV.
Press **OK** on the remote to begin. Follow the instructions on your screen.



🔋 Charging the remote



If the remote is not responding, it may need to be charged.

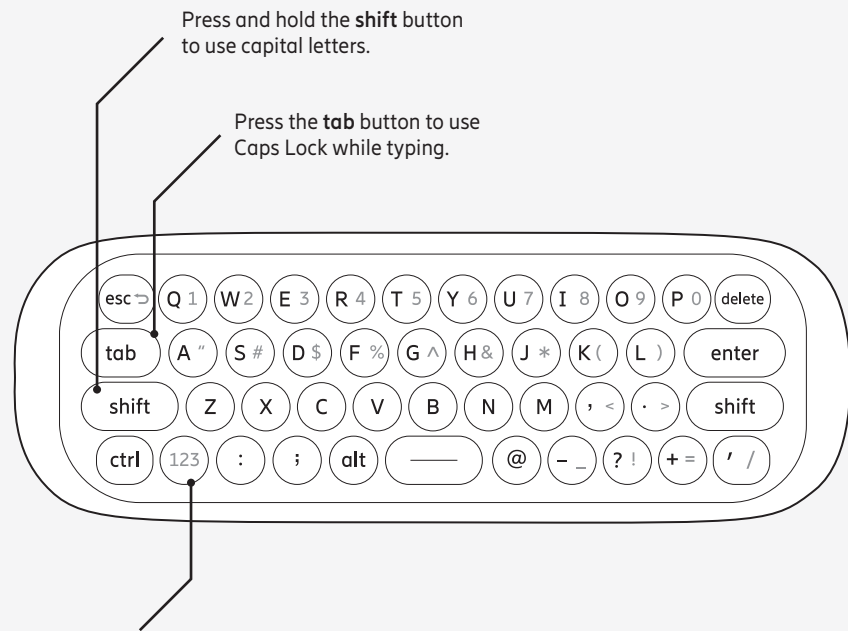
- A Connect Micro-USB cable to remote
- B Connect Micro-USB cable to USB-C to USB-A adapter
- C Connect USB-C adapter to USB-C port

Tip: Micro-USB cable can be plugged directly into any 5-Volt USB outlet





Remote keyboard

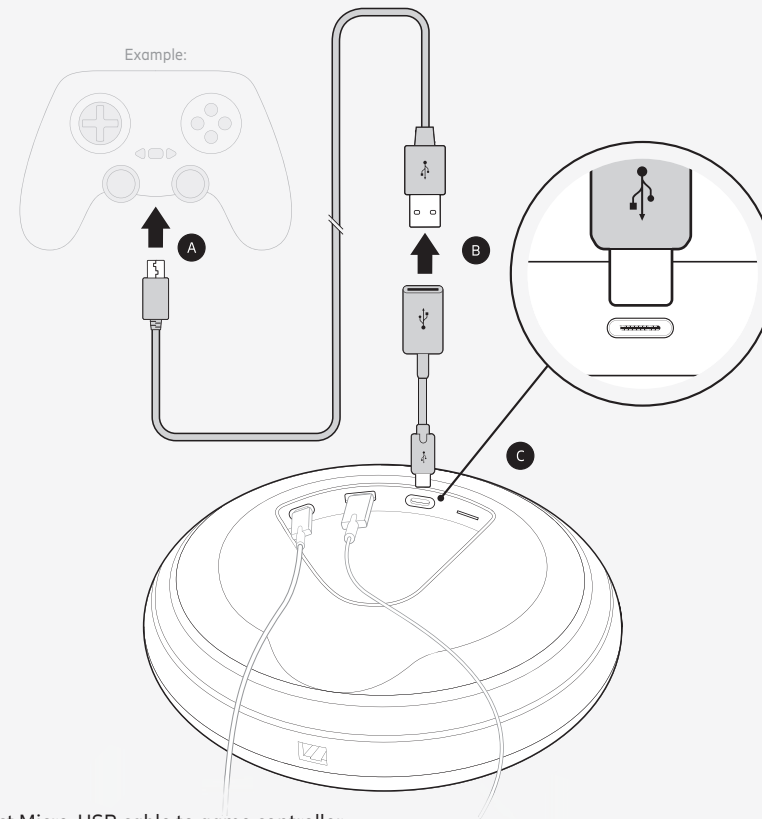


To use numbers and symbols in blue, hold down the 123 button while typing.



Charging a game controller

(game controller not included)



- A Connect Micro-USB cable to game controller
- B Connect Micro-USB cable to USB-C to USB-A adapter
- C Connect USB-C adapter to USB-C port

Tip: Micro-USB cable can be plugged directly into any 5-Volt USB outlet




Common questions

Why does my TV screen say "no input"?

Your TV may be set to the incorrect input or source. There's a quick fix for this! Just press the "input" or "source" button on your TV remote until you select the HDMI connection that matches the port your HDMI cable is plugged into on your TV.

Why is there a mouse cursor on my screen?

If the remote moves a mouse cursor freely around the screen, it is in "mouse mode". Mouse mode is active if the blue LED on the remote is lit. To turn mouse mode on/off, press the mouse button  on the remote.

How do I pair my remote?

The remote is pre-paired to the E1 device. If the blue LED on the remote is flashing slowly, pairing has been lost.

To re-pair:

- Turn off the E1 device and unplug power.
- Simultaneously press Volume + and - buttons on remote until the blue LED flashes rapidly.
- Plug in and power up the device.
- Hold the remote approximately 10 cm from the device during the pairing process.
- When the remote is paired, the blue LED will stop flashing and light up solid blue.



Keep in mind



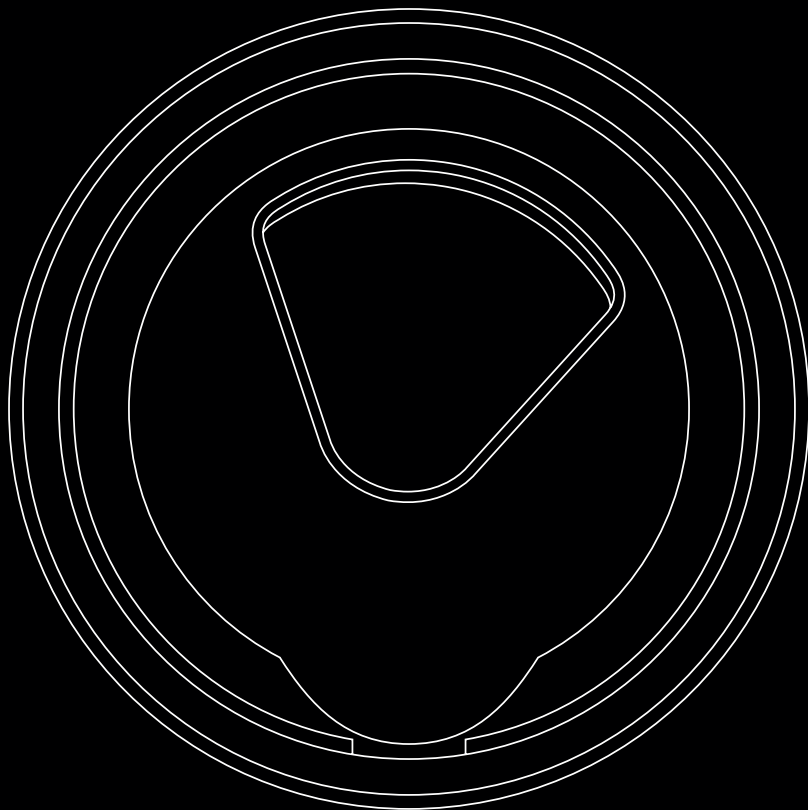
Keep the upper vents clear and open. To prevent overheating, do not cover or place objects on top.



Do not use in the bathtub.



Have a good time, and enjoy.



LZT 138 2195





Safety guide



Safety guide

Before installation or use of the E1 device, carefully read all of the instructions in this safety guide for safe operation of the device. This safety guide contains important warnings and cautions regarding safety.

Improper setup, care, and operation of the E1 device may lead to the risk of death, injury, or damage to the device or other property, including device accessories. After reading, keep this safety guide handy for future reference.

Safety symbols

The symbols shown below are internationally accepted symbols that warn of potential hazards with electrical devices.

	The exclamation point within a triangle warning sign alerts you to important safety warnings and instructions in the product guides.
	The lightning flash within a triangle warning sign alerts you of dangerous voltage inside the E1 device. It warns you of the potential risk of electrical shock to persons.

Important safety instructions

When using the E1 device, always follow the basic safety precautions to reduce the risk of fire, electric shock and injury to persons, including the following:

1. READ these instructions.
2. FOLLOW all instructions
3. KEEP these instructions.
4. HEED all warnings.
5. DO NOT use the E1 device near water.
6. DO NOT expose the E1 device to dripping or splashing and ensure that no objects filled with liquids, such as vases, are placed on the device.
7. CLEAN ONLY with dry cloth.
8. DO NOT block any ventilation openings.
9. DO NOT install near any heat sources such as radiators, heat registers, stoves, or other equipment that produce heat.
10. DO NOT place naked flame sources -- such as candles -- on the E1 device.
11. DO NOT defeat the safety purpose of the polarized or grounding-type plug. A polarized plug has two blades with one wider than the other. A grounding-type plug has two blades and a third grounding prong. The wide blade or the third prong is provided for your safety. If the provided plug does not fit into your outlet, consult an electrician for replacement of the obsolete outlet.
12. PROTECT the power cable from being walked on or pinched particularly at plugs, convenience receptacles, and the point where they exit from the E1 device.
13. DO NOT overload wall outlets or extension cords beyond their rated capacity as this can cause electric shock or fire.

14. DO NOT USE AND UNPLUG the E1 device during an electrical storm or when unused for long periods of time. There may be a remote risk of electric shock from lightning.
15. To completely disconnect the E1 device from the AC Mains, disconnect the power supply cable plug from the AC outlet.
16. USE the appointed service personnel for any product service needed. Servicing is required when the E1 device has been damaged in any way, such as a power supply cable or plug is damaged, liquid has been spilled or objects have fallen into the device, the device has been exposed to rain or moisture, does not operate normally, or has been dropped.
17. ONLY USE attachments/accessories specified by the manufacturer.

WARNING: Do not open the E1 device! Risk of electrical shock. Voltages in the E1 device are hazardous to life. No user-serviceable parts inside.

Do not attempt to take apart, open, service, or modify the E1 device, power supply, or accessories. Doing so could present the risk of electric shock, fire or other hazard, or damage to the E1 device, power supply, or accessories.


Safety notice


The E1 device is intended for indoor use only.


“CAUTION” Risk of explosion if the RTC battery is replaced by an incorrect type.

To operate the E1 device, external surfaces do not need to be touched for longer than 1 second.


The E1 device is intended to be supplied by a Certified USB Type-C AC power adapter suitable for use at Tma 40 degree C whose output complies with LPS or PS2 and meets ES1, non-hazardous energy level, and is rated O/P: 5Vdc/3A or 9Vdc/ 3A or 15Vdc/ 3A or 20Vdc/ 5A. Use only the manufacturer supplied AC adapter approved for use with the E1 device. Use of another AC adapter may change the compliance of the E1 device and may present risk of fire or electric shock.

 **WARNING** Do not use the E1 device near water, for example, in a wet basement or near a swimming pool.

 **WARNING** Avoid using the E1 device during an electrical storm. There may be a remote risk of electric shock from lightning.

 **WARNING** Do not block air ventilation holes.

 **WARNING** Do not touch the bottom metal parts.

	Hot parts! Fingers can be burned when handling hot parts. Wait 20 minutes after switching off the E1 device before handling parts.
---	--

Installation & placement

Verify the E1 device has not been dropped, altered, transported or shipped without proper packaging, or otherwise treated without care before installing the device.

Do not install (or use) the E1 device on an unstable surface. The E1 device may fall, causing serious bodily injury and serious damage to the device.

Do not place objects on the E1 device after installation. Place the E1 device near a main power supply outlet and make sure that you can easily access the power breaker switch.

Avoid smoke and dust. Do not use in smoky or dusty locations. Smoke and dust can damage the E1 device.

Place the E1 device on a flat and even surface.

The E1 device should not be placed close to other pieces of equipment that produce heat or located such that it is subject to direct sun light.

Do not use the E1 device in places which are extremely hot, cold, dusty or humid.

Do not place the E1 device or power supply on a bed, sofa, or other soft surface that may block openings.

Do not remove the E1 device outer plastic enclosure during normal use.

The E1 device internal USB port is intended for air mouse receiver connection purpose.

Operation

Do not block any ventilation openings on the E1 device or power supply.

Slots and openings in the E1 device are for ventilation and must never be blocked or covered since they ensure reliable operation of the device itself and protect it from overheating.

Do not restrict the air-flow of the E1 device by placing it in a place with poor ventilation, by covering it with a cloth or by placing it on a carpet.

Do not place the E1 device or power supply in a confined space, such as a bookcase, rack, or stereo cabinet, unless the space is well ventilated.

Use only the manufacturer supplied AC adapter approved for use with the E1 device. Use of another AC adapter may change the compliance of the E1 device and may present risk of fire or electric shock.

Any part of the user's body, other than the hands, should be kept at a distance of 35 cm or more away from the E1 device during installation.

All operational modes of AI board: 2.4GHz: 802.11b, 802.11g, 802.11n (HT20), Zigbee

The frequency and the maximum transmitted power in EU are listed below:
2412-2472MHz: 17.48 dBm
2405-2480MHz: 13 dBm
All operational modes: 2.4GHz, 802.11bgn+ BT, 5GHz
2412-2472MHz : 19 dBm
5180-5825MHz : 20.3dBm.

Maintenance

Periodically carry out visual inspections to make sure that no obvious damage has occurred to the E1 device.

Disconnect the E1 device from the electrical supply and contact your service provider if any of the following conditions are detected:

- Failure to function as expected
- Noticeable signs of overheating
- Signs of deterioration of the insulation on electrical conductors
- Damage is found to the power cable or connector
- Liquid has been spilled onto, or an object has fallen into, the E1 device
- The E1 device has been exposed to water or other abnormal contamination

⚠ Power supply warning

The power supply is for indoor use only. The equipment power supply cord shall be connected to a socket-outlet with earthing connection. Only use the power supply included with the E1 device. Operation from voltages other than those indicated may cause irreversible damage to the E1 device and void the device warranty. If you are unsure of the correct operational voltage, please contact the company from whom you purchased or received the E1 device.

Do not attempt to repair or use a damaged power supply.

Do not immerse the power supply in water or subject it to physical abuse.

⚠ Battery warning

The E1 device contains an internal, rechargeable battery that is not replaceable. Do not attempt to replace the battery. Replacing batteries incorrectly may increase the risk of fire or chemical burns to skin and eyes.

Do not disassemble, damage, modify, or expose batteries to conducting materials, moisture, liquid, or heat. Always discard batteries according to local laws. In most cases that will be in a waste bin for electronic devices.

Keep batteries away from children.

⚠ Cables and cords warning

The E1 device's cables and cords present tripping and entanglement hazards. They should be organized neatly to reduce the risk of tripping and entanglement, which can lead to injury to persons and property. Avoid placing cables and cords in frequently used locations where children or pets might play. Do not allow children or pets to play with cables or cords.

The cables and cords can also present risk of fire or electric shock. Never pull on the power cable to disconnect the E1 device as this can damage the power cable. Do not abuse the power cable by bending, pinching, or knotting the power cable or by exposing it to heat.

Unplug the E1 device when there is a lightning storm or when it is unused for extended periods.

If a power cable becomes damaged, stop using it immediately.

Use by children & playing safe

The E1 device should not be used by children without adult supervision. Make sure children play safely and within their limits. Parents should inspect the E1 device and any accessories for damage before allowing children to use the device. Parents should instruct children in the correct and safe use of the E1 device.

WARNING: CHOKING HAZARD--Small Parts. The E1 device contains small parts that may be a choking hazard for children 12 and under.

Important health warnings about playing video games

WARNING! Gameplay with the E1 device may require varying amounts of movement. To reduce the risk of injury or property damage, take the following precautions before playing:

- Make sure you have enough space to move freely.
- Look in all directions (right, left, forward, backward, down, and up). Make sure there is nothing you might trip on—toys, furniture, or loose rugs, for example.
- Make sure your play space is far enough away from windows, walls, stairs, etc.
- Be aware of children and pets in the area. If necessary, move objects or people out of the play space.

While playing:

- Stay far enough away from your TV to avoid contact.

- Keep enough distance from other players, bystanders, and pets. This distance may vary between games, so take account of how you are playing when determining how far away you need to be.
- Stay alert for objects or people you might hit or trip over. People and objects can move into the area during play, so always be alert to your surroundings.
- Make sure you always have good footing while playing:
 - Play on a level floor with enough traction for game activities.
 - Make sure to use proper footwear for gaming or are barefoot, if appropriate. Do not wear high-heels, flip-flops, etc.

Don't overexert yourself:

Gameplay with the E1 device may require varying amounts of physical activity. Consult a doctor before using the E1 device if you have any medical condition or issue that affects your ability to safely perform physical activities, or if you:

- are or may be pregnant,
- have heart, respiratory, back, joint, or other orthopedic conditions,
- have high blood pressure,
- have difficulty with physical exercise, or
- have been instructed to restrict physical activity.

Consult your doctor before beginning any exercise routine or fitness regimen that includes using the E1 device.

Do not play under the influence of drugs or alcohol.

Ensure your balance and physical abilities are adequate for any movements expected to be undertaken while gaming.

Take breaks periodically

Stop and rest if your muscles, joints, or eyes become tired or sore. If you experience excessive fatigue, nausea, shortness of breath, chest tightness, dizziness, discomfort, or pain, STOP USING IMMEDIATELY and consult a doctor.

Photosensitive seizures

A very small percentage of people may experience a seizure when exposed to certain visual images, including flashing lights or patterns that may appear in video games. Even people who have no history of seizures or epilepsy may have an undiagnosed condition that can cause these “photosensitive epileptic seizures” while watching video games.

These seizures may have a variety of symptoms, including lightheadedness, altered vision, eye, or face twitching, jerking or shaking of arms or legs, disorientation, confusion, or momentary loss of awareness. Seizures may also cause loss of consciousness or convulsions that can lead to injury from falling or striking nearby objects.

Immediately stop playing and consult a doctor if you experience any of these symptoms. Parents should watch for or ask their children about the above symptoms. The risk of photosensitive epileptic seizures may be reduced by taking the following precautions:

- Sit or stand farther from the TV screen.
- Use a smaller TV screen.
- Play in a well-lit room.
- Do not play when you are drowsy or fatigued.
- If you or any of your relatives have a history of seizures or epilepsy, consult a doctor before playing.

Musculoskeletal disorders

Use of game controllers, keyboards, mice, or other electronic input devices may be linked to serious injuries or disorders.

When playing video games, as with many activities, you may experience occasional discomfort in your hands, arms, shoulders, neck, or other parts of your body. However, if you experience symptoms such as persistent or recurring discomfort, pain, throbbing, aching, tingling, numbness, burning sensation, or stiffness, DO NOT IGNORE THESE WARNING SIGNS. PROMPTLY SEE A QUALIFIED HEALTH PROFESSIONAL, even if symptoms occur when you are not playing a video game. Symptoms such as these can be associated with painful and sometimes permanently disabling injuries or disorders of the nerves, muscles, tendons, blood vessels, and other parts of the body. These musculoskeletal disorders (MSDs) include carpal tunnel syndrome, tendinitis, tenosynovitis, vibration syndromes, and other conditions.

While researchers are not yet able to answer many questions about MSDs, there is general agreement that many factors may be linked to their occurrence, including medical and physical conditions, stress and how one copes with it, overall health, and how a person positions and uses their body during work and other activities (including playing a video game). Some studies suggest the amount of time a person performs an activity may be a factor.

Base unit

Main processor	AMD® Ryzen™ Embedded V1807B AMD® Zen™ 4 Cores / 8 Threads, 3.3 GHz (3.6GHz boost) AMD® Vega™ GPU 2.2 Teraflops graphics engine
Memory	DDR4-3200 8 GB
Storage	512 GB NVMe SSD (>2 GB/s read speed, >1.5 GB/s write speed)
USB and power	2x USB-C with USB 3.1 Gen 2, DP Alt mode and SuperSpeed+ USB with bi-directional Power Delivery support
Display output	1x HDMI 2.0b with HDCP2.2 2x DP Alt mode over USB-C
Wi-Fi	802.11a/b/g/n/ax MIMO 2x2, high output level
Bluetooth®	Bluetooth® 5.0
Ethernet	Gigabit LAN
Smart Home	Zigbee (optional)
Voice support	3-microphone far-field and near-field voice support
Camera	2x HD cameras with attached computer vision processor (optional)
Remote	D-pad, keyboard, and pointer control with rechargeable Li battery and USB charge cable
Electrical rating	100-240 V 1.5 Amax, 50/60 Hz, 85W
Power supply	100W USB-C 1.5 meter cable & detachable 1 meter AC cable
Noise level	<28 dBA ISO 7779 ("super quiet") under full load <22 dBA (silent) during media playback
Expansion slots	M.2 slot for NVMe or SATA SSD. USB-A for internal dongle. PCIe for accessories.
Operating temperature	41 °F to 95 °F (5 °C to 35 °C)
Dimensions	Diameter: 8.50 inch (216 mm), Height: 2.53 inch (64.3 mm)
Weight	4.73 lbs. (2.15 kg)

Router unit

Main processor	AMD® Ryzen™ Embedded V1807B AMD® Zen™ 4 Cores / 8 Threads, 3.3 GHz (3.6GHz boost) AMD® Vega™ GPU 2.2 Teraflops graphics engine
Memory	DDR4-3200 8 GB
Storage	512 GB NVMe SSD (>2 GB/s read speed, >1.5 GB/s write speed)
USB and power	2x USB-C with USB 3.1 Gen 2, DP Alt mode and SuperSpeed+ USB with bi-directional Power Delivery support
Display output	1x HDMI 2.0b with HDCP2.2 2x DP Alt mode over USB-C
Wi-Fi	Mesh 802.11a/b/g/n/ac MIMO 2x2, high output level
Router type	EasyMesh™ Wi-Fi standard, MIMO 2x2, high output level 2.4 GHz, 5GHz low band and separate 5GHz high band
Bluetooth®	Bluetooth® 4.2
Ethernet	Gigabit LAN and WAN port
Fixed wireless	4G LTE Advanced or 5G 3GPP module (optional)
Access	Zigbee (optional)
Smart Home	Zigbee (optional)
Voice support	3-microphone far-field and near-field voice support
Camera	2x HD cameras with attached computer vision processor (optional)
Remote	D-pad, keyboard, and pointer control with rechargeable Li battery and USB charge cable
Electrical rating	100-240 V 1.5 Amax, 50/60 Hz, 95W
Power supply	100W USB-C 1.5 meter cable & detachable 1 meter AC cable
Noise level	<28 dBA ISO 7779 ("super quiet") under full load <22 dBA (silent) during media playback
Expansion slots	M.2 slot for NVMe or SATA SSD. USB-A for internal dongle. PCIe for accessories.
Operating temperature	41 °F to 95 °F (5 °C to 35 °C)
Dimensions	Diameter: 8.50 inch (216 mm), Height: 2.53 inch (64.3 mm)
Weight	5 lbs. (2.3 kg)

Regulatory Information

Federal Communication Commission Interference statement

This equipment has been tested and found to comply with the limits for a Class B digital device, pursuant to Part 15 of the FCC Rules. These limits are designed to provide reasonable protection against harmful interference in a residential installation. This equipment generates, uses and can radiate radio frequency energy and, if not installed and used in accordance with the instructions, may cause harmful interference to radio communications. However, there is no guarantee that interference will not occur in a particular installation. If this equipment does cause harmful interference to radio or television reception, which can be determined by turning the equipment off and on, the user is encouraged to try to correct the interference by one of the following measures:

- Reorient or relocate the receiving antenna.
- Increase the separation between the equipment and receiver.
- Connect the equipment into an outlet on a circuit different from that to which the receiver is connected.
- Consult the dealer or an experienced radio/TV technician for help.

FCC caution: Any changes or modifications not expressly approved by the party responsible for compliance could void the user's authority to operate this equipment. This device complies with Part 15 of the FCC Rules. Operation is subject to the following two conditions: (1) This device may not cause harmful interference, and (2) this device must accept any interference received, including interference that may cause undesired operation.

IMPORTANT NOTE:

FCC Radiation Exposure statement: This equipment complies with FCC radiation exposure limits set forth for an uncontrolled environment. This equipment should be installed and operated with minimum distance 35cm between the radiator & your body.

We understand that privacy is an important issue for users of the E1 device.

The scope of this notice is related to Ericsson processing personal data in the role of manufacturer of the E1 device. Any personal information provided by you in connection with the usage of the E1 device will be treated by Ericsson in accordance with applicable data protection and privacy laws (including the General Data Protection Regulation, EU Regulation 2016/679, or "GDPR"), and in accordance with our Privacy Notice which can be accessed in the E1 device preferences.

The Privacy Notice is designed to help you understand what personal information we collect, and how we handle and use that information.

