

5. placing

Laptop video input device.

6. Fan compartment

The fan lattice is where the hot air diffuses.
Do not block the air passage completely.

7 b. USB interface

Used to connect USB devices.

8. Card reader slot

SD/MS/MMC/ card reader.

9. Dc-in socket

Connect the power adapter.

10 .VGA port

Used to connect external displays.

11. Microphone interface

For external microphone.

12. Headphone jack

For external headphones.

13. The battery pack

Power can be supplied to the computer when no external power supply is connected.

14. Under cover

This lower cover contains memory, hard disk, and other devices.

15. May. Dual channel loudspeaker

The built-in speakers can produce sound in stereo.

Special note

Do not place anything between the D LCD screen and the keyboard, such as pencils, files, etc. This will damage or scratch the D LCD screen.

Do not wipe D LCD screen with corrosive cleaner, which will damage the screen.

2.3 Unpacking and inspection

Please remove the packing carefully to take out the machine and other accessories. If any damage or omission is found, Please contact the distributor immediately. Please keep the original packing materials. In case of replacement.

Normally you will have the following parts (see the packing list for details)

1. Laptop
2. Power adapter
3. The instruction manual
4. The warranty card
5. Battery (installed in the computer, there is a plug to block power supply contact, please remove the battery and take out the plug before use Pack)

3. Use common sense

3.1 system status indicator light

LED lights	Instruction content
Power indicator	This product only retains the power indicator, indicating that the motherboard is powered.

3.2 stop the computer

When you have finished your work,
you can turn off the computer's power or put it into wait or sleep mode:

Stop mode	The method of	Restart or use the method again
Directly closed The power supply	Please follow the operating system shutdown procedure. This can prevent the loss of data or software damage. In case the system has a hardware or software problem And crash, then use the power button shutdown.	Use the power button.
Waiting for the (Standby)	Depending on your Settings in Windows, Enter standby mode in the following manner: <ul style="list-style-type: none"> • Close the computer cover • Use the power button 	Use the power button.
Bormancy (Hibernation)	Depending on your Settings in Windows, Enter standby mode in the following manner: <ul style="list-style-type: none"> • Close the computer cover • Use the power button 	Use the power button.

If you choose to stop your computer in a wait or sleep state,
The next time you use the computer, you will be able to return to the state before you stopped.

3.3 keyboard functions

Function (quick and easy)

The key action	Function
Fn+Esc	Switch from work to sleep or standby
Fn+F1	Open/close the wireless card
Fn+F2	Open/close the touchpad
Fn+F3	The volume decreases
Fn+F4	The volume increase
Fn+F5	The mute switch
Fn+F6	Backlit decrease

Fn+F7	Backlit increase
Fn+F8	Turn on/off the camera
Fn+F9	Pause
Fn+F10	Insert
Fn+F11	PrtSc
Fn+F12	NumLk
Fn+Delete	Cut the screen

Built-in number pad

Pressing Fn+ NumLock can start the internal key numeric keyboard, and the number is displayed in the upper right corner of the key.

The numeric keypad contains keys for addition, subtraction, multiplication and division.

One more press of Fn+NumLock will restore the original keyboard function.

3.4 the touchpad

The built-in trackpad is a PS/ 2-compatible positioning device with a surface that feels mobile. Simply move your finger over the surface of the trackpad and the cursor will follow.

3.5 screen

For your comfort, your laptop USES an LED LCD screen.

It supports high resolution and true color features. Bring you extraordinary visual shock.

Extend screen life

Follow these guidelines to extend screen life.

1. Set the screen brightness to the minimum comfortable viewing brightness.
2. When using on a desk, connect an external monitor and turn off the laptop's display screen.
3. Do not turn off the power management option to enter pause mode.
4. If you are using ac power and do not have an external monitor, switch to pause mode when not in use.

【note】 to extend your battery life, set the brightness to the minimum for comfortable viewing, This allows the internal light source to use less electricity.

3.6 the network card

Turn on or off the wireless network

Your computer has installed a built-in wireless network card,
please follow the instructions of the operating system for wireless network
Set and join. (please consult your local wireless network service provider)
Your computer needs time to connect wirelessly.

4 BIOS(basic input and output system) Settings

In this chapter, we will teach you how to enter the BIOS setup program and Settings. Various hardware control options will you also learn how to use the built-in Safety protection Settings.

【Setup utility is the BIOS (basic I/O system) built into your laptop. The hardware state program in. It can perform and maintain many hardware functions. It is software that operates in a menu mode, allowing you to easily set and change Settings.

The BIOS contains the factory preset value for the laptop. However, There is still a chance that you will need to modify the preset values in the BIOS. When hardware changes, For example, upgrades, temporary conditions, or when you decide to customize your hardware Settings to meet specific requirements, You may need to start the BIOS setup program.

4.1 use the BIOS Setup method

You must execute the S BIOS

Boot test found problems,

A message appears on the screen asking you to perform BIOS Settings.

You want to revert to the default.

You change the Settings for specific hardware.

You change the Settings to get the best system performance.

To perform the BIOS setting, when the computer is turned on,
Press Delete.

How to choose

For a project, you must go through two or three layers of options

To complete the setup. Most of these options must pass

Three options: menu title, drop-down menu, and submenu.

Use the keyboard to move and make choices.

You can see the keyboard information at the bottom right of the screen.

4.2 MAIN Settings

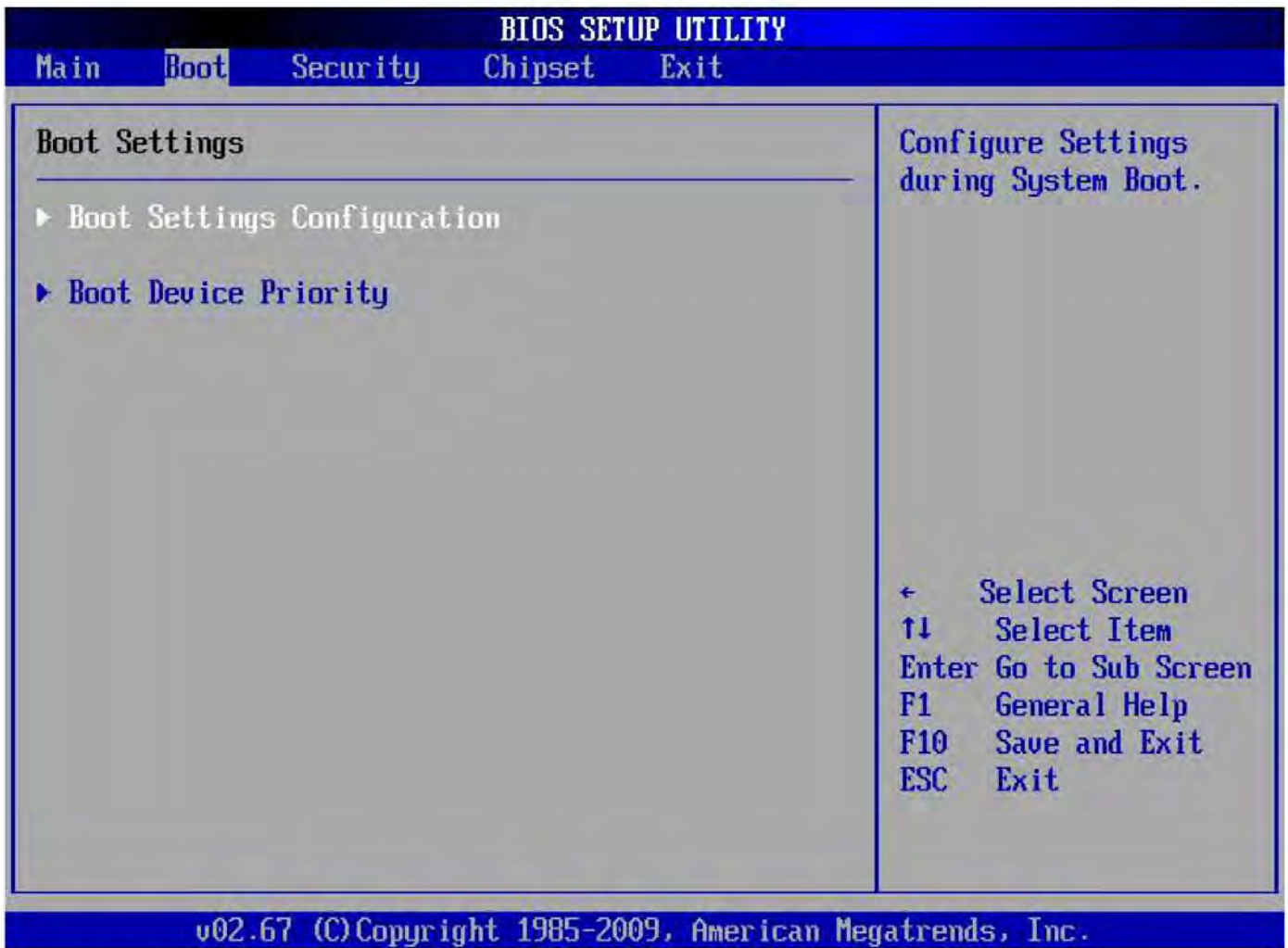
BIOS SETUP UTILITY	
Main	Boot Security Chipset Exit
System Overview	Use [ENTER], [TAB] or [SHIFT-TAB] to select a field.
AMIBIOS	Use [+] or [-] to configure system Time.
Bios Version: 100E	
Build Date : 2010.03.01	
Ec Version : E10UD	
Build Date : 2010.02.24	
Processor	
Speed :255MHz	
Count :255	
System Memory	← Select Screen
Size :1015MB	↑↓ Select Item
	+ - Change Field
	Tab Select Field
System Time [00:59:47]	F1 General Help
System Date [Sun 01/24/2010]	F10 Save and Exit
	ESC Exit
v02.67 (C) Copyright 1985-2009, American Megatrends, Inc.	

System Time: System time setting

System Date: System period setting

System Memory: System memory capacity

4.3 BOOT (Startup screen and sequence setting of startup equipment)



A、 Boot Setting Configuration: Enable option configuration.

The sub-menu is as follows, usually by default.

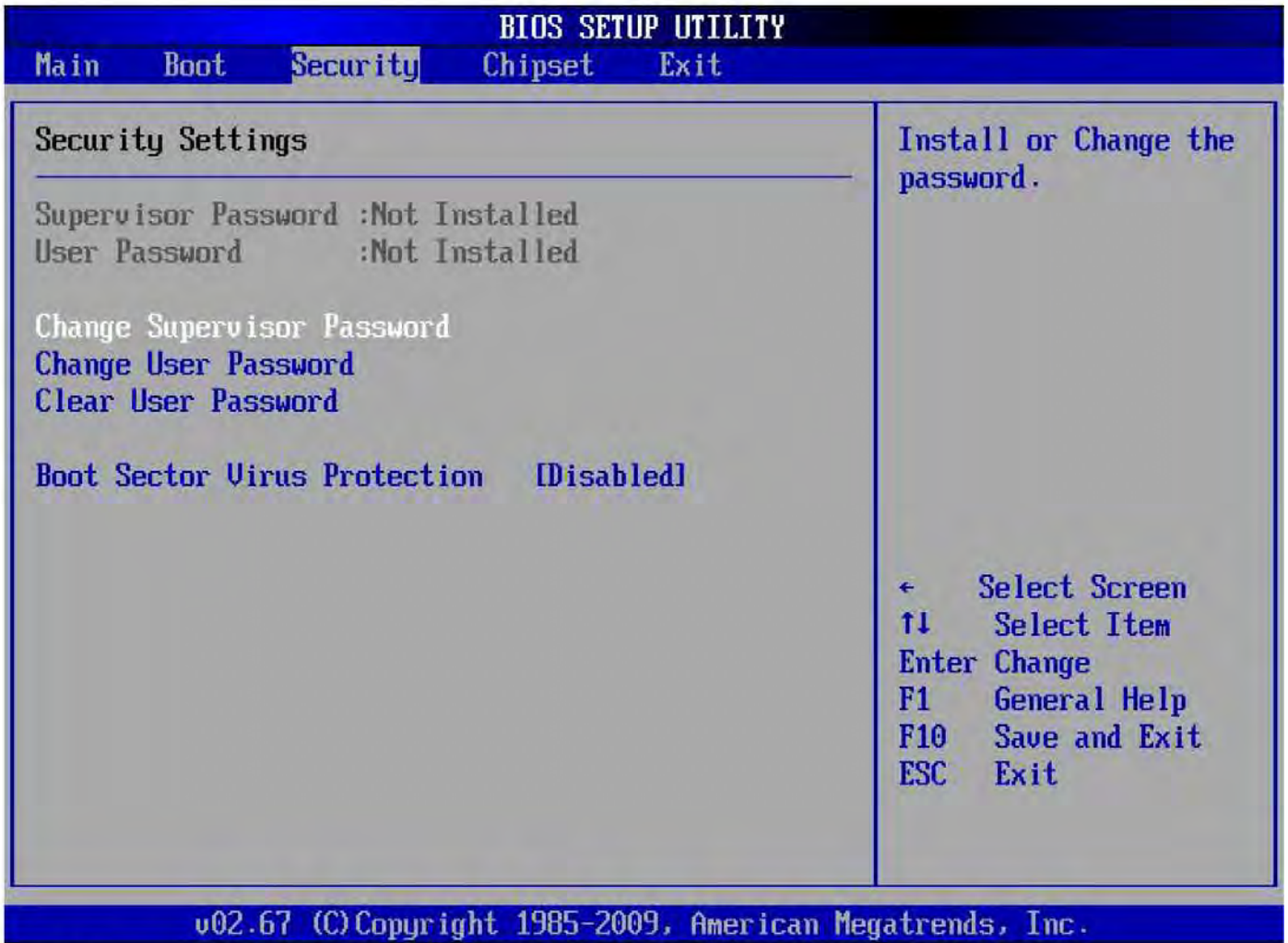
- Quick Boot
- Quiet Boot
- AddOn ROM Display Mode
- Bootup Num-Lock
- PS/2 Mouse Support
- Wait For 'F1' If Error
- Hit 'DEL' Message Display
- Interrupt 19 Capture

B、 Boot Device Priority: Enable device Settings. The sub-menu is as follows:

1st Boot Device [SATA: PM-Hitachi HT]

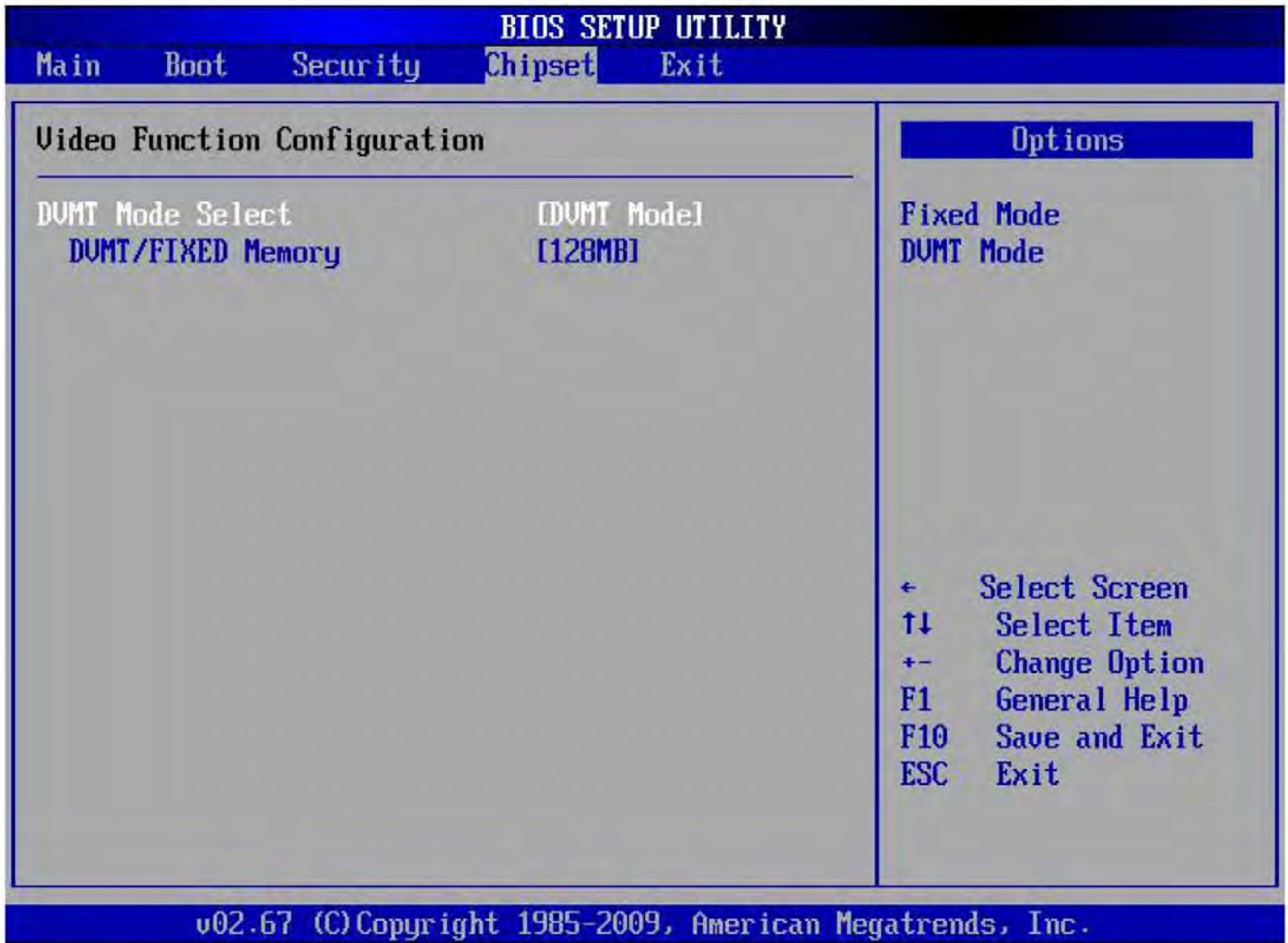
When there is no external boot device, There is only one boot item on the hard drive.

4.4 Security(security Settings)



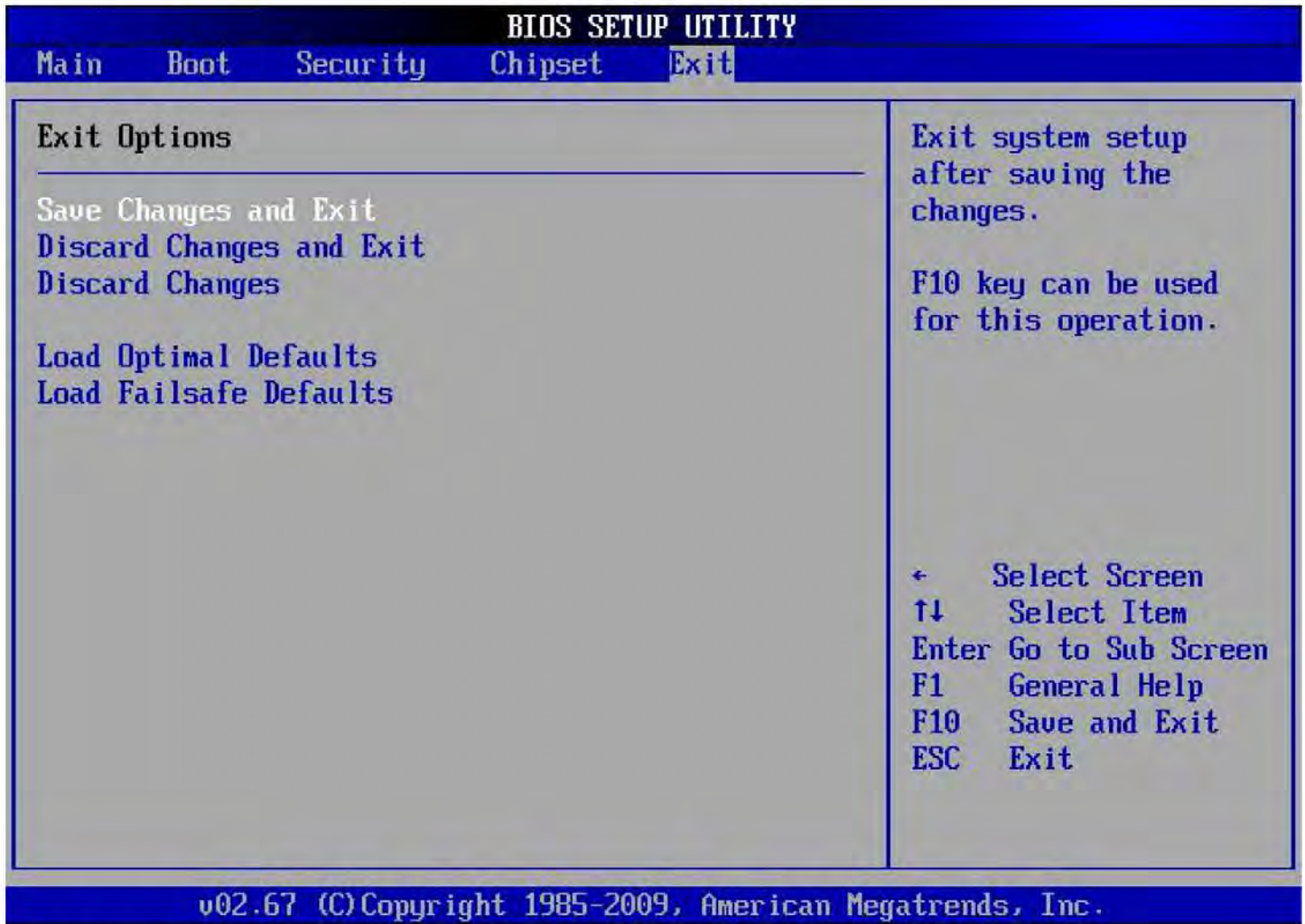
- A、 Change Supervisor Password: Change the administrator password.
- B、 Change User Password: Change the user password.
- C、 Clear User Password: Clear user password.

4.5 Chipset(chipset Settings)



- A、Select "DVMT Mode" to set whether the video memory is fixed allocation or dynamic allocation With, FIXED /DVMT(dynamic).
- B、DVMT/FIXED Memory: the size of FIXED Memory allocation can be set, with the following options:128MB,256MB,Maximum DVMT.

4.6 Exit(exit)



- A、 Save Changes and Exit: Save the Settings and exit BIOS Setup.
- B、 Discard Changes and Exit: Exit BIOS Setup without saving the Settings.
- C、 Discard Changes: Discard changes made.
- D、 Load Optimal Defaults: Load the default value of high-tech energy.
- E、 Load Failsafe Defaults: Load the failsafe default.

5 Driver installation and instructions

In this chapter, you will learn how to install the driver using the attached disc.

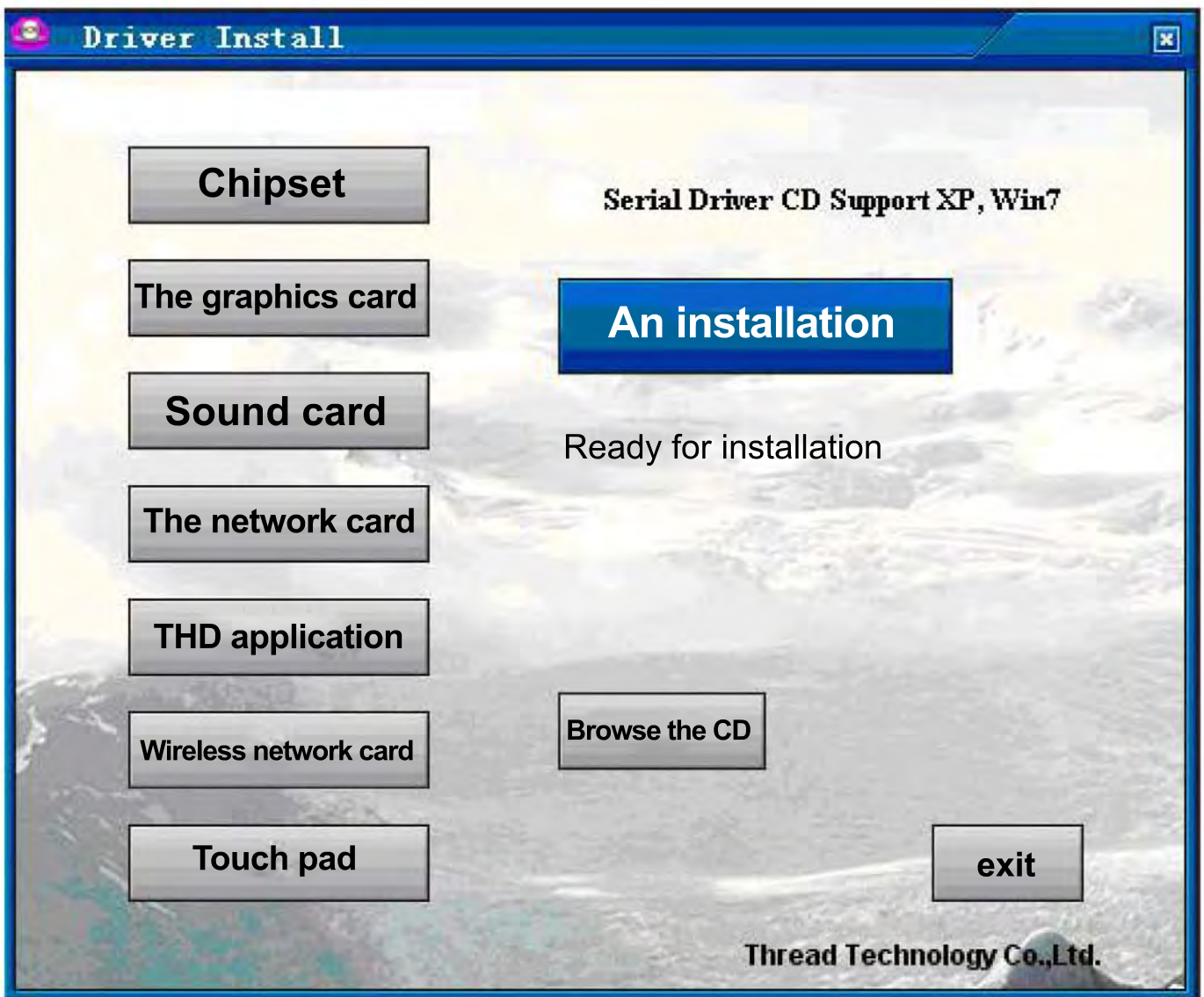
Your laptop will be shipped with a driver disc. The disc contains the drive for the device
The program.

This chapter will show you how to install these drivers.

5.1 to install the driver, please follow the following steps

This CD supports Windows XP and Win7.

Open the attached disc (as shown below), and if you need to install a single driver,
Please click the corresponding option on the left side of the installation interface to install.
If you need to install all the drivers,
Please click one key to install, automatically install the driver.



6. Failure analysis and treatment

In this chapter, you will learn how to solve general hardware and software problems. Your laptop has been fully tested before shipment and meets the system specifications. However, improper operation or careless delivery can lead to problems.

This chapter provides reference and identification information for common hardware and software problems that you may encounter.

When you encounter a problem, you can first try to follow the instructions in this chapter. If the error continues, please contact the distributor for service information.

6.1 sound problems

There is no sound

- Please double-click the speaker icon in the lower right corner of the task bar, Check to see if the volume on the speaker has been turned off.
- Please press Fn+F4 to raise the volume.
- Most of the sound problems are software related. If the sound on your laptop is normal, The possible reason is that the software is not set up correctly.

Not the tape

Please double-click the speaker icon in the lower right corner of the task bar, See if the microphone has been turned off.

1. Click options and select properties.
2. Select "record" and press the "ok" button.
3. After pressing the "ok" button, the recording volume console will pop up.

6.2 hard disk problems

The hard disk does not work properly or is not recognized

- If you have just upgraded your hard disk, make sure that the interface to your hard disk is not loose, The hard drive was inserted exactly right. You can unplug the connector, insert it again firmly, and then restart it.
- The new hard disk needs to be partitioned and reformatted. The operating system and drivers also need to be reinstalled.
- Please check the hard disk indicator. When you access files, The hard disk light should flicker intermittently.

- The new hard disk may be broken.
- If your laptop has ever suffered from static electricity or a crash, You may have damaged your hard disk.

Hard disk execution is too slow

- If your hard drive has been in use for a long time, too many and messy files can lead to a lot of disk fragmentation. Please go to the > program > attachment > system tool > disk defragmenting program to perform disk defragmenting. This assignment might take a little time.
- Your hard disk may be infected with a virus.

The file is damaged

- Please perform a surface scan of scandisk to check the disk. Double-click [my computer], right click C:, select [properties], In the tools TAB, click start check to execute the scandisk program.

6.3 monitor problems

When the system is turned on, the screen goes black

- Make sure your laptop is not in "sleep" or "wait" mode. Under these models, The display will be turned off to save energy.
- Please press the function key to increase the brightness of the screen.
- Please press the function key to make sure your laptop is not in CRT output mode only.

The screen is hard to read

- Please press the function key to increase the brightness of the screen.
- The resolution of the display should be set to 1366*768 for the best display
 1. Please go to the start > Settings > control panel and double-click the display icon.
 2. On the Settings page, set the resolution to 1366*768.

Screen flicker

- It is normal to see the screen flicker several times when you turn it on or off.

Screen bad point

Due to the limitations of the LCD manufacturing process, there are usually some image points on the LCD that cannot display certain colors normally (usually said bad point), this is a normal phenomenon, please rest assured use. Please refer to the Chinese national standard GB/t9813-2000 for details.

6.4 memory issues

As you install more memory,
T POST does not show increased memory capacity when booting itself

- Memory may not be installed correctly.
- The memory stick is broken.
- Your system may not be compatible with some memory sticks.

Your system may not be compatible with some memory sticks.

- This is usually a software or Windows related issue.
- Please close the unused application software and restart it.
- Otherwise, you will have to install more memory sticks.

Special statement

This laptop can support a variety of peripheral hardware, such as mouse, Keyboard, printer, scanner.

The company guarantees the compatibility and reliability of its products.

Please use the product in accordance with the attached instruction manual.

If a consumer purchases a third-party peripheral to connect to the laptop,

Follow the device's instructions to properly connect the peripherals to the computer and install the appropriate drivers under the operating system that supports the device.

Because the market peripheral equipment manufacturers more, in order to ensure the interests of consumers, this

The company advises consumers to buy products from well-known manufacturers with guaranteed quality.

If there is a compatibility problem between third-party peripheral devices and XXX laptop computer,

Please contact the third party manufacturer

Software given to this laptop (all randomly installed software is given to this laptop at random,

The company guarantees the functionality and compatibility of its software.

Please refer to the user manual for proper use of the software. Besides, there are all kinds of software on the market now.

Unless the software has special requirements, most legitimate software will work on the laptop.

In order to ensure the interests of consumers, users are invited to purchase legitimate software from the formal channels.

For third-party software purchased and installed by the user, please follow the instructions provided with the software.

If there is any compatibility problem between the third-party software and the laptop, please contact the third-party manufacturer

Users are advised to purchase hardware products or software from third parties.

Third party manufacturer or distributor can be found to test passBuy later to protect your rights and interests.

The company does not guarantee due to third party hardware productsOr software problems to the customer for a return or replacement.

The company can provide technical support.

FCC Caution: Any changes or modifications not expressly approved by the party responsible for compliance could void the user's authority to operate this equipment.

This device complies with Part 15 of the FCC Rules. Operation is subject to the following two conditions:

- (1) This device may not cause harmful interference, and
- (2) this device must accept any interference received, including interference that may cause undesired operation.

This device and its antenna(s) must not be co-located or operating in conjunction with any other antenna or transmitter.

1. This equipment should be installed and operated with minimum distance 0mm between the radiator and your body.
2. The device has been evaluated to meet general RF exposure requirements. The device can be used in portable exposure conditions without restriction.

NOTE:

This equipment has been tested and found to comply with the limits for a Class B digital device, pursuant to Part 15 of the FCC Rules.

These limits are designed to provide reasonable protection against harmful interference in a residential installation. This equipment generates, uses and can radiate radio frequency energy and, if not installed and used in accordance with the instructions, may cause harmful interference to radio communications.

However, there is no guarantee that interference will not occur in a particular installation.

If this equipment does cause harmful interference to radio or television reception, which can be determined by turning the equipment off and on, the user is encouraged to try to correct the interference by one or more of the following measures:

- Reorient or relocate the receiving antenna.
- Increase the separation between the equipment and receiver.
- Connect the equipment into an outlet on a circuit different from that to which the receiver is connected.
- Consult the dealer or an experienced radio/TV technician for help.