



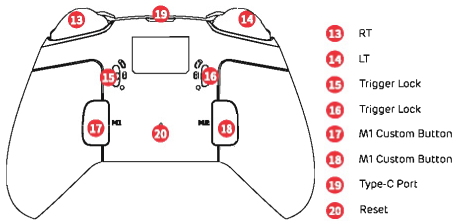
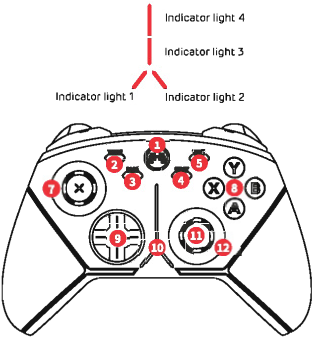
USER MANUAL

CERTIFICATE IS INSPECTED

1

I. KEYS INTRODUCTION

- 1 LOGO Button
- 2 TURBO
- 3 BACK
- 4 START
- 5 SHIFT
- 6 Left Joystick
- 7 Sensivity Knob
- 8 ABXY
- 9 D-Pad
- 10 Indicator Light
- 11 Right Joystick
- 12 Sensivity Knob

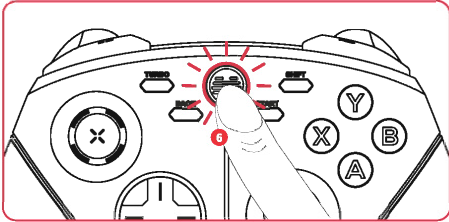


2

II. POWER ON/OFF

① [Power on]

Press the BEITONG Logo button to turn on the Controller



② [Power off]

Press and hold the Back + B button for about 3 seconds, the Controller will be turned off



③ [Forced shutdown situation]

- ✖ Under disconnected state:
Automatically shut down If the controller isn't connected successfully within 120s
- ✖ Under connected state:
Automatically shutdown if the controller isn't operated within 10 min
- ✖ Automatically shutdown if the controller is in low battery

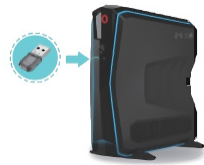
3

III. CONNECT TO PC/TV

[WIRELESS CONNECTION]

① Insert the wireless receiver into the USB interface of the device

Indicator lights flashes slowly while the wireless receiver pairing



② Press the BEITONG Logo button to turn controller on , it will automatically connect with the device

The connection is completed when the controller vibrates and the indicator light turns normally on

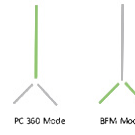


4

③ Press and hold BEITONG Logo button for 3s to switch the controller mode [PC360 mode]: The green light on the upper half is on for 3s

[BFM mode]: The green light on the lower half is on for 3s

④ Automatically paired for connection when the receiver is used again, while you press BEITONG Logo (Home Button) to start up



Indicator lights

[WIRE CONNECTION]

① Connect the controller with device directly through usb cable. If the indicator light flash slowly, the controller is in charging state

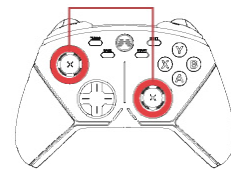
② The connection is completed when the controller vibrates and the indicator light turns normally on



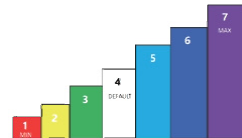
5

IV. FEATURES FOR CONTROLLER

[SENSIVITY KNOB OPERATION]



- ① Joystick sensitivity adjustable in real time:
A higher/lower gear could be adjusted when you rotate the knob three times each, while the three indicator lights are in the same color
- ② Indicator lights color & corresponding sensitivity



③ Knob Operations

- ✖ [Left knob] :Adjust the left stick. The indicator light flows to the left:indicator lights 1,3,4
- ✖ [Right knob] :Adjust the right stick. The indicator light flows to the right:indicator lights 2,3,4
- ✖ [Sensitivity enhance] :Rotate the knob clockwise. The indicator lights flows from the bottom up
- ✖ [Sensitivity weaken] :Rotate the knob counterclockwise. The indicator lights flows from the top down
- ✖ [Left/right stick reset to default] : Press and hold [SHIFT] then press down the left/right stick:reset to default when the left/right side indicator light turns white for 3s
- ✖ [Reset to default simultaneously] : Press and hold [SHIFT] for 3s, the sensitivities of left and right sticks are reset to default when the indicator light 3 & 4 are off for 3s

6

V. SOFTWARE CONFIGURATION

[CONTROLLER ASSISTANT DOWNLOAD]

- ① Download the software "ASURA 3S Assistant" from BEITONG official website: <https://www.betop-cn.com/en/#/down> , and install it on the computer
- ② In order to use the ASURA 3S Assistant normally, the controller must be connected to the computer with USB cable
Press the BEITONG logo button to turn controller on and it' ll be connected automatically



③ Run the software "ASURA 3S Assistant" to set up the Controller function

*If reminded to update the firmware, be sure to click "Confirm"



[FIRMWARE UPGRADE]

- ① Connect the controller to the computer with usb cable
- ② Open "BEITONG Gamepad Assistant" configuration software in the computer
- ③ The gamepad assistant will automatically check the gamepad firmware version and automatically upgrade it
- *If the firmware upgrade fails due to factors such as signal disconnection, disconnection or poor contact, Please unplug the USB cable and then re-plug again to resume the firmware upgrade.

8

[CUSTOMIZABLE BUTTON]

- ① Lighting adjustment
[Change configuration name]
[Change indicator light ' s flicker mode]:
✖ Normal: All lights are on ✖ Breath: All lights change in breathing state ✖ Drip: Light flows from the top down
[Change light color] : 9 colors can be selected totally
[Switch color flow direction]: according to the color table order
✖ Single color: All lights are normally on in a single color
✖ Clockwise: All lights switch in clockwise colors
✖ Counterclockwise: All lights switch in counterclockwise colors
[Brightness adjust of lights]: 5 levels are optional
[Frequency adjust of lights switching]: 5 levels are optional

② Vibration adjustment
[Intensity] : Adjust the intensity of vibration feedback of the gamepad③ Key functions setting
✖ LB, RB, M1 and M2 keys can be customized to set macro and mapping for other keys
✖ Other keys on the gamepad can only be customized to set mapping

[Key value mapping]

For example, Key A is mapped to Key B to trigger the action of B when A is pressed.
Click the input box after the arrow of Key [A] to delete the key value;
Press Key B on the gamepad to map Key [A] to Key [B]

[Macro Programmable]

LB, RB, M1, M2 keys can be set for macro programming
One button can be set to have a maximum of 32 actions
You can record the [Action], [Duration] and [Interval] between each action in combo operations in real-time, and fine-tune them in milliseconds.

[Joystick Sensitivity Setting]

The sensitivity curve can be viewed in real time, which can be achieved by rotating the speed control knob of stick

9

VI. OTHER FUNCTIONS AND BATTERY

[TURBO FUNCTION]

[TURBO + Action Key]



- ① Enable:
Press and hold [Action Key] and then press [TURBO Key].
When the gamepad vibrates once, it indicates that running fire is enabled
- ② Disable:
Press and hold [Action Key] that enabled the running fire, and then press [BURBO Key]

[JOYSTICK D-PAD SWITCH]

[SHIFT Key] To Switch
Press gently [SHIFT Key] to enable/disable the function of switching between the joystick and direction keys

10

[CHARGING & BATTERY LIFE]

- ① Battery Life
Built-in 950mAh lithium battery, with TYPE-C USB data cable attached to the package
Battery life is up to 80 h when the controller is fully charged and about 40h when the it is in normal use
- ② Charging Mode
[Charging by connecting to the computer / TV with a cable]
[Charging with a phone charger]
When you play a game with a cable connected to the computer/TV, the gamepad will be charged synchronously
- ③ Charging Indicator Light Prompt
The indicator light will be in breathing state when charging, and in normally on state when fully charged
✖ Power on state: None
✖ Power off state: Color flows clockwise, frequency is level 3
✖ 0-25% Power: Indicator light 1,2,3,4 flow ✖ 25%-50% Power: Indicator light 1 normally on, 2,3,4 flow
✖ 50%-75% Power: Indicator light 1,2 normally on, 3,4 flow
✖ 75%-99% Power: Indicator light 1,2,3 normally on, 4 breathing
✖ Full charge: Indicator light 1,2,3,4 normally on in white
When the battery power is lower than 20%, the indicator lights 1 and 2 will flicker in red quickly

11

ABOUT BEITONG

Leading brand of smart gaming peripherals in China
Been focusing on game controllers, software development more than 25 years
Sticking on quality, function and innovation
Customizing professional control solutions for different types of games
Creating the stronger experience of game control for gamers

CUSTOMER SERVICE

Official website: www.betop-cn.com
Service Email: beitong-oversea@betop-cn.com

12

128g双铜印不过膜，风琴折，成品尺寸7x10cm

This device complies with part 15 of the FCC Rules. Operation is subject to the following two conditions: (1) This device may not cause harmful interference, and (2) this device must accept any interference received, including interference that may cause undesired operation.

Any Changes or modifications not expressly approved by the party responsible for compliance could void the user's authority to operate the equipment.

Note: This equipment has been tested and found to comply with the limits for a Class B digital device, pursuant to part 15 of the FCC Rules. These limits are designed to provide reasonable protection against harmful interference in a residential installation. This equipment generates uses and can radiate radio frequency energy and, if not installed and used in accordance with the instructions, may cause harmful interference to radio communications. However, there is no guarantee that interference will not occur in a particular installation. If this equipment does cause harmful interference to radio or television reception, which can be determined by turning the equipment off and on, the user is encouraged to try to correct the interference by one or more of the following measures:

- Reorient or relocate the receiving antenna.
- Increase the separation between the equipment and receiver.
- Connect the equipment into an outlet on a circuit different from that to which the receiver is connected.
- Consult the dealer or an experienced radio/TV technician for help.