

Evolve 3 Holdings Pty Ltd
Address: PO BOX 6222, NARRAWEENA NSW, Australia, 2099
Tel.: +61400665466
Email: ray@evolvethree.com.au

Date: 2020-07-30


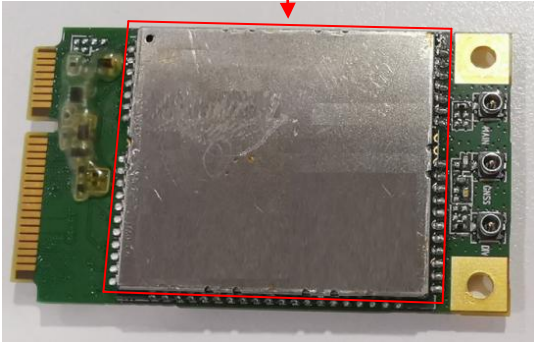
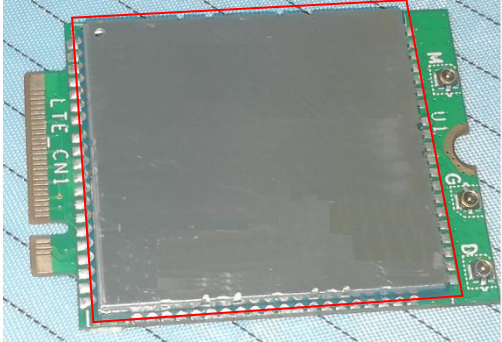
FEDERAL COMMUNICATIONS COMMISSIONS
Authorization and Evaluation Division
7435 Oakland Mills Road
Columbia, MD 21046

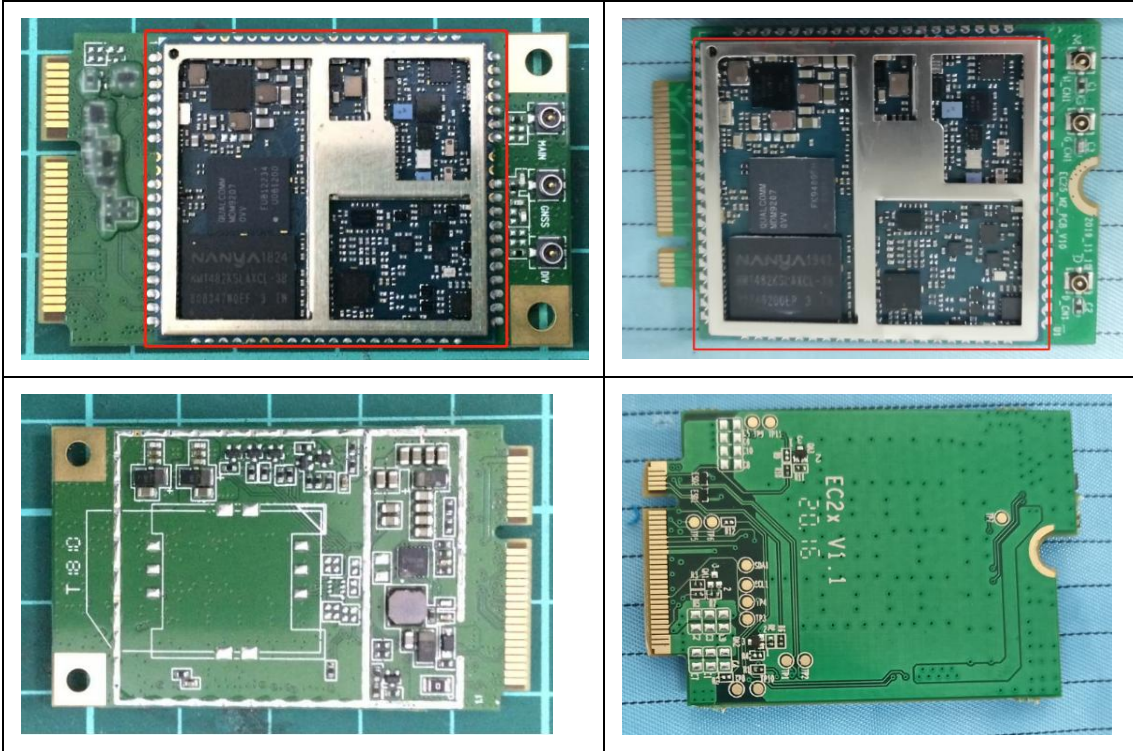
Attestation letter

Dear Sir or Madam,

The LTE modular installed in our product Maestro EBook; Model number: Maestro-EBook11, FCC ID: 2AWLG-MEB116, which the RF section is same as the certified LTE modular (FCC ID: 2AWLG201808EC25AF). The details are as follows:

The module differences are as follows:

FCC ID: 2AWLG201808EC25AF	Maestro-EBook11 LTE modular (Note: This module does not have a label)
<ol style="list-style-type: none">1. The RF module is the same. The difference lies in the PCB substrate. The EC25-AF module PCB substrate contains the interface circuit and the reserved codec circuit.2. The antenna matching circuit is different.	
 	



The LTE modular which supports WCDMA/LTE function. For use in the US market, this modular only support WCDMA Band 2/5, LTE band 2/4/5/12/13/66/71, the other WCDMA/LTE bands was disabled by the manufacturer in the software. The end user has no capability to activate it.

Sincerely,

Signature

A handwritten signature in black ink, appearing to read 'Ray Paola', is written below the 'Signature' label.

RAY PAOLA
CEO