

## RF Test Data for RLAN(5.8G) (Conducted Measurement)

Product Name: SKYBOXE 4G

Trade Mark: SKYBOXE

Test Model: SB4GTVLM940

FCC ID: 2AWJS-SB4GTVLM940

### Environmental Conditions

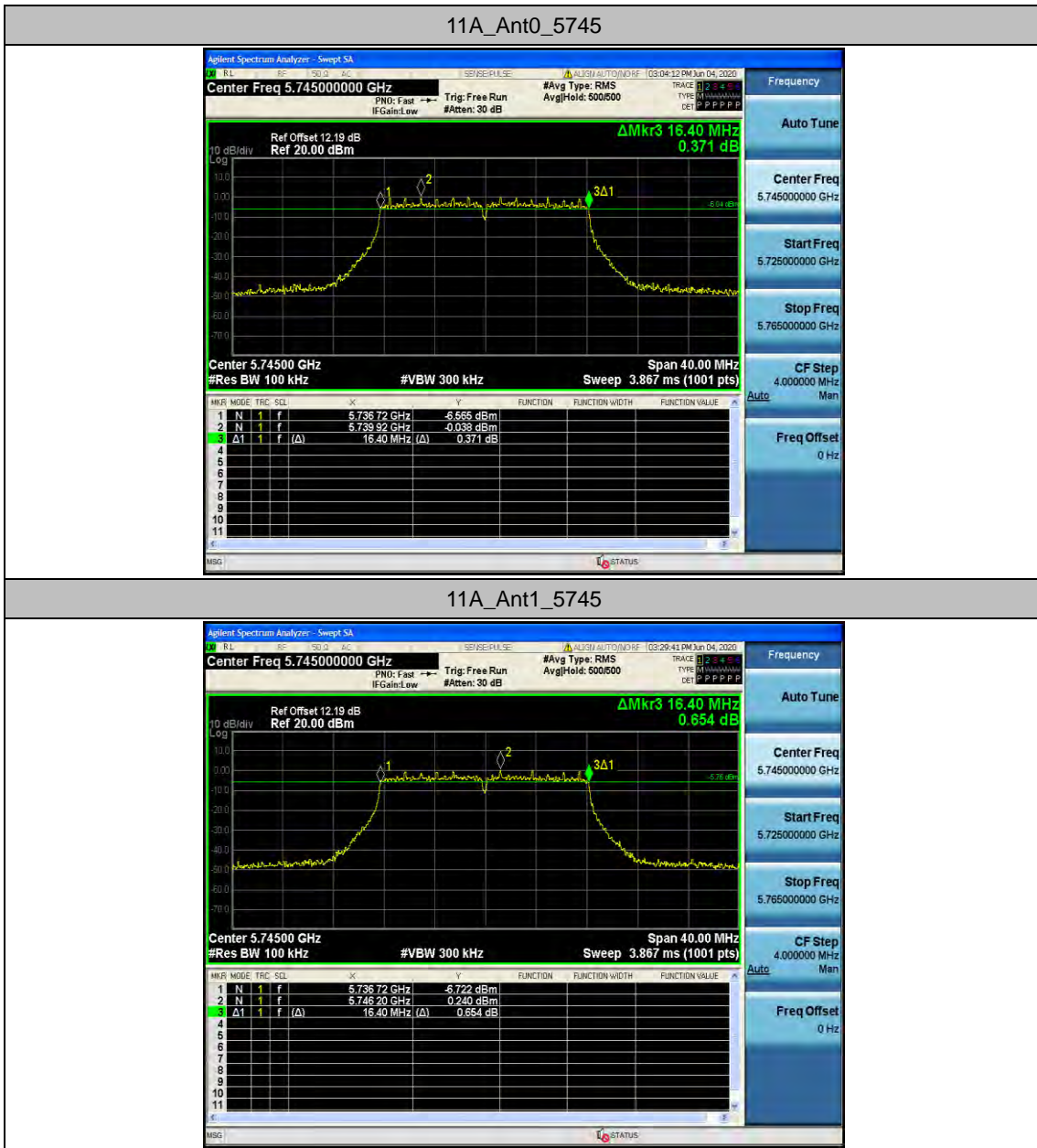
Temperature:	25.5°C
Relative Humidity:	55.2%
ATM Pressure:	100.0 kPa
Test Engineer:	Anna Hu
Supervised by:	Hugo Chen
NOTE	N/A

### Appendix A: Min emission bandwidth

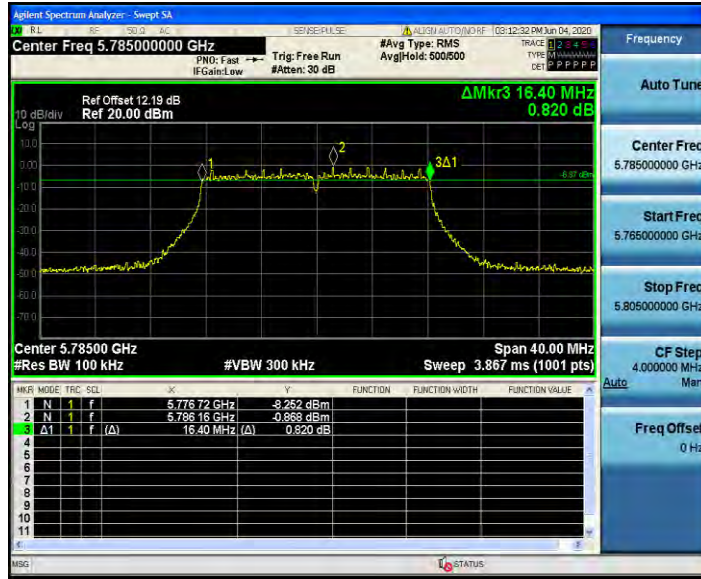
#### Test Result

TestMode	Antenna	Channel	6db EBW [MHz]	FL[MHz]	FH[MHz]	Limit[MHz]	Verdict
11A	Ant0	5745	16.400	5736.720	5753.120	0.5	PASS
	Ant1	5745	16.400	5736.720	5753.120	0.5	PASS
	Ant0	5785	16.400	5776.720	5793.120	0.5	PASS
	Ant1	5785	16.400	5776.720	5793.120	0.5	PASS
	Ant0	5825	16.360	5816.760	5833.120	0.5	PASS
	Ant1	5825	16.360	5816.760	5833.120	0.5	PASS
11N20MIMO	Ant0	5745	17.640	5736.080	5753.720	0.5	PASS
	Ant1	5745	17.600	5736.120	5753.720	0.5	PASS
	Ant0	5785	17.680	5776.080	5793.760	0.5	PASS
	Ant1	5785	17.640	5776.120	5793.760	0.5	PASS
	Ant0	5825	17.680	5816.080	5833.760	0.5	PASS
	Ant1	5825	17.240	5816.520	5833.760	0.5	PASS
11N40MIMO	Ant0	5755	35.360	5737.240	5772.600	0.5	PASS
	Ant1	5755	35.360	5737.240	5772.600	0.5	PASS
	Ant0	5795	35.280	5777.320	5812.600	0.5	PASS
	Ant1	5795	35.280	5777.240	5812.520	0.5	PASS
11AC20MIMO	Ant0	5745	17.680	5736.080	5753.760	0.5	PASS
	Ant1	5745	17.640	5736.120	5753.760	0.5	PASS
	Ant0	5785	17.640	5776.120	5793.760	0.5	PASS
	Ant1	5785	17.640	5776.120	5793.760	0.5	PASS
	Ant0	5825	17.640	5816.120	5833.760	0.5	PASS
	Ant1	5825	16.760	5817.000	5833.760	0.5	PASS
11AC40MIMO	Ant0	5755	35.360	5737.240	5772.600	0.5	PASS
	Ant1	5755	35.360	5737.240	5772.600	0.5	PASS
	Ant0	5795	35.200	5777.320	5812.520	0.5	PASS
	Ant1	5795	35.280	5777.320	5812.600	0.5	PASS
11AC80MIMO	Ant0	5775	75.360	5737.240	5812.600	0.5	PASS
	Ant1	5775	75.360	5737.240	5812.600	0.5	PASS

### Test Graphs



11A\_Ant0\_5785



11A\_Ant1\_5785



11A\_Ant0\_5825



11A\_Ant1\_5825



11N20MIMO\_Ant0\_5745



11N20MIMO\_Ant1\_5745





11N20MIMO\_Ant0\_5785



11N20MIMO\_Ant1\_5785



11N20MIMO\_Ant0\_5825



11N20MIMO\_Ant1\_5825



11N40MIMO\_Ant0\_5755



11N40MIMO\_Ant1\_5755





11N40MIMO\_Ant0\_5795



11N40MIMO\_Ant1\_5795



11AC20MIMO\_Ant0\_5745



11AC20MIMO\_Ant1\_5745



11AC20MIMO\_Ant0\_5785



11AC20MIMO\_Ant1\_5785



11AC20MIMO\_Ant0\_5825



11AC20MIMO\_Ant1\_5825





11AC40MIMO\_Ant0\_5755



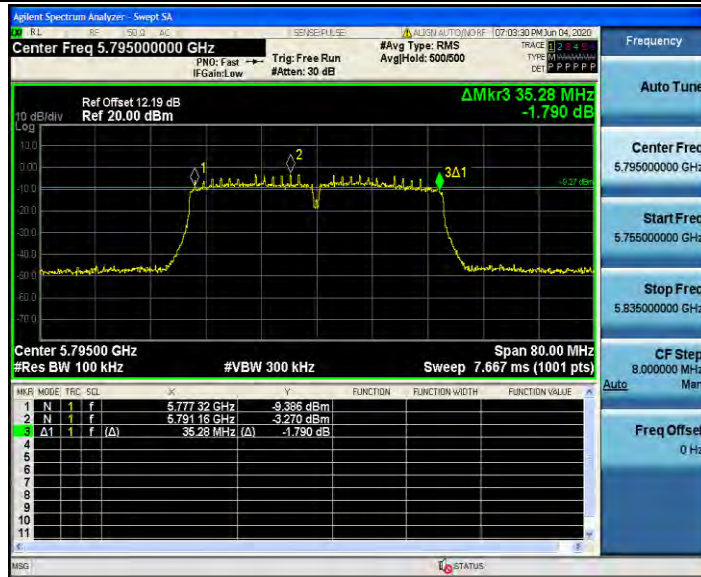
11AC40MIMO\_Ant1\_5755



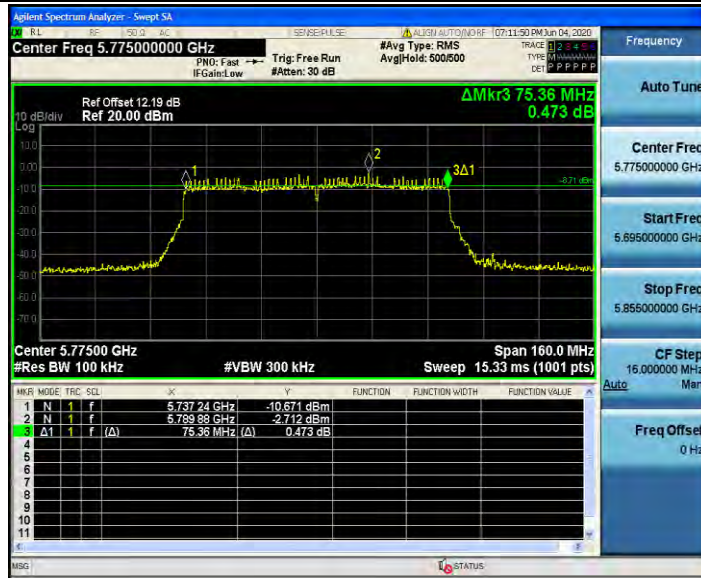
11AC40MIMO\_Ant0\_5795



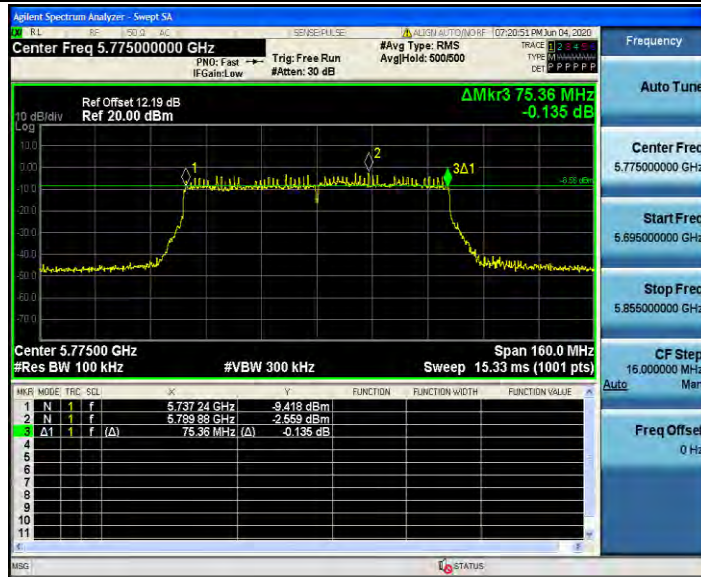
11AC40MIMO\_Ant1\_5795



11AC80MIMO\_Ant0\_5775



11AC80MIMO\_Ant1\_5775



## Appendix B: Maximum conducted output power

### Test Result

TestMode	Antenna	Channel	Result[dBm]	Limit[dBm]	Verdict
11A	Ant0	5745	11.25	30.00	PASS
	Ant1	5745	11.37	30.00	PASS
	Ant0	5785	10.22	30.00	PASS
	Ant1	5785	10.96	30.00	PASS
	Ant0	5825	11.22	30.00	PASS
	Ant1	5825	12.02	30.00	PASS
11N20MIMO	Ant0	5745	10.87	30.00	PASS
	Ant1	5745	11.13	30.00	PASS
	total	5745	14.0	27.94	PASS
	Ant0	5785	10.02	30.00	PASS
	Ant1	5785	10.75	30.00	PASS
	total	5785	13.4	27.94	PASS
	Ant0	5825	11.00	30.00	PASS
	Ant1	5825	11.83	30.00	PASS
total	5825	14.4	27.94	PASS	
11N40MIMO	Ant0	5755	10.27	30.00	PASS
	Ant1	5755	10.70	30.00	PASS
	total	5755	13.5	27.94	PASS
	Ant0	5795	9.56	30.00	PASS
	Ant1	5795	10.31	30.00	PASS
	total	5795	13.0	27.94	PASS
11AC20MIMO	Ant0	5745	10.90	30.00	PASS
	Ant1	5745	11.17	30.00	PASS
	total	5745	14.0	27.94	PASS
	Ant0	5785	10.12	30.00	PASS
	Ant1	5785	10.79	30.00	PASS
	total	5785	13.5	27.94	PASS
	Ant0	5825	11.11	30.00	PASS
	Ant1	5825	11.92	30.00	PASS
total	5825	14.5	27.94	PASS	
11AC40MIMO	Ant0	5755	10.50	30.00	PASS
	Ant1	5755	10.83	30.00	PASS
	total	5755	13.7	27.94	PASS
	Ant0	5795	9.70	30.00	PASS
	Ant1	5795	10.40	30.00	PASS
	total	5795	13.1	27.94	PASS
11AC80MIMO	Ant0	5775	12.31	30.00	PASS
	Ant1	5775	12.86	30.00	PASS
	total	5775	15.6	27.94	PASS

Note: The Duty Cycle Factor is compensated in the graph.



## Appendix C: Maximum power spectral density

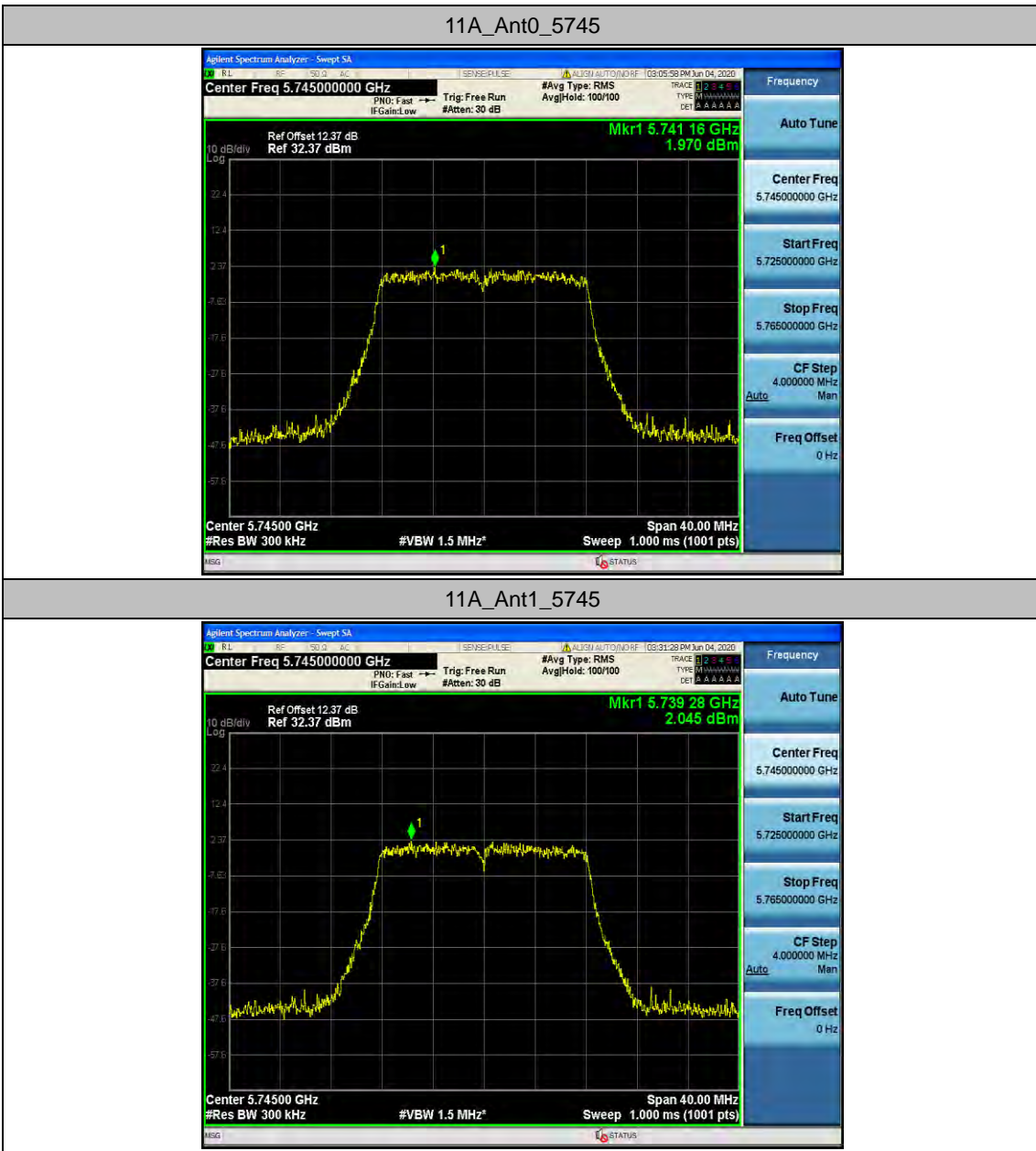
### Test Result

TestMode	Antenna	Channel	Result [dBm/M	Conveter factor(dB)	Result 500KHz	Limit[dBm/MHz ]	Verdict
11A	Ant0	5745	1.97	3.01	-1.04	30.00	PASS
	Ant1	5745	2.05	3.01	-0.96	30.00	PASS
	Ant0	5785	0.52	3.01	-2.49	30.00	PASS
	Ant1	5785	1.45	3.01	-1.56	30.00	PASS
	Ant0	5825	1.87	3.01	-1.14	30.00	PASS
	Ant1	5825	2.86	3.01	-0.15	30.00	PASS
11N20MIMO	Ant0	5745	1.35	3.01	-1.66	30.00	PASS
	Ant1	5745	1.1	3.01	-1.91	30.00	PASS
	total	5745	4.24	3.01	1.23	27.94	PASS
	Ant0	5785	0.45	3.01	-2.56	30.00	PASS
	Ant1	5785	1.48	3.01	-1.53	30.00	PASS
	total	5785	4.01	3.01	1.00	27.94	PASS
	Ant0	5825	1.23	3.01	-1.78	30.00	PASS
	Ant1	5825	2.16	3.01	-0.85	30.00	PASS
11N40MIMO	total	5825	4.73	3.01	1.72	27.94	PASS
	Ant0	5755	-2.4	3.01	-5.41	30.00	PASS
	Ant1	5755	-2.11	3.01	-5.12	30.00	PASS
	total	5755	0.76	3.01	-2.25	27.94	PASS
	Ant0	5795	-3.17	3.01	-6.18	30.00	PASS
	Ant1	5795	-2.4	3.01	-5.41	30.00	PASS
11AC20MIMO	total	5795	0.24	3.01	-2.77	27.94	PASS
	Ant0	5745	1.6	3.01	-1.41	30.00	PASS
	Ant1	5745	1.6	3.01	-1.41	30.00	PASS
	total	5745	4.61	3.01	1.60	27.94	PASS
	Ant0	5785	0.32	3.01	-2.69	30.00	PASS
	Ant1	5785	1.52	3.01	-1.49	30.00	PASS
	total	5785	3.97	3.01	0.96	27.94	PASS
	Ant0	5825	1.2	3.01	-1.81	30.00	PASS
11AC40MIMO	Ant1	5825	2.6	3.01	-0.41	30.00	PASS
	total	5825	4.97	3.01	1.96	27.94	PASS
	Ant0	5755	-1.86	3.01	-4.87	30.00	PASS
	Ant1	5755	-2.48	3.01	-5.49	30.00	PASS
	total	5755	0.85	3.01	-2.16	27.94	PASS
	Ant0	5795	-3.11	3.01	-6.12	30.00	PASS
11AC80MIMO	Ant1	5795	-2.29	3.01	-5.30	30.00	PASS
	total	5795	0.33	3.01	-2.68	27.94	PASS
	total	5775	0.05	3.01	-2.96	27.94	PASS

Note: 1.The Result and Limit Unit is dBm/500 kHz in the band 5.725–5.85 GHz.

2.The Duty Cycle Factor and RBW Factor is compensated in the graph.

### Test Graphs



11A\_Ant0\_5785



11A\_Ant1\_5785



11A\_Ant0\_5825



11A\_Ant1\_5825





11N20MIMO\_Ant0\_5745



11N20MIMO\_Ant1\_5745



11N20MIMO\_Ant0\_5785



11N20MIMO\_Ant1\_5785



11N20MIMO\_Ant0\_5825



11N20MIMO\_Ant1\_5825



11N40MIMO\_Ant0\_5755



11N40MIMO\_Ant1\_5755



11N40MIMO\_Ant0\_5795



11N40MIMO\_Ant1\_5795





11AC20MIMO\_Ant0\_5745



11AC20MIMO\_Ant1\_5745



11AC20MIMO\_Ant0\_5785



11AC20MIMO\_Ant1\_5785



11AC20MIMO\_Ant0\_5825



11AC20MIMO\_Ant1\_5825



11AC40MIMO\_Ant0\_5755



11AC40MIMO\_Ant1\_5755



11AC40MIMO\_Ant0\_5795



11AC40MIMO\_Ant1\_5795





11AC80MIMO\_Ant0\_5775



11AC80MIMO\_Ant1\_5775



## Appendix D: Band edge measurements

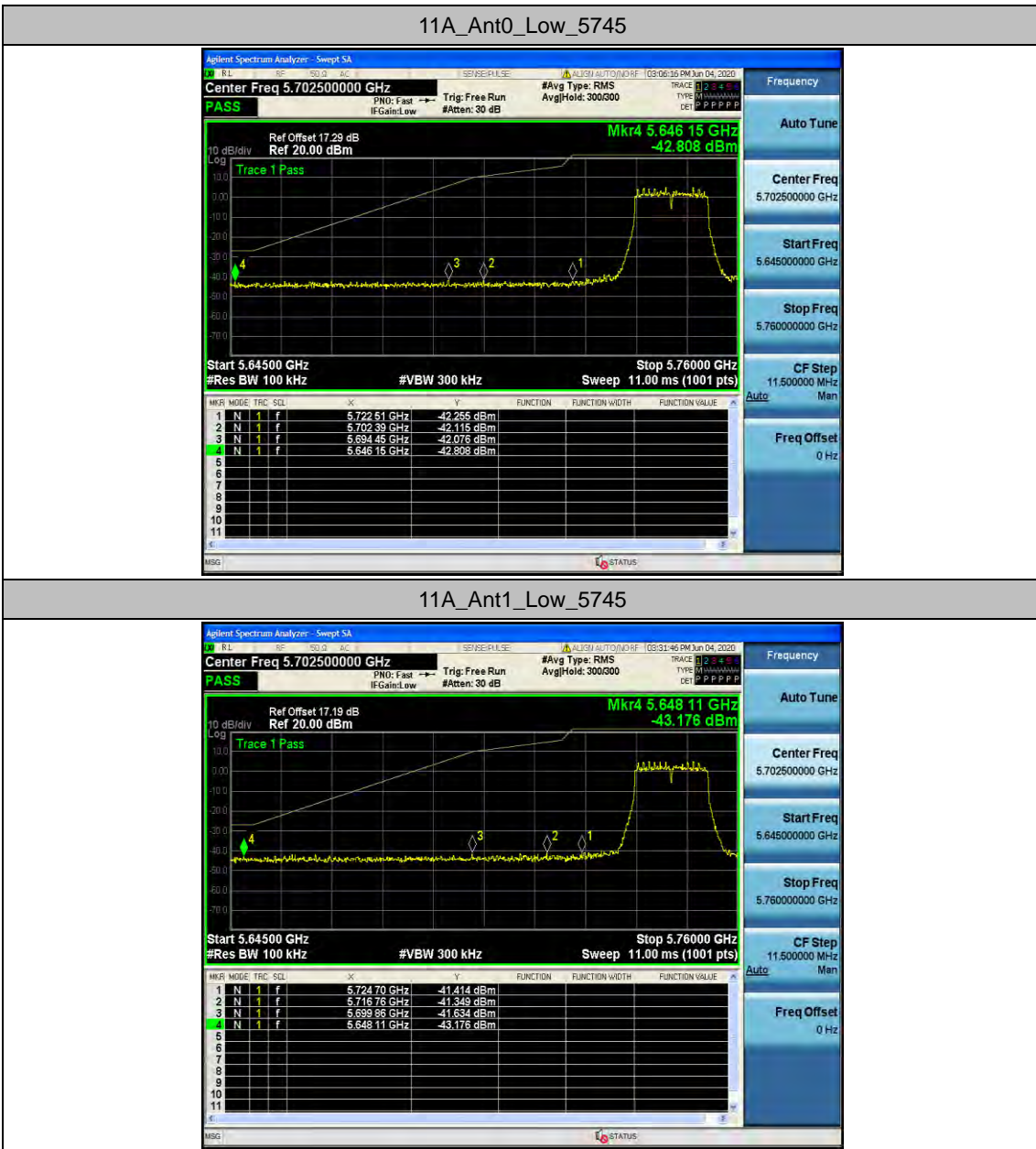
### Test Result

TestMode	Antenna	ChName	Channel	FreqRange [MHz]	Result [dBm]	Limit [dBm]	Verdict
11A	Ant0	Low	5745	5650~5700	-42.08	5.89	PASS
				5700~5720	-42.12	10.67	PASS
				5720~5725	-42.26	21.32	PASS
				5760~5650	-42.81	-27	PASS
	Ant1	Low	5745	5650~5700	-41.63	9.89	PASS
				5700~5720	-41.35	14.69	PASS
				5720~5725	-41.41	26.30	PASS
				5760~5650	-43.18	-27	PASS
	Ant0	High	5825	5850~5855	-40.09	22.57	PASS
				5855~5875	-41.37	12.67	PASS
				5875~5925	-41.47	-25.96	PASS
				5925~5935	-40.87	-27	PASS
	Ant1	High	5825	5850~5855	-42.1	25.95	PASS
				5855~5875	-40.97	12.59	PASS
				5875~5925	-41.23	-9.17	PASS
				5925~5935	-41.26	-27	PASS
11N20MI MO	Ant0	Low	5745	5650~5700	-41.83	-14.36	PASS
				5700~5720	-42.23	15.30	PASS
				5720~5725	-41.18	26.30	PASS
				5760~5650	-42.61	-27	PASS
	Ant1	Low	5745	5650~5700	-41.91	-5.94	PASS
				5700~5720	-41.85	14.47	PASS
				5720~5725	-42.53	26.04	PASS
				5760~5650	-41.96	-27	PASS
	Ant0	High	5825	5850~5855	-41.73	16.72	PASS
				5855~5875	-41.07	12.37	PASS
				5875~5925	-40.78	-2.78	PASS
				5925~5935	-41.86	-27	PASS
	Ant1	High	5825	5850~5855	-40.79	21.03	PASS
				5855~5875	-41.74	13.35	PASS
				5875~5925	-40.3	-17.47	PASS
				5925~5935	-42.05	-27	PASS
11N40MI MO	Ant0	Low	5755	5650~5700	-41.56	-11.62	PASS
				5700~5720	-41.1	15.35	PASS
				5720~5725	-41.17	17.89	PASS
				5780~5650	-42.38	-27	PASS

TestMode	Antenna	ChName	Channel	FreqRange [MHz]	Result [dBm]	Limit [dBm]	Verdict
	Ant1	Low	5755	5650~5700	-41.29	-0.43	PASS
				5700~5720	-41.17	15.47	PASS
				5720~5725	-41.14	26.20	PASS
				5780~5650	-42.25	-27	PASS
	Ant0	High	5795	5850~5855	-41.89	23.56	PASS
				5855~5875	-40.65	10.64	PASS
				5875~5925	-40.75	4.34	PASS
				5925~5935	-41.21	-27	PASS
	Ant1	High	5795	5850~5855	-41.49	25.44	PASS
				5855~5875	-41.16	11.89	PASS
				5875~5925	-40.76	2.38	PASS
				5925~5935	-40.94	-27	PASS
11AC20M IMO	Ant0	Low	5745	5650~5700	-41.44	-2.11	PASS
				5700~5720	-41.34	15.59	PASS
				5720~5725	-41.32	15.82	PASS
				5760~5650	-42.16	-27	PASS
	Ant1	Low	5745	5650~5700	-41.76	4.36	PASS
				5700~5720	-42.38	13.95	PASS
				5720~5725	-42.35	19.23	PASS
				5760~5650	-43.29	-27	PASS
	Ant0	High	5825	5850~5855	-42.27	19.80	PASS
				5855~5875	-41.06	13.50	PASS
				5875~5925	-41.03	-20.66	PASS
				5925~5935	-41.73	-27	PASS
	Ant1	High	5825	5850~5855	-41.75	21.95	PASS
				5855~5875	-41.17	10.25	PASS
				5875~5925	-40.35	-25.66	PASS
				5925~5935	-41.97	-27	PASS
11AC40M IMO	Ant0	Low	5755	5650~5700	-41.92	-20.11	PASS
				5700~5720	-40.97	14.18	PASS
				5720~5725	-40.42	26.82	PASS
				5780~5650	-42.96	-27	PASS
	Ant1	Low	5755	5650~5700	-41.44	2.67	PASS
				5700~5720	-41.12	11.16	PASS
				5720~5725	-41.38	16.35	PASS
				5780~5650	-42.72	-27	PASS
	Ant0	High	5795	5850~5855	-41.77	16.79	PASS
				5855~5875	-41.29	11.98	PASS
				5875~5925	-40.83	1.16	PASS
				5925~5935	-41.25	-27	PASS
Ant1	High	5795	5850~5855	-41.8	15.66	PASS	

TestMode	Antenna	ChName	Channel	FreqRange [MHz]	Result [dBm]	Limit [dBm]	Verdict		
11AC80M IMO				5855~5875	-40.95	11.33	PASS		
				5875~5925	-40.66	-23.26	PASS		
				5925~5935	-41.46	-27	PASS		
	Ant0	Low	5775	5650~5700	-40.83	9.33	PASS		
				5700~5720	-39.53	15.52	PASS		
				5720~5725	-39.86	24.83	PASS		
				5800~5650	-42.91	-27	PASS		
				High	5775	5850~5855	-39.97	18.75	PASS
						5855~5875	-39.49	10.59	PASS
		5875~5925	-40.95			9.32	PASS		
		5925~5935	-41.92			-27	PASS		
		Ant1	Low	5775	5650~5700	-40.07	9.67	PASS	
					5700~5720	-39.13	13.65	PASS	
					5720~5725	-37.6	20.59	PASS	
					5800~5650	-43.21	-27	PASS	
	High		5775	5850~5855	-40.69	22.12	PASS		
				5855~5875	-39.87	14.89	PASS		
				5875~5925	-40.86	-25.86	PASS		
					5925~5935	-41.45	-27	PASS	

Test Graphs





11A\_Ant0\_High\_5825



11A\_Ant1\_High\_5825



11N20MIMO\_Ant0\_Low\_5745



11N20MIMO\_Ant1\_Low\_5745



11N20MIMO\_Ant0\_High\_5825



11N20MIMO\_Ant1\_High\_5825



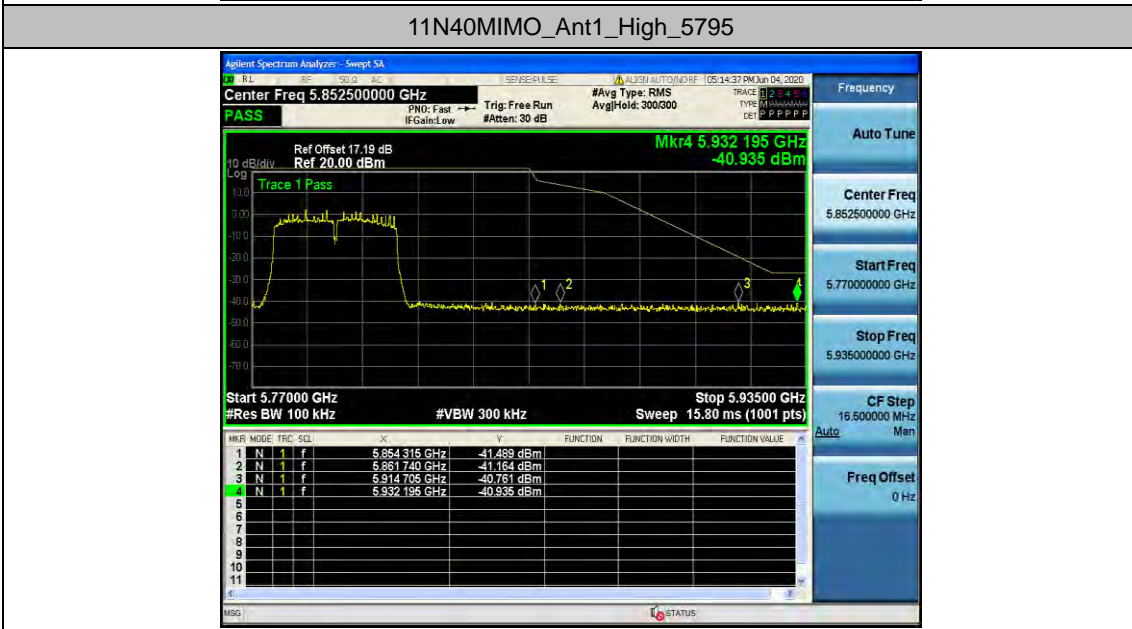
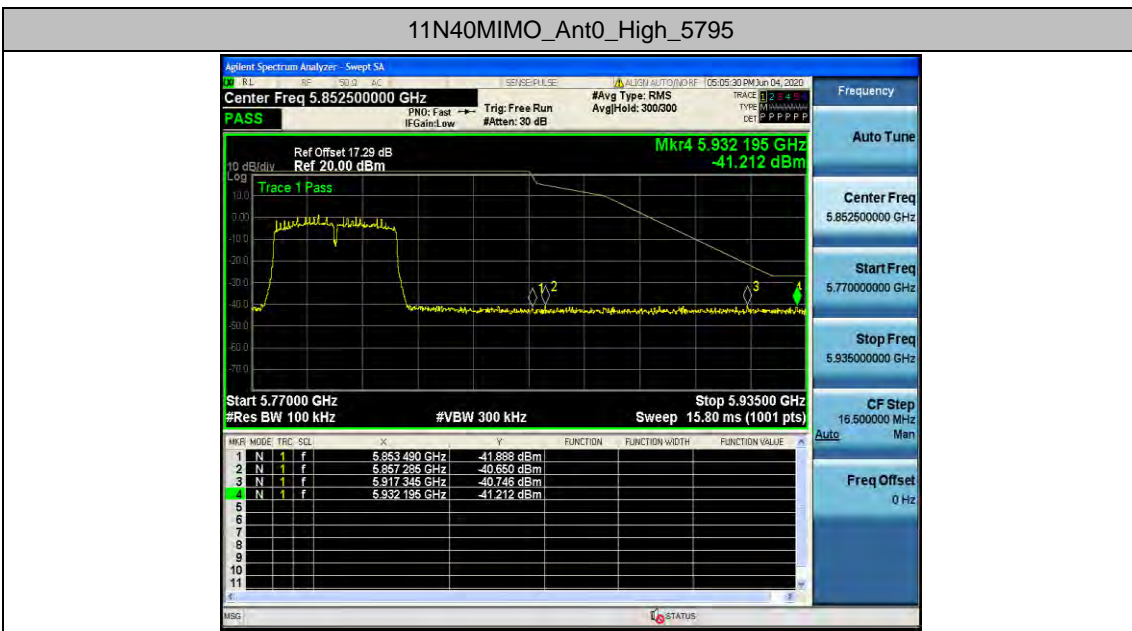
11N40MIMO\_Ant0\_Low\_5755



11N40MIMO\_Ant1\_Low\_5755









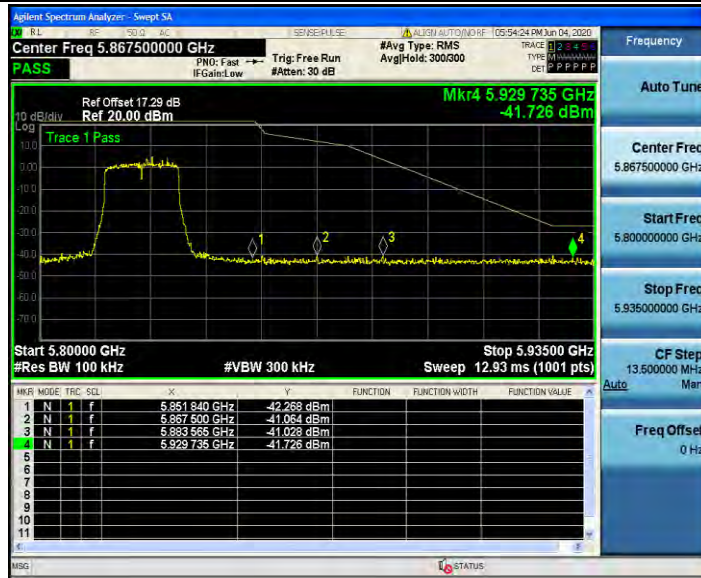
11AC20MIMO\_Ant0\_Low\_5745



11AC20MIMO\_Ant1\_Low\_5745



11AC20MIMO\_Ant0\_High\_5825



11AC20MIMO\_Ant1\_High\_5825



11AC40MIMO\_Ant0\_Low\_5755



11AC40MIMO\_Ant1\_Low\_5755



11AC40MIMO\_Ant0\_High\_5795



11AC40MIMO\_Ant1\_High\_5795





11AC80MIMO\_Ant0\_Low\_5775



11AC80MIMO\_Ant0\_High\_5775





11AC80MIMO\_Ant1\_Low\_5775



11AC80MIMO\_Ant1\_High\_5775



## Appendix E: Frequency Stability

### Test Result

Voltage								
TestMode	Antenna	Channel	Voltage [Vdc]	Temperature (°C)	Deviation (Hz)	Deviation (ppm)	Limit (ppm)	Verdict
11A	Ant0	5745	NV	NT	-87000	-15.143603	20	PASS
			LV	NT	-87000	-15.143603	20	PASS
			HV	NT	-87000	-15.143603	20	PASS
	Ant1	5745	NV	NT	-86000	-14.969539	20	PASS
			LV	NT	-87000	-15.143603	20	PASS
			HV	NT	-87000	-15.143603	20	PASS
	Ant0	5785	NV	NT	-87000	-15.038894	20	PASS
			LV	NT	-88000	-15.211755	20	PASS
			HV	NT	-88000	-15.211755	20	PASS
	Ant1	5785	NV	NT	-87000	-15.038894	20	PASS
			LV	NT	-87000	-15.038894	20	PASS
			HV	NT	-88000	-15.211755	20	PASS
	Ant0	5825	NV	NT	-88000	-15.107296	20	PASS
			LV	NT	-88000	-15.107296	20	PASS
			HV	NT	-89000	-15.27897	20	PASS
	Ant1	5825	NV	NT	-88000	-15.107296	20	PASS
			LV	NT	-88000	-15.107296	20	PASS
			HV	NT	-88000	-15.107296	20	PASS
11N20MI MO	Ant0	5745	NV	NT	-89000	-15.491732	20	PASS
			LV	NT	-89000	-15.491732	20	PASS
			HV	NT	-89000	-15.491732	20	PASS
	Ant1	5745	NV	NT	-89000	-15.491732	20	PASS
			LV	NT	-89000	-15.491732	20	PASS
			HV	NT	-89000	-15.491732	20	PASS
	Ant0	5785	NV	NT	-89000	-15.384615	20	PASS
			LV	NT	-90000	-15.557476	20	PASS
			HV	NT	-90000	-15.557476	20	PASS
	Ant1	5785	NV	NT	-90000	-15.557476	20	PASS
			LV	NT	-90000	-15.557476	20	PASS
			HV	NT	-90000	-15.557476	20	PASS
	Ant0	5825	NV	NT	-90000	-15.450644	20	PASS
			LV	NT	-90000	-15.450644	20	PASS
			HV	NT	-90000	-15.450644	20	PASS
	Ant1	5825	NV	NT	-90000	-15.450644	20	PASS
			LV	NT	-90000	-15.450644	20	PASS
			HV	NT	-91000	-15.622318	20	PASS

Voltage								
TestMode	Antenna	Channel	Voltage [Vdc]	Temperature (°C)	Deviation (Hz)	Deviation (ppm)	Limit (ppm)	Verdict
11N40MI MO	Ant0	5755	NV	NT	-89000	-15.464813	20	PASS
			LV	NT	-90000	-15.638575	20	PASS
			HV	NT	-90000	-15.638575	20	PASS
	Ant1	5755	NV	NT	-90000	-15.638575	20	PASS
			LV	NT	-90000	-15.638575	20	PASS
			HV	NT	-90000	-15.638575	20	PASS
	Ant0	5795	NV	NT	-90000	-15.53063	20	PASS
			LV	NT	-90000	-15.53063	20	PASS
			HV	NT	-90000	-15.53063	20	PASS
	Ant1	5795	NV	NT	-90000	-15.53063	20	PASS
			LV	NT	-90000	-15.53063	20	PASS
			HV	NT	-90000	-15.53063	20	PASS
11AC20M IMO	Ant0	5745	NV	NT	-89000	-15.491732	20	PASS
			LV	NT	-89000	-15.491732	20	PASS
			HV	NT	-89000	-15.491732	20	PASS
	Ant1	5745	NV	NT	-88000	-15.317668	20	PASS
			LV	NT	-89000	-15.491732	20	PASS
			HV	NT	-89000	-15.491732	20	PASS
	Ant0	5785	NV	NT	-89000	-15.384615	20	PASS
			LV	NT	-89000	-15.384615	20	PASS
			HV	NT	-90000	-15.557476	20	PASS
	Ant1	5785	NV	NT	-89000	-15.384615	20	PASS
			LV	NT	-89000	-15.384615	20	PASS
			HV	NT	-90000	-15.557476	20	PASS
	Ant0	5825	NV	NT	-90000	-15.450644	20	PASS
			LV	NT	-90000	-15.450644	20	PASS
			HV	NT	-90000	-15.450644	20	PASS
	Ant1	5825	NV	NT	-90000	-15.450644	20	PASS
			LV	NT	-90000	-15.450644	20	PASS
			HV	NT	-90000	-15.450644	20	PASS
11AC40M IMO	Ant0	5755	NV	NT	-88000	-15.291051	20	PASS
			LV	NT	-89000	-15.464813	20	PASS
			HV	NT	-89000	-15.464813	20	PASS
	Ant1	5755	NV	NT	-88000	-15.291051	20	PASS
			LV	NT	-89000	-15.464813	20	PASS
			HV	NT	-89000	-15.464813	20	PASS
	Ant0	5795	NV	NT	-89000	-15.358067	20	PASS
			LV	NT	-89000	-15.358067	20	PASS
			HV	NT	-89000	-15.358067	20	PASS
Ant1	5795	NV	NT	-89000	-15.358067	20	PASS	

Voltage								
TestMode	Antenna	Channel	Voltage [Vdc]	Temperature (°C)	Deviation (Hz)	Deviation (ppm)	Limit (ppm)	Verdict
			LV	NT	-89000	-15.358067	20	PASS
			HV	NT	-90000	-15.53063	20	PASS
11AC80M IMO	Ant0	5775	NV	NT	-89000	-15.411255	20	PASS
			LV	NT	-89000	-15.411255	20	PASS
			HV	NT	-89000	-15.411255	20	PASS
	Ant1	5775	NV	NT	-89000	-15.411255	20	PASS
			LV	NT	-89000	-15.411255	20	PASS
			HV	NT	-89000	-15.411255	20	PASS

Temperature								
TestMode	Antenna	Channel	Voltage [Vdc]	Temperature (°C)	Deviation (Hz)	Deviation (ppm)	Limit (ppm)	Verdict
11A	Ant0	5745	NV	-30	-87000	-15.143603	20	PASS
			NV	-20	-87000	-15.143603	20	PASS
			NV	-10	-87000	-15.143603	20	PASS
			NV	0	-87000	-15.143603	20	PASS
			NV	10	-87000	-15.143603	20	PASS
			NV	20	-87000	-15.143603	20	PASS
			NV	30	-88000	-15.317668	20	PASS
			NV	40	-88000	-15.317668	20	PASS
			NV	50	-88000	-15.317668	20	PASS
	Ant1	5745	NV	-30	-87000	-15.143603	20	PASS
			NV	-20	-87000	-15.143603	20	PASS
			NV	-10	-87000	-15.143603	20	PASS
			NV	0	-88000	-15.317668	20	PASS
			NV	10	-87000	-15.143603	20	PASS
			NV	20	-87000	-15.143603	20	PASS
			NV	30	-88000	-15.317668	20	PASS
			NV	40	-88000	-15.317668	20	PASS
			NV	50	-88000	-15.317668	20	PASS
	Ant0	5785	NV	-30	-88000	-15.211755	20	PASS
			NV	-20	-88000	-15.211755	20	PASS
			NV	-10	-88000	-15.211755	20	PASS
			NV	0	-88000	-15.211755	20	PASS
			NV	10	-88000	-15.211755	20	PASS
			NV	20	-88000	-15.211755	20	PASS
			NV	30	-88000	-15.211755	20	PASS
			NV	40	-88000	-15.211755	20	PASS
			NV	50	-88000	-15.211755	20	PASS
	Ant1	5785	NV	-30	-88000	-15.211755	20	PASS
			NV	-20	-88000	-15.211755	20	PASS
			NV	-10	-88000	-15.211755	20	PASS
			NV	0	-88000	-15.211755	20	PASS
			NV	10	-88000	-15.211755	20	PASS
			NV	20	-88000	-15.211755	20	PASS
			NV	30	-88000	-15.211755	20	PASS
			NV	40	-88000	-15.211755	20	PASS
			NV	50	-88000	-15.211755	20	PASS
Ant0	5825	NV	-30	-89000	-15.27897	20	PASS	
		NV	-20	-89000	-15.27897	20	PASS	
		NV	-10	-89000	-15.27897	20	PASS	



Temperature											
TestMode	Antenna	Channel	Voltage [Vdc]	Temperature (°C)	Deviation (Hz)	Deviation (ppm)	Limit (ppm)	Verdict			
			NV	0	-89000	-15.27897	20	PASS			
			NV	10	-89000	-15.27897	20	PASS			
			NV	20	-89000	-15.27897	20	PASS			
			NV	30	-89000	-15.27897	20	PASS			
			NV	40	-89000	-15.27897	20	PASS			
			NV	50	-89000	-15.27897	20	PASS			
	Ant1	5825	NV	-30	-88000	-15.107296	20	PASS			
			NV	-20	-88000	-15.107296	20	PASS			
			NV	-10	-88000	-15.107296	20	PASS			
			NV	0	-89000	-15.27897	20	PASS			
			NV	10	-89000	-15.27897	20	PASS			
			NV	20	-89000	-15.27897	20	PASS			
			NV	30	-89000	-15.27897	20	PASS			
			NV	40	-89000	-15.27897	20	PASS			
			NV	50	-89000	-15.27897	20	PASS			
			11N20MI MO	Ant0	5745	NV	-30	-89000	-15.491732	20	PASS
						NV	-20	-89000	-15.491732	20	PASS
						NV	-10	-90000	-15.665796	20	PASS
NV	0	-90000				-15.665796	20	PASS			
NV	10	-90000				-15.665796	20	PASS			
NV	20	-90000				-15.665796	20	PASS			
NV	30	-90000				-15.665796	20	PASS			
NV	40	-90000				-15.665796	20	PASS			
NV	50	-90000				-15.665796	20	PASS			
Ant1	5745	NV		-30	-89000	-15.491732	20	PASS			
		NV		-20	-89000	-15.491732	20	PASS			
		NV		-10	-90000	-15.665796	20	PASS			
		NV		0	-90000	-15.665796	20	PASS			
		NV		10	-90000	-15.665796	20	PASS			
		NV		20	-90000	-15.665796	20	PASS			
		NV		30	-90000	-15.665796	20	PASS			
		NV		40	-90000	-15.665796	20	PASS			
		NV		50	-90000	-15.665796	20	PASS			
Ant0	5785	NV		-30	-90000	-15.557476	20	PASS			
		NV		-20	-90000	-15.557476	20	PASS			
		NV		-10	-90000	-15.557476	20	PASS			
		NV		0	-90000	-15.557476	20	PASS			
		NV		10	-91000	-15.730337	20	PASS			
		NV		20	-90000	-15.557476	20	PASS			
		NV		30	-91000	-15.730337	20	PASS			

Temperature									
TestMode	Antenna	Channel	Voltage [Vdc]	Temperature (°C)	Deviation (Hz)	Deviation (ppm)	Limit (ppm)	Verdict	
			NV	40	-91000	-15.730337	20	PASS	
			NV	50	-90000	-15.557476	20	PASS	
	Ant1	5785	NV	-30	-90000	-15.557476	20	PASS	
			NV	-20	-90000	-15.557476	20	PASS	
			NV	-10	-90000	-15.557476	20	PASS	
			NV	0	-90000	-15.557476	20	PASS	
			NV	10	-91000	-15.730337	20	PASS	
			NV	20	-90000	-15.557476	20	PASS	
			NV	30	-90000	-15.557476	20	PASS	
			NV	40	-91000	-15.730337	20	PASS	
			NV	50	-91000	-15.730337	20	PASS	
			Ant0	5825	NV	-30	-91000	-15.622318	20
	NV	-20			-91000	-15.622318	20	PASS	
	NV	-10			-91000	-15.622318	20	PASS	
	NV	0			-91000	-15.622318	20	PASS	
	NV	10			-91000	-15.622318	20	PASS	
	NV	20			-91000	-15.622318	20	PASS	
	NV	30			-91000	-15.622318	20	PASS	
	NV	40			-91000	-15.622318	20	PASS	
	Ant1	5825	NV	50	-91000	-15.622318	20	PASS	
			NV	-30	-91000	-15.622318	20	PASS	
			NV	-20	-91000	-15.622318	20	PASS	
			NV	-10	-91000	-15.622318	20	PASS	
			NV	0	-91000	-15.622318	20	PASS	
			NV	10	-91000	-15.622318	20	PASS	
			NV	20	-91000	-15.622318	20	PASS	
			NV	30	-91000	-15.622318	20	PASS	
	11N40MI MO	Ant0	5755	NV	40	-91000	-15.622318	20	PASS
				NV	50	-91000	-15.622318	20	PASS
				NV	-30	-91000	-15.622318	20	PASS
NV				-20	-91000	-15.622318	20	PASS	
NV				-10	-91000	-15.622318	20	PASS	
NV				0	-91000	-15.622318	20	PASS	
NV				10	-91000	-15.622318	20	PASS	
NV				20	-91000	-15.622318	20	PASS	
Ant1		5755	NV	30	-91000	-15.622318	20	PASS	
			NV	40	-91000	-15.622318	20	PASS	

Temperature									
TestMode	Antenna	Channel	Voltage [Vdc]	Temperature (°C)	Deviation (Hz)	Deviation (ppm)	Limit (ppm)	Verdict	
			NV	-10	-90000	-15.638575	20	PASS	
			NV	0	-90000	-15.638575	20	PASS	
			NV	10	-90000	-15.638575	20	PASS	
			NV	20	-90000	-15.638575	20	PASS	
			NV	30	-90000	-15.638575	20	PASS	
			NV	40	-90000	-15.638575	20	PASS	
			NV	50	-90000	-15.638575	20	PASS	
	Ant0	5795	NV	-30	-90000	-15.53063	20	PASS	
			NV	-20	-90000	-15.53063	20	PASS	
			NV	-10	-90000	-15.53063	20	PASS	
			NV	0	-90000	-15.53063	20	PASS	
			NV	10	-90000	-15.53063	20	PASS	
			NV	20	-90000	-15.53063	20	PASS	
			NV	30	-91000	-15.703192	20	PASS	
	Ant1	5795	NV	40	-91000	-15.703192	20	PASS	
			NV	50	-90000	-15.53063	20	PASS	
			NV	-30	-90000	-15.53063	20	PASS	
			NV	-20	-90000	-15.53063	20	PASS	
			NV	-10	-90000	-15.53063	20	PASS	
			NV	0	-90000	-15.53063	20	PASS	
			NV	10	-90000	-15.53063	20	PASS	
	11AC20M IMO	Ant0	5745	NV	20	-90000	-15.53063	20	PASS
				NV	30	-90000	-15.53063	20	PASS
				NV	40	-90000	-15.53063	20	PASS
				NV	50	-90000	-15.53063	20	PASS
				NV	-30	-89000	-15.491732	20	PASS
				NV	-20	-89000	-15.491732	20	PASS
				NV	-10	-89000	-15.491732	20	PASS
Ant1		5745	NV	0	-89000	-15.491732	20	PASS	
			NV	10	-90000	-15.665796	20	PASS	
			NV	20	-90000	-15.665796	20	PASS	
			NV	30	-90000	-15.665796	20	PASS	
			NV	40	-90000	-15.665796	20	PASS	
			NV	50	-90000	-15.665796	20	PASS	
			NV	-30	-89000	-15.491732	20	PASS	
			NV	-20	-89000	-15.491732	20	PASS	
			NV	-10	-89000	-15.491732	20	PASS	
			NV	0	-89000	-15.491732	20	PASS	
			NV	10	-89000	-15.491732	20	PASS	
			NV	20	-90000	-15.665796	20	PASS	
			NV	30	-90000	-15.665796	20	PASS	

Temperature								
TestMode	Antenna	Channel	Voltage [Vdc]	Temperature (°C)	Deviation (Hz)	Deviation (ppm)	Limit (ppm)	Verdict
			NV	30	-90000	-15.665796	20	PASS
			NV	40	-90000	-15.665796	20	PASS
			NV	50	-90000	-15.665796	20	PASS
	Ant0	5785	NV	-30	-90000	-15.557476	20	PASS
			NV	-20	-90000	-15.557476	20	PASS
			NV	-10	-90000	-15.557476	20	PASS
			NV	0	-90000	-15.557476	20	PASS
			NV	10	-90000	-15.557476	20	PASS
			NV	20	-90000	-15.557476	20	PASS
			NV	30	-90000	-15.557476	20	PASS
			NV	40	-90000	-15.557476	20	PASS
			NV	50	-90000	-15.557476	20	PASS
			Ant1	5785	NV	-30	-90000	-15.557476
	NV	-20			-90000	-15.557476	20	PASS
	NV	-10			-90000	-15.557476	20	PASS
	NV	0			-90000	-15.557476	20	PASS
	NV	10			-90000	-15.557476	20	PASS
	NV	20			-90000	-15.557476	20	PASS
	NV	30			-90000	-15.557476	20	PASS
	NV	40			-90000	-15.557476	20	PASS
	Ant0	5825	NV	-30	-90000	-15.450644	20	PASS
			NV	-20	-90000	-15.450644	20	PASS
			NV	-10	-90000	-15.450644	20	PASS
			NV	0	-91000	-15.622318	20	PASS
			NV	10	-91000	-15.622318	20	PASS
			NV	20	-91000	-15.622318	20	PASS
			NV	30	-91000	-15.622318	20	PASS
			NV	40	-91000	-15.622318	20	PASS
			NV	50	-91000	-15.622318	20	PASS
	Ant1	5825	NV	-30	-90000	-15.450644	20	PASS
NV			-20	-90000	-15.450644	20	PASS	
NV			-10	-90000	-15.450644	20	PASS	
NV			0	-91000	-15.622318	20	PASS	
NV			10	-91000	-15.622318	20	PASS	
NV			20	-91000	-15.622318	20	PASS	
NV			30	-91000	-15.622318	20	PASS	
NV			40	-91000	-15.622318	20	PASS	
NV	50	-91000	-15.622318	20	PASS			
11AC40M	Ant0	5755	NV	-30	-89000	-15.464813	20	PASS

Temperature								
TestMode	Antenna	Channel	Voltage [Vdc]	Temperature (°C)	Deviation (Hz)	Deviation (ppm)	Limit (ppm)	Verdict
IMO			NV	-20	-89000	-15.464813	20	PASS
			NV	-10	-89000	-15.464813	20	PASS
			NV	0	-89000	-15.464813	20	PASS
			NV	10	-89000	-15.464813	20	PASS
			NV	20	-89000	-15.464813	20	PASS
			NV	30	-89000	-15.464813	20	PASS
			NV	40	-89000	-15.464813	20	PASS
			NV	50	-90000	-15.638575	20	PASS
	Ant1	5755	NV	-30	-89000	-15.464813	20	PASS
			NV	-20	-89000	-15.464813	20	PASS
			NV	-10	-89000	-15.464813	20	PASS
			NV	0	-89000	-15.464813	20	PASS
			NV	10	-89000	-15.464813	20	PASS
			NV	20	-89000	-15.464813	20	PASS
			NV	30	-90000	-15.638575	20	PASS
			NV	40	-90000	-15.638575	20	PASS
	Ant0	5795	NV	-30	-90000	-15.53063	20	PASS
			NV	-20	-90000	-15.53063	20	PASS
			NV	-10	-90000	-15.53063	20	PASS
			NV	0	-90000	-15.53063	20	PASS
			NV	10	-90000	-15.53063	20	PASS
			NV	20	-90000	-15.53063	20	PASS
			NV	30	-90000	-15.53063	20	PASS
			NV	40	-90000	-15.53063	20	PASS
	Ant1	5795	NV	-30	-90000	-15.53063	20	PASS
			NV	-20	-90000	-15.53063	20	PASS
			NV	-10	-90000	-15.53063	20	PASS
			NV	0	-90000	-15.53063	20	PASS
			NV	10	-90000	-15.53063	20	PASS
			NV	20	-90000	-15.53063	20	PASS
			NV	30	-90000	-15.53063	20	PASS
			NV	40	-90000	-15.53063	20	PASS
11AC80M IMO	Ant0	5775	NV	-30	-89000	-15.411255	20	PASS
			NV	-20	-89000	-15.411255	20	PASS
			NV	-10	-90000	-15.584416	20	PASS
			NV	0	-90000	-15.584416	20	PASS
			NV	10	-90000	-15.584416	20	PASS



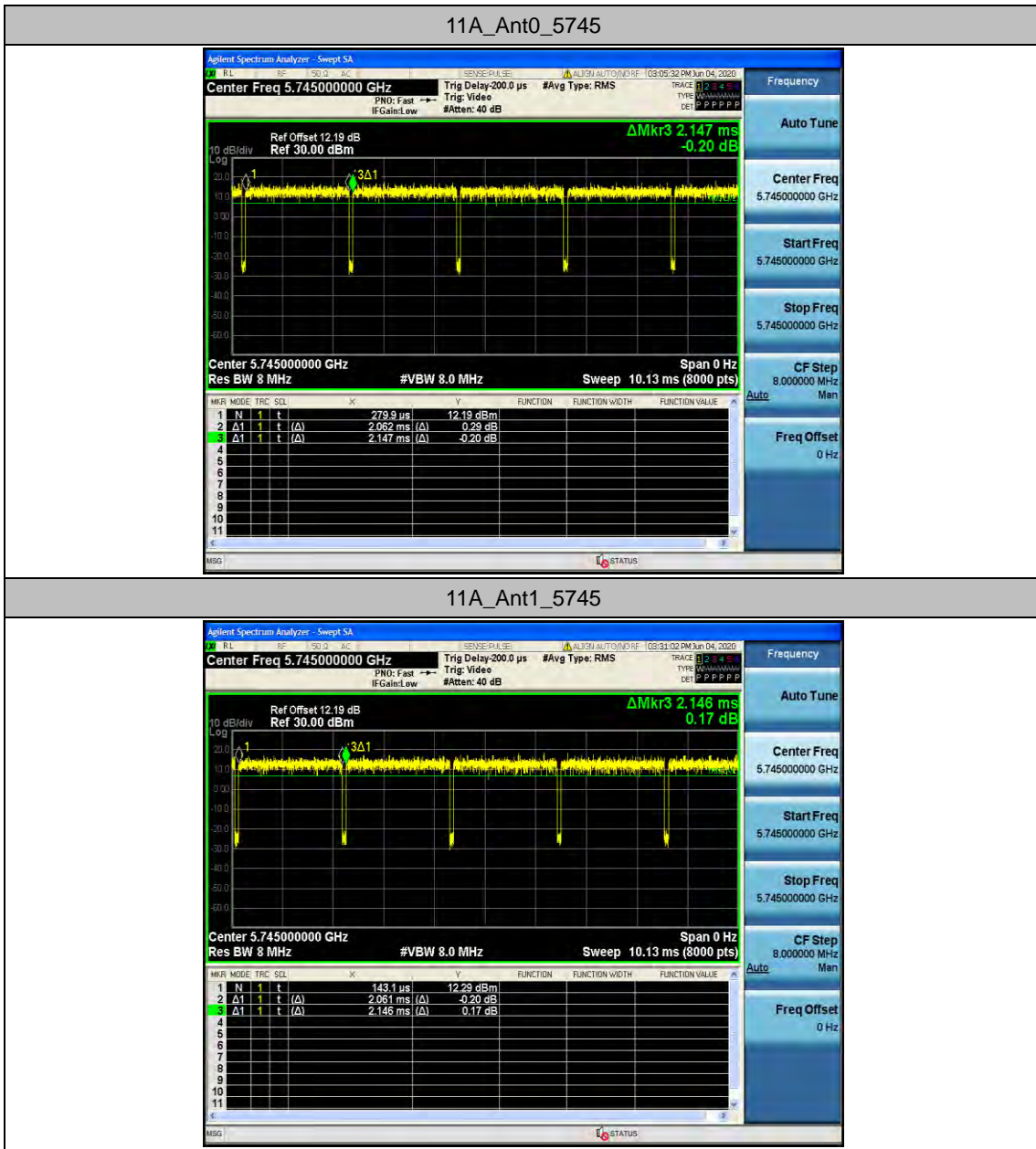
Temperature								
TestMode	Antenna	Channel	Voltage [Vdc]	Temperature (°C)	Deviation (Hz)	Deviation (ppm)	Limit (ppm)	Verdict
			NV	20	-90000	-15.584416	20	PASS
			NV	30	-90000	-15.584416	20	PASS
			NV	40	-90000	-15.584416	20	PASS
			NV	50	-90000	-15.584416	20	PASS
	Ant1	5775	NV	-30	-89000	-15.411255	20	PASS
			NV	-20	-89000	-15.411255	20	PASS
			NV	-10	-89000	-15.411255	20	PASS
			NV	0	-90000	-15.584416	20	PASS
			NV	10	-90000	-15.584416	20	PASS
			NV	20	-90000	-15.584416	20	PASS
			NV	30	-90000	-15.584416	20	PASS
			NV	40	-90000	-15.584416	20	PASS
			NV	50	-90000	-15.584416	20	PASS

## Appendix F: Duty Cycle

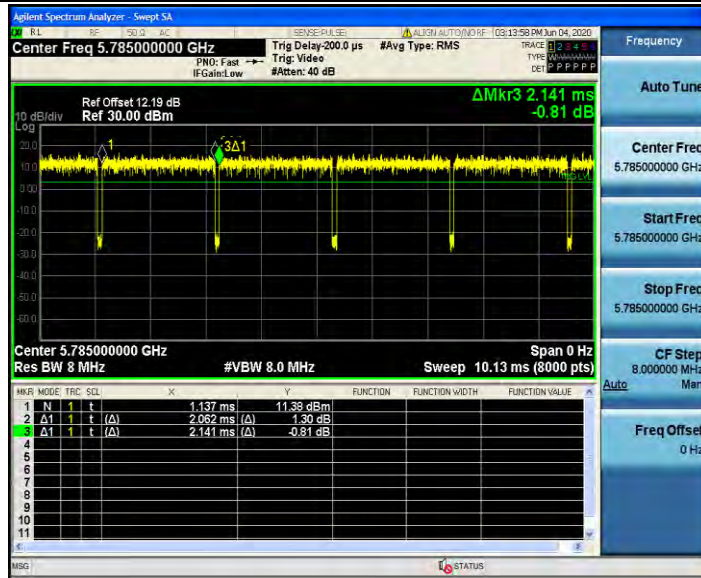
### Test Result

TestMode	Antenna	Channel	Transmission Duration [ms]	Transmission Period [ms]	Duty Cycle [%]
11A	Ant0	5745	2.06	2.15	96.05
	Ant1	5745	2.06	2.15	96.04
	Ant0	5785	2.06	2.14	96.33
	Ant1	5785	2.06	2.15	96.05
	Ant0	5825	2.06	2.14	96.33
	Ant1	5825	2.06	2.14	96.10
11N20MIMO	Ant0	5745	5.00	5.08	98.45
	Ant1	5745	5.00	5.08	98.31
	Ant0	5785	5.00	5.08	98.31
	Ant1	5785	5.00	5.08	98.31
	Ant0	5825	5.00	5.08	98.31
	Ant1	5825	5.00	5.08	98.33
11N40MIMO	Ant0	5755	2.43	2.50	96.86
	Ant1	5755	2.43	2.51	96.62
	Ant0	5795	2.43	2.50	96.86
	Ant1	5795	2.43	2.51	96.57
11AC20MIMO	Ant0	5745	5.01	5.09	98.41
	Ant1	5745	5.01	5.09	98.41
	Ant0	5785	5.01	5.09	98.41
	Ant1	5785	5.01	5.09	98.41
	Ant0	5825	5.01	5.09	98.41
	Ant1	5825	5.01	5.09	98.41
11AC40MIMO	Ant0	5755	2.43	2.52	96.63
	Ant1	5755	2.43	2.52	96.63
	Ant0	5795	2.43	2.52	96.58
	Ant1	5795	2.43	2.51	96.82
11AC80MIMO	Ant0	5775	1.15	1.23	93.10
	Ant1	5775	1.15	1.23	93.10

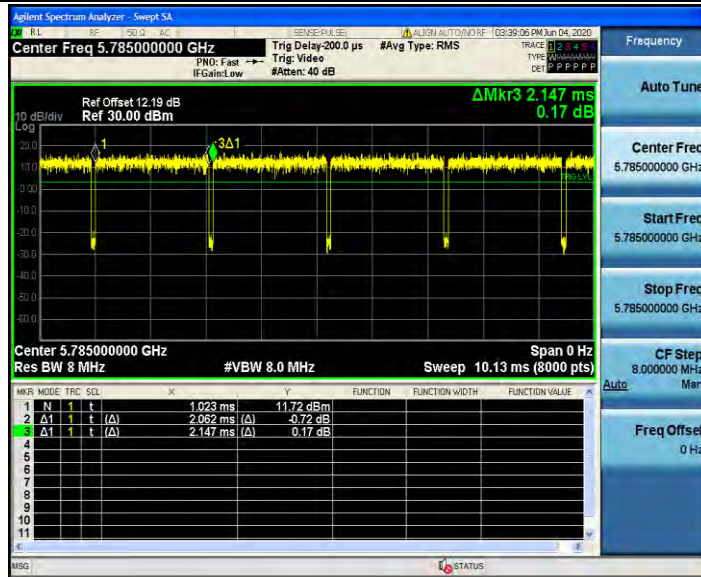
### Test Graphs



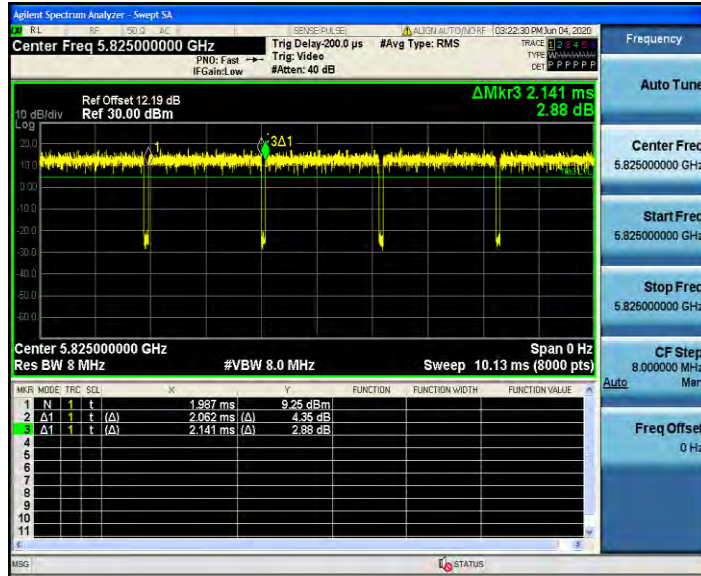
11A\_Ant0\_5785



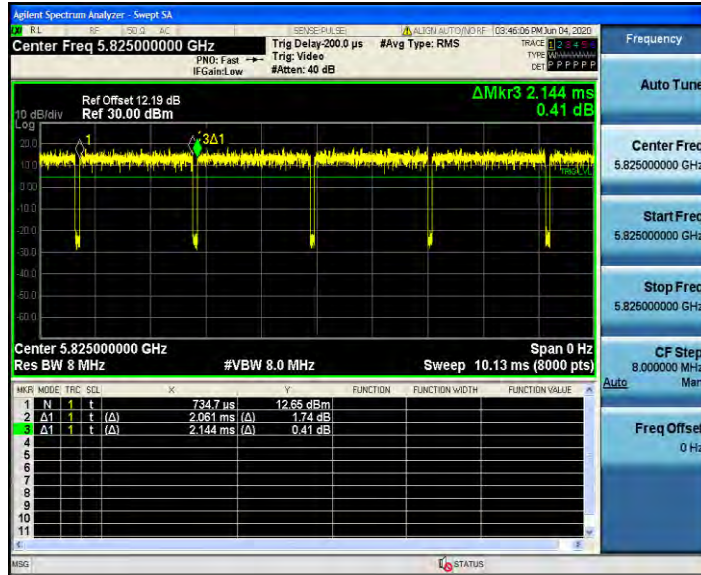
11A\_Ant1\_5785



11A\_Ant0\_5825

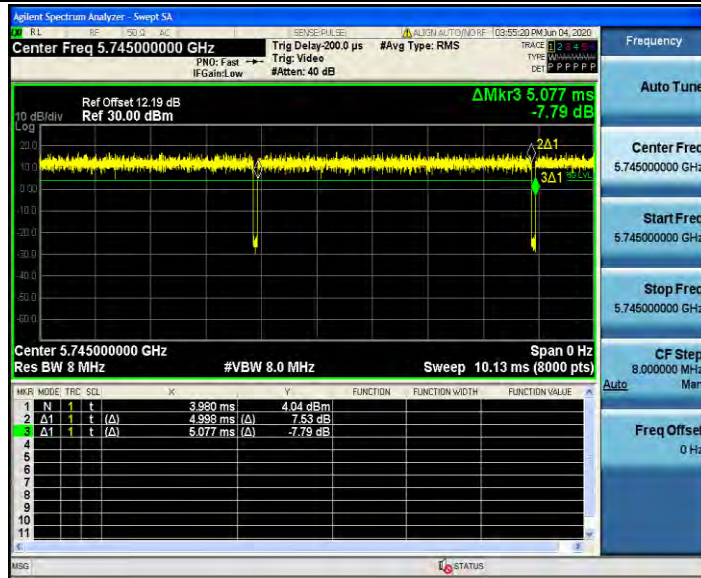


11A\_Ant1\_5825

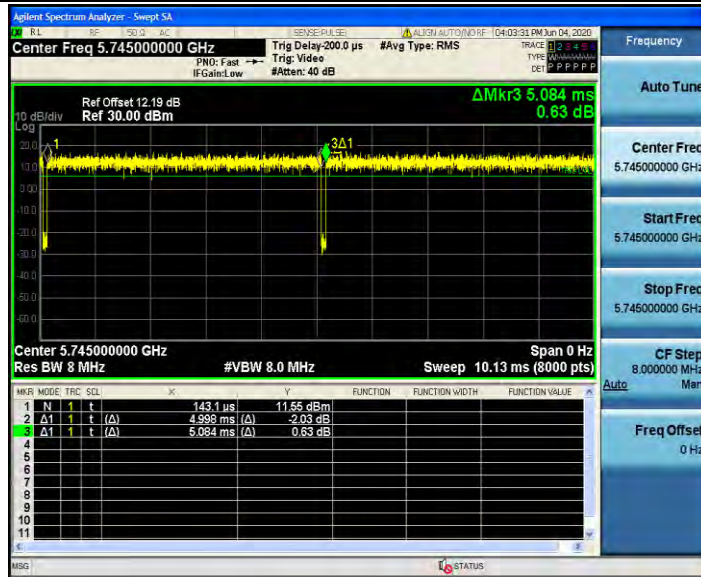




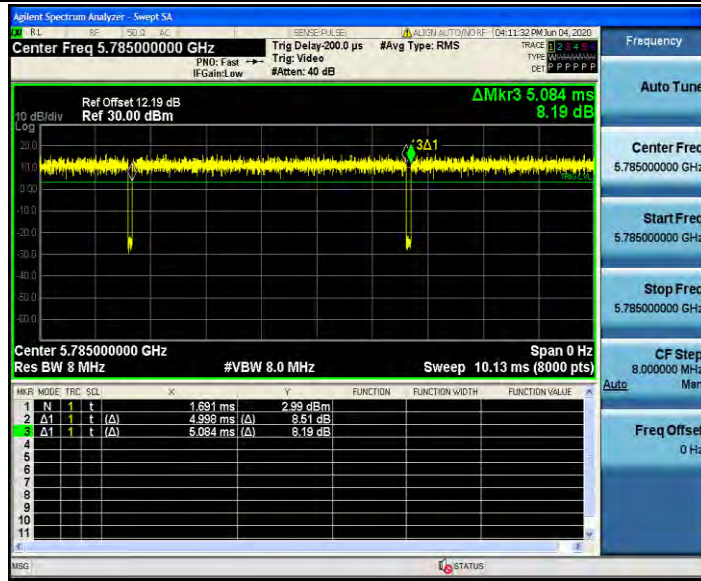
11N20MIMO\_Ant0\_5745



11N20MIMO\_Ant1\_5745



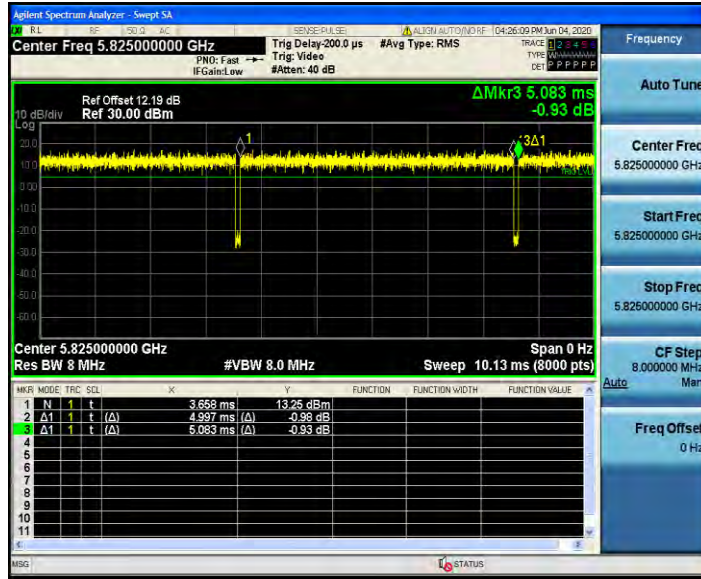
11N20MIMO\_Ant0\_5785



11N20MIMO\_Ant1\_5785



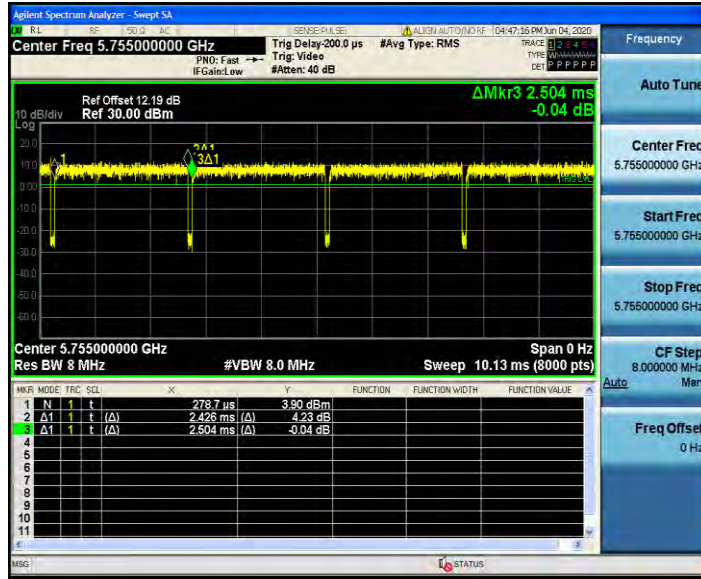
11N20MIMO\_Ant0\_5825



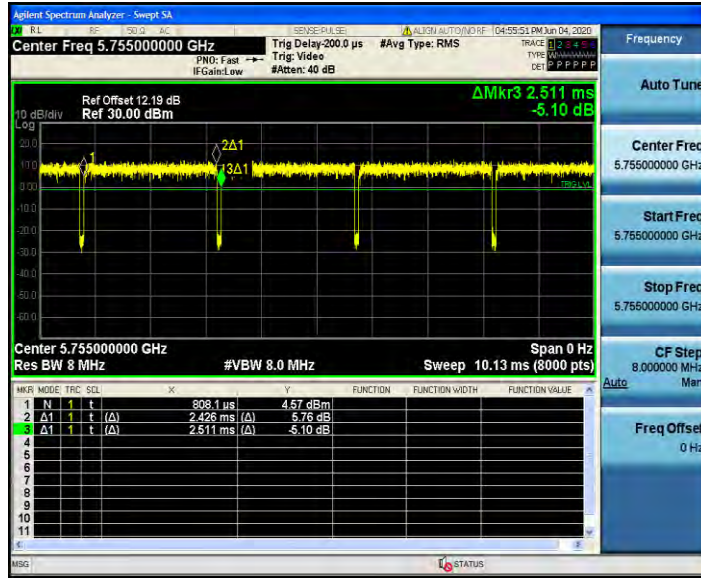
11N20MIMO\_Ant1\_5825



11N40MIMO\_Ant0\_5755

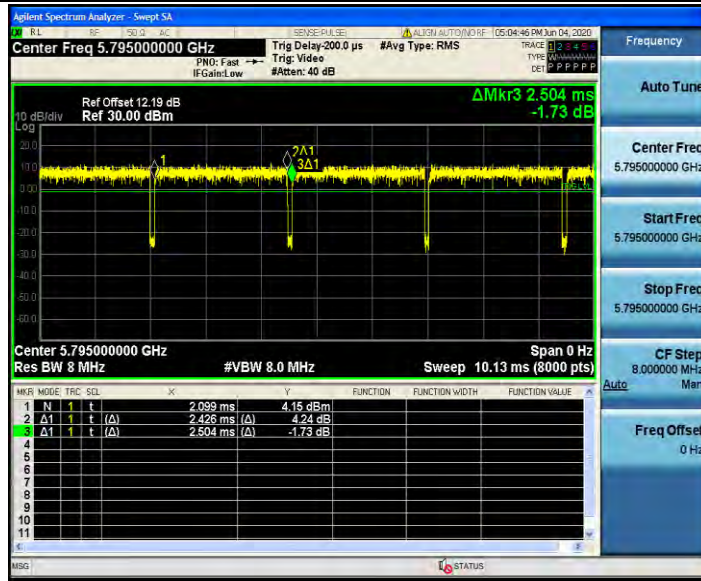


11N40MIMO\_Ant1\_5755

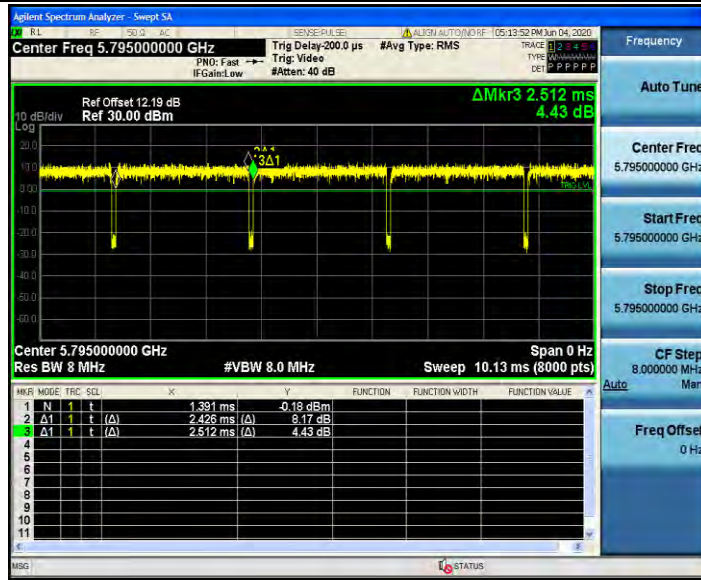




11N40MIMO\_Ant0\_5795

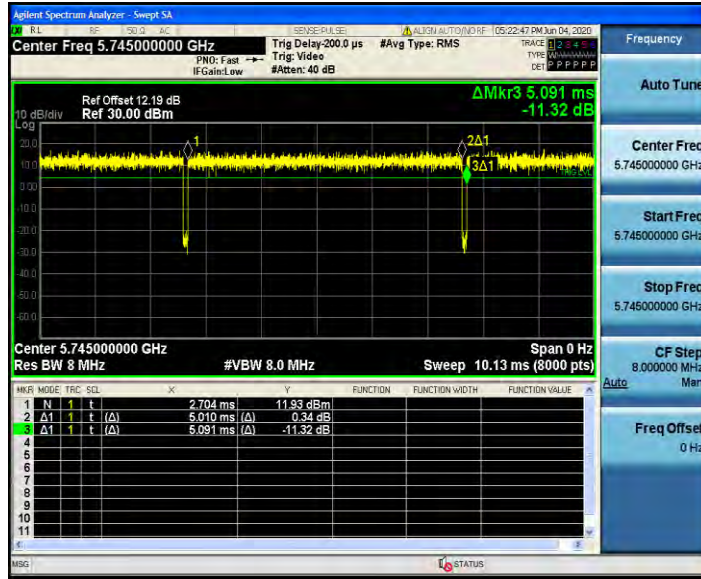


11N40MIMO\_Ant1\_5795

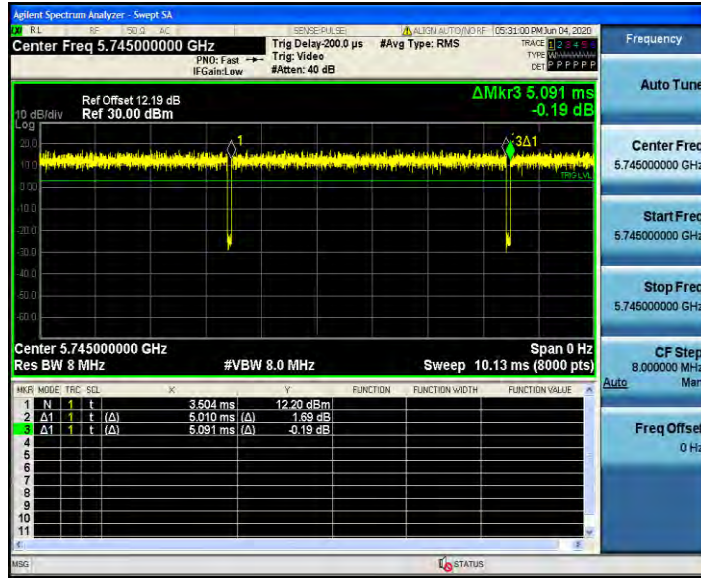




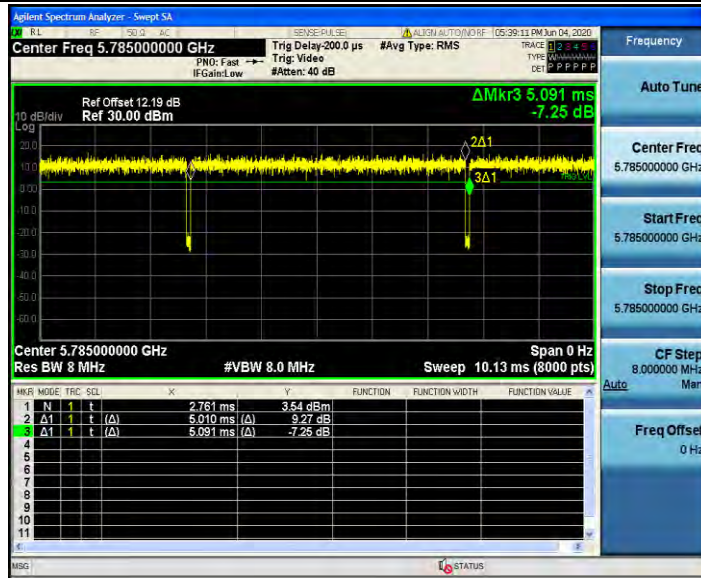
11AC20MIMO\_Ant0\_5745



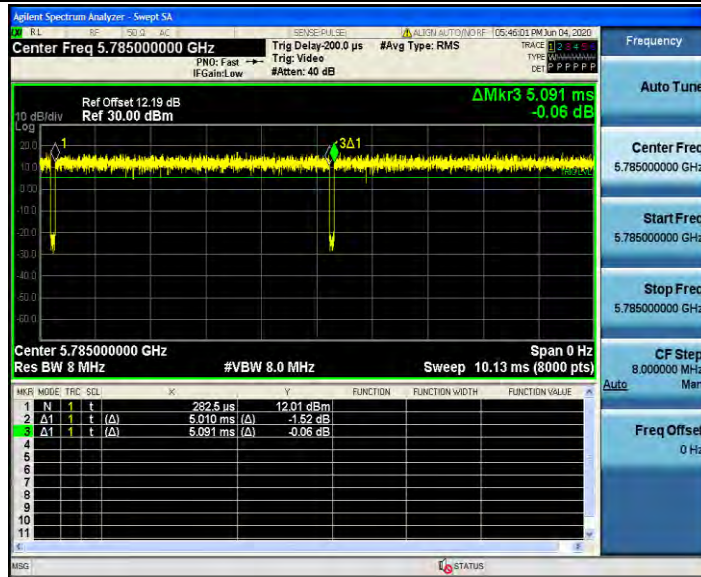
11AC20MIMO\_Ant1\_5745



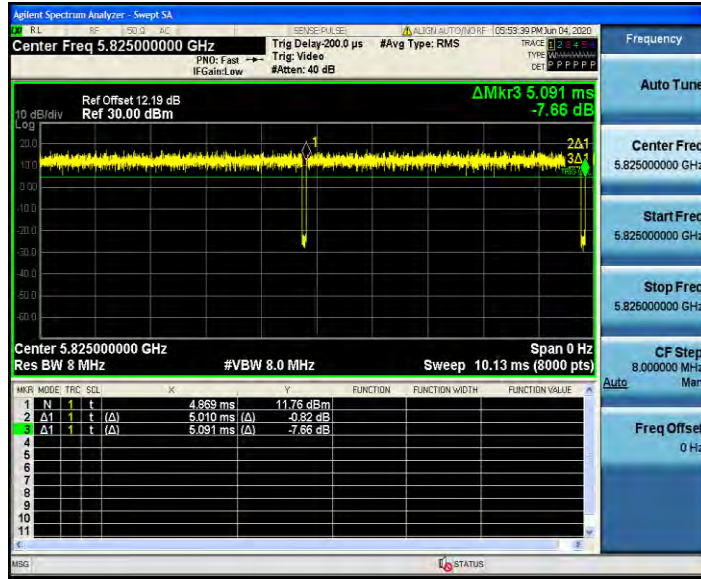
11AC20MIMO\_Ant0\_5785



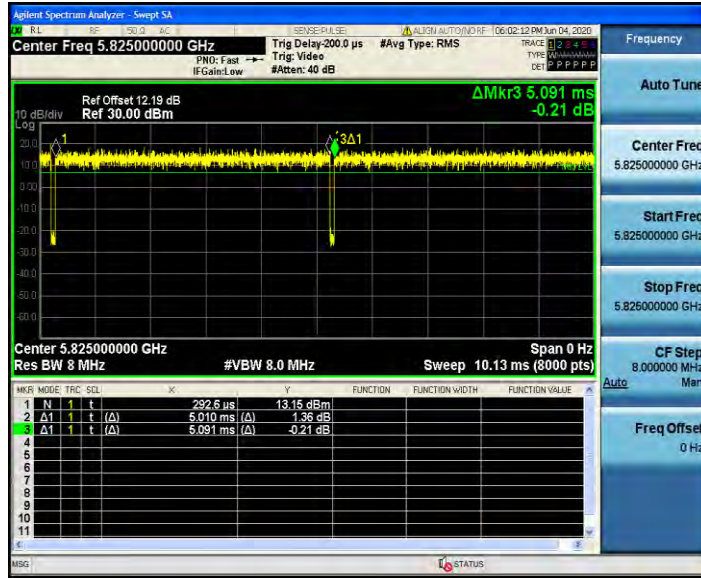
11AC20MIMO\_Ant1\_5785



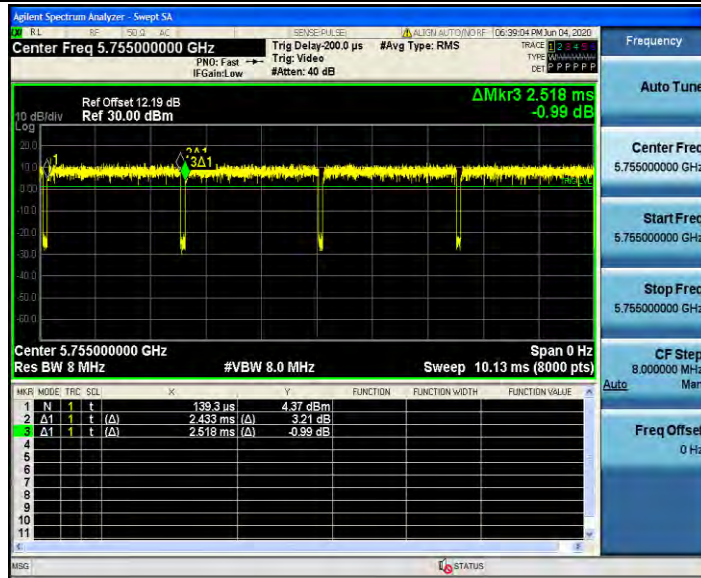
11AC20MIMO\_Ant0\_5825



11AC20MIMO\_Ant1\_5825



11AC40MIMO\_Ant0\_5755

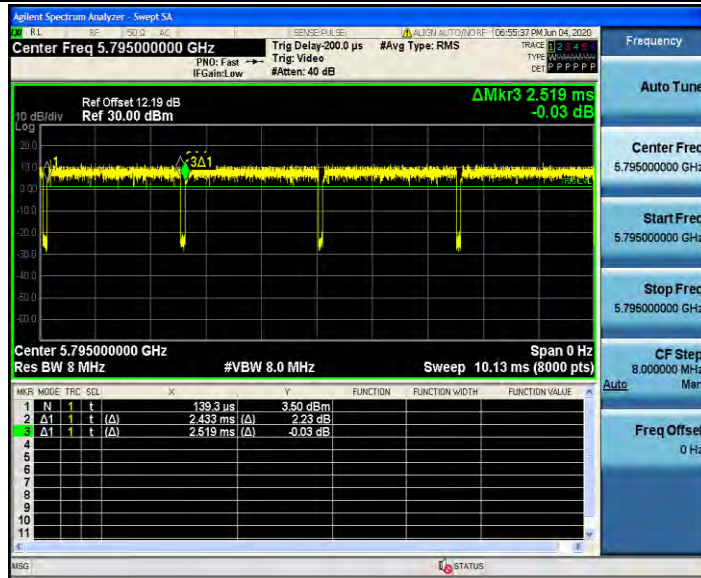


11AC40MIMO\_Ant1\_5755

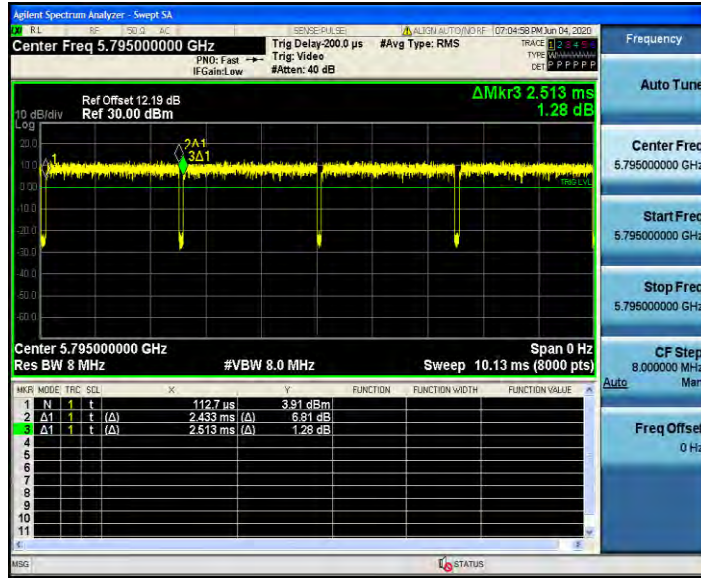




11AC40MIMO\_Ant0\_5795

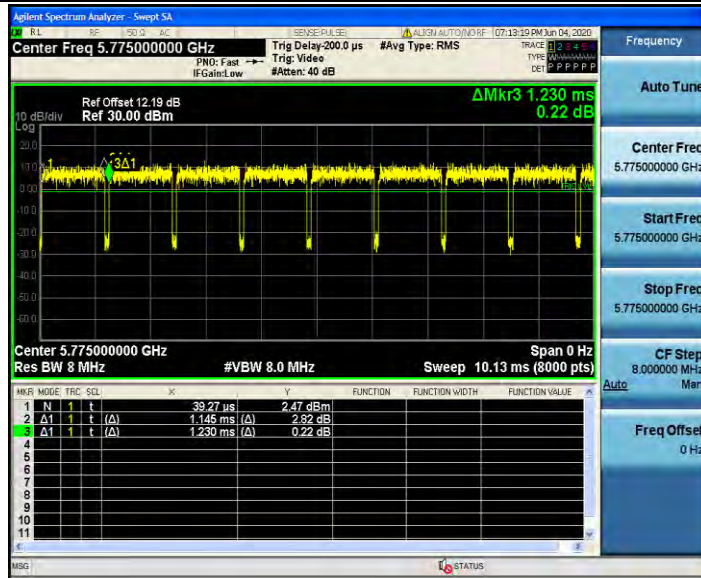


11AC40MIMO\_Ant1\_5795





11AC80MIMO\_Ant0\_5775



11AC80MIMO\_Ant1\_5775

