

供方 LOGO 和名称:



东莞市仁丰电子科技有限公司

Dongguan RF Electronic Technology Co., Ltd

公司地址: 东莞市塘厦镇清湖头三坑工业区1号 电话: 0769-38940168 传真: 0769-39010966 网址: <http://rflink.net.cn>

规格承认书

SPECIFICATION FOR APPROVAL

客户名称 (CUSTOMER)	广东九联科技股份有限公司
客户型号 (MODEL NO)	(由九联填写)
客户料号 (PART NO)	(由九联填写)
供方型号 (MODEL NO)	(由供方填写)
供方料号 (PART NO)	U00T02S000N03852 (由供方填写)
最小包装量 (MPQ)	100 (由供方填写)
品牌 (BRAND)	RfLink (由供方填写)
送样日期 (DATE)	2023/09/18 (由供方填写)
样品数量 (QUANTITY)	130 (由供方填写)

供方确认			客户确认		
APPROVED SIGNATURES			APPROVED SIGNATURES		
承办	审核	核准	检测	审核	核准
PREPARED BY	CHECKED BY	APPROVED BY	TESTED BY	CHECKED BY	APPROVED BY

备注: 承认书一式一份; 送样时由供方**手工签名和加盖公司公章**

地址: 广东省东莞市塘厦镇清湖头三坑路一号

电 话: 0769-38940168 传真: 0769-39010966

联系人: 韦良松 手机: 18877417721

电子邮箱: SevlynWei@rflink.net.cn

公司网址: www.rflink.net.cn

承 认 书

SPECIFICATION FOR APPROVAL

客户名称

CUSTOMER NAME: 九联

产品名称

PRODUCT NAME: 2.4G 内置天线 L=120mm

客户料号

CUSTOMER P/N:

仁丰料号

Ren Feng P/N: U00T02S000N03852 REV: A

	MANUFACTURER SIGNATURE	CUSTOMER SIGNATURE
CHECKED BY:	杨振	
AUDITOR BY:	宋俊	
APPROVED BY:	姚定军	
DATE:	2023-09-14	



东莞市仁丰电子科技有限公司

Dongguan RF Electronic Technology Co., Ltd

公司地址：东莞市塘厦镇清湖头三坑工业区1号 电话：0769-38940168 传真：0769-39010966 网址：<http://rflink.net.cn>

三、目录

Contents

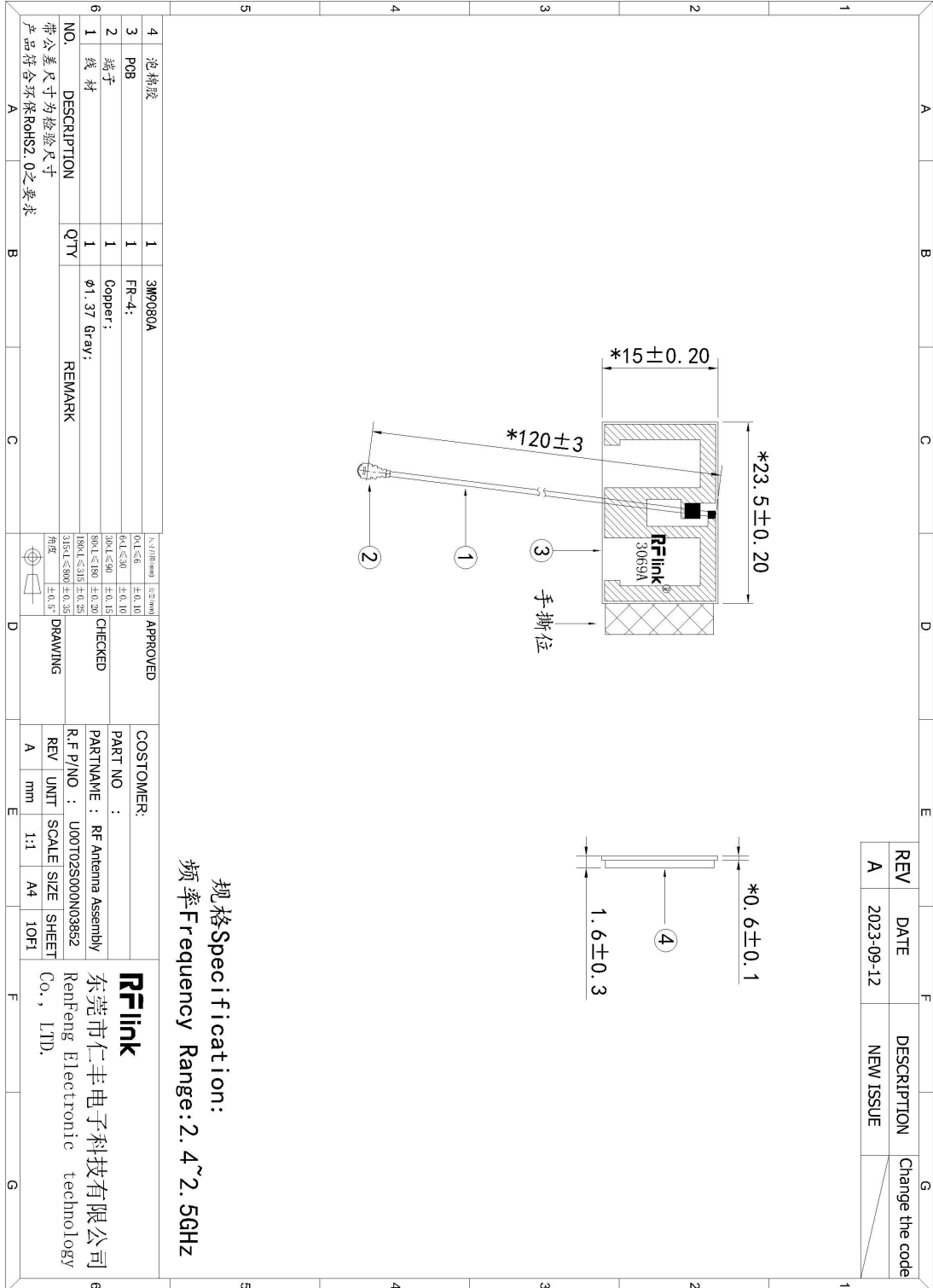
<i>Description</i>	<i>Page</i>
1、封面 Cover -----	1
2、履历表 Resume -----	2
3、目录 Contents-----	3
4、规格表 Specifications sheets -----	4
5、成品图 End product chart -----	5
6、测试报告 Testing report -----	6-9

四、规格表：

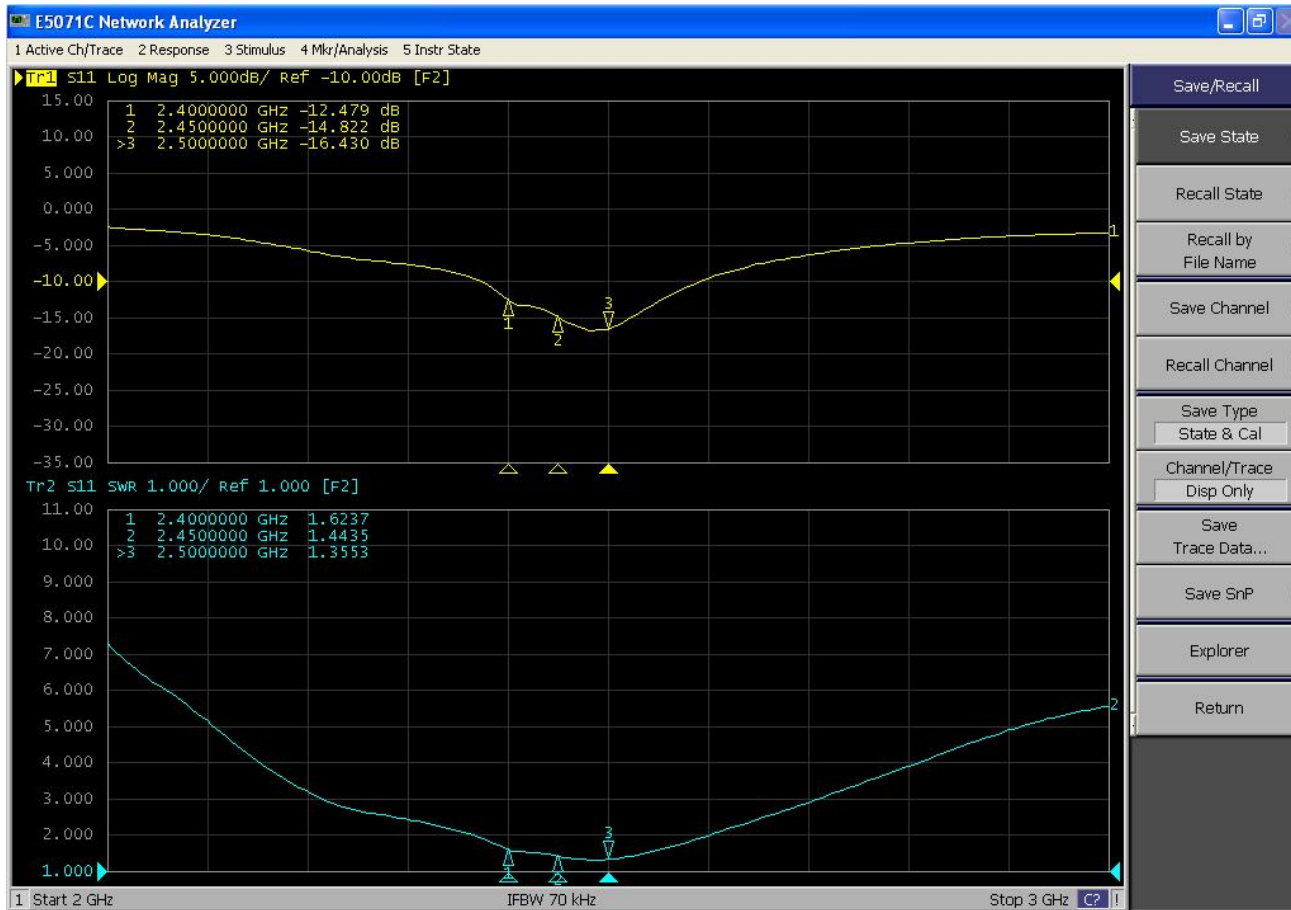
产品主要技术参数

主要技术指标		Main technical specifications	
频率范围 (MHZ)	2400~2500	Frequency Range (MHZ)	2400~2500
特性阻抗(Ω)	50	Impedance(Ω)	50
增益(dBi)	3.53	Peak Gain(dBi)	3.53
输出电压 驻波比	≤ 1.92	VSWR	≤ 1.92
极化方式	垂直极化	Polarization	Linear, Vertical
方向性	全向性	Radiation	Omni-directional
连接方式	Cable+端子	Connector Type	Cable+MHF Plug
物理性能		Physical Properties	
天线外套材料	PCB	Antenna cover	FR-4
工作温度	-20 $^{\circ}$ C~+70 $^{\circ}$ C	Operating Temp	-20 $^{\circ}$ C~+70 $^{\circ}$ C
保存温度	-20 $^{\circ}$ C~+70 $^{\circ}$ C	Storage Temp	-20 $^{\circ}$ C~+70 $^{\circ}$ C

五、成品图：

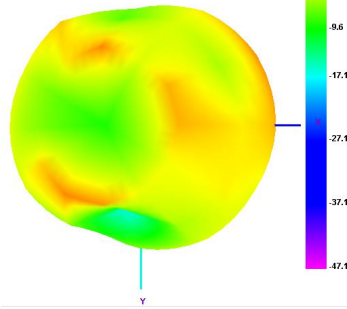


2.4G-2

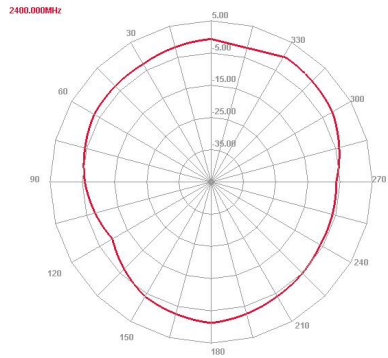


Freq (MHz)	Effi (%)	Gain (dBi)
2400	69.12	2.87
2410	66.79	2.93
2420	70.34	3.38
2430	71.35	3.44
2440	73.99	3.53
2450	73.43	3.48
2460	75.91	3.44
2470	76.28	3.44
2480	75.19	3.27
2490	74.91	3.07
2500	71.83	2.69

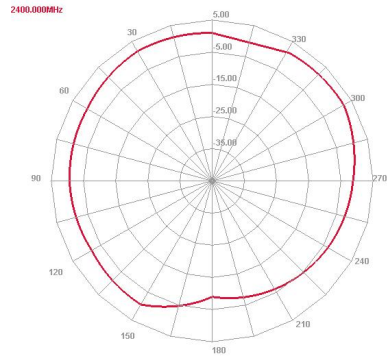
2400.000MHz



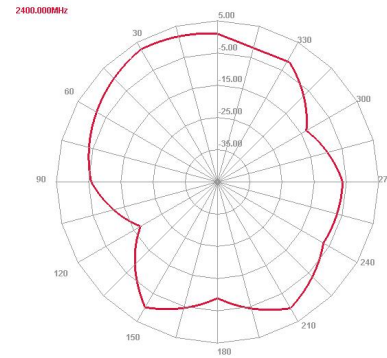
Horizontal



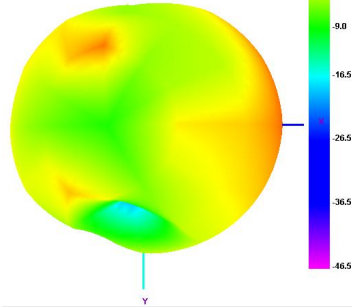
E1 Face



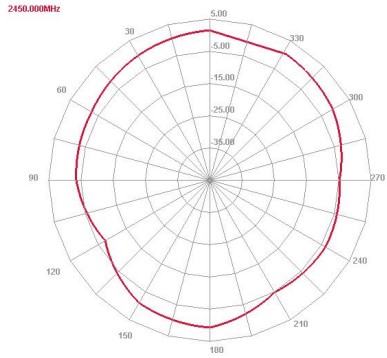
E2 Face



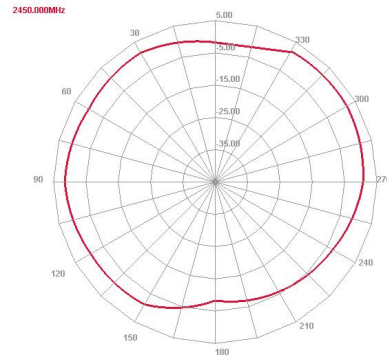
2450.000MHz



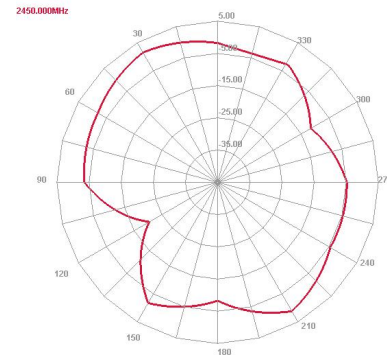
Horizontal



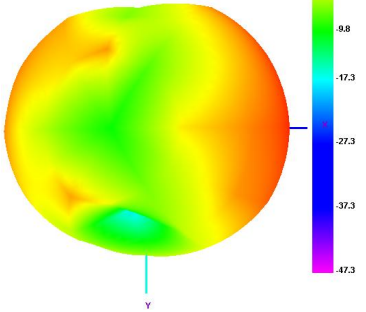
E1 Face



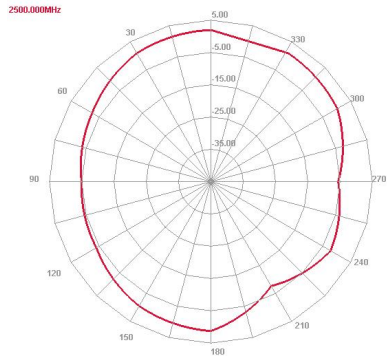
E2 Face



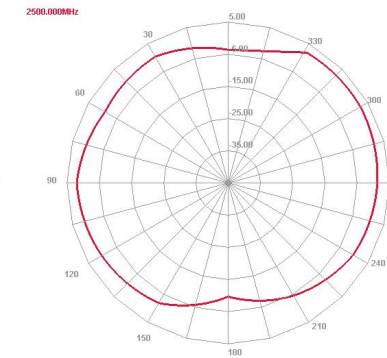
2500.000MHz



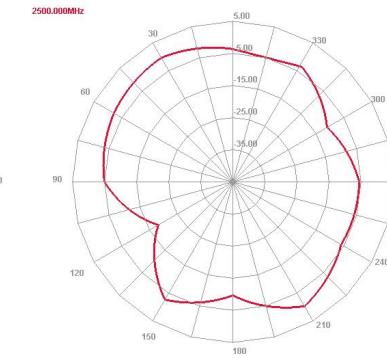
Horizontal



E1 Face



E2 Face



2.4G 802.11g 20M				
信道	1	6	11	速率
TRP	18.86	19.14	19.01	54M
TIS	-76.22	-76.77	-76.14	54M