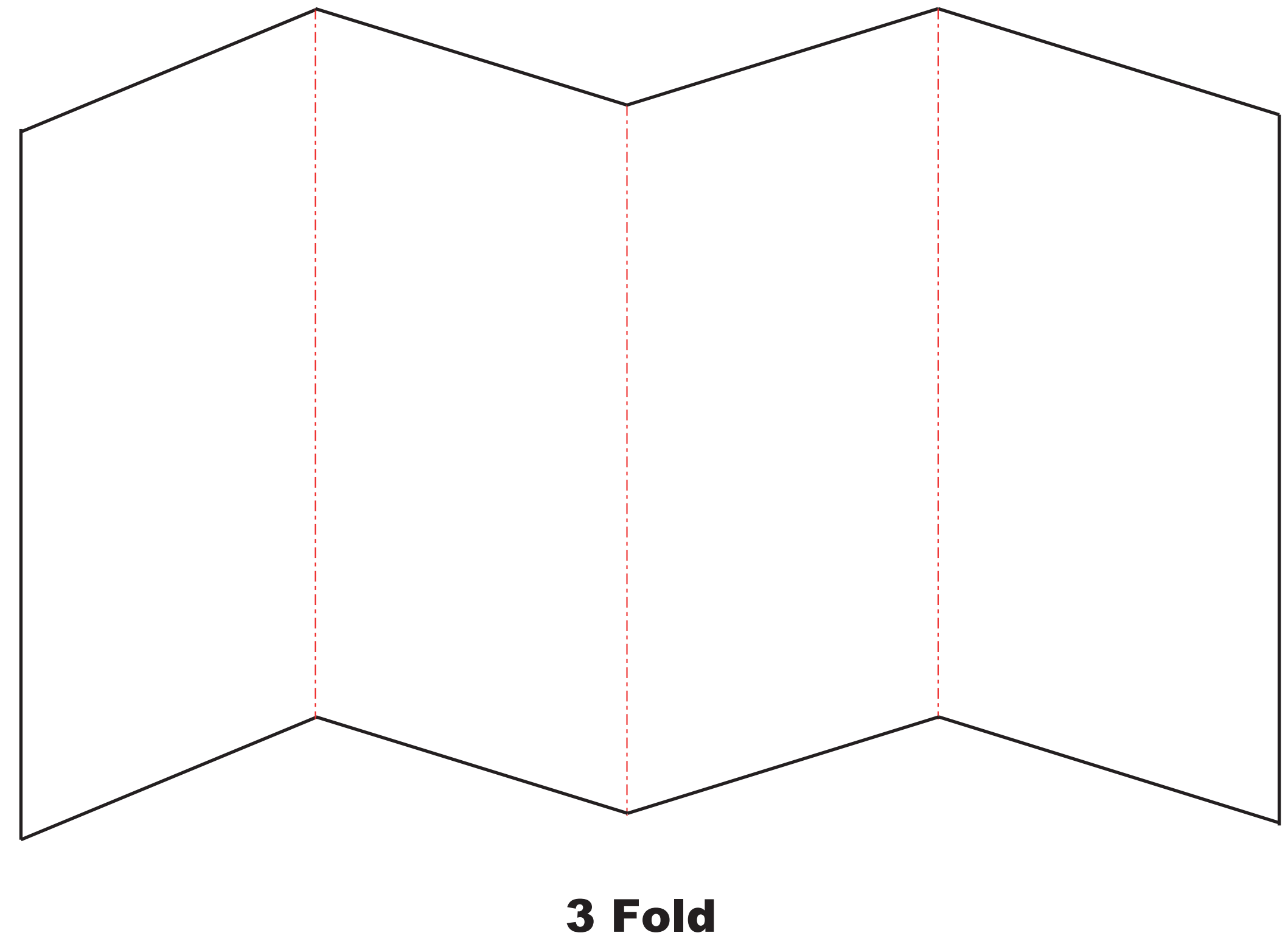
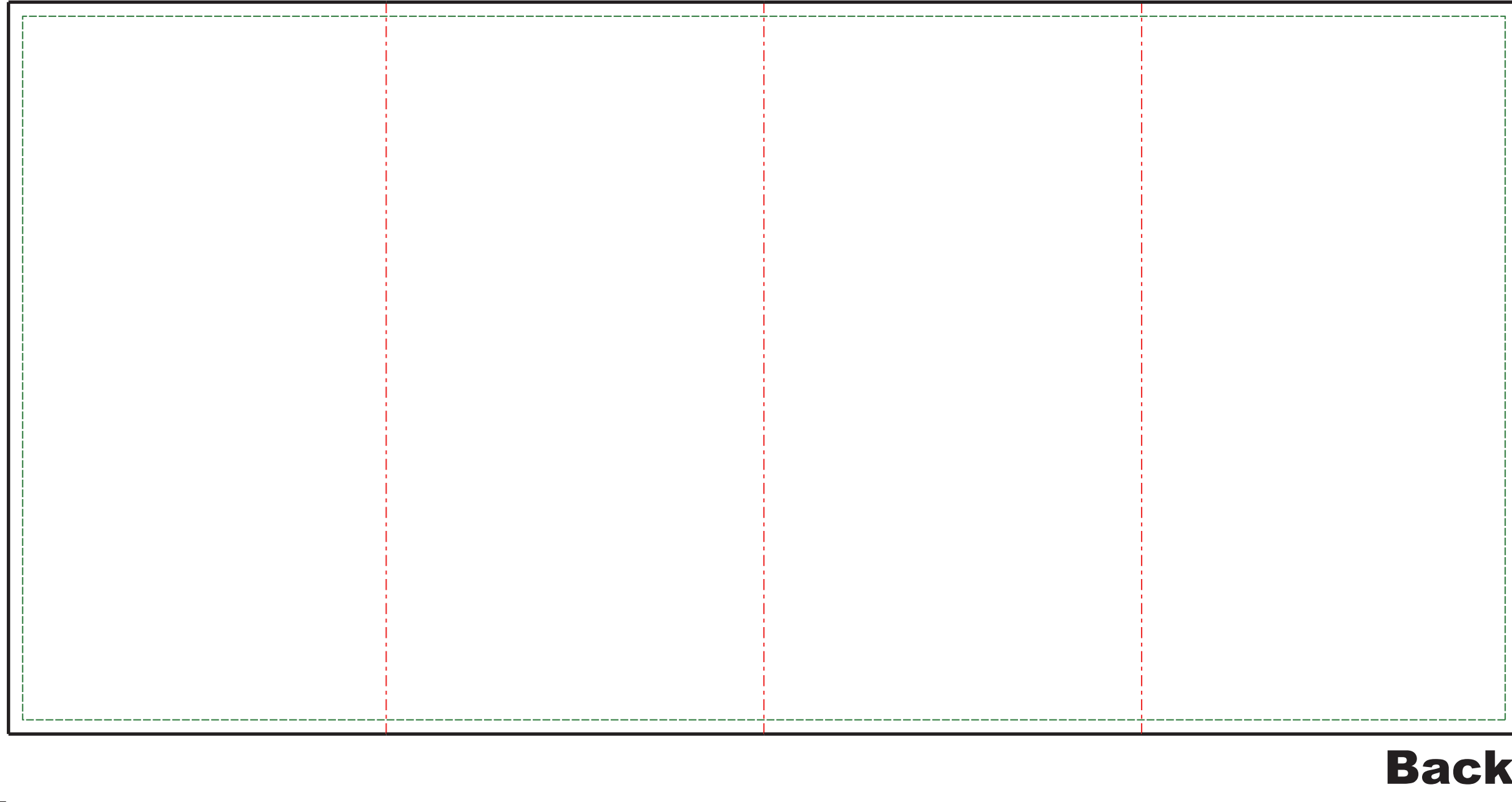
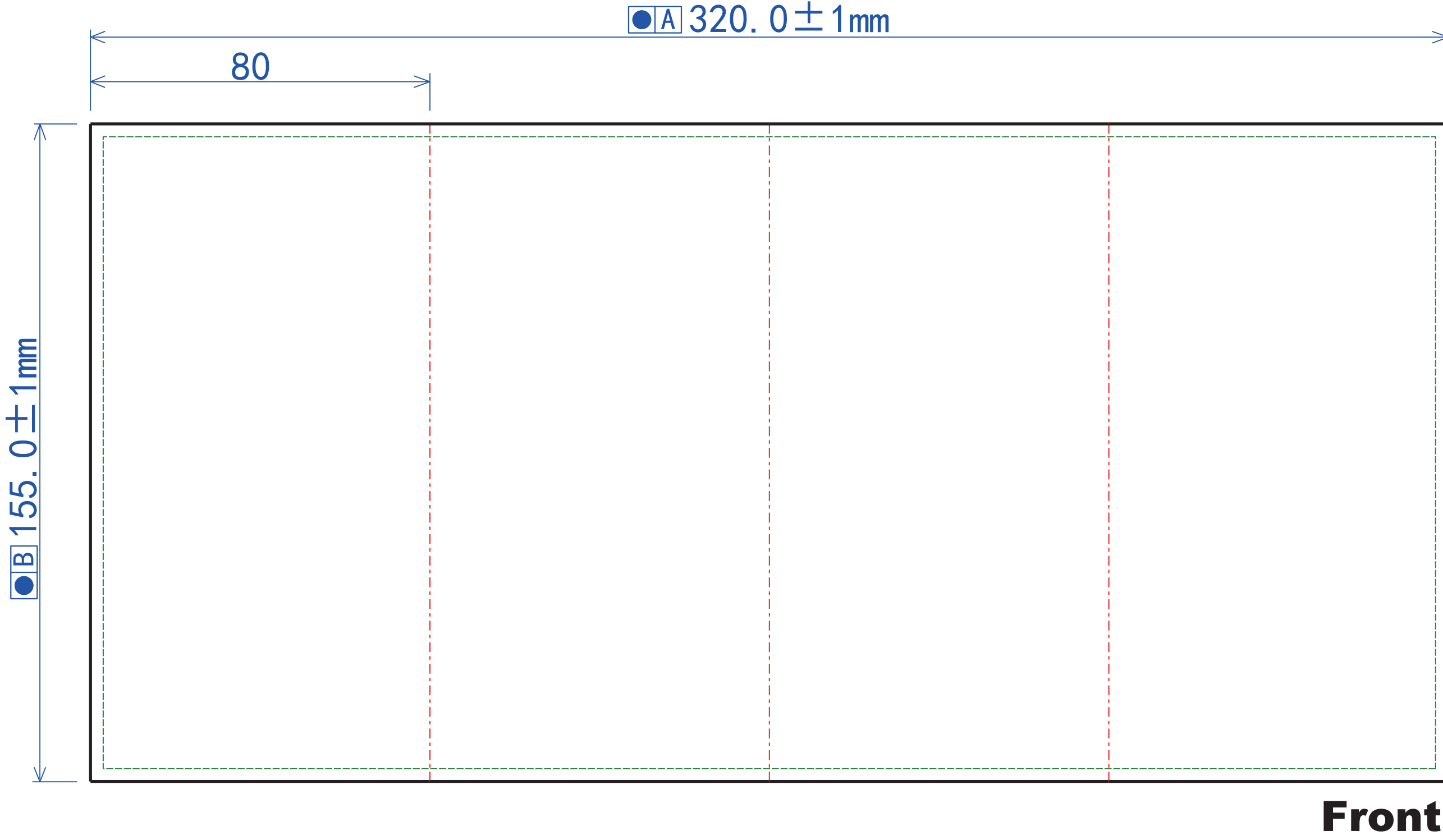


7	8	9	10	11	
TD.REV	PART.REV	ECO	DESCRIPTION	DRAWN	DATE
01	B	(ECR)	RELEASE FOR PRODUCTION	ALANYAO	02-MAR-23

LEGEND

	CREASE/ FOLD LINE	PERFORATION	GLUE ASSIST	PARTIAL CUT/ SLIT SCORE
COPY AREA	COPY FREE	BLEED	EMBOSS/DEBOSS	COATING

	Print Area TEXT / Brand Marking Ink, with Varnish or Coating		Print Area (Background Color) No TEXT / No Brand Marking Ink, with Varnish or Coating
	Non-Print Area No TEXT, No Brand Marking No Ink, No Varnish, No Coating		Print Area (Background Color) No TEXT / No Brand Marking Ink, No Varnish, No Coating
	Non-Print Area No TEXT / No Brand Marking No Ink, with Varnish or Coating		Glue Pattern / Panel No Varnish, No Coating Background color allowed



SPECIFICATION

- 1. **Material** : 100 lb. Gloss book
- 2. **Process** : Manual_3 Folds
- 3. **Unit** : mm
- 4. **FSC Requirement** : No
- 5. **Abrasion Resistance test** : 3M Tape Test(QATMEH0010)
- 6. **Storage Condition** : Room Temperature
- 7. **Expiry Date** : 12Months
- 8. **Must Meet 94/62/EC + TPCH Requirement**
- 9. **Denotes Critical Dimension For IQC Inspection**

AW NO: AIWO210804A005



AUTHORIZATION		UNLESS OTHERWISE SPECIFIED	PROJECT : UVT
DRAWN:	<i>Alanyao</i>	- DIMENSIONS ARE IN MILLIMETERS	PART NAME : Manual for UVT Toothbrush
CHECKED:	<i>Serena Song</i>	- TOLERANCE REFERENCE TO SPI TOLERANCING STANDARD	ITEM CODE : PMA0739Z1901
DESIGN:			DRAWING NO.: WO-210804A-801
ENGINEERING:		ONLY CRITICAL AND REFERENCE DIMENSIONS ARE SHOWN ON THIS DRAWING. UNSPECIFIED GEOMETRY ACCORDING TO 3D MODEL (SEE 3D MODEL INFORMATION).	DRAWN : ALANYAO
MANU,ENG'G:			CHECKED : SERENA SONG
MARKETING:			DATE : 02-MAR-23
CONFIDENTIAL AND PROPRIETARY			A4
THESE DRAWINGS ARE OF CONFIDENTIAL AND PROPRIETARY NATURE AND ALL RIGHTS ARE EITHER OWNED BY OR LICENSED TO OR PERMITTED TO USE ("RIGHTS") BY HAYCO MANUFACTURING LIMITED OR ITS ASSOCIATES OR AFFILIATES ("HAYCO"). UNLESS OTHERWISE YOU ARE THE LAWFUL OWNER OF THESE DRAWINGS. IF YOU RECEIVE SUCH DRAWINGS FOR THE PURPOSE OF EITHER QUOTATION OR MOLD MAKING, YOU UNDERTAKE NOT TO MISAPPROPRIATE ANY RIGHTS AND AGREE THAT ALL RIGHTS OF DRAWINGS OR PRODUCTS MADE FROM SUCH DRAWINGS (INCLUDING THEIR VARIATIONS) SHALL BE VESTED WITH HAYCO OR ITS ORIGINAL OWNERS. IF SUCH DRAWINGS OR PRODUCTS ARE SHOWN TO ANY THIRD PARTY, YOU MUST MAKE SUCH THIRD PARTY AWARE THAT SUCH DRAWINGS AND OR PRODUCTS ARE OF CONFIDENTIAL AND PROPRIETARY AND ARE SUBJECT TO CONFIDENTIALITY.			SCALE: 1:1 SHEET: 1 OF 2

CONFIDENTIAL AND PROPRIETARY

THESE DRAWINGS ARE OF CONFIDENTIAL AND PROPRIETARY NATURE AND ALL RIGHTS ARE EITHER OWNED BY OR LICENSED TO OR PERMITTED TO USE ("RIGHTS") BY HAYCO MANUFACTURING LIMITED OR ITS ASSOCIATES OR AFFILIATES ("HAYCO"). UNLESS OTHERWISE YOU ARE THE LAWFUL OWNER OF THESE DRAWINGS. IF YOU RECEIVE SUCH DRAWINGS FOR THE PURPOSE OF EITHER QUOTATION OR MOLD MAKING, YOU UNDERTAKE NOT TO MISAPPROPRIATE ANY RIGHTS AND AGREE THAT ALL RIGHTS OF DRAWINGS OR PRODUCTS MADE FROM SUCH DRAWINGS (INCLUDING THEIR VARIATIONS) SHALL BE VESTED WITH HAYCO OR ITS ORIGINAL OWNERS. IF SUCH DRAWINGS OR PRODUCTS ARE SHOWN TO ANY THIRD PARTY, YOU MUST MAKE SUCH THIRD PARTY AWARE THAT SUCH DRAWINGS AND OR PRODUCTS ARE OF CONFIDENTIAL AND PROPRIETARY AND ARE SUBJECT TO CONFIDENTIALITY.

ARTWORK	INKS

TD.REV	PART.REV	ECO	DESCRIPTION	DRAWN	DATE
01	B	(ECR)	RELEASE FOR PRODUCTION	ALANYAO	02-MAR-23

ORALUCENT

WELCOME

Congratulations on taking charge of your dental health. Get ready to experience a whole new level of clean & bright. The Oralucent toothbrush harnesses advanced light technology that outshines conventional toothbrushes. Please read all instructions prior to first use. In just minutes, you'll be on your way to enhanced oral health.

CONTENTS

What's in the box
Main features
Preparing for use
Changing the brush
Operating the brush
Setting motor speed
Replaceable brush heads
Cleaning and storage
Troubleshooting
Warranty
Important notices
Warnings and safeguards

WHAT'S IN THE BOX

- Oralucent toothbrush handle with brush head and LED light
- Replaceable brush head
- Charging base
- Wall charging plug with USB port
- Toothbrush head cover

MAIN FEATURES

- EYE COMFORT TECHNOLOGY**
Patented technology increases light intensity while you brush, eliminating eye discomfort from bright light throughout clean.
- GENTLE BRISTLES**
The non-abrasive, soft premium bristles provide a gentle yet thorough clean.
- BLUE LIGHT TECHNOLOGY**
Uses the same type of blue light used in dental offices for whitening treatments. Note: When combined with optional Oralucent Light-activated O₂ Gel, (sold separately) antibacterial and whitening benefits are accelerated.
- RED LIGHT TECHNOLOGY**
Therapeutic red light has been shown to stimulate circulation and promote cellular renewal.
- 2 MINUTE INDICATOR**
A double pulse will be felt after 2 minutes to indicate the minimum recommended brushing time. Note: Lights will stay on with continued brushing for up to 4 minutes to encourage longer brushing time. Device will automatically turn off after 4 minutes.
- CUSTOMIZABLE SPEED/MANUAL MODE**
To set your preferred speed/vibration level, start from OFF position and hold down button for 3 seconds to activate the brushing speed ramp. Release button when preferred speed/intensity is reached. Manual mode (no motor) is one option in the loop.

CHARGING THE BRUSH

After connecting the charging base to a power source, place the toothbrush into the base. Before first use, charge brush for 4-8 hours. Neck of brush head will initially glow in red when low in charge and then will pulse in purple color as amount of charge increases. Purple will turn solid when fully charged. A full charge will last at least one week, assuming 2 minutes of brushing 3X a day. A red glow in brush neck indicates it is time to recharge. While not necessary, we recommend plugging the unit in the charging dock after each use. Doing so will help to dry properly and maintain a secure, upright position. We recommend unplugging the USB cable when no charge is needed. Note: It is normal for the toothbrush handle to warm when charging.

OPERATING THE BRUSH

Your Oralucent toothbrush is easy to use. With bristles, apply a small amount of your favorite toothpaste and optional O₂ Gel Light-activated booster (sold separately). Press the button and begin brushing. The light will intensify to therapeutic levels as you brush. A double pulse will indicate 2 minutes of brushing time has been reached. The light and vibration will continue for 4 minutes, to encourage longer brushing time. Once brushing stops, light automatically adjust to low level intensity. Press button to turn off.

SETTING MOTOR SPEED

To customize your speed/vibration intensity, start with the brush off, and hold button with your thumb for 3 seconds to activate the speed ramp. Once the desired level is reached, release your thumb from the button. Your preferred level will be locked into memory until reprogrammed. Note: To set to manual mode (no motor/vibration), but with light on, release button hold when the motor decays to a pulse during the speed ramp cycle.

ORALUCENT CUSTOMER CARE

oralucent.com
customerservice@oralucent.com
877-279-8781

Distributed by Oralucare, Inc.
Long Beach, California 90803

Front

REPLACEABLE BRUSH HEADS

The American Dental Association recommends replacing brush heads every three months, or a minimum. Oralucent replaceable brush heads are designed exclusively for use with the Oralucent toothbrush. To maintain maximum effectiveness, it is important to replace them regularly - before they become worn.

Detaching the brush head:

- Grasp the brush handle firmly in one hand
- Use your other hand to pull brush head straight off the brush handle - do not twist
- Wipe away any accumulated toothpaste and debris on the inner shaft with toothbrush light.

Attaching the brush head:

Slide the open end of the brush head onto the handle shaft, aligning the brush head to the bristles from the same direction as the button on the handle, and push to secure. A click indicates the brush head is properly attached.

To protect brush heads against premature wear or damage, follow these tips:

- Rinse brush heads well after each use.
- Never rinse the brush heads with hot water. Doing so may damage the bristles or brush head.
- Do not exert unnecessary pressure while brushing. Use only the amount of pressure required to maintain contact with your teeth and gums.
- Allow brush heads to air dry thoroughly between uses.
- To order brush heads, O₂ Gel light-activated booster or any Oralucare products, visit Oralucare.com or call 877-279-8781.

Cleaning and Storage:

Rinse the brush head thoroughly under running water until it is free of all remaining toothpaste and debris. If necessary, wipe clean your unit with a damp, soft cloth. Allow to air dry upright in charging base.

Brushing Precautions

Disconnect the charging base from power outlet and wipe clean with a soft, damp cloth, after all parts to dry before reassembling. Keep the unit, charging base and wall charger in a dry place, away from children. Use only the Oralucent charger to recharge your Oralucent toothbrush. This appliance contains a rechargeable battery that is non-replaceable.

TROUBLESHOOTING

Problem: Toothbrush is not charging.
Possible cause: Toothbrush may not be properly inserted into the charging dock or charging base may not be connected to a power source.
Solution: Confirm that toothbrush is fully inserted into the charging base. Check that the charging base is connected to a power source. A red glow in neck indicates charging is in full progress. Neck color will turn to purple when charge is increased.

Problem: Toothbrush will not operate.
Possible cause: Toothbrush may require charging.
Solution: Check that toothbrush has sufficient charge - A purple glow in neck confirms.

Problem: Light is coming on when button has not been pressed.
Possible cause: Inner shaft under brush head may have accumulated water, debris or residual toothpaste and/or gel.
Solution: Remove brush head and wipe inner shaft clean and dry. If light continues to come on outside of mouth, contact Customer Care.

Problem: Light is not staying on while brushing.
Possible cause: Bristles may not be saturated with water.
Solution: Check that bristles are thoroughly wet and maintain a firm grip on the handle while brushing. If light is still not coming on after brushing for 10 seconds, contact Customer Care.

Problem: Preferred speed setting is difficult to reach.
Possible cause: Button may not have been held down for a full 3 seconds (Starting from the off position).
Solution: Press down button with thumb until brushing speed ramp is activated. Once desired speed, or no motor setting for manual mode, is reached, release the button and setting will lock in.

Problem: Increased pressure is required when brushing for sufficient cleaning.
Possible cause: Brush head may be worn or damaged.
Solution: Replace the brush head at least every three months, as recommended by the American Dental Association.

WARRANTY

Your Oralucent toothbrush has a 1-year warranty from the date of purchase.

Within the warranty period and with proof of purchase, we will replace the complete appliance, free of charge, for any defects in the appliance resulting from faults in materials or workmanship, if the unit is damaged, or if the product fails in function, do not disassemble, exchange, or modify any part of it, as there is risk of electric shock.

If malfunction cannot be remedied by following the troubleshooting tips, discontinue use and contact Oralucent Customer Care at customerservice@oralucent.com or 877-279-8781.

Exclusions:

Brush heads

- Damage due to improper use
- Defects that have a negligible effect on the value or operation of the appliance
- Damage due to unauthorized repair
- Normal wear and tear, including chips, scratches, abrasion, discoloration or fading
- Damage caused disassembling the product, damage caused by using an attachment not made by Oralucare, or damages caused by negligence.

Caution: Changes or modifications not expressly approved by Oralucare, Inc. could void the user's authority to operate the equipment.

To obtain service within the warranty period, contact Customer Care at customerservice@oralucent.com or 877-279-8781 for a Return Merchandise Authorization (RMA) number and return shipping address and instructions. Do not return to the address on the original packaging.

DISCLAIMER

This product is not intended to diagnose, cure or prevent any disease. Oralucare, Inc. makes no claims, representations or warranties regarding the ability of this product to cure any physical ailments. A qualified health professional should be consulted with regards to any condition requiring medical attention.

IMPORTANT NOTICES

The appliance is not to be used by persons with reduced physical, sensory or mental capabilities, or lack of experience and knowledge, unless they have been given supervision or instruction. Unsupervised children should not play with the appliance. This toothbrush is not intended for use by children under 12 years of age.

The product is a personal care device and is not intended for sharing among multiple users. Unlike this product and for its intended use as described in its user manual. Discontinue the use of product if it appears damaged in any way.

Consult your dental professional before using the product if:

- You have had oral surgery within the last 60 days.
- You are currently receiving gum treatment or treatment for any oral condition.
- You are taking light sensitive medications such as antibiotics, acid or prosthesis-sensitizing medications or have sensitivity to light.
- If pregnant or nursing, before using any product containing peroxide, such as optional Oralucare O₂ Gel.
- You have medical concerns.

WARNINGS AND SAFEGUARDS

Do not

- Submerge the device or charging dock in water or use while in bath or shower.
- Position the device or charging dock in a wet area or where it is in danger of being submerged in water.
- Touch the USB port or plug with wet or damp hands.
- Attempt to open the device, repair or replace the battery. The device is not user serviceable.
- Once the device or charging base, do not attempt to use if unit has been accidentally dropped as it may have been damaged and subject to malfunctions. Use the charging dock if cord (plug) is damaged expose the charging cord to heated surfaces or heat sources.

This product contains a lithium-ion battery that must be disposed of properly according to local laws and regulations, and not in household waste. When the product reaches its end of life, check into your state and municipal disposal and recycling options.

Back

SPECIFICATION

- 1. Printing Color : K+Pantone 265C
- 2. Printing Method : Offset
- 3. Barcode Grade : NA
- 4. QR Code : NA

AW NO: AIWO210804A005



AUTHORIZATION		UNLESS OTHERWISE SPECIFIED	PROJECT : UVT
DRAWN:	<i>Alanyao</i>	- DIMENSIONS ARE IN MILLIMETERS	PART NAME : Manual for UVT Toothbrush
CHECKED:	<i>Serena Song</i>	- TOLERANCE REFERENCE TO SPI TOLERANCING STANDARD	ITEM CODE : PMA0739Z1901
DESIGN:			DRAWING NO.: WO-210804A-801
ENGINEERING:		ONLY CRITICAL AND REFERENCE DIMENSIONS ARE SHOWN ON THIS DRAWING. UNSPECIFIED GEOMETRY ACCORDING TO 3D MODEL (SEE 3D MODEL INFORMATION).	DRAWN : ALANYAO
MANU.ENG'G:			CHECKED : SERENA SONG
MARKETING:			DATE : 02-MAR-23

A4

SCALE: 1:1 SHEET: 2 OF 2

CONFIDENTIAL AND PROPRIETARY
 THESE DRAWINGS ARE OF CONFIDENTIAL AND PROPRIETARY NATURE AND ALL RIGHTS ARE EITHER OWNED BY OR LICENSED TO OR PERMITTED TO USE (RIGHTS) BY HAYCO MANUFACTURING LIMITED OR ITS ASSOCIATES OR AFFILIATES ("HAYCO"). UNLESS OTHERWISE YOU ARE THE LAWFUL OWNER OF THESE DRAWINGS, IF YOU RECEIVE SUCH DRAWINGS FOR THE PURPOSE OF EITHER QUOTATION OR MOLD MAKING, YOU UNDERTAKE NOT TO MISAPPROPRIATE ANY RIGHTS AND AGREE THAT ALL RIGHTS OF DRAWINGS OR PRODUCTS MADE FROM SUCH DRAWINGS (INCLUDING THEIR VARIATIONS) SHALL BE VESTED WITH HAYCO OR ITS ORIGINAL OWNERS. IF SUCH DRAWINGS OR PRODUCTS ARE SHOWN TO ANY THIRD PARTY, YOU MUST MAKE SUCH THIRD PARTY AWARE THAT SUCH DRAWINGS AND OR PRODUCTS ARE OF CONFIDENTIAL AND PROPRIETARY AND ARE SUBJECT TO CONFIDENTIALITY.