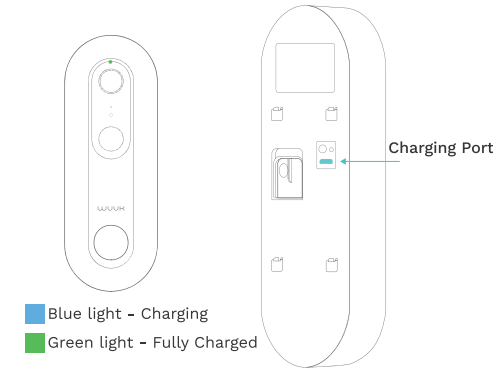


Fully Charge The WUUK Doorbell

First, fully charge the built-in battery in the WUUK Doorbell.

Plugging it into a power source using the provided charging cable that connects the doorbell from a Micro USB charging port at the back of the doorbell.



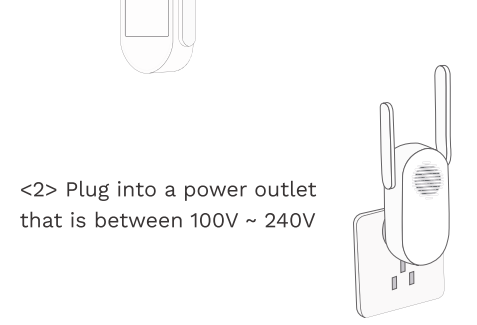
If you can't wait to play with your WUUK Doorbell, go ahead and set it up. But, we recommend fully charging it before first time use.

2

Quick Installation

1. Power Up Your Chime

<1> Link the power plug to the WUUK Chime



* If the power plug doesn't fit your country's power outlet standard, you will need a power plug adapter.

3

Choose The Way You Want to Install The Doorbell

Metals, glass and ceramics, plastics and PVC

YES - 3M VHB Tape (P4-P8)

Fibered surfaces such as particleboard, wood and paints

Maybe - 3M VHB Tape
YES - Screw In (P4,P5,P6,P13)

Porous & uneven surfaces such as concrete, stone, limestone, brick

Maybe - 3M VHB Tape
YES - Screw In with anchors (P4,P5,P6,P13)

Gabion, rubber, leather, peel metope

NO - 3M VHB Tape
YES - Screw In
YES - Screw In with anchors

4

Better Prepare The Surface for Strong Bond

The surface must be dry. Remove heavy levels of dirt or oxide from metals or paints (e.g. galvanized steel).

For maximum bond strength, we recommend thoroughly cleaning the surface with a 50:50 mixture of isopropyl alcohol and water.

Ideal tape application is accomplished when temperature is between 70°F and 100°F (21°C and 38°C).

Initial tape application to surfaces at temperatures below 50°F (10°C) is **not recommended**. If you are in a cold area, warm up the tape by using a hairdryer or other tools.

5

Porous Surfaces

Rough, porous or fibered materials such as wood, particleboard, cement, etc. have an open surface and require sealing to provide a unified surface for tape bonding. Common sealing materials would include paint, varnish or other hard surface coatings.

Abrasion Surfaces

For some surfaces, abrading using a Scotch-Brite Hand Pad or power palm sander with a fine grit will help prepare the surface for better adhesive bonding. Abrading a surface can serve several functions:

Smooth a surface to obtain more flatness, allowing improved contact area.
Create additional surface area that can increase adhesion.

6

About The 3M™ VHB™ Tape We Choose to Use on The WUUK Doorbell

VHB stands for Very High Bonding tape. 3M™ VHB™ tapes have been used extensively throughout manufacturing industries since the 1980s. The viscous liquid properties help the adhesive within the VHB tape flows into every microscopic surface to provide a seal against environmental conditions and a high performance bond. In many situations, VHB tape can replace rivets, welds, screws and other forms of mechanical fasteners.

Reasons why WUUK Labs choose to apply 3M™ VHB™ tapes as a way of installation

Quick and simple to apply, and used without extensive specialized training. Superior long-term durability.

Cut costs and increase manufacturing efficiency.

Moisture resistance.

Survive extreme high temperatures.

Short term resistance: 200 °F (93 °C)

Long term resistance: 158 °F (70 °C)

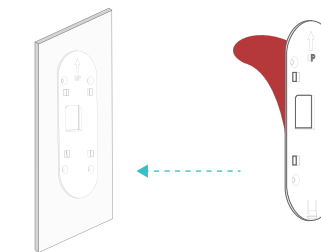
7

1 Minute Installation

<1> Peel off the red foil that has the 3M VHB texts on it, and attach the backplate to where you want to sit your doorbell.

<2> Press hard on the backplate for 5 seconds.

<3> Let it be there and dwell for at least 24hours so the 3M VHB tape can sink into the surface and build the strongest bond.



If you are applying the 1 Minute Installation, for final steps, go to P14.

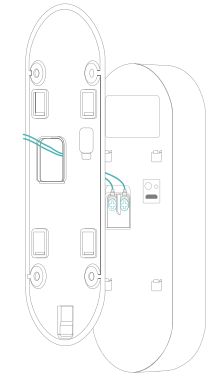
8

(If you choose to use the battery for power, please skip this page)

We highly recommend users who use the doorbell in cold weather area (-4°F / -20°C) to wire the device in order to keep the battery working properly.

(Optional) Hardwire the WUUK Doorbell for Power

Make sure the wires go through the backplate.

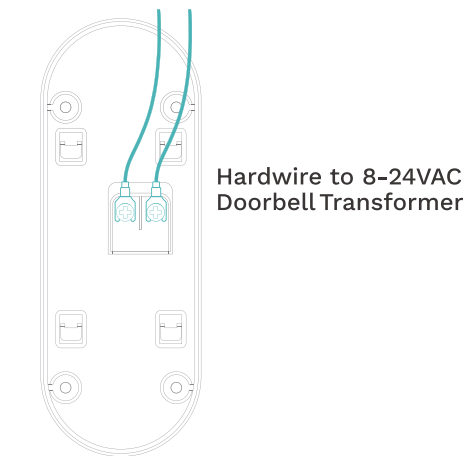


9

Connect The Wires

Connect the wires coming out of your wall to the screws on the back of your WUUK Doorbell.

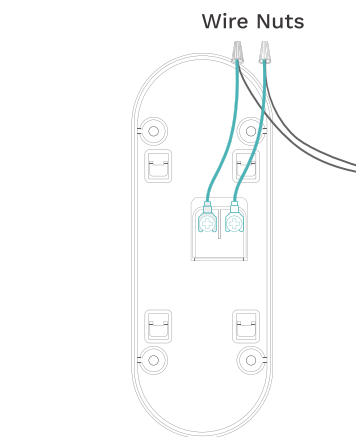
Either wire can connect to either screw. The order doesn't matter.



10

(Optional) Attach The Wire Extensions

If you have trouble connecting the wires coming out of your wall to the back of your WUUK Doorbell, use the provided wire extensions and wire nuts.



Feed all the wires, and the wire nuts, if you used them, into your wall.

11

If you're wiring your WUUK Doorbell to a digital doorbell - you'll know it's digital if it plays a synthesized melody - then install the included diode.



If your existing doorbell is mechanical, **DO NOT** use the diode, as it can damage your existing doorbell.

Not sure? Check wuuklabs.com/diode

12

(If you install the WUUK Doorbell on metals, glass and ceramics, plastics and PVC; Or choose to apply the 3M VHB tape as the installation method, please skip this page)

(Optional) Screw On

For installing on porous & uneven surfaces such as concrete, stone, limestone, brick; Or you choose to install this way.

Install anchors - on stucco, brick, or concrete

Mark 4 drill holes using the locating pad sticker. Use a bit to drill holes in your wall and insert the anchors.

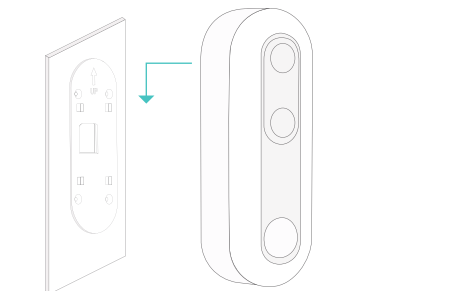
Screw it in - on particleboard, wood and paints

Secure your WUUK Doorbell backplate on the wall using four screws provided.

13

Power up the WUUK Doorbell, and hang the WUUK Doorbell onto the wall mount.

Match the four hooks on the back with the four locks on the backplate, and slide down. You will hear a slight clicking sound.

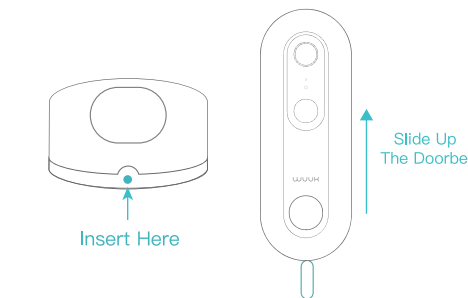


14

Charge The WUUK Doorbell

Before removing the doorbell, please make sure you turn off the Anti-theft Alert in the WUUK app.

Remove the WUUK Doorbell from the backplate for charging. Insert the releasing pin from the bottom of the doorbell, lift the pin handle a little bit, which helps to push the lock on the backplate to release, while slide up the doorbell.



Continue to set up your WUUK Doorbell in the app.

15

Having troubles?

support.wuuklabs.com
hello@wuuklabs.com

Connect with us and join the WUUK online community

www.facebook.com/WUUK-Labs/
twitter.com/DoorbellWuuk

This device complies with Part 15 of the FCC Rules. Operation is subject to the following two conditions: (1) This device may not cause harmful interference. (2) This device must accept any interference received, including interference that may cause undesired operation.

FCC Warning Statement Changes or modifications not expressly approved by the party responsible for compliance could void the user's authority to operate the equipment. This equipment has been tested and found to comply with the limits for a Class B digital device, pursuant to Part 15 of the FCC Rules. These limits are designed to provide reasonable protection against harmful interference in a residential installation. This equipment generates uses and can radiate radio frequency energy and, if not installed and used in accordance with the instructions, may cause harmful interference to radio communications. However, there is no guarantee that interference will not occur in a particular installation. If this equipment does cause harmful interference to radio or television reception, which can be determined by turning the equipment off and on, the user is encouraged to try to correct the interference by one or more of the following measures:
-- Reorient or relocate the receiving antenna.
-- Increase the separation between the equipment and receiver.
-- Connect the equipment into an outlet on a circuit different from that to which the receiver is connected.
-- Consult the dealer or an experienced radio/TV technician for help.
FCC Radiation Exposure Statement

The antennas used for this transmitter must be installed to provide a separation distance of at least 20 cm from all persons and must not be co-located for operating in conjunction with any other antenna or transmitter.

16

WUUK Smart Doorbell User Manual

Please read this manual carefully before using the product.

The WUUK app will walk you through setting up and managing your WUUK Doorbell. Search for "WUUK" in one of the app stores below, or visit: wuuklabs.com



Scan to download

Your WiFi password is required for the setup and usage. Make sure you have that by your hand.