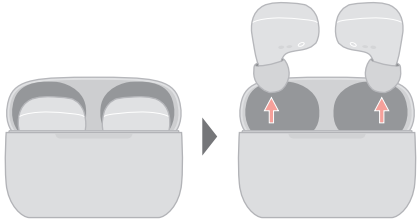


# User Manual

## How to pair

- 1 Take out your earbuds from the cradle

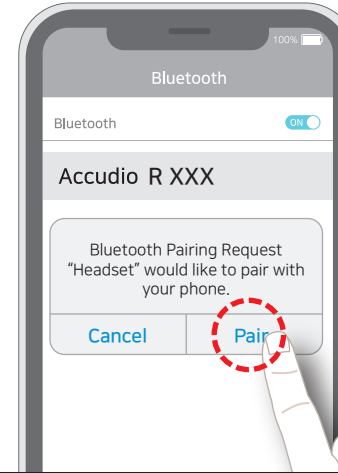


- 2 Go to your Bluetooth setting and click the ACCUDIO R XXXX or ACCUDIO L XXXX



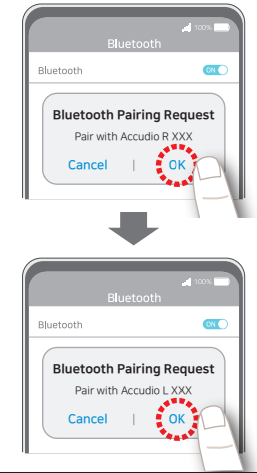
- 3 for iOS

You will see the Bluetooth Pairing Request on your Bluetooth setting screen and click 'Pair'



## for Android

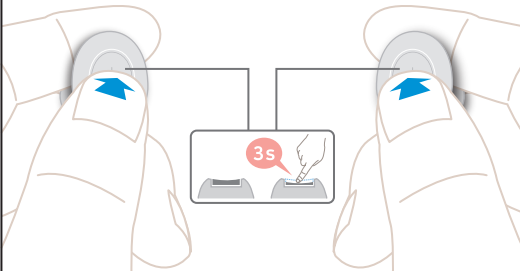
You will see the Bluetooth Pairing Request on your Bluetooth setting screen and click 'OK'



- 4 Manual pair mode

Use manual pairing mode when the earbuds fail to enter pairing mode automatically or when you need to pair the earbuds with a new device

Click and hold the button of your earbuds for 3 seconds

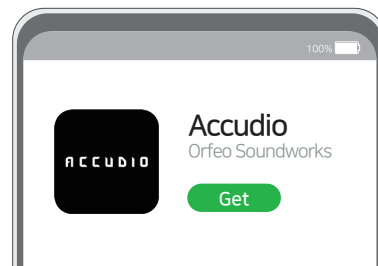


## Install Accudio App

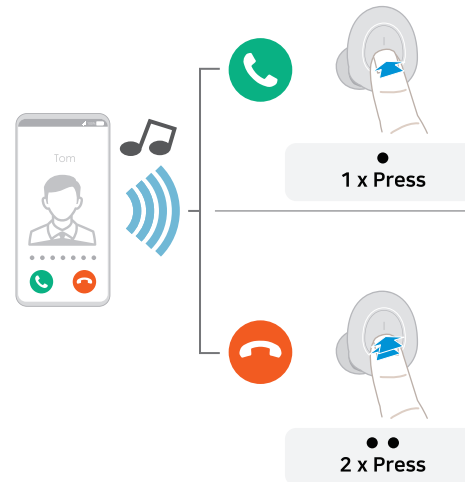
Install 'ACCUDIO' on your IOS or Android Phone



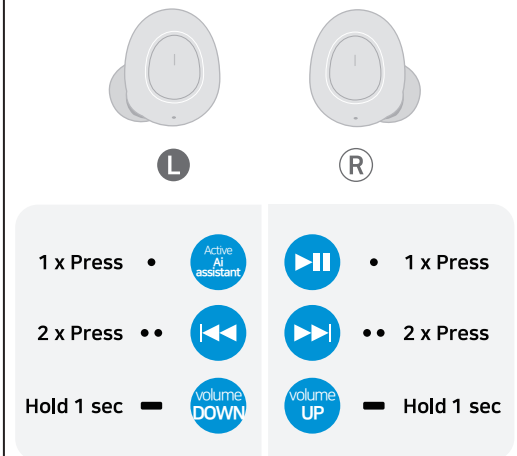
1. Type 'ACCUDIO' in Search
2. Click 'Get' or 'Install'
3. Download the App



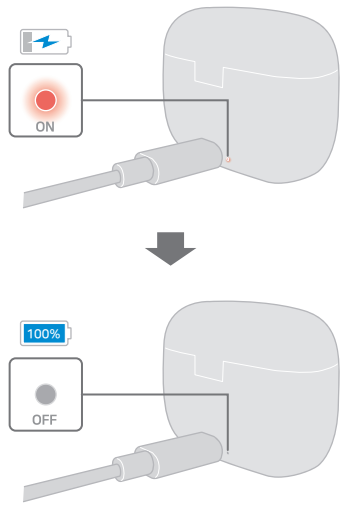
## Phone Call



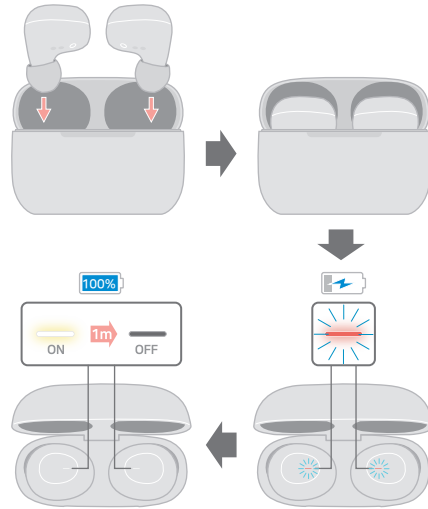
## Controlling Button



## Charging Cradle



## Charging Earbuds



### For customers in the USA

#### FCC Notice

#### Warning

This device complies with Part 15 of the FCC Rules. Operation is subject to the following two conditions: (1) This device may not cause harmful interference, and (2) this device must accept any interference received, including interference that may cause undesired operation.

#### Caution

You are cautioned that any changes or modifications not expressly approved in this manual could void your authority to operate this equipment.

※ The equipment complies with RF radiation exposure limits set forth for an uncontrolled environment.

※ This device and its antenna must not be co-located or operation in conjunction with any other antenna or transmitter.

FCC ID : 2AWHT-ACCUIDBUTTON