

无线充笔筒支架

CCH1



- 铝合金外壳
- 工作温度
-10°C-60°C
- 工作湿度
10%-90%
- 太空银
- 磨砂黑

使用说明：



拉升最高拉杆与水平斜角70°时
最大承受重量：350克

- 1、支架拉杆垂直拉升最高：168.5mm 最低：113.5mm
- 2、产品净重量：368克
- 3、拉升最高拉杆与水平斜角70°时最大承受重量：350克
- 4、支持横、竖屏无线充电，支持QC、PD协议无线充电，支持最新的三星快充无线规格，支持快充无线需要连接在快充的电源上并采用标准USB数据线，非快充手机工作在Qi 5W模式



- 铝合金外壳
- 工作温度
-10°C-60°C
- 工作湿度
10%-90%

产品参数

产品名称: 无线充笔筒支架	产品型号	CCH1
输入电压: 5-12V	输出电压	4.5-12V
输入最大电流: 5V/2A、9V/2A/12V/1.5A	输出最大电流	2.1A
	输出最大功率	18W

支持电源适配器：通用USB电源（可达最大7.5W），QC电源，PD电源
指示灯显示：上电：红灯交替闪烁，然后蓝光常亮，充电亮红灯，发现异物，蓝光闪烁报警。

CE RoHS Recycle Made in China

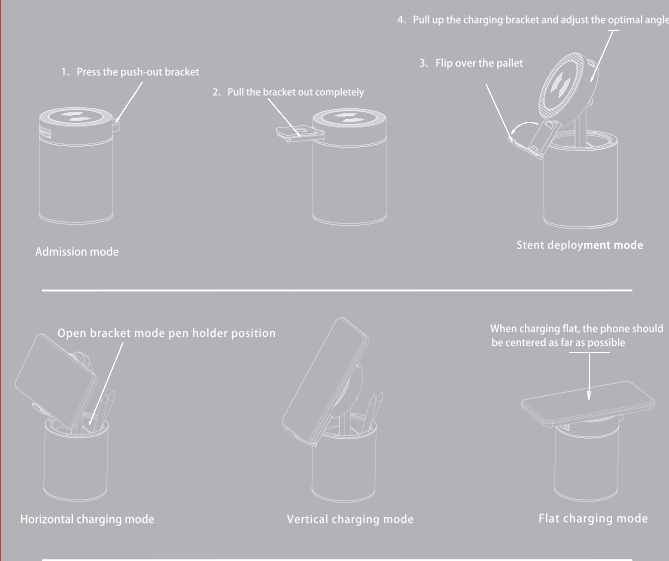
Wireless Pen holder holder

CCH1



- Aluminium Alloy casing
- Operating temperature
-10°C-60°C
- Working Humidity
10%-90%
- Space Silver
- Matte black

instructions:



Maximum load of 350g when the maximum tension bar is raised to 70°

1. The vertical lifting height of the support rod is 168.5 mm and the lowest is 113.5 mm
2. Net Weight: 368 grams
3. Maximum load of 350g when the maximum tension bar is raised to 70°
4. Support Horizontal and vertical screen wireless charging, support QC, PD protocol wireless charging, support the latest Samsung fast charging wireless charging specification, support fast charging wireless charging need to be connected to the fast charging power supply and use standard USB data cable, non-rechargeable phones work in Qi 5w mode



- 铝合金外壳
- 工作温度
-10°C-60°C
- 工作湿度
10%-90%

Product parameters

Product name	Wireless Pen holder holder	Product Model	CCH1
INPUT VOLTAGE	5-12V	Output Voltage	4.5-12V
Input maximum current	5V/2A/9V/2A/12V/1.5A	Maximum output current	2.1A
		Maximum power output	18W

SUPPORT POWER ADAPTER: UNIVERSAL USB power supply (up to 7.5 w), QC power supply, PD power supply
Indicator light shows: Power on: Red and blue light flashing alternately, then blue light is always on, charging bright red light, found foreign body, blue light flashing alarm.

CE RoHS Recycle Made in China

FCC Requirement

changes or modifications not expressly approved by the party responsible for compliance could void the user's authority to operate the equipment.

This device complies with Part 15 of the FCC Rules. Operation is subject to the following two conditions:

- (1) this device may not cause harmful interference, and
- (2) this device must accept any interference received, including interference that may cause undesired operation.

Note: This equipment has been tested and found to comply with the limits for a Class B digital device, pursuant to Part 15 of the FCC Rules. These limits are designed to provide reasonable protection against harmful interference in a residential installation. This equipment generates, uses, and can radiate radio frequency energy, and if not installed and used in accordance with the instructions, may cause harmful interference to radio communications. However, there is no guarantee that interference will not occur in a particular installation. If this equipment does cause harmful interference to radio or television reception, which can be determined by turning the equipment off and on, the user is encouraged to try to correct the interference by one or more of the following measures:

- Reorient or relocate the receiving antenna.
- Increase the separation between the equipment and receiver.
- Connect the equipment into an outlet on a circuit different from that to which the receiver is connected.
- Consult the dealer or an experienced radio/TV technician for help.