

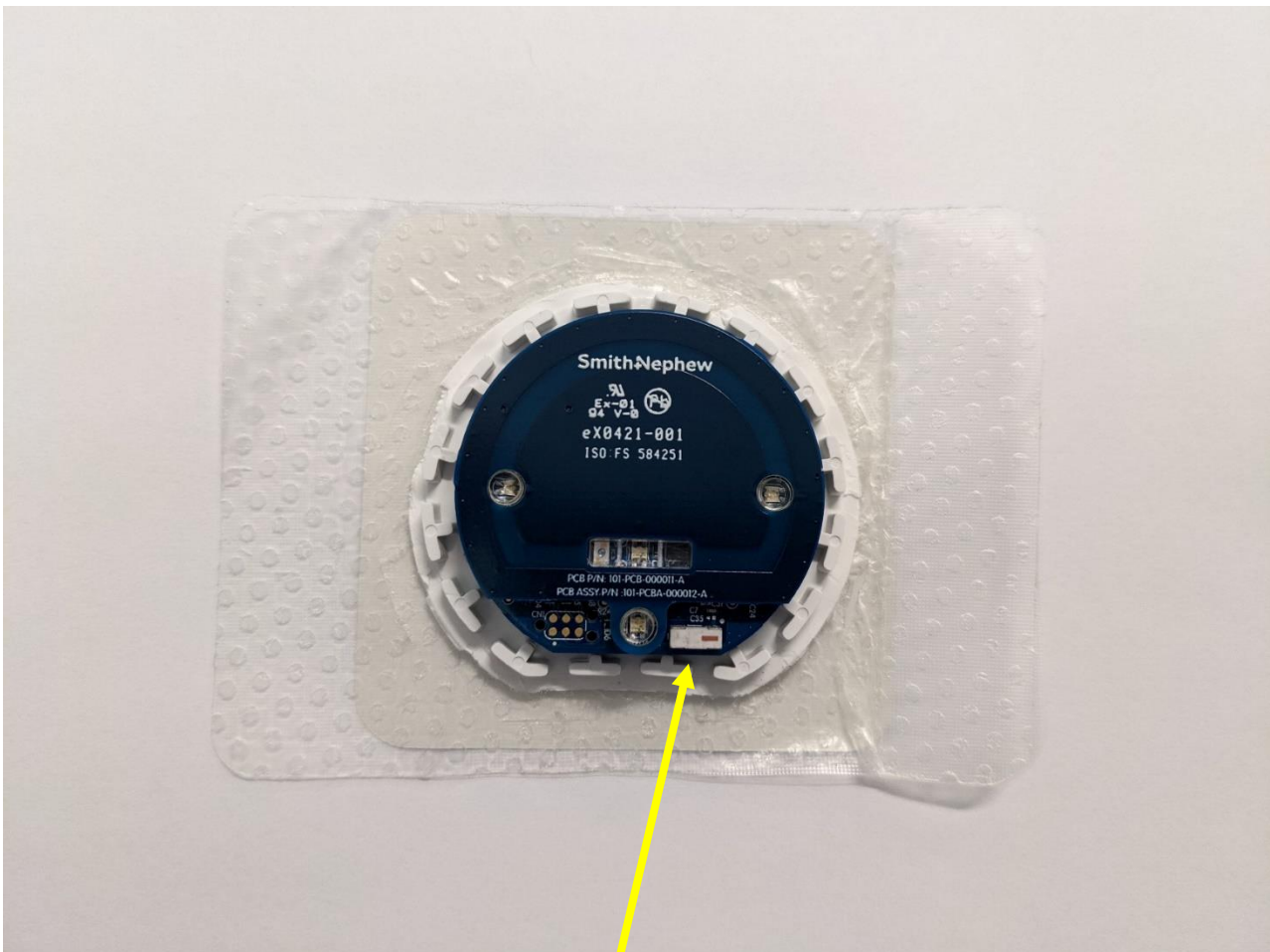
**Smith & Nephew Medical Limited**  
101 Hessle Road  
Hull  
HU3 2BN  
England

T: + 44 (0)1482 225181  
F: + 44 (0)1482 328326  
www.smith-nephew.com

## LEAF Internal Pictures

Applicant Name: Smith & Nephew Medical Limited  
Address: 101 Hessle Road, Hull HU3 2BN, United Kingdom.  
Product Name: LEAF Patient Sensor  
Model Numbers: 66803060  
FCC ID: 2AWH9-LEAFS

### Top cover enclosure removed. Three Printed Circuit Boards Assembly

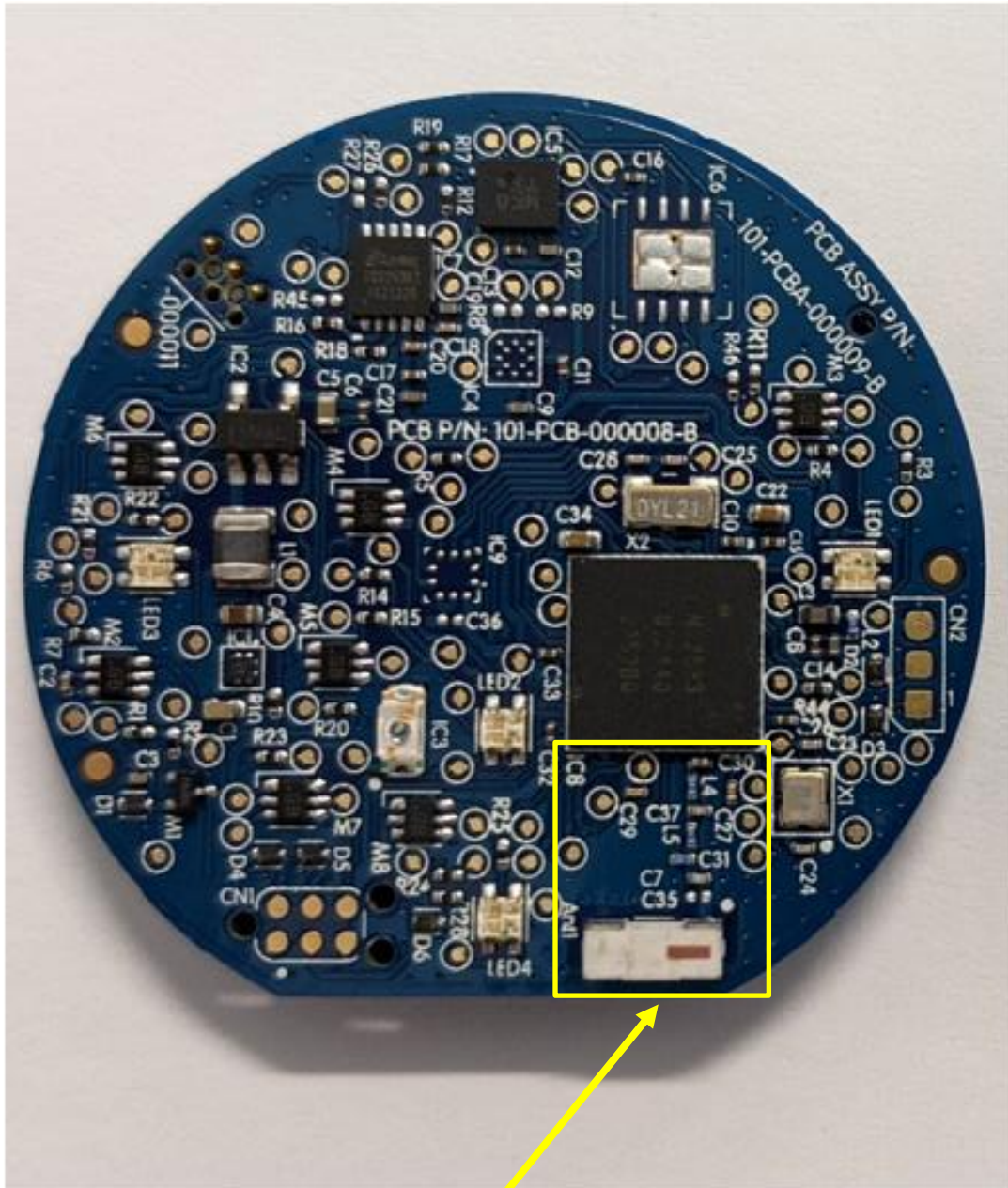


RF Antenna location

Smith & Nephew Medical Limited  
101 Hessle Road  
Hull  
HU3 2BN  
England

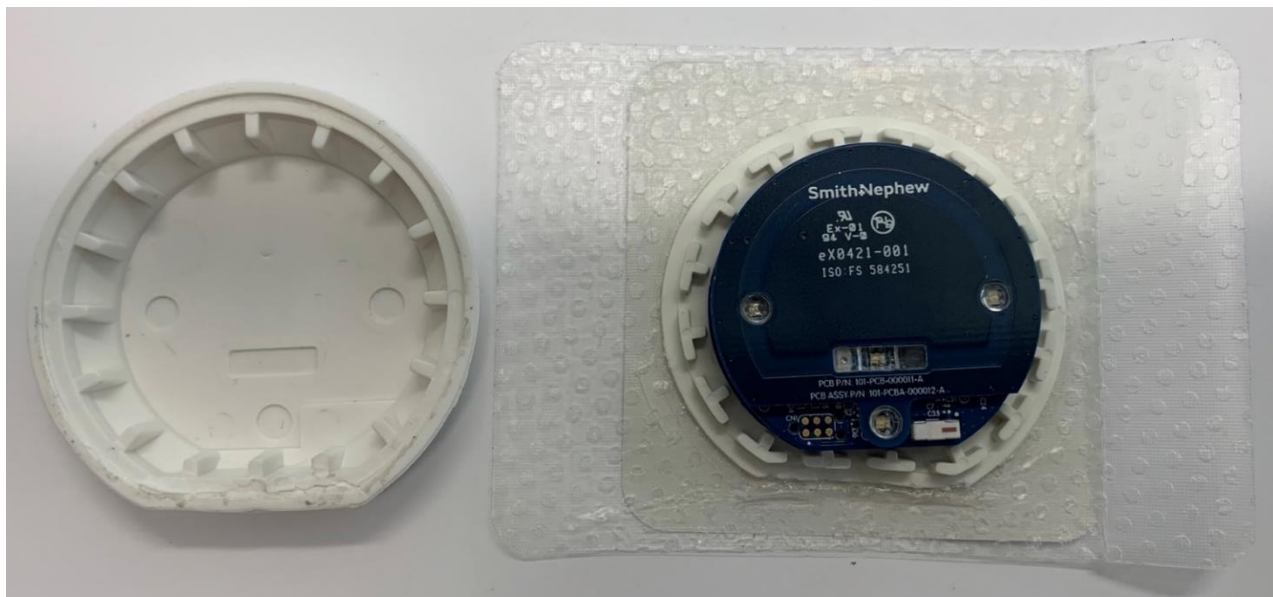
T: + 44 (0)1482 225181  
F: + 44 (0)1482 328326  
www.smith-nephew.com

### Location of the RF Section and Antenna on Main PCBA

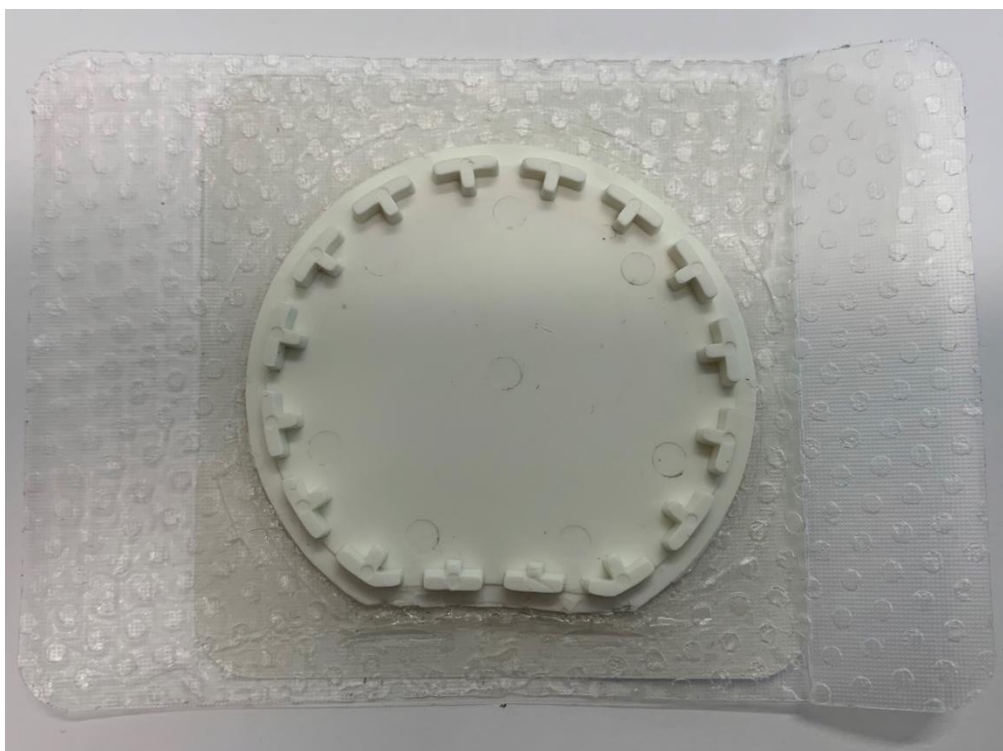


RF Section location including the RF Antenna (Ant 1)

**Housing opened, inside top housing and top PCBA stack**



**Housing opened, inside bottom housing**



**Smith & Nephew Medical Limited**  
101 Hessle Road  
Hull  
HU3 2BN  
England

T: + 44 (0)1482 225181  
F: + 44 (0)1482 328326  
www.smith-nephew.com

### Top View of the three Printed Circuit Boards Assembly



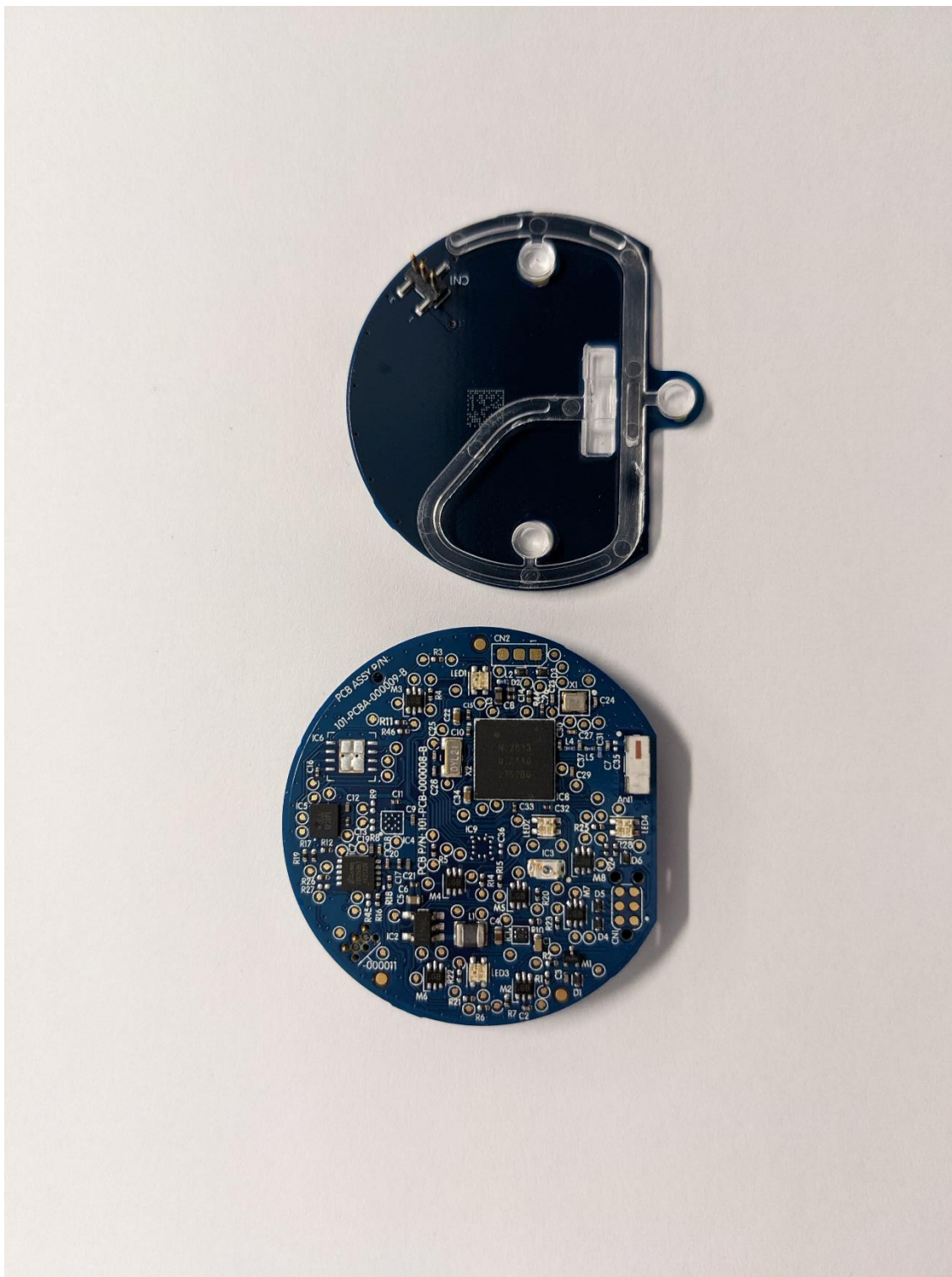
**Smith & Nephew Medical Limited**  
101 Hessle Road  
Hull  
HU3 2BN  
England

T: + 44 (0)1482 225181  
F: + 44 (0)1482 328326  
[www.smith-nephew.com](http://www.smith-nephew.com)

## **Bottom View of the three Printed Circuit Boards Assembly**



## Top View of the Printed Circuit Boards Assembly



Smith & Nephew Medical Limited  
101 Hessle Road  
Hull  
HU3 2BN  
England

T: + 44 (0)1482 225181  
F: + 44 (0)1482 328326  
www.smith-nephew.com

### Bottom View of the Printed Circuit Boards Assembly with Coin Cell



Smith & Nephew Medical Limited  
101 Hessle Road  
Hull  
HU3 2BN  
England

T: + 44 (0)1482 225181  
F: + 44 (0)1482 328326  
www.smith-nephew.com

**Bottom View of the Printed Circuit Board Assembly without Coin Cell**

