

自天然®經絡氣血共振儀

BMSmeridian Qi Resonance Device



BMS-H01 Instruction Manual

2020.4. v5

Bio Nature Scientific Co., Ltd.
自天然科技股份有限公司

自天然®經絡氣血共振儀

BMSmeridian Qi Resonance Device

Model: BMS-H01

(1) Precautions before Use

1-1. Product features	P4
1-2. Product contents	P5
1-3. Parts and functions	P6
1-4. Product specifications	P7

(2) Instructions for Use

2-1. Cable connection before use	P9
2-2. Button operations	P11
2-3. Storage after use	P13
2-4. Precautions for use	P15

(3) Troubleshooting and Contact Information

3-1. Maintenance and Storage	P17
3-2. Troubleshooting/Consultation	P19
3-3. Product Warranty	P21

Thank you for purchasing BMSmeridian Qi Resonance Device

Dear Customer:

Thank you for selecting this special traditional medicine meridian qi device. This device results from many people's hard work and determination, involving the filial piety of a child, the unconditional assistance of a lawyer, the lifetime efforts of a father, the promise of a physician, the exploration of a school superintendent, the unrelenting involvement of a professor, the persistence of a doctor, and the support of partners and their families. We hope you take good care of this device and use it often to safeguard the health of your family!

This device is wholly developed, designed, manufactured and assembled in Taiwan. It is passed Taiwan (R.O.C.) NCC and USA FCC electronic safety regulatory tests so that the customers can use this device with the peace of mind. The product has obtained invention patents in Taiwan, United States, and China. Its primary feature is the combination of the meridian resonance of the East and the micro-current neural transmission field of the West. Its benefits include meridian and circulation boost, the improvement of self healing capabilities, the facilitation of waste removal, and ultimately, health promotion.

For any questions regarding device use, feel free to contact us. For any questions regarding operation, we suggest you read this Instruction Manual carefully to clarify your questions.

Thank you again for your purchase, and we sincerely hope that this device can safeguard you and your family's health!

Bio Nature Scientific Co., Ltd.

(1) Precautions before Use

- 1-1. Product features
- 1-2. Product contents
- 1-3. Parts and functions
- 1-4. Product specification

Product features:

- (1) It detects physiological signals and generates meridian-resonating harmony waves, inducing meridian resonance with micro-current transmission field to boost qi and blood circulation.
- (2) This product is an internationally patented invention product, having obtained invention patents in Taiwan(R.O.C.), United States, and China.
- (3) This meridian resonance device boosts body energy, meridian patency and self-healing, and promotes personal health.
- (4) This product is easy to carry and operate, suitable for use at home and on-the-go.

Utilizing the meridian resonance technology to improve physical and mental health and balance

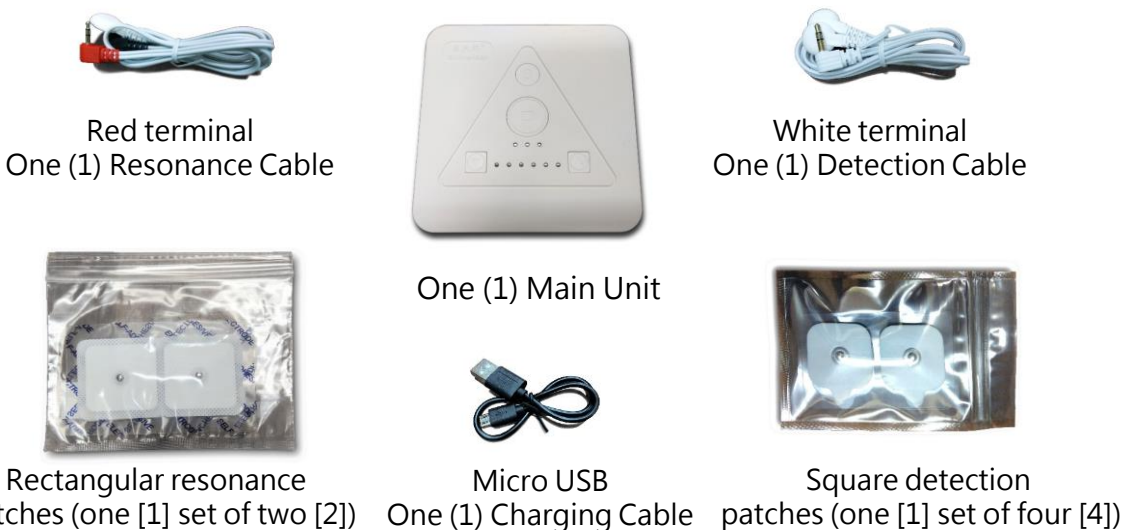


(1) Precautions before Use

- 1-1. Product features
- 1-2. Product contents
- 1-3. Parts and functions
- 1-4. Product specification

Package Content:

- (1) One (1) Main Unit
- (2) One (1) Meridian Resonance Cable and one (1) Meridian Detection Cable
- (3) One (1) set of Meridian Resonance Patches and one (1) set of Meridian Detection Patches
- (4) One (1) Micro USB charging cable
- (5) One (1) Instruction Manual



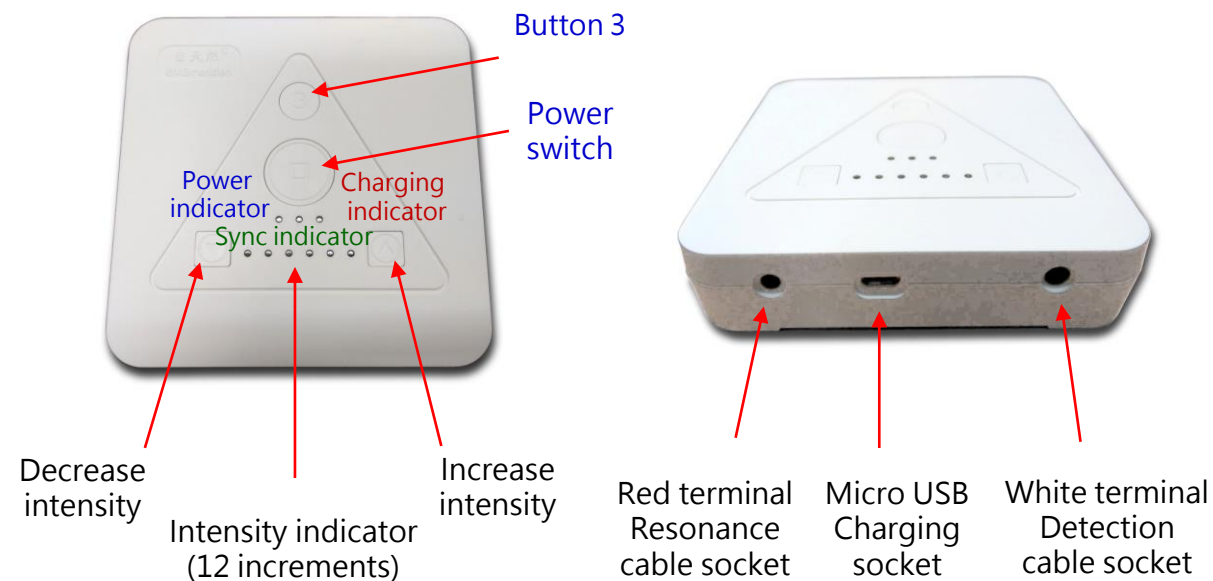
(1) Precautions before Use

- 1-1. Product features
- 1-2. Product contents
- 1-3. Parts and functions
- 1-4. Product specification

Functionality of Main Unit:

※ About buttons and indicators

※ About Main Unit sockets



(1) Precautions before Use

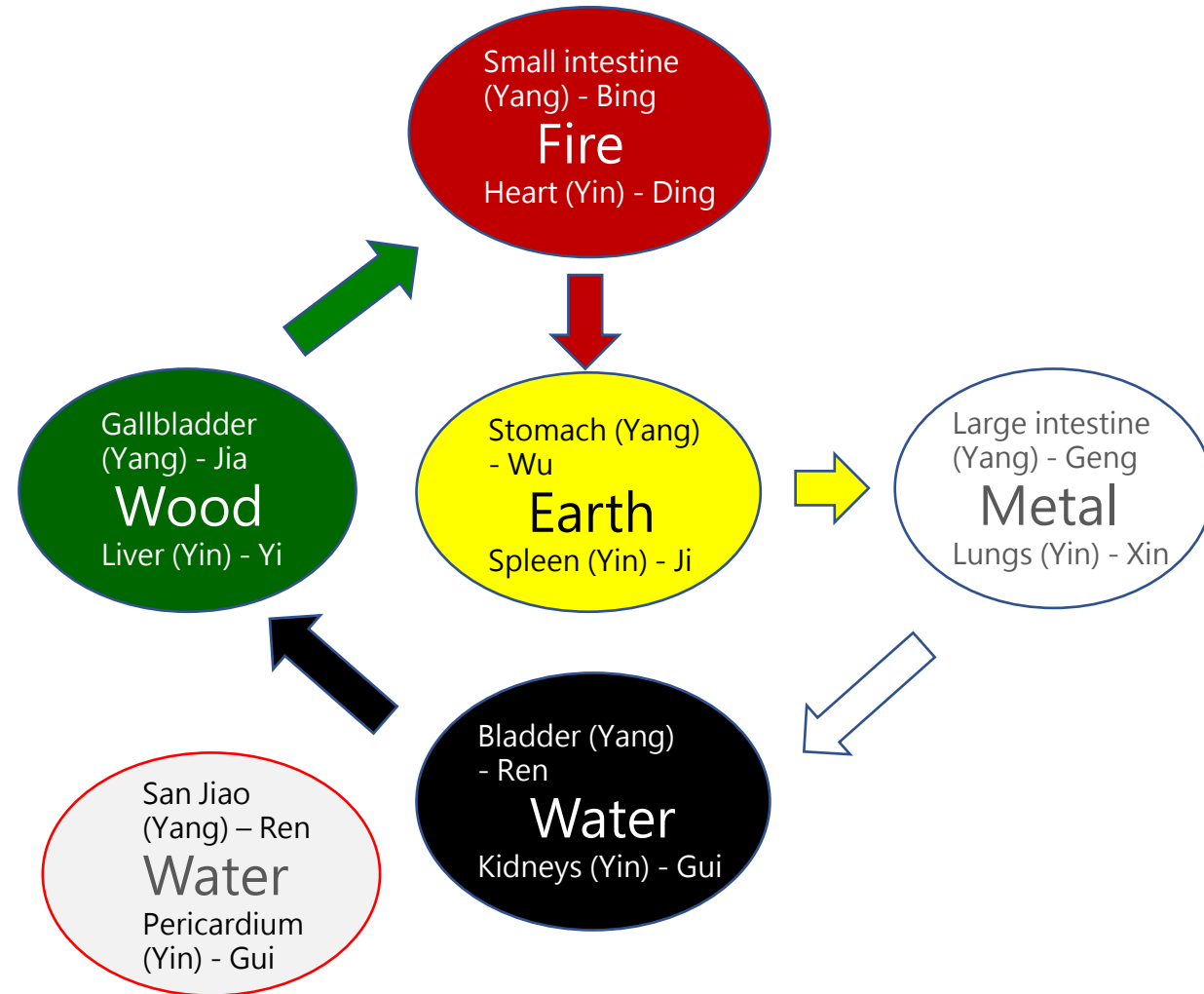
- 1-1. Product features
- 1-2. Product contents
- 1-3. Parts and functions
- 1-4. Product specification

Product specification:

Name	BMSmeridian Qi Resonance Device
Model:	BMS-H01
Dimension	10 x 10 x 2.3 cm
Weight	220g (including battery)
Power source	5V (micro USB)
Battery	Rechargeable lithium Ion battery
Current	40mA
Power consumption	< 5W
Resonance frequency	1 ~ 100Hz
Intensity adjustment	12 increments
Warranty period	One (1) year

(United States Patent No. US 10,004,663 B2)

Huangdi Neijing Five Element Organ Relationship
(with Tiangan [Heavenly Stem])

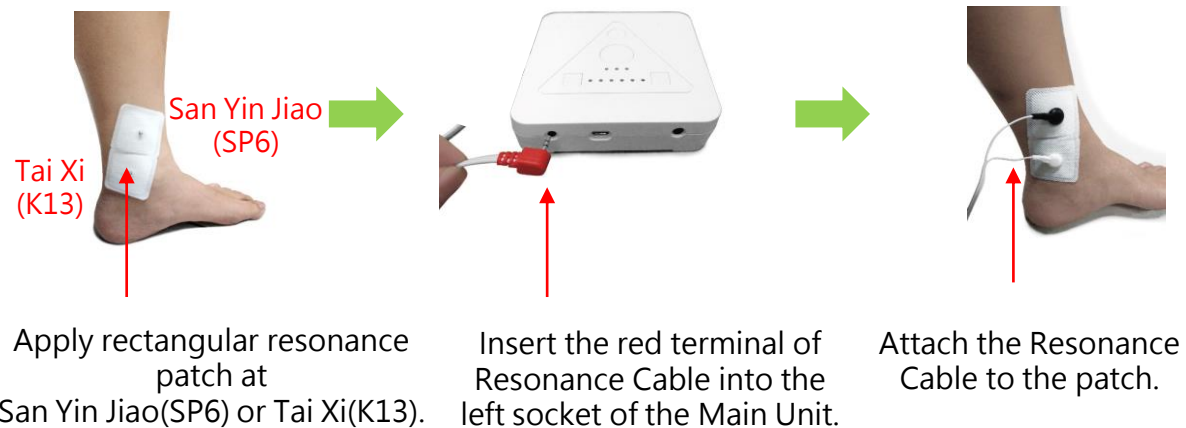


(2) Instructions for Use

- 2-1. Cable connection before use
- 2-2. Button operations
- 2-3. Storage after use
- 2-4. Precautions for use

Meridian Resonance Cable connection:

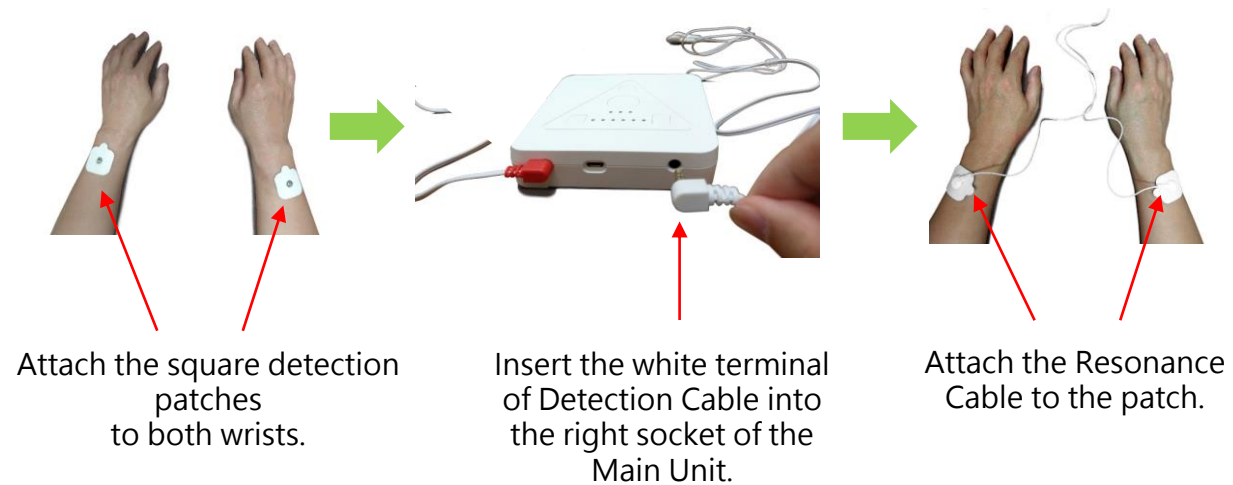
✂ It is suggested to use while resting in a comfortable posture. It can be used while sitting or lying, with eyes closed and gentle music playing in the background.



(2) Instructions for Use

- 2-1. Cable connection before use
- 2-2. Button operations
- 2-3. Storage after use
- 2-4. Precautions for use

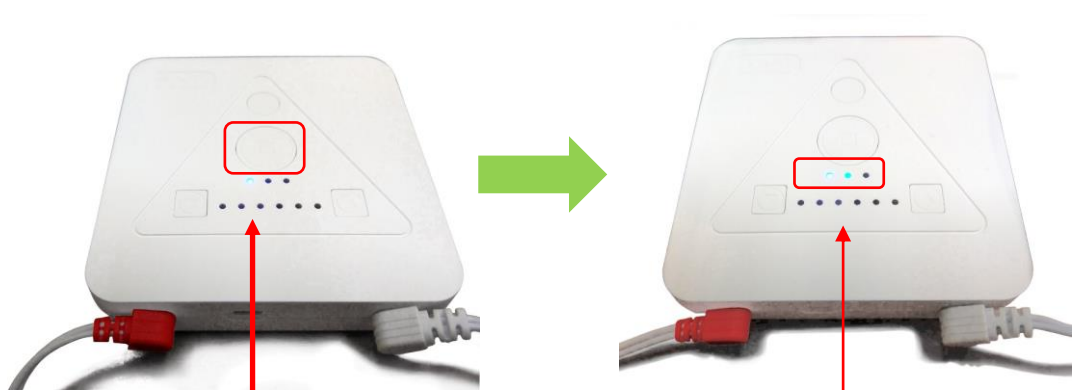
Meridian Detection Cable connection:



(2) Instructions for Use

- 2-1. Cable connection before use
- 2-2. **Button operations**
- 2-3. Storage after use
- 2-4. Precautions for use

Powering on and meridian detection:



Press and hold power switch for 3 seconds (release when the indicator lights up).
 (Count to three [3] seconds in your mind)
 - Blue power indicator at the left lights up.
 - Green indicator in the middle blinks means detection in progress.

Detection takes approximately 30~60 seconds.
 When the green indicator remains lit, the meridian resonance signal is detected.
 (Do not adjust intensity unless the green indicator remains lit)

(2) Instructions for Use

- 2-1. Cable connection before use
- 2-2. **Button operations**
- 2-3. Storage after use
- 2-4. Precautions for use

Meridian selection and resonance intensity adjustment:



Select "Button 3 resonance"
 (It is the default option and does not need pressing)

Depending on individual constitution, adjust resonance intensity by pressing the side buttons.
 (Start by gradually increasing the intensity, then reduce by one or two increments once tickling is felt, this device should be used comfortably and without tickling feeling)

※ Each session automatically ends in 20 minutes (Sync indicator blinks and resonance stops to detect meridian harmony wave every 5 minutes)

(2) Instructions for Use

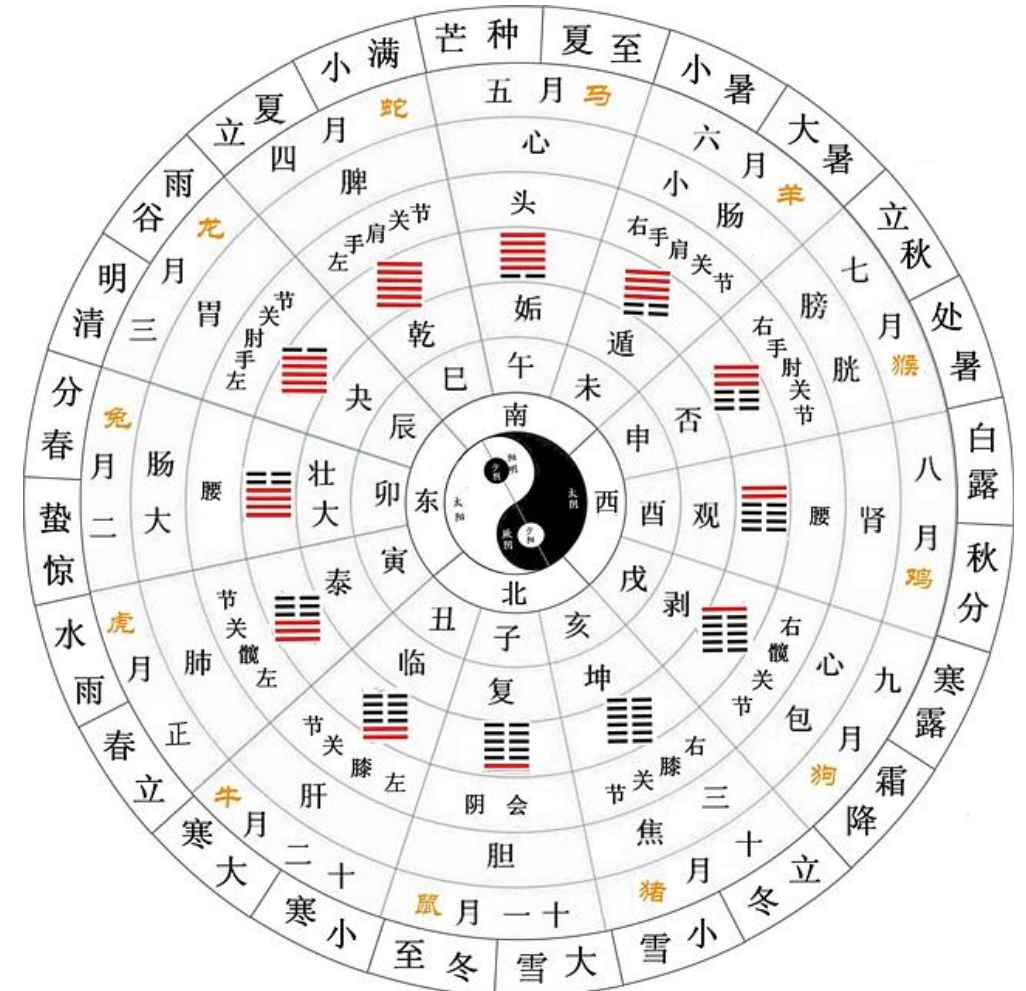
- 2-1. Cable connection before use
- 2-2. Button operations
- 2-3. Storage after use
- 2-4. Precautions for use

Storage:

- (1) Detach Resonance patches and Detection patches from cables.
- (2) Resonance Cable and Detection Cable can be left connected and kept at the sides to facilitate future use (see figure)



Huangdi Neijing Four Season Organ Sequence Chart
(with DiZhi [Barthly branch])



(2) Instructions for Use

- 2-1. Cable connection before use
- 2-2. Button operations
- 2-3. Storage after use
- 2-4. Precautions for use

Precautions for use:

- (1) Remove metal objects (for example, watch, mobile phone) from the body before using the device to ensure accurate detection of meridian harmony wave.
- (2) While in meridian detection, maintain a sitting (upright) or lying position. Do not talk, and close your eyes.
- (3) To use, press the power switch button for 3 seconds.
 - (a) Apply the resonance patches at correct positions (San Yin Jiao of Spleen Meridian and Tai Xi of Kidney Meridian).
 - (b) Adjust to the most appropriate intensity.
 - (c) In the 20-minute resonance adjustment time, the user may adopt abdominal breathing.
- (4) After each session, go to the bathroom often to eliminate body waste through urine.
- (5) In case a treatment pause is required, press power switch (ON/OFF) button to turn off the device.
- (6) The blinking red indicator at the middle right indicates low battery; when the red indicator becomes steady, the Main Unit requires charging immediately.
- (7) To facilitate meridian resonance, apply the resonance patches at acupuncture points as indicated.
- (8) Detection patches and resonance patches may detach when the adhesive loses effect and should be replaced.

(2) Instructions for Use

- 2-1. Cable connection before use
- 2-2. Button operations
- 2-3. Storage after use
- 2-4. Precautions for use

Safety Precautions:

- (1) This device is inoperable when charging, and does not respond when the power switch is pressed.
 - (2) Remove metal objects, such as watch, necklace, bracelet from your body to avoid heart signal disruption by static electricity.
 - (3) Stay rested while using the device and do not use devices such as mobile phone, PAD, notebook to avoid electromagnetic interference.
 - (4) Pacemaker users must not use this device.
 - (5) This device is not recommended for pregnant women, young children or severely ill patients, unless approved by a physician.
 - (6) When used by children, adult supervision is mandatory.
 - (7) When the resonance patch is attached, it is suggested to remove only after the session to avoid micro-current stimuli. When resonance cable is detached, it is recommended to reattach the cable and restart the session.
 - (8) Should dizziness or discomfort develop during the session, turn off by pressing the power switch, and rest in the original position.
- ※ This product is an electronic health promotion device but not a medical device. The product does not claim to have medical effects.

(3) Troubleshooting and Contact Information

3-1. Maintenance and Storage

3-2. Troubleshooting/Consultation

3-3. Product Certificate

Maintenance Method:

- (1) Maintain cleanliness at all times
- (2) Dirt on the Main Unit can be wiped off with dry soft cloth
- (3) Prevent water from getting into the Main Unit

Storage Method:

- (1) Do not expose to high temperatures and/or humidity, or direct sunlight
- (2) Do not store in an environment that is dusty or has corrosive gas
- (3) Do not store within the reach of young children

Bio Nature Scientific's health promotion gold standard

Bio Nature Scientific's health criteria:

- | | |
|--------------------------------------|-----------------------------------|
| 1) <i>Sleep well</i> | a) <i>Pink cheeks</i> |
| 2) <i>Good bowel movement</i> | b) <i>Good joint movement</i> |
| 3) <i>Decent appetite</i> | c) <i>Full of spirit</i> |
| 4) <i>Free from soreness or pain</i> | d) <i>Free from dark circles</i> |
| 5) <i>Extremities remain warm</i> | e) <i>Easy extremity movement</i> |
| 6) <i>Stable gait</i> | f) <i>Peaceful mind</i> |
| 7) <i>Stable mood</i> | g) <i>Satisfaction</i> |

Eliminates hazards *Facilitates benefits* *Restores balance*

(3) Troubleshooting and Contact Information

- 3-1. Maintenance and Storage
- 3-2. Troubleshooting/Consultation
- 3-3. Product Certificate

Troubleshooting:

Problem	Cause	Solution
Unable to turn on	Press only once	Press and hold the power switch for 3 seconds
Resonance patch is not responsive	No micro-current	1) Verify that the red terminal of Resonance Cable is connected to the Main Unit 2) Verify that the ring of Resonance Cable has been securely attached to the resonance patch 3) Verify that the resonance patch does not fall off from your leg
Patch detachment	Patch in poor adhesion	1) Clean the dirt on the patch with water, dry before use 2) Replace with a new patch
Stimuli being too intense	Resonance intensity too high	Adjust resonance intensity
Skin feels prickly	<ul style="list-style-type: none"> - There is wound on skin - The patch is not securely attached to skin - There is dirt on the rectangular resonance patch 	<ul style="list-style-type: none"> - Apply the patch on wound-free skin along Spleen Meridian - Securely attach to skin - Clean the resonance patch attach site or replace with a new patch
Unspecified issue,		Please contact the distributor directly.

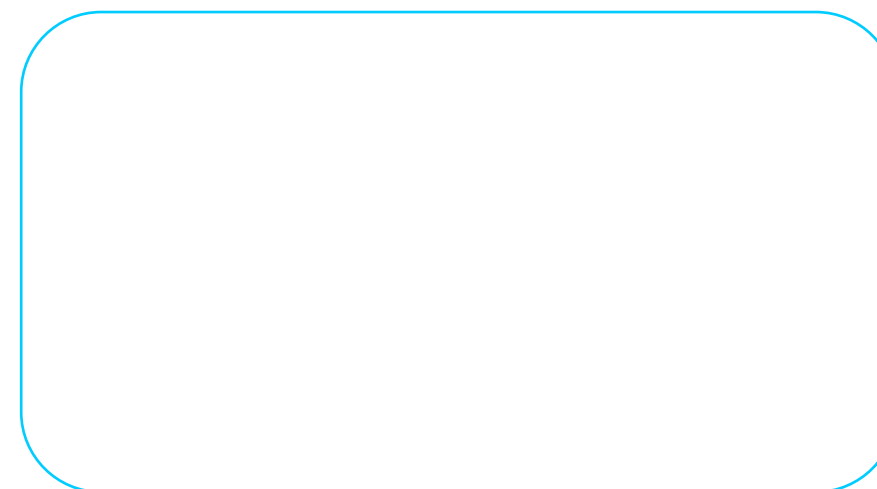
P19

(3) Troubleshooting and Contact Information

- 3-1. Maintenance and Storage
- 3-2. Troubleshooting/Consultation
- 3-3. Product Certificate

Consultation:

Authorized Distributor:



P20

(3) Troubleshooting and Contact Information

- 3-1. Maintenance and Storage
- 3-2. Troubleshooting/Consultation
- 3-3. Product Certificate

Product Warranty

The internationally patented BMSmeridian Qi Resonance Device BMS-H01 is designed, developed and manufactured by Bio Nature Scientific Co., Ltd. (a Taiwanese(R.O.C.) corporation), registered in Taiwan, the United States, and China. This product has a warranty period of one (1) year. For any questions, please contact the company or your distributor, and we will attend to your issue as soon as possible! Thank you!

Bio Nature Scientific Co., Ltd. Authorized Distributor



Product Shipment No. 2020.4 / 300 Distribution Date:

FCC

Federal Communications Commission (FCC) Statement

15.21

You are cautioned that changes or modifications not expressly approved by the part responsible for compliance could void the user's authority to operate the equipment.

15.105(b)

This equipment has been tested and found to comply with the limits for a Class B digital device, pursuant to part 15 of the FCC rules. These limits are designed to provide reasonable protection against harmful interference in a residential installation. This equipment generates, uses and can radiate radio frequency energy and, if not installed and used in accordance with the instructions, may cause harmful interference to radio communications. However, there is no guarantee that interference will not occur in a particular installation. If this equipment does cause harmful interference to radio or television reception, which can be determined by turning the equipment off and on, the user is encouraged to try to correct the interference by one or more of the following measures:

- Reorient or relocate the receiving antenna.
- Increase the separation between the equipment and receiver.
- Connect the equipment into an outlet on a circuit different from that to which the receiver is connected.
- Consult the dealer or an experienced radio/TV technician for help.

This device complies with Part 15 of the FCC Rules. Operation is subject to the following two conditions:

- 1) this device may not cause harmful interference and
- 2) this device must accept any interference received, including interference that may cause undesired operation of the device.

FCC RF Radiation Exposure Statement:

1. This Transmitter must not be co-located or operating in conjunction with any other antenna or transmitter.
2. For body worn operation, this device has been tested and meets FCC RF exposure guidelines. When used with an accessory that contains metal may not ensure compliance with FCC RF exposure guidelines.