

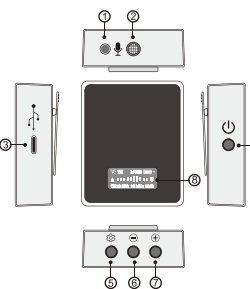
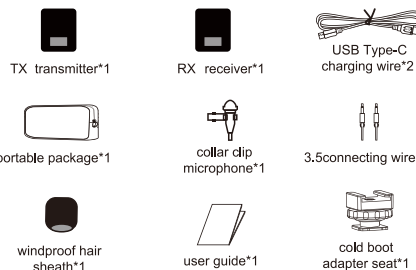


### Important tips

- \* Do not place the product in a place with high temperature or high humidity.
- \* The product may be hot in use, which is normal.
- \* Warning: do not place this product in a place where there are corrosive chemicals so as to avoid being corroded and damaged.
- \* There are precise electronic circuits in this product, for any maintenance, please contact authorized maintenance personnel, and the product failure due to the unauthorized disassembly is not within the scope of the warranty of this company.
- \* This user guide is prepared on the basis of this company's rigorous test, and the design and specifications are subject to change without further notice.

### List of items

The following items are included in the package.

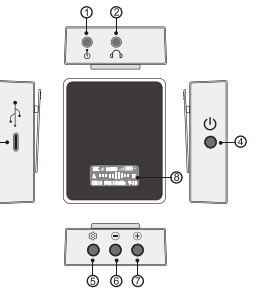


### TX transmitter

1. Built-in microphone
2. External microphone socket
3. USB Type-C charging interface
4. Power on/off key: press it 2s for start-up/shut down; lightly press it once to activate/deactivate the mute
5. Setting key: adjust the parameters
6. Sensitivity dB Number decrease key
7. Sensitivity dB Number increase key
8. OLED screen

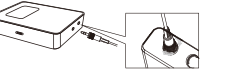
### RX receiver

1. Headphone output socket: can be connected to the headphone for real-time monitoring
2. Recording output socket: connected to the recording device with the audio connecting wire
3. USB Type-C charging interface
4. Power on/off key: press it 2s for start-up/shut down; lightly press it once to activate/deactivate the mute
5. Setting key: adjust the parameters
6. Volume decrease key
7. Volume increase key
8. OLED screen

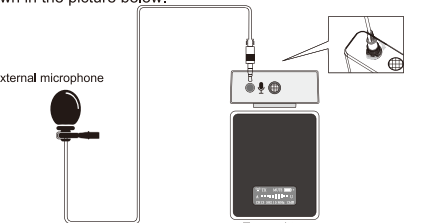


### 1. Installation of the transmitter

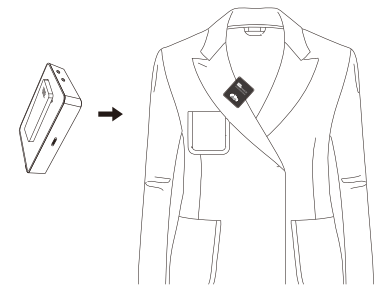
1. The transmitter can use built-in microphone or external microphone to record; the audio connecting wire can be directly used to connect the "3.5" socket of the receiver with "3.5" socket of the camera, or the audio input sockets of other devices, as the following figure shows:



2. Insert the plug of the external microphone into the " " socket of the transmitter. Note that the insertion is in place, as shown in the picture below.

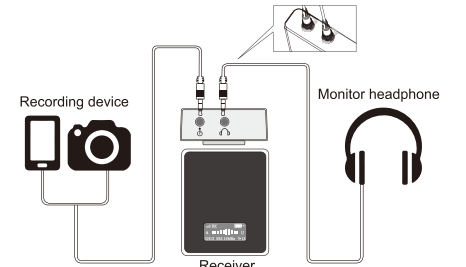


3. Clip the back of the transmitter onto your clothes.

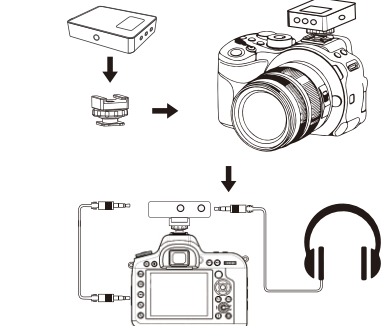


### 2. Installation of the receiver

1. Install the listening device and recording device according to the corresponding interface, as shown in the picture below.

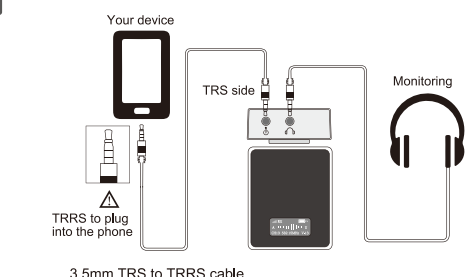


2. The receiver is installed on the camera for use, as shown in the picture below.



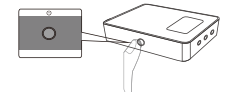
3.5mm TRS to TRS cable

3. The receiver is installed on the phone for use, as shown in the picture below.



### 3. Turn on the power

Press it 2s for start-up/shut down; lightly press it once to activate / deactivate the mute:



### 4. Setting

1. The function setting key is used to set the signal channel numbers of the transmitter and the receiver to the same. Signal channel numbers. Adjusting method: press " " SET setting key, when "CH\*\*\*" character flashes on the display screen (the same signal channel is also accordingly set for the receiver), the signal channel numbers can be adjusted by pressing the key, after the adjustment is completed, press the " " SET key again to quit and save the setting, or wait for 3s, automatically quit and save the setting.

For example: for A channel, the signal channel of the transmitter is set as CH01 and the signal channel of the receiver is set as CH01; the schematic diagram is as follows:



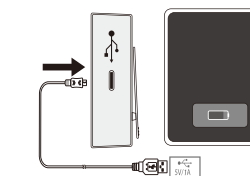
2. The dB sensitivity of the transmitter can be directly adjusted by pressing " " "+" keys, after the adjustment is completed, the satisfactory sound effect is obtained.

3. The monitoring volume of the receiver can be directly adjusted by pressing " " "+" keys, after the adjustment is completed, the satisfactory sound effect is obtained.



### 5. Charging

- \* When the battery capacity is low, it shows red, during charging, the lightning sign is shown and the charging grid runs slowly, after the battery capacity is full, the charging grid stop running.
- \* After using Type-C interface 5V 1A input, the microphone can work continuously.



No signal/ there is noise	Check the signal channel number of the transmitter shall be the same with that of the receiver. It may be interfered, please change the signal channels of the transmitter and the receiver. The distance is beyond the service range, please reduce the service distance; effective outdoor service distance is 70 meters, if there is shelter or for indoor use, the working distance will be decreased.
When speaking loudly	The microphone is a highly sensitive pick-up, please adjust the distance between the microphone and the sound source.
The sound is distorted. No sound/ very small	The output volume of the transmitter is too much, please adjust the sensitivity dB level. Check if the transmitter or the receiver is in mute state, if it is in mute state, "MUTE" is shown on the display screen and the power key can be pressed once to deactivate the mute. Check if the microphone plug of the transmitter or the output plug of the receiver is completely inserted into the socket. Check the setting of the volume parameter.
soundShort wireless service distance	The service distance may be affected because the transmitter and the receiver are blocked by the building. The transmitter and the receiver shall not be covered by the objects as far as possible in order to facilitate signal transmission. In a crowded environment, the human body may attenuate the radio waves so that the transmitter and the receiver shall not be blocked as far as possible. It may be interfered, please change the signal channels of the transmitter and the receiver.
Large wind noise	Check if the windproof cover of the microphone has been installed, and please adjust the sensitivity dB level.

Scope of acoustics and electrical equipment:	Analog audio system
Transmission type:	UHF
Signal to noise ratio:	>90dB
Pick-up mode:	omnidirectional
Service distance:	70M
Number of channels:	36
Frequency range:	570-606Mhz
Battery capacity:	600mah
Charging power:	5V/1A
Battery endurance:	TX about 6h RX about 4h
Display:	OLED screen
Weight:	70g
Dimension(mm):	55*46*15mm

### FCC Warning

This device complies with part 15 of the FCC rules. Operation is subject to the following two conditions: (1) this device may not cause harmful interference, and (2) this device must accept any interference received, including interference that may cause undesired operation.

Changes or modifications not expressly approved by the party responsible for compliance could void the user's authority to operate the equipment.

NOTE: This equipment has been tested and found to comply with the limits for a Class B digital device, pursuant to part 15 of the FCC Rules. These limits are designed to provide reasonable protection against harmful interference in a residential installation. This equipment generates uses and can radiate radio frequency energy and, if not installed and used in accordance with the instructions, may cause harmful interference to radio communications. However, there is no guarantee that interference will not occur in a particular installation. If this equipment does cause harmful interference to radio or television reception, which can be determined by turning the equipment off and on, the user is encouraged to try to correct the interference by one or more of the following measures:

- Reorient or relocate the receiving antenna.
- Increase the separation between the equipment and receiver.
- Connect the equipment into an outlet on a circuit different from that to which the receiver is connected.
- Consult the dealer or an experienced radio/TV technician for help.

### Radiation Exposure Statement

The device has been evaluated to meet general RF exposure requirement. The device can be used in portable exposure condition without restriction.

Neither software nor hardware can modify the description

Channel <sup>⌄</sup>	Frequency(MHz) <sup>⌄</sup>	Channel <sup>⌄</sup>	Frequency(MHz) <sup>⌄</sup>
01 <sup>⌄</sup>	570.15 <sup>⌄</sup>	19 <sup>⌄</sup>	588.15 <sup>⌄</sup>
02 <sup>⌄</sup>	571.15 <sup>⌄</sup>	20 <sup>⌄</sup>	589.15 <sup>⌄</sup>
03 <sup>⌄</sup>	572.15 <sup>⌄</sup>	21 <sup>⌄</sup>	590.15 <sup>⌄</sup>
04 <sup>⌄</sup>	573.15 <sup>⌄</sup>	22 <sup>⌄</sup>	591.15 <sup>⌄</sup>
05 <sup>⌄</sup>	574.15 <sup>⌄</sup>	23 <sup>⌄</sup>	592.15 <sup>⌄</sup>
06 <sup>⌄</sup>	575.15 <sup>⌄</sup>	24 <sup>⌄</sup>	593.15 <sup>⌄</sup>
07 <sup>⌄</sup>	576.15 <sup>⌄</sup>	25 <sup>⌄</sup>	594.15 <sup>⌄</sup>
08 <sup>⌄</sup>	577.15 <sup>⌄</sup>	26 <sup>⌄</sup>	595.15 <sup>⌄</sup>
09 <sup>⌄</sup>	578.15 <sup>⌄</sup>	27 <sup>⌄</sup>	596.15 <sup>⌄</sup>
10 <sup>⌄</sup>	579.15 <sup>⌄</sup>	28 <sup>⌄</sup>	597.15 <sup>⌄</sup>
11 <sup>⌄</sup>	580.15 <sup>⌄</sup>	29 <sup>⌄</sup>	598.15 <sup>⌄</sup>
12 <sup>⌄</sup>	581.15 <sup>⌄</sup>	30 <sup>⌄</sup>	599.15 <sup>⌄</sup>
13 <sup>⌄</sup>	582.15 <sup>⌄</sup>	31 <sup>⌄</sup>	600.15 <sup>⌄</sup>
14 <sup>⌄</sup>	583.15 <sup>⌄</sup>	32 <sup>⌄</sup>	601.15 <sup>⌄</sup>
15 <sup>⌄</sup>	584.15 <sup>⌄</sup>	33 <sup>⌄</sup>	602.15 <sup>⌄</sup>
16 <sup>⌄</sup>	585.15 <sup>⌄</sup>	34 <sup>⌄</sup>	603.15 <sup>⌄</sup>
17 <sup>⌄</sup>	586.15 <sup>⌄</sup>	35 <sup>⌄</sup>	604.15 <sup>⌄</sup>
18 <sup>⌄</sup>	587.15 <sup>⌄</sup>	36 <sup>⌄</sup>	605.15 <sup>⌄</sup>