



DIV ANT

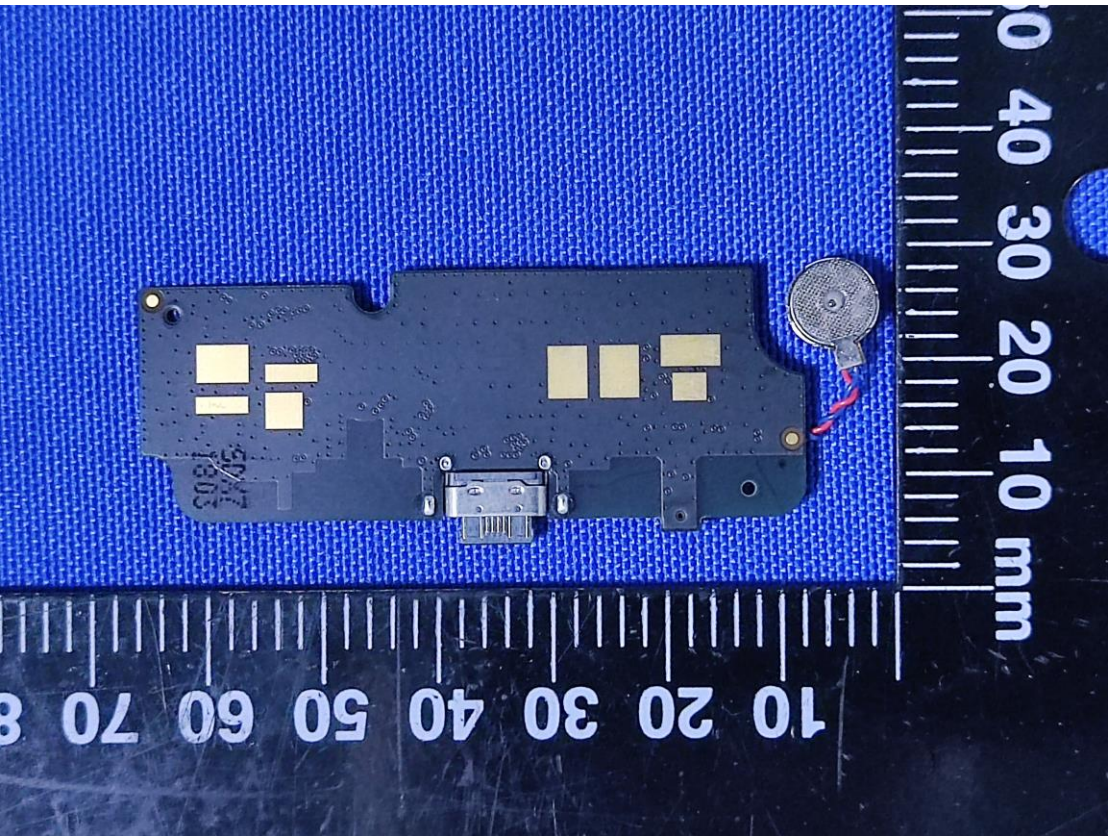
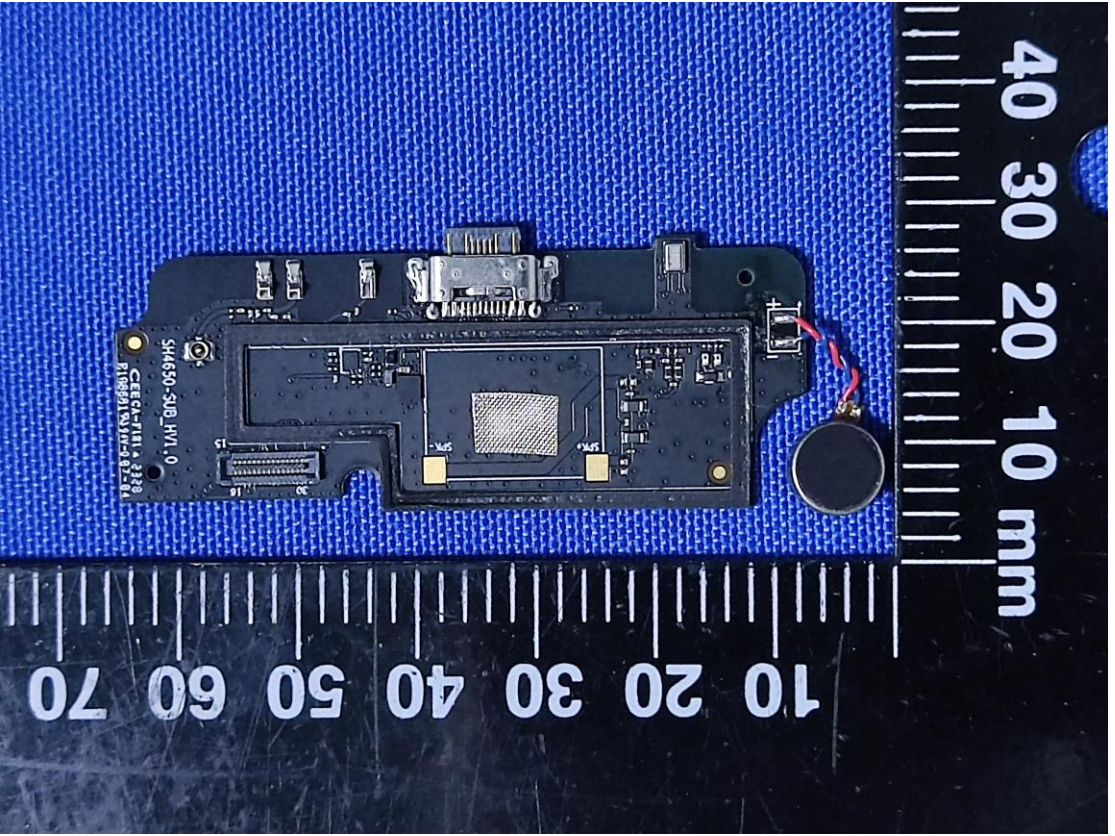
SH4650-DIV[1]-V11

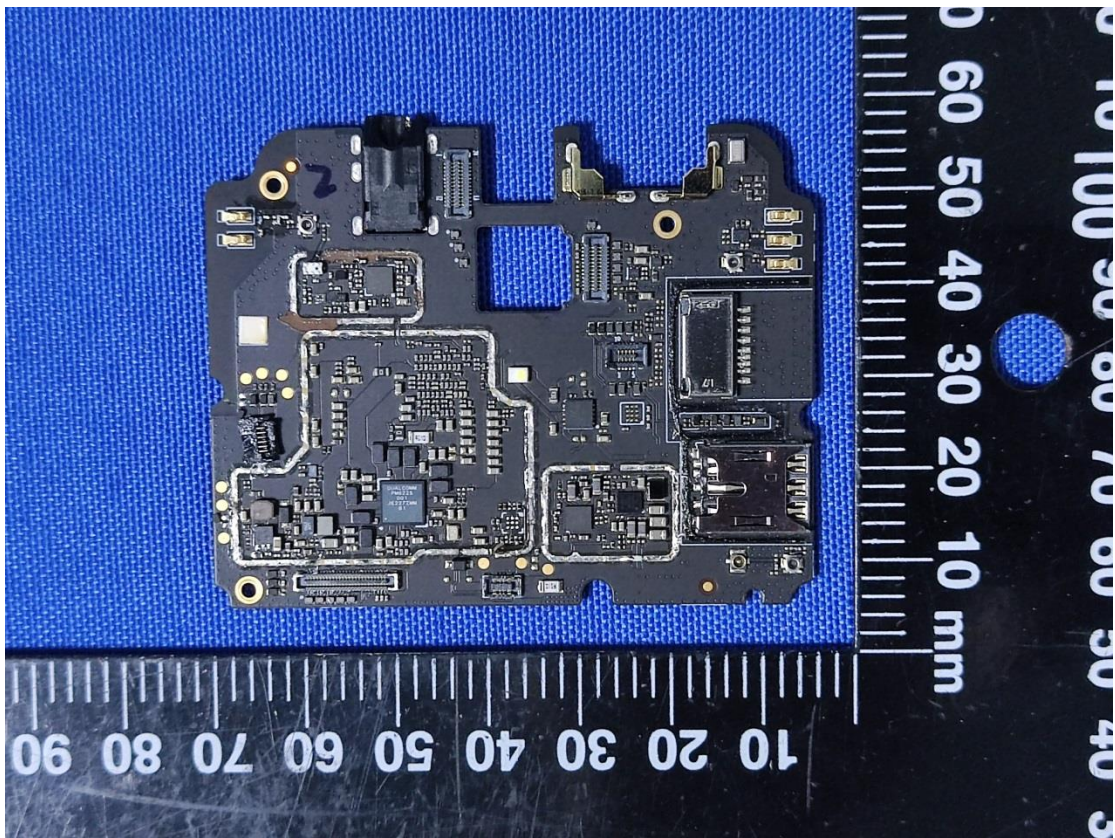
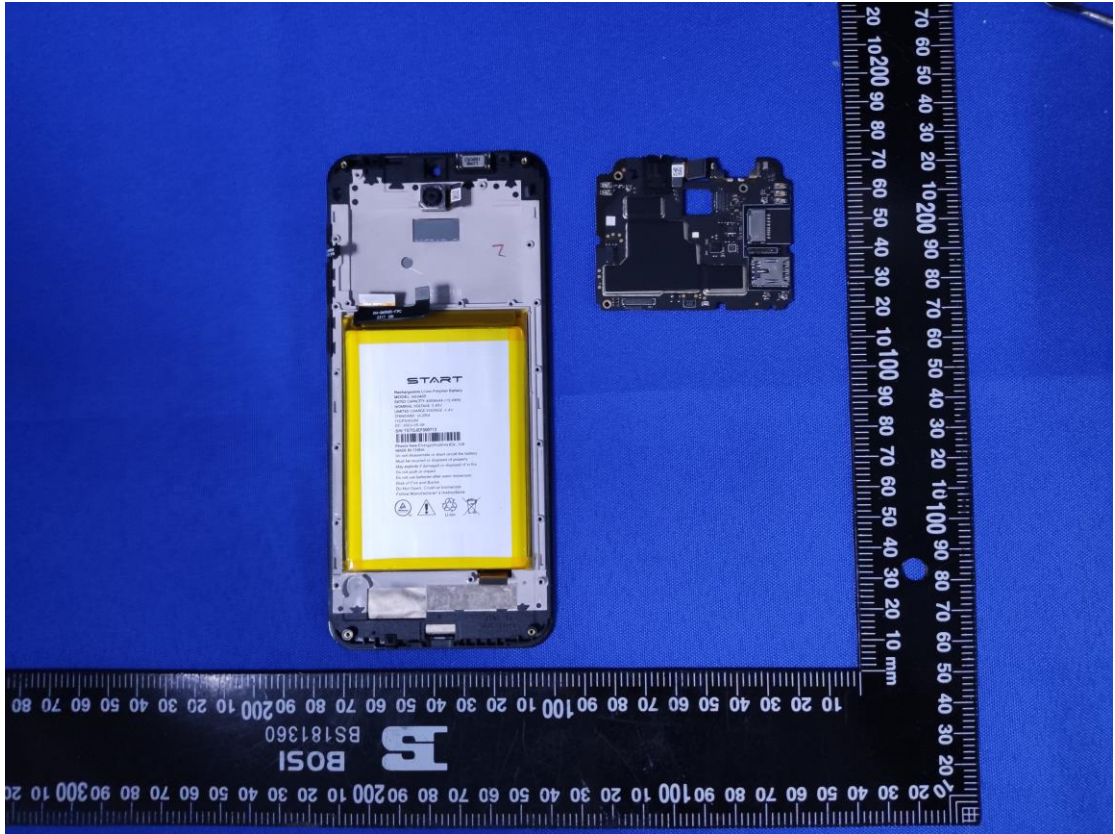


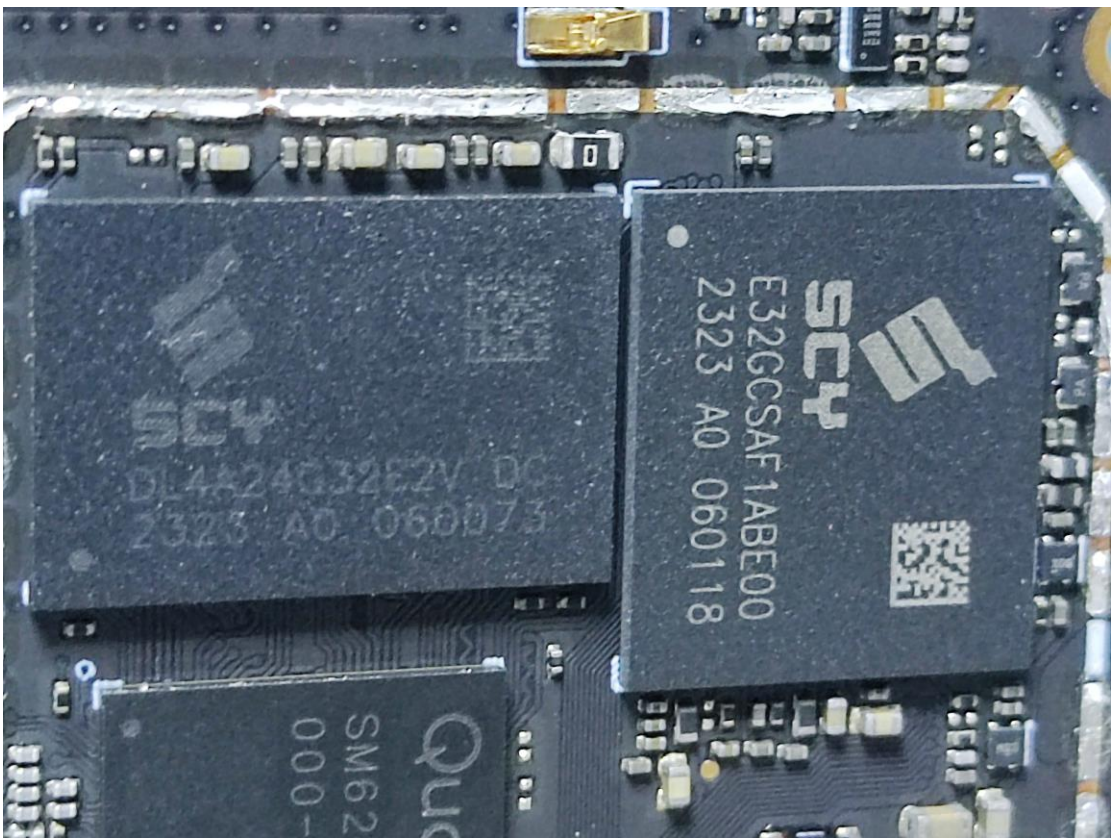
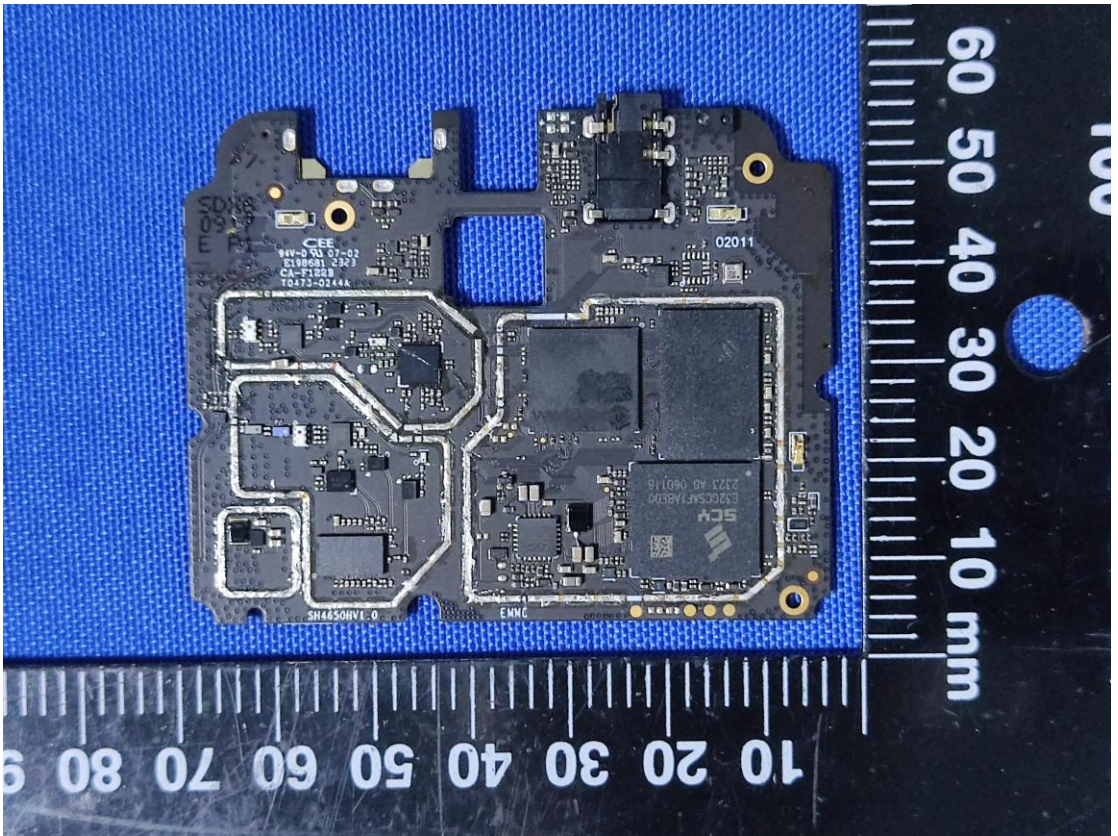
WIFI/BT ANT

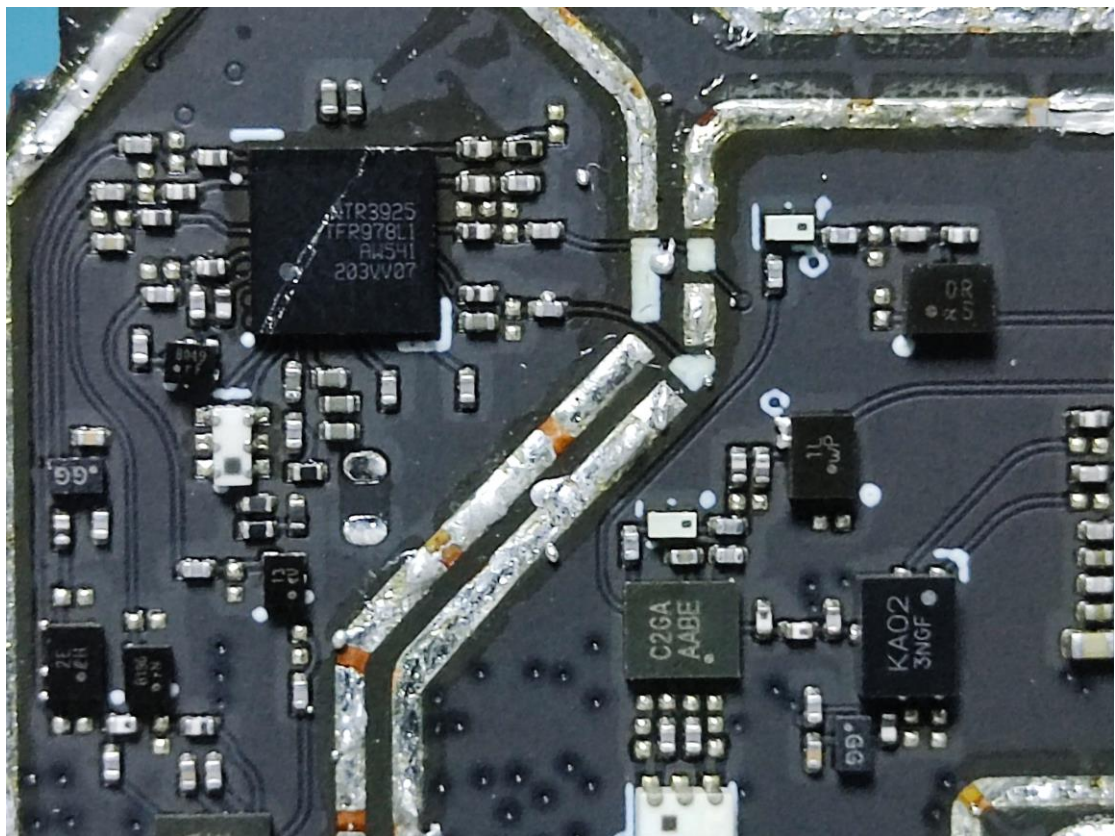
SH4650-GWB[1]-V11

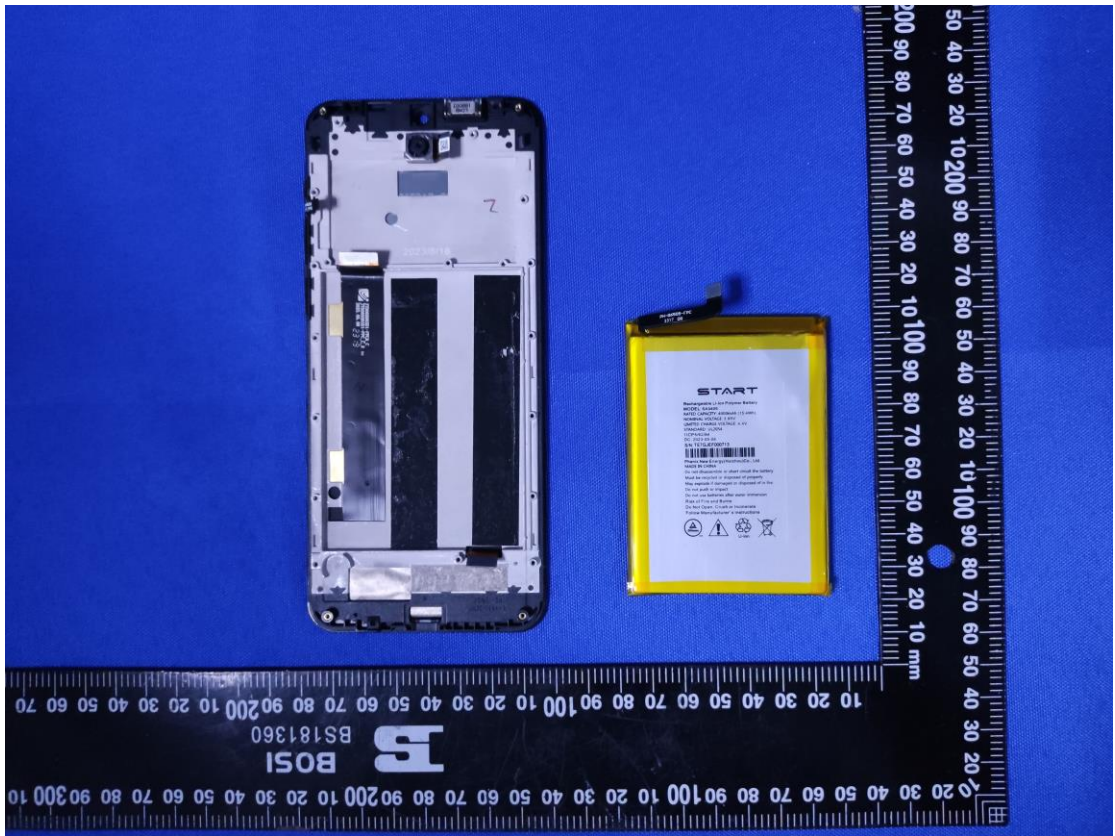
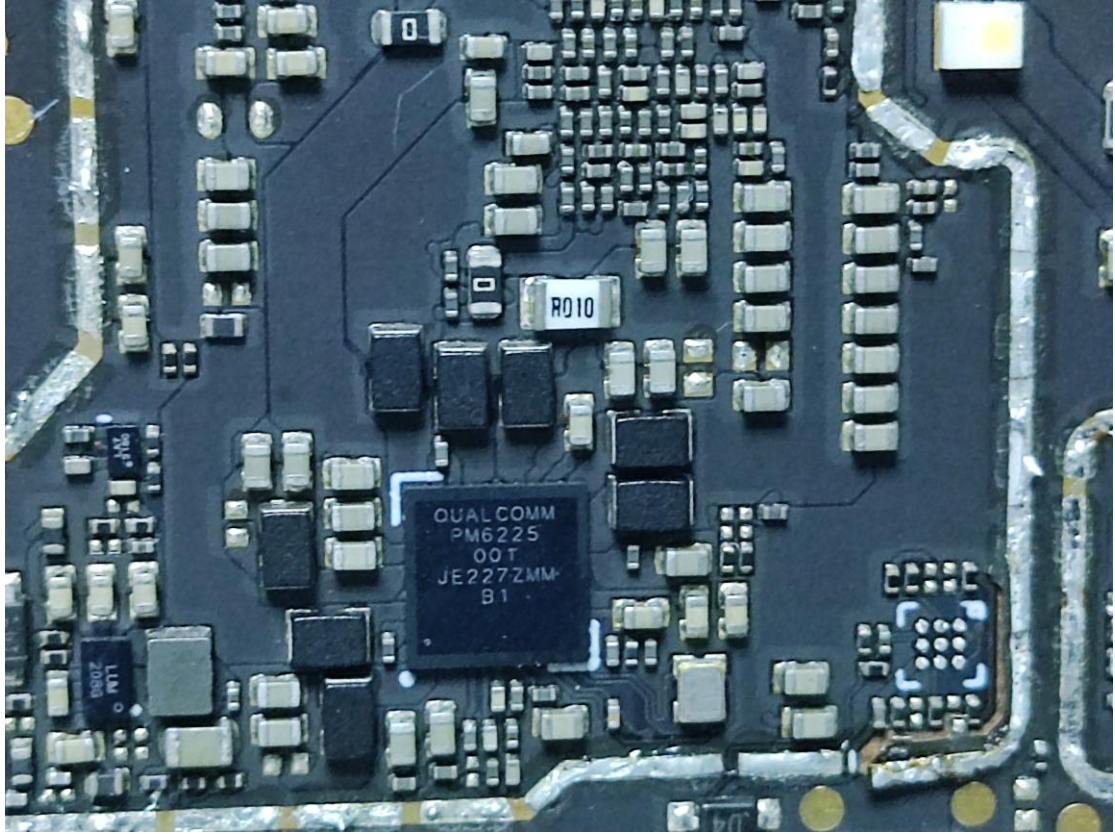














PH-66505-FFC
317_0P

START

Rechargeable Li-ion Polymer Battery
MODEL: SA3405
RATED CAPACITY: 4000mAh (15.4Wh)
NOMINAL VOLTAGE: 3.85V
LIMITED CHARGE VOLTAGE: 4.4V
STANDARD: UL2054
ICF: 962/84
DC: 2023-05-08
SN: TFCJCF000713

Phisic New Energy(Huizhou)Co., Ltd
MADE IN CHINA

- Do not disassemble or short circuit the battery
- Must be recycled or disposed of properly
- May explode if damaged or disposed of in fire
- Do not push or impact
- Do not use batteries after water immersion
- Risk of Fire and Burns
- Do Not Open, Crush or Incinerate
- Follow Manufacturer's instructions

