

# **INSTRUCTION MANUAL**

## ***23.6FT RGB Musical Synchronized Digital Tape Light***

Model No.:FPC-VI-5050RGB-23.6FT-24V

Adapter Rating:

Input 100-240V~50/60Hz, 0.7A

Output 24V 1000mA



**WARNING:** Your light chain is suitable for indoor use only. The transformer, remote, music control box and light chain connection must remain indoors at all times.



**WARNING:** The remote control contains a Lithium button cell battery, hazardous if swallowed. Carefully read the separate instructions related to battery.

# Please carefully read these instructions and retain for future reference.

## Adapter

- \* The Low Voltage adapter must be kept indoors at all times .
- \* Do not position the adapter where it may be exposed to dripping or splashed liquids or the chance of a liquid being spilt on it.
- \* Keep adapter and any 120 volt wiring at least 13ft distant from pools or spa's
- \* Adapter should not be placed near sources of heat such as heaters, fireplaces, candles etc.
- \* Ensure the adapter is installed in a place with adequate ventilation.
- \* Do not cover the adapter with cloth or any other soft furnishings.
- \* Adapter has no user serviceable parts, do not attempt to open the AC adaptor, if damaged discontinue use.
- \* Never handle the adapter with wet hands whilst it is fitted to a Power Point, Power Board etc.
- \* Always ensure that Power Points are switched off before inserting or removing the adaptor.
- \* If plugging in multiple sets use of a power board fitted with inbuilt overload protection is recommended.
- \* The adapter is an electrical device, it is not a toy. Do not let children handle the item.
- \* Turn power off when not in use or when not at home.

## Strip Light

- \* The LED's cannot be replaced, do not attempt to remove them from the strip light . Do not cut the strip light .
- \* Only use the Strip Light with the specified adaptor Model Number: RH-240-1000U4-1
- \* Do not expose the Strip Light to direct heat or flame, never submerge in water.
- \* Do not connect the Strip Light to any other electrical device.
- \* Never connect the Strip Light to the adaptor whilst it is in the box.
- \* Never cover the Strip Light with any fabric or other form of cover that will reduce air circulation around the Strip Light.
- \* Uncoil the Strip Light before connecting to adaptor and turning power on.

## Specification

### Strip Light

- \* PVC coated for moisture resistance
- \* 8 Static LED Color Adjustment
- \* 12 Preset Functions : Auto, Jump, Fade, Flash, Move Right, Move Left, Outward, Inward, Rainbow, White Outward Inward, Meteor, and Music synchronization.
- \* Adjustable Speed (+ /-) used in conjunction with Preset Functions button (Except Music)

### Adapter

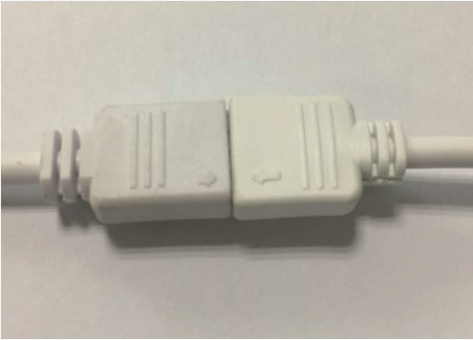
- \* Input 120V~50/60Hz, 0.8A
- \* Output 24V 1500mA 36W

PART	DESCRIPTION	QUANTITY
1	Strip Light	1pc
2	Controller Box with IR Receiver	1pc
3	Remote Control	1pc
4	Power Adapter	1pc
5	Lead Cable	1pc
6	Mounting Clips & Screws	Clips x 14pcs Screws x 14pcs
7	Double-sided tape	14pcs

# Installation

Your RGB Strip Light is intended for use as mood lighting under kitchen cabinets, benchtops, anywhere that a highlight is required.

o Remove contents from box and connect the White 4 pin connector on the end of the strip light to the White 4 inlet socket that is connected to the White music control box. To make sure the arrow mark side against another arrow mark side. (see below picture A)



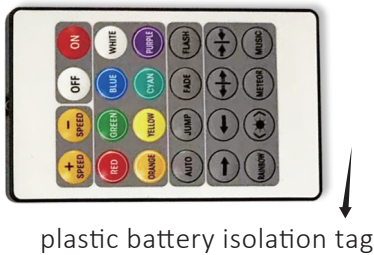
Picture A



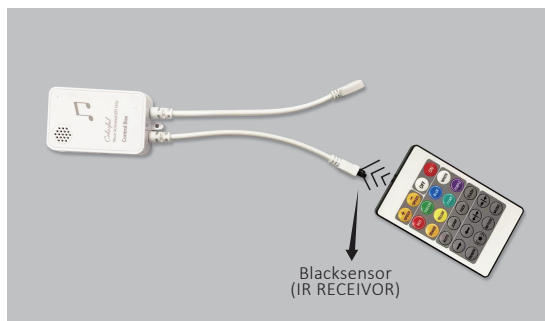
o Plug the bayonet fitting on the end of the lead wire into the socket on the end of the control box  
 o Plug adaptor into power and turn on. Peel off the backing paper and apply the adhesive side of the strip to the surface the Strip Light is to be adhered to.

# Remote Control Function

o Remove the plastic battery isolation tag from the remote control by pulling it out. (see below picture B)  
 o Point the remote control towards the Black sensor on the end of the short White lead on the White music box. (see below picture C). Do not have the sensor pointing directly towards strong sunlight.  
 o The remote control need to be in line of sight to a maximum of around 10ft from the Black sensor on the cable.



Picture B



Picture C

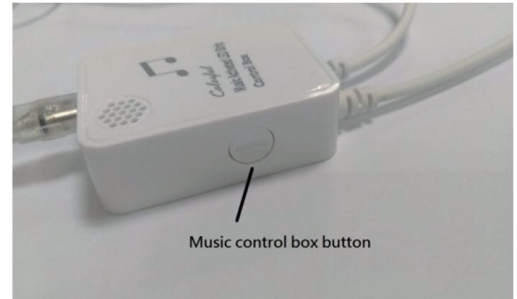
Use the OFF/ON buttons to turn the Light Strip ON or OFF. (see below picture D)  
 o Press the Color button to change between Red, Green, Blue, White, Orange, Yellow, Cyan, and Purple.  
 o Press the 12 Preset Functions : Auto, Jump, Fade, Flash, Move Right, Move Left, Outward, Inward, Rainbow, White Outward Inward, Meteor, and Music synchronization.  
 o Press the 2 speed buttons (+ /-) to increase or decrease the speed of the functions.



Picture D

# Music Activated Control Box

By depressing the button on the side of the music control box, the light strip can be controlled to switch between all 8 static colors and preset functions of the light strip.



**WARNING.**

Remote Control contains button cell battery.

HAZARDOUS IF SWALLOWED

KEEP OUT OF REACH OF CHILDREN

- \* SWALLOWING THE BATTERY MAY LEAD TO SERIOUS INJURY OR DEATH IN AS LITTLE AS 2 HOURS DUE TO CHEMICAL BURNS AND POTENTIAL PERFORATION OF THE OESOPHAGUS.
- \* IF YOU SUSPECT A CHILD HAS SWALLOWED A BUTTON BATTERY, IMMEDIATELY SEEK MEDICAL ATTENTION.
- \* REGULARLY EXAMINE DEVICES AND MAKE SURE THE BATTERY COMPARTMENT IS CORRECTLY SECURED, E.G. THAT THE MECHANICAL FASTENER IS TIGHTENED. DO NOT USE IF THE COMPARTMENT IS NOT SECURE.

## Battery Replacement

Battery: CR2025 3V Lithium

Refer to diagram on back of remote control.

Push the small tab on the side towards the larger tab, at the same time pull the larger tab towards you to open the battery compartment and remove the battery. Ensure that the used battery is always in sight by the user until it is safely disposed of out of reach of small children.

## Care and Maintenance

1. Before using or reusing, inspect product carefully. Stop using the product if it has cut, damaged or frayed wire insulation or cords, or exposed copper wire.
2. When not in use, store neatly in cool, dry location protected from sunlight.

Any Changes or modifications not expressly approved by the party responsible for compliance could void the user's authority to operate the equipment.

This device complies with part 15 of the FCC Rules. Operation is subject to the following two conditions: (1) This device may not cause harmful interference, and (2) this device must accept any interference received, including interference that may cause undesired operation.

NOTE: This equipment has been tested and found to comply with the limits for a Class B digital, pursuant to Part 15 of the FCC Rules. These limits are designed to provide reasonable protection against harmful interference in a residential installation. This equipment generates, uses and can radiate radio frequency energy and, if not installed and used in accordance with the instructions, may cause harmful interference to radio communications. However, there is no guarantee that interference will not occur in a particular installation. If the equipment does cause harmful interference to radio or television reception, which can be determined by turning the equipment off and on, the user is encouraged to try to correct the interference by one or more of the following measures:

- Reorient or relocate the receiving antenna.
- Increase the separation between the equipment and receiver.
- Connect the equipment into an outlet on a circuit different from that to which the receiver is connected.
- Consult the dealer or an experienced radio/ TV technician for help.