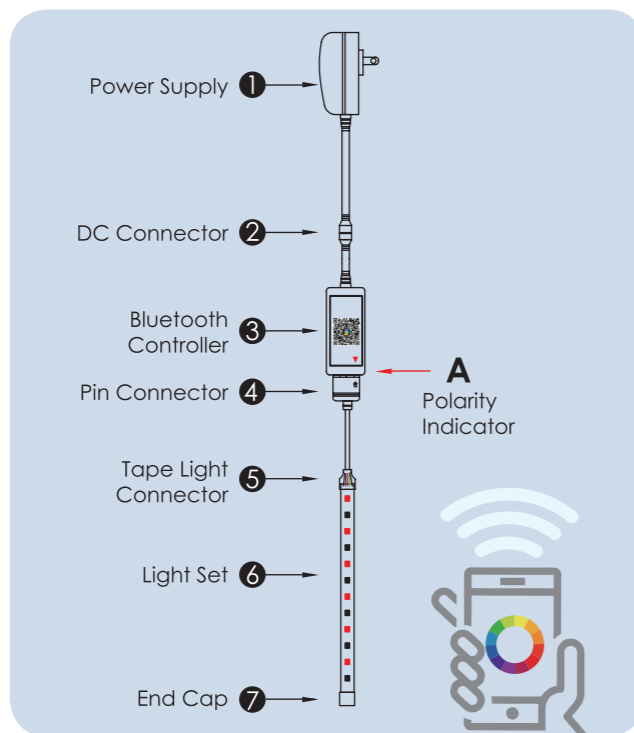




**Playlight™**

**BLUETOOTH  
TAPE LIGHT  
USER MANUAL**

**BLUETOOTH TAPE LIGHT**



**IMPORTANT NOTICE**

Only the light set marked (5) (6) and (7) is waterproof. Please do not place the entire product in wet environment for safety purposes.

Never subject (1) (2) (3) and (4) to water as this could damage the product and causes safety hazard.

①

**APP INSTALLATION GUIDE**

**SUPPORTED DEVICES**



**IOS Devices**

iPhone 4, iPad 3, iPad Mini, iPod touch and above, requires IOS 8.0 and above.



**Android Devices**

Devices with Android Version 4.3 and Bluetooth 4.0 and above.



**STEP 1**

Scan the Barcode on the Bluetooth Controller with your Smart phone.

**STEP 2**

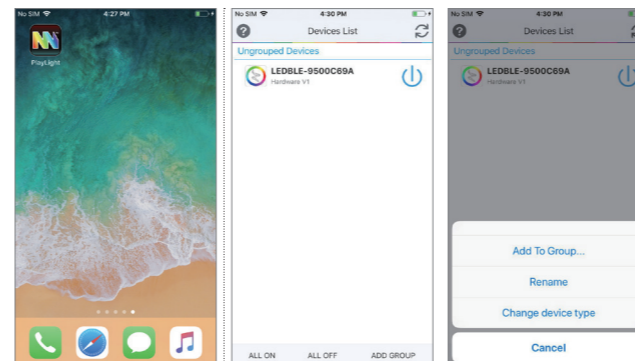
Select your operating system to be directed to the APP download page.

**STEP 3**

Download the APP.

②

**OPERATING INSTRUCTION**



**STEP 1**

Start the Play Light app

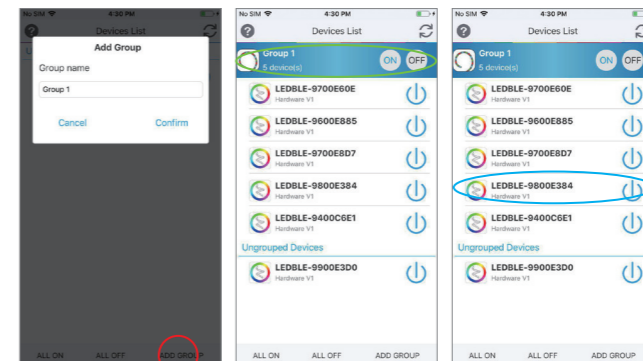
**STEP 2**

Ensure your Bluetooth is switched On. Your Light will appear on the Play Light app. Select to pair with your Tape Light.

- i) Press Once to enter into the control interface of the Tape Light
- ii) Long Press on Tape Light to add to group, rename and change device type

③

**OPERATING INSTRUCTION**



**Add To Group...**

- Create a group by pressing the "Add Group" button.
- Provide a name for your group.
- Add devices to your group by long pressing on the device shown on your screen, selecting "Add to Group" to your desired group.
- Enter the interface to control all your group devices by pressing on the name of the group you created (Green Circle).
- Individually control your Tape Light even after added to a group by pressing on the name of your Tape Light (Blue Circle).

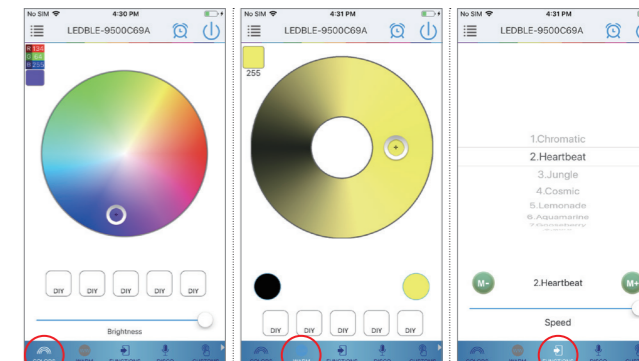
**Note:**

- 1) Do not install Bluetooth light with dimmer switch.
- 2) Bluetooth light does not require a PIN to connect to. Do not pair the light under Bluetooth settings.

IOS devices (Connect up to 5 Tape Light in a single group)  
Android devices ( Connect up to 4 tape Light in a single group )

④

**OPERATING INSTRUCTION**



**COLORS**

There are up to 16 Million color to choose from in the color dial. Tune to your desired brightness by sliding through the brightness bar.

Customized and save up to 5 of your favorite color and brightness by long pressing the "DIY" icon shown on the screen for 3 to 5 seconds.

**WARM**

(Applicable for RGBW Tape Light Only)  
Move the cursor on the dial switch to adjust the brightness of your Warm White color.

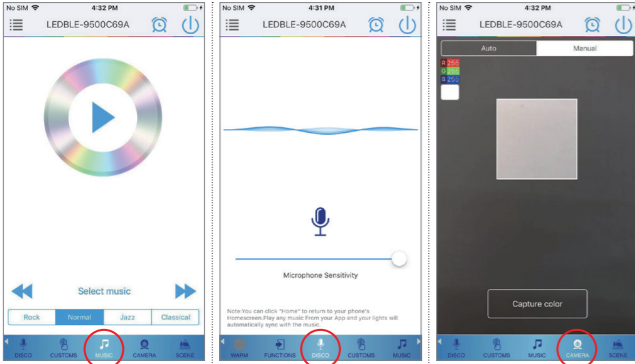
Customized and save up to 5 brightness settings by long pressing the "DIY" icon shown on the screen for 3 to 5 seconds.

**FUNCTIONS**

Select between 20 different functions for your Tape Light by pressing the M- or M+, or just by scrolling up and down. In addition, you can adjust the speed by moving the slider from to the left or right.

⑤

## OPERATING INSTRUCTION



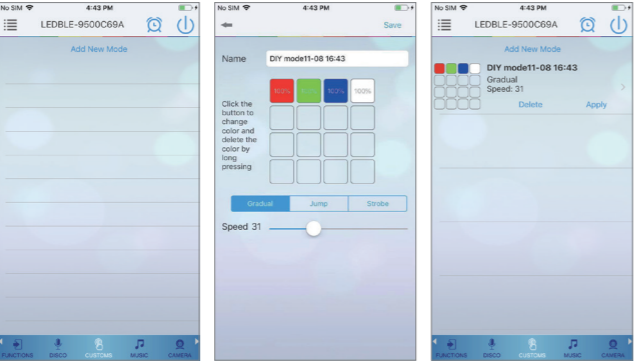
**MUSIC**  
IOS System user will be required to have music downloaded in iTunes or audio files copied to their IOS devices through iTunes.  
Android user can select music to sync with Tape Light on the local phone storage.

**DISCO**  
Tape Light brightness, speed and color will be sync with the sound captured from your phone microphone. You can adjust the microphone sensitivity by adjusting the slider.

**CAMERA**  
Using your phone or tablet's camera, you can select a color based on the object your camera captured. Under "Automatic" mode, your Tape Light will immediately show the similar color whenever your camera pointed at an object, whereas under "Manual" mode, you will have to manually select "Capture Color".

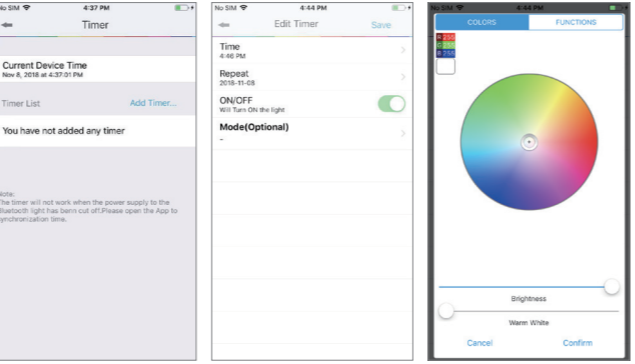
*Note: Music played via other APP will not be able to support this function.*

## OPERATING INSTRUCTION



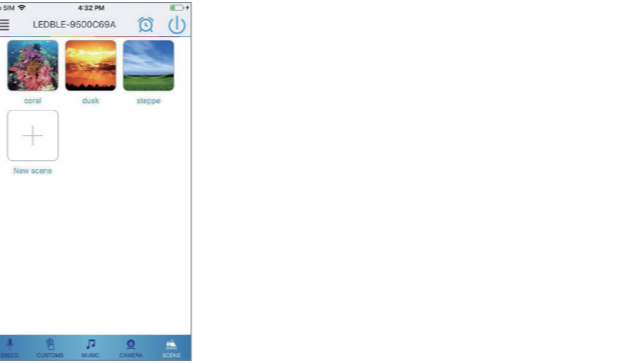
**CUSTOM**  
You can customize your favourite function by matching your color with the 3 functions available (Gradual, Jump and Strobe).  
Select "Add New Mode", press the square or rectangle to change the color, Long Press to delete the color selection. You can set 16 different color based on the sequence from upper left, ending at lower right.  
Select "Save" to store your settings.  
Select "Send" or "Apply" to use the settings on your Tape Light. You can always create a new custom setting, edit or delete the settings.

## OPERATING INSTRUCTION



**TIMER FUNCTION**  
You can set your tape light to automatically turn on or off with the built-in timer. Press the "clock icon" on the top right of your screen. The selection menu will be shown with Time, Repeat (Mon-Sun), ON/OFF switch and Mode ( Color setting, Brightness and function control).  
Do note that the timer will not operate when the power supply is interrupted. Settings will have to be resynchronize by opening the APP again.

## OPERATING INSTRUCTION



**SCENE**  
Match your tape light with the preset scene by selecting the pictures. Alternatively, you can add your own scene by taking a new picture or uploading from your photo album.

## OPERATING INSTRUCTION

**FCC STATEMENT**  
1. This device complies with Part 15 of the FCC Rules. Operation is subject to the following two conditions:  
 (1) This device may not cause harmful interference, and  
 (2) This device must accept any interference received, including interference that may cause undesired operation.  
 2. Changes or modifications not expressly approved by the party responsible for compliance could void the user's authority to operate the equipment.

**FCC Radiation Exposure Statement: (mobile device)**  
This equipment complies with FCC radiation exposure limits set forth for an uncontrolled environment. In order to avoid the possibility of exceeding the FCC radio frequency exposure limits, Human proximity to the antenna shall not be less than 20cm (8 inches) during normal operation.

**NOTE:** This equipment has been tested and found to comply with the limits for a Class B digital, pursuant to Part 15 or the FCC Rules. These limits are designed to provide reasonable protection against harmful interference in a residential installation. This equipment generates, uses and can radiate radio frequency energy and, if not installed and used in accordance with the instructions, may casue harmful interference to radio communications, However, there is no guarantee that interference will not occur in a particular installation. If the equipment does cause harmful interference to radio or television reception, which can be determined by turning the equipment off and on, the user is encouraged to try to correct the interference by one or more of the following measures:  
 --- Reorient or relocate the receiving antenna.  
 --- Increase the separation between the equipment and receiver.  
 --- Connect the equipment into an outlet on a circuit different from that to which the receiver is connected.  
 --- Consult the dealer or an experienced radio/ TV technician for help.

## FAQ

### How far can I control Bluetooth light from my phone ?

The operating distance is between 18-30 meters without obstructions. However, obstruction such as wall and furniture will further reduce the operating distance of your Bluetooth light.

### How many lights can I control at the same time ?

You can control up to 5 lights for IOS and 4 lights for Android devices at the same time in a group.

There is no limit of how many groups you can create.

### Why doesn't the timer function work ?

The timer will not work when the power supply to the Bluetooth light has been cut off. Please open the "App" to synchronize the timer again.

### What shall I do if I can't connect to the light or adding a new device failed ?

Switch "Off" the power supply to the Bluetooth light and switch it back "On". Refresh the "App" by pressing the refresh button. If the problem persists, restart your "App" or your phone.

### My phone constantly disconnect from the Bluetooth light

If you are noticing connectivity issues with the Bluetooth light, it is likely due to one or more of the followings:

1. The light is placed in a recessed or enclosed light fixture that interferes with the Bluetooth signal.
2. The bulb is placed in a metal light fixture that interferes with the Bluetooth signal.
3. Your phone is too far from the light.

Make sure your light is placed in an open light fixture that does not cause interference with the Bluetooth signal.

## FAQ

### I am being asked for a PIN when connecting to the light

Bluetooth lights does not require a PIN to connect to. If you are being asked for a PIN, Do not pair the light under Bluetooth settings, The Bluetooth light requires the "App" to connect to. Simply open the "App" and click on "Add Device" for the lights that show up.

### Why can't my "App" detect my Bluetooth light ?

1. Ensure the power supply to the Bluetooth light is switched on.
2. Metal can act as a shield to Bluetooth signals. If you are installing the Bluetooth light to a metal frame, the Bluetooth light maybe not be detected in the "App".
3. Only one phone can be paired to the Bluetooth light at a time. To pair with a new phone, always ensure the "App" of the other phone is not opened to avoid any interference.

### Why do we need location permission and location services ?

#### (Android Devices Only)

A permission request regarding Location Services is only applicable for Android 6.0 +, which is a new requirement from Google for all Bluetooth apps. If you do not use Android 6.0 + then there is no need to turn on Location Services. The other permission requests remain the same as they are specific to functionality:

- Camera - use your mobile devices camera option to capture specific colors
- Microphone - allows the light to move with the tone of your voice, music, etc.
- Photos/Media/Files - allows you to save the colors from a specific scene in your Photos/Media/Files
- Location Services - a new requirement from Google on All Bluetooth apps for Android 6.0 +.