



GPRS Stick Datalogger Quick Installation Manual

Version: 2.3



Delivery Content
■ 1 GPRS stick
■ 1 GPRS Antenna
■ 1 Quick Installation Manual

1 Install the datalogger

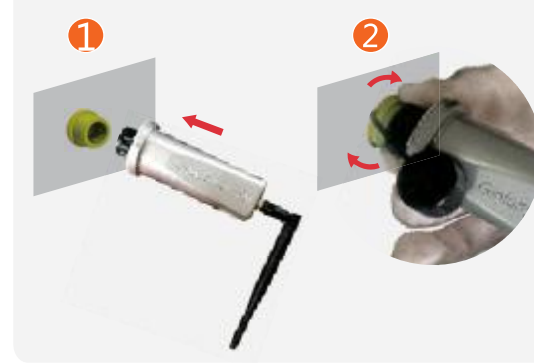
Step1: Open the datalogger shell and install the SIM card.



Step2: Connect the datalogger to the corresponding 4-pin COM port of the inverter. A Solis 5K inverter is used here as an example. Please follow the instructions below:



Install the datalogger:
1. Insert GPRS Stick to COM port.
2. Rotate the black circle clockwise while pushing the datalogger.
(do not rotate the datalogger housing directly)



NOTE
The device must be installed away from the strong magnetic field produced by large electrical appliances such as microwave oven, refrigerator, telephone, metal walls, etc. Otherwise, the communication quality may be affected. It may also be affected by lightning storm.

Step3: Use your mobile phone to send a text message to the SIM card in the stick. The content of the text message is AT+YZAPN=<apn>,<user>,<pwd>
The angle brackets are replaced with actual ones. If not, leave them blank and add a carriage return at the end.

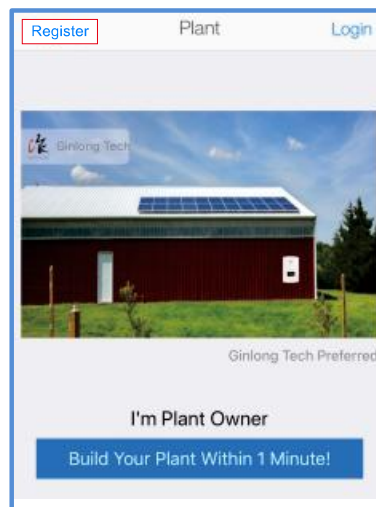
NOTE
If APN does not work properly after modification, please contact the installer or SOLIS professional.

2 Create the Solis Home Account

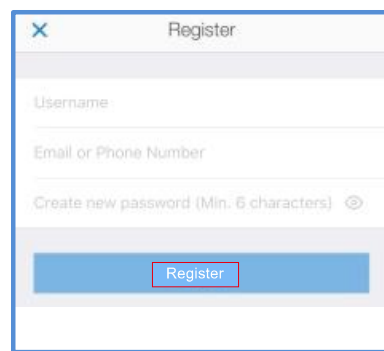
Step1: Scan the QR codes below to download the APP.



Step2: Click "Register".

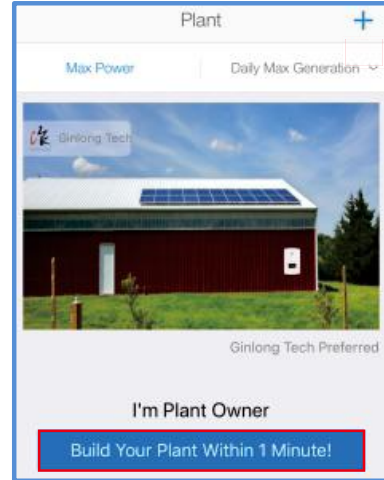


Step3: Input the required information and Click "Register" at the bottom.



3 Create the plant

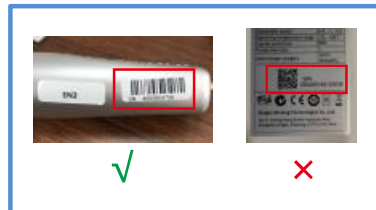
Step1: Enter the main page of Solis Home APP. Click the "Build Your Plant Within 1 Minute!" on the right top.



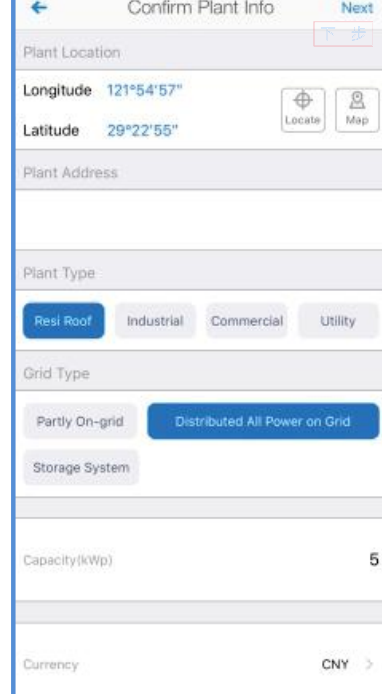
Step2: Scan the SN number on the datalogger to build the plant or manually input it.



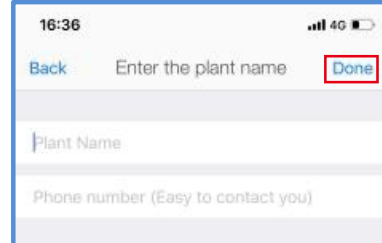
NOTE
Please scan the SN number on the datalogger, not the SN number on the inverter.



Step3: Input the plant information and then click "Next".



Step4: Enter the plant name, then click the "Done".



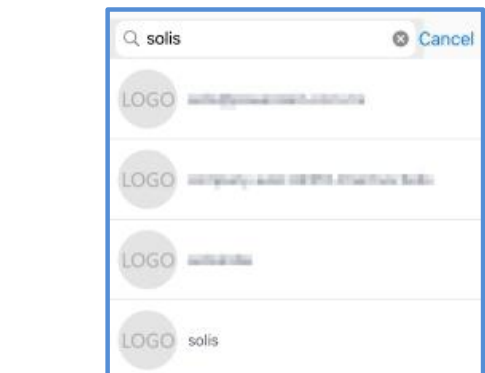
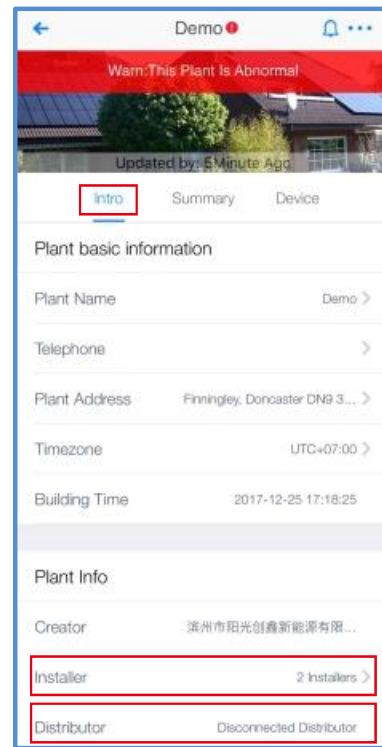
NOTE
View plant and device data in 5-10 minutes later.

4 Link your plant to an installer

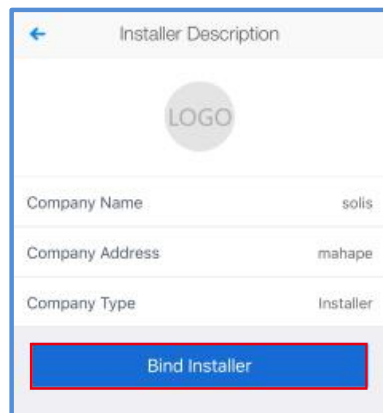
Step1: Click the plant on the main page. Then click "Intro".



Step2: Click "Installer" or "Distributor" and input Installer/Distributor name and search it.



Step3: Click your installer and click "Bind Installer".



5 FCC Certification

This device complies with part 15 of the FCC Rules. Operation is subject to the following two conditions:
(1) This device may not cause harmful interference, and (2) this device must accept any interference received, including interference that may cause undesired operation.

FCC warning:
Any Changes or modifications not expressly approved by the party responsible for compliance could void the user's authority to operate the equipment.

Note:
This equipment has been tested and found to comply with the limits for a Class B digital device, pursuant to part 15 of the FCC Rules. These limits are designed to provide reasonable protection against harmful interference in a residential installation. This equipment generates uses and can radiate radio frequency energy and, if not installed and used in accordance with the instructions, may cause harmful interference to radio communications. However, there is no guarantee that interference will not occur in a particular installation.
If this equipment does cause harmful interference to radio or television reception, which can be determined by turning the equipment off and on, the user is encouraged to try to correct the interference by one or more of the following measures:
-Reorient or relocate the receiving antenna.
-Increase the separation between the equipment and receiver.
-Connect the equipment into an outlet on a circuit different from that to which the receiver is connected.
-Consult the dealer or an experienced radio/TV technician for help.

This equipment complies with FCC radiation exposure limits set forth for an uncontrolled environment. This equipment should be installed and operated with minimum distance 30cm between the radiator & your body.

Contact
Please contact us if you have any technical problems in terms of the product. Please provide the following information as well:
◆ Inverter SN
◆ Datalogger SN
◆ Problem Description
Ginlong Technologies Co., Ltd.
No. 57 Jintong Road, Binhai Industrial Park, Xiangshan, Ningbo, Zhejiang, 315712, P.R.China.
Tel: +86 (0)574 6578 1806
Fax: +86 (0)574 6578 1606
Email : info@ginlong.com
Web : www.ginlong.com