



IBeacon Datasheet
Model : BLM5728

SuZhou Beelinker Technology Inc

MODEL NO/DESCRIPTION

Product Name	BLE
Product Model	BLM5728
Version	1.3
Release Date	2021.12.1

LIST

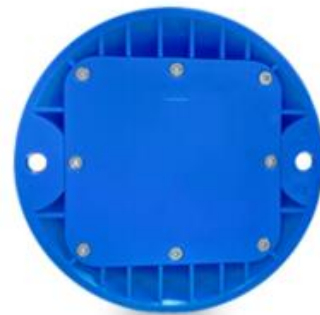
1.	Product Description.....	4
2.	Production Features	4
3.	Application Scenario	5
4.	Characteristics.....	5
5.	Electrical Parameters	6
6.	Configuration Toolkit.....	7
7.	Certification	8
8.	Package	8
9.	Quality Assurance	8
10.	Contact	9

1. Product Description

With more than 10 years in-house design and practice experience in the iBeacon market, we bring the latest Bluetooth 5.1 technology, patented power saving solutions and Texas Instrument CC2640 chip into our latest product. To meet the security sensitive scenarios, it features the data security access in bi-direction communication and encryption by the random seed. It pass the Apple iBeacon standards. For the outlet, the housing is a rotating cylinder and made of ABS. By using a snapped bracket, It' s very flexible to replace the battery and can be used in varies of environment.



Product Outlet



Product Outlet

2. Production Features

- ★ Ultra-low power consuming, 10 years without recharge (0db, 500ms interval)
- ★ Ultrasonic plastic sealing, waterproof grade IP68
- ★ Professional antenna design,the effective distance of ground transmission is 30 meters
- ★ Proven solution and widely used in the market

3. Application Scenario

It is widely used in parking lot vehicle navigation positioning, tunnel construction positioning an inspection, personnel positioning management in petrochemical enterprises, shared bike parking management and other scenarios.



4. Characteristics

Model	BLM5728
Water & Dust Protection	IP68
Housing Materials	PC+PBT
Outlet Color	White、 Blue、 Gray
Dimension	Φ120×20mm
Weight	180g(With Battery)
Battery	ER14505H*2 (Li)
Operating Voltage	DC3.6V
Installation	Button base / Tie

5. Electrical Parameters

Model	BLM5728
Quiescent Current	1uA
Typical current , Transmitting	6.1mA
Typical current Receiving	5.9mA
Battery Model	ER14505H*2
Battery Capacity	5200mAH
Battery Life	10 years (0dBm&500ms)
Operation Temperature	-40°C ~ 85°C
Operation Frequency	2.4 GHz Bluetooth
Transmit Power	-21~5dBm(Typical 0dBm)
Broadcast Period	20ms~10s(Typical 500ms)
Signal Range	Typical 100 meter
Security	Only compliable to OEM APP(with security access)
Application Supported OS	Requires iOS 7.0 or later Requires Android 4.3 or later


6. Configuration Toolkit

Our company has app/ applet tools (ios/android platform) that can support the configuration parameters of this product. The configurable parameters include UUID, major, minor, transmission power and transmission interval. The figure below is a typical configuration interface. If the customer has the field configuration requirements, please ask our technical support.



7. Certification

8. Package

Package	Open Carton
Chart	
Quantity	100 pcs
Gross	16kg
Size	370*380*300mm

9. Quality Assurance

The factory is certified to ISO9001. Every sample will be verified (Transmit power, power consumption, reliable test) before shipping.



10. Contact



The contact information block features the Beelinker Technology logo at the top left. To the right are two red logos: one with a stylized 'P' and stars, labeled '国家专利' (National Patent), and another with a stylized 'TP', labeled '高新企业' (High-tech Enterprise). Below these are several small images: a woman in a lab coat working at a computer, a group photo of staff outdoors, a piece of electronic equipment, a person in a lab coat working at a workstation, a person in a lab coat working at a workstation, a person in a lab coat working at a workstation, and a person in a lab coat working at a workstation. At the bottom, contact details are provided: a phone icon followed by '0512-62997201-8831', a globe icon followed by 'www.beelinker.com', and an envelope icon followed by 'zhangyan@beelinker.com'. Below this is the address: '江苏省苏州市工业园区林泉街399号南工院'.

博联科技
BeeLinker Technology

国家专利 高新企业

0512-62997201-8831 www.beelinker.com zhangyan@beelinker.com
江苏省苏州市工业园区林泉街399号南工院

Disclaimer: This manual is only for reference. All rights reserved by the Beelinker Technology Inc.

FCC WARNING

This device complies with part 15 of the FCC Rules. Operation is subject to the following two conditions: (1) this device may not cause harmful interference, and (2) this device must accept any interference received, including interference that may cause undesired operation.

Any changes or modifications not expressly approved by the party responsible for compliance could void the user's authority to operate the equipment.

NOTE: This equipment has been tested and found to comply with the limits for a Class B digital device, pursuant to Part 15 of the FCC Rules. These limits are designed to provide reasonable protection against harmful interference in a residential installation. This equipment generates, uses and can radiate radio frequency energy and, if not installed and used in accordance with the instructions, may cause harmful interference to radio communications.

However, there is no guarantee that interference will not occur in a particular installation.

If this equipment does cause harmful interference to radio or television reception, which can be determined by turning the equipment off and on, the user is encouraged to try to correct the interference by one or more of the following measures:

- Reorient or relocate the receiving antenna.
- Increase the separation between the equipment and receiver.
- Connect the equipment into an outlet on a circuit different from that to which the receiver is connected.
- Consult the dealer or an experienced radio/TV technician for help.

To maintain compliance with FCC's RF Exposure guidelines, This equipment should be installed and operated with minimum 20cm distance between the radiator and your body: Use only the supplied antenna.