

ITEM: LA19-BTSP-12W-ND-XX-R A19 12W BLUETOOTH LED SPEAKER BULB INSTRUCTIONS

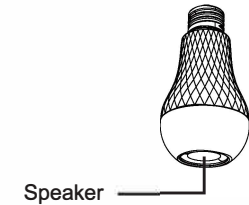
Before using, please read the instruction manual carefully first.
Please keep this manual, Can be consult at any time.
Please on the basis of fully understanding, used correctly.

产品参数:

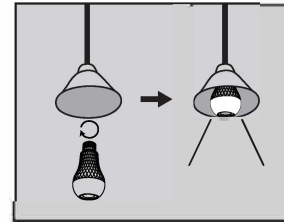
| | |
|-----------------------------|--|
| Base | E26/E27 |
| Size | Φ60mm*h118mm(E27)/φ60mm*h122mm(E26) |
| Bulb | PC |
| Appearance | White shrink milk white bulb white speaker |
| Materials | Aluminum+pbt/pc |
| Flame rating | 130°C V-0 |
| IP code (ip) | IP20 |
| Weight (g) | |
| Start up | <0.5s |
| Switch time | 30000 |
| Lifetime | 15000h |
| Dimmable | No |
| Rated voltage | AC120-240V |
| Operating voltage | AC90-263V |
| Rated frequency | 50/60Hz |
| Input current | 200mA(LED+ speaker) |
| Surge current | ≤5A |
| Rated power | 12W(LED+ speaker) 9+3 |
| Power range | 8W~12W |
| PF | PF>0.5 @120V |
| Luminous flux | 720~750lm |
| Luminous efficiency | 80~83lm/w |
| Beam angle | 200° |
| Maximum intensity | 95cd |
| Ra | ≥90 |
| Humidity | Dry / damp |
| Use environment | Do not use in closed environment |
| Operating temperature range | -15~40°C |

Bluetooth Speaker Specification

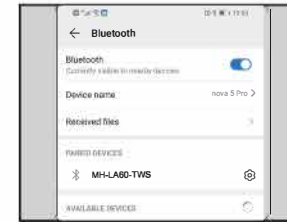
Bluetooth name : MH-LA60-TWS
stereo : YES
TWS : YES
Speaker : 4ohm 3w D36
Power : 3W
Bluetooth version : 5.0
Sound pressure level(SPL) : 82@1W/m
Bluetooth connection distance: 10m



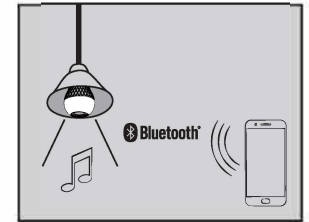
Usage steps



Put on the bulb;
Turn on the bulb;



Search for bulb with compatible
Bluetooth device, bulb name
"MH-LA60-TWS"



Connect a light bulb, play music
or other.

If two bulbs are turned on at the same time within 10 meters, as long as one of them is connected, the other will automatically form a pair with the connected bulb, forming the left and right channels.

Notes

1. When installing and replacing the bulb, the power must be cut off to ensure safety.
2. It should not be used for dimming lighting and electronic switching. Too high or too low voltage will affect the normal service life.
3. It is not suitable to be used in the lamps and lanterns that are sealed and close to the bulb to avoid danger caused by excessive temperature.
4. In case of abnormal operation (self-extinguishing and flashing), please check the contact performance between lamp and lamp holder and the power supply voltage, and replace the lamp if there is no problem.
5. Do not clean the lamp with chemical solution and do not spray insecticide to the lamp.

FCC Caution:

This equipment complies with FCC RF radiation exposure limits set forth for an uncontrolled environment.
Any Changes or modifications not expressly approved by the party responsible for compliance could void the user's authority to operate the equipment.
This device complies with Part 15 of the FCC Rules, operation is subject to the following two conditions:
(1) This device may not cause harmful interference, and (2) this device must accept any interference received, including interference that may cause undesired operation.