

Instruction Manual

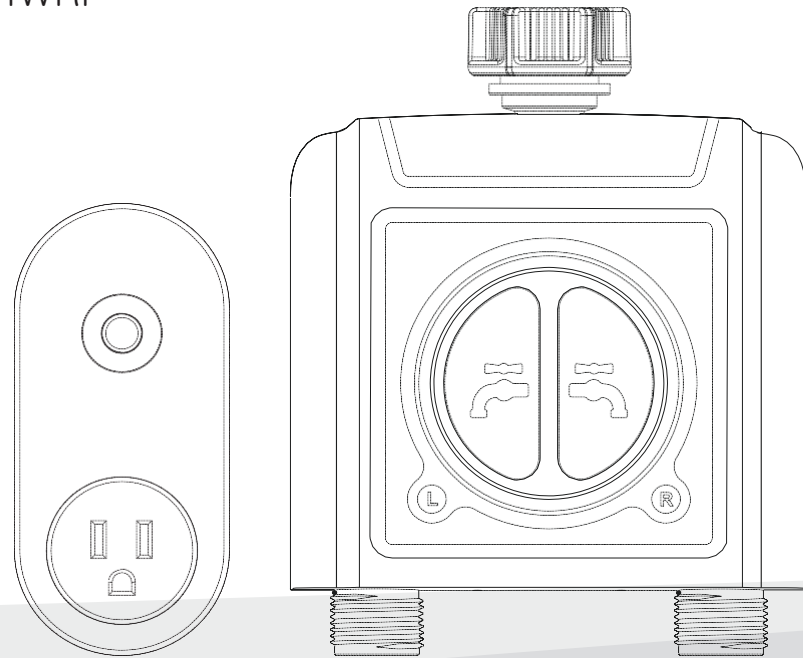
2 Zone WiFi Water Timer with WiFi Hub

Model: TTV203WRF + TWG004WRF

| Customer Support |
US Free Hotline: +1-833-3815659
E-mail: service@rainpointus.com
Facebook: @Rainpointglobal

| RAINPOINT® |
www.rainpointus.com

*SAVE THIS MANUAL FOR FUTURE REFERENCE.



WELCOME TO RAINPOINT

RainPoint is pleased to present the **2 Zone WiFi Water Timer with WiFi Hub (Model: TTV203WRF + TWG004FRF)**—a smart sub-zone watering timer system for residential applications. Designed with the needs of the customer in mind, the model offers 2 high flow valves to water separate areas, simplified APP programming and an impressive range of features typically found in WiFi water timers costing twice as much.

While it's affordable, the model is without a doubt a professional grade product. The timer has a large and handsome body, equipped with 2 large manual buttons, an LCD indicator light and a sturdy casing, which is rain-proof and sun-proof, very suitable for outdoor use. The WiFi hub increasing range of garden watering and irrigation control equipment that are controllable via your smartphone in both iOS and Android formats.

Whatever your outdoor watering needs, RainPoint provides best-in-class irrigation products to help you more effectively manage and control your watering. Thank you for choosing RainPoint!

More product information and user guide will happen soon

 : RainPoint

 : @Rainpointglobal

Have Questions?

 : 1-833-3815659

 : service@rainpointus.com

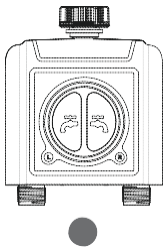
TABLE OF CONTENTS

INTRODUCTION	1-4	WIFI SOCKET	17
CONTENTS IN THE BOX	01	Manual Power ON/OFF	Power ON/OFF By Schedule
PRODUCTS OVERVIEW	02	SMART AUTOMATION	18
TTV203WRF 2 Zone WiFi Water Timer	02	Automation & Tap-to-Run	How to set the automatic rain delay?
TWG004FRF WiFi Hub	03	HOME MANAGEMENT	21
FEATURES OVERVIEW	04	RESET THE DEVICE	22
INSTALLATION	5-10	TROUBLESHOOTING	23
STEP 1. INSTALL APP ON YOUR PHONE	05	19
STEP 2. CONNECT THE WIFI HUB	06	WARRANTY	25
STEP 3. CONNECT THE WIFI TIMER	07	CUSTOMER SUPPORT	25
STEP 4. INSTALL THE WIFI TIMER	09		
STEP 5. TEST BEFORE USE	10		
APP PROGRAMMING	11-21		
APP HOME SCREEN	11		
2 ZONE WIFI IRRIGATION TIMER	12		
Device	Parameter.....		12
Manual	Watering		13
Watering Plan & Manual Rain Delay			14
WiFi Soil Sensor & Water Flow Meter*			16

*WiFi soil sensor is sold separately, this kit does not contain WiFi soil sensor

INTRODUCTION

CONTENTS IN THE BOX



A. 1 x TTV203WRF 2 Zone WiFi Water Timer

B. 1 x TWG004WRF WiFi Hub

C. 1 x Instruction Manual

D. 1 x Quick Setup Guide

FCC Notice:

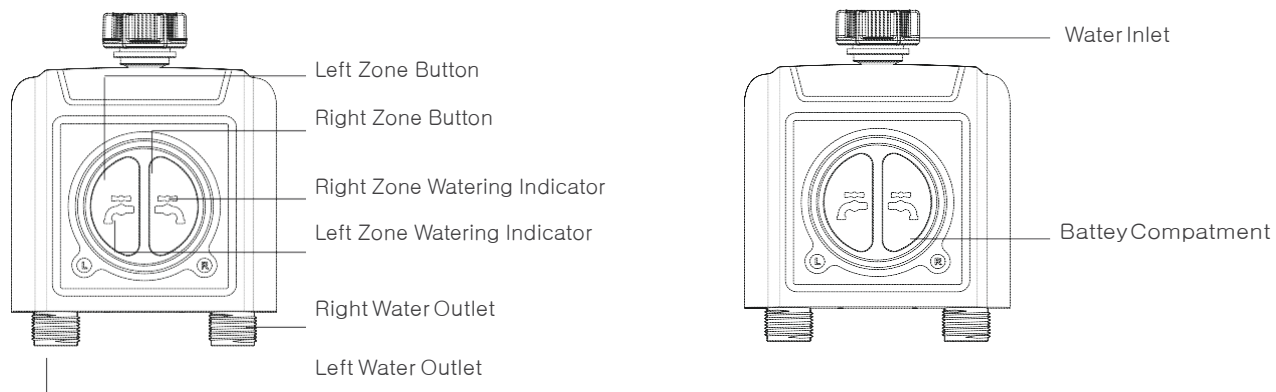
This device generates radio frequency energy and may cause interference to radio and television reception. It has been type tested and found to comply with the limits for a Class B computing device in accordance with the specifications in Part 15 of FCC Rules, which are designed to provide reasonable protection against such interference in a residential installation. However, there is no guarantee that interference will not occur in a particular installation. If this equipment does cause interference to radio or television reception, which can be determined by turning the equipment off and on, the user is encouraged to try to correct the interference by one or more of the following measures:

- Reorient the receiving antenna
- Move the device away from the receiver
- Plug the device into a different outlet so that device and receiver are on different branch circuits.

If necessary, the user should consult the dealer or an experienced radio/television technician for additional suggestions.

PRODUCTS OVERVIEW

TTV203WRF 2 Zone WiFi Water Timer



Specificati, n

Range Between WiFi Hub and Timer: 160 ft in the open area without interference

Working Water Pressure : 0.5 bar to 8 bar(7.25-116.03PSI)

Temperature Operating Range : 1. C - 50. C (33.8. F-122. F)

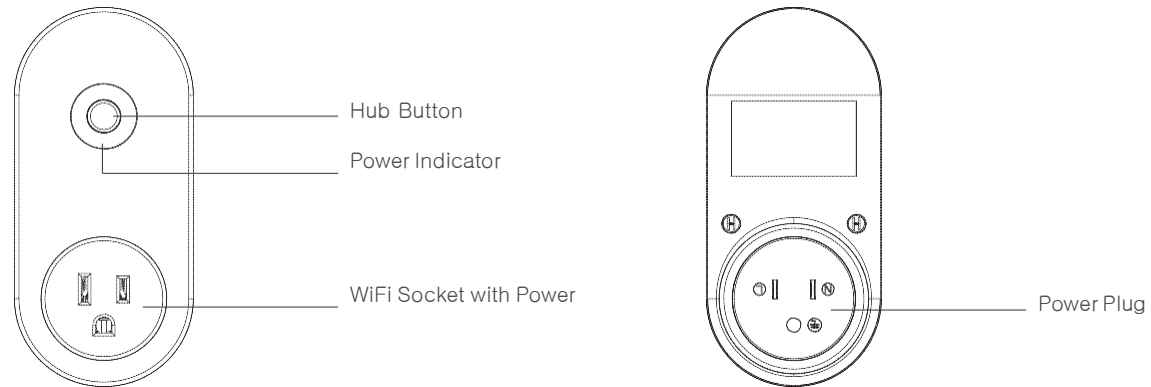
Power By : 4 AA alkaline batteries (not included)

WaterProof : IP54

⚠ For outdoor use with cold water only.

Keep away from freezing. In freezing weather, the timer should be placed indoors. Used up or dead batteries must be removed from the timer and disposed of properly.

TWG004WRF WiFi Hub



Specificati. n

Range Between WiFi Hub and Router: 160 ft in the open area without interference

Temperature Operating Range: 1. C - 50. C (33.8. F - 122. F)

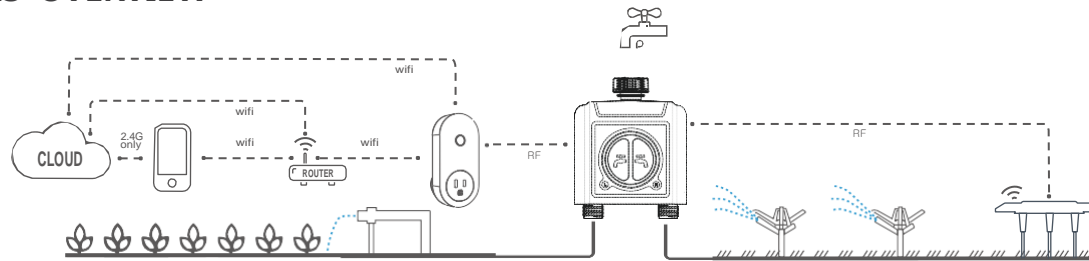
WiFi Frequency Band: 2.4Ghz Only

Input: 220-240V 、 50Hz 、 16A

⚠ For Indoor Use Only

Only applicable to 2.4Ghz WiFi. If your router is a dual-band router, please independently enable the 2.4GHz WiFi band and name it differently from the 5GHz WiFi band.

FEATURES OVERVIEW



- 1) **WiFi Remote Control:** Connect with 2.4GHz WiFi, set and check irrigation schedule by APP.
- 2) **2 Water Outlets:** Watering schedules can be set independently in different zones.
- 3) **WiFi Socket:** The WiFi Hub can be use as WiFi socket.
- 4) **Manual Watering:** Manually turn on/off watering and set watering time.
- 5) **Watering Program Schedule:** Each zone can set up to 3 separate watering programs per day. Each watering programs has different start time and watering duration.
- 6) **Automatic Watering:**
 - ① When the WiFi timer is connected to the WiFi soil sensor (not included), it can automatically irrigate or stop according to the soil temperature and humidity data;
 - ② When you locate the home address for the timer, the APP will automatically synchronize the local weather information, and the timer can be automatically executed according to the weather trigger conditions you set.
- 7) **Rain Delay:** Manual Rain Delay and Automatic Rain Delay
- 8) **Water Flow Meter:** Built-in water flow meter to track water usage in the last 10 days.
- 9) **Two Watering Modes:** Irrigation mode and Mist mode.
- 10) **Family Management with family:** Home Management allows you to Add family members and give them permissions, manage the irrigation of your home garden together.
- 11) **Low Battery and Water Leak Alarm:** APP will send you alert messages when low battery or product failure.
- 12) One WiFi hub can pair with maximum 4 WiFi water timers. One WiFi water timer can pair with 2 WiFi soil sensor.
 - △ * Only compatible with Rainpoint TCS005FRF Wi-Fi soil sensor (not included).
 - △ * Only applicable to 2.4Ghz WiFi

INSTALLATION



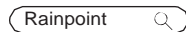
Tips:

Please scan the QR code or search the link to access the setup video or FAQ to install the device quickly and easily.

Setup Video : www.rainpointus.com/pages/playlist

FAQ: www.rainpointus.com/downloads/faq

STEP 1. INSTALL APP ON YOUR PHONE

A screenshot of the Rainpoint app's registration screen. The screen is titled 'Register' and has a back arrow in the top left corner. It features a dropdown menu for 'United States of America', an input field for 'Email Address', and a green button labeled 'Get Verification Code'.

1. Download the Rainpoint App

Search for "RainPoint" on Google Play or App Store or scan the QR code to download the Rainpoint APP.

2. Register your Rainpoint account

Open your RainPoint APP, select **Set Up**

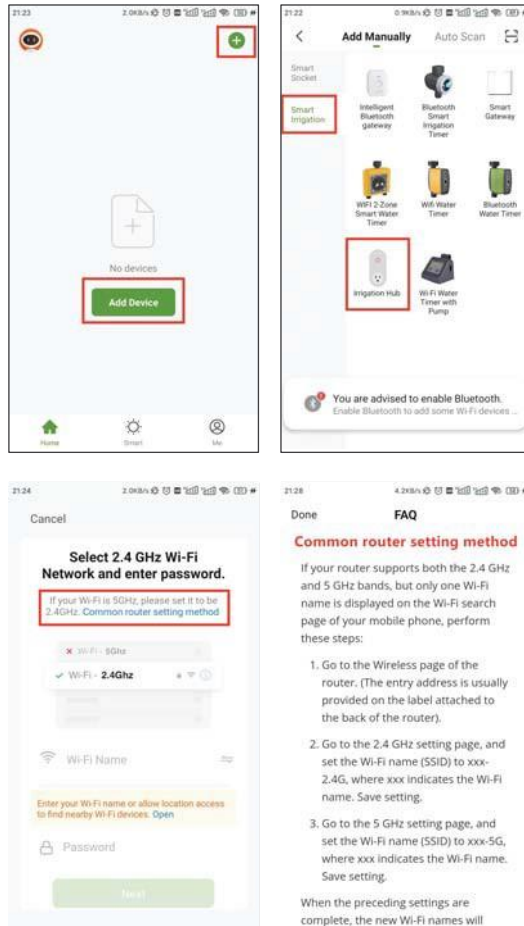
Follow the prompts to register a RainPoint account with your email or mobile number.

Note:

Ensure your county/region details are correct at this stage.

You may be prompted to allow access your location. This allows the app to show weather information, and can still function if you choose to opt out.

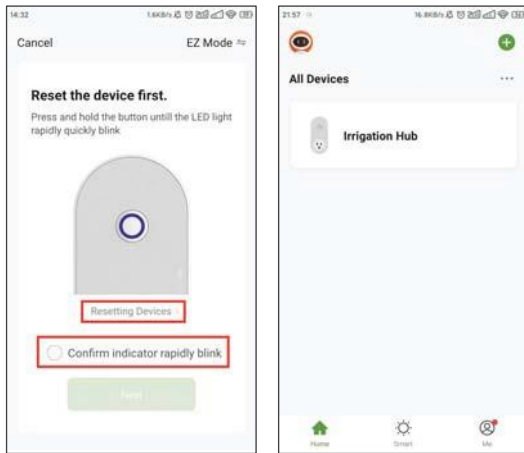
STEP 2. CONNECT THE WIFI HUB



1. Plug your WiFi Hub to an independent power source near your WiFi router and the outdoor location of your timer.
2. Open RainPoint App and tap "Add device" or "+" to add a new device.
3. Tap "Smart Irrigation" and "Add Manually", then select "Irrigation Hub"
4. select 2.4Ghz WiFi, and enter the password.

Tips:

If your router is a dual-band router, and you cannot identify the 2.4Ghz or 5Ghz WiFi, please tap the blue words "Common router setting method" to name the 2.4Ghz WiFi differently, then you can select it individually.



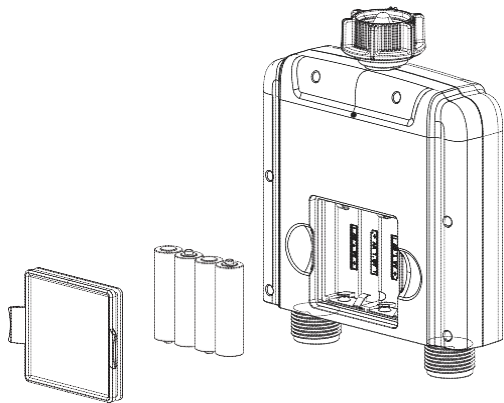
5. Press and hold the WiFi hub button until the power indicator blink rapidly (**2 times per second**). Then select **"Confirm indicator rapidly blink"** and tap Next. The APP will search and pair your WiFi hub automatically.

Note:

If the indicator doesn't blink rapidly (2 times per second), please tap **"Resetting Devices"** and follow the prompts (Or refer to the **"RESET THE DEVICE"** section of this manual) to reset the WiFi hub and make the hub indicator blink rapidly.

6. After the connection is successful, the color icon of irrigation hub will be displayed on the APP home screen.

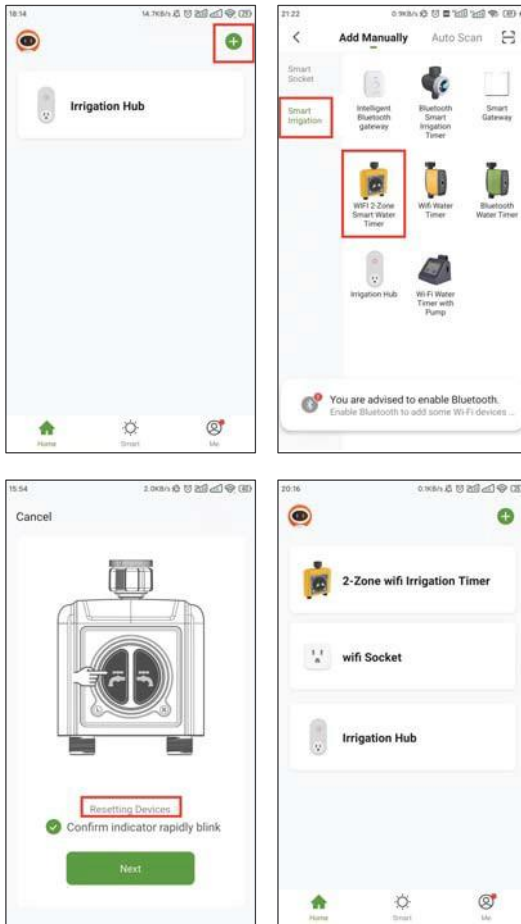
STEP 3. CONNECT THE WIFI TIMER



1. Inset **4 new AA alkaline batteries** into the battery compartment of the timer. Replace the battery cover and make certain it is secured.

⚠ WARNING:

- *Please use only alkaline batteries.
- *Do not mix old and new batteries.
- *Batteries are to be inserted with the correct polarity.
- *Exhausted batteries are to be removed from the product.
- *Please remove the battery from long-term no use.



2. Return to the APP home screen, and tap “⊕” to add the WiFi timer.
3. Tap “Smart Irrigation” and “Add Manually”, then select “WIFI 2-Zone Smart Water Timer”

4. Press and hold the **left button** on the timer until the left and right indicators blink rapidly at the same time (**2 times per second**). Then select “confirm indicator rapidly blink” and tap Next. The APP will search and pair your WiFi timer automatically.

Note:

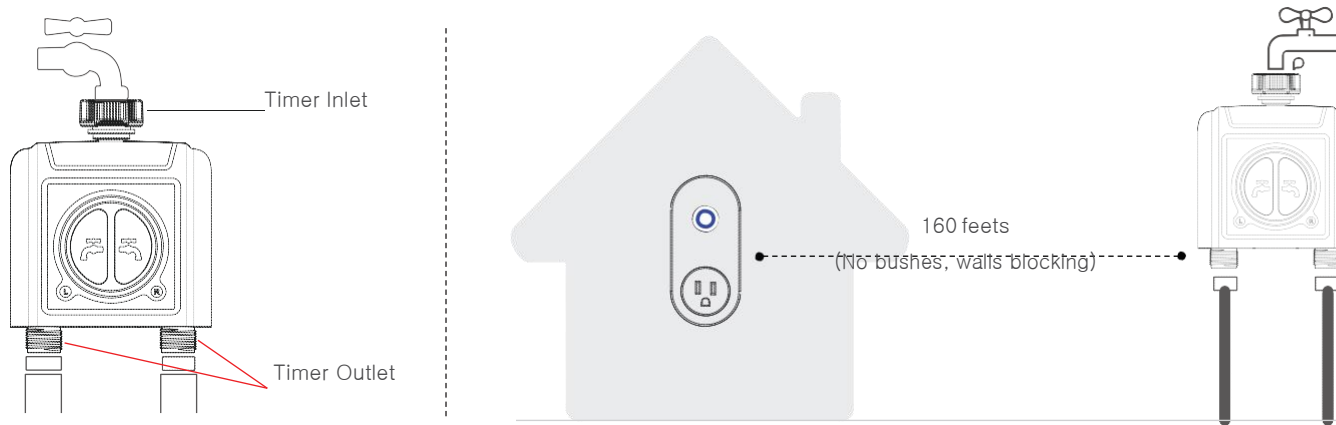
If the indicators don't blink rapidly (2 times per second), please swipe the page and tap “**Resetting Devices**” and follow the prompts (Or refer to the “**RESET THE DEVICE**” section of this manual) to reset the WiFi timer and make the timer indicators blink rapidly.

5. After the connection is successful, the color icons of WiFi timer and WiFi socket will be displayed on the APP home screen.

Tips:

If necessary, **three additional WiFi timers can be added to the RainPoint APP through a WiFi hub**. A separate WiFi timer is available on Amazon.

STEP 4. INSTALL THE WIFI TIMER

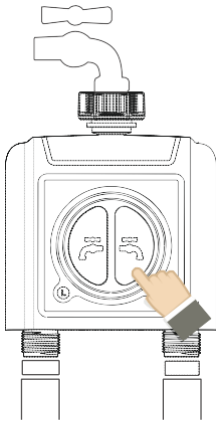


1. Attach the timer inlet to the outdoor faucet/spigot (hand tighten only). From the timer outlet connect a drip irrigation system or a garden hose.

⚠ WARNING:

- * The WiFi timer can only be used for cold water.
- * The WiFi timer uses a 433MHz RF connection to communicate with the WiFi Hub, and must be within a 160ft range, line of sight, of the WiFi Hub.
If there are walls, iron gates, or bushes blocking, please shorten the distance between them to better receive the signal.
- * Soil will absorb WiFi and RF signals, **the best location of the timer is 4 to 8 feet (1.2 to 2.4 meters) above the ground.**
- * Do not place the WiFi timer in an underground valve box or anywhere your WiFi and RF signal will be obstructed.
- * Under freezing weather, the water timer should be removed from the tap and placed properly indoor to avoid any danger of freezing.

STEP 5. TEST BEFORE USE



Congratulations, you have completed the connection and installation of the 2 zone WiFi water timer. Please test whether the internal valve of your water timer is normal before using it.

1. Keep the faucet turned off.
2. Press and hold the left/right zone button of the timer for 3–5 seconds, with a "click" sound, the left/right zone valve inside the timer opens for manual watering. After a few seconds, press and hold the left/right zone button again, the "click" will sound again, and the left/right zone valve will close.
3. Turn on the faucet a little bit, press and hold the left/right zone button of the timer to check if the water flow out or shut off as expected. If yes, the valve is normal, please use it with confidence! If not, please repeat the above steps several times.

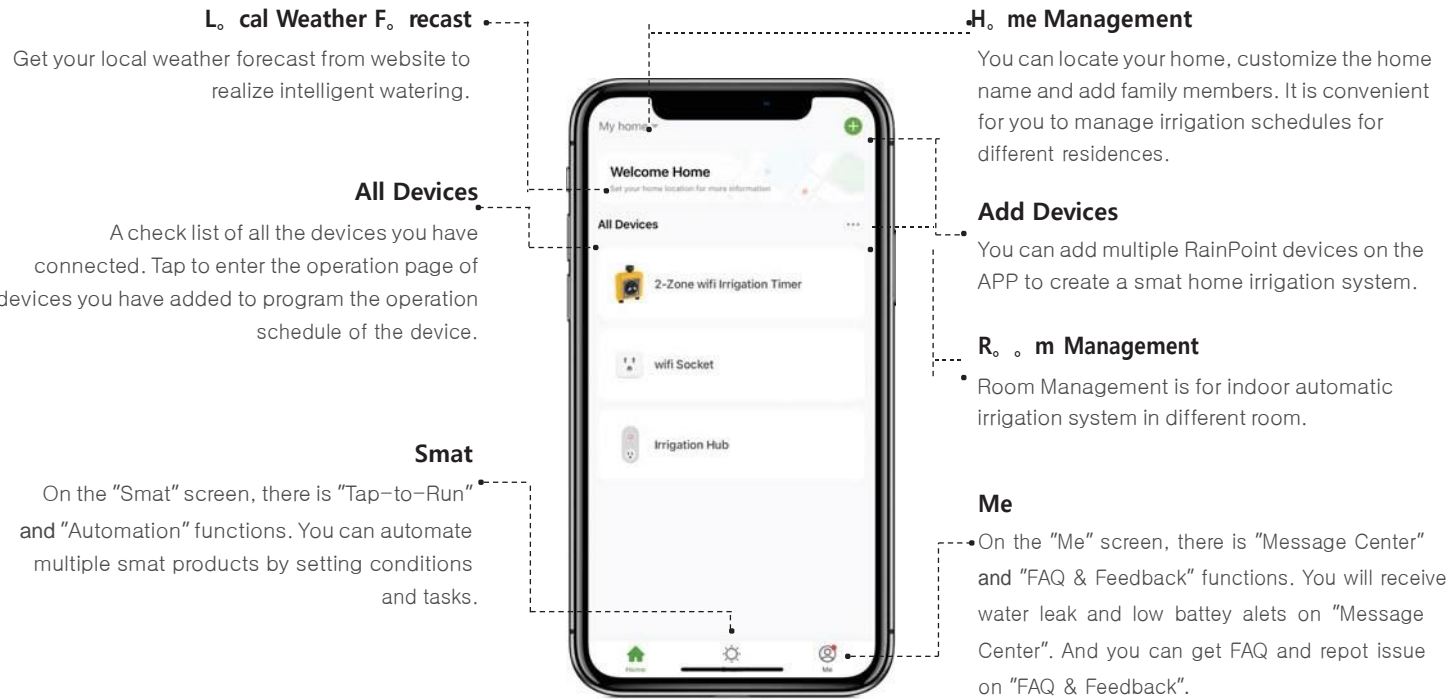
The test is over, everything is normal, please keep the faucet fully turned on!

Note:

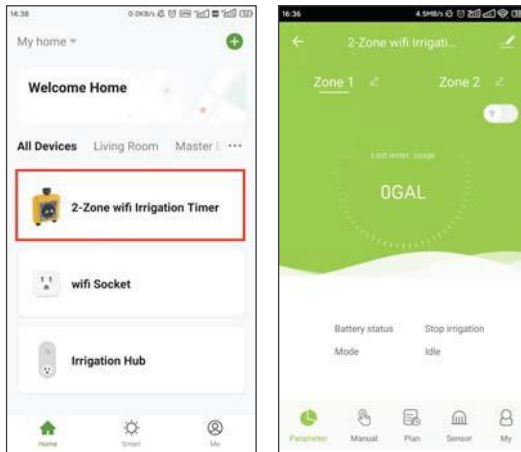
When testing, please keep away from the timer outlet to avoid being splashed and wet.

APP PROGRAMMING

APP HOME SCREEN



2- ZONE WIFI IRRIGATION TIMER



Tap the 2-Zone WiFi irrigation timer on the all devices list of APP home screen. It will display all the parameters and functions of the timer manually set on the APP.

Note:

The WiFi timer will form and perform the preset watering schedule after application set successfully, even if the phone or device loses network connection.

Device Parameter



Device & Third Party Control

Tap "📄" on the top right of the screen, you will enter the page for device information and third-party control.

Zone 1/Zone 2

Select Zone1 or Zone2, the screen will display the data of the corresponding Zone.

Unit Switch

Tap "F/C" switch, it will change the unit (F/C) of soil temperature and the unit (GAL/L) of water usage.

Last Water Usage

The WiFi water timer has built-in water flow meters, it will display the last water usage on the screen.

Soil Temperature & Moisture

Paired with the RAINPOINT WiFi soil sensor, it can also display soil temperature and moisture.

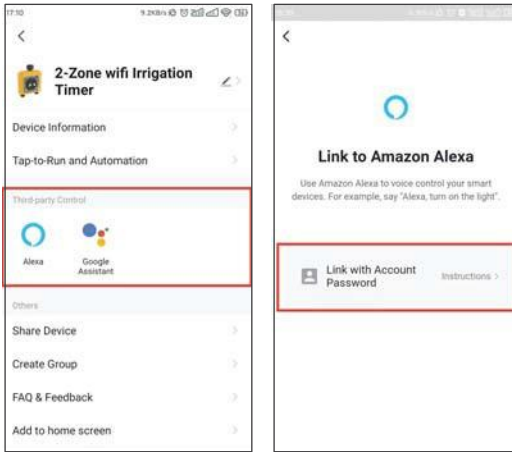
Note:

* WiFi soil sensor is sold separately.

* If the soil moisture is higher than the water prohibition level set on the soil sensor, the background color will change to red.

Working Status

Display the battery level of the timer, the current working mode and the time of the next watering.



How to get third-party control / voice control?

If you have an **Amazon Alexa** or **Google Assistant**, please tap the icon "🔗" in the upper right corner of the device page, select a third-party voice control device you own, then tap the operation guide, and follow the instructions to connect your WiFi water timer to the voice control device. After successfully connecting, you can control the WiFi water timer by voice.

Note:

The WiFi water timer can only perform simple voice commands, such as "turn on or turn off". If you have any questions or suggestions about this feature, please contact our US service hotline: **+1-833-3815659** or send an **email to: service@rainpintus.com**

Manual Watering



Zone 1/Zone 2

Select Zone1 or Zone2 for manual watering. Zone 1 controls the left valve of the timer. Zone 2 controls the right valve of the timer.

Manual Watering Duration

Move the hollow green circle on the dial to set the desired manual watering duration (0 ~ 60min).

Start Run

Tap ▶ to start watering and ⏸ to stop

Watering Plan & Manual Rain Delay



Zone 1/Zone 2

Select Zone1 or Zone2 for manual watering. Zone 1 controls the left valve of the timer. Zone 2 controls the right valve of the timer.

Watering Day Of The Week

Each plan has a specific watering day. The punctuation in a specific color on the day of the week indicates that there is a corresponding watering plan for that day.

Plan A / Plan B / Plan C

Each ZONE can set 3 different watering plans every day. Each watering plan can be set with different start time, duration and watering day (frequency). Slide the switch of the watering plan to turn it on or off.

Manual Rain Delay

Rain delay applies to rainy days or other weather that causes high soil moisture. During the rain delay, the timer stops watering. After the rain delay ends, the timer will be executed according to the next watering plan.

Each ZONE can set 24/48/72 hours of rain delay.

How to set the watering plan?

1. Tap Plan A/ Plan B/ Plan C on the plan screen of the 2-Zone WiFi irrigation timer.
2. Each watering plan has two watering modes: Irrigation Mode and Mist Mode.

These two modes do not refer to the difference in the water output of the timer, but the different settings of the watering frequency and duration.

Irrigation Mode: Watering at longer intervals

Mist Mode: Watering at shorter intervals



Irrigation Mode

3. Tap Irrigation Mode.
4. Use the **24H time** switch to toggle between 24hr and AM/PM time.
5. Tap **Stat time** to open the clock and set a stat time.
6. Tap **Duration(H:M)** to set a watering duration (from 0 hour 0 minute to 11 hours to 59 minutes).
7. Select the days to repeat watering every week as needed.
8. Save your settings.

For example:

The picture on the left shows that the WiFi water timer will water for 2 hours in irrigation mode. The start time is every Monday, Thursday and Saturday at 7:30 am.



Mist Mode

3. Tap Mist Mode
4. Use the 24H time switch to toggle between 24hr and AM/PM time.
5. Tap **Stat time** to open the clock and set a stat time.
6. Tap **Misting Period(H:M)** to set the overall duration of the misting program (from 0 hour 0 minute to 11 hours to 59 minutes).
7. Tap **Mist time** to set the duration for each misting.
8. Tap **Interval** to set the interval time between each misting.
9. Select the days to repeat watering every week as needed.
10. Save your settings.

For example:

The picture on the left shows the WiFi water timer will water for 59 seconds and then rest for 2 minutes in mist mode cyclically. The cycle lasts for 2 hours, starting at 7:30 in the morning every Wednesday, Friday and Sunday.

WiFi Soil Sensor & Water Flow Meter



WiFi Soil Sensor (sold separately, not included)

If you have a Rainpoint WiFi soil sensor, you can pair it with your Rainpoint WiFi water timer and WiFi hub. **Each zone can be paired with one WiFi soil sensor.** And the soil temperature and moisture data monitored by the soil sensor will be displayed on your Rainpoint APP.

The soil sensor can also control the watering schedule of the timer. When the soil moisture is higher than the water prohibition level set on the soil sensor, the timer automatically interrupts the watering plan and stops watering until the soil moisture decreases.



Water Flow Meter

Each zone of the WiFi water timer has built-in a water flow meter.

It will show you the daily water consumption in the last few days and help you quantify the daily water consumption to save water.

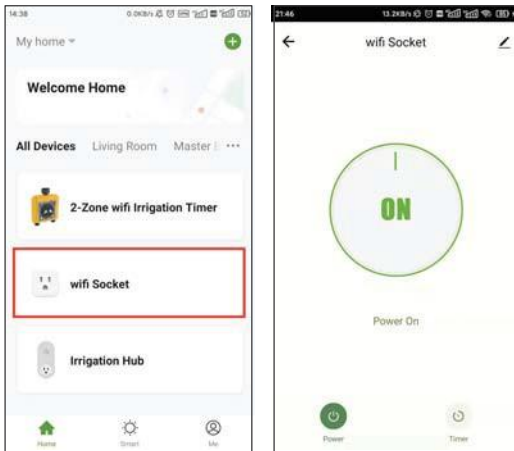
Note:

How to switch the unit of soil temperature and moisture and water flow meter?

Please tap the parameter screen and then tap "F/C" switch to toggle the unit.

WiFi SOCKET

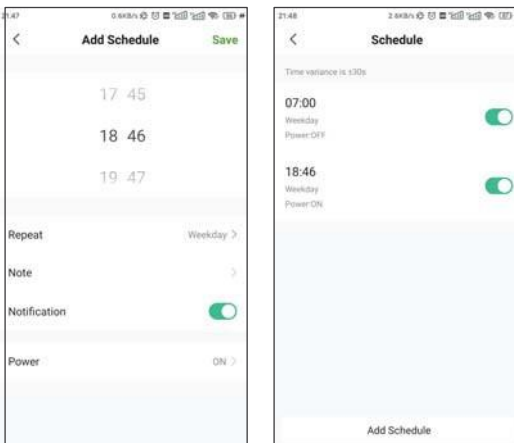
Manual Power ON/OFF



1. Tap the **WiFi Socket** on the all devices list of APP home screen.
2. Tap the **Power** to toggle the WiFi socket power on or off.

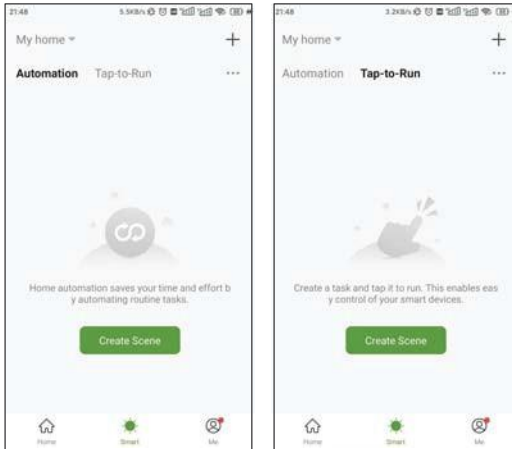
Note:

Each RainPoint WiFi hub can be used as a WiFi socket. **But, only when the WiFi timer is successfully paired with the WiFi hub, the WiFi socket device can be added to the APP.**



1. Tap the **Timer** on the WiFi Socket screen.
2. Tap the **Add Schedule** to setup a schedule for the WiFi Socket.
3. Use the **clock wheels** to set the desired switch time of day.
4. Tap **Repeat** to choose which days of the week to toggle the socket.
5. Tap **Note** to add a custom description to your schedule.
6. Toggle the **Notification** switch to receive alerts when the schedule is triggered.
7. Tap **Save** to set your schedule, or exit without saving.
8. The schedule of the WiFi socket will be displayed on the previous add schedule screen.

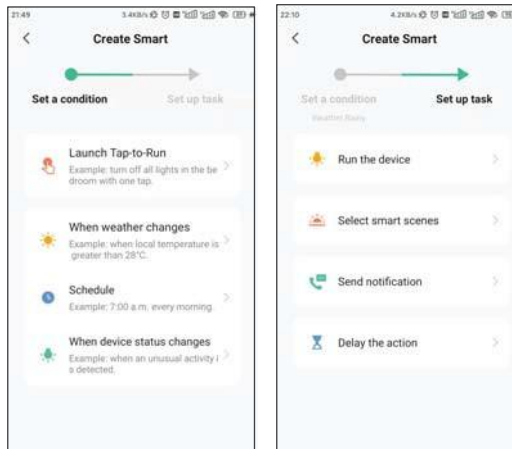
Aut. mati. n & Tap-t. -Run



Aut. mati. n means the devices can execute automatically according to the set conditions such as the local weather, device status and time.

For example, RAINPOINT APP can obtain the weather forecast information of your home location. When you set the conditions for immediately delaying the watering plan when it rains, the timer will automatically execute the watering delay when it rains in your local area. When you travel, you don't need to worry about whether the weather at home is raining.

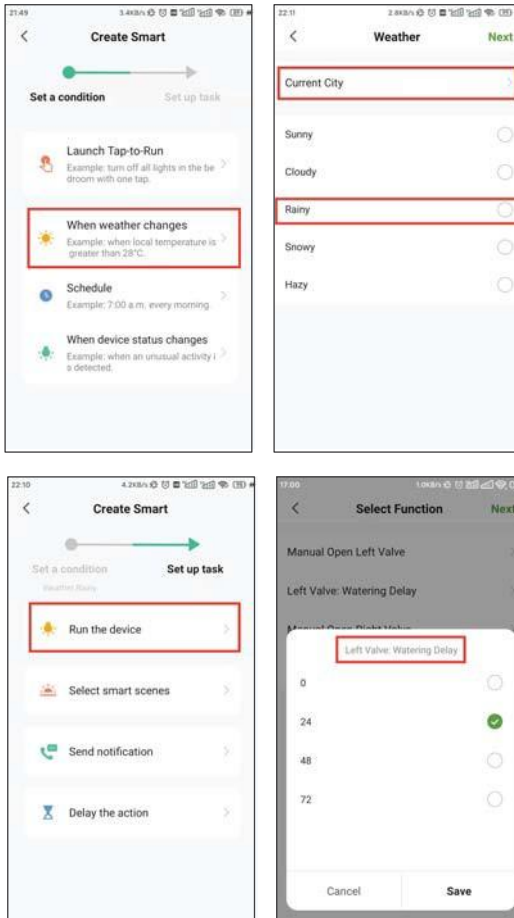
Tap-t. -Run means you can control multiple devices and plans with one tap.



3 Steps To Set Aut. mati. n Or Tap-T. -Run

1. **Set a c. nditi. n:** According to your needs, set the conditions for automation or tap-to-run.
2. **Set tasks:** Set the tasks that the device needs to perform when the conditions are met
3. **Save the settings:** Please remember to save all the settings. The device will automatically execute according to what you set.

How to set the automatic rain delay?



1. Tap **Smart** at the bottom of the APP home screen.
2. Select **Automatic** and tap **Create Scene**.
3. Set a condition **when the weather changes to rain**.

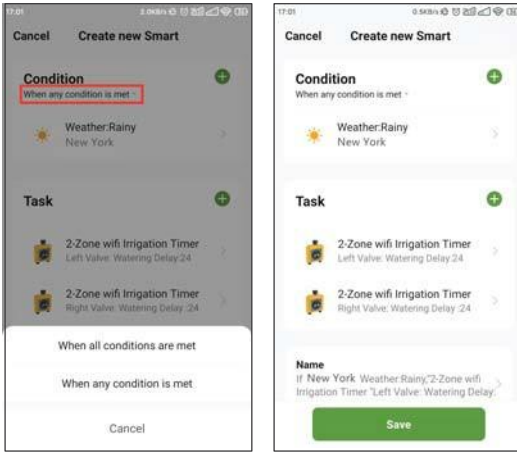
Note:

Please accurately locate the city where your home is located. The APP will automatically obtain weather forecast data based on the city you locate. When the weather forecast turns to rain, the conditions for execution will be triggered.

4. Tap **Run the device** to set up a task about device operation.
5. Select **2-Zone WiFi Irrigation Timer**
6. Set the watering delay time of the left valve first, and then set the watering delay time of the right valve.

Note:

For the task performed by the device, select **Run the device**

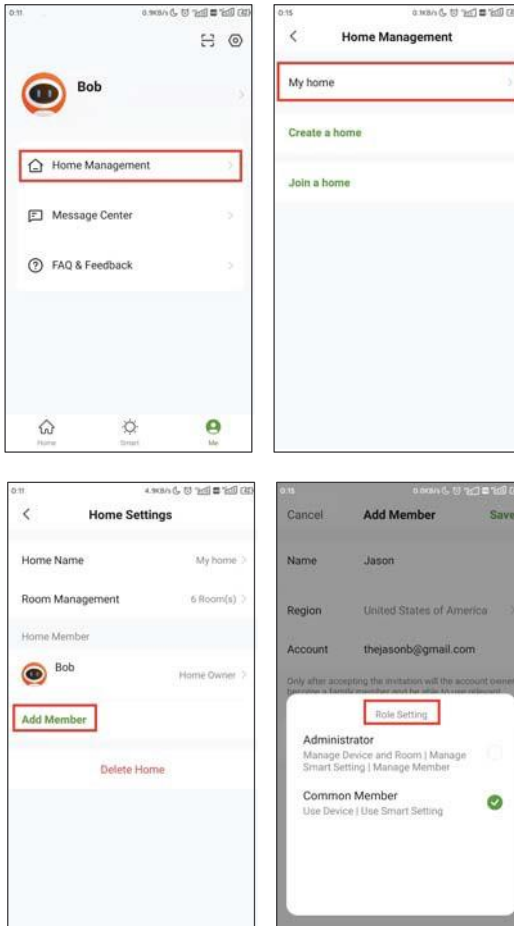


7. Select the trigger condition of your condition to be when **all conditions are met** or when **any one of the conditions is met**. If there is only one trigger condition, there is no need to set it here.
8. Check your execution conditions and tasks.
 9. Save your settings.

For example:

The picture on the left shows that when it rains in New York, the left and right valves of the 2-Zone WiFi irrigation timer will be automatically closed, and watering will be delayed for 24 hours.

SMART AUTOMATION



Rainpoint supports adding family members and sharing your home device to achieve co-management the home irrigation system with your family.

1. Tap **Me** at the bottom of the APP home screen.
2. Select **Home Management**. You can set the current home or create a home or join another home.

3. Set your home name, room management and home location.

Note:

Home location is related to the weather forecast information obtained by the system.

4. Add **Home Member** and set the corresponding **usage permissions** for the members.

RESET THE DEVICE

How to reset the WiFi Hub ?

- Step 1. Power OFF or Remove the WiFi Hub from the power source.
- Step 2. After 10 seconds, power on or plug the WiFi hub to the power source.
- Step 3. Press and hold the middle button on the WiFi hub without releasing the button **until the indicator light quickly flashed (2 times per second)**, then the WiFi hub is restored to pair mode.

Search the link below to visit the WiFi Hub resetting video
<https://rainpointus.com/pages/playlist>

How to reset the WiFi timer ?

- Step 1. Remove all batteries from the battery compartment.
- Step 2. After 10 seconds, insert 4 fresh AA Alkaline batteries into the battery compartment of the timer.
- Step 3. Press and hold the left button on the timer without releasing the button **until the two indicator lights quickly flashed (2 times per second)** at the same time, then the WiFi timer is restored to pair mode.

Search the link below to visit the WiFi Timer resetting video
<https://rainpointus.com/pages/playlist>

Please scan the QR code below to get the resetting video quickly.



TROUBLESHOOTING

Problem	Possible Cause	Possible Solution
Can't turn on/off the valve	<ul style="list-style-type: none"> • Low battery • Impurities in water inlet • Unstable network or delayed response. 	<ul style="list-style-type: none"> • Replace fresh batteries • Regularly clean the filter pot of impurities to avoid disruptions in use. • Wait a while and try again.
Inaccurate water flow meter	<ul style="list-style-type: none"> • Inaccurate statistics due to tilted mounting angle. • Low or erratic water pressure from the tap 	<ul style="list-style-type: none"> • The water timer needs to be installed perpendicular to the ground and it is recommended that it is not installed at an angle to avoid affecting the water count. • Normal error values for water counts $\pm 5\%$
Timer won't connect	<ul style="list-style-type: none"> • Impurities in water inlet filter. • Rainfall delay parameters are set. • Setting the plan for channel 1 to channel 2 by mistake. • In a low power state, the timer goes into a low power protection state and does not execute the schedule. 	<ul style="list-style-type: none"> • Check that the WIFI network environment is working. • Close to hubs and routers when connected to irrigation timers. • Re-pair the timer: Press and hold the left button of the timer until the left and right indicators flash rapidly at the same time to indicate pairing. (Or remove the device from the homepage and reconnect)
Hub cannot connect	<ul style="list-style-type: none"> • Not using 2.4GHZ WIFI. • Incorrect WIFI password. • Hub not in pairing state. 	<ul style="list-style-type: none"> • Confirm 2.4GHZ WIFI connection. • Confirm that the WIFI password has been entered correctly. • Press and hold the middle button and inset it into the socket again • without releasing the button, do not release the button during this time. After a few seconds the indicator light will come on for a while and then start flashing rapidly. This means that pairing has been entered.
<p>If your Rainpoint product does not operate properly after trying the troubleshooting steps, please contact us by phone or email : 1-833-3815659 (US Hotline) service@rainpointus.com</p>		

The meaning of LED light

LED indicator color of TTV203WRF WiFi water timer

1. **Power reset:** The **red and white** lights flash alternately 4 times when the machine is turned on.
2. **Restoring factory settings:** Press and hold the timer button while turning on the timer, release the button after the **red** light flashes, and the timer will enter the factory reset state.
3. **Irrigation status:** The **white** light flashes for 3 seconds and lights for 200mS, indicating that the timer is in irrigation status.
4. **Water leakage alarm:** The **red** light flashes alternately for 1 second.
5. **Pairing state:** The **white** light flashes quickly (2 times per second) to indicate that the timer enters the timing pairing status, and waits for the 60-second pairing timeout to end.
6. **Low battery state:** The **red** light flashes for 3 seconds, and 200mS on indicates that the battery is in a low voltage state.

Power indicator color of TWG004FRF WiFi Hub

1. **Smart pairing status:** Blue LED light flashing fast(2 times per second)
2. **AP pairing status:** Blue LED light slow flashing
3. **Socket function open:** Blue LED light is always on
4. **Socket function off:** No light

The meaning of App background color



Green means everything works well.

Red means the soil moisture is too high over the set level.

FCC Statement

This device complies with part 15 of the FCC Rules. Operation is subject to the following two conditions: (1) This device may not cause harmful interference, and (2) this device must accept any interference received, including interference that may cause undesired operation.

This equipment has been tested and found to comply with the limits for a Class B digital device, pursuant to part 15 of the FCC Rules. These limits are designed to provide reasonable protection against harmful interference in a residential installation. This equipment generates, uses and can radiate radio frequency energy and, if not installed and used in accordance with the instructions, may cause harmful interference to radio communications. However, there is no guarantee that interference will not occur in a particular installation. If this equipment does cause harmful interference to radio or television reception, which can be determined by turning the equipment off and on, the user is encouraged to try to correct the interference by one or more of the following measures:

- Reorient or relocate the receiving antenna.
- Increase the separation between the equipment and receiver.
- Connect the equipment into an outlet on a circuit different from that to which the receiver is connected.
- Consult the dealer or an experienced radio/TV technician for help.

Caution: Any changes or modifications not expressly approved by the party responsible for compliance could void the user's authority to operate the equipment.

This equipment complies with FCC radiation exposure limits set forth for an uncontrolled environment. This transmitter must not be co-located or operating in conjunction with any other antenna or transmitter.

WARRANTY

Rainpoint provides a 1-year limited warranty on this product against manufacturing defects in materials and workmanship.

CUSTOMER SUPPORT

If you find it difficult to set up and want to watch the setting tutorial video, please subscribe to our channel: RainPoint on YouTube.



Please scan the QR code to visit the RainPoint channel on YouTube quickly.

If the app and the user manual don't have what you're looking for, and you need some help, please prepare the Model NO. and LOT NO. of your device and contact us before returning the Rainpoint to the store.

US Free H. tline: 1-833-3815659

Email: sevice@rainpointus.com

M. del NO.: xxxxxxxxxx(On the timer label)

LOT NO.: xxxxxxxxxxxxxxxx(On the timer label)