

# WIFI antenna specification

Manufacturer: Espressif Systems (Shanghai) Co., Ltd.

Address: Suite 204, Block 2, 690 Bibo Road, Zhang Jiang Hi-Tech Park, Shanghai

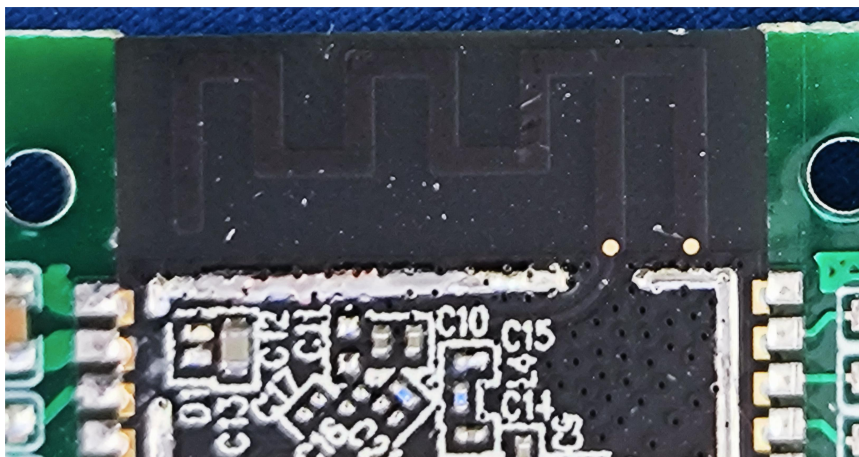
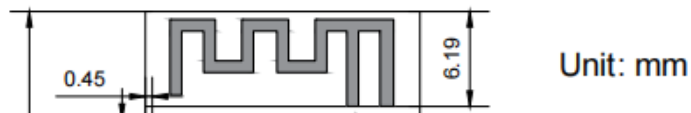
## Electrical Specifications:

Frequency Band	2.4G/5G	The Antenna Material	PCBA
Nominal Impedance	50 $\Omega$	Antenna Connection Mode	in PCBA
VSWR	$\leq 5.0$	Working Temperature	-40°C ~ +85°C
Peak Gain	2.4-2.5GHz: 0.89dBi	Keep The Temperature	+19°C ~ +23°C
		Polarization	Linear Polarization

## Test Conditions And Methods:

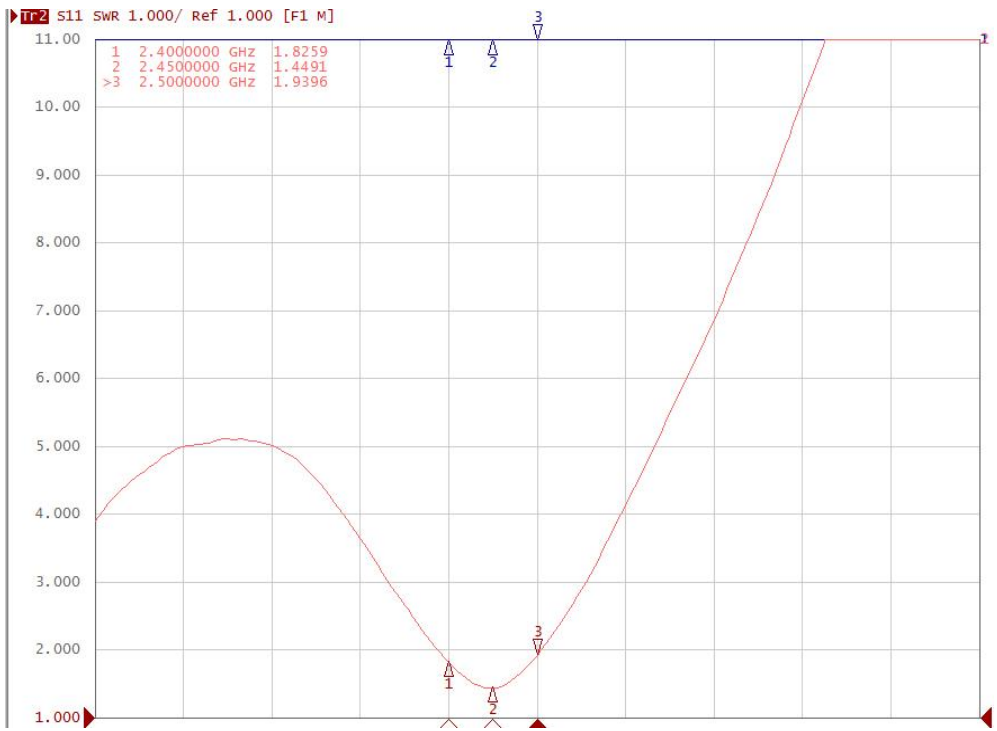
Test Instruments	Test Method	Test Result
7*4*3 microwave darkroom E5071B network analyzer	<ol style="list-style-type: none"> <li>Assemble the antenna to be tested on the prototype.</li> <li>Put the prototype on the test fixture in a dark room, and conduct comprehensive test with it. Instrument/analyzer connection is established.</li> <li>Test antenna passive data with test software.</li> </ol>	Refer to the Test Report

## Product drawings



### Passive performance test parameters

Frequency (MHz)	2400	2450	2500
VSWR	1.82	1.44	1.93



antenna passive data:

Freq (MHz)	Effi (%)	Gain (dBi)
2400	42.71	0.66
2410	43.28	0.67
2420	44.98	0.89
2430	45.46	0.77
2440	45.2	0.69
2450	44.54	0.59
2460	44.34	0.02
2470	44.6	0.17
2480	42.11	-0.15
2490	41.32	0.28
2500	41.66	-0.56

Directional diagram

