

IA.0263.LB.3FI (PRO-WIFI/GPS)

Antenna Specification

1. Application:

This application shall apply for antenna unit which shall be used such as automotive, conventional communications, smart home, etc..

1. Electrical Specification:

Those specifications were specially defined for customer's model, and all characteristics were measured under the model's handset testing jig .

2-1. Frequency Band:

Frequency Band	MHz
GPS/WIFI2.4/5.8G	1575.42/2400-2500/5150-5850

2-2. Impedance

50 ohm nominal


2-3. VSWR

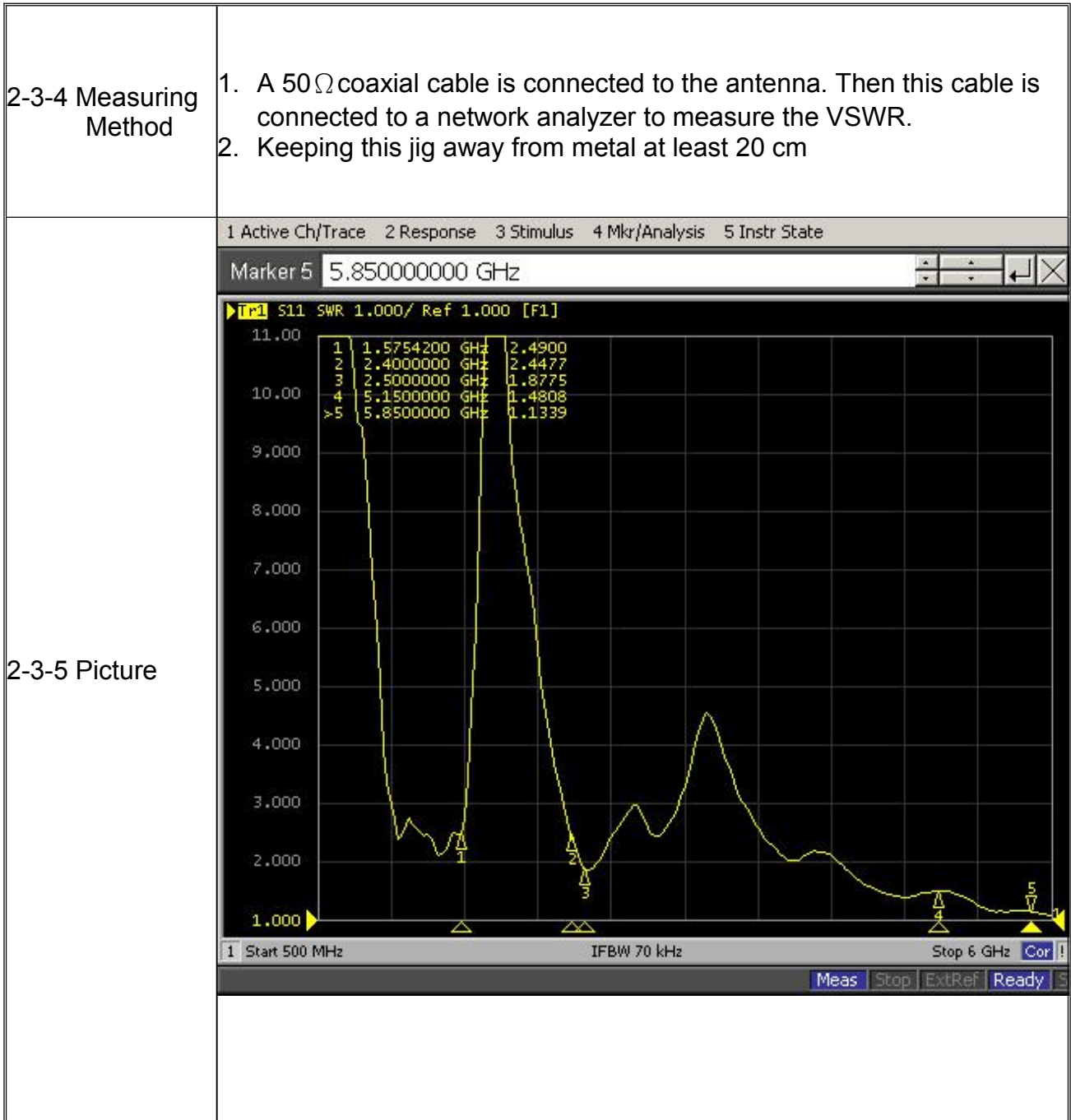
2-3-1.Measurement frequency points and VSWR value

Frequency Band(MHz)	1575.42	2400	2500	5150	5850
2-3-3. Typical Value:	2.4	2.4	1.8	1.4	1.1

2-3-2. VSWR

Frequency Band(MHz)	1575.42	2400	2500	5150	5850
2-3-3. Typical Value:	≤2	≤2	≤2	≤2	≤2

UNLESS OTHER SPECIFIED TOLERANCES ON :			KINGRF TECHNOLOGY CO., LTD.
X=±	X.X=±		
ANGLES=±		HOLEDIA=±	
SCALE :	UNIT : mm	THIS DRAWINGS AND SPECIFICATIONS ARE THE PROPERTY OF KINGRF TECHNOLOGY CO.,LTD.AND SHALL NOT BE REPRODUCED OR USED AS THE BASIS FOR THE MANUFACTURE OR SALE OF APPARATUS OR DEVICES WITHOUT PERMISSION	
DRAWN BY: LI	CHECKED BY: YS		
DESIGNED BY: De wen	APPROVED BY: YS		
TITLE : IA.0263.LB.3FI Antenna Specification			SPEC REV. P0



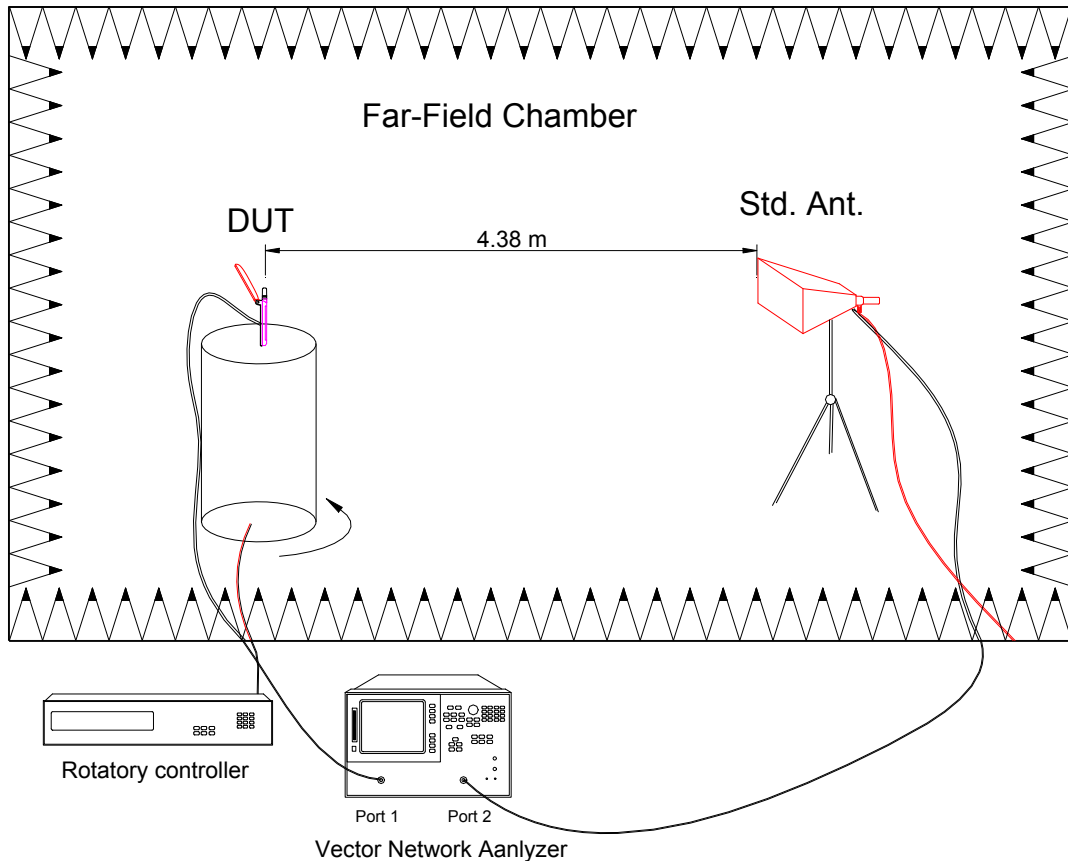
UNLESS OTHER SPECIFIED TOLERANCES ON : X=± X.X=± X.XX=± ANGLES=± HOLEDIA=±		KINGRF TECHNOLOGY CO., LTD.
SCALE :	UNIT : mm	
DRAWN BY: LI	CHECKED BY: YS	THIS DRAWINGS AND SPECIFICATIONS ARE THE PROPERTY OF KINGRF TECHNOLOGY CO.,LTD.AND SHALL NOT BE REPRODUCED OR USED AS THE BASIS FOR THE MANUFACTURE OR SALE OF APPARATUS OR DEVICES WITHOUT PERMISSION
DESIGNED BY: De wen	APPROVED BY: YS	
TITLE : IA.0263.LB.3FI Antenna Specification		SPEC REV. P0

2-4. Efficiency and Gain

4-5.1 Measure method

1. Using a low loss coaxial cable to link a standard handset jig
2. Fixed this handset jig on chamber's rotator plane
3. Linking jig into network analyzer port and using a probing horn antenna to collect data.
4. Using another standard gain horn antenna to calibrated those data

4-5.2 Chamber definition



1. An anechoic chamber (7mx4mx3m) which satisfied far-field condition was applied to avoid multi-path effect
2. The quite room region is 40cmx40cmx40cm at the center of rotator
3. The distance between DUT and standard antenna is 4.38 m
4. Probing antenna (9120D horn antenna) and standard gain horn antenna (BBHA9120 LPF 700MHz ~6GHz)

UNLESS OTHER SPECIFIED TOLERANCES ON :			KINGRF TECHNOLOGY CO., LTD.
$X = \pm$	$X.X = \pm$		
ANGLES = \pm		HOLEDIA = \pm	
SCALE :	UNIT : mm	THIS DRAWINGS AND SPECIFICATIONS ARE THE PROPERTY OF KINGRF TECHNOLOGY CO.,LTD.AND SHALL NOT BE REPRODUCED OR USED AS THE BASIS FOR THE MANUFACTURE OR SALE OF APPARATUS OR DEVICES WITHOUT PERMISSION	
DRAWN BY: LI	CHECKED BY: YS		
DESIGNED BY: De wen	APPROVED BY: YS		
TITLE : IA.0263.LB.3FI Antenna Specification			SPEC REV. P0

2-4-1 Efficiency and Gain

Antenna Type: **internal antenna with ipex connector**

Freq (MHz)	Effi (%)	Effi (dB)	Gain (dBi)
1559	38.57	-7.31	0.95
1560	38.12	-7.42	0.81
1561	37.33	-7.61	0.63
1562	36.7	-7.77	0.51
1563	36.26	-7.89	0.45


BD

1573	39.34	-7.14	1.57
1574	39.47	-7.11	1.52
1575	39.42	-7.12	1.42
1576	39.17	-7.17	1.29
1577	38.89	-7.24	1.15

GPS

Freq (MHz)	Effi (%)	Effi (dB)	Gain (dBi)
2400	41.44	-6.69	0.35
2410	43.44	-6.3	0.16
2420	45.73	-5.9	0.26
2430	39.47	-5.31	0.92
2440	43.16	-4.79	0.84
2450	39.39	-5.32	0.18
2460	44.21	-4.66	0.75
2470	44.53	-4.62	0.9
2480	45.9	-4.45	0.98
2490	47.68	-4.24	1.61
2500	44.08	-4.68	1.58

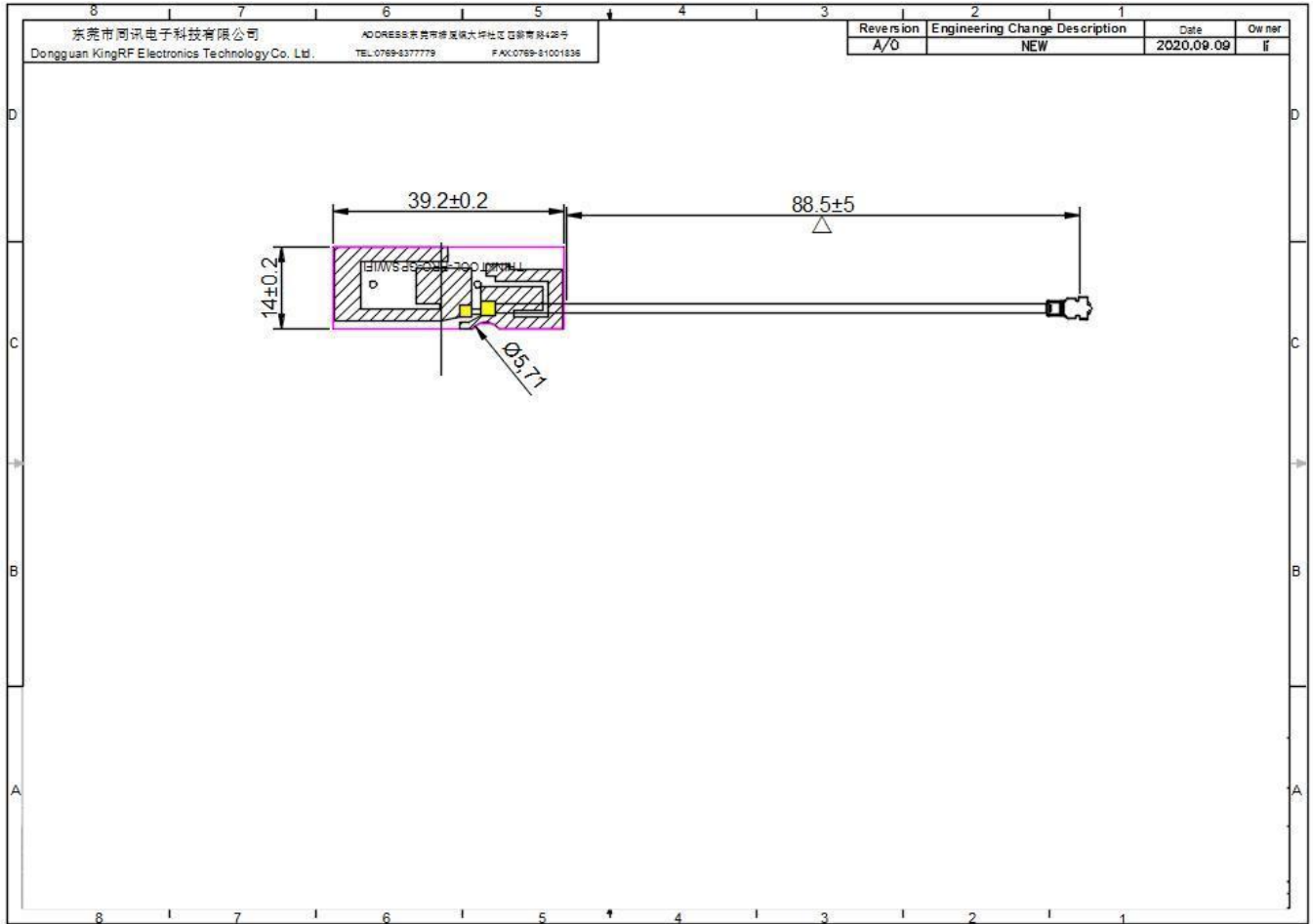
Freq (MHz)	Effi (%)	Effi (dB)	Gain (dBi)
5150	45.38	-3.43	3.68
5200	42.55	-3.71	3.06
5250	42.99	-3.67	3.01
5300	49.52	-3.05	3.35
5350	49.87	-3.02	3.07
5400	58.25	-2.35	3.85
5450	68.67	-1.63	4.29
5500	55.86	-2.53	3.4
5550	50.25	-2.99	2.53
5600	44.5	-3.52	2.27
5650	69.06	-1.61	4.26
5700	71.64	-1.45	4.93
5750	51.33	-2.9	4.63
5800	63.61	-1.96	5.08
5850	61.71	-2.1	5.46

UNLESS OTHER SPECIFIED TOLERANCES ON : X=± X.X=± X.XX=± ANGLES=± HOLEDIA=±			KINGRF TECHNOLOGY CO., LTD.
SCALE :	UNIT : mm		
DRAWN BY: LI	CHECKED BY: YS	THIS DRAWINGS AND SPECIFICATIONS ARE THE PROPERTY OF KINGRF TECHNOLOGY CO.,LTD.AND SHALL NOT BE REPRODUCED OR USED AS THE BASIS FOR THE MANUFACTURE OR SALE OF APPARATUS OR DEVICES WITHOUT PERMISSION	
DESIGNED BY: De wen	APPROVED BY: YS		
TITLE : IA.0263.LB.3FI Antenna Specification			SPEC REV. P0

3. Mechanical Specification:

3-1. Mechanical Configuration (Unit: mm)


The appearance of the antenna is according to drawing



3-2. Connector appearance:

IPEX

UNLESS OTHER SPECIFIED TOLERANCES ON : $X = \pm$ $X.X = \pm$ $X.XX = \pm$ ANGLES = \pm HOLEDIA = \pm			KINGRF TECHNOLOGY CO., LTD.
SCALE :	UNIT : mm		
DRAWN BY: LI	CHECKED BY: YS	THIS DRAWINGS AND SPECIFICATIONS ARE THE PROPERTY OF KINGRF TECHNOLOGY CO.,LTD.AND SHALL NOT BE REPRODUCED OR USED AS THE BASIS FOR THE MANUFACTURE OR SALE OF APPARATUS OR DEVICES WITHOUT PERMISSION	
DESIGNED BY: De wen	APPROVED BY: YS		
TITLE : IA.0263.LB.3FI Antenna Specification			SPEC REV. P0

UNLESS OTHER SPECIFIED TOLERANCES ON : X=± X.X=± X.XX=± ANGLES=± HOLEDIA=±			KINGRF TECHNOLOGY CO., LTD.
SCALE :	UNIT : mm		
DRAWN BY: LI	CHECKED BY: YS		
DESIGNED BY: De wen	APPROVED BY: YS		
TITLE : IA.0263.LB.3FI Antenna Specification			SPEC REV.
			P0