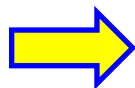
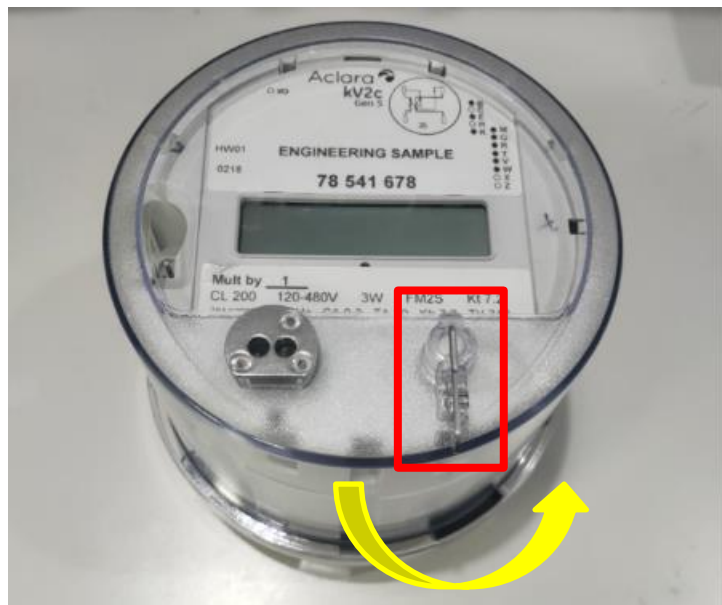


AETHEROS_KV2C _ASSEMBLY SOP

2022.07.22 Jerry Lee

Remove Meter Bezel (outer clear cover)

Remove outer clear cover from meter base, rotate the clear cover to ward anticlockwise direction (as the below yellow arrow shown)

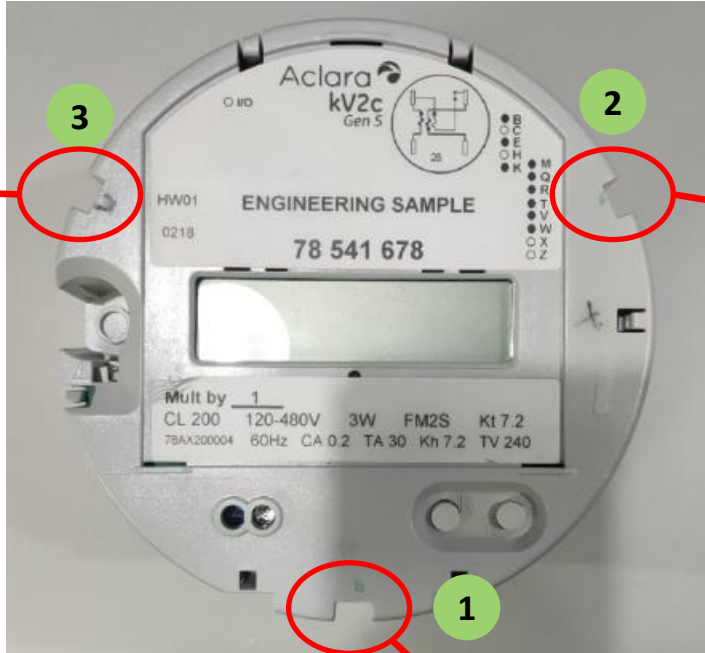


Remove Meter Cover (Inner grey cover)

1. Remove the inner grey cover from meter base, press in the meter base clip by tool (in the order 1→2→3)
2. The clips of the meter base will be separated from the meter cover hole and the grey cover can be removed.



Clip structure



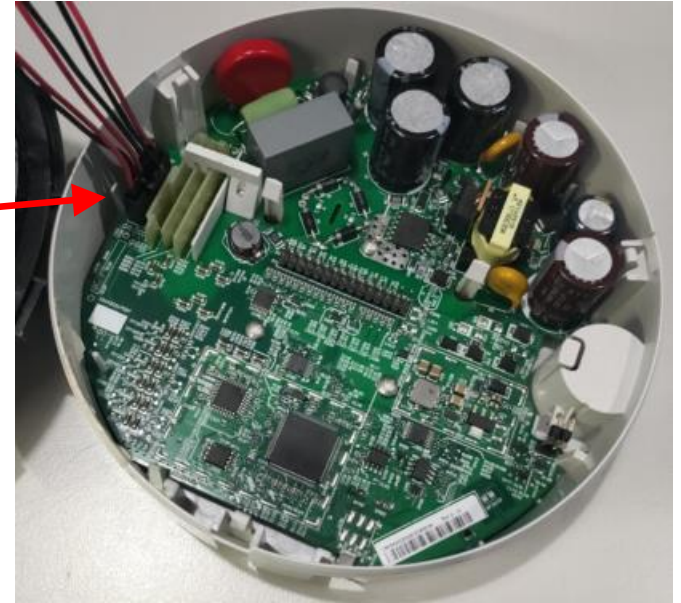
Flathead screwdriver



Clip structure

Remove Wire connector

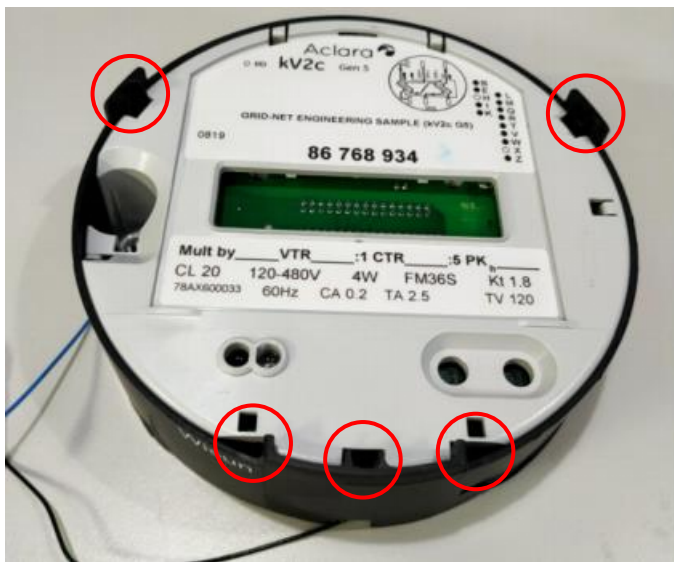
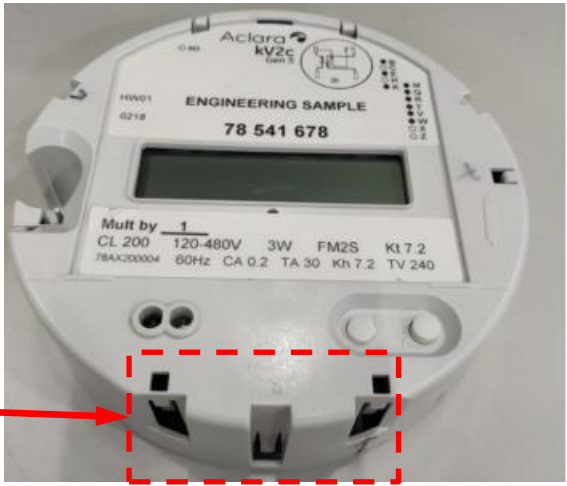
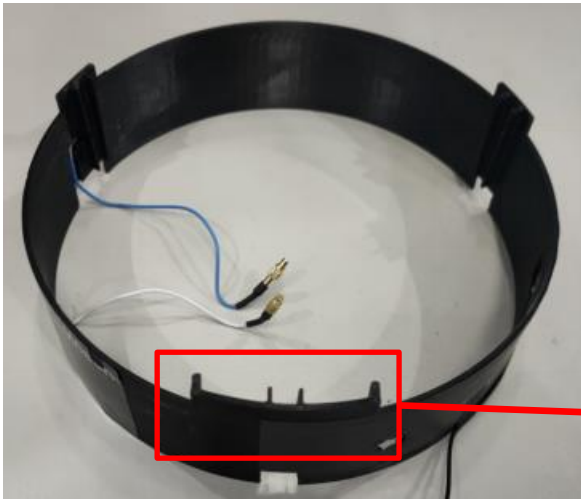
Remove wire connector on motherboard (Red arrow)



Antenna Holder Module & Meter cover

1415-09JC000 QTY : 1
3 IN 1 KV2C ANTENNA

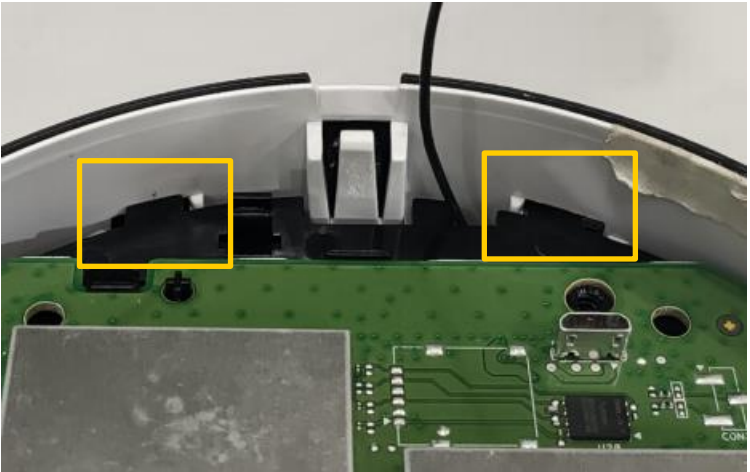
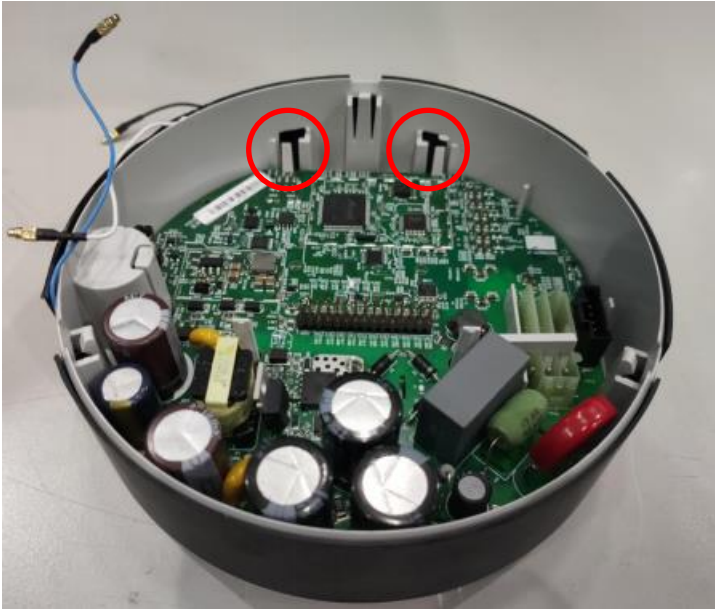
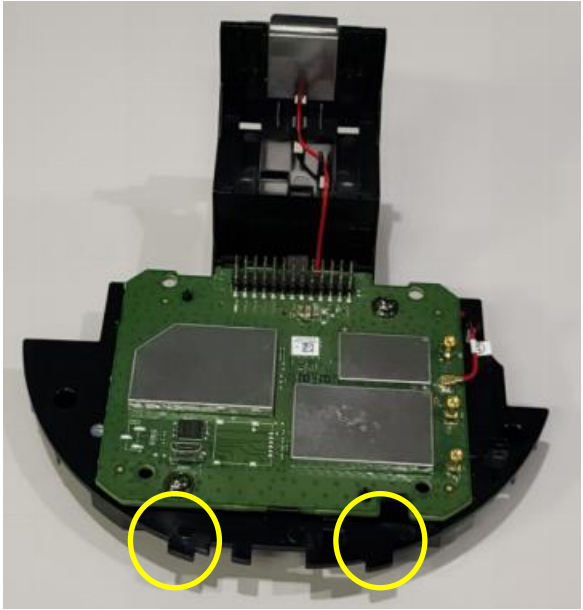
1. Put the antenna holder module insert to meter cover



The five positioning feature on the antenna holder (Red circle)

PCB Holder module & Meter cover assembly-1

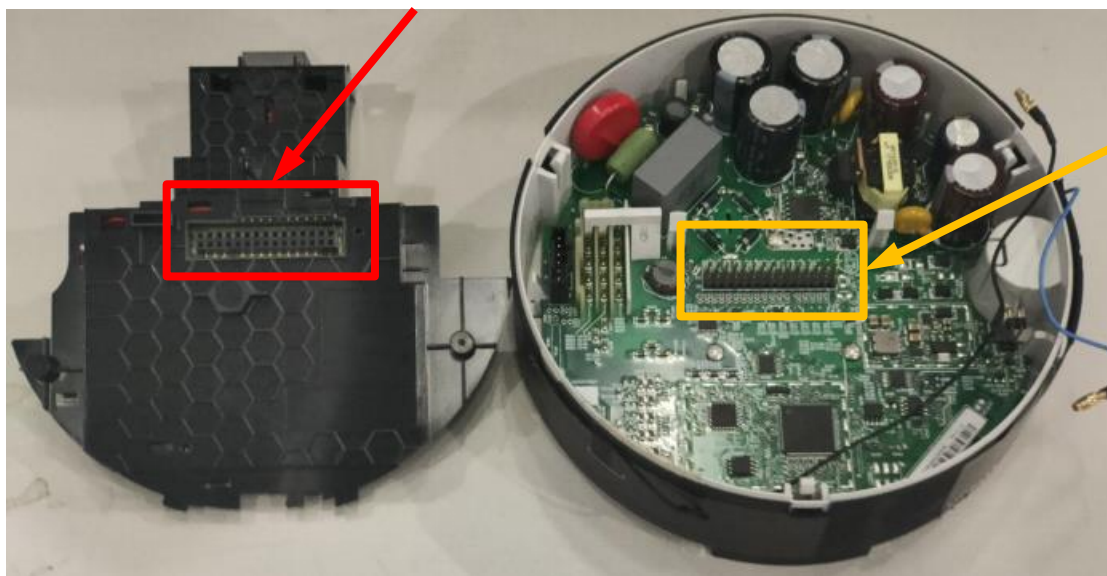
1. Holder module structures (Yellow circle) insert to meter cover holes (Red circle).



PCB Holder module & Meter cover assembly-2

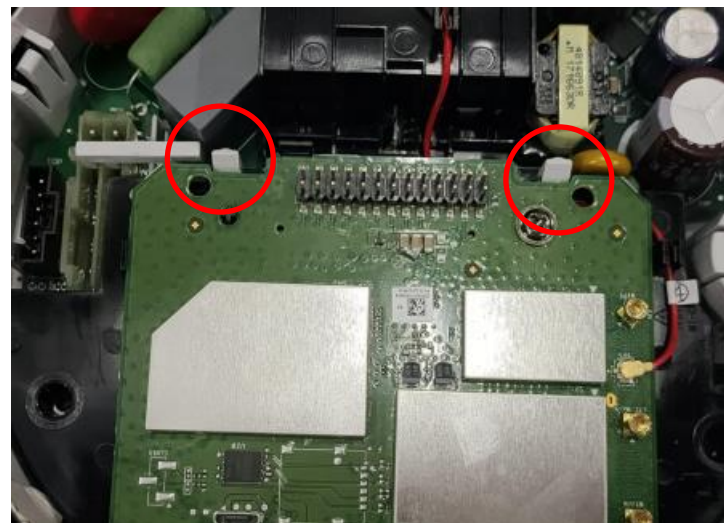
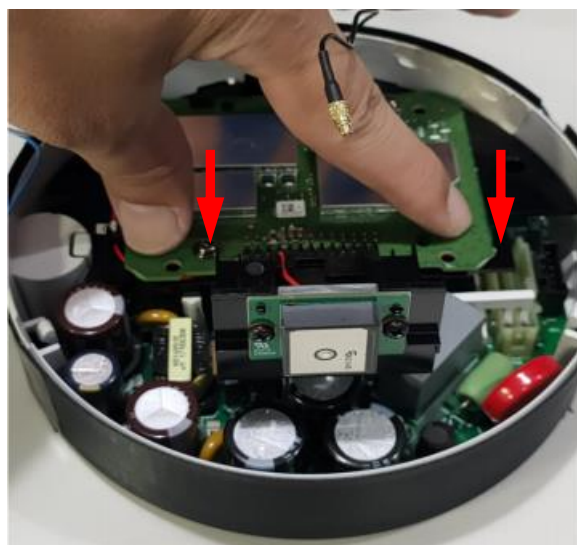
Holder module motherboard_30 pin connector

Meter Motherboard 30 pin header



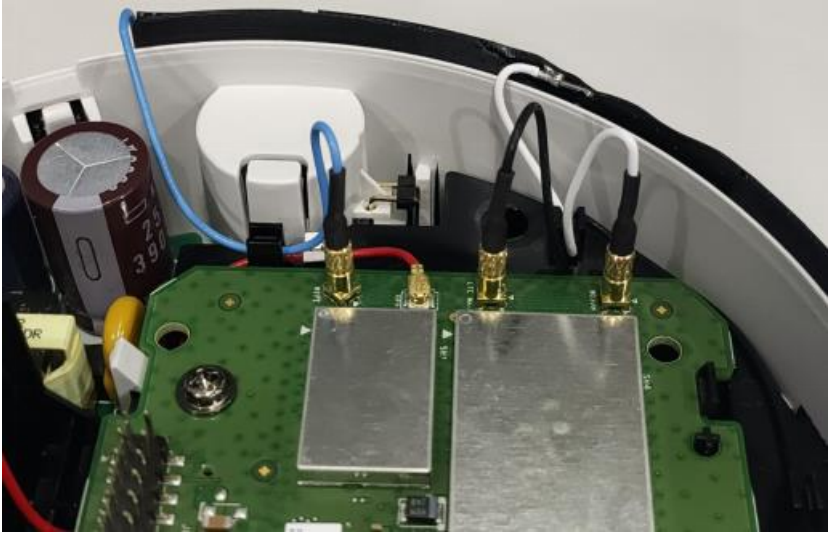
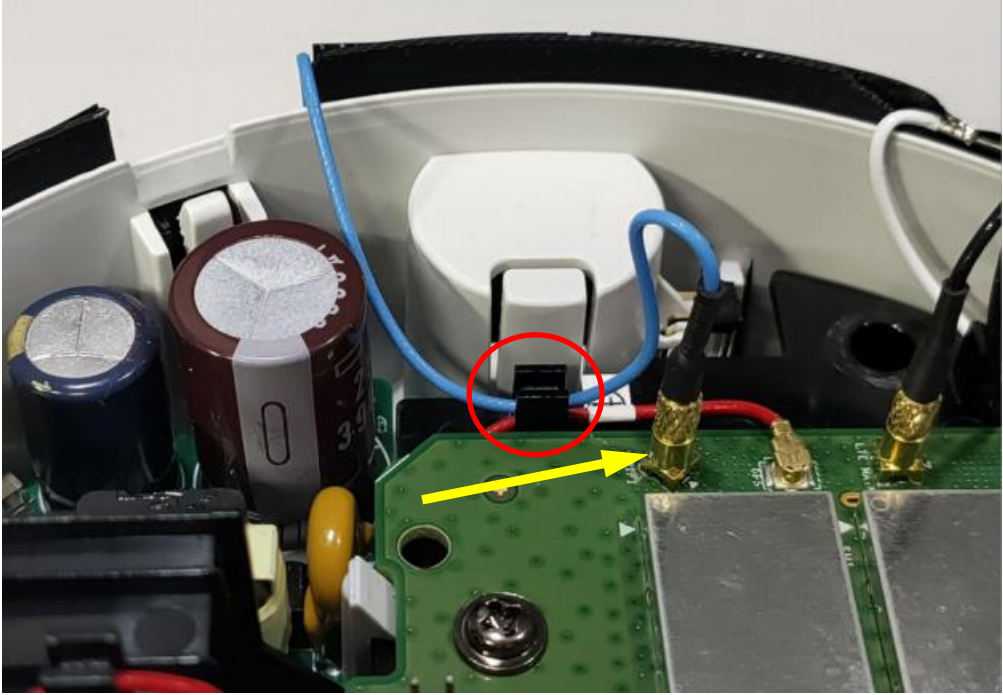
1. Press the motherboard of holder to meter motherboard (Red arrow)

2. Lock the holder module by meter clips.(Red circle)



Wifi cable routing & assembly

1. Wifi cable(Blue) into the holder clip(Red circle), and cable insert the item5 MMCX connector(Yellow arrow) cable routing as below.

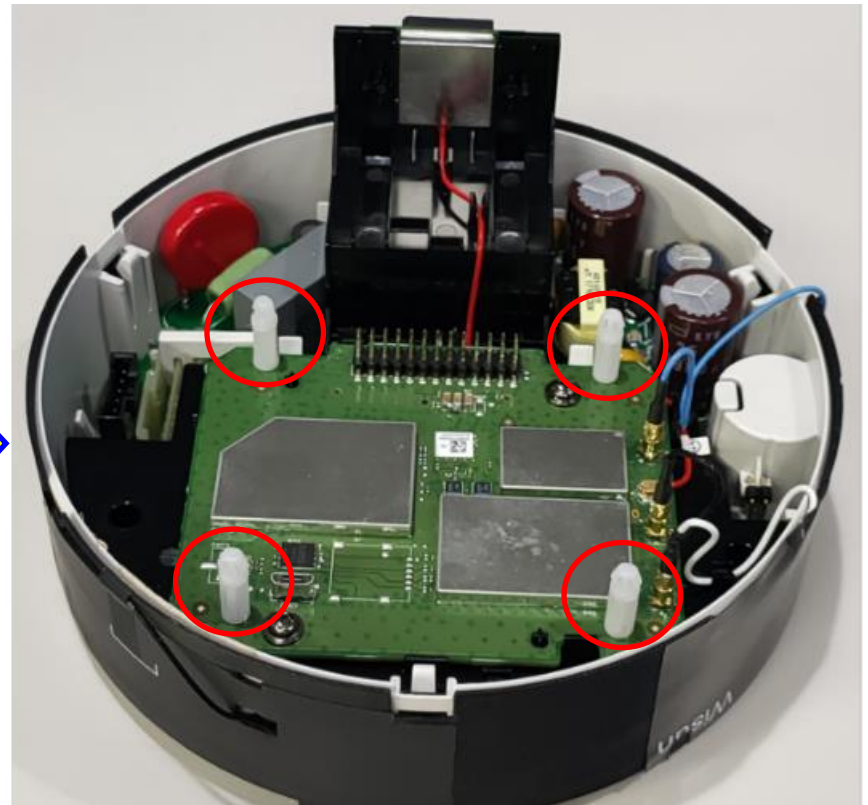
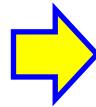
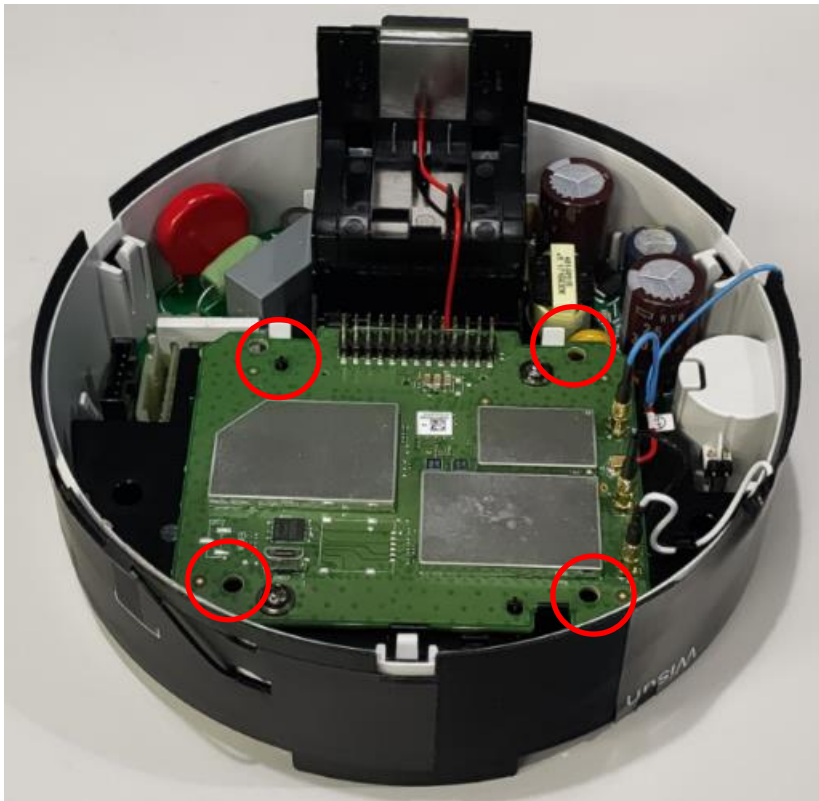


Spacer support & PCBA assembly

SPACER SUPPORT QTY : 4

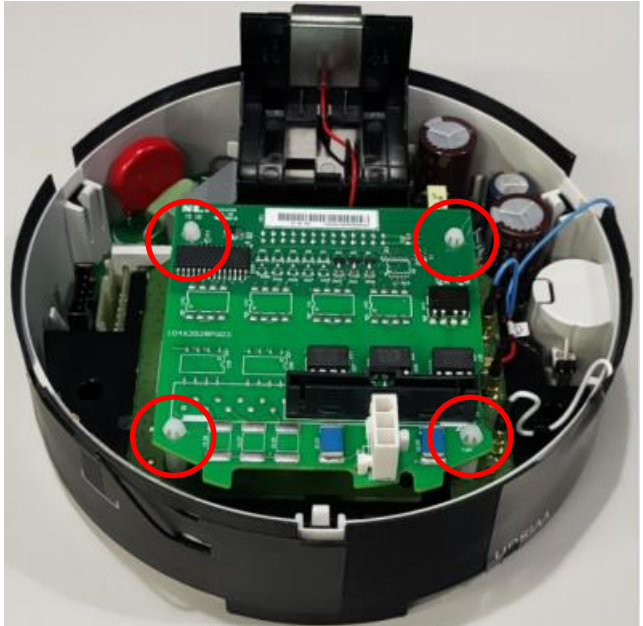
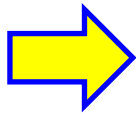
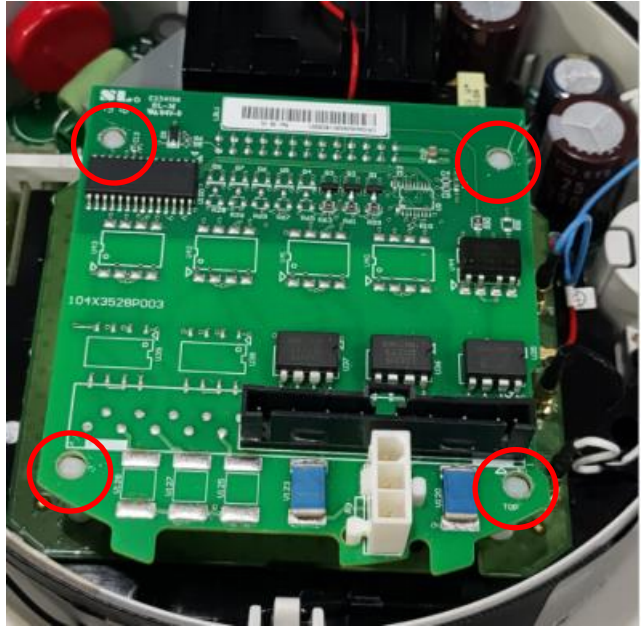


1. The spacer support insert to PCBA on th hole.(Red circle)



KYZ Board & PCBA assembly

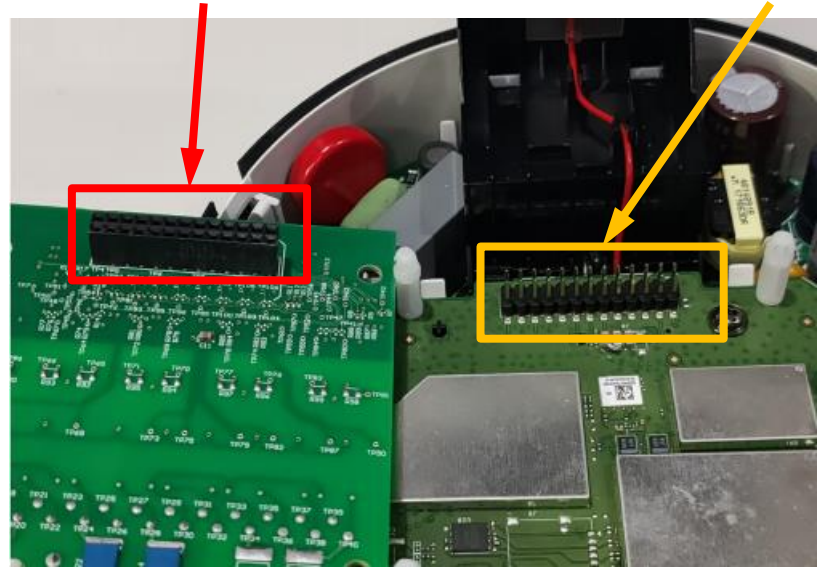
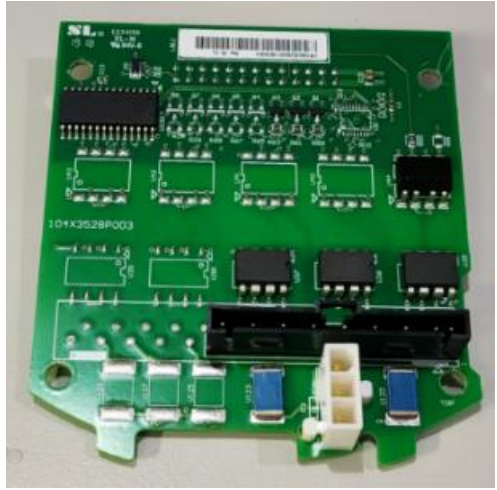
1. The KYZ board insert and press to spacer support. (Red circle)
2. KYZ board 26 pin connector insert to 26 pin header



KYZ board_26 pin connector

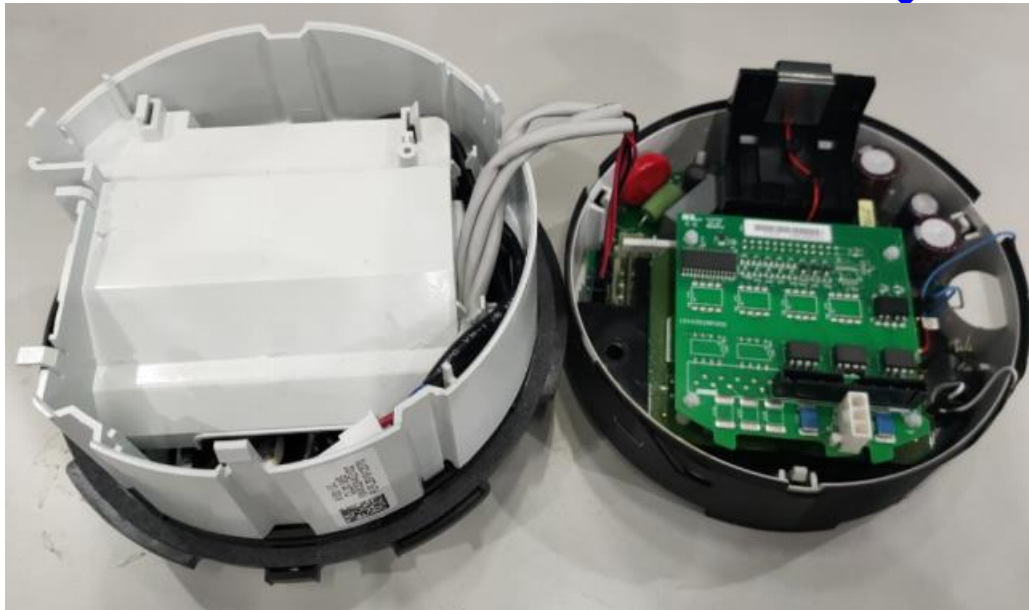
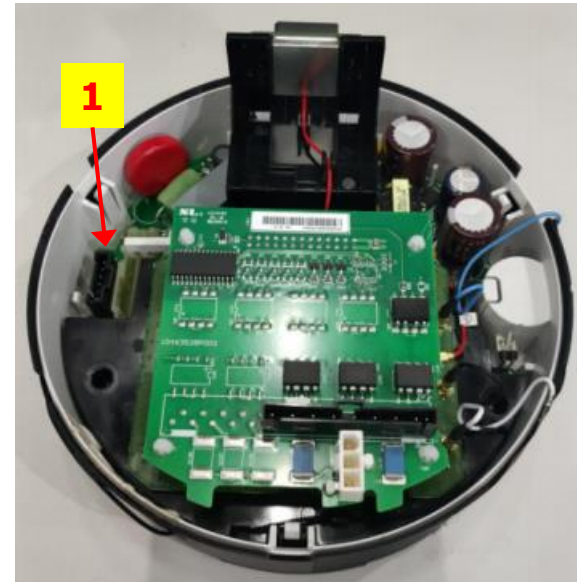
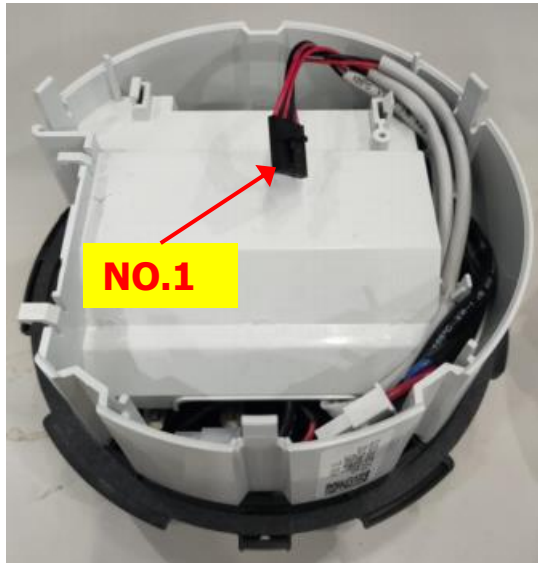
Motherboard 26 pin header

KYZ BOARD QTY : 1



Reassemble Meter cables

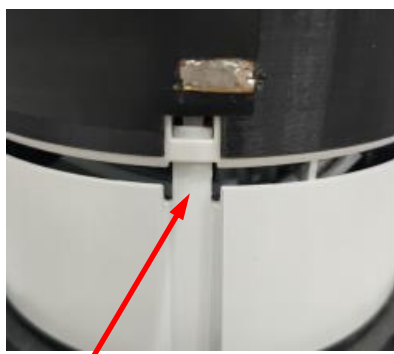
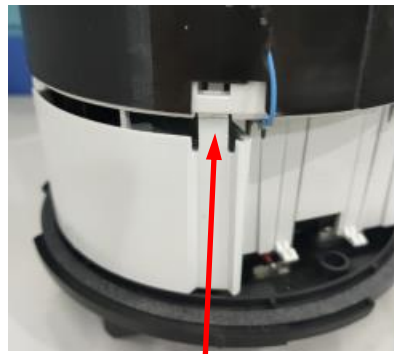
1. Reassemble meter cables, insert the cable into meter motherboard's connector
2. Meter base wire(NO.1) insert to motherboard connector (itme1)



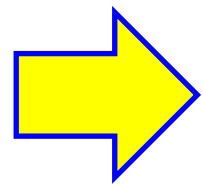
Reassemble Meter Cover to Meter Base

Reassemble Meter's inner grey cover to Meter Base :

1. Cover the inner grey cover on meter base and meter base clips align with meter cover holes



2. Press inner meter cover to meter base



Reassemble Meter Bezel to Meter Base

Reassemble meter bezel on meter base, put the outer clear cover on meter and rotate it toward clockwise direction (as the below yellow arrow shown)

